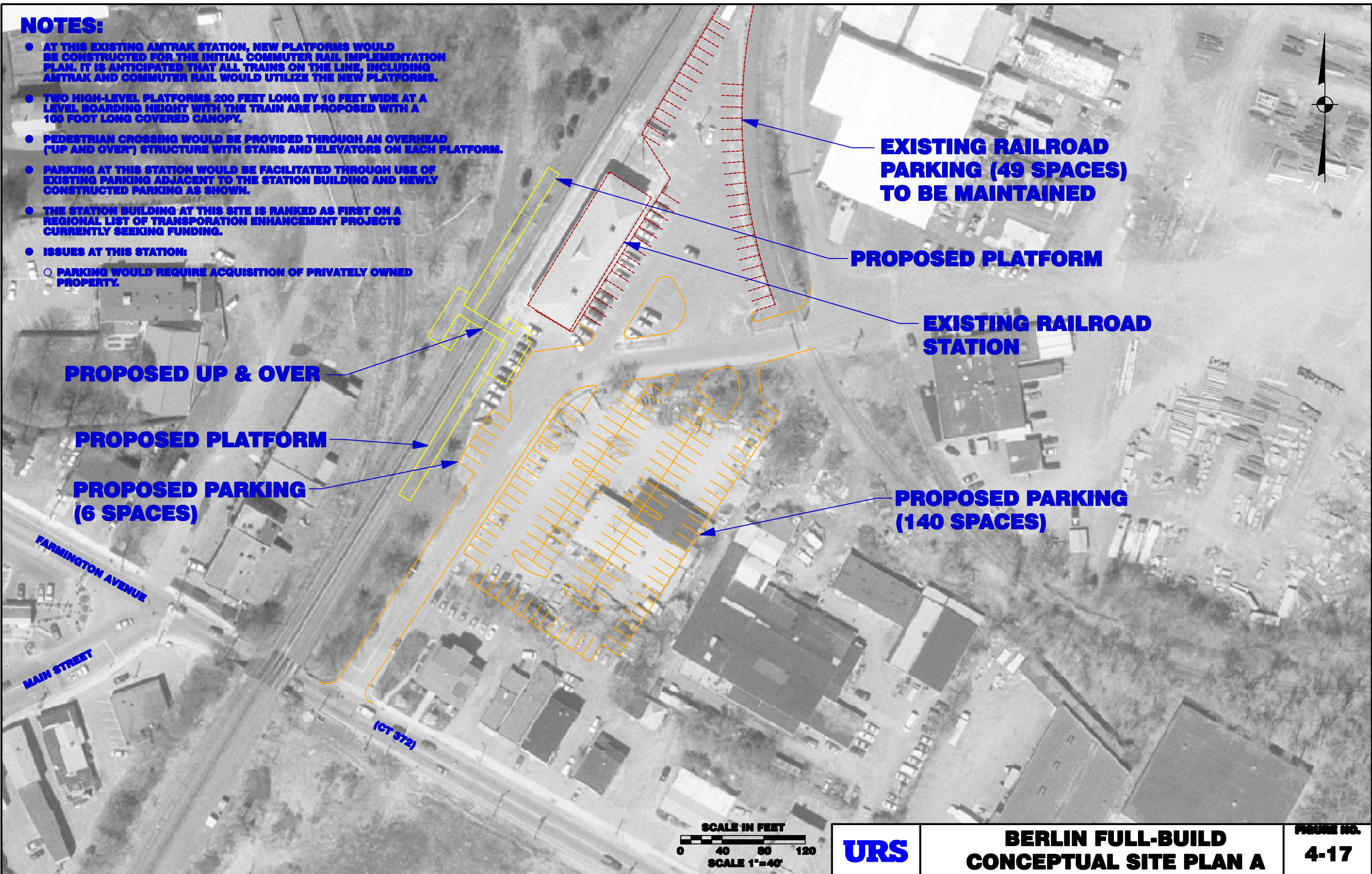
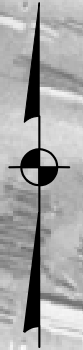


# NOTES:

- AT THIS EXISTING AMTRAK STATION, NEW PLATFORMS WOULD BE CONSTRUCTED FOR THE INITIAL COMMUTER RAIL IMPLEMENTATION PLAN. IT IS ANTICIPATED THAT ALL TRAINS ON THE LINE, INCLUDING AMTRAK AND COMMUTER RAIL WOULD UTILIZE THE NEW PLATFORMS.
- TWO HIGH-LEVEL PLATFORMS 200 FEET LONG BY 10 FEET WIDE AT A LEVEL BOARDING HEIGHT WITH THE TRAIN ARE PROPOSED WITH A 100 FOOT LONG COVERED CANOPY.
- PEDESTRIAN CROSSING WOULD BE PROVIDED THROUGH AN OVERHEAD ("UP AND OVER") STRUCTURE WITH STAIRS AND ELEVATORS ON EACH PLATFORM.
- PARKING AT THIS STATION WOULD BE FACILITATED THROUGH USE OF EXISTING PARKING ADJACENT TO THE STATION BUILDING AND NEWLY CONSTRUCTED PARKING AS SHOWN.
- THE STATION BUILDING AT THIS SITE IS RANKED AS FIRST ON A REGIONAL LIST OF TRANSPORTATION ENHANCEMENT PROJECTS CURRENTLY SEEKING FUNDING.
- ISSUES AT THIS STATION:
  - PARKING WOULD REQUIRE ACQUISITION OF PRIVATELY OWNED PROPERTY.



**EXISTING RAILROAD PARKING (49 SPACES) TO BE MAINTAINED**

**PROPOSED PLATFORM**

**EXISTING RAILROAD STATION**

**PROPOSED UP & OVER**

**PROPOSED PLATFORM**

**PROPOSED PARKING (6 SPACES)**

**PROPOSED PARKING (140 SPACES)**

**FARMINGTON AVENUE**

**MAIN STREET**

**(CT 372)**



**BERLIN FULL-BUILD CONCEPTUAL SITE PLAN A**

**FIGURE NO. 4-17**