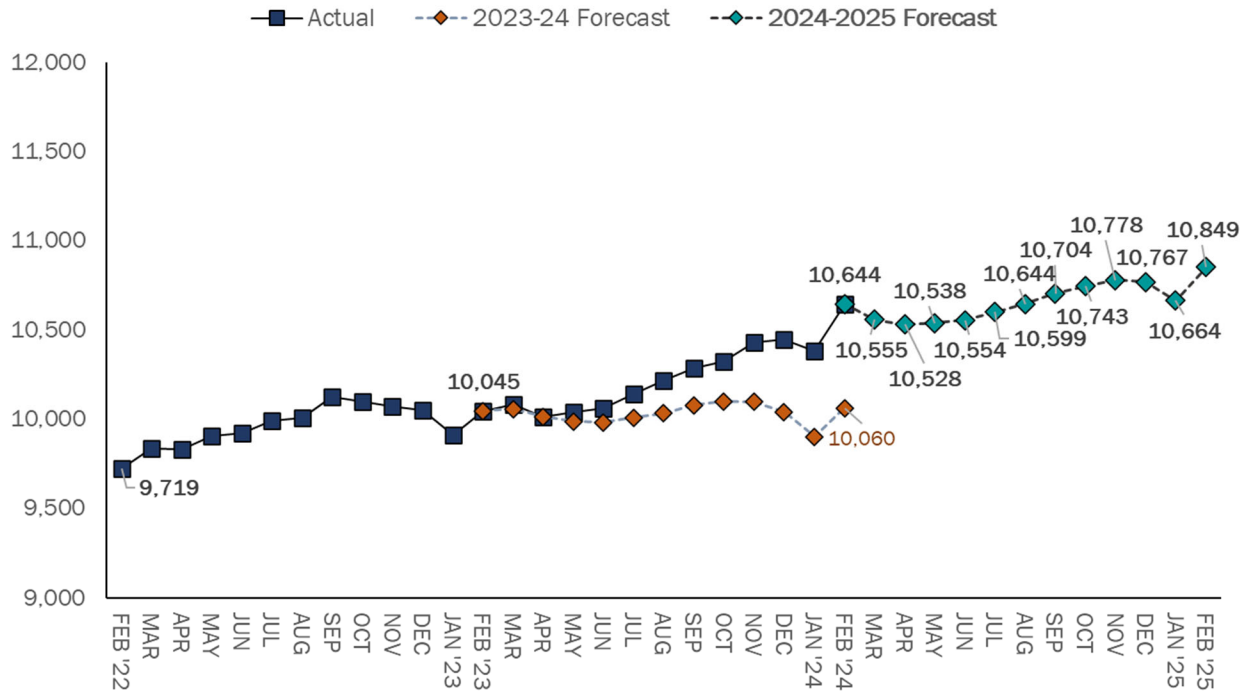


CORRECTIONAL POPULATION

2024-25 FORECAST

Connecticut Correctional Facility Population:
 Actual and Projected, February 2022 to February 2025



Note: The y-axis begins at 9,000 instead of 0 to better show the monthly variation in projected amounts.

Developing the 2024-2025 Forecast

Each February, the Office of Policy and Management Criminal Justice Policy & Planning Division (OPM CJPPD) forecasts Connecticut’s total correctional population over the subsequent 12 months. To develop the 2024-2025 forecast, OPM CJPPD again utilized an expanded forecasting approach. OPM CJPPD’s methodology has traditionally included: 1) an analysis of prison-population trend data 2) the use of an input-output model to track operational flows and rates of change in the size and composition of the prison population, and 3) assessments of the impact of proposed legislative and policy changes. In 2022, to better contextualize COVID-19 pandemic disruptions to long-term trends in the state’s criminal justice system, we augmented our traditional approach with additional time series methodologies. OPM CJPPD’s current forecast utilizes this mix of forecast approaches to generate a variety of estimates, then develops a composite forecast incorporating these results.

The OPM CJPPD forecast aids in setting near-term system expectations. In the upcoming year, OPM CJPPD anticipates the correctional population to **increase by nearly 2 percent**. Note, however, that recent trends indicate the DOC count may even rise above 11,000 by year’s end, surpassing our forecast peak. OPM CJPPD will continue to monitor correctional population changes monthly to identify emerging trends that may shift system expectations.

This brief was produced by the Criminal Justice Policy and Planning Division at:

The Connecticut Office of Policy and Management
 450 Capitol Avenue
 Hartford CT, 06106

The **2024-2025 Forecast** will be presented to the Criminal Justice Policy Advisory Commission in Spring 2024.

This report can be found on the OPM CJPPD website:
<https://portal.ct.gov/OPM/CJ-About/CJ-SAC/SAC-Sites/SAC-Homepage>.

