

# MONTHLY INDICATORS REPORT

## Summary of Connecticut Criminal Justice System Trends

### Key Metrics

(Percent change from prior month)

#### August Monthly Totals

**Criminal Arrests:**  
 8,267 ↓ (-1.7%)

**Arraignments:**  
 2,793 ↓ (-7.6%)

**DOC Admissions:**  
 1,562 ↔ (-0.6%)

**DOC Releases & Discharges:**  
 844 ↑ (+4.5%)

#### September 1 Counts

**DOC Facility:**  
 10,791 ↑ (+1.0%)

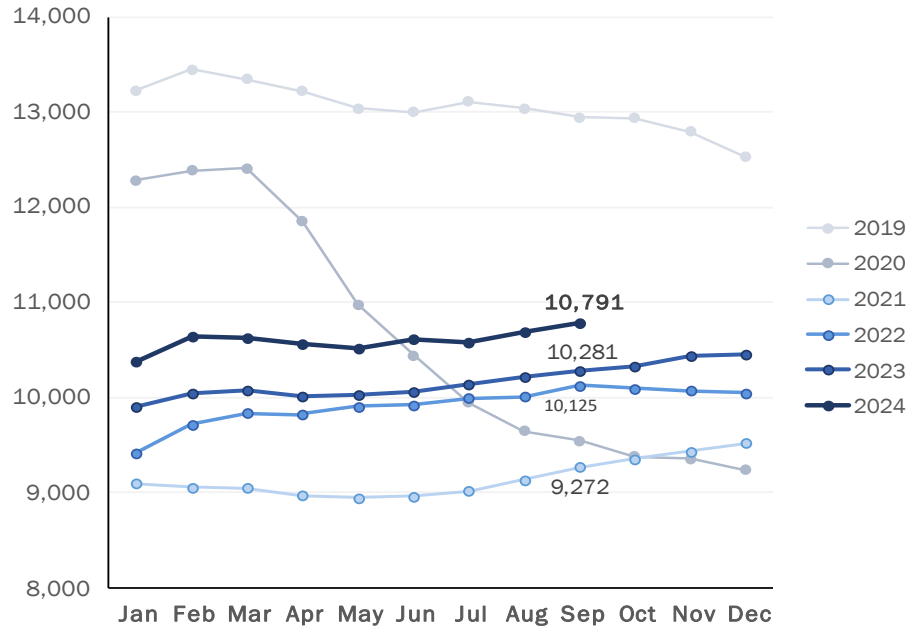
**Pretrial:**  
 3,698 ↑ (+1.4%)

**Sentenced:**  
 6,759 ↔ (+0.8%)

**DOC Community Supervision:**  
 2,989 ↔ (-0.3%)

### First-of-the-Month DOC Facility Population

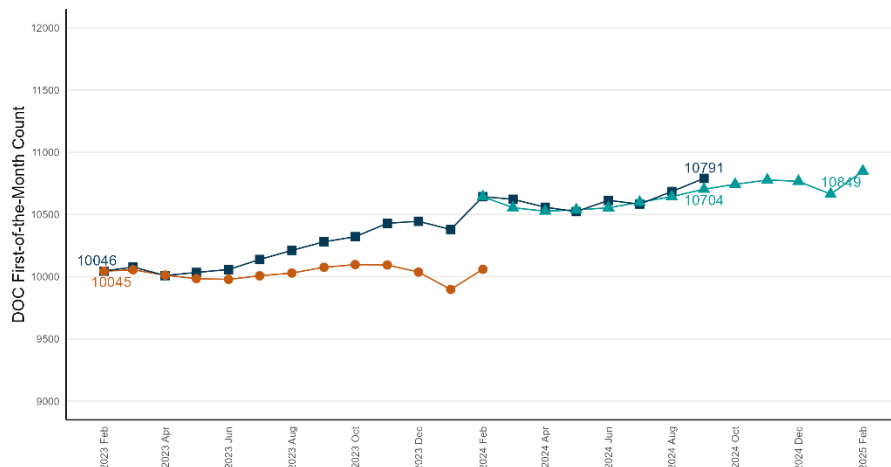
A comparison of up to five years shown by month



Note: To better illustrate changes, the Y-axis does not begin at zero.

### Correction Population Forecast

Forecast period: March 2024 – February 2025



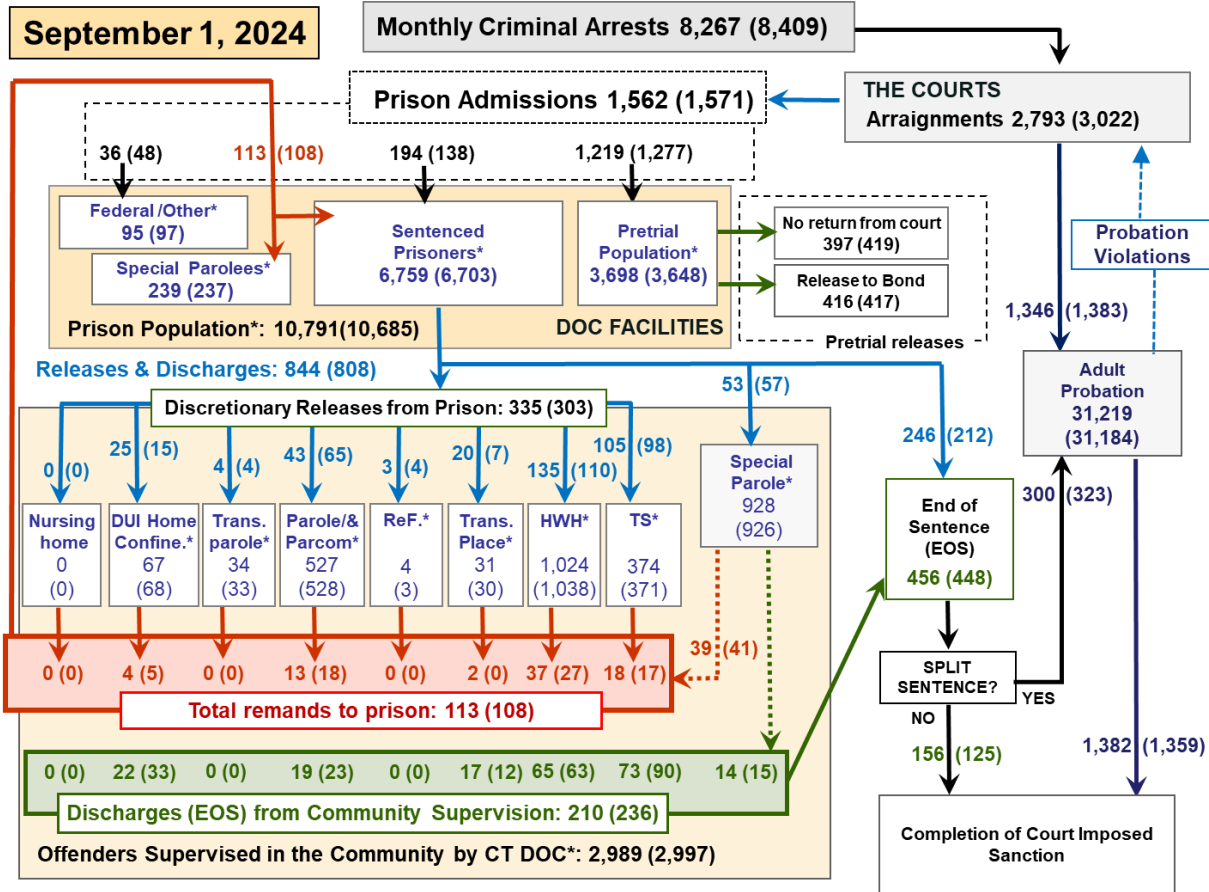
Note: To better illustrate changes, the Y-axis does not begin at zero.

### WEEK OF AUGUST 1, 2024

- **OPM Population Estimate:**  
10,704
  
- **DOC Facility Count:**  
**August 1** 10,791  
**First Week Avg.** 10,814
  
- **Difference from OPM Forecast:**
  - First of the Month +87 +0.8%
  - First Week Avg. +110 +1.0%

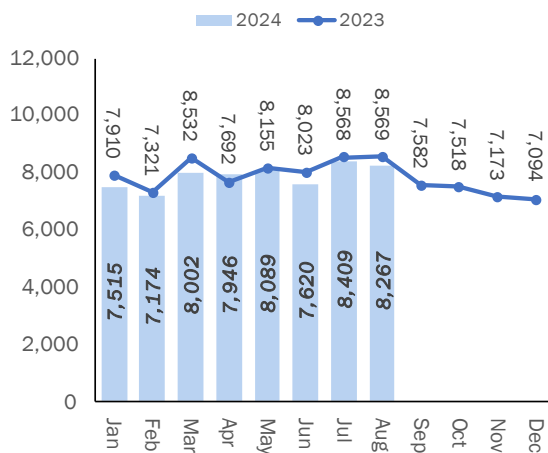


### Criminal Justice System Monthly Counts & Flow Chart



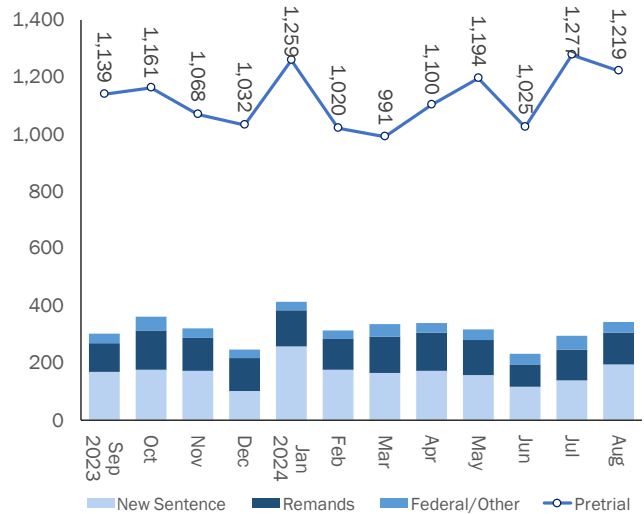
This flowchart contains monthly operations data for August 2024 and daily counts reported on September 1, 2024. Asterisks (\*) indicate the daily count on September 1. Figures from last month are enclosed by parentheses.

#### Statewide Arrests: 2023 & 2024



Note: Data in the chart above show new case starts in the state Criminal Motor Vehicle System (CRMVS).

#### Monthly DOC Admissions: 2023 & 2024

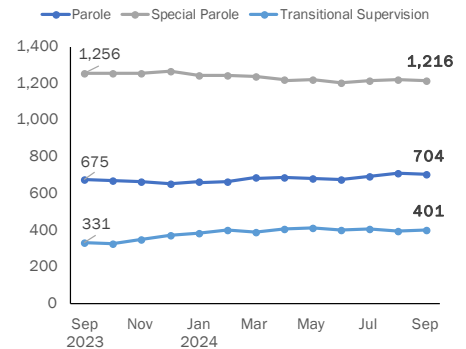


# Department of Correction

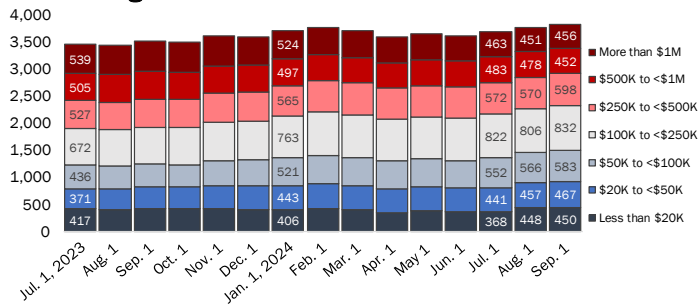
## First-of-the-Month Totals

	2024 Jul. 1	2024 Aug. 1	2024 Sep. 1	2023 Sep. 1	% Change	
					Monthly	Annual
<b>DOC Facilities</b>						
Federal/Other	93	97	95	88	-2.1%	8.0%
Sentenced	6,669	6,703	6,759	6,567	0.8%	2.9%
Special Parole	252	237	239	260	0.8%	-8.1%
Pretrial	3,570	3,648	3,698	3,366	1.4%	9.9%
<b>Total</b>	<b>10,584</b>	<b>10,685</b>	<b>10,791</b>	<b>10,281</b>	<b>1.0%</b>	<b>5.0%</b>
<b>DOC Community</b>						
Transfer Parole	33	33	34	30	3.0%	13.3%
Parole/ Parcom Total	516	528	527	519	-0.2%	1.5%
Parole	388	400	400	391	0.0%	2.3%
Parcom @ CT	128	128	127	128	-0.8%	-0.8%
Furlough	0	3	4	2	33.3%	100.0%
Trans Placement	37	30	31	34	3.3%	-8.8%
DUI/Home confine.	92	68	67	76	-1.5%	-11.8%
Halfway House Total	1,037	1,038	1,024	1,010	-1.3%	1.4%
Comm Release	545	538	528	530	-1.9%	-0.4%
Transitional Supervision	23	23	27	18	17.4%	50.0%
Parole	179	181	177	156	-2.2%	13.5%
Transfer Parole	4	3	4	14	33.3%	-71.4%
Special Parole	286	293	288	292	-1.7%	-1.4%
Transitional Supervision	384	371	374	313	0.8%	19.5%
Nursing home	0	0	0	0	-	-
Special Parole	928	926	928	964	0.2%	-3.7%
<b>Total</b>	<b>3,027</b>	<b>2,997</b>	<b>2,989</b>	<b>2,948</b>	<b>-0.3%</b>	<b>1.4%</b>

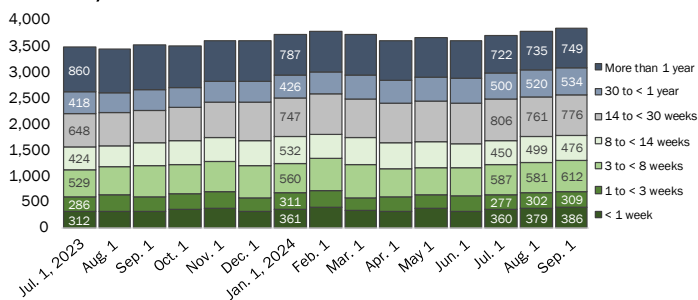
## DOC Community Supervision: First-of-the-Month Totals



## Bond Ranges for Pretrial Detainees



## Pretrial, Weeks Held since Admission



## Judicial Branch Court Support Services Division

### The Jail Reinterview Program

	Pretrial admissions	Offender interviews	Offenders released	Released last year
JUN	1,025	949	258	262
JUL	1,277	1,142	274	241
AUG	1,219	1,119	276	265

## Pretrial Bail and Probation Caseload

	Pretrial bail case starts	Client supv. starts	Split sentence starts	Pretrial bail cases*
JUN	2,189	1,100	269	13,655
JUL	1,383	1,383	323	
AUG '24	1,346	1,346	300	
AUG '23	2,748	1,386	273	12,992

\* Reflects open cases as of the first of the month.

**Ed. Note:** July – August 2024 pretrial bail cases and case starts unavailable at the time of publication and will be updated in the future.



## Department of Correction

### Monthly Totals

	2024	2024	2024	2023	% Change	
	JUN	JUL	AUG	AUG	Monthly	Annual
<b>Admissions</b>						
Federal/Other	38	48	36	34	-25.0%	5.9%
Remands	80	108	113	134	4.6%	-15.7%
DUI	3	5	4	4	-20.0%	0.0%
Transfer Parole	0	0	0	1	-	-100.0%
Parole	8	18	13	21	-27.8%	-38.1%
Trans Plac/Furlough	1	0	2	0	-	-
Halfway House	22	27	37	46	37.0%	-19.6%
Transitional Supervision	20	17	18	11	5.9%	63.6%
Special Parole	26	41	39	51	-4.9%	-23.5%
New Sentence	115	138	194	164	40.6%	18.3%
Violation of Parole	27	40	48	40	20.0%	20.0%
Pretrial	1,025	1,277	1,219	1,205	-4.5%	1.2%
<b>Total</b>	<b>1,258</b>	<b>1,571</b>	<b>1,562</b>	<b>1,537</b>	<b>-0.6%</b>	<b>1.6%</b>
<b>Releases and discharges</b>						
Transfer Parole	3	4	4	5	0.0%	-20.0%
Parole	53	65	43	55	-33.8%	-21.8%
Furlough	0	4	3	2	-25.0%	50.0%
Trans. Placement	16	7	20	13	185.7%	53.8%
Home Confinement DUI	24	15	25	15	66.7%	66.7%
Halfway House	133	110	135	159	22.7%	-15.1%
Transitional Supervision	103	98	105	86	7.1%	22.1%
Special Parole	57	57	53	57	-7.0%	-7.0%
Nursing home	0	0	0	0	-	-
End of Sentence	373	448	456	436	1.8%	4.6%
<b>Total</b>	<b>762</b>	<b>808</b>	<b>844</b>	<b>828</b>	<b>4.5%</b>	<b>1.9%</b>
<b>Pretrial Releases*</b>						
From Court	341	419	397	399	-5.3%	-0.5%
Release to Bond	334	417	416	427	-0.2%	-2.6%

\* Totals reflect events, not individual offenders

### Pretrial Admissions, New to DOC:

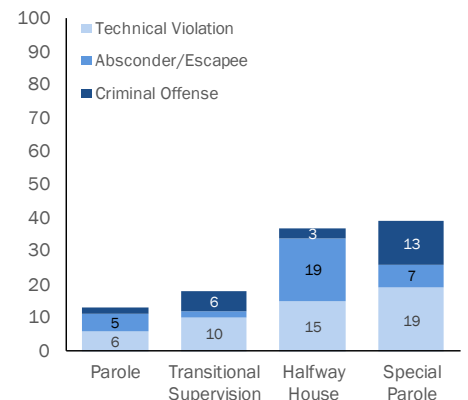
	JUN 2024	JUL 2024	AUG 2024	AUG 2023
Arraignments	2,295	3,022	2,793	2,815
Pretrial Admits	1,025	1,277	1,219	1,205
New to DOC	323	333	303	339
% New	32%	26%	25%	28%

## DOC Community Release

### Case Reviews and Release Metrics

	Cases reviewed	Approved	Denied	Continued	Approval rate
JUN	480	224	44	108	47%
JUL	474	238	36	112	50%
AUG '24	520	265	25	125	51%
AUG '23	602	292	41	163	49%

### Remands from Community Release



## Board of Pardons and Paroles

### Parole Hearings

	Parole hearings	Paroles granted	Grant rate	Granted: prior year	Granted: two years prior
JUN	91	43	47%	51	33
JUL	70	34	49%	43	33
AUG	78	34	44%	40	50

### Pardon Decisions

	Absolute Pardon			Cert. of Employability			Commutations		
	Granted	Denied	%	Granted	Denied	%	Granted	Denied	%
JUN	115	14	89%	2	0	100%	1	2	33%
JUL	90	18	83%	4	0	100%	0	0	0%
AUG '24	83	15	85%	7	0	100%	0	0	0%

### Other BOPP Actions

	Reparole from revocation	Early Termination		Special parole discharges	Transfer parole approvals
		Discretionary parole	Special parole		
JUN	49	2	5	12	4
JUL	39	1	2	16	2
AUG '24	41	1	1	15	10
AUG '23	43	0	11	23	3

Monthly data sources: CRMVS via CJIS (arrests), JB CSSD (court and probation figures), BOPP and the DOC.

This report produced by the [Criminal Justice Policy & Planning Division Research Unit](#) at:

The Connecticut Office of Policy and Management  
450 Capitol Avenue, Hartford CT, 06106

