

# MONTHLY INDICATORS REPORT

## Summary of Connecticut Criminal Justice System Trends

### Key Metrics

(Percent change from prior month)

#### April Monthly Totals

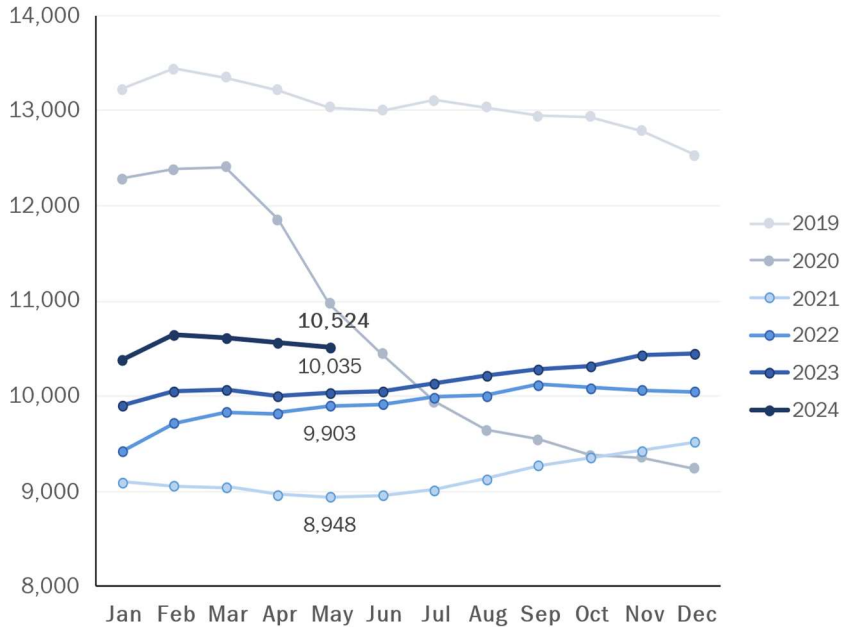
- Criminal Arrests:**  
7,946 ↔ (-0.7%)
- Arraignments:**  
2,692 ↑ (+13.7%)
- DOC Admissions:**  
1,438 ↑ (+8.4%)
- DOC Releases & Discharges:**  
896 ↑ (+8.7%)

#### May 1 Counts

- DOC Facility:**  
10,542 ↔ (-0.3%)
- Pretrial:  
3,500 ↔ (0.0%)
- Sentenced:  
6,679 ↔ (-0.6%)
- DOC Community Supervision:**  
3,002 ↑ (+1.5%)

### First-of-the-Month DOC Facility Population

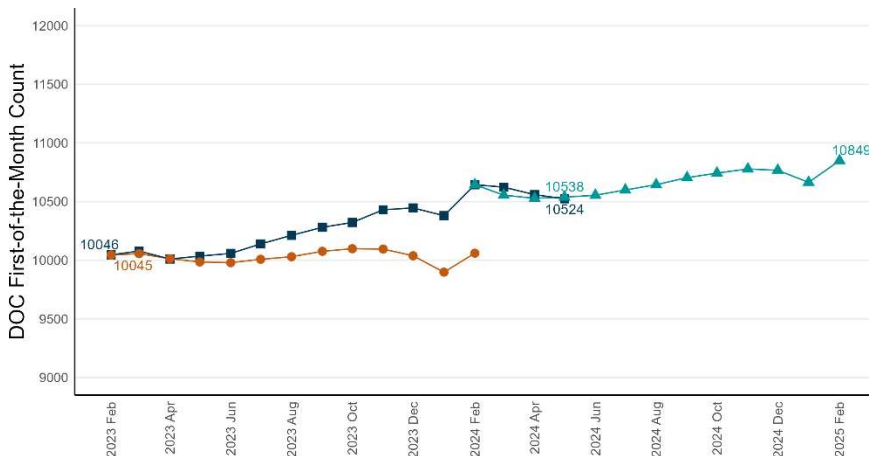
A comparison of up to five years shown by month



Note: To better illustrate changes, the Y-axis does not begin at zero.

### Correction Population Forecast

Forecast period: March 2024 – February 2025



Note: To better illustrate changes, the Y-axis does not begin at zero.

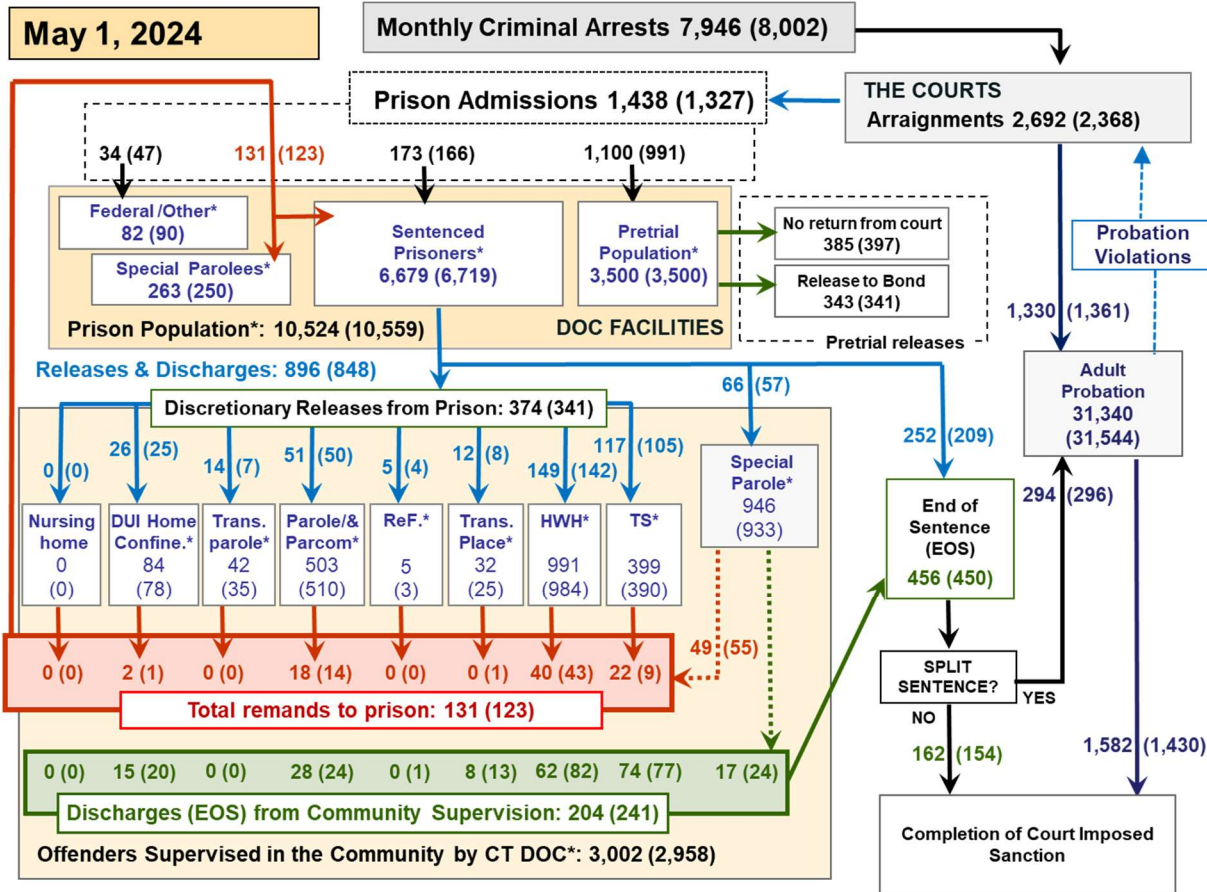
### WEEK OF MAY 1, 2024

- **OPM Population Estimate:**  
10,538
- **DOC Facility Count:**  

<b>May 1</b>	10,524
<b>First Week Avg.</b>	10,534
- **Difference from OPM Forecast:**
  - First of the Month  
-14      -0.1%
  - First Week Avg.  
-4        0.0%

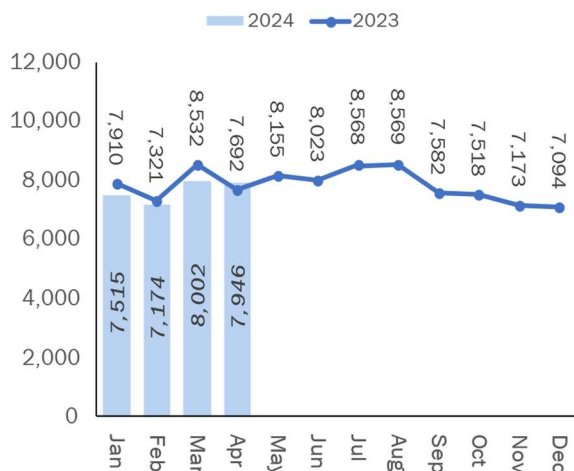


### Criminal Justice System Monthly Counts & Flow Chart



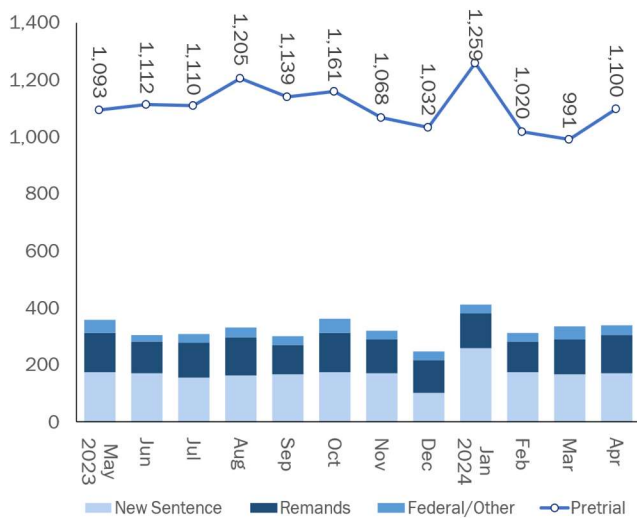
This flowchart contains monthly operations data for April 2024 and daily counts reported on May 1, 2024. Asterisks (\*) indicate the daily count on May 1. Figures from last month are enclosed by parentheses.

#### Statewide Arrests: 2023 & 2024



Note: Data in the chart above show new case starts in the state Criminal Motor Vehicle System (CRMVS).

#### Monthly DOC Admissions: 2023 & 2024

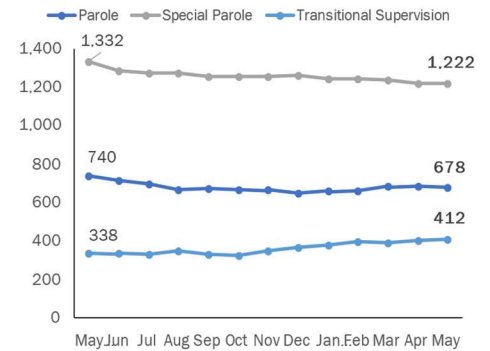


# Department of Correction

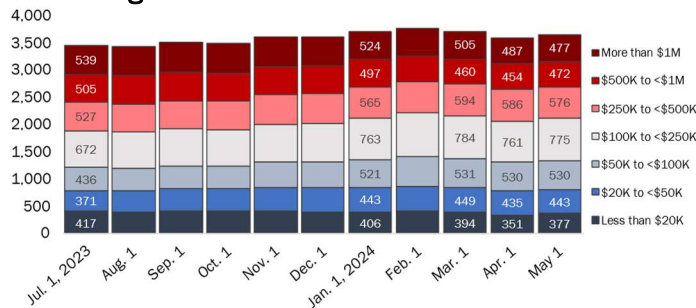
## First-of-the-Month Totals

	2024	2024	2024	2023	% Change	
	Mar. 1	Apr. 1	May 1	May 1	Monthly	Annual
<b>DOC Facilities</b>						
Federal/Other	79	90	82	90	-8.9%	-8.9%
Sentenced	6,717	6,719	6,679	6,324	-0.6%	5.6%
Special Parole	236	250	263	247	5.2%	6.5%
Pretrial	3,591	3,500	3,500	3,374	0.0%	3.7%
<b>Total</b>	<b>10,623</b>	<b>10,559</b>	<b>10,524</b>	<b>10,035</b>	<b>-0.3%</b>	<b>4.9%</b>
<b>DOC Community</b>						
Transfer Parole	33	35	42	37	20.0%	13.5%
Parole/ Parcom Total	512	510	503	581	-1.4%	-13.4%
Parole	388	385	374	433	-2.9%	-13.6%
Parcom @ CT	124	125	129	148	3.2%	-12.8%
Furlough	2	3	5	10	66.7%	-50.0%
Trans Placement	30	25	32	30	28.0%	6.7%
DUI/Home confine.	76	78	84	96	7.7%	-12.5%
Halfway House Total	995	984	991	1,026	0.7%	-3.4%
Comm Release	513	504	516	523	2.4%	-1.3%
Transitional Supervision	12	13	13	23	0.0%	-43.5%
Parole	172	175	175	159	0.0%	10.1%
Transfer Parole	4	6	11	15	83.3%	-26.7%
Special Parole	294	286	276	306	-3.5%	-9.8%
Transitional Supervision	377	390	399	315	2.3%	26.7%
Nursing home	0	0	0	0	-	-
Special Parole	942	933	946	1,026	1.4%	-7.8%
<b>Total</b>	<b>2,967</b>	<b>2,958</b>	<b>3,002</b>	<b>3,121</b>	<b>1.5%</b>	<b>-3.8%</b>

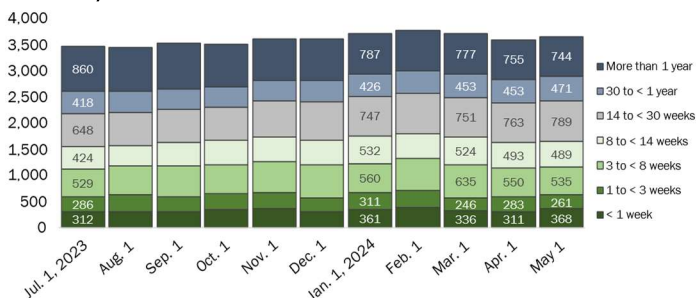
## DOC Community Supervision: First-of-the-Month Totals



## Bond Ranges for Pretrial Detainees



## Pretrial, Weeks Held since Admission



## Judicial Branch Court Support Services Division

### The Jail Reinterview Program

	Pretrial admissions	Offender interviews	Offenders released	Released last year
FEB	1,020	968	251	225
MAR	991	887	228	267
APR	1,100	1,044	241	187

## Pretrial Bail and Probation Caseload

	Pretrial bail case starts	Client supv. starts	Split sentence starts	Pretrial bail cases*
FEB	2,265	1,163	256	13,383
MAR	2,447	1,361	296	13,384
APR '24		1,330	294	13,449
APR '23	2,278	1,358	262	13,366

\* Reflects open cases as of the first of the month.  
**Ed. Note:** April 2024 pretrial bail case starts unavailable at the time of publication and will be updated in the future.



## Department of Correction

### Monthly Totals

	2024	2024	2024	2023	% Change	
	FEB	MAR	APR	APR	Monthly	Annual
<b>Admissions</b>						
Federal/Other	32	47	34	49	-27.7%	-30.6%
Remands	107	123	131	96	6.5%	36.5%
DUI	2	1	2	3	100.0%	-33.3%
Transfer Parole	1	0	0	1	-	-100.0%
Parole	21	14	18	19	28.6%	-5.3%
Trans Plac/Furlough	1	1	0	1	-100.0%	-100.0%
Halfway House	30	43	40	19	-7.0%	110.5%
Transitional Supervision	11	9	22	8	144.4%	175.0%
Special Parole	41	55	49	45	-10.9%	8.9%
New Sentence	175	166	173	176	4.2%	-1.7%
Violation of Parole	42	47	49	32	4.3%	53.1%
Pretrial	1,020	991	1,100	931	11.0%	18.2%
<b>Total</b>	<b>1,334</b>	<b>1,327</b>	<b>1,438</b>	<b>1,252</b>	<b>8.4%</b>	<b>14.9%</b>
<b>Releases and discharges</b>						
Transfer Parole	2	7	14	6	100.0%	133.3%
Parole	65	50	51	34	2.0%	50.0%
Furlough	2	4	5	11	25.0%	-54.5%
Trans. Placement	16	8	12	7	50.0%	71.4%
Home Confinement DUI	19	25	26	27	4.0%	-3.7%
Halfway House	106	142	149	108	4.9%	38.0%
Transitional Supervision	95	105	117	75	11.4%	56.0%
Special Parole	50	57	66	60	15.8%	10.0%
Nursing home	0	0	0	0	-	-
End of Sentence	427	450	456	372	1.3%	22.6%
<b>Total</b>	<b>782</b>	<b>848</b>	<b>896</b>	<b>700</b>	<b>5.7%</b>	<b>28.0%</b>
<b>Pretrial Releases*</b>						
From Court	395	397	385	350	-3.0%	10.0%
Release to Bond	352	341	343	298	0.6%	15.1%

\* Totals reflect events, not individual offenders

### Pretrial Admissions, New to DOC:

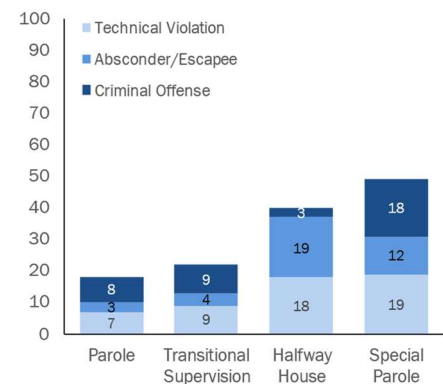
	FEB 2024	MAR 2024	APR 2024	APR 2023
Arraignments	2,417	2,368	2,692	2,261
Pretrial Admits	1,020	991	1,100	931
New to DOC	290	263	299	252
% New	28%	27%	27%	27%

## DOC Community Release

### Case Reviews and Release Metrics

	Cases reviewed	Approved	Denied	Continued	Approval rate
FEB	500	258	36	105	52%
MAR	478	244	28	107	51%
APR '24	650	334	48	147	51%
APR '23	484	244	45	107	50%

### Remands from Community Release



## Board of Pardons and Paroles

### Parole Hearings

	Parole hearings	Paroles granted	Grant rate	Granted: prior year	Granted: two years prior
FEB	87	54	62%	32	43
MAR	86	43	50%	35	49
APR	104	49	47%	37	59

### Pardon Decisions

	Absolute Pardon			Cert. of Employability			Commutations		
	Granted	Denied	%	Granted	Denied	%	Granted	Denied	%
FEB	81	11	88%	1	0	100%	0	0	0%
MAR	79	6	93%	5	0	100%	3	3	50%
APR '24	67	10	87%	2	0	100%	0	0	0%

### Other BOPP Actions

	Reparole from revocation	Early Termination		Special parole discharges	Transfer parole approvals
		Discretionary parole	Special parole		
FEB	33	6	6	16	11
MAR	28	13	13	18	11
APR '24	30	1	3	20	7
APR '23	46	5	13	20	15

Monthly data sources: CRMVS via CJIS (arrests), JB CSSD (court and probation figures), BOPP and the DOC.

This report produced by the [Criminal Justice Policy & Planning Division Research Unit](#) at:

The Connecticut Office of Policy and Management  
450 Capitol Avenue, Hartford CT, 06106

