

MONTHLY INDICATORS REPORT

Summary of Connecticut Criminal Justice System Trends

Key Metrics

(Percent change from prior month)

July Monthly Totals

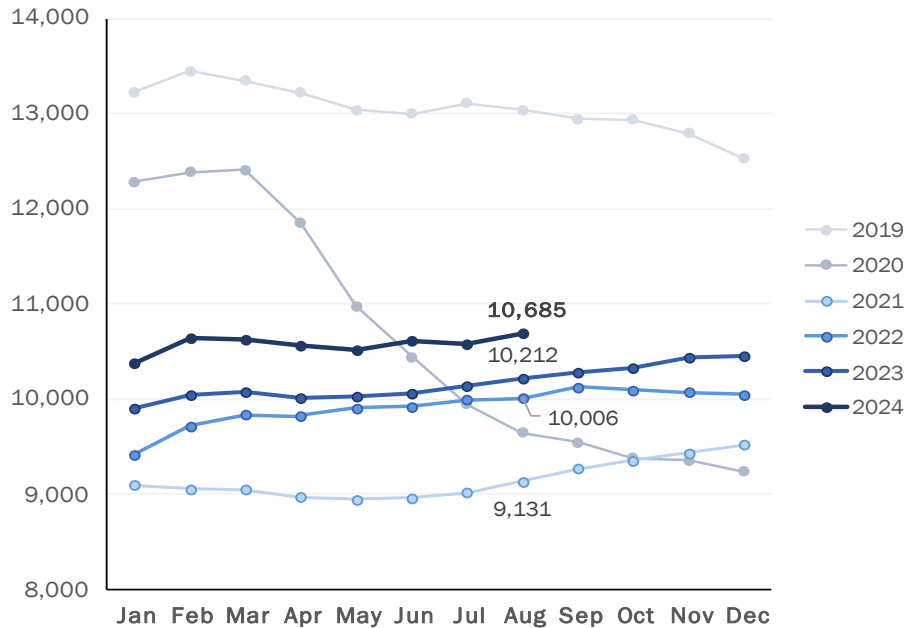
- Criminal Arrests:**
8,409 ↑ (+6.2%)
- Arraignments:**
3,022 ↑ (+31.7%)
- DOC Admissions:**
1,571 ↑ (+24.9%)
- DOC Releases & Discharges:**
808 ↑ (+6.0%)

August 1 Counts

- DOC Facility:**
10,685 ↔ (+1.0%)
- Pretrial:
3,648 ↑ (+2.2%)
- Sentenced:
6,703 ↔ (+0.5%)
- DOC Community Supervision:**
2,997 ↔ (-1.0%)

First-of-the-Month DOC Facility Population

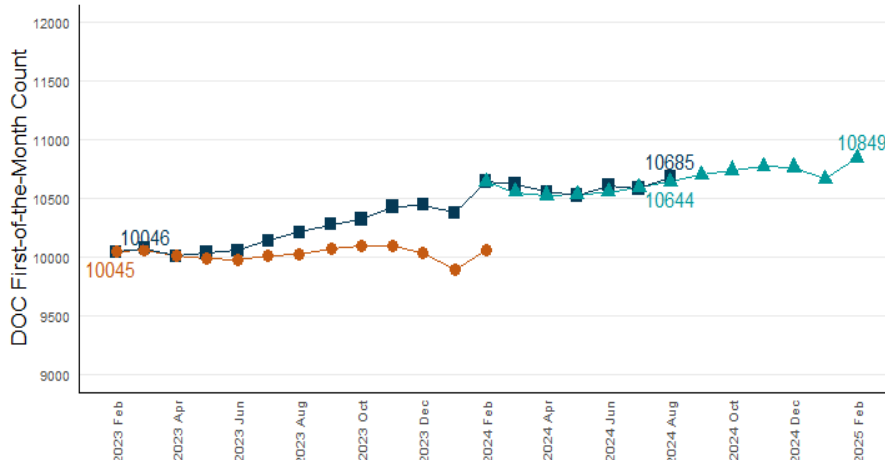
A comparison of up to five years shown by month



Note: To better illustrate changes, the Y-axis does not begin at zero.

Correction Population Forecast

Forecast period: March 2024 – February 2025



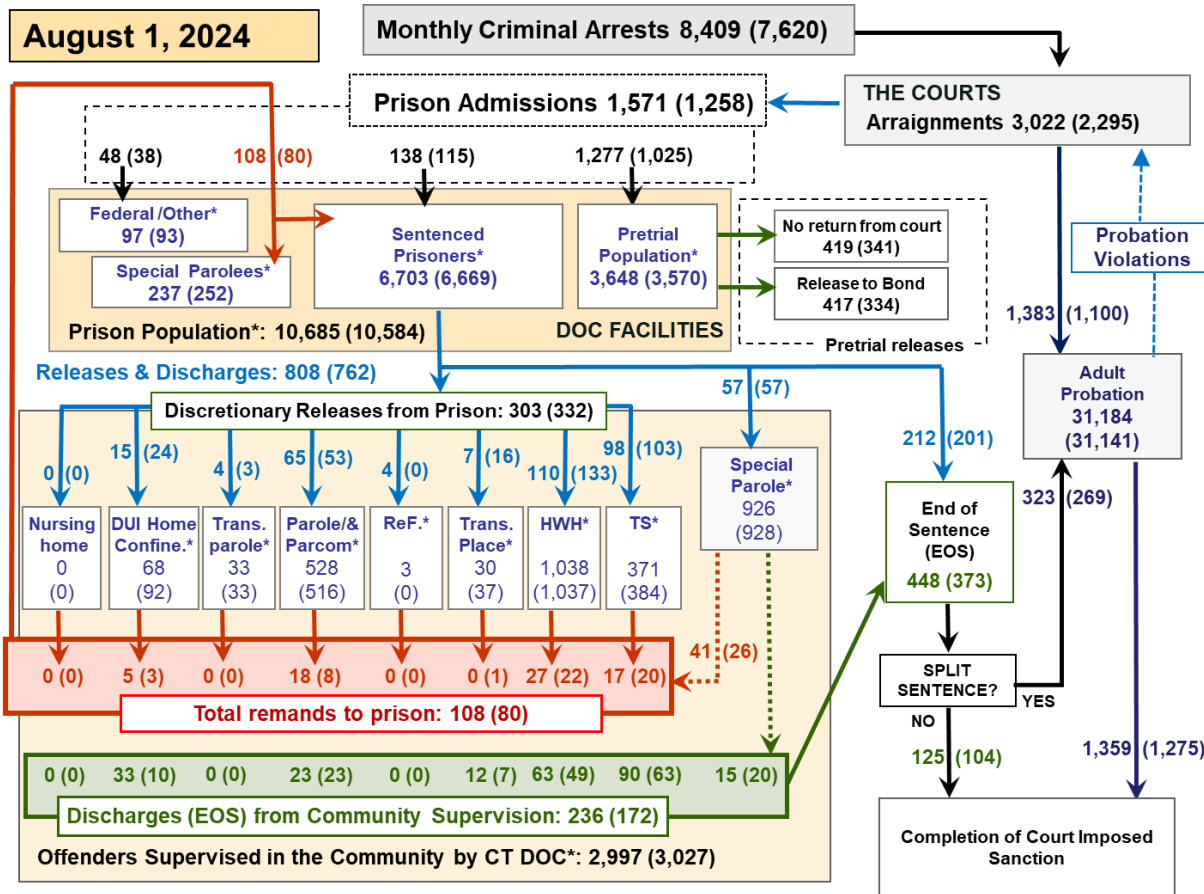
Note: To better illustrate changes, the Y-axis does not begin at zero.

WEEK OF AUGUST 1, 2024

- **OPM Population Estimate:**
10,644
- **DOC Facility Count:**
August 1: 10,685
First Week Avg.: 10,684
- **Difference from OPM Forecast:**
 - First of the Month: +41 (+0.4%)
 - First Week Avg.: +40 (+0.4%)

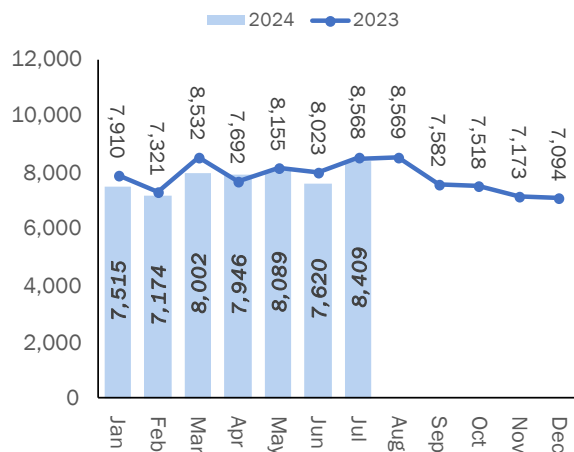


Criminal Justice System Monthly Counts & Flow Chart



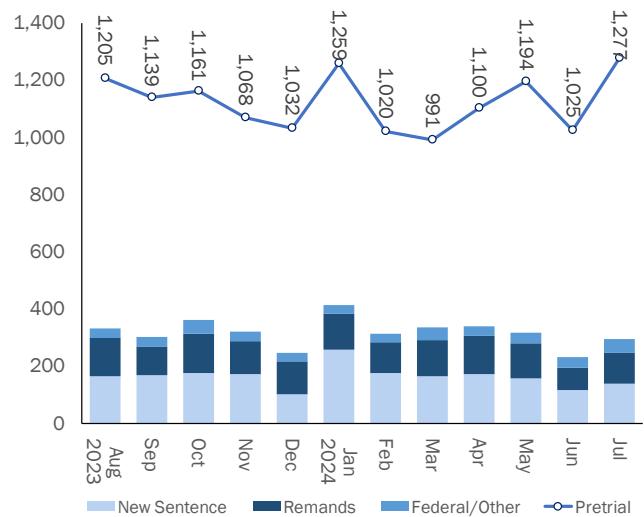
This flowchart contains monthly operations data for July 2024 and daily counts reported on August 1, 2024. Asterisks (*) indicate the daily count on August 1. Figures from last month are enclosed by parentheses.

Statewide Arrests: 2023 & 2024



Note: Data in the chart above show new case starts in the state Criminal Motor Vehicle System (CRMVS).

Monthly DOC Admissions: 2023 & 2024

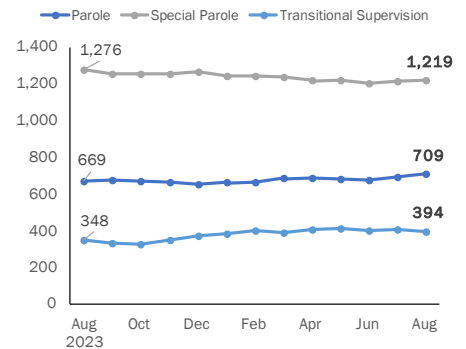


Department of Correction

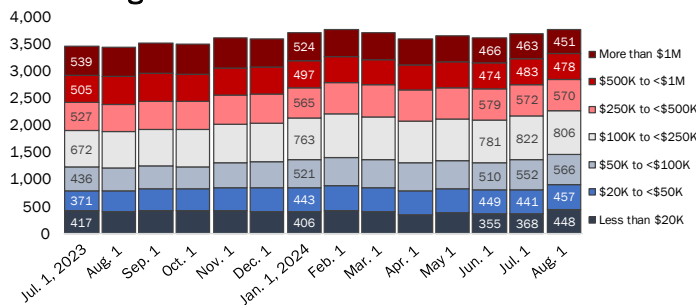
First-of-the-Month Totals

	2024 Jun. 1	2024 Jul. 1	2024 Aug. 1	2023 Aug. 1	% Change	
					Monthly	Annual
DOC Facilities						
Federal/Other	89	93	97	85	4.3%	14.1%
Sentenced	6,729	6,669	6,703	6,528	0.5%	2.7%
Special Parole	266	252	237	247	-6.0%	-4.0%
Pretrial	3,530	3,570	3,648	3,352	2.2%	8.8%
Total	10,614	10,584	10,685	10,212	1.0%	4.6%
DOC Community						
Transfer Parole	35	33	33	32	0.0%	3.1%
Parole/ Parcom Total	497	516	528	517	2.3%	2.1%
Parole	372	388	400	388	3.1%	3.1%
Parcom @ CT	125	128	128	129	0.0%	-0.8%
Furlough	3	0	3	2	-	50.0%
Trans Placement	28	37	30	37	-18.9%	-18.9%
DUI/Home confine.	82	92	68	85	-26.1%	-20.0%
Halfway House Total	1,013	1,037	1,038	988	0.1%	5.1%
Comm Release	524	545	538	502	-1.3%	7.2%
Transitional Supervision	22	23	23	21	0.0%	9.5%
Parole	177	179	181	152	1.1%	19.1%
Transfer Parole	7	4	3	20	-25.0%	-85.0%
Special Parole	283	286	293	293	2.4%	0.0%
Transitional Supervision	375	384	371	327	-3.4%	13.5%
Nursing home	0	0	0	0	-	-
Special Parole	919	928	926	983	-0.2%	-5.8%
Total	2,952	3,027	2,997	2,971	-1.0%	0.9%

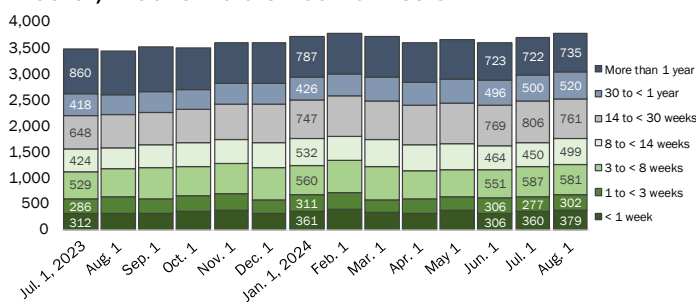
DOC Community Supervision: First-of-the-Month Totals



Bond Ranges for Pretrial Detainees



Pretrial, Weeks Held since Admission



Judicial Branch Court Support Services Division

The Jail Reinterview Program

	Pretrial admissions	Offender interviews	Offenders released	Released last year
MAY	1,194	1,047	297	244
JUN	1,025	949	258	262
JUL	1,277	1,142	274	241

Pretrial Bail and Probation Caseload

	Pretrial bail case starts	Client supv. starts	Split sentence starts	Pretrial bail cases*
MAY	2,730	1,446	272	13,463
JUN	2,189	1,100	269	13,655
JUL '24	2,483	1,383	323	13,006

* Reflects open cases as of the first of the month.
Ed. Note: July 2024 pretrial bail cases and case starts unavailable at the time of publication and will be updated in the future.



Department of Correction

Monthly Totals

	2024	2024	2024	2023	% Change	
	MAY	JUN	JUL	JUL	Monthly	Annual
Admissions						
Federal/Other	38	38	48	33	26.3%	45.5%
Remands	120	80	108	122	35.0%	-11.5%
DUI	1	3	5	1	66.7%	400.0%
Transfer Parole	0	0	0	0	-	-
Parole	26	8	18	18	125.0%	0.0%
Trans Plac/Furlough	1	1	0	0	-100.0%	-
Halfway House	31	22	27	47	22.7%	-42.6%
Transitional Supervision	12	20	17	11	-15.0%	54.5%
Special Parole	49	26	41	45	57.7%	-8.9%
New Sentence	159	115	138	155	20.0%	-11.0%
Violation of Parole	41	27	40	45	48.1%	-11.1%
Pretrial	1,194	1,025	1,277	1,110	24.6%	15.0%
Total	1,511	1,258	1,571	1,420	24.9%	10.6%
Releases and discharges						
Transfer Parole	4	3	4	7	33.3%	-42.9%
Parole	48	53	65	36	22.6%	80.6%
Furlough	4	0	4	3	-	33.3%
Trans. Placement	9	16	7	8	-56.3%	-12.5%
Home Confinement DUI	29	24	15	27	-37.5%	-44.4%
Halfway House	113	133	110	109	-17.3%	0.9%
Transitional Supervision	100	103	98	98	-4.9%	0.0%
Special Parole	57	57	57	70	0.0%	-18.6%
Nursing home	0	0	0	0	-	-
End of Sentence	445	373	448	451	20.1%	-0.7%
Total	809	762	808	809	6.0%	-0.1%
Pretrial Releases*						
From Court	427	341	419	371	22.9%	12.9%
Release to Bond	393	334	417	346	24.9%	20.5%

* Totals reflect events, not individual offenders

Pretrial Admissions, New to DOC:

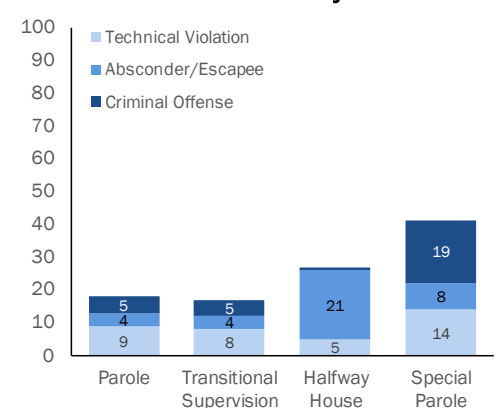
	MAY 2024	JUN 2024	JUL 2024	JUL 2023
Arraignments	2,865	2,295	3,022	2,574
Pretrial Admits	1,194	1,025	1,277	1,110
New to DOC	368	323	333	300
% New	31%	32%	26%	27%

DOC Community Release

Case Reviews and Release Metrics

	Cases reviewed	Approved	Denied	Continued	Approval rate
MAY	480	244	45	105	51%
JUN	480	224	44	108	47%
JUL '24	474	238	36	112	50%
JUL '23	469	249	37	100	53%

Remands from Community Release



Board of Pardons and Paroles

Parole Hearings

	Parole hearings	Paroles granted	Grant rate	Granted: prior year	Granted: two years prior
MAY	88	37	42%	38	33
JUN	91	43	47%	51	32
JUL	70	34	49%	43	33

Pardon Decisions

	Absolute Pardon			Cert. of Employability			Commutations		
	Granted	Denied	%	Granted	Denied	%	Granted	Denied	%
MAY	103	35	75%	0	0	0%	0	0	0%
JUN	115	14	89%	2	0	100%	1	2	33%
JUL '24	90	18	83%	4	0	100%	0	0	0%

Other BOPP Actions

	Reparole from revocation	Early Termination		Special parole discharges	Transfer parole approvals
		Discretionary parole	Special parole		
MAY	31	5	11	14	1
JUN	49	2	5	12	4
JUL '24	39	1	2	16	2
JUL '23	50	9	9	17	3

Monthly data sources: CRMVS via CJIS (arrests), JB CSSD (court and probation figures), BOPP and the DOC.

This report produced by the [Criminal Justice Policy & Planning Division Research Unit](#) at:

The Connecticut Office of Policy and Management
450 Capitol Avenue, Hartford CT, 06106

