

OPM - Criminal Justice Policy & Planning Division Monthly Indicators Report



Highlights

- Connecticut's correctional population held 9,833 individuals on March 1st, a 114-person (1.2%) increase from February 1st. Compared to the prior year, the March 1st census is 8.7% higher as the facility population continues to rebound from pandemic lows (see Table 2).
- After rising previously, several metrics held steady over the past month. DOC admissions, releases and discharges all differed by less than 1% from the previous month (see Table 2a), while the first of the month pretrial and sentenced populations varied by 2% or less between February and March (see Table 2).
- Arraignments increased 11.2% between January and February (from 1,834 to 2,039 arraignments). This rise follows a 9.1% drop between January 2022 and December 2021.
- On March 1, 2022, there were 1,608 individuals actively on Special Parole, only slightly fewer than that of the previous month (see Chart 8). Compared to one year ago, however, the special parole population has contracted significantly from 2,141 to 1,608 individuals, a 24.9% reduction.

Correction Population Forecast

On February 15, 2022, OPM CJPPD released its annual projection of the correctional population through February 2023. At the end of the 2022 forecast cycle, OPM's prior projection underestimated the actual February 2022 population by 8.3%. OPM's newest projection forecasts the correctional population to fluctuate throughout the coming year but ultimately reach 9,820 people by February 2023. Overall, that would result in less than a percentage point change from current counts.

March provides the initial opportunity to compare OPM's 2023 forecast against the actual Connecticut correction population. DOC facilities averaged 9,818 people over the first seven days of March, less than a one percent difference from OPM's estimate (+18 people). Typically, OPM's forecast accuracy is high during initial months of the projection cycle. With ongoing uncertainty during the COVID-19 pandemic, however, we anticipate that trends in upcoming months could differ from historic patterns.

TABLE 1 – Correction Population Forecast

	Avg. Daily OPM 2022 Count	Forecast	Inmate difference
JAN '22	9,456	-	-
FEB	9,734	9,734	-
MAR	9,818	9,800	18
APR		9,759	
MAY		9,709	
JUN		9,708	
JUL		9,737	
AUG		9,777	
SEP		9,822	
OCT		9,864	
NOV		9,865	
DEC		9,796	
JAN '23		9,656	
FEB		9,820	

Avg. Daily Count (ADC) for 1st week of month

OPM will continue to monitor the correctional population for any divergence from our forecast. The historic winter-to-spring pattern typically involves the correctional population rising through February then declining throughout spring. OPM will be watching whether this pattern re-asserts itself in the months ahead or if a different trend emerges from this current phase of the pandemic.

Chart 1 – Actual Correctional Population Against the OPM Forecasts
January 1, 2021 through February 1, 2023

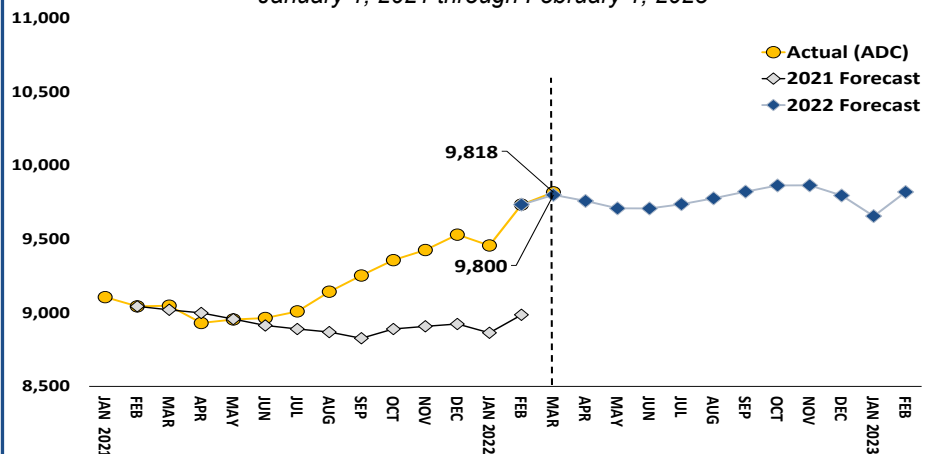


Chart 2 - Criminal Justice, Monthly Counts and Flows

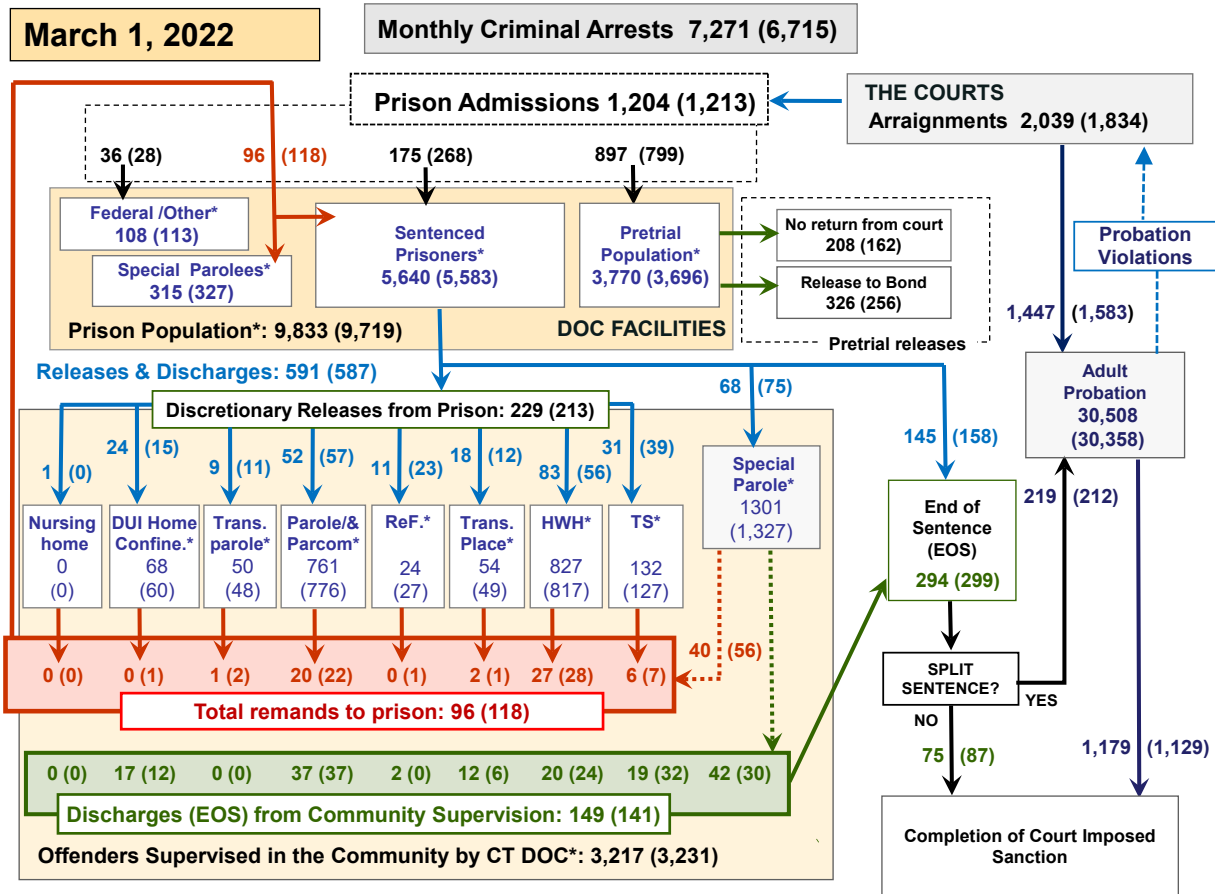
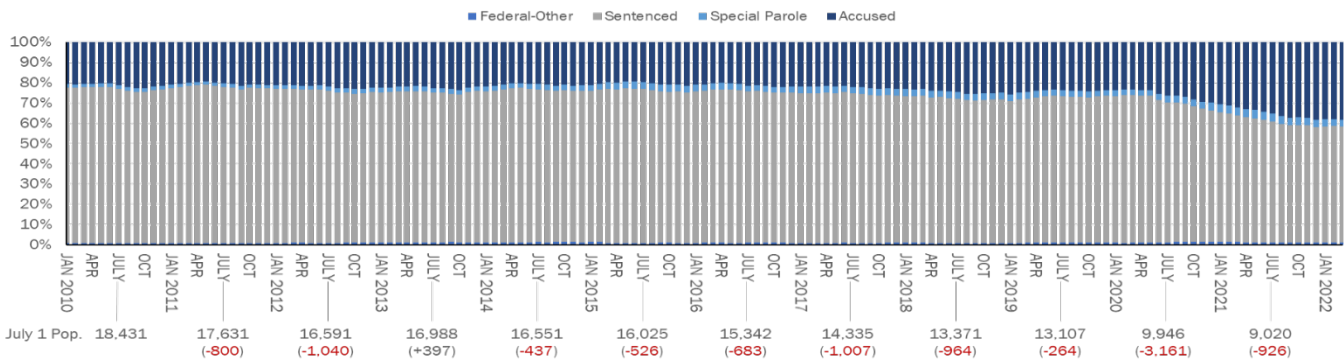


Chart 2 contains monthly operations data for February 2022 and daily counts reported on March 1, 2022. Asterisks (*) indicate the daily count on March 1st. Figures for last month are enclosed by parentheses. Sources: Arrests – CRMVS, via CJIS, Court and probation data - CSSD, all other data - CT DOC.

Spotlight: Key Correctional Population Types Over Time



The chart above presents the correctional facility population over time across 4 key categories tracked by the DOC: 1) the small number of individuals held for federal charges or interstate compacts, 2) those serving incarceration sentences, 3) those remanded on special parole, and 4) those held pretrial pending disposition of their case(s) ("Accused"). The chart shows each category's percentage share of the first-of-the-month total population from January 2010 through March 2022. For reference, July 1 population totals and annual changes are shown below the chart as well.

The chart illustrates the consistency of these different categories' proportions most years despite contractions in the correctional population. From 2010 to 2020, the pretrial

population (dark blue) hovered around 20-25% of the total, while sentenced individuals comprised the majority of the correctional population. The Federal/Other category (bottom) comprised only 1%, with Special Parole (middle) at 3%.

Following the pandemic's onset in 2020, the chart demonstrates how the pretrial population increased its share, with pretrial individuals comprising 38% of the DOC population by March 1, 2022. Meanwhile, the sentenced group fell below 60 percent. This shift highlights yet another way in which the pandemic upended historic patterns. OPM CJPPD will continue to track whether this distribution stabilizes at current proportions or continues shifting in the year ahead.

Table 2 - First-of-Month Totals

	2022		2021		% Change	
	Jan. 1	Feb. 1	Mar. 1	Mar. 1	Monthly	Annual
DOC Facilities						
Federal/Other	100	113	108	118	-4.4%	-8.5%
Sentenced	5,400	5,583	5,640	5,668	1.0%	-0.5%
Special Parole	332	327	315	344	-3.7%	-8.4%
Pretrial	3,590	3,696	3,770	2,920	2.0%	29.1%
Total	9,422	9,719	9,833	9,050	1.2%	8.7%
DOC Community						
Transfer Parole	56	48	50	174	4.2%	-71.3%
Parole/ Parcom Total	797	776	761	918	-1.9%	-17.1%
Parole	636	618	603	739	-2.4%	-18.4%
Parcom @ CT	161	158	158	179	0.0%	-11.7%
Furlough	22	27	24	25	-11.1%	-4.0%
Trans Placement	42	49	54	82	10.2%	-34.1%
DUI/Home confine.	59	60	68	20	13.3%	240.0%
Halfway House Total	815	817	827	801	1.2%	3.2%
Comm Release	359	341	341	381	0.0%	-10.5%
TS	15	10	12	8	20.0%	50.0%
Parole	141	152	153	126	0.7%	21.4%
Transfer Parole	20	17	14	22	-17.6%	-36.4%
Special Parole	280	297	307	264	3.4%	16.3%
TS	122	127	132	258	3.9%	-48.8%
Nursing home	0	0	0	0	-	-
Special Parole	1,349	1,327	1,301	1,877	-2.0%	-30.7%
Total	3,262	3,231	3,217	4,155	-0.4%	-22.6%

Table 2a - Monthly Admissions, Releases, & Discharges

	2022		2021		% Change	
	DEC	JAN	FEB	FEB	Monthly	Annual
Admissions						
Federal/Other	22	28	36	16	28.6%	125.0%
Remands	105	118	96	93	-18.6%	3.2%
DUI	2	1	0	3	-100.0%	-100.0%
Transfer Parole	1	2	1	1	-50.0%	0.0%
Parole	23	22	20	15	-9.1%	33.3%
Trans Plac/Furlough	1	2	2	4	0.0%	-50.0%
HWH	24	28	27	12	-3.6%	125.0%
TS	4	7	6	8	-14.3%	-25.0%
Special Parole	50	56	40	50	-28.6%	-20.0%
New Sentence	82	268	175	55	-34.7%	218.2%
VOP	12	45	37	17	-17.8%	117.6%
Pretrial	855	799	897	647	12.3%	38.6%
Total	1,064	1,213	1,204	811	-0.7%	48.5%
Releases and discharges						
Transfer Parole	14	11	9	15	-18.2%	-40.0%
Parole	53	57	52	54	-8.8%	-3.7%
Furlough	15	23	11	13	-52.2%	-15.4%
Trans. Placement	8	12	18	19	50.0%	-5.3%
Home Confinement DUI	20	15	24	3	60.0%	700.0%
HWH	87	56	83	63	48.2%	31.7%
TS	38	39	31	33	-20.5%	-6.1%
Special Parole	87	75	68	83	-9.3%	-18.1%
Nursing home	0	0	1	0	-	-
End of Sentence	334	299	294	288	-1.7%	2.1%
Total	656	587	591	571	0.7%	3.5%
Pretrial Releases*						
From Court	239	162	208	98	28.4%	112.2%
Release to Bond	368	256	326	247	27.3%	32.0%

* Totals reflect events, not individual offenders

DOC - Community Release Unit (CRU)

Table 3 - Case reviews and release metrics

	Cases				Approval Rate
	Reviewed	Approved	Denied	Continued	
DEC	312	138	36	54	44%
JAN	363	165	50	72	45%
FEB 22	346	156	48	75	45%
FEB 21	212	93	35	27	44%

Note: Figures published here are based on the operational data available at the time of publication. Data in subsequent issues may not agree.

Board of Pardons and Paroles

Table 4 - Parole hearings, new cases

	Parole Hearings	Paroles granted	Grant rate	Granted: Prior Year	Granted: Two Years Prior
DEC	83	51	61%	65	68
JAN	61	37	61%	50	63
FEB	73	43	59%	51	53

Table 4a - Other BOPP actions

	Reparole from revocation	Reparole from rescission	Closed interest cases	Special parole cases	Transfer parole cases
DEC	45	0	14	23	16
JAN	31	1	17	13	11
FEB 2022	43	0	29	6	12
FEB 2021	20	0	11	11	22

The Pretrial Population

Table 5 - Bond ranges for pretrial detainees

Bond amount	Jan. 1, 2022	Feb. 1, 2022	Mar. 1, 2022	Mar. 1, 2021
Less than \$20K	417	457	472	397
\$20K to <\$50K	449	449	447	378
\$50K to <\$100K	591	580	573	476
\$100K or higher	2,371	2,404	2,403	1,887
Persons w/bonds	3,828	3,890	3,895	3,138
Over \$1M	424	426	426	317

Table 5a - Pretrial, weeks since admission

Weeks since last DOC admit	Jan. 1, 2022	Feb. 1, 2022	Mar. 1, 2022	Mar. 1, 2021
< 1 week	235	294	288	264
1 to < 3 weeks	216	226	251	194
3 to < 10 weeks	721	634	631	455
10 to < 30 weeks	1,115	1,192	1,157	849
30 wks or more	1,542	1,547	1,571	1,379
Pretrial prisoners	3,829	3,893	3,898	3,141

Table 5b - Pretrial admits, new offenders

	DEC 2021	JAN 2022	FEB 2022	FEB 2021
Arraignments	2,018	1,834	2,039	1,347
Pretrial Admits	855	799	897	647
New to DOC	226	191	233	154
% New	26%	24%	26%	24%

Court Support Services Division

Table 6 - The jail reinterview program

	Pretrial admissions	Offender interviews	Offenders released	Released last year
DEC	855	817	231	164
JAN	799	819	118	150
FEB	897	766	203	138

Table 6a - Pretrial bail and probation caseloads

	Pretrial Bail Case Starts	Client Supv. Starts	Split Sentence Starts	Pretrial bail cases
DEC	2,050*	1,498	231	12,665*
JAN	2,050*	1,583	212	12,665*
FEB	2,050*	1,447	219	12,665*
FEB '21	2,050*	676	183	12,665*

* CSSD estimates

Chart 3 – Prison Population

First week of the month, avg. daily count (ADC)

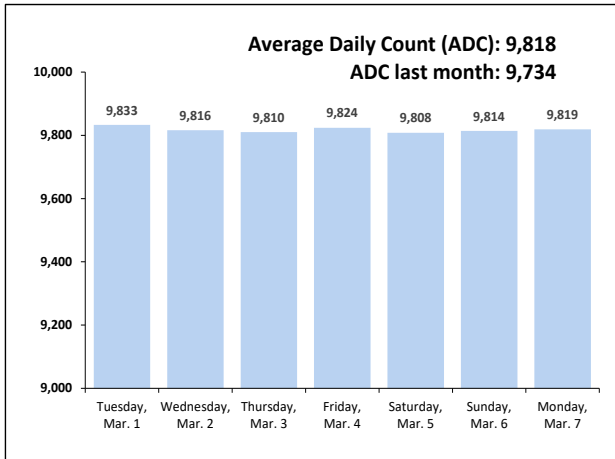


Chart 6 – Monthly DOC Admissions

February 2021 through February 2022

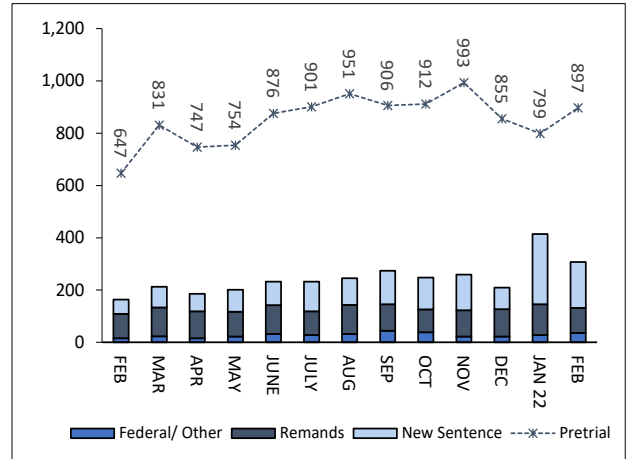


Chart 4 – Prison Population, First-of-Month

2019, 2020, 2021, and 2022

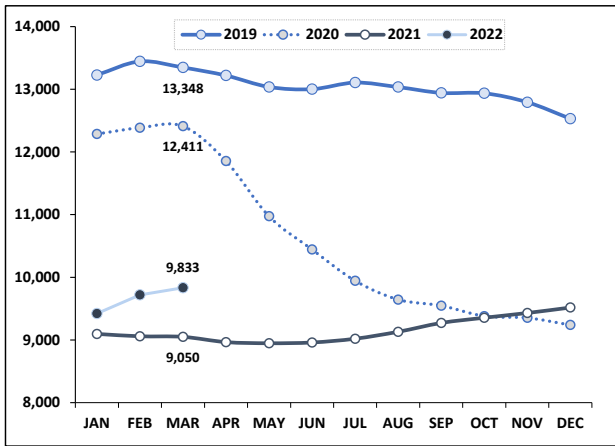


Chart 7 – Remands From Community Release

February 2022

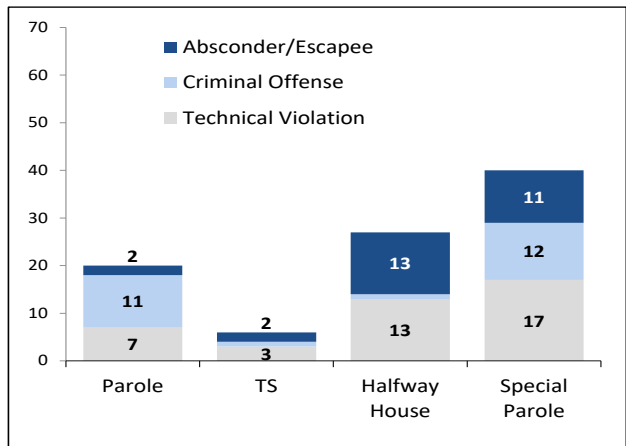


Chart 5 – Statewide Arrests

2021 and 2022

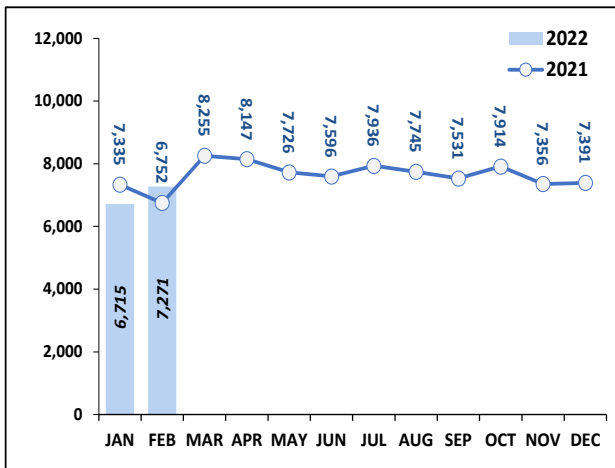
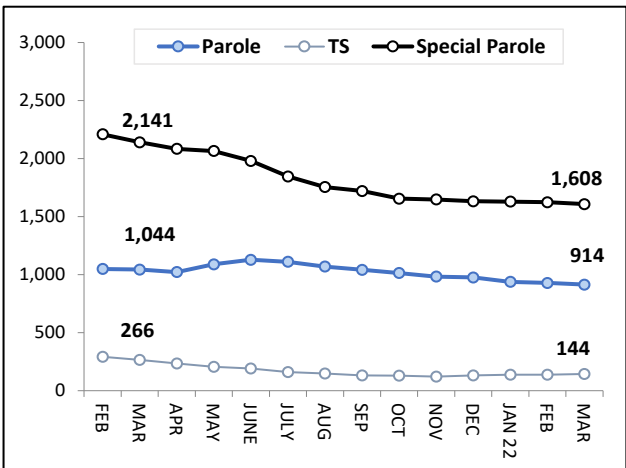


Chart 8 – DOC Community Supervision

Feb. 1, 2021 through Mar. 1, 2022



Note: Data for all charts, except for Chart 5, was supplied by CT DOC. Data for Chart 5 are for new case starts in the state Criminal Motor Vehicle System (CRMVS). Chart 8 includes offenders in halfway houses.