

OPM - Criminal Justice Policy & Planning Division

Monthly Indicators Report

Highlights

- Connecticut’s correctional population declined 1.0% to start 2022. DOC facilities held 9,422 individuals on January 1, compared to 9,518 as of December 1, 2021. The January 1, 2022 correctional population is 3.6% larger than the population one year ago (see Table 2).
- Admissions fell by 15.0% in December 2021, driven by a 13.9% reduction in pretrial admissions (993 to 855 accused). New sentence admissions also declined from 136 to 82 during this period.
- Releases and discharges did not change significantly in December 2021. December’s 235 discretionary releases were in line with November’s 261 releases, as were end of sentence discharges (334 to 315).
- The DOC community supervision population totaled 3,262 on January 1, similar to December 2021’s count of 3,289. The community supervision population decreased by 25.3% however, when compared to one year ago.
- The probation population held steady over the past month, averaging a daily count of 30,155 in December compared to 30,096 in November. The number of individuals beginning probation during this period fell by 11.3% (see Table 6a).

Correction Population Forecast

To begin 2022, the correctional population’s average daily count for the first week of January stood at 9,456. OPM’s forecast amount of 8,864 underestimated the average daily count by 592 individuals, a difference of 6.7%. Overall, the gap between OPM’s forecast and the actual correctional population remained steady from last month heading into the penultimate month of the forecast period. Of note is the forecast’s anticipation of the modest cyclical contraction each December to January. An increase in the population by February, which we call the “January bump,” typically follows the year-end contraction. Chart 1 below shows both the year-end contraction and the January bump.

OPM forecasts the number of people held in Connecticut jails and prisons to increase 1.4% by the first week of February 2022. This month we will be watching closely to see whether the seasonal pattern holds. The recent wave of the Omicron COVID-19 variant and its widespread impacts bring considerable uncertainty to start the year. Depending on Omicron’s effects across the state, this current wave may disrupt the typical seasonal pattern. At the same time, with the pandemic adaptations implemented across the system to date, OPM does not anticipate as large a shift in trends as experienced with COVID’s spring 2020 onset. OPM will be monitoring indicators closely to assess Omicron’s further impacts upon justice system operations as 2022 proceeds.

TABLE 1 – Correction Population Forecast

	Avg. Daily Count	OPM 2021 Forecast	Inmate difference
JAN '21	9,106	-	-
FEB	9,044	9,044	-
MAR	9,048	9,020	-28
APR	8,931	8,999	68
MAY	8,955	8,957	2
JUN	8,965	8,914	-51
JUL	9,009	8,890	-119
AUG	9,143	8,869	-274
SEP	9,253	8,827	-426
OCT	9,357	8,890	-467
NOV	9,426	8,908	-518
DEC	9,530	8,924	-606
JAN '22	9,456	8,864	-592
FEB		8,986	-

Avg. Daily Count (ADC) for 1st week of month

Chart 1 – Actual Correction Population Against the OPM Forecasts
January 1, 2020 through February 1, 2022

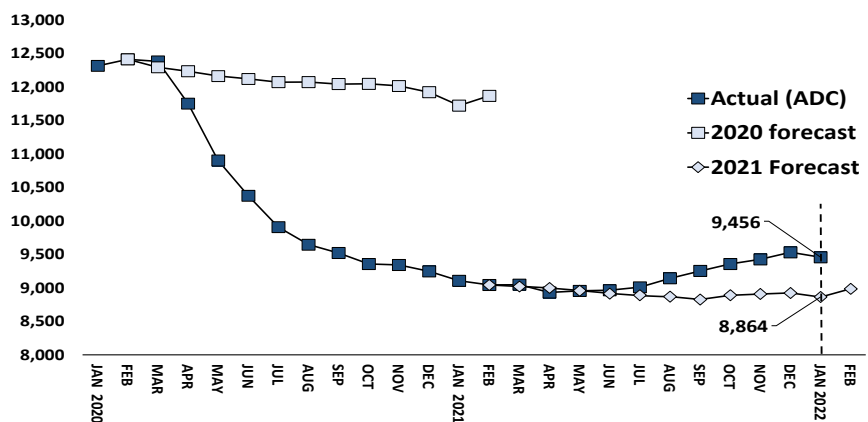


Chart 2 - Criminal Justice, Monthly Counts and Flows

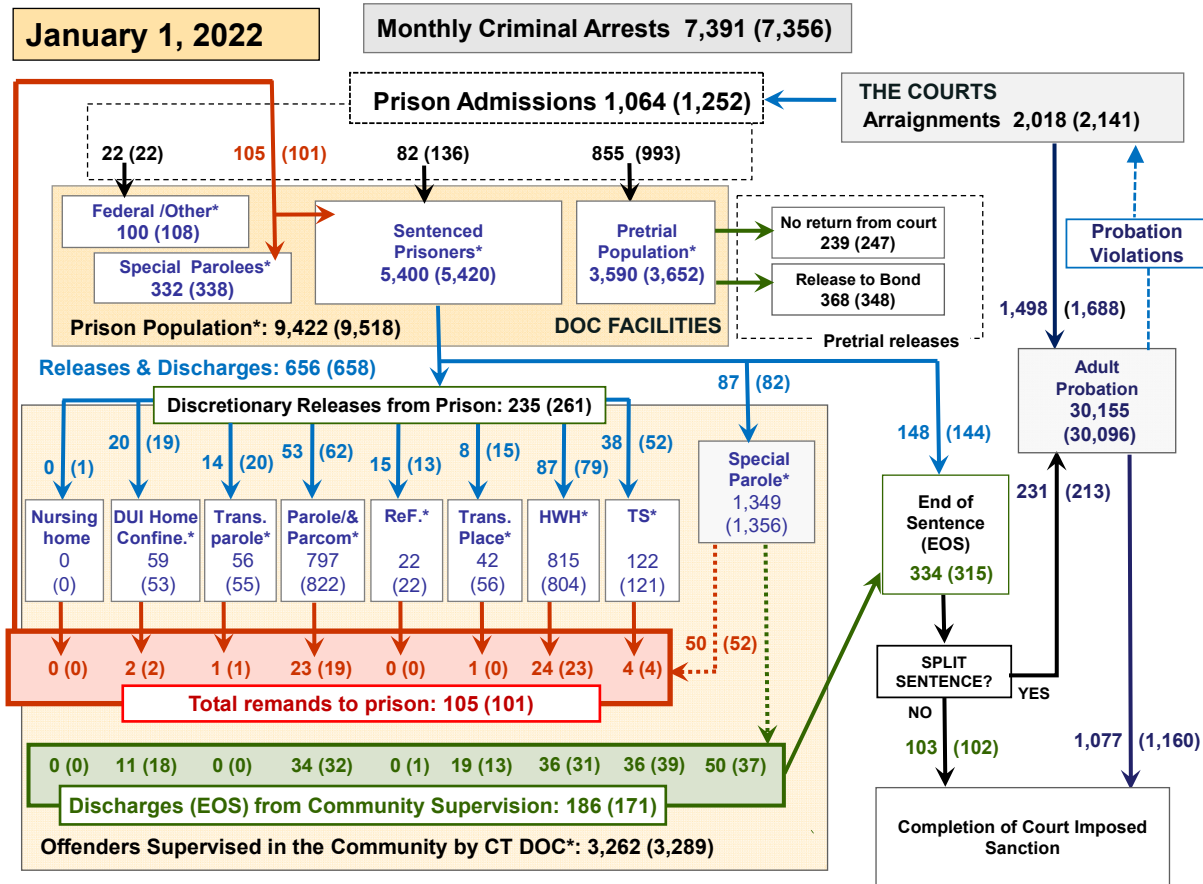
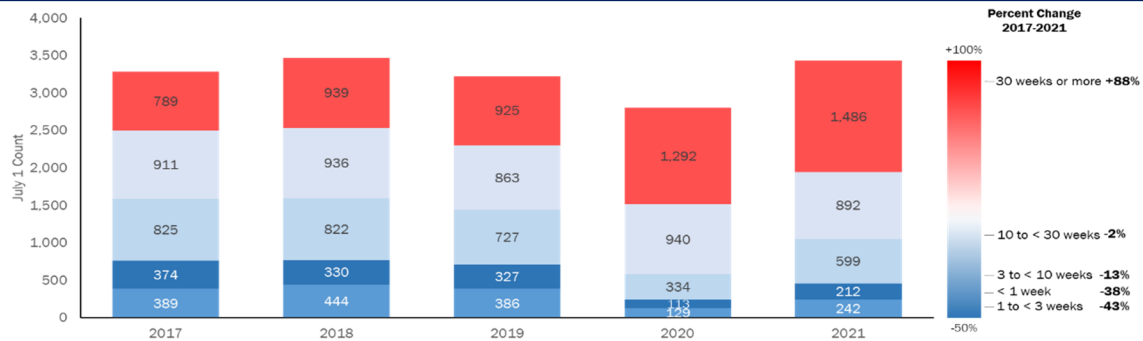


Chart 2 contains monthly operations data for December 2021 and daily counts reported on January 1, 2022. Asterisks (*) indicate the daily count on January 1st. Figures for last month are enclosed by parentheses. Sources: Arrests – CRMVS, via CJIS, Court and probation data - CSSD, all other data - CT DOC.

Spotlight: Pretrial Population Changes by Weeks Since Admission



Continuing OPM's look at changes over time to the pretrial population, this month we examine the length of time pretrial individuals stay in correctional facilities. This month's chart compares July 1 snapshots of the DOC population categorized by the number of weeks since the most recent admission from 2017 to 2021. Like last month's chart, we color-coded categories by percentage change between 2017 and 2021, varying intensities of red the larger the positive change, and declines by shades of blue. The resulting heat map highlights growth and declines in the different categories.

Between 2017 and 2021, the number held 30 weeks or more grew 88%, from 789 to 1,486 people. Considered with last month's chart, showing that 2021 contained a larger proportion of high-bond-amount individuals, these

changes may suggest people with more serious cases are comprising a larger share of the DOC pretrial population. Again, with the onset of COVID-19 impeding the holding of jury trials, more serious pending cases may be taking longer to dispose. Not represented in this chart are any changes over time in the number of people with pending charges diverted from admission to DOC. Future *Monthly* reports may include such analysis.

OPM posits that longer disposition times contributed to the growth of those spending 30 weeks or more held pretrial, and the 2021 rise in the DOC pretrial population. With court COVID mitigation strategies in place, OPM anticipates these increases will slow in 2022, and over time the distribution may look more like pre-COVID years.

Table 2 - First-of-Month Totals

	2021	2021	2022	2021	% Change	
	Nov. 1	Dec. 1	Jan. 1	Jan. 1	Monthly	Annual
DOC Facilities						
Federal/Other	95	108	100	138	-7.4%	-27.5%
Sentenced	5,452	5,420	5,400	5,819	-0.4%	-7.2%
Special Parole	355	338	332	353	-1.8%	-5.9%
Pretrial	3,529	3,652	3,590	2,787	-1.7%	28.8%
Total	9,431	9,518	9,422	9,097	-1.0%	3.6%
DOC Community						
Transfer Parole	55	55	56	197	1.8%	-71.6%
Parole/ Parcom Total	851	822	797	928	-3.0%	-14.1%
Parole	686	662	636	750	-3.9%	-15.2%
Parcom @ CT	165	160	161	178	0.6%	-9.6%
Furlough	22	22	22	37	0.0%	-40.5%
Trans Placement	57	56	42	67	-25.0%	-37.3%
DUI/Home confine.	54	53	59	35	11.3%	68.6%
Halfway House Total	746	804	815	809	1.4%	0.7%
Comm Release	342	344	359	391	4.4%	-8.2%
TS	11	10	15	12	50.0%	25.0%
Parole	132	154	141	119	-8.4%	18.5%
Transfer Parole	14	20	20	36	0.0%	-44.4%
Special Parole	247	276	280	251	1.4%	11.6%
TS	110	121	122	306	0.8%	-60.1%
Nursing home	0	0	0	0	-	-
Special Parole	1,401	1,356	1,349	1,989	-0.5%	-32.2%
Total	3,296	3,289	3,262	4,368	-0.8%	-25.3%

Table 2a - Monthly Admissions, Releases, & Discharges

	2021	2021	2021	2020	% Change	
	OCT	NOV	DEC	DEC	Monthly	Annual
Admissions						
Federal/Other	39	22	22	18	0.0%	22.2%
Remands	87	101	105	92	4.0%	14.1%
DUI	0	2	2	0	0.0%	-
Transfer Parole	1	1	1	4	0.0%	-75.0%
Parole	16	19	23	19	21.1%	21.1%
Trans Plac/Furlough	0	0	1	1	-	0.0%
HWH	27	23	24	20	4.3%	20.0%
TS	1	4	4	12	0.0%	-66.7%
Special Parole	42	52	50	36	-3.8%	38.9%
New Sentence	122	136	82	35	-39.7%	134.3%
VOP	25	27	12	5	-55.6%	140.0%
Pretrial	912	993	855	670	-13.9%	27.6%
Total	1,160	1,252	1,064	815	-15.0%	30.6%
Releases and discharges						
Transfer Parole	16	20	14	27	-30.0%	-48.1%
Parole	61	62	53	74	-14.5%	-28.4%
Furlough	15	13	15	15	15.4%	0.0%
Trans. Placement	10	15	8	16	-46.7%	-50.0%
Home Confinement DUI	16	19	20	9	5.3%	122.2%
HWH	53	79	87	73	10.1%	19.2%
TS	26	52	38	38	-26.9%	0.0%
Special Parole	90	82	87	72	6.1%	20.8%
Nursing home	0	1	0	0	-	-
End of Sentence	305	315	334	350	6.0%	-4.6%
Total	592	658	656	674	-0.3%	-2.7%
Pretrial Releases*						
From Court	252	247	239	106	-3.2%	125.5%
Release to Bond	320	348	368	333	5.7%	10.5%

* Totals reflect events, not individual offenders

DOC - Community Release Unit (CRU)

Table 3 - Case reviews and release metrics

	Cases				Approval Rate
	Reviewed	Approved	Denied	Continued	
OCT	301	137	38	54	46%
NOV	315	152	42	55	48%
DEC 21	312	138	36	54	44%
DEC 20	245	109	40	27	44%

Note: Figures published here are based on the operational data available at the time of publication. Data in subsequent issues may not agree.

Board of Pardons and Paroles

Table 4 - Parole hearings, new cases

	Parole Hearings	Paroles granted	Grant rate	Granted: Prior Year	Granted: Two Years Prior
OCT	80	49	61%	78	72
NOV	76	47	62%	36	67
DEC	83	51	61%	65	68

Table 4a - Other BOPP actions

	Reparole from revocation	Reparole from rescission	Closed interest cases	Special parole cases	Transfer parole cases
OCT	30	0	14	18	19
NOV	50	1	25	20	16
DEC 2021	45	0	14	23	16
DEC 2020	22	1	17	15	28

The Pretrial Population

Table 5 - Bond ranges for pretrial detainees

Bond amount	Nov. 1, 2021	Dec. 1, 2021	Jan. 1, 2022	Jan. 1, 2021
Less than \$20K	374	420	417	347
\$20K to < \$50K	432	467	449	369
\$50K to < \$100K	584	593	591	455
\$100K or higher	2,331	2,390	2,371	1,830
Persons w/bonds	3,721	3,870	3,828	3,001
Over \$1M	398	414	424	291

Table 5a - Pretrial, weeks since admission

Weeks since last DOC admit	Nov. 1, 2021	Dec. 1, 2021	Jan. 1, 2022	Jan. 1, 2021
< 1 week	317	289	235	189
1 to < 3 weeks	258	256	216	173
3 to < 10 weeks	658	760	721	502
10 to < 30 weeks	1,020	1,067	1,115	793
30 wks or more	1,471	1,511	1,542	1,346
Pretrial prisoners	3,724	3,883	3,829	3,003

Table 5b - Pretrial admits, new offenders

	OCT 2021	NOV 2021	DEC 2021	DEC 2020
Arraignments	2,029	2,141	2,018	1,526
Pretrial Admits	912	993	855	670
New to DOC	239	256	226	160
% New	26%	26%	26%	24%

Court Support Services Division

Table 6 - The jail reinterview program

	Pretrial admissions	Offender interviews	Offenders released	Released last year
OCT	912	812	238	148
NOV	993	850	200	180
DEC	855	817	231	164

Table 6a - Pretrial bail and probation caseloads

	Pretrial Bail Case Starts	Client Supv. Starts	Split Sentence Starts	Pretrial bail cases
OCT	2,050*	1,646	197	12,665*
NOV	2,050*	1,688	213	12,665*
DEC	2,050*	1,498	231	12,665*
DEC '20	2,050*	712	206	12,665*

* CSSD estimates

Chart 3 – Prison Population

First week of the month, avg. daily count (ADC)

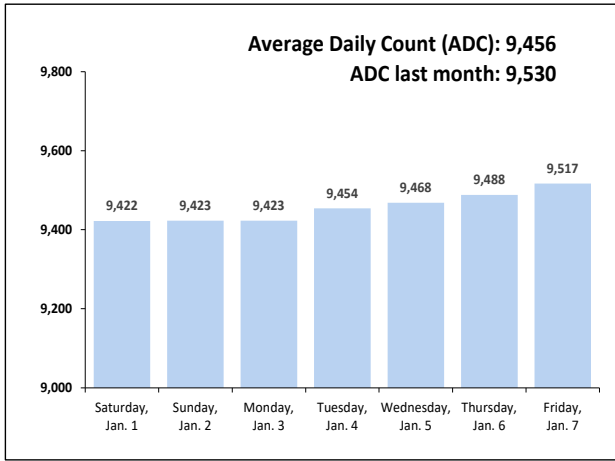


Chart 6 – Monthly DOC Admissions

December 2020 through December 2021

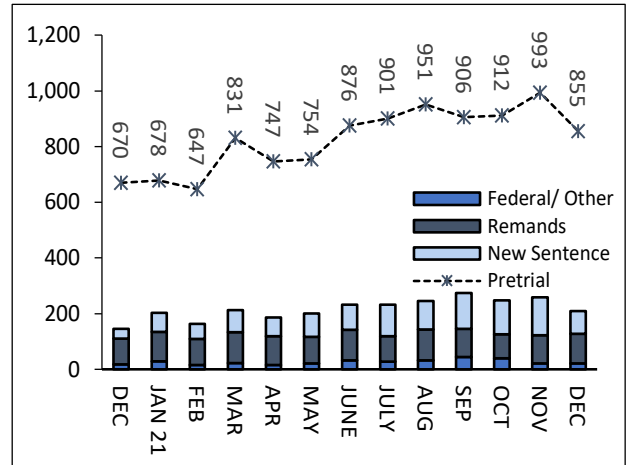


Chart 4 – Prison Population, First-of-Month

2019, 2020, 2021, and 2022

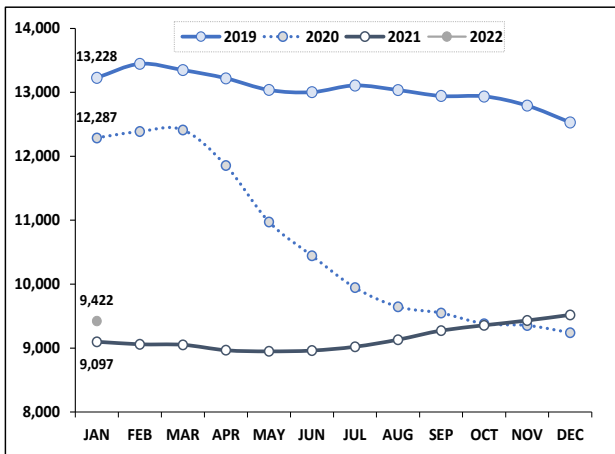


Chart 7– Remands From Community Release

December 2021

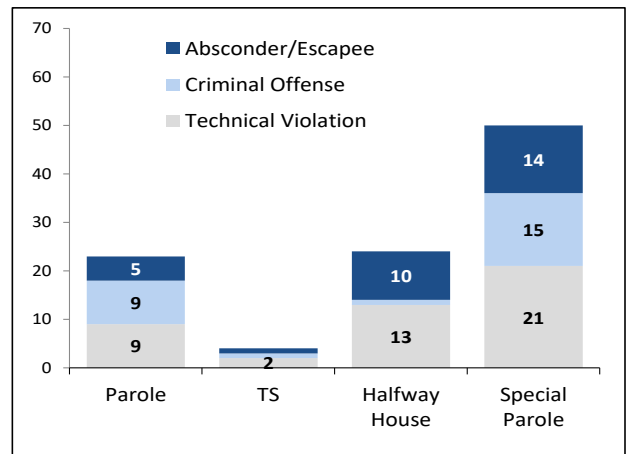


Chart 5 – Statewide Arrests

2020 and 2021

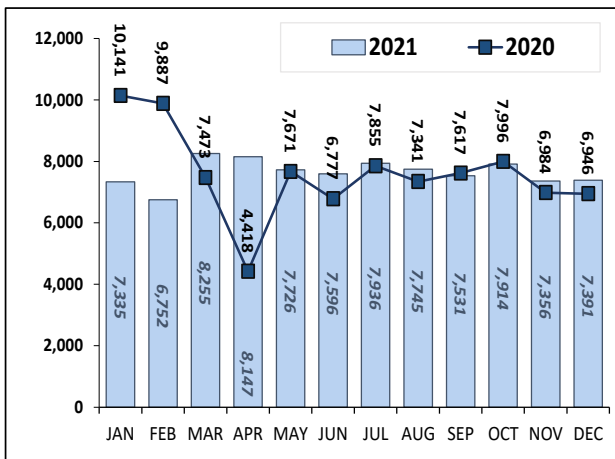
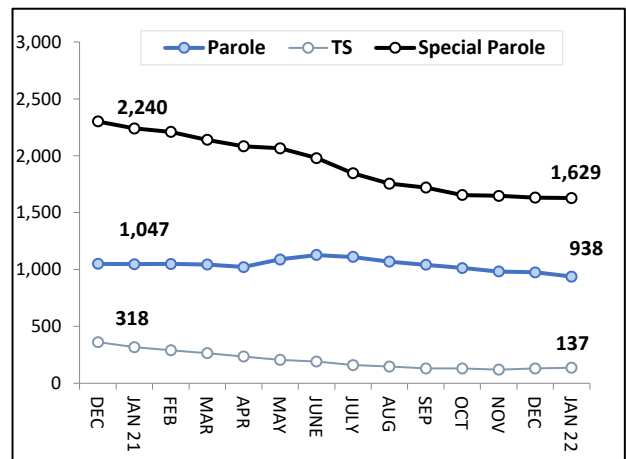


Chart 8 – DOC Community Supervision

Dec. 1, 2020 through Jan. 1, 2022



Note: Data for all charts, except for Chart 5, was supplied by CT DOC. Data for Chart 5 are for new case starts in the state Criminal Motor Vehicle System (CRMVS). Chart 8 includes offenders in halfway houses.