

OPM CJPPD - Criminal Justice Policy & Planning Division

Monthly Indicators Report

Highlights

- On February 1, Connecticut's prisons and jails held 9,719 individuals, a 297-person (3.2%) increase from January 1. Compared to one year prior, the facility population on the first of February is 7.3% larger (see Table 2).
- Arraignments declined by 9.1% between December 2021 and January 2022, from 2,018 to 1,834 arraignments. This month's arraignments were 27.6% higher than in January 2021, however (see Table 5b).
- New sentence admissions more than tripled between December 2021 and January 2022 (rising from 82 to 268 admissions). January 2022 saw the highest number of new sentence admissions over the past 12 months. As a result, total admissions were 37.7% greater than in January 2021 (see Chart 6).
- Pretrial releases dropped in January, with releases from court down 32.2% from December and releases to bond down 30.4%. Between December 2021 and January 2022, sentenced releases and discharges fell much less, by 10.5%, from 656 to 587, (see Table 2a).

Correction Population Forecast

Over the first week of February, Connecticut's correctional facility population averaged 9,734 people, holding 748 more individuals than the 8,986 OPM CJPPD estimated. At the close of our 2021-2022 forecast period, the variance from OPM's projections reached 8.3%, increasing from 6.7% in January.

A new calendar year typically includes an increase in the correctional population over the months of January into February, which we call the "January bump." This year's January bump totaled 3.2%, larger than any other January bump since OPM began forecasting. January bumps since 2008 averaged 1.5%, with only 2013 and 2016's increases somewhat near this year's, at 2.5% and 2.3% respectively.

This year's large bump reaffirms the difficulty anticipating population trends since the onset of the pandemic. January 2021 registered the only population decrease of any such month since OPM CJPPD began its forecast tracking. Conversely, now at the start of the third calendar year of the pandemic, we observe the largest January growth of any since 2008. Although Chart 1 demonstrates that OPM's forecast anticipated a January bump, the actual magnitude sharply exceeds projections. OPM CJPPD therefore will be monitoring trends through 2022 to determine whether they ultimately hew closer toward long-term expectations or continue to diverge.

TABLE 1 – Correction Population Forecast

	Avg. Daily Count	OPM 2021 Forecast	Inmate difference
JAN '21	9,106	-	-
FEB	9,044	9,044	-
MAR	9,048	9,020	-28
APR	8,931	8,999	68
MAY	8,955	8,957	2
JUN	8,965	8,914	-51
JUL	9,009	8,890	-119
AUG	9,143	8,869	-274
SEP	9,253	8,827	-426
OCT	9,357	8,890	-467
NOV	9,426	8,908	-518
DEC	9,530	8,924	-606
JAN '22	9,456	8,864	-592
FEB	9,734	8,986	-748

Avg. Daily Count (ADC) for 1st week of month

Chart 1 – Actual Correction Population Against the OPM CJPPD Forecasts

January 1, 2020 through February 1, 2022

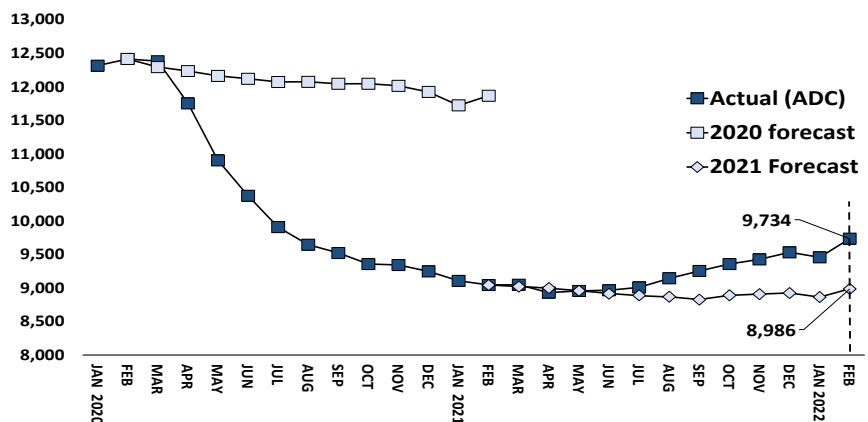


Chart 2 - Criminal Justice, Monthly Counts and Flows

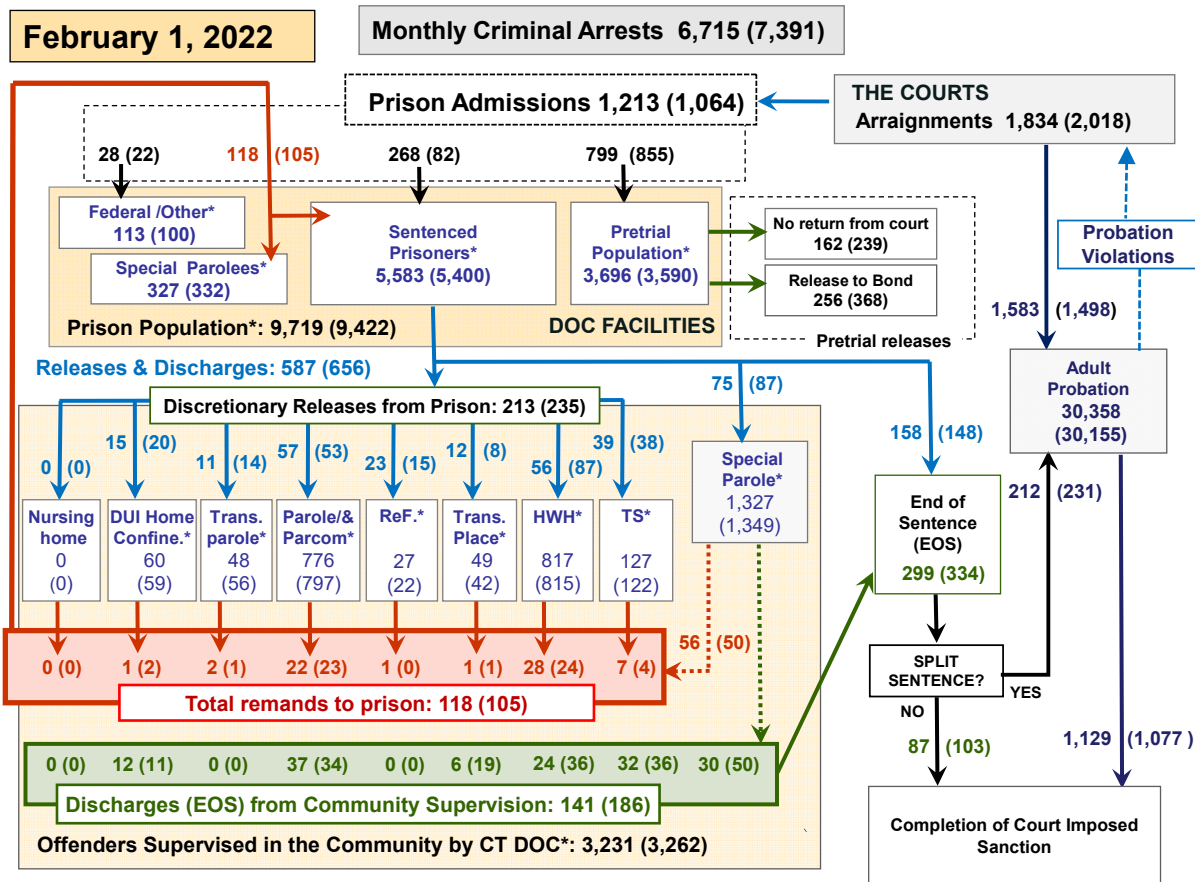
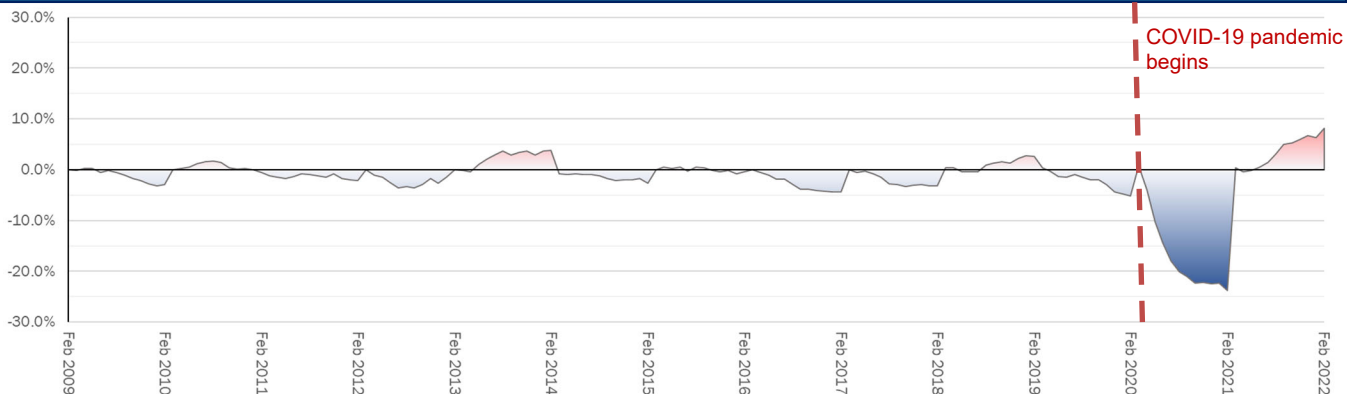


Chart 2 contains monthly operations data for January 2022 and daily counts reported on February 1, 2022. Asterisks (*) indicate the daily count on February 1st. Figures for last month are enclosed by parentheses. Sources: Arrests – CRMVS, via CJIS, Court and probation data - CSSD, all other data - CT DOC.

Spotlight: OPM's Correctional Projection Performance, 2009-2022



As part of OPM CJPPD's annual forecasting process, we review the historic performance of our projections compared to the first of the month count of Connecticut DOC facilities. The chart above shows OPM's forecast performance by month as far back as our 2009–2010 projection.

As the chart demonstrates, OPM's population projections have performed well historically: Most years, the variances of the actual population from forecast estimates range within $\pm 5\%$ by the February end of reporting cycle. Because OPM CJPPD annually releases projections each February, most years exhibit a pattern where the gap between the actual count and our estimates grows widest

by the following February, prior to the release of new projections.

Only twice has the correction count varied from OPM's projections by more than 5% at the end of the reporting cycle: 2021 and this year, 2022. Following the pandemic's onset, the correction population dropped sharply below estimates by February 2021. On the other hand, 2022 correctional population growth exceeded OPM's estimates. Both instances point to COVID's disruption of long-term correction trends and the ongoing uncertainty of pandemic impacts on system operations. OPM's 2022–23 forecast, due to be released soon, will therefore continue to provide a crucial benchmark for assessing system behavior in the year ahead.

Table 2 - First-of-Month Totals

	2021	2022	2022	2021	% Change	
	Dec. 1	Jan. 1	Feb. 1	Feb. 1	Monthly	Annual
DOC Facilities						
Federal/Other	108	100	113	132	13.0%	-14.4%
Sentenced	5,420	5,400	5,583	5,746	3.4%	-2.8%
Special Parole	338	332	327	350	-1.5%	-6.6%
Pretrial	3,652	3,590	3,696	2,831	3.0%	30.6%
Total	9,518	9,422	9,719	9,059	3.2%	7.3%
DOC Community						
Transfer Parole	55	56	48	186	-14.3%	-74.2%
Parole/ Parcom Total	822	797	776	926	-2.6%	-16.2%
Parole	662	636	618	749	-2.8%	-17.5%
Parcom @ CT	160	161	158	177	-1.9%	-10.7%
Furlough	22	22	27	30	22.7%	-10.0%
Trans Placement	56	42	49	85	16.7%	-42.4%
DUI/Home confine.	53	59	60	31	1.7%	93.5%
Halfway House Total	804	815	817	795	0.2%	2.8%
Comm Release	344	359	341	386	-5.0%	-11.7%
TS	10	15	10	11	-33.3%	-9.1%
Parole	154	141	152	123	7.8%	23.6%
Transfer Parole	20	20	17	32	-15.0%	-46.9%
Special Parole	276	280	297	243	6.1%	22.2%
TS	121	122	127	280	4.1%	-54.6%
Nursing home	0	0	0	0	-	-
Special Parole	1,356	1,349	1,327	1,967	-1.6%	-32.5%
Total	3,289	3,262	3,231	4,300	-1.0%	-24.9%

Table 2a - Monthly Admissions, Releases, & Discharges

	2021	2021	2022	2021	% Change	
	NOV	DEC	JAN	JAN	Monthly	Annual
Admissions						
Federal/Other	22	22	28	29	27.3%	-3.4%
Remands	101	105	118	106	12.4%	11.3%
DUI	2	2	1	2	-50.0%	-
Transfer Parole	1	1	2	3	100.0%	-33.3%
Parole	19	23	22	21	-4.3%	4.8%
Trans Plac/Furlough	0	1	2	4	100.0%	-50.0%
HWH	23	24	28	18	16.7%	55.6%
TS	4	4	7	7	75.0%	0.0%
Special Parole	52	50	56	51	12.0%	9.8%
New Sentence	136	82	268	68	226.8%	294.1%
VOP	27	12	45	14	275.0%	221.4%
Pretrial	993	855	799	678	-6.5%	17.8%
Total	1,252	1,064	1,213	881	14.0%	37.7%
Releases and discharges						
Transfer Parole	20	14	11	22	-21.4%	-50.0%
Parole	62	53	57	65	7.5%	-12.3%
Furlough	13	15	23	13	53.3%	76.9%
Trans. Placement	15	8	12	29	50.0%	-58.6%
Home Confinement DUI	19	20	15	3	-25.0%	400.0%
HWH	79	87	56	80	-35.6%	-30.0%
TS	52	38	39	33	2.6%	18.2%
Special Parole	82	87	75	56	-13.8%	33.9%
Nursing home	1	0	0	0	-	-
End of Sentence	315	334	299	311	-10.5%	-3.9%
Total	658	656	587	612	-10.5%	-4.1%
Pretrial Releases*						
From Court	247	239	162	98	-32.2%	65.3%
Release to Bond	348	368	256	325	-30.4%	-21.2%

* Totals reflect events, not individual offenders

DOC - Community Release Unit (CRU)

Table 3 - Case reviews and release metrics

	Cases				Approval Rate
	Reviewed	Approved	Denied	Continued	
NOV	315	152	42	55	48%
DEC	312	138	36	54	44%
JAN 22	363	165	50	72	45%
JAN 21	265	118	45	27	45%

Note: Figures published here are based on the operational data available at the time of publication. Data in subsequent issues may not agree.

Board of Pardons and Paroles

Table 4 - Parole hearings, new cases

	Parole Hearings	Paroles granted	Grant rate	Granted: Prior Year	Granted: Two Years Prior
NOV	76	47	62%	36	67
DEC	83	51	61%	65	68
JAN	61	37	61%	50	63

Table 4a - Other BOPP actions

	Reparole from revocation	Reparole from rescission	Closed interest cases	Special parole cases	Transfer parole cases
NOV	50	1	25	20	16
DEC	45	0	14	23	16
JAN 2022	31	1	17	13	11
JAN 2021	23	1	11	17	17

The Pretrial Population

Table 5 - Bond ranges for pretrial detainees

Bond amount	Dec. 1, 2021	Jan. 1, 2022	Feb. 1, 2022	Feb. 1, 2021
Less than \$20K	420	417	457	366
\$20K to < \$50K	467	449	449	372
\$50K to < \$100K	593	591	580	463
\$100K or higher	2,390	2,371	2,404	1,843
Persons w/bonds	3,870	3,828	3,890	3,044
Over \$1M	414	424	426	303

Table 5a - Pretrial, weeks since admission

Weeks since last DOC admit	Dec. 1, 2021	Jan. 1, 2022	Feb. 1, 2022	Feb. 1, 2021
< 1 week	289	235	294	215
1 to < 3 weeks	256	216	226	172
3 to < 10 weeks	760	721	634	496
10 to < 30 weeks	1,067	1,115	1,192	831
30 wks or more	1,511	1,542	1,547	1,332
Pretrial prisoners	3,883	3,829	3,893	3,046

Table 5b - Pretrial admits, new offenders

	NOV 2021	DEC 2021	JAN 2022	JAN 2021
Arraignments	2,141	2,018	1,834	1,437
Pretrial Admits	993	855	799	678
New to DOC	256	226	191	171
% New	26%	26%	24%	25%

Court Support Services Division

Table 6 - The jail reinterview program

	Pretrial admissions	Offender interviews	Offenders released	Released last year
NOV	993	850	200	180
DEC	855	817	231	164
JAN	799	819	118	150

Table 6a - Pretrial bail and probation caseloads

	Pretrial Bail Case Starts	Client Supv. Starts	Split Sentence Starts	Pretrial bail cases
NOV	2,050*	1,688	213	12,665*
DEC	2,050*	1,498	231	12,665*
JAN	2,050*	1,583	212	12,665*
JAN '21	2,050*	708	192	12,665*

* CSSD estimates

Chart 3 – Prison Population

First week of the month, avg. daily count (ADC)

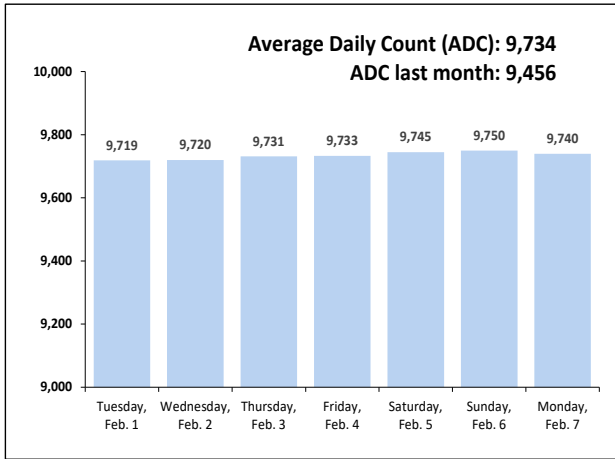


Chart 6 – Monthly DOC Admissions

January 2021 through January 2022

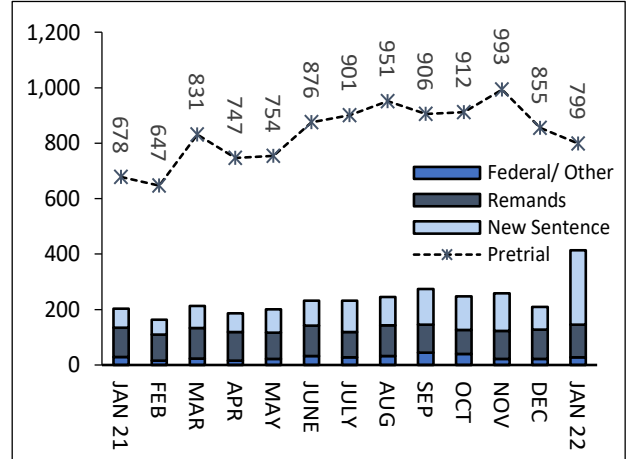


Chart 4 – Prison Population, First-of-Month

2019, 2020, 2021, and 2022

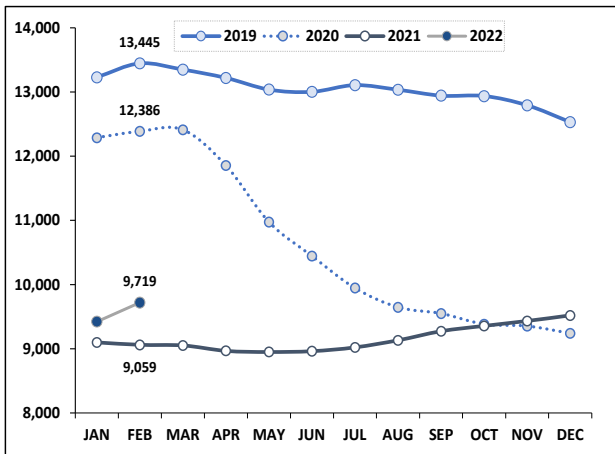


Chart 7– Remands From Community Release

January 2022

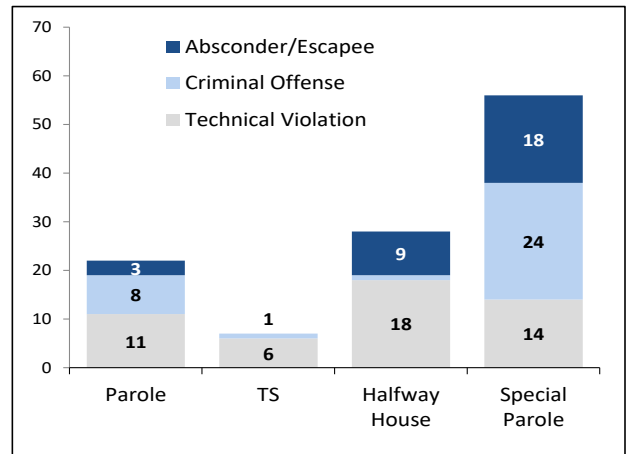


Chart 5 – Statewide Arrests

2021 and 2022

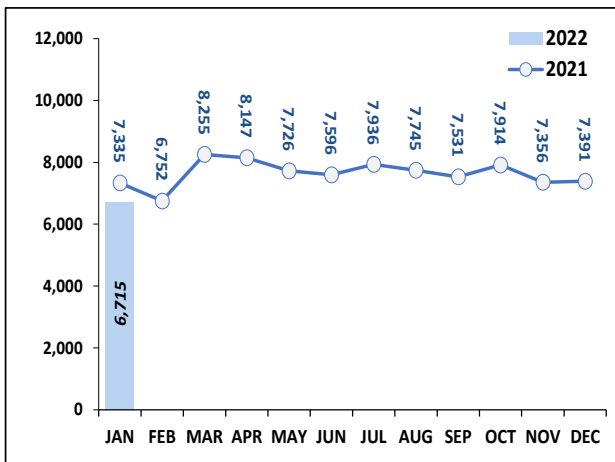
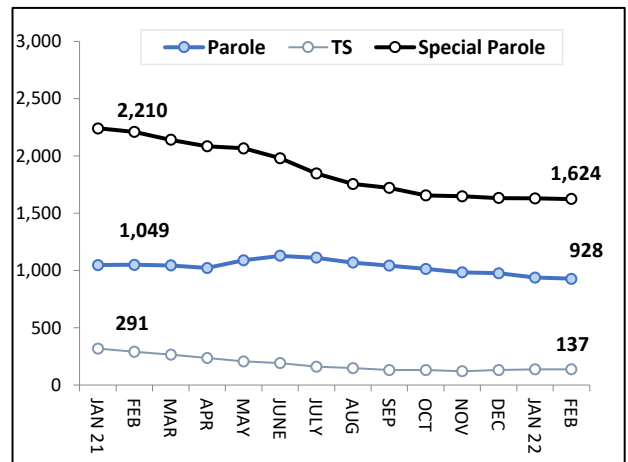


Chart 8 – DOC Community Supervision

Jan. 1, 2021 through Feb. 1, 2022



Note: Data for all charts, except for Chart 5, was supplied by CT DOC. Data for Chart 5 are for new case starts in the state Criminal Motor Vehicle System (CRMVS). Chart 8 includes offenders in halfway houses.