

# OPM - Criminal Justice Policy & Planning Division

## Monthly Indicators Report

### Highlights

- On April 1, 2021, Connecticut's prisons and jails held 8,966 people, dipping below 9,000 for the first time in 31 years. The sentenced count has fallen to 5,551; its lowest level since 1989.
- Month over month, statewide arrests increased by 23% from 6,752 to 8,255. Year over year arrests are also up, albeit by a smaller margin, 10%. Readers are urged to caution in interpreting these figures. Seasonal factors typically drive arrests higher in March when compared to February. Also, keep in mind that during the month of March 2020, responses to COVID-19 were initiated across society, criminal justice system included.
- With arrests up 22% from last month, it is not surprising that arraignments from lockup are also up compared to February's figures. What is surprising, however, is that the number of arraignments from lockup (chart 2) increased by a substantially larger margin - over 43% from 1,347 to 1,932.
- DOC community supervision counts are falling. On April 1, 2020 the number of people supervised in the community by the Department of Correction stood at 4,751. As of this writing that figure has fallen to 4,033 – a 15% reduction. This time last year as the department responded to the pandemic by prioritizing discretionary release, the number supervised in the community was growing, eventually peaking around 5,000 last summer before slowly declining as the throughput of the system slowed overall.

### Prison Population Forecast

Two months into the 2021 prison population forecast and the population closely matches what was predicted (see table 1 and chart 1 below). Accuracy, this soon after the forecast's release is usually quite good. 2020 was an obvious exception. Last year as the count began to decline rapidly in March, the forecast and the actual count began a wide divergence, separated by nearly 500 people in early April. The situation is entirely different this year with a gradually descending count, the prison population is tracking closely with the forecast issued in February.

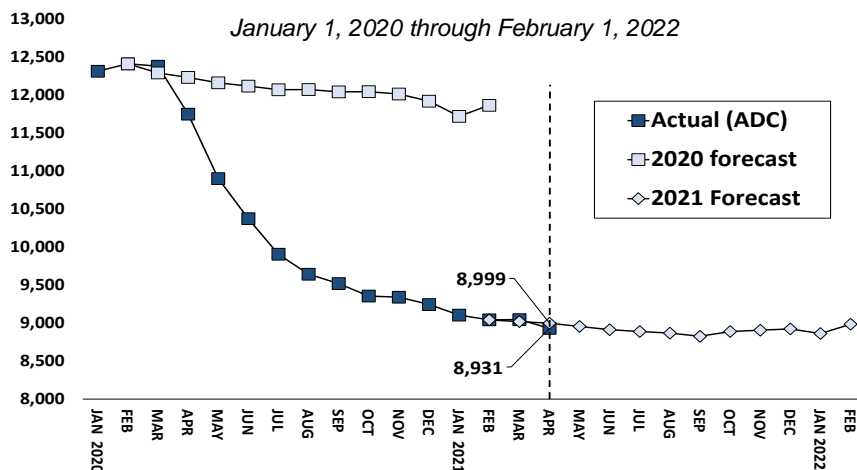
As the prison count gradually falls, there is potential evidence of increased activity in the various metrics OPM tracks. Process metrics such as statewide arrests, lock up arraignments, admissions to the DOC (pre-trial and sentenced), discretionary releases, end of sentence discharges, CRU case reviews, probation case starts and probation supervision closures all increased in March relative to February. Month over month increases can be attributed to seasonal factors, but considering magnitude of the change seen in March, we will pay close attention in the coming months to these indicators. It remains too early to draw any definite conclusions based on one month of data.

TABLE 1 – Prison Population Forecast

	Avg. Daily OPM 2021	Inmate
	Count	Forecast difference
JAN '21	9,106	-
FEB	9,044	9,044
MAR	9,048	9,020
APR	8,931	8,999
MAY		8,957
JUN		8,914
JUL		8,890
AUG		8,869
SEP		8,827
OCT		8,890
NOV		8,908
DEC		8,924
JAN '22		8,864
FEB		8,986

*Avg. Daily Count (ADC) for 1st week of month*

Chart 1 – Actual prison population against the OPM forecasts



## Chart 2 - Criminal justice, monthly counts and flows

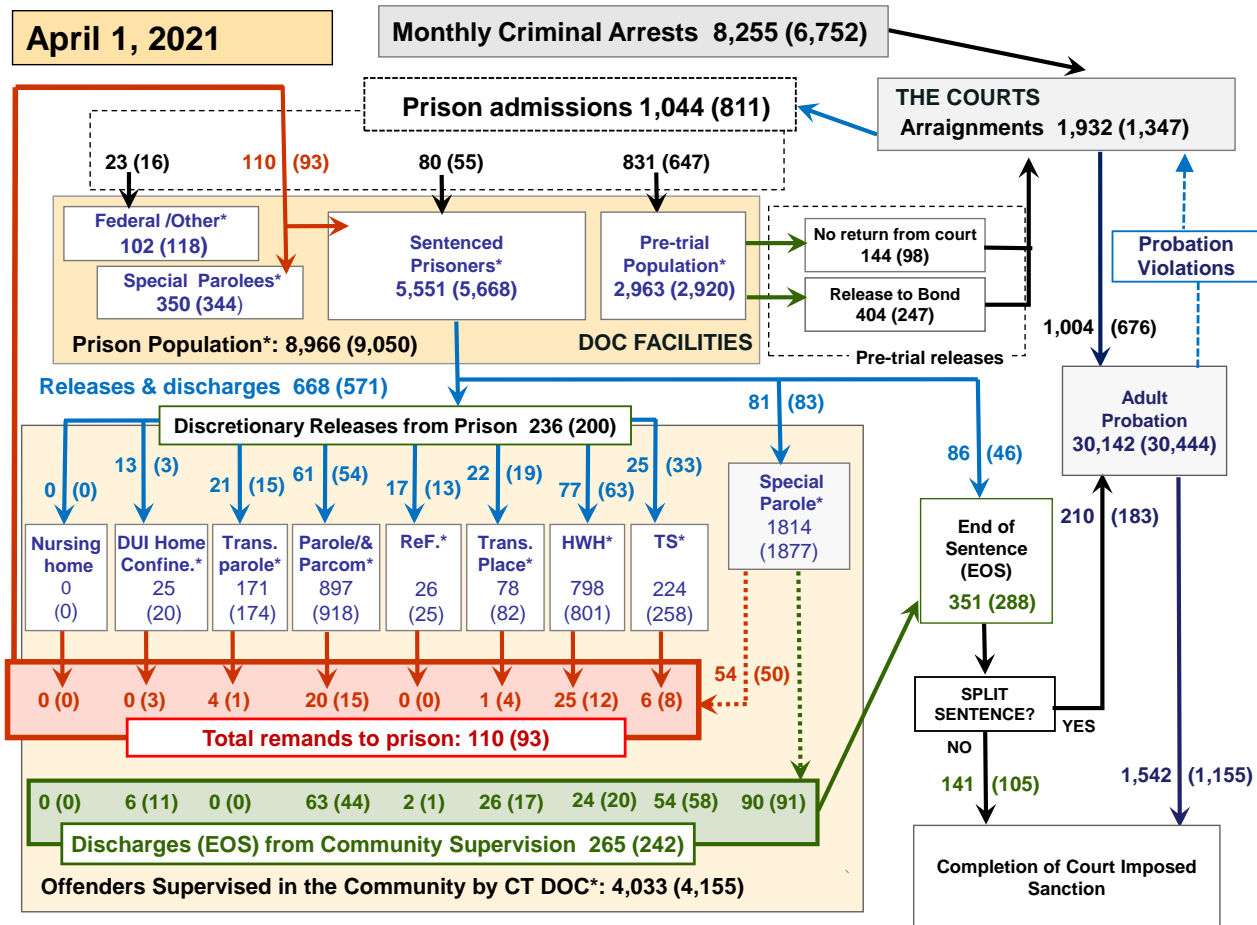
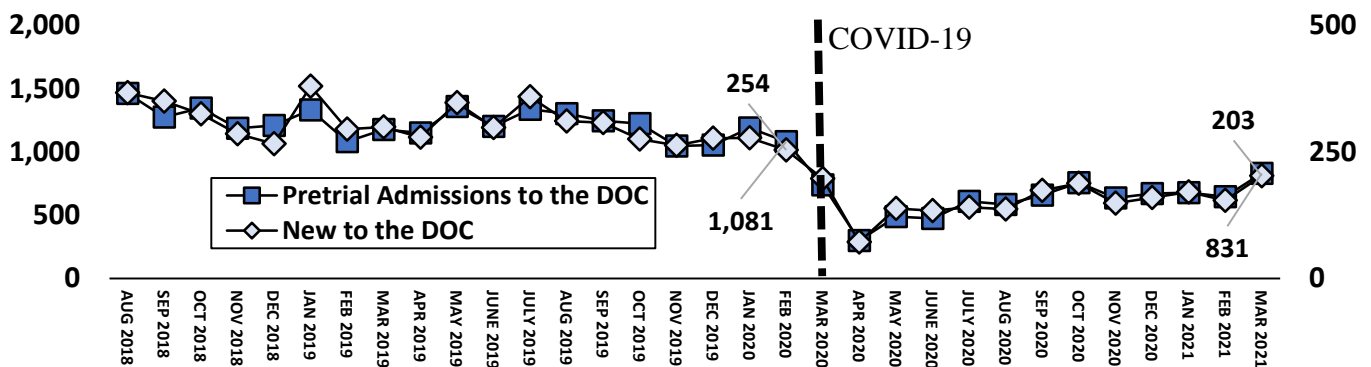


Chart 2 contains monthly operations data for March 2021 and daily counts reported on April 1, 2021. Asterisks (\*) indicate the daily count on April 1<sup>st</sup>. Figures for last month are enclosed by parentheses. Sources: Arrests – CRMVS, via CJIS, Court and probation data - CSSD, all other data - CT DOC.

## Chart 2a – First time pre-trial admits



To better describe the different populations that flow through the state's criminal justice system, this publication began reporting, in table 5b, the number of new people entering the prison system starting in January 2015. Over time fewer people, new or otherwise, have entered the prison system each year. Since we began tracking, the data shows that 75% of offenders admitted to prison on pre-trial status have a prior history of incarceration with the CT DOC. This relationship has weathered several systemic shocks, none so significant as the disruption caused by COVID 19 starting in March of last year.

The chart above plots both the total monthly admissions to the DOC's pre-trial detainee population (dark blue squares) as well as the number admitted for the first time (light blue diamonds). The relationship survives the COVID 19 induced constriction of admissions starting in March 2020, bottoming out in April. It also tracks closely as the number of admissions gradually rose through the remainder of 2020 and thus far into 2021. This analysis does not seek to explain why this relationship has endured, but to point out its existence with the hope of stimulating discussion.

**Table 2 - First-of-month totals**

	2021	2021	2021	2020	% Change	
	Feb. 1	Mar. 1	Apr. 1	Apr. 1	Monthly	Annual
<b>DOC Facilities</b>						
Federal/Other	132	118	102	117	-13.6%	-12.8%
Sentenced	5,746	5,668	5,551	8,595	-2.1%	-35.4%
Special Parole	350	344	350	349	1.7%	0.3%
Pre-trial	2,831	2,920	2,963	2,793	1.5%	6.1%
<b>Total</b>	<b>9,059</b>	<b>9,050</b>	<b>8,966</b>	<b>11,854</b>	<b>-0.9%</b>	<b>-24.4%</b>
<b>DOC Community</b>						
Transfer Parole	186	174	171	74	-1.7%	131.1%
Parole/ Parcom Total	926	918	897	920	-2.3%	-2.5%
Parole	749	739	717	760	-3.0%	-5.7%
Parcom @ CT	177	179	180	160	0.6%	12.5%
Furlough	30	25	26	12	4.0%	116.7%
Trans Placement	85	82	78	63	-4.9%	23.8%
DUI/Home confine.	31	20	25	105	25.0%	-76.2%
Halfway House Total	795	801	798	971	-0.4%	-17.8%
Comm Release	386	381	372	481	-2.4%	-22.7%
TS	11	8	11	23	37.5%	-52.2%
Parole	123	126	125	142	-0.8%	-12.0%
Transfer Parole	32	22	20	6	-9.1%	233.3%
Special Parole	243	264	270	319	2.3%	-15.4%
TS	280	258	224	485	-13.2%	-53.8%
Nursing home	0	0	0	5	-	-100.0%
Special Parole	1,967	1,877	1,814	2,116	-3.4%	-14.3%
<b>Total</b>	<b>4,300</b>	<b>4,155</b>	<b>4,033</b>	<b>4,751</b>	<b>-2.9%</b>	<b>-15.1%</b>

**Table 2a - Monthly admissions, releases & discharges**

	2021	2021	2021	2020	% Change	
	JAN	FEB	MAR	MAR	Monthly	Annual
<b>Admissions</b>						
Federal/Other	29	16	23	54	43.8%	-57.4%
Remands	106	93	110	112	18.3%	-1.8%
DUI/Trans Parole	5	4	4	3	-	-
Parole	21	15	20	20	33.3%	0.0%
Trans Plac/Furlough	4	4	1	1	-	-
HWH	18	12	25	22	108.3%	13.6%
TS	7	8	6	12	-25.0%	-50.0%
Special Parole	51	50	54	54	8.0%	0.0%
New Sentence	68	55	80	119	45.5%	-32.8%
VOP	14	17	21	28	-	-
Pre-trial	678	647	831	741	28.4%	12.1%
<b>Total</b>	<b>881</b>	<b>811</b>	<b>1,044</b>	<b>1,026</b>	<b>28.7%</b>	<b>1.8%</b>
<b>Releases and discharges</b>						
Transfer Parole	22	15	21	10	40.0%	110.0%
Parole	65	54	61	82	13.0%	-25.6%
Furlough	13	13	17	15	30.8%	13.3%
Trans. Placement	29	19	22	31	15.8%	-29.0%
Home Confinement DUI	3	3	13	44	333.3%	-70.5%
HWH	80	63	77	177	22.2%	-56.5%
TS	33	33	25	163	-24.2%	-84.7%
Special Parole	56	83	81	103	-2.4%	-21.4%
Nursing home	0	0	0	0	-	-
End of Sentence	311	288	351	506	21.9%	-30.6%
<b>Total</b>	<b>612</b>	<b>571</b>	<b>668</b>	<b>1,131</b>	<b>17.0%</b>	<b>-40.9%</b>
<b>Pre-trial Releases*</b>						
From Court	98	98	144	290	46.9%	-50.3%
Release to Bond	325	247	404	330	63.6%	22.4%

\* Totals reflect events, not individual offenders

**DOC - Community Release Unit (CRU)**

**Table 3 - Case reviews and release metrics**

	Cases				Approval Rate
	Reviewed	Approved	Denied	Continued	
JAN	265	118	45	27	45%
FEB	212	93	35	27	44%
MAR 21	351	161	65	45	46%
MAR 20	768	422	105	87	55%

Note: Figures published here are based on the operational data available at the time of publication. Data in subsequent issues may not agree.

**Board of Pardons and Paroles**

**Table 4 - Parole hearings, new cases**

	Parole Hearings	Paroles granted	Grant rate	Granted: Prior Year	Granted: Two Years Prior
JAN	94	50	53%	63	65
FEB	89	51	57%	53	83
MAR	91	58	64%	70	71

**Table 4a - Other BOPP actions**

	Reparole from revocation	Reparole from rescission	Closed interest cases	Special parole cases	Transfer parole cases
JAN	23	1	11	17	17
FEB	20	0	11	11	22
MAR 2021	20	0	27	10	25
MAR 2020	29	2	9	13	17

**The pre-trial population**

**Table 5 - Bond ranges for pre-trial detainees**

Bond amount	Feb. 1, 2021	Mar. 1, 2021	Apr. 1, 2021	Apr. 1, 2020
Less than \$20K	366	397	383	304
\$20K to <\$50K	372	378	388	386
\$50K to <\$100K	463	476	474	514
\$100K or higher	1,843	1,887	1,927	1,661
Persons w/bonds	3,044	3,138	3,172	2,865
Over \$1M	303	317	329	229

**Table 5a - Pre-trial, weeks since admission**

Weeks since last DOC admit	Feb. 1, 2021	Mar. 1, 2021	Apr. 1, 2021	Apr. 1, 2020
< 1 week	215	264	225	81
1 to < 3 weeks	172	194	198	176
3 to < 10 weeks	496	455	519	753
10 to < 30 weeks	831	849	821	856
30 wks or more	1,332	1,379	1,413	1,011
Pre-trial prisoners	3,046	3,141	3,176	2,877

**Table 5b - Pre-trial admits, new offenders**

	JAN 2020	FEB 2021	MAR 2021	MAR 2020
Arraignments	1,437	1,347	1,932	1,749
Pre-trial Admits	678	647	831	741
New to DOC	171	154	203	197
% New	25%	24%	24%	27%

**Court Support Services Division**

**Table 6 - The Jail Reinterview Program**

	Pretrial admissions	Offender interviews	Offenders released	Released last year
JAN	678	612	150	267
FEB	647	524	138	268
MAR	831	688	225	238

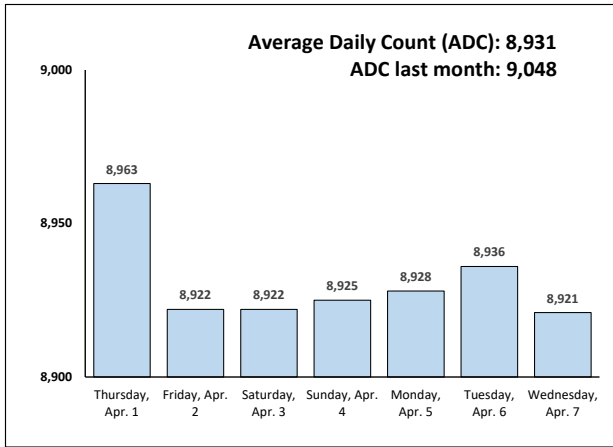
**Table 6a - Pre-trial bail and probation caseloads**

	Pretrial Bail Case Starts	Client Supv. Starts	Split Sentence Starts	Pretrial bail cases
JAN	2,050*	708	192	12,665*
FEB	2,050*	676	183	12,665*
MAR	2,050*	1,004	210	12,665*
MAR '20	2,050*	1,357	331	12,665*

\* CSSD estimates

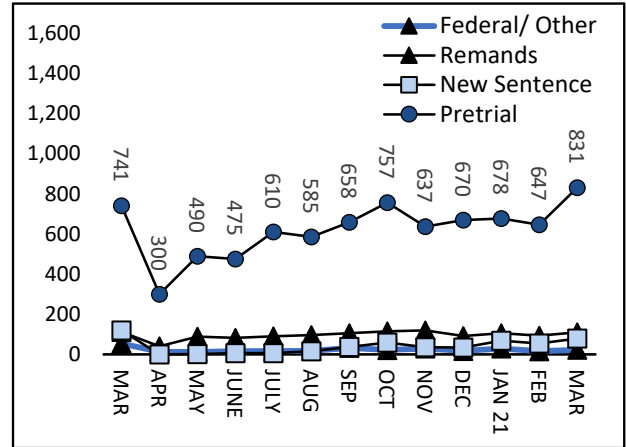
### Chart 3 – Prison population

First week of the month, avg. daily count (ADC)



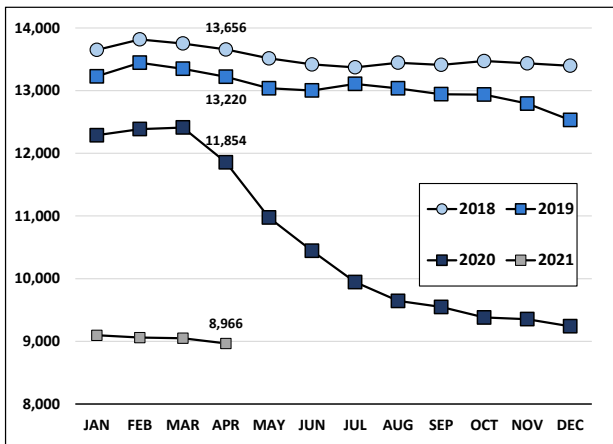
### Chart 6 – Monthly DOC Admissions

March 2020 through March 2021



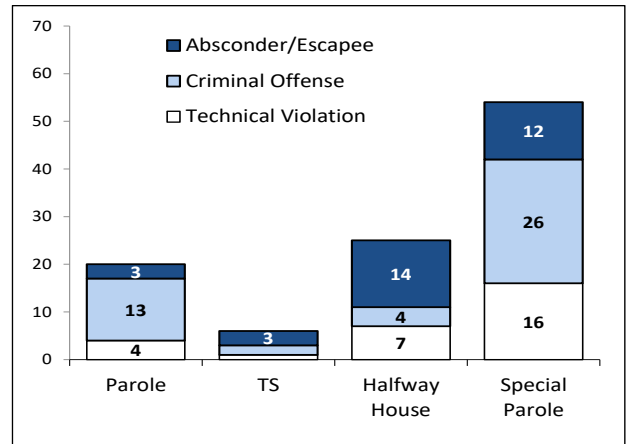
### Chart 4 – Prison population, first-of-month

2018, 2019, 2020 and 2021



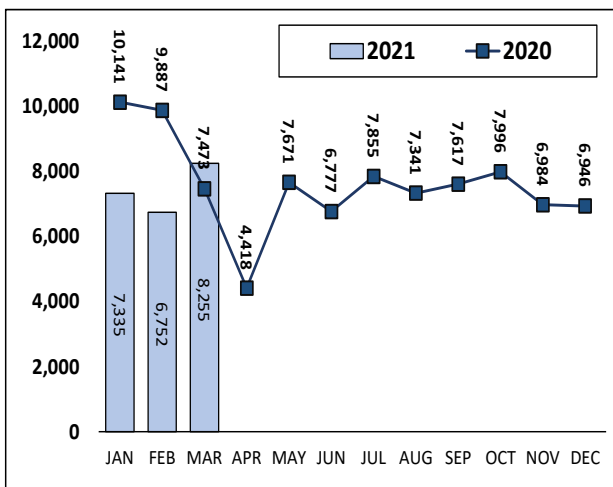
### Chart 7– Remands from community release

March 2021



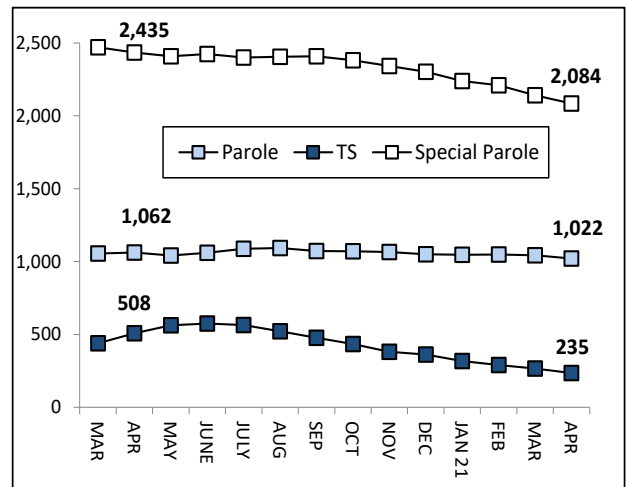
### Chart 5 – Statewide Arrests

2020 and 2021



### Chart 8 – DOC community supervision

Mar. 1, 2020 through Apr. 1, 2021



Note: Data for all charts, except for Chart 5, was supplied by CT DOC. Data for Chart 5 are for new case starts in the state Criminal Motor Vehicle System (CRMVS). Chart 8 includes offenders in halfway houses.