

OPM - Criminal Justice Policy & Planning Division

Monthly Indicators Report

Highlights

- On December 1, 2021, Connecticut's correctional facilities held 9,518 individuals, a small increase of 87 people from the prior month (9,431). Compared a year ago, the facility population increased 3.0%, from 9,240 to 9,518 people.
- Between the first of November and December, the pretrial population increased 3.5%, from 3,529 to 3,652 people. This increase is larger than the 1.8% growth occurring between October and November. Although the amplitude of monthly growth has varied, the pretrial population has been on a general upswing since December 2020.
- For the first time since March 2021, the probation supervision population surpassed 30,000 individuals, climbing to 30,096 people in November 2021. This rise corresponds with an 142.5% increase in probation starts between this November and last (from 696 in 2020 to 1,688 starts in 2021).
- DOC community releases increased in November, most notably with Transitional Supervision (TS) releases doubling from October (52 from 26), and releases to halfway houses increasing 49.1% (79 from 53 in October). Even with these recent increases, both December 1 DOC TS and halfway house populations remain lower than one year ago (See Table 2).

Correction Population Forecast

The correction population's average daily count of 9,530 people exceeds OPM's December estimate by 606 individuals, raising the percent difference to 6.8%, up a percentage point from November (5.8%). 2021 correction population growth overall remains modest, however, with December's count just 3% higher than one year ago.

As we have covered in recent *Monthly* reports, the DOC pretrial population accounts for much of the DOC population changes. This population grew 123 people (3.5%) from over the prior month, from November 1 to December 1. The sentenced population, on the other hand, declined just slightly (<1%). November admissions, including those for pretrial and new sentences, outpaced all releases and discharges, including pretrial releases, by 15.8%. Yet total discharges and releases rebounded notably in November, rising 11.1% from last month to reach the 2020 volume.

TABLE 1 – Correction Population Forecast

	Avg. Daily OPM 2021 Count	Forecast	Inmate difference
JAN '21	9,106	-	-
FEB	9,044	9,044	-
MAR	9,048	9,020	-28
APR	8,931	8,999	68
MAY	8,955	8,957	2
JUN	8,965	8,914	-51
JUL	9,009	8,890	-119
AUG	9,143	8,869	-274
SEP	9,253	8,827	-426
OCT	9,357	8,890	-467
NOV	9,426	8,908	-518
DEC	9,530	8,924	-606
JAN '22		8,864	-
FEB		8,986	-

Avg. Daily Count (ADC) for 1st week of month

Pretrial admissions have risen toward pre-pandemic levels recently, while releases and discharges have yet to do so. This dynamic leads to near-term correction population growth. Yet, as 2021 ends, we anticipate seasonal factors to temper this growth. OPM, along with system stakeholders, will continue examining correction population trends for key changes in 2022.

Chart 1 – Actual Correction Population Against the OPM Forecasts
January 1, 2020 through February 1, 2022

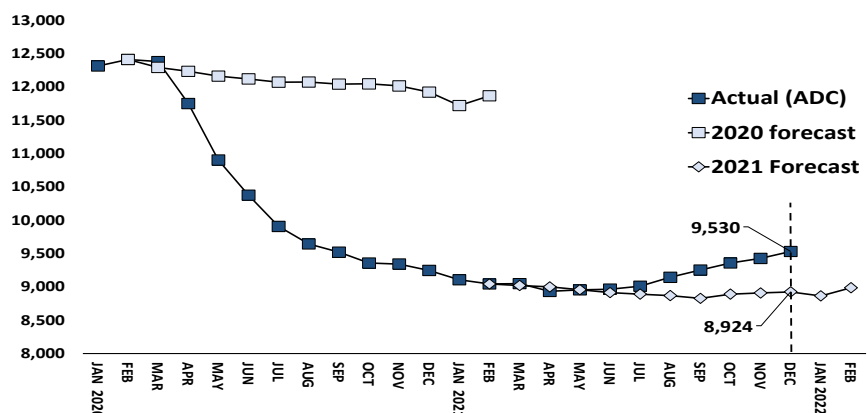


Chart 2 - Criminal Justice, Monthly Counts and Flows

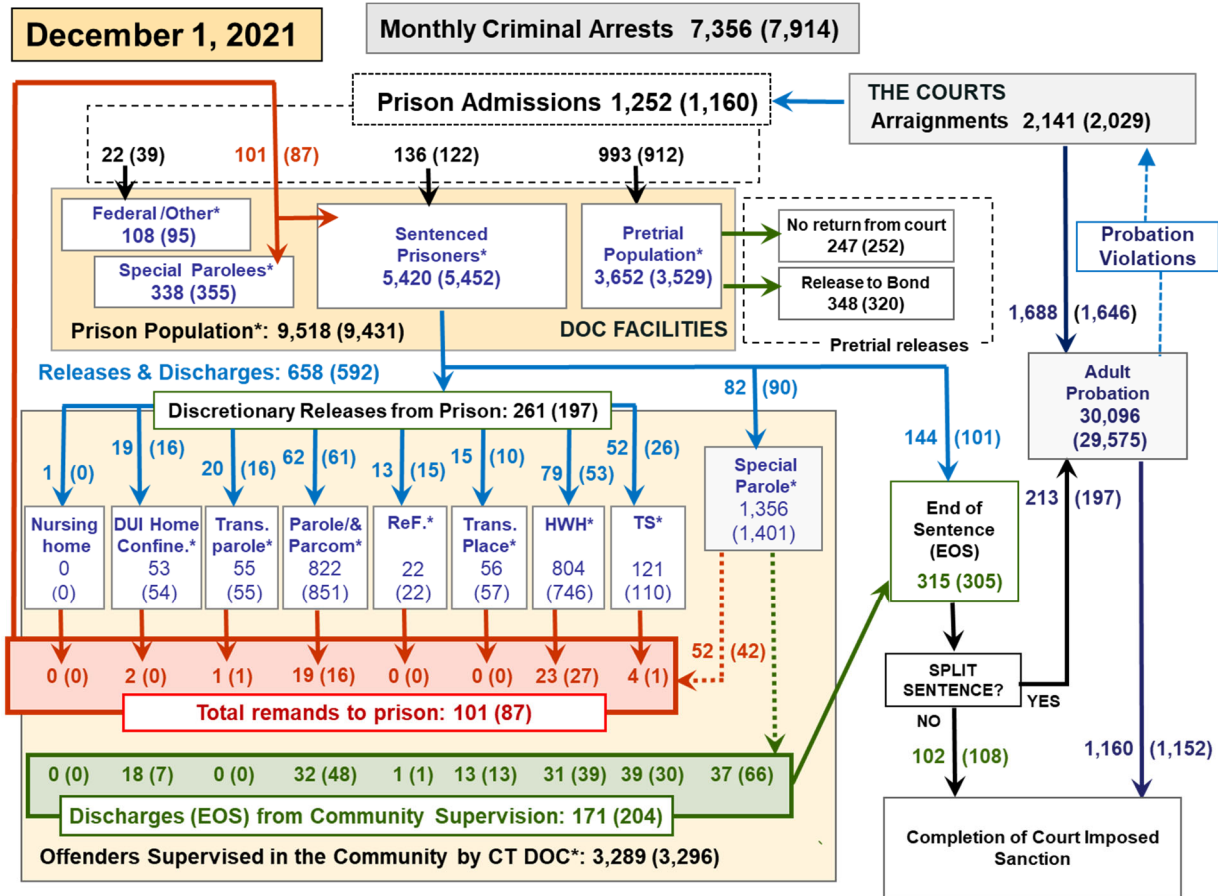
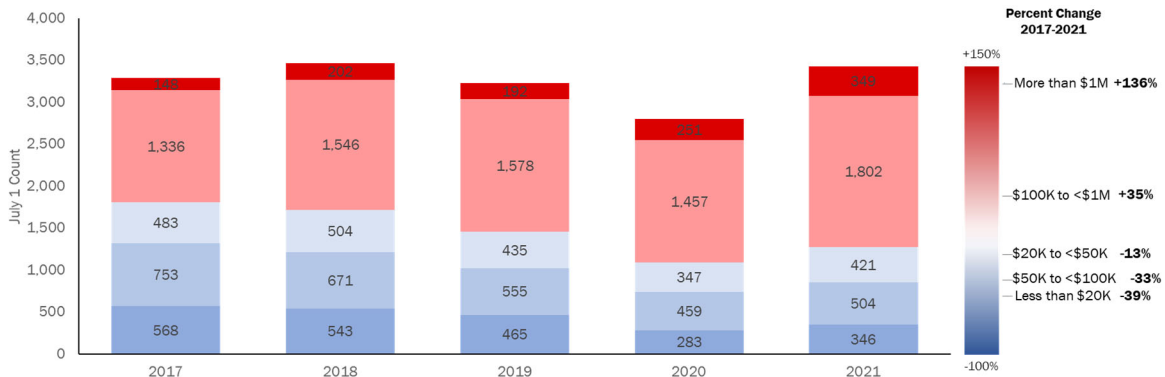


Chart 2 contains monthly operations data for November 2021 and daily counts reported on December 1, 2021. Asterisks (*) indicate the daily count on December 1st. Figures for last month are enclosed by parentheses. Sources: Arrests – CRMVS, via CJIS, Court and probation data - CSSD, all other data - CT DOC.

Spotlight: Pretrial Correction Population Changes by Bond Amounts



With recent pretrial growth, OPM wishes to understand how this population may be changing. This month, we track the pretrial population by bond amount categories, using July 1 population snapshots provided by the DOC. We color-coded bond categories by percentage change between 2017 and 2021, varying intensities of red the larger the positive change, and declines by shades of blue. The resulting heat map highlights growth and declines in the different bond amount categories.

Two notable trends emerge: First, declines in bond amounts below \$100,000. We observe the steepest decline in bond amounts less than \$20,000, suggesting that the 2019 rule change allowing people to post 10%

cash on any bond under \$20,000 may have contributed to reducing this population. Second, we observe increases in bonds set at \$100,000 or more. While many factors influence the setting of bond amounts, high bond amounts may indicate more serious pending cases. The chart suggests that people with such cases may comprise a larger share of the 2021 DOC pretrial population.

The 2020 onset of COVID-19 impeding cases involving jury trials may be a factor. COVID delays to disposing such cases, typically associated with high bond amounts, resulted in longer pending periods. With court innovations to overcome COVID impacts and resume jury trials, OPM anticipates this high bond population may recede in 2022.

Table 2 - First-of-Month Totals

	2021	2021	2021	2020	% Change	
	Oct. 1	Nov. 1	Dec. 1	Dec. 1	Monthly	Annual
DOC Facilities						
Federal/Other	106	95	108	139	13.7%	-22.3%
Sentenced	5,416	5,452	5,420	5,997	-0.6%	-9.6%
Special Parole	368	355	338	357	-4.8%	-5.3%
Pretrial	3,465	3,529	3,652	2,747	3.5%	32.9%
Total	9,355	9,431	9,518	9,240	0.9%	3.0%
DOC Community						
Transfer Parole	57	55	55	203	0.0%	-72.9%
Parole/ Parcom Total	878	851	822	946	-3.4%	-13.1%
Parole	707	686	662	763	-3.5%	-13.2%
Parcom @ CT	171	165	160	183	-3.0%	-12.6%
Furlough	14	22	22	38	0.0%	-42.1%
Trans Placement	60	57	56	75	-1.8%	-25.3%
DUI/Home confine.	45	54	53	30	-1.9%	76.7%
Halfway House Total	743	746	804	840	7.8%	-4.3%
Comm Release	362	342	344	417	0.6%	-17.5%
TS	6	11	10	20	-9.1%	-50.0%
Parole	136	132	154	105	16.7%	46.7%
Transfer Parole	10	14	20	32	42.9%	-37.5%
Special Parole	229	247	276	266	11.7%	3.8%
TS	124	110	121	342	10.0%	-64.6%
Nursing home	0	0	0	0	-	-
Special Parole	1,426	1,401	1,356	2,036	-3.2%	-33.4%
Total	3,347	3,296	3,289	4,510	-0.2%	-27.1%

Table 2a - Monthly Admissions, Releases, & Discharges

	2021	2021	2021	2020	% Change	
	SEP	OCT	NOV	NOV	Monthly	Annual
Admissions						
Federal/Other	44	39	22	29	-43.6%	-24.1%
Remands	102	87	101	119	16.1%	-15.1%
DUI	2	0	2	6	-	-66.7%
Transfer Parole	0	1	1	3	0.0%	-66.7%
Parole	13	16	19	21	18.8%	-9.5%
Trans Plac/Furlough	1	0	0	2	-	-100.0%
HWH	24	27	23	15	-14.8%	53.3%
TS	5	1	4	13	300.0%	-69.2%
Special Parole	57	42	52	59	23.8%	-11.9%
New Sentence	128	122	136	36	11.5%	277.8%
VOP	39	25	27	7	8.0%	285.7%
Pretrial	906	912	993	637	8.9%	55.9%
Total	1,180	1,160	1,252	821	7.9%	52.5%
Releases and discharges						
Transfer Parole	18	16	20	29	25.0%	-31.0%
Parole	55	61	62	65	1.6%	-4.6%
Furlough	13	15	13	19	-13.3%	-31.6%
Trans. Placement	19	10	15	18	50.0%	-16.7%
Home Confinement DUI	12	16	19	3	18.8%	533.3%
HWH	62	53	79	55	49.1%	43.6%
TS	38	26	52	44	100.0%	18.2%
Special Parole	79	90	82	70	-8.9%	17.1%
Nursing home	0	0	1	0	-	-
End of Sentence	299	305	315	349	3.3%	-9.7%
Total	595	592	658	652	11.1%	0.9%
Pretrial Releases*						
From Court	243	252	247	114	-2.0%	116.7%
Release to Bond	342	320	348	316	8.8%	10.1%

* Totals reflect events, not individual offenders

DOC - Community Release Unit (CRU)

Table 3 - Case reviews and release metrics

	Cases				Approval Rate
	Reviewed	Approved	Denied	Continued	
SEP	302	137	35	47	45%
OCT	301	137	38	54	46%
NOV 21	315	152	42	55	48%
NOV 20	223	110	43	25	49%

Note: Figures published here are based on the operational data available at the time of publication. Data in subsequent issues may not agree.

Board of Pardons and Paroles

Table 4 - Parole hearings, new cases

	Parole Hearings	Paroles granted	Grant rate	Granted: Prior Year	Granted: Two Years Prior
SEP	74	52	70%	102	66
OCT	80	49	61%	78	72
NOV	76	47	62%	36	67

Table 4a - Other BOPP actions

	Reparole from revocation	Reparole from rescission	Closed interest cases	Special parole cases	Transfer parole cases
SEP	12	0	12	12	18
OCT	30	0	14	18	19
NOV 2021	50	1	25	20	16
NOV 2020	15	1	8	11	14

The Pretrial Population

Table 5 - Bond ranges for pretrial detainees

Bond amount	Oct. 1, 2021	Nov. 1, 2021	Dec. 1, 2021	Dec. 1, 2020
Less than \$20K	379	374	420	354
\$20K to <\$50K	450	432	467	368
\$50K to <\$100K	588	584	593	451
\$100K or higher	2,271	2,331	2,390	1,772
Persons w/bonds	3,688	3,721	3,870	2,945
Over \$1M	391	398	414	279

Table 5a - Pretrial, weeks since admission

Weeks since last DOC admit	Oct. 1, 2021	Nov. 1, 2021	Dec. 1, 2021	Dec. 1, 2020
< 1 week	290	317	289	181
1 to < 3 weeks	263	258	256	157
3 to < 10 weeks	644	658	760	535
10 to < 30 weeks	1,004	1,020	1,067	720
30 wks or more	1,490	1,471	1,511	1,353
Pretrial prisoners	3,691	3,724	3,883	2,946

Table 5b - Pretrial admits, new offenders

	SEP 2021	OCT 2021	NOV 2021	NOV 2020
Arraignments	2,115	2,029	2,141	1,490
Pretrial Admits	906	912	993	637
New to DOC	234	239	256	149
% New	26%	26%	26%	23%

Court Support Services Division

Table 6 - The jail reinterview program

	Pretrial admissions	Offender interviews	Offenders released	Released last year
SEP	906	860	245	156
OCT	912	812	238	148
NOV	993	850	200	180

Table 6a - Pretrial bail and probation caseloads

	Pretrial Case Starts	Client Supv. Starts	Split Sentence Starts	Pretrial bail cases
SEP	2,050*	1,554	219	12,665*
OCT	2,050*	1,646	197	12,665*
NOV	2,050*	1,688	213	12,665*
NOV '20	2,050*	696	198	12,665*

* CSSD estimates

Chart 3 – Prison Population

First week of the month, avg. daily count (ADC)

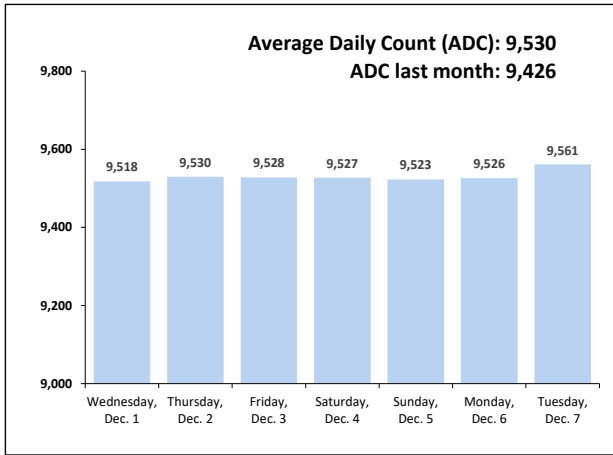


Chart 6 – Monthly DOC Admissions

November 2020 through November 2021

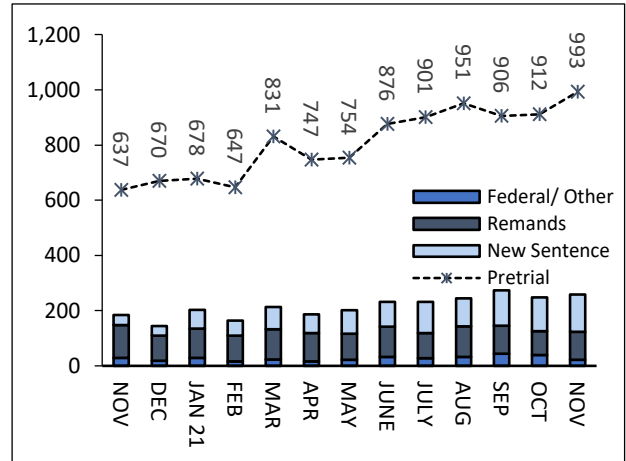


Chart 4 – Prison Population, First-of-Month

2018, 2019, 2020, and 2021

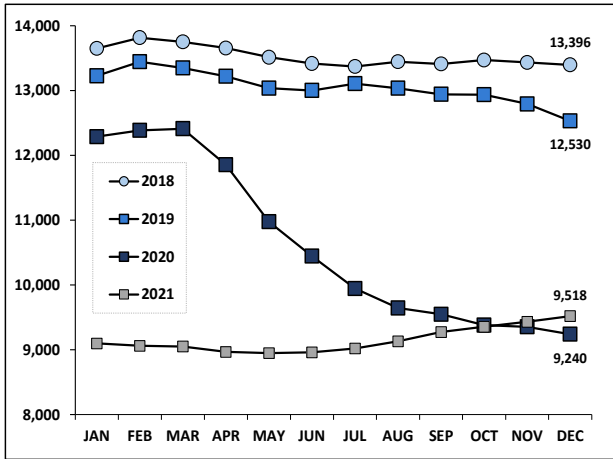


Chart 7– Remands From Community Release

November 2021

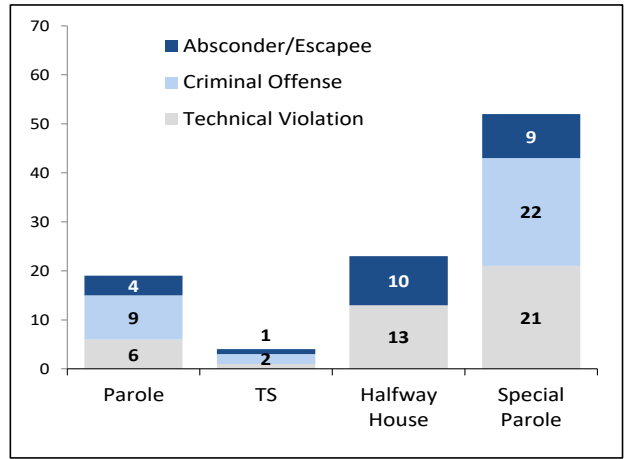


Chart 5 – Statewide Arrests

2020 and 2021

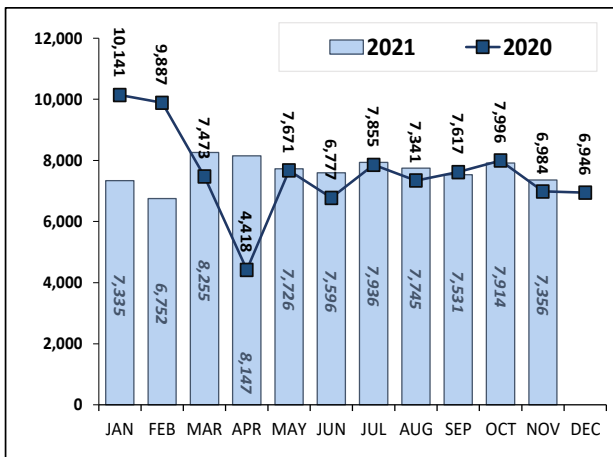
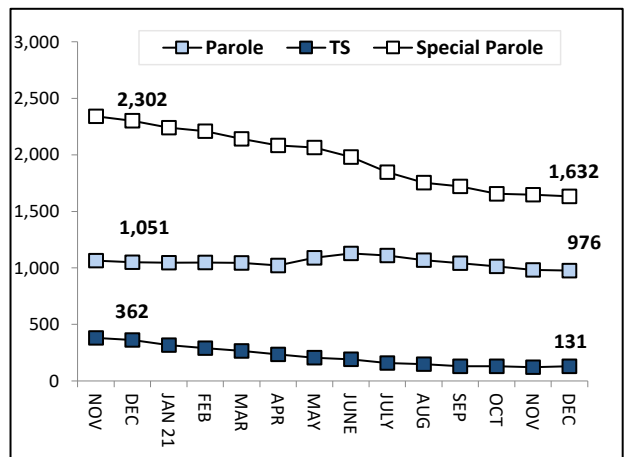


Chart 8 – DOC Community Supervision

Nov. 1, 2020 through Dec. 1, 2021



Note: Data for all charts, except for Chart 5, was supplied by CT DOC. Data for Chart 5 are for new case starts in the state Criminal Motor Vehicle System (CRMVS). Chart 8 includes offenders in halfway houses.