

OPM - Criminal Justice Policy & Planning Division

Monthly Indicators Report

Highlights

- Over the last four months, Connecticut's correction population has steadily grown. (See Chart 4.) Between the first of August and September, the number of people in jails and prisons increased 1.5% (from 9,131 to 9,272 people). Despite the recent increase, the current first-of-the-month population is 2.9% lower than one year prior. (See Table 2.)
- Correction admissions increased 5.6% between July and August (from 1,133 to 1,196 people). August's admissions are 67.5% higher than one year prior (714 people admitted), despite similar arrest volumes within those months. (see Chart 5.)
- Probation supervision starts rose 13.9% between July and August (from 1,239 to 1,411 people). Probation starts are up 240.8% compared to August 2020 (414 starts), when starts neared all-time lows following the COVID-19 pandemic's onset. (See Table 6a.)
- This month we introduce *Spotlight!* The "Chart 2a" section has been retitled the "Spotlight" section. As the new title implies, this section will build upon Chart 2a's legacy of monthly special-topic analyses highlighting notable indicators, patterns, trends, and other observations regarding the criminal justice system in Connecticut.

Correction Population Forecast

As summer 2021 nears an end, OPM's correction population forecast continues to diverge from the actual number of people in Connecticut jails and prisons. OPM estimated 426 fewer individuals held at the start of September than compared to the average daily count for the first week (see Table 1). The average daily count's percent difference from OPM's forecast reached 4.8% in September, up from 3.1% in August.

The growth of the pretrial population continued into September, contributing to the correction population's divergence from OPM's forecast. On the first of September, 3,456 people were held pretrial, up 4.2% from the first of August. We observed slight increases in August for both pretrial admissions and releases compared to July, though as noted in last month's report, releases from court remain far below pre-pandemic levels.

OPM will continue to closely monitor the pretrial population for shifts. It is too early to say what proportion of the individuals held pretrial may serve shorter or longer periods of incarceration following the case disposition. As of September, we have not yet observed a significant impact on the sentenced population, which remains steady (less than 1% change from August 1). Whether the sentenced population begins to grow, pretrial releases increase, or probation starts rise, OPM will watch these key indicators intently to gauge upcoming population impacts.

TABLE 1 – Correction Population Forecast

	Avg. Daily OPM 2021	Inmate	
	Count	Forecast	difference
JAN '21	9,106	-	-
FEB	9,044	9,044	-
MAR	9,048	9,020	-28
APR	8,931	8,999	68
MAY	8,955	8,957	2
JUN	8,965	8,914	-51
JUL	9,009	8,890	-119
AUG	9,143	8,869	-274
SEP	9,253	8,827	-426
OCT		8,890	-
NOV		8,908	-
DEC		8,924	-
JAN '22		8,864	-
FEB		8,986	-

Avg. Daily Count (ADC) for 1st week of month

Chart 1 – Actual Correction Population Against the OPM Forecasts
January 1, 2020 through February 1, 2022

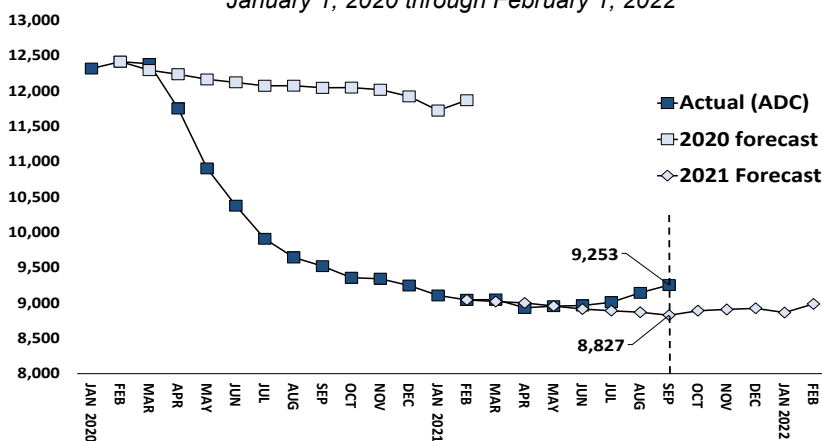


Chart 2 - Criminal Justice, Monthly Counts and Flows

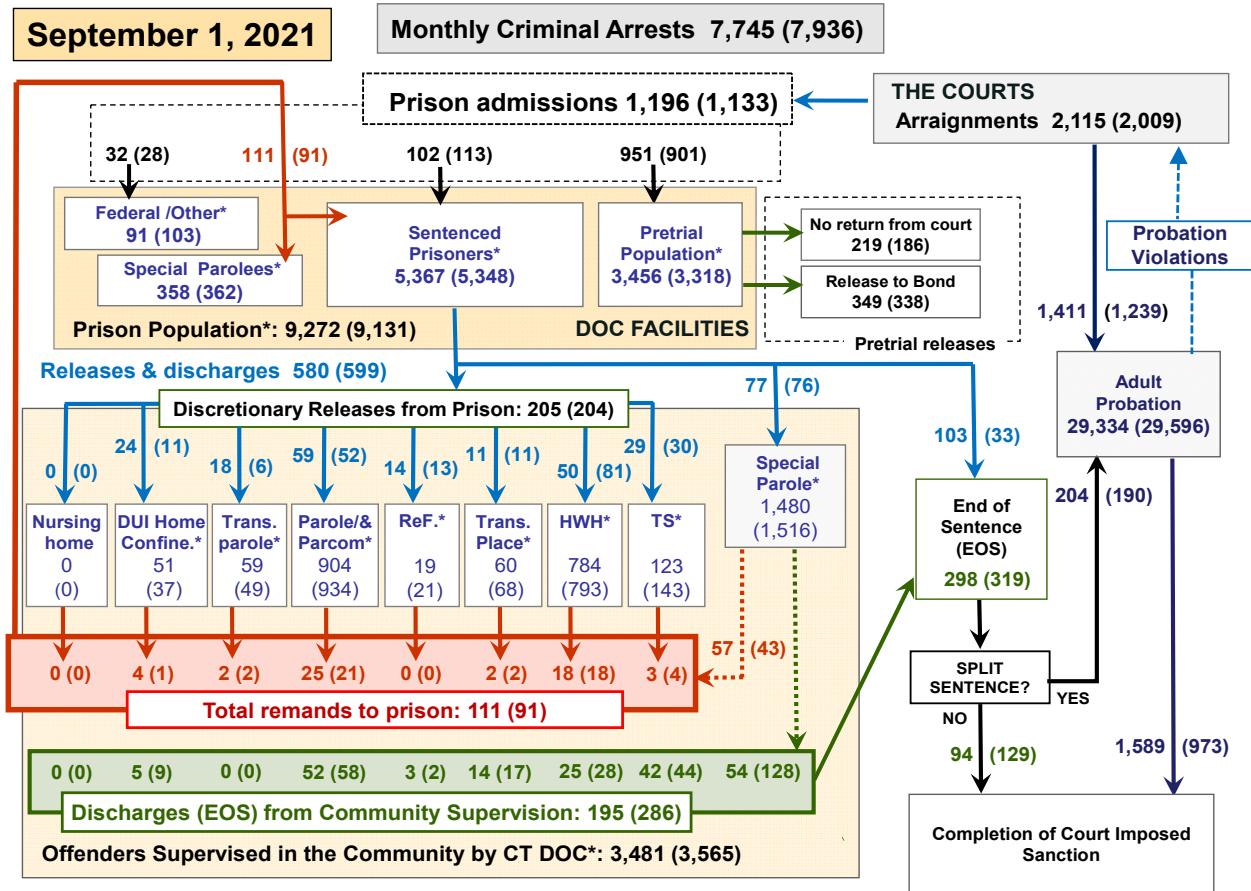
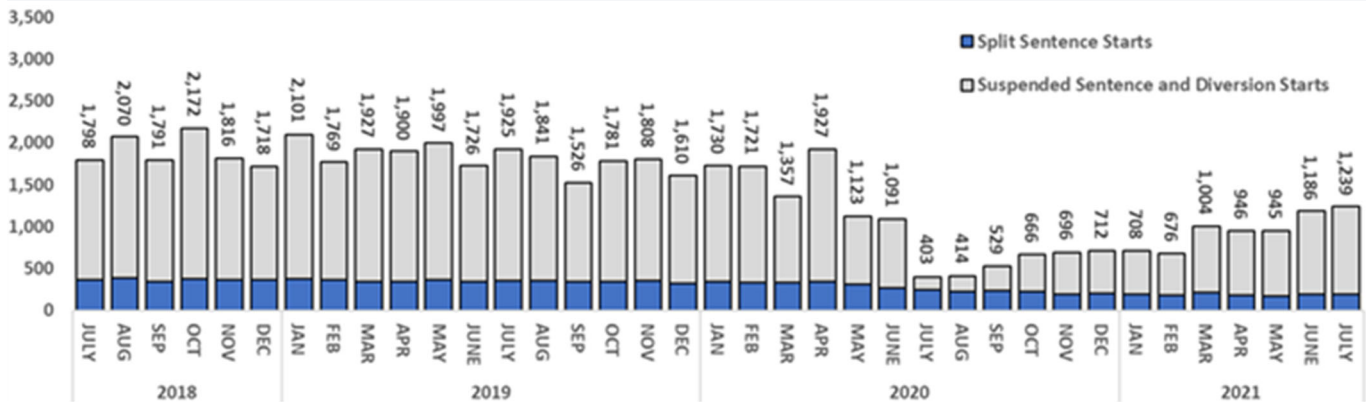


Chart 2 contains monthly operations data for August 2021 and daily counts reported on September 1, 2021. Asterisks (*) indicate the daily count on September 1st. Figures for last month are enclosed by parentheses. Sources: Arrests – CRMVS, via CJIS, Court and probation data - CSSD, all other data - CT DOC.

Spotlight: A Closer Look at Probation Starts Over Time



The chart above tracks probation starts over time, divided into two groupings: (1) split sentence starts and (2) suspended sentence and diversion starts. Under a split sentence, the person serves a probation term following a sentenced period of incarceration. Suspended sentence and diversion starts, on the other hand, are court ordered probation periods in lieu of an incarceration sentence.

The chart illustrates distinctly different trends involving these two groupings of probation starts from July 2018 to 2021. Split sentence starts, shown in blue, remain relatively constant over the three-year period, even after the onset of the pandemic in early 2020. As individuals

receive split sentences long before the actual probation period begins, split sentence starts take longer as an indicator to reflect changing dynamics in court case flows.

Meanwhile, suspended sentence and diversionary probation both begin near case disposition and more closely mirror operational trends in courts. The summer 2020 decline in these starts signifies the pandemic's considerable impact on the criminal justice system. We anticipate these starts may climb back toward pre-pandemic levels by 2022, as courts continue to resolve cases accumulated in the wake of the pandemic.

Table 2 - First-of-Month Totals

	2021	2021	2021	2020	% Change	
	July 1	Aug. 1	Sep. 1	Sep. 1	Monthly	Annual
DOC Facilities						
Federal/Other	111	103	91	124	-11.7%	-26.6%
Sentenced	5,361	5,348	5,367	6,532	0.4%	-17.8%
Special Parole	362	362	358	308	-1.1%	16.2%
Pretrial	3,186	3,318	3,456	2,584	4.2%	33.7%
Total	9,020	9,131	9,272	9,548	1.5%	-2.9%
DOC Community						
Transfer Parole	65	49	59	178	20.4%	-66.9%
Parole/ Parcom Total	977	934	904	949	-3.2%	-4.7%
Parole	798	756	723	781	-4.4%	-7.4%
Parcom @ CT	179	178	181	168	1.7%	7.7%
Furlough	27	21	19	68	-9.5%	-72.1%
Trans Placement	78	68	60	81	-11.8%	-25.9%
DUI/Home confine.	36	37	51	54	37.8%	-5.6%
Halfway House Total	771	793	784	838	-1.1%	-6.4%
Comm Release	399	407	390	400	-4.2%	-2.5%
TS	3	5	8	24	60.0%	-66.7%
Parole	134	135	138	123	2.2%	12.2%
Transfer Parole	7	7	7	26	0.0%	-73.1%
Special Parole	228	239	241	265	0.8%	-9.1%
TS	157	143	123	454	-14.0%	-72.9%
Nursing home	0	0	0	5	-	-100.0%
Special Parole	1,619	1,516	1,480	2,144	-2.4%	-31.0%
Total	3,730	3,565	3,481	4,771	-2.4%	-27.0%

Table 2a - Monthly Admissions, Releases & Discharges

	2021	2021	2021	2020	% Change	
	JUNE	JULY	AUG	AUG	Monthly	Annual
Admissions						
Federal/Other	32	28	32	18	14.3%	77.8%
Remands	110	91	111	96	22.0%	15.6%
DUI	1	1	4	0	300.0%	-
Transfer Parole	1	2	2	0	0.0%	-
Parole	15	21	25	20	19.0%	25.0%
Trans Plac/Furlough	4	2	2	1	0.0%	100.0%
HWH	21	18	18	24	0.0%	-25.0%
TS	8	4	3	8	-25.0%	-62.5%
Special Parole	60	43	57	42	32.6%	35.7%
New Sentence	90	113	102	15	-9.7%	580.0%
VOP	22	23	25	2	8.7%	1150.0%
Pretrial	876	901	951	585	5.5%	62.6%
Total	1,108	1,133	1,196	714	5.6%	67.5%
Releases and discharges						
Transfer Parole	6	6	18	20	200.0%	-10.0%
Parole	69	52	59	51	13.5%	15.7%
Furlough	22	13	14	24	7.7%	-41.7%
Trans. Placement	17	11	11	14	0.0%	-21.4%
Home Confinement DUI	15	11	24	1	118.2%	2300.0%
HWH	92	81	50	71	-38.3%	-29.6%
TS	24	30	29	51	-3.3%	-43.1%
Special Parole	62	76	77	87	1.3%	-11.5%
Nursing home	1	0	0	0	-	-
End of Sentence	304	319	298	360	-6.6%	-17.2%
Total	612	599	580	679	-3.2%	-14.6%
Pretrial Releases*						
From Court	188	186	219	58	17.7%	277.6%
Release to Bond	338	338	349	279	3.3%	25.1%

* Totals reflect events, not individual offenders

DOC - Community Release Unit (CRU)

Table 3 - Case reviews and release metrics

	Cases				Approval Rate
	Reviewed	Approved	Denied	Continued	
JUNE	289	133	45	40	46%
JULY	285	124	39	37	44%
AUG 21	304	134	46	43	44%
AUG 20	327	148	58	39	45%

Note: Figures published here are based on the operational data available at the time of publication. Data in subsequent issues may not agree.

Board of Pardons and Paroles

Table 4 - Parole hearings, new cases

	Parole Hearings	Paroles granted	Grant rate	Granted: Prior Year	Granted: Two Years Prior
JUNE	91	59	65%	77	74
JULY	91	64	70%	79	62
AUG	81	57	70%	68	68

Table 4a - Other BOPP actions

	Reparole from revocation	Reparole from rescission	Closed interest cases	Special parole cases	Transfer parole cases
JUNE	25	0	13	18	15
JULY	6	1	12	9	25
AUG 2021	23	1	10	8	17
AUG 2020	18	1	14	9	34

The Pretrial Population

Table 5 - Bond ranges for pretrial detainees

Bond amount	July 1, 2021	Aug. 1, 2021	Sep. 1, 2021	Sep. 1, 2020
Less than \$20K	346	364	398	312
\$20K to <\$50K	421	439	423	321
\$50K to <\$100K	504	543	571	441
\$100K or higher	2,151	2,203	2,237	1,687
Persons w/bonds	3,422	3,549	3,629	2,765
Over \$1M	349	373	383	258

Table 5a - Pretrial, weeks since admission

Weeks since last DOC admit	July 1, 2021	Aug. 1, 2021	Sep. 1, 2021	Sep. 1, 2020
< 1 week	242	300	221	201
1 to < 3 weeks	212	236	246	153
3 to < 10 weeks	599	611	700	391
10 to < 30 weeks	892	938	989	676
30 wks or more	1,486	1,466	1,484	1,344
Pretrial prisoners	3,431	3,551	3,640	2,765

Table 5b - Pretrial admits, new offenders

	JUNE 2021	JULY 2021	AUG 2021	AUG 2020
Arraignments	1,980	2,009	2,115	1,396
Pretrial Admits	876	901	951	585
New to DOC	209	214	217	137
% New	24%	24%	23%	23%

Court Support Services Division

Table 6 - The jail reinterview program

	Pretrial admissions	Offender interviews	Offenders released	Released last year
JUNE	876	809	192	165
JULY	901	776	213	184
AUG	951	795	180	139

Table 6a - Pretrial bail and probation caseloads

	Pretrial Bail Case Starts	Client Supv. Starts	Split Sentence Starts	Pretrial bail cases
JUNE	2,050*	1,186	188	12,665*
JULY	2,050*	1,239	190	12,665*
AUG	2,050*	1,411	204	12,665*
AUG '20	2,050*	414	229	12,665*

* CSSD estimates

Chart 3 – Prison Population

First week of the month, avg. daily count (ADC)

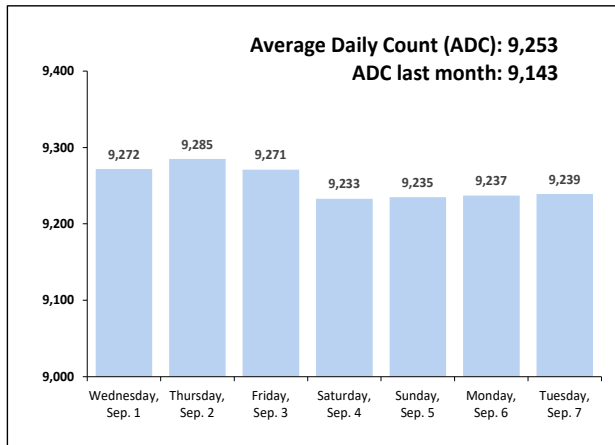


Chart 6 – Monthly DOC Admissions

August 2020 through August 2021

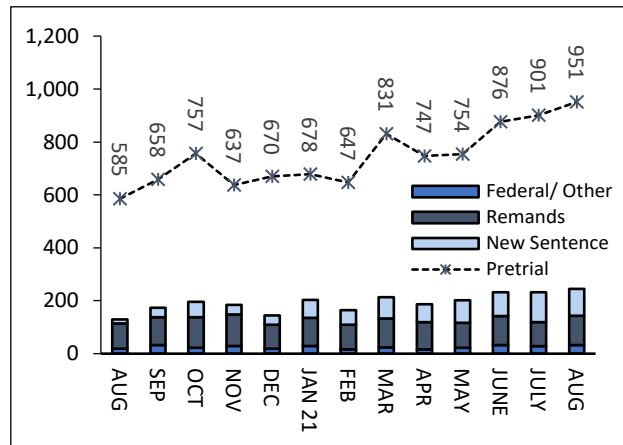


Chart 4 – Prison Population, First-of-Month

2018, 2019, 2020 and 2021

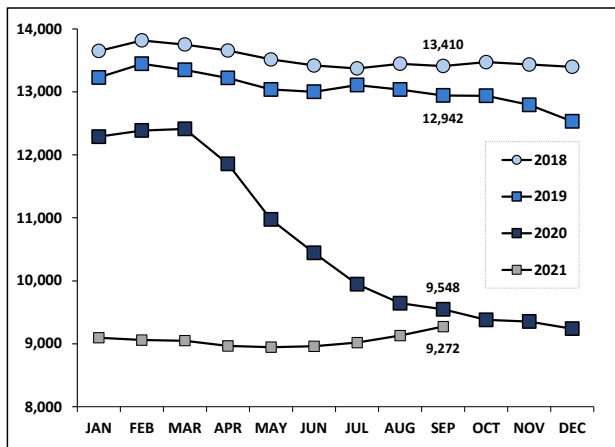


Chart 7– Remands From Community Release

August 2021

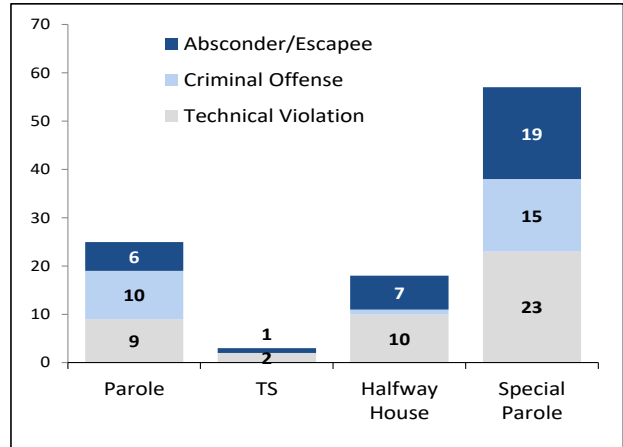


Chart 5 – Statewide Arrests

2020 and 2021

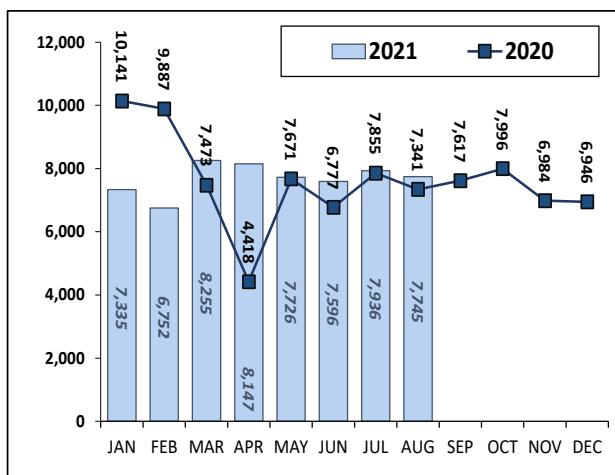
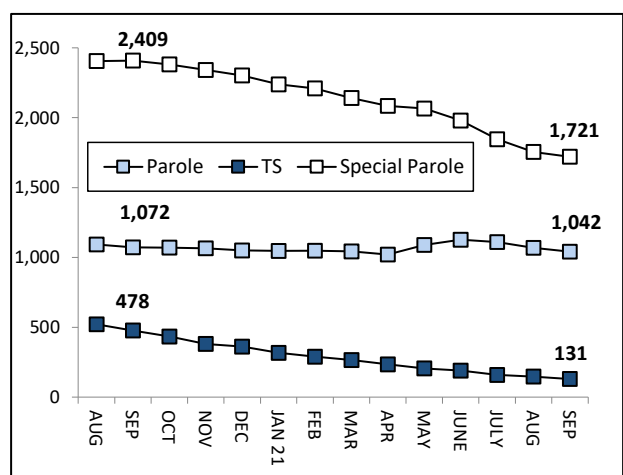


Chart 8 – DOC Community Supervision

Aug. 1, 2020 through Sep. 1, 2021



Note: Data for all charts, except for Chart 5, was supplied by CT DOC. Data for Chart 5 are for new case starts in the state Criminal Motor Vehicle System (CRMVS). Chart 8 includes offenders in halfway houses.