

OPM - Criminal Justice Policy & Planning Division

Monthly Indicators Report

Highlights

- Connecticut's prison and jail population surpassed nine thousand individuals on July 1st, a 60-person increase compared to the prior month. This slight increase in June pales in comparison to the 9.3% decrease since July 2020.
- Admissions to DOC pretrial detention has, on a whole, grown steadily since April 2020 (see Chart 6 on page 4). (In April 2020, following the onset of the COVID-19 pandemic, pretrial admissions fell to 300). This rise has allowed for a minor net growth of the correctional population as smaller declines among the sentenced group no longer offset any increases in the pretrial population. Such a trend in the pretrial population suggests a gradual return to normalcy of front-end criminal justice processes, albeit with temporary fluctuations. In short, this might suggest that a point of inflection may have already passed.
- The special parole population has been in a relatively slow but steady decline, resulting in a 23% decrease since July 2020 (refer to Chart 8). These reductions are not thought to be pandemic-related. This form of supervision is generally reserved for individuals with longer sentences. Therefore, such sentencing decisions were likely determined prior to the onset of COVID-19 and, thus, may be more of a reflection of changes in sentencing discretion and the accelerated discharges of special parolees with sustained records of successful reintegration, rather than short term operational adjustments brought on by the pandemic.

Prison Population Forecast

As the calendar turns to July, OPM's forecast underestimates the size of the prison population, by a modest 119 inmates. Translated into percentage terms, the forecast is off by 1.2%. Given the volatility of 2020, a 1% variance five months into the forecast cycle is an encouraging sign that the forecast is on track. While being close is important, anticipating how the population will move is more valuable for operational concerns. Importantly, recent fluctuations hint that the population is expanding earlier than OPM's forecast predicted.

OPM's forecast anticipated the prison population to stabilize through September, when admissions would begin to outpace releases, gradually driving up the population. With the unprecedented nature of COVID-19, predicting the timing of the ebbs and flows is challenging if not entirely impossible. We considered several scenarios, particularly regarding when admissions would be expected to grow. One possibility included a detailed analysis published in February, which projected an earlier uptick in admissions, causing the population to begin a gradual ascent in June, which is happening now, instead of September.

TABLE 1 – Prison Population Forecast

	Avg. Daily OPM 2021	Inmate
	Count	Forecast
JAN '21	9,106	-
FEB	9,044	9,044
MAR	9,048	9,020
APR	8,931	8,999
MAY	8,955	8,957
JUN	8,965	8,914
JUL	9,009	8,890
AUG		8,869
SEP		8,827
OCT		8,890
NOV		8,908
DEC		8,924
JAN '22		8,864
FEB		8,986

Avg. Daily Count (ADC) for 1st week of month

The correction system is not immune to the unpredictable nature of current times.

Chart 1 – Actual prison population against the OPM forecasts

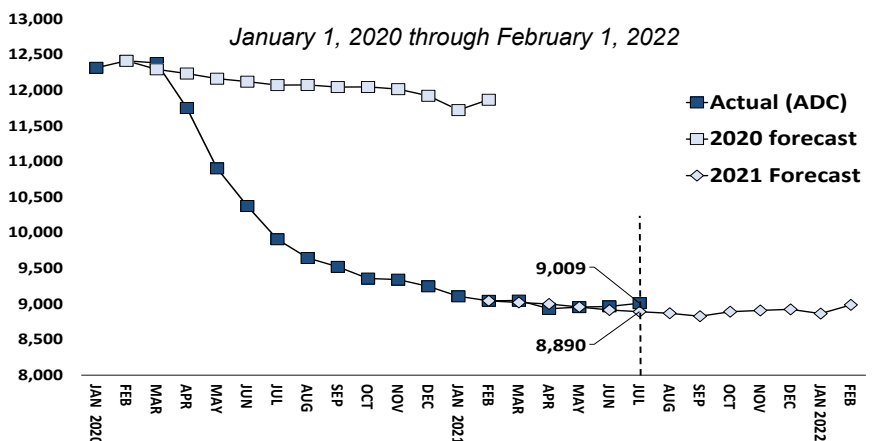


Chart 2 - Criminal justice, monthly counts and flows

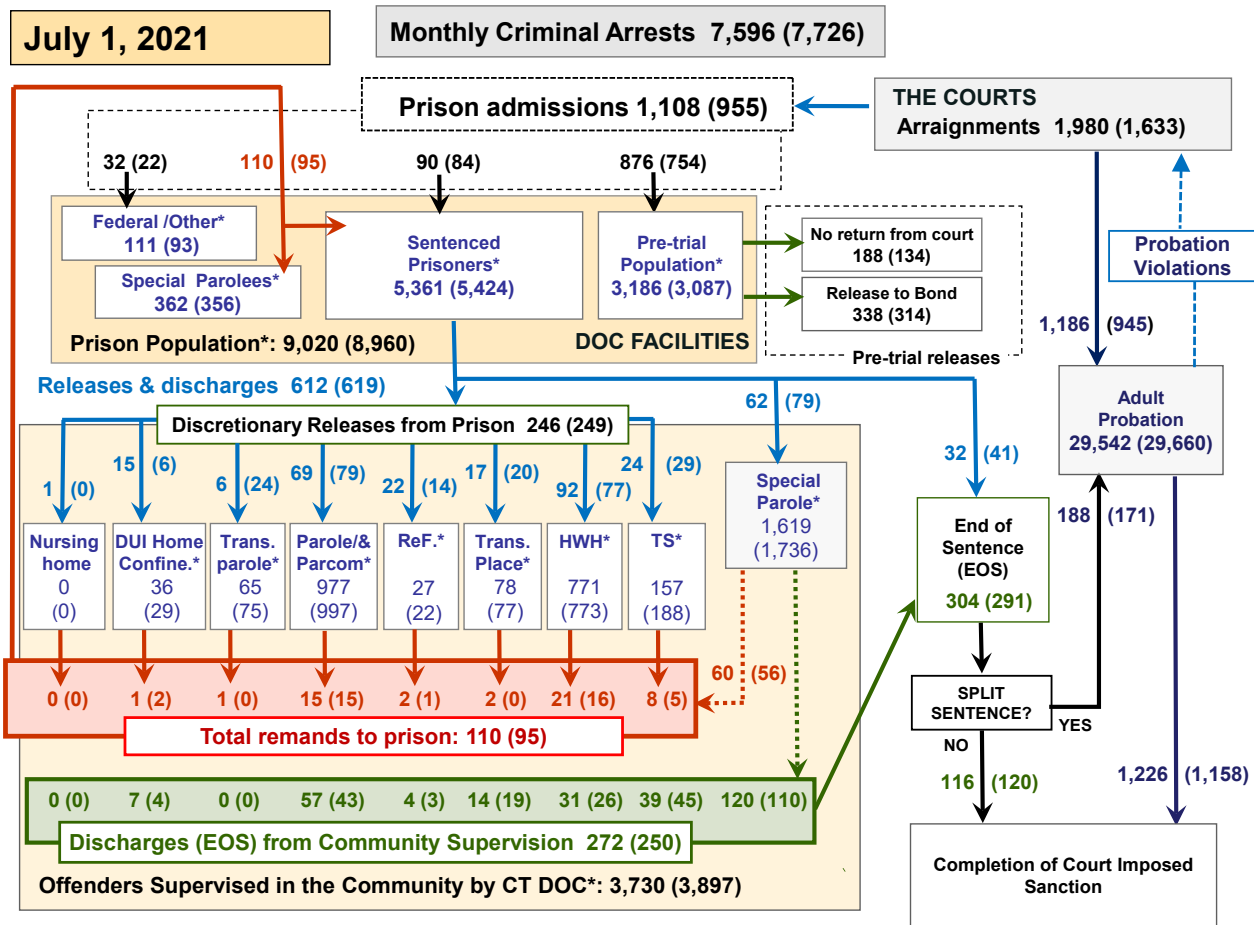
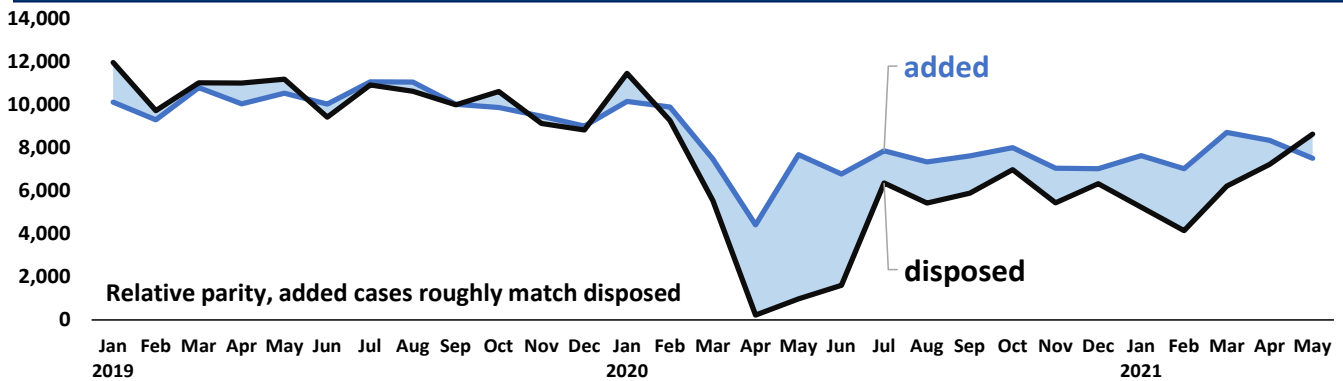


Chart 2 contains monthly operations data for June 2021 and daily counts reported on July 1, 2021. Asterisks (*) indicate the daily count on July 1st. Figures for last month are enclosed by parentheses. Sources: Arrests – CRMVS, via CJIS, Court and probation data - CSSD, all other data - CT DOC.

Chart 2a – Criminal cases added vs disposed



In a typical month, roughly the same number of cases are added and disposed in Connecticut's criminal courts. The early months in the chart above are indicative of "normal" operations. The two lines, which depict cases added and disposed each month, fall on top of each other.

Starting in March 2020 the lines change course sharply as Connecticut's criminal courts were severely disrupted by the COVID-19 pandemic. The status-quo equilibrium ended abruptly, with dispositions falling more sharply than added cases. Understanding the processes behind these figures helps to illustrate why the discrepancy occurred.

Dispositions are typically reached in public hearings in open court, which involves close social contact, a practice that has proved challenging with respect to public-health guidance during the pandemic. Despite the difficulties, court officers adapted procedures to restart business, otherwise the disposed count would not rise from the bottom of the chart. By July 2020 disposed cases differed from added cases by about 20%, a considerable improvement from 95% in April. By May 2021, disposed cases once again balanced added cases. While these adaptations are impressive, work remains needed to address the growth in pending cases reflected in the blue-shaded area between the lines.

Table 2 - First-of-month totals

	2021	2021	2021	2020	% Change	
	May 1	June 1	July 1	July 1	Monthly	Annual
DOC Facilities						
Federal/Other	98	93	111	124	19.4%	-10.5%
Sentenced	5,491	5,424	5,361	6,870	-1.2%	-22.0%
Special Parole	355	356	362	312	1.7%	16.0%
Pre-trial	3,004	3,087	3,186	2,640	3.2%	20.7%
Total	8,948	8,960	9,020	9,946	0.7%	-9.3%
DOC Community						
Transfer Parole	108	75	65	167	-13.3%	-61.1%
Parole/ Parcom Total	961	997	977	953	-2.0%	2.5%
Parole	779	823	798	788	-3.0%	1.3%
Parcom @ CT	182	174	179	165	2.9%	8.5%
Furlough	27	22	27	102	22.7%	-73.5%
Trans Placement	77	77	78	96	1.3%	-18.8%
DUI/Home confine.	29	29	36	81	24.1%	-55.6%
Halfway House Total	780	773	771	864	-0.3%	-10.8%
Comm Release	375	377	399	430	5.8%	-7.2%
TS	5	3	3	23	0.0%	-87.0%
Parole	128	131	134	135	2.3%	-0.7%
Transfer Parole	19	18	7	26	-61.1%	-73.1%
Special Parole	253	244	228	250	-6.6%	-8.8%
TS	201	188	157	541	-16.5%	-71.0%
Nursing home	1	0	0	4	-	-100.0%
Special Parole	1,813	1,736	1,619	2,150	-6.7%	-24.7%
Total	3,997	3,897	3,730	4,958	-4.3%	-24.8%

Table 2a - Monthly admissions, releases & discharges

	2021	2021	2021	2020	% Change	
	APR	MAY	JUNE	JUNE	Monthly	Annual
Admissions						
Federal/Other	16	22	32	17	45.5%	88.2%
Remands	103	95	110	83	15.8%	32.5%
DUI	2	2	1	0	-50.0%	-
Transfer Parole	2	0	1	0	-	-
Parole	12	15	15	9	0.0%	66.7%
Trans Plac/Furlough	4	1	4	3	300.0%	33.3%
HWH	27	16	21	17	31.3%	23.5%
TS	6	5	8	13	60.0%	-38.5%
Special Parole	50	56	60	36	7.1%	66.7%
New Sentence	67	84	90	6	7.1%	1400.0%
VOP	15	17	22	6	29.4%	266.7%
Pre-trial	747	754	876	475	16.2%	84.4%
Total	933	955	1,108	581	16.0%	90.7%
Releases and discharges						
Transfer Parole	29	24	6	42	-75.0%	-85.7%
Parole	65	79	69	82	-12.7%	-15.9%
Furlough	12	14	22	67	57.1%	-67.2%
Trans. Placement	12	20	17	25	-15.0%	-32.0%
Home Confinement DUI	8	6	15	4	150.0%	275.0%
HWH	70	77	92	135	19.5%	-31.9%
TS	23	29	24	96	-17.2%	-75.0%
Special Parole	65	79	62	77	-21.5%	-19.5%
Nursing home	0	0	1	0	-	-
End of Sentence	268	291	304	440	4.5%	-30.9%
Total	552	619	612	968	-1.1%	-36.8%
Pre-trial Releases*						
From Court	141	134	188	41	40.3%	358.5%
Release to Bond	324	314	338	311	7.6%	8.7%

* Totals reflect events, not individual offenders

DOC - Community Release Unit (CRU)

Table 3 - Case reviews and release metrics

	Cases				Approval Rate
	Reviewed	Approved	Denied	Continued	
APR	230	105	32	30	46%
MAY	232	104	39	25	45%
JUNE 21	289	133	45	40	46%
JUNE 20	342	164	68	36	48%

Note: Figures published here are based on the operational data available at the time of publication. Data in subsequent issues may not agree.

Board of Pardons and Paroles

Table 4 - Parole hearings, new cases

	Parole Hearings	Paroles granted	Grant rate	Granted: Prior Year	Granted: Two Years Prior
APR	103	74	72%	77	67
MAY	94	57	61%	86	78
JUNE	91	59	65%	77	74

Table 4a - Other BOPP actions

	Reparole from revocation	Reparole from rescission	Closed interest cases	Special parole cases	Transfer parole cases
APR	10	2	14	10	27
MAY	11	0	9	23	13
JUNE 2021	25	0	13	18	15
JUNE 2020	13	0	10	15	35

The pre-trial population

Table 5 - Bond ranges for pre-trial detainees

Bond amount	May 1, 2021	June 1, 2021	July 1, 2021	July 1, 2020
Less than \$20K	377	366	346	283
\$20K to < \$50K	366	370	421	347
\$50K to < \$100K	504	498	504	459
\$100K or higher	1,998	2,076	2,151	1,708
Persons w/bonds	3,245	3,310	3,422	2,797
Over \$1M	336	348	349	251

Table 5a - Pre-trial, weeks since admission

Weeks since last DOC admit	May 1, 2021	June 1, 2021	July 1, 2021	July 1, 2020
< 1 week	248	226	242	129
1 to < 3 weeks	192	200	212	113
3 to < 10 weeks	569	584	599	334
10 to < 30 weeks	802	849	892	940
30 wks or more	1,439	1,454	1,486	1,292
Pre-trial prisoners	3,250	3,313	3,431	2,808

Table 5b - Pre-trial admits, new offenders

	APR 2021	MAY 2021	JUNE 2021	JUNE 2020
Arraignments	1,692	1,633	1,980	1,038
Pre-trial Admits	747	754	876	475
New to DOC	172	194	209	134
% New	23%	26%	24%	28%

Court Support Services Division

Table 6 - The Jail Reinterview Program

	Pretrial admissions	Offender interviews	Offenders released	Released last year
APR	747	648	166	247
MAY	754	597	174	189
JUNE	876	809	192	165

Table 6a - Pre-trial bail and probation caseloads

	Pretrial Bail Case Starts	Client Supv. Starts	Split Sentence Starts	Pretrial bail cases
APR	2,050*	946	180	12,665*
MAY	2,050*	945	171	12,665*
JUNE	2,050*	1,186	188	12,665*
JUNE '20	2,050*	1,091	272	12,665*

* CSSD estimates

Chart 3 – Prison population

First week of the month, avg. daily count (ADC)

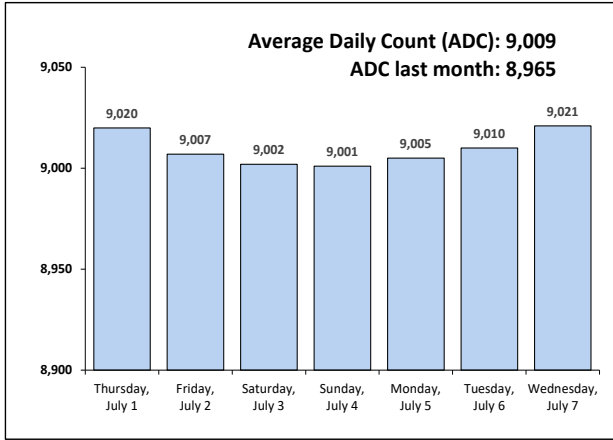


Chart 6 – Monthly DOC Admissions

June 2020 through June 2021

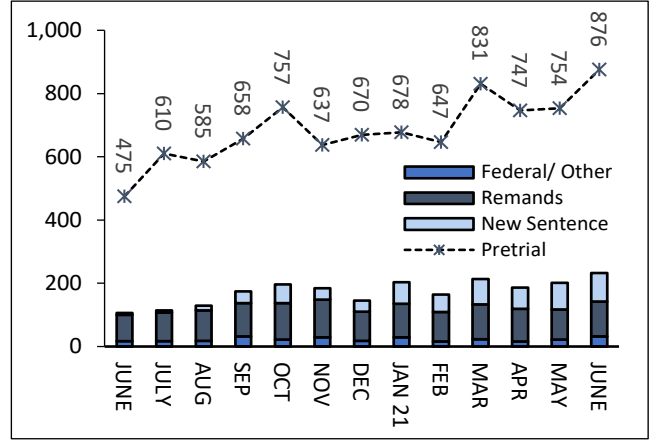


Chart 4 – Prison population, first-of-month

2018, 2019, 2020 and 2021

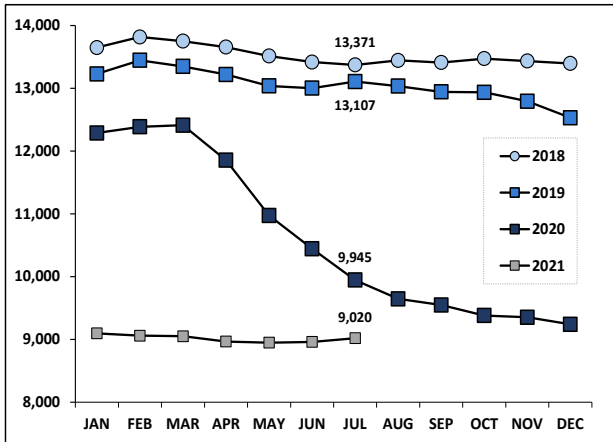


Chart 7– Remands from community release

June 2021

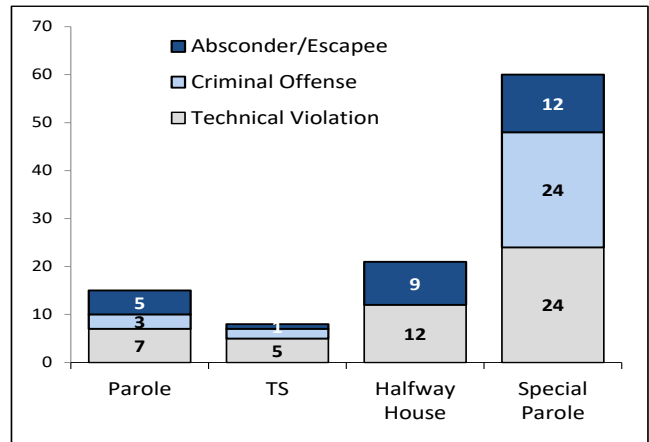


Chart 5 – Statewide Arrests

2020 and 2021

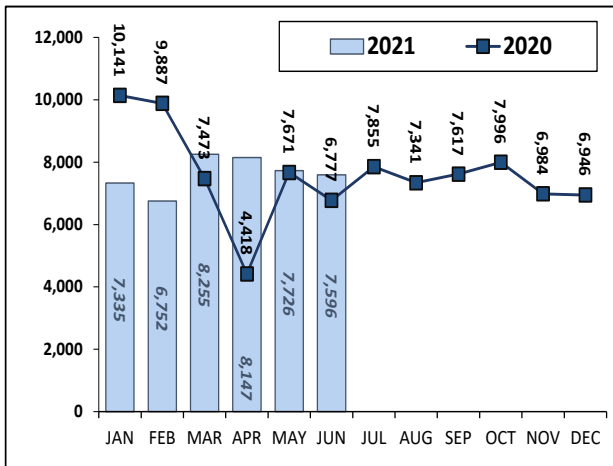
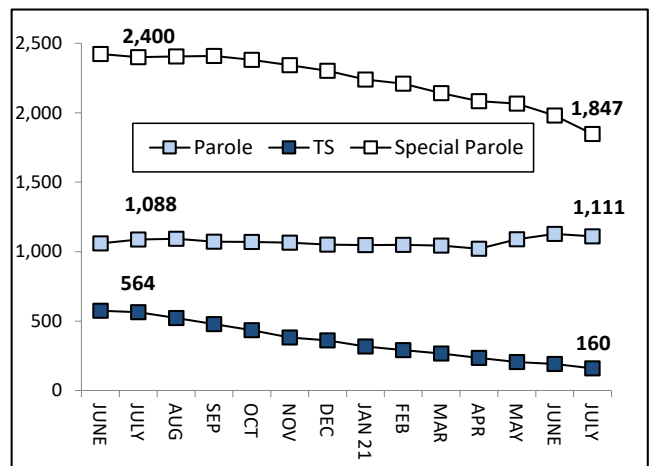


Chart 8 – DOC community supervision

June 1, 2020 through July 1, 2021



Note: Data for all charts, except for Chart 5, was supplied by CT DOC. Data for Chart 5 are for new case starts in the state Criminal Motor Vehicle System (CRMVS). Chart 8 includes offenders in halfway houses.