

OPM - Criminal Justice Policy & Planning Division

Monthly Indicators Report

Highlights

- On December 1st Connecticut's prisons and jails held 9,240 people, 113 fewer than a month ago. The population is down from the December 1, 2019 count, when 12,530 people were incarcerated.
- It is a normal seasonal occurrence that November arraignments and pretrial admissions fall below that year's summer counts. In 2020, however, these counts plummeted in April before gradually rebounding over the following months. With case movement through the criminal justice system continuing its regression to the mean, November showed only a muted reduction from October, and counts remained above the atypical 2020 summer amounts.
- Between September and November, the number of people approved under the Jail Re-interview (JRI) Program grew 15%, from 156 to 180 cases.
- The DOC sentenced population continued its decline, reaching 5,997 as of December 1st. Over the past month, the sentenced population dropped 2.3%, and is down by nearly 34% from December 1st one year ago. Chart 2a this month examines a major factor contributing to this reduction, monthly admissions to the DOC sentenced population.
- Since an April low, the number of individuals starting probation continued to climb through November. In November, 696 people began probation, up slightly from October.

Prison Population Forecast

The criminal justice indicators covered in this report altogether suggest a system gradually returning to a steady state following significant disruption in March and April of 2020. Although 2020 remains a highly irregular year, the late-year seasonal patterns from prior years are beginning to manifest themselves albeit in more muted form. We will continue examining changes in January 2021, when the population decrease typically continues, and February, when there tends to be a bump as system activity picks up.

From 2016 to 2019, total DOC admissions, and pretrial admissions in particular, have dipped an average of 12% from October to November. The impact of the reduced DOC intakes bears out in decreasing average daily counts (ADC) in December and January. As discussed in last month's report, whether 2020 would exhibit similar seasonal trends has been an area of inquiry, especially with October DOC admissions climbing 33% from August, the month of the year in which admissions often peak.

TABLE 1 – Prison Population Forecast

	Avg. Daily Count	OPM 2020 Forecast	Inmate difference
JAN '20	12,315	-	-
FEB	12,413	12,413	-
MAR	12,382	12,293	-89
APR	11,751	12,234	483
MAY	10,903	12,163	1,260
JUN	10,375	12,120	1,745
JUL	9,907	12,072	2,165
AUG	9,644	12,074	2,430
SEP	9,521	12,044	2,523
OCT	9,357	12,046	2,689
NOV	9,342	12,015	2,673
DEC	9,246	11,922	2,676
JAN '21		11,722	-
FEB		11,867	-

Avg. Daily Count (ADC) for 1st week of month

DOC Admissions, increasing in the fall, receded in this month's report, with November's total decrease in line with past years. December's first-week ADC was just 1.03% lower than November's, 9,246 people compared to 9,342 (see Table 1). In 2019, the difference was 1.85%, a decrease from 12,756 to 12,520 people. While the magnitude of the 2020 reduction differs modestly from 2019, December's trends are ultimately suggestive of the typical seasonal pattern.

Chart 1 – Actual prison population against the OPM forecasts

January 1, 2019 through February 1, 2021

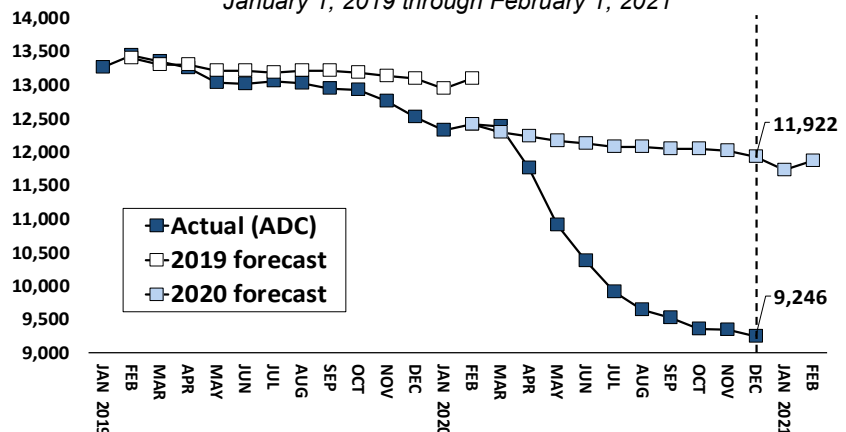


Chart 2 - Criminal justice, monthly counts and flows

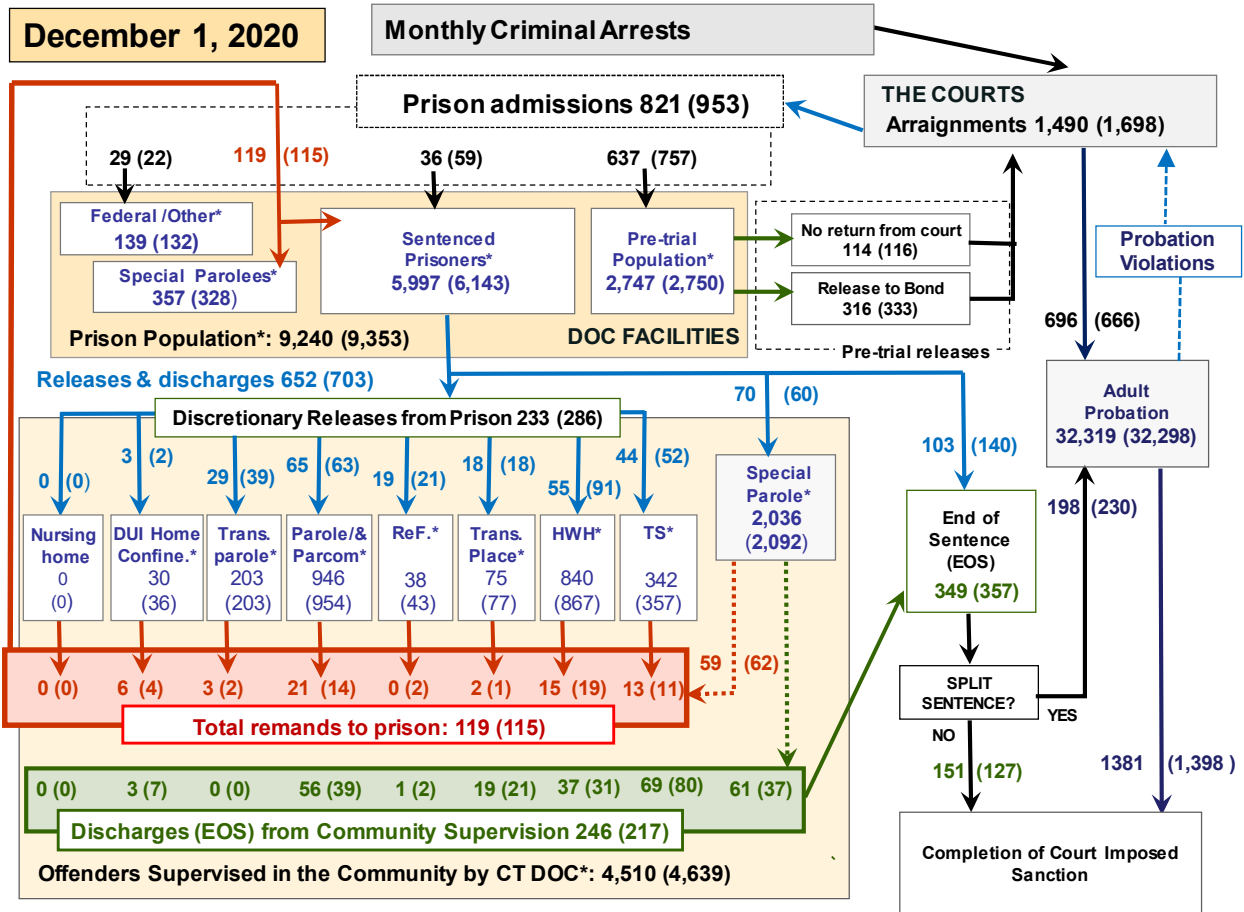
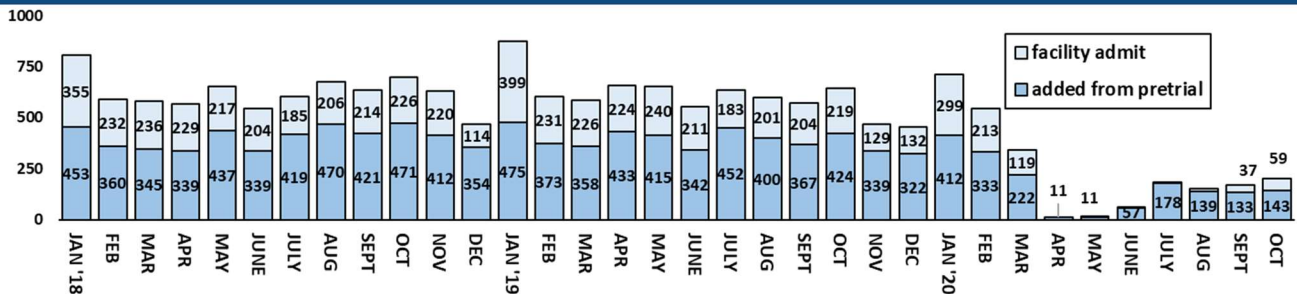


Chart 2 contains monthly operations data for November 2020 and daily counts reported on December 1, 2020. Asterisks (*) indicate the daily count on November 1st. Figures for last month are enclosed by parentheses. Sources: Court and probation data - CSSD, all other data - CT DOC.

Chart 2a – Impact of the COVID-19 pandemic on the DOC sentenced population



The chart above represents the number of people adjudicated and added to the DOC sentenced population each month. The number of pretrial detainees transitioning from an accused to a sentenced status while remaining incarcerated is shown in the darker segments. The lighter section of the column represents people released on bond who were admitted to a DOC facility at the time of sentencing.

Prior to the onset of the COVID-19 pandemic, typically between 400 and 800 people were added to the sentenced population each month through adjudication. April and May 2020 saw that number fall dramatically, to 11, as the courts adapted to the pandemic, triaging hearings and scaling back operations in some areas.

While non-critical business was deferred, essential operations continued, including criminal arraignments of defendants held in lieu of bond and all arraignments involving domestic violence cases.

Sentencing hearings of pretrial detainees resumed in June as courts continued to adapt their operations to the pandemic. Following June's resumption of sentencing hearings, there was a tripling in July in sentenced population intakes, from 57 to 178 people. Since then, a pattern has begun to emerge, of a monthly average of 172 intakes, which is well below pre-pandemic levels. Additionally, admissions of people who are in the community on bond and subsequently sentenced to a period of incarceration remain low compared to pre-pandemic levels.

Table 2 - First-of-month totals

	2020	2020	2020	2019	% Change	
	Oct. 1	Nov. 1	Dec. 1	Dec. 1	Monthly	Annual
DOC Facilities						
Federal/Other	122	132	139	140	5.3%	-0.7%
Sentenced	6,307	6,143	5,997	9,083	-2.4%	-34.0%
Special Parole	316	328	357	336	8.8%	6.3%
Pre-trial	2,636	2,750	2,747	2,971	-0.1%	-7.5%
Total	9,381	9,353	9,240	12,530	-1.2%	-26.3%
DOC Community						
Transfer Parole	195	203	203	53	0.0%	283.0%
Parole/ Parcom Total	955	954	946	951	-0.8%	-0.5%
Parole	780	774	763	792	-1.4%	-3.7%
Parcom @ CT	175	180	183	159	1.7%	15.1%
Furlough	45	43	38	10	-11.6%	280.0%
Trans Placement	80	77	75	46	-2.6%	63.0%
DUI/Home confine.	47	36	30	62	-16.7%	-51.6%
Halfway House Total	869	867	840	1,022	-3.1%	-17.8%
Comm Release	444	452	417	509	-7.7%	-18.1%
TS	23	25	20	28	-20.0%	-28.6%
Parole	116	111	105	130	-5.4%	-19.2%
Transfer Parole	25	29	32	9	10.3%	255.6%
Special Parole	261	250	266	346	6.4%	-23.1%
TS	411	357	342	465	-4.2%	-26.5%
Nursing home	4	0	0	4	-	-100.0%
Special Parole	2,120	2,092	2,036	2,142	-2.7%	-4.9%
Total	4,727	4,639	4,510	4,755	-2.8%	-5.2%

Table 2a - Monthly admissions, releases & discharges

	2020	2020	2020	2019	% Change	
	Sept.	Oct.	Nov.	Nov.	Monthly	Annual
Admissions						
Federal/Other	32	22	29	66	31.8%	-56.1%
Remands	105	115	119	136	3.5%	-12.5%
DUI	7	6	9	2	-	-
Parole	13	14	21	25	50.0%	-16.0%
Trans Plac/Furlough	2	3	2	3	-	-
HWH	20	19	15	27	-21.1%	-44.4%
TS	15	11	13	18	18.2%	-27.8%
Special Parole	48	62	59	61	-4.8%	-3.3%
New Sentence	37	59	36	129	-39.0%	-72.1%
VOP	5	17	7	34	-	-
Pre-trial	658	757	637	1,046	-15.9%	-39.1%
Total	832	953	821	1,377	-13.9%	-40.4%
Releases and discharges						
Transfer Parole	34	39	29	7	-25.6%	314.3%
Parole	56	63	65	62	3.2%	4.8%
Furlough	29	21	19	12	-9.5%	58.3%
Trans. Placement	21	18	18	11	0.0%	63.6%
Home Confinement DUI	1	2	3	13	50.0%	-76.9%
HWH	128	91	55	117	-39.6%	-53.0%
TS	61	52	44	151	-15.4%	-70.9%
Special Parole	80	60	70	101	16.7%	-30.7%
Nursing home	0	0	0	0	-	-
End of Sentence	365	357	349	551	-2.2%	-36.7%
Total	775	703	652	1,025	-7.3%	-36.4%
Pre-trial Releases*						
From Court	106	116	114	442	-1.7%	-74.2%
Release to Bond	273	333	316	362	-5.1%	-12.7%

* Totals reflect events, not individual offenders

DOC - Community Release Unit (CRU)

Table 3 - Case reviews and release metrics

	Cases				Approval
	Reviewed	Approved	Denied	Continued	Rate
Sept.	361	149	56	45	41%
Oct.	302	119	47	38	39%
Nov.	223	110	43	25	49%
Nov. '19	688	298	103	111	43%

Note: Figures published here are based on the operational data available at the time of publication. Data in subsequent issues may not agree.

Board of Pardons and Paroles

Table 4 - Parole hearings, new cases

	Parole Hearings	Paroles granted	Grant rate	Paroles granted, 2019	Paroles granted, 2018
Sept.	150	102	68%	66	82
Oct.	129	78	60%	72	52
Nov.	71	36	51%	67	74

Table 4a - Other BOPP actions

	Reparole from revocation	Reparole from rescission	Closed interest cases	Special parole cases	Transfer parole cases
Sept. 2020	21	0	13	21	50
Oct. 2020	19	0	19	15	36
Nov. 2020	15	1	8	11	14
Nov. 2019	33	1	18	21	9

The pre-trial population

Table 5 - Bond ranges for pre-trial detainees

Bond amount	Oct. 1, 2020	Nov. 1, 2020	Dec. 1, 2020	Dec. 1, 2019
Less than \$20K	328	359	354	451
\$20K to < \$50K	346	386	368	421
\$50K to < \$100K	423	454	451	530
\$100K or higher	1,711	1,734	1,772	1,707
Persons w/bonds	2,808	2,933	2,945	3,109
Over \$1M	265	273	279	208

Table 5a - Pre-trial, weeks since admission

Weeks since last DOC admit	Oct. 1, 2020	Nov. 1, 2020	Dec. 1, 2020	Dec. 1, 2019
< 1 week	210	220	181	353
1 to < 3 weeks	167	202	157	288
3 to < 10 weeks	443	480	535	667
10 to < 30 weeks	610	647	720	879
30 wks or more	1,383	1,387	1,353	923
Pre-trial prisoners	2,813	2,936	2,946	3,110

Table 5b - Pre-trial admits, new offenders

	Sept. 2020	Oct. 2020	Nov. 2020	Nov. 2019
Arraignments	1,665	1,696	1,490	2,404
Pre-trial Admits	658	757	637	1,046
New to DOC	174	188	149	263
% New	26%	25%	23%	25%

Court Support Services Division

Table 6 - The Jail Re-interview Program

	Pre-trial admissions	Offender interviews	Offenders released	Released last year
Sept.	658	651	156	288
Oct.	757	656	148	342
Nov.	637	554	180	293

Table 6a - Pre-trial bail and probation caseloads

	Pre-trial Bail Case Starts	Client Supv. Starts	Split Sentence Starts	Pre-trial bail cases
Sept.	2,050*	529	234	12,665*
Oct.	2,050*	666	230	12,665*
Nov.	2,050*	696	198	12,665*
Nov. '19	2,050*	1,808	358	12,665*

* CSSD estimates

Chart 3 – Prison population

First week of the month, avg. daily count (ADC)

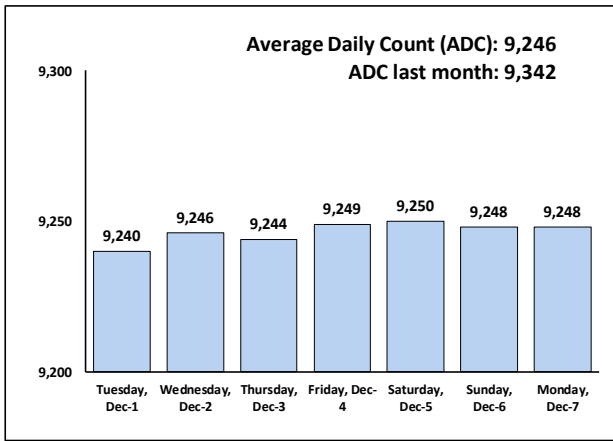


Chart 6 – Monthly DOC Admissions

November 2019 through November 2020

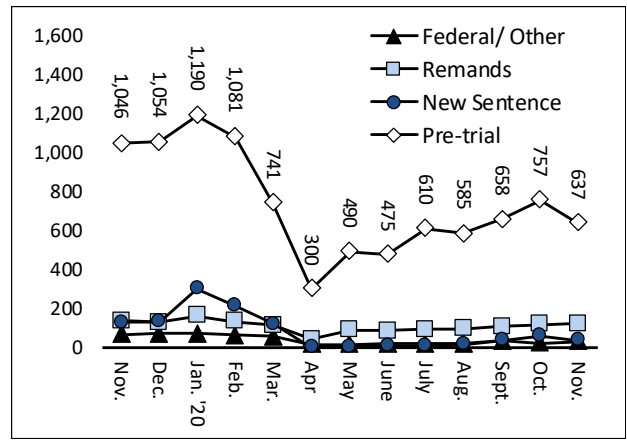


Chart 4 – Prison population, first-of-month

2017, 2018, 2019 and 2020

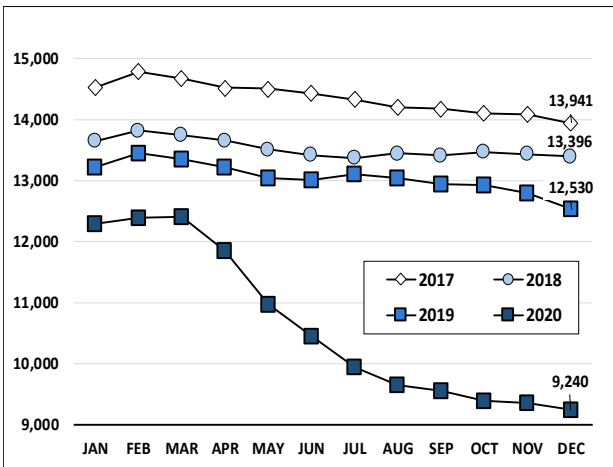


Chart 7– Remands from community release

November 2020

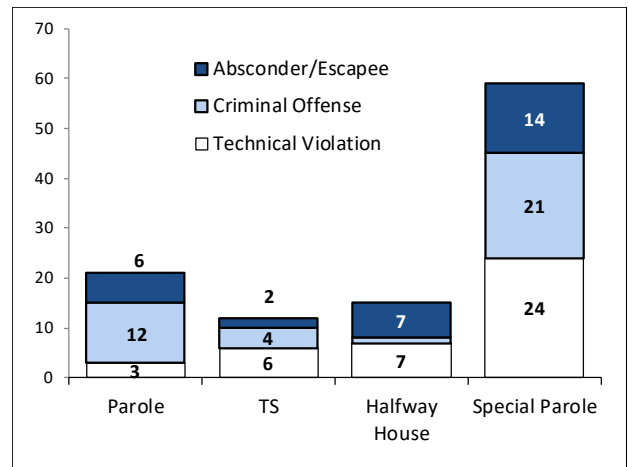


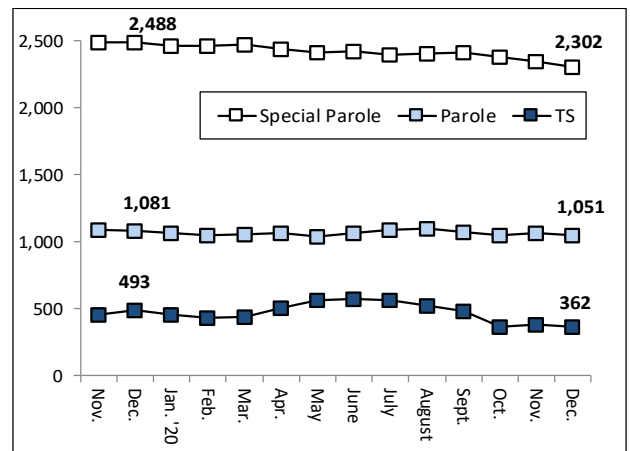
Chart 5 – Statewide criminal arrests

2019 and 2020

Editor's Note: Analysis of statewide arrest data was not finalized by the publication deadline for the December Monthly Indicators Report. When complete, this analysis will be included future reports.

Chart 8 – DOC community supervision

Nov. 1, 2019 through Dec. 1, 2020



Note: Data for all charts, except for Chart 5, was supplied by CT DOC. Data for Chart 5 are for new case starts in the state Criminal Motor Vehicle System (CRMVS). Chart 8 includes offenders in halfway houses.