

OPM - Criminal Justice Policy & Planning Division

Monthly Indicators Report

Highlights

- Connecticut’s prisons and jails held 12,936 inmates on October 1st, nearly the same figure as last month. Last October (2018), there were about 500 more offenders confined in DOC facilities.
- The sentenced portion of the prison population is at its lowest point (9,257) since January 1993 when the population was growing, not shrinking as it is today. Prison construction accelerated the growth. The number of sentenced prisoners increased 22% during calendar year 1993.
- The number of special parolees on remand status continues to decline. 366 inmates were in that status on October 1, the lowest figure since 2012. It is worth noting that in 2012, the DOC had 1631 special parolees under its supervision. Today that figure is 2,831 – 1,200 more.
- OPM recently discovered a problem with arrest figures for the months of June, July and August. Pending cases from the now shuttered GA17 were counted as new arrests as they were transferred to GA15 when the data systems were updated. OPM is working on a solution and will report new figures as they become available.
- Chart 2a compares Connecticut’s violent crime rate against other states. Connecticut’s violent crime rate fell 9% between 2017 and 2018, falling 27% since 2012, the second largest decrease of any state over that time.

Prison Population Forecast

Eight months have passed since OPM issued its February forecast. Following a larger than expected drop early in the year, the population has closely matched the month to month change predicted by OPM. Since May, monthly headcounts are about 100 inmates lower than they were in early May, fluctuating mildly. Flat headcounts mask the great volume of turnover that happens between the snapshots used to make the chart below. During September, a typical month at the DOC, there were 1,650 admission events (chart 2). Roughly, an equal number of exits balanced the 1,650 admissions. Taken together, there were 3,300 transitions, either in or out of a DOC facility during the month of September. Despite all this activity, the population dropped by only 23 inmates.

With the ebbs and flows of prisoner movements, the prison population follows a regular season pattern. October typically marks the end of a summer uptick or more recently, a temporary summer-long stall in an otherwise contracting population. Following a late year decline, the annual low point comes just as the calendar year rolls over. OPM sees no reason to deviate from historical trends in the coming months. As of this writing there are signs that the population has already begun its annual late year dip.

TABLE 1 – Prison Population Forecast

	Avg. Daily Count	OPM 2019 Forecast	Inmate difference
JAN '19	13,259	-	-
FEB	13,436	13,400	-
MAR	13,352	13,298	-54
APR	13,247	13,293	46
MAY	13,029	13,208	179
JUN	13,013	13,205	192
JUL	13,052	13,177	125
AUG	13,020	13,207	187
SEP	12,947	13,204	257
OCT	12,924	13,183	259
NOV		13,131	-
DEC		13,094	-
JAN '20		12,940	-
FEB		13,090	-

Avg. Daily Count (ADC) for 1st week of month

In the coming months, OPM expects the contraction in the prison population to closely match the rate predicted in the February forecast – perhaps dipping as low as 12,750.

Chart 1 – Actual prison population against the OPM forecasts
January 1, 2017 through February 1, 2019

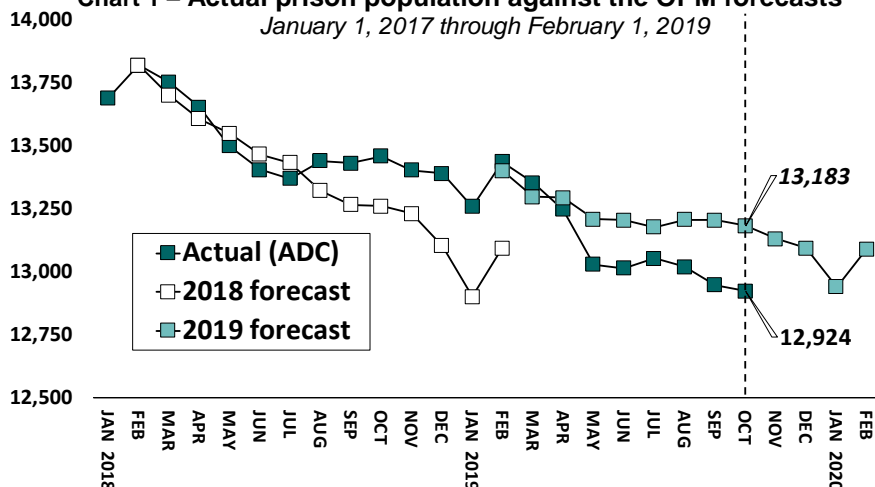


Chart 2 - Criminal justice, monthly counts and flows

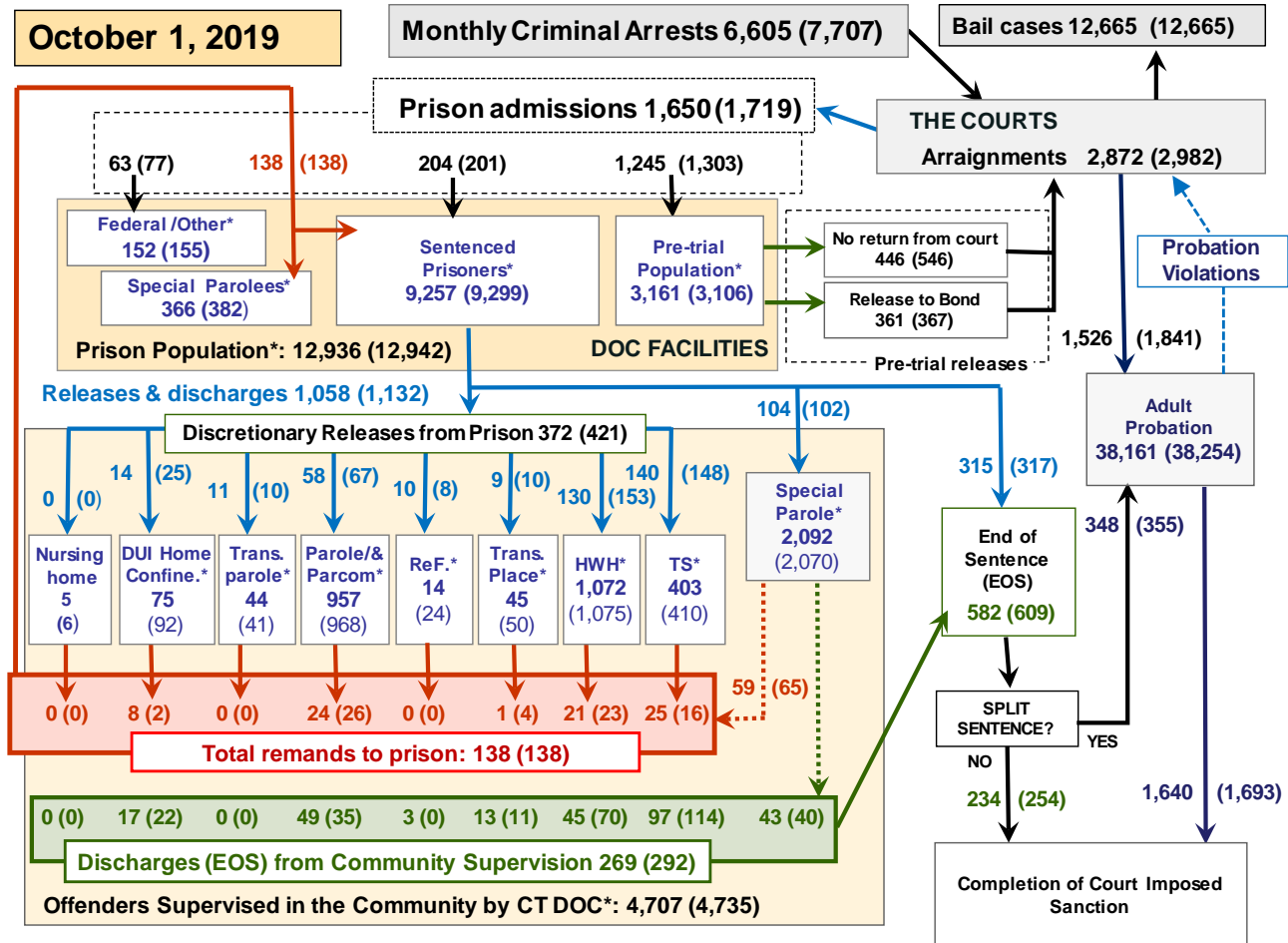
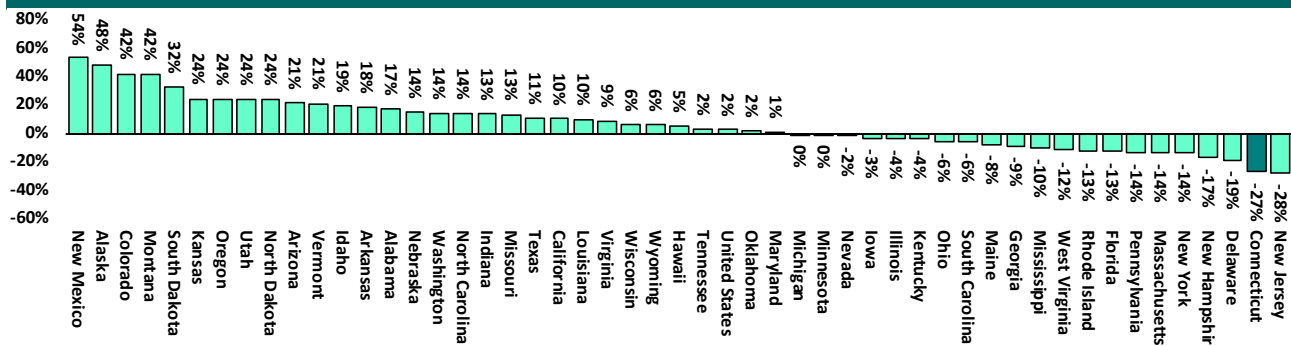


Chart 2 contains monthly operations data for September 2019 and daily counts reported on October 1, 2019. Asterisks (*) indicate the daily count on October 1st. Figures for last month are enclosed by parentheses. Sources: Arrests – CRMVS, Court and probation data - CSSD, all other data - CT DOC.

Chart 2a – Violent crime rates, state by state comparison



According to FBI statistics, Connecticut's violent crime rate* has fallen by 27% compared to 2012 figures, the second largest drop in the country (highlighted by the darker shade in the chart above). Only New Jersey's violent crime rate has fallen by a larger margin (26.8% vs 28.2%) over the same time period.

Falling four out of the past six years, Connecticut's violent crime rate has gone from the eighteenth lowest in 2012 to the fifth lowest in 2018. Year-on-year declines have consistently trended lower with annual declines of -8%, -9%, -7% between 2012

and 2015. The next two years saw a modest increase, +3% (2016), and no change (2017).

Following a two year hiccup, the violent crime rate fell by -9% in 2018. Connecticut's performance on this key indicator has outpaced the national average. Nationwide, violent crime fell by just over 3% in 2018.

OPM watches this metric closely as violent crime drives, to a large degree, the volume and length of involvement in the criminal justice system.

Violent crime rate = reported crime/population

Table 2 - First-of-month totals

	2019		2019	2018	% Change	
	Aug. 1	Sept. 1	Oct. 1	Oct. 1	Monthly	Annual
DOC Facilities						
Federal/Other	157	155	152	123	-1.9%	23.6%
Sentenced	9,366	9,299	9,257	9,491	-0.5%	-2.5%
Special Parole	371	382	366	442	-4.2%	-17.2%
Pre-trial	3,141	3,106	3,161	3,416	1.8%	-7.5%
Total	13,035	12,942	12,936	13,472	0.0%	-4.0%
DOC Community						
Transfer Parole	41	40	44	34	10.0%	29.4%
Parole/ Parcom Total	959	968	957	1,083	-1.1%	-11.6%
Parole	797	806	800	907	-0.7%	-11.8%
Parcom @ CT	162	162	157	176	-3.1%	-10.8%
Furlough	25	24	14	10	-	-
Trans Placement	59	50	45	59	-10.0%	-23.7%
DUI/Home confine.	92	92	75	105	-18.5%	-28.6%
Halfway House Total	1,087	1,075	1,072	1,047	-0.3%	2.4%
Comm Release	472	497	520	504	4.6%	3.2%
TS	35	27	26	26	-3.7%	0.0%
Parole	164	145	143	146	-1.4%	-2.1%
Transfer Parole	2	6	10	6	-	-
Special Parole	414	400	373	365	-6.8%	2.2%
TS	406	410	403	416	-1.7%	-3.1%
Nursing home	6	6	5	6	-	-
Special Parole	2,055	2,070	2,092	1,895	1.1%	10.4%
Total	4,730	4,735	4,707	4,655	-0.6%	1.1%

Table 2a - Monthly admissions, releases & discharges

	2019		2019	2018	% Change	
	July	August	Sept.	Sept.	Monthly	Annual
Admissions						
Federal/Other	81	77	63	58	-18.2%	8.6%
Remands	117	138	138	157	0.0%	-12.1%
DUI	8	4	8	2	-	-
Parole	20	26	24	29	-7.7%	-17.2%
Trans Plac/Furlough	17	4	1	2	-	-
HWH	28	23	21	33	-8.7%	-36.4%
TS	15	16	25	28	56.3%	-10.7%
Special Parole	46	65	59	63	-9.2%	-6.3%
New Sentence	183	201	204	214	1.5%	-4.7%
VOP	66	69	54	51	-21.7%	5.9%
Pre-trial	1,337	1,303	1,245	1,275	-4.5%	-2.4%
Total	1,718	1,719	1,650	1,704	-4.0%	-3.2%
Releases and discharges						
Transfer Parole	7	10	11	6	-	-
Parole	78	67	58	77	-13.4%	-24.7%
Furlough	10	8	10	7	-	-
Trans. Placement	17	10	9	18	-10.0%	-50.0%
Home Confinement DUI	18	25	14	25	-44.0%	-44.0%
HWH	118	153	130	116	-15.0%	12.1%
TS	138	148	140	111	-5.4%	26.1%
Special Parole	156	102	104	118	2.0%	-11.9%
Nursing home	0	0	0	0	-	-
End of Sentence	629	609	582	551	-4.4%	5.6%
Total	1,171	1,132	1,058	1,029	-6.5%	2.8%
Pre-trial Releases*						
From Court	472	546	446	474	-18.3%	-5.9%
Release to Bond	378	367	361	371	-1.6%	-2.7%

* Totals reflect events, not individual offenders

DOC - Community Release Unit (CRU)

Table 3 - Case reviews and release metrics

	Cases				Approval
	Reviewed	Approved	Denied	Continued	Rate
July	711	312	125	115	43%
Aug.	767	338	140	128	44%
Sept.	617	270	109	99	44%
Sept. '18	641	310	93	83	48%

Note: Figures published here are based on the operational data available at the time of publication. Data in subsequent issues may not agree.

Board of Pardons and Paroles

Table 4 - Parole hearings, new cases

	Parole Hearings	Paroles granted	Grant rate	Paroles granted, 2018	Paroles granted, 2017
July	140	62	44%	77	87
Aug	137	68	50%	73	70
Sept.	140	66	47%	82	80

Table 4a - Other BOPP actions

	Reparole from revocation	Reparole from rescission	Closed interest cases	Special parole cases	Transfer parole cases
July	44	2	17	36	13
Aug	29	2	14	21	6
Sept.	51	1	11	21	17
Sept. '18	51	1	20	47	13

The pre-trial population

Table 5 - Bond ranges for pre-trial detainees

Bond amount	Aug. 1, 2019	Sept. 1, 2019	Oct. 1, 2019	Oct. 1, 2018
Less than \$20K	508	507	515	598
\$20K to < \$50K	449	456	455	488
\$50K to < \$100K	570	545	526	634
\$100K or higher	1,763	1,751	1,731	1,784
Persons w/bonds	3,293	3,259	3,227	3,504
Over \$1M	193	194	202	197

Table 5a - Pre-trial, weeks since admission

Weeks since last DOC admit	Aug. 1, 2019	Sept. 1, 2019	Oct. 1, 2019	Oct. 1, 2018
< 1 week	437	411	360	420
1 to < 3 weeks	336	308	311	353
3 to < 10 weeks	739	770	754	834
10 to < 30 weeks	878	877	879	968
30 wks or more	903	893	928	931
Pre-trial prisoners	3,293	3,259	3,232	3,506

Table 5b - Pre-trial admits, new offenders

	July 2019	Aug 2019	Sept. 2019	Sept. 2018
Arraignments	3,049	2,982	2,872	2,566
Pre-trial Admits	1,337	1,303	1,245	1,275
New to DOC	359	311	308	350
% New	27%	24%	25%	27%

Court Support Services Division

Table 6 - The Jail Re-interview Program

	Pre-trial admissions	Offender interviews	Offenders released	Released last year
July	1,337	974	324	325
Aug.	1,303	1,046	363	383
Sept.	1,245	870	288	314

Table 6a - Pre-trial bail and probation caseloads

	Pre-trial Bail Case Starts	Client Supv. Starts	Split Sentence Starts	Pre-trial bail cases
July	2,050*	1,925	357	12,665*
Aug.	2,050*	1,841	355	12,665*
Sept.	2,050*	1,526	348	12,665*
Sept. '18	2,050*	1,791	342	12,660*

* CSSD estimates

Chart 3 – Prison population

First week of the month, avg. daily count (ADC)

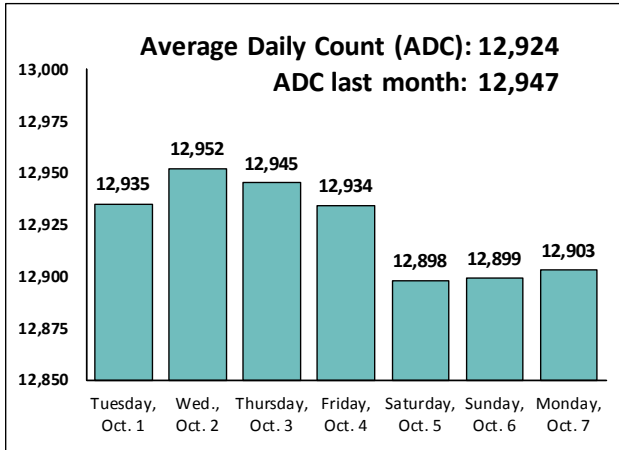


Chart 6 – Monthly DOC Admissions

August 2018 through September 2019

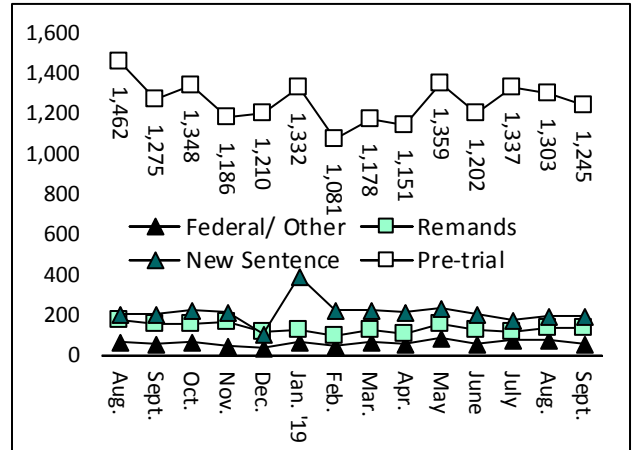


Chart 4 – Prison population, first-of-month

2016, 2017, 2018 and 2019

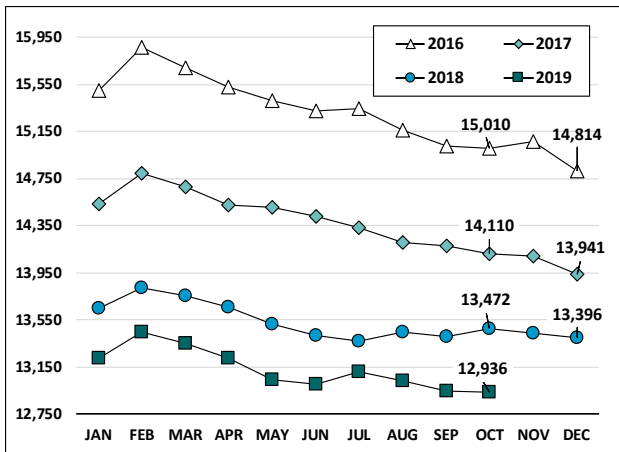


Chart 7 – Remands from community release

September 2019

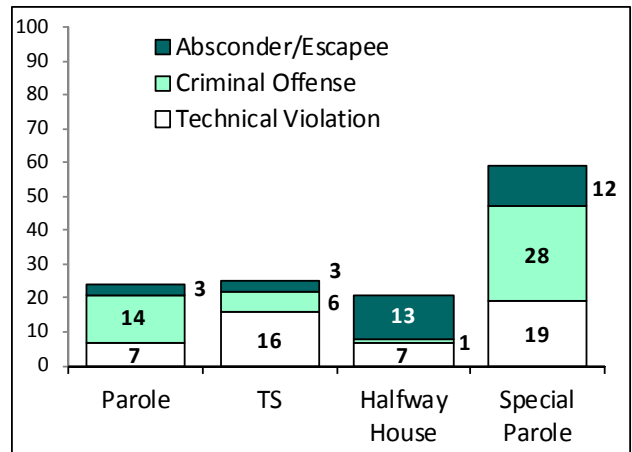


Chart 5 – Statewide criminal arrests

2018 and 2019

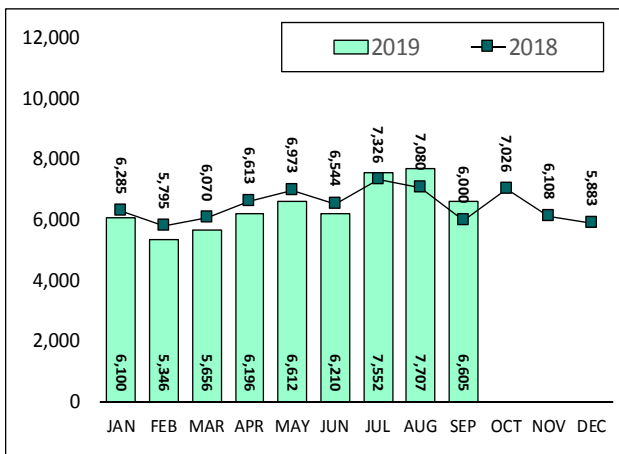
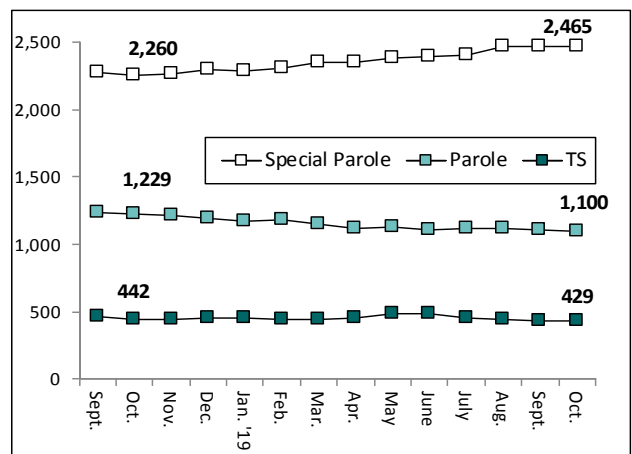


Chart 8 – DOC community supervision

Sept. 1, 2018 through Oct. 1, 2019



Note: Data for all charts, with the exception of Chart 5, was supplied by CT DOC. Data for Chart 5 are for new case starts in the state Criminal Motor Vehicle System (CRMVS). Chart 8 includes offenders in halfway houses.