

OPM - Criminal Justice Policy & Planning Division

Monthly Indicators Report

Highlights

- On November 1, 2018 - 13,434 inmates were incarcerated in Connecticut's prisons and jails, only a fraction fewer than last month, but 654 fewer than November 2017, a 4.6% drop.
- Recent analysis by OPM revealed the DOC currently has custody of 614 offenders with sentences extending beyond 2050. 552 are in facilities; 62 are under community supervision.
- Connecticut has a new Governor-elect and General Assembly. While the full effect of these changes is not known, some turnover at the top of several criminal justice agencies has already been announced. Commissioners Scott Semple, of the DOC, Dora Schiro, of DESPP, and Mike Lawlor, Undersecretary of OPM's Criminal Justice Policy Planning Division have announced their plans to leave state service.
- The number of people admitted to prison each month is often related to the number of statewide arrests. Arraignments, on the other hand, appear to follow a different pattern. For more, see chart 2a.
- On Oct. 31, inmate Luis Clarke managed to scale a fence at the Cheshire Annex, a small low-security unit housing prisoners who have been approved for outside work details. Clarke was apprehended, without incident, several hours after his absence was discovered. His was the second escape from a DOC facility this year.
- The Monthly Indicators Report is available online at: <https://www.ct.gov/opm/cwp/view.asp?a=2976&Q=383680&opmNavGID=1797>

Prison Population Forecast

The prison population continues to hover above the figure that was forecast by OPM in February. The gap separating the actual population and the forecast population to about 175 inmates. This discrepancy is an improvement over the population forecasts OPM produced in 2016 and 2017. During 2016 and 2017, the prison population fell much faster than predicted. In 2018 OPM updated its forecast methodology to add more weight to more recent data. As we head into the last few months of the year, the prison system should shed several hundred inmates.

At its most basic, the prison population fluctuates when the number of people admitted to prison exceeds, or is less than, the number of people who are released. In recent years, both prison admits and releases have fallen as the whole criminal justice system constricted.

After a decade of steadily declining inmate counts, the most important question now is appears to be, where and when will the prison population level off? This paper has documented significant shifts in the nature and composition of the criminal justice system and ther state's prison system. Until very recently, the idea that CT's prison population could level off in a range between 11,000 and 12,000 prisoners appeared naïve and unrealistic. The fact that the rate of drops in the prison population is slowing and that the old population forecast models are outdated presents new challenges for OPM and its partner agencies.

TABLE 1 – Prison Population Forecast

	Avg. Daily Count	OPM 2018 Forecast	Inmate difference
JAN '18	13,688	-	-
FEB	13,819	13,819	-
MAR	13,753	13,701	-52
APR	13,652	13,607	-45
MAY	13,499	13,550	51
JUN	13,405	13,465	60
JUL	13,369	13,433	64
AUG	13,439	13,320	-119
SEP	13,431	13,265	-166
OCT	13,459	13,259	-200
NOV	13,403	13,230	-173
DEC	-	13,103	-
JAN '19	-	12,901	-
FEB	-	13,093	-

Avg. Daily Count (ADC) for 1st week of month

Chart 1 – Actual prison population against the OPM forecasts

January 1, 2017 through February 1, 2019

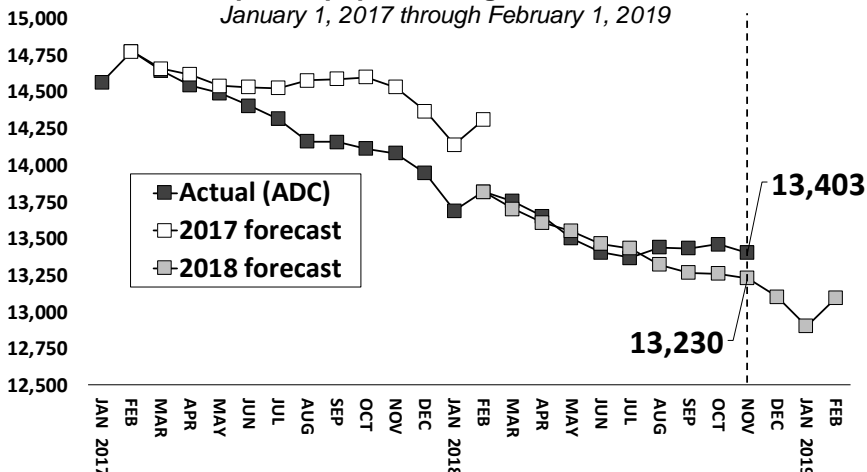


Chart 2 - Criminal justice, monthly counts and flows

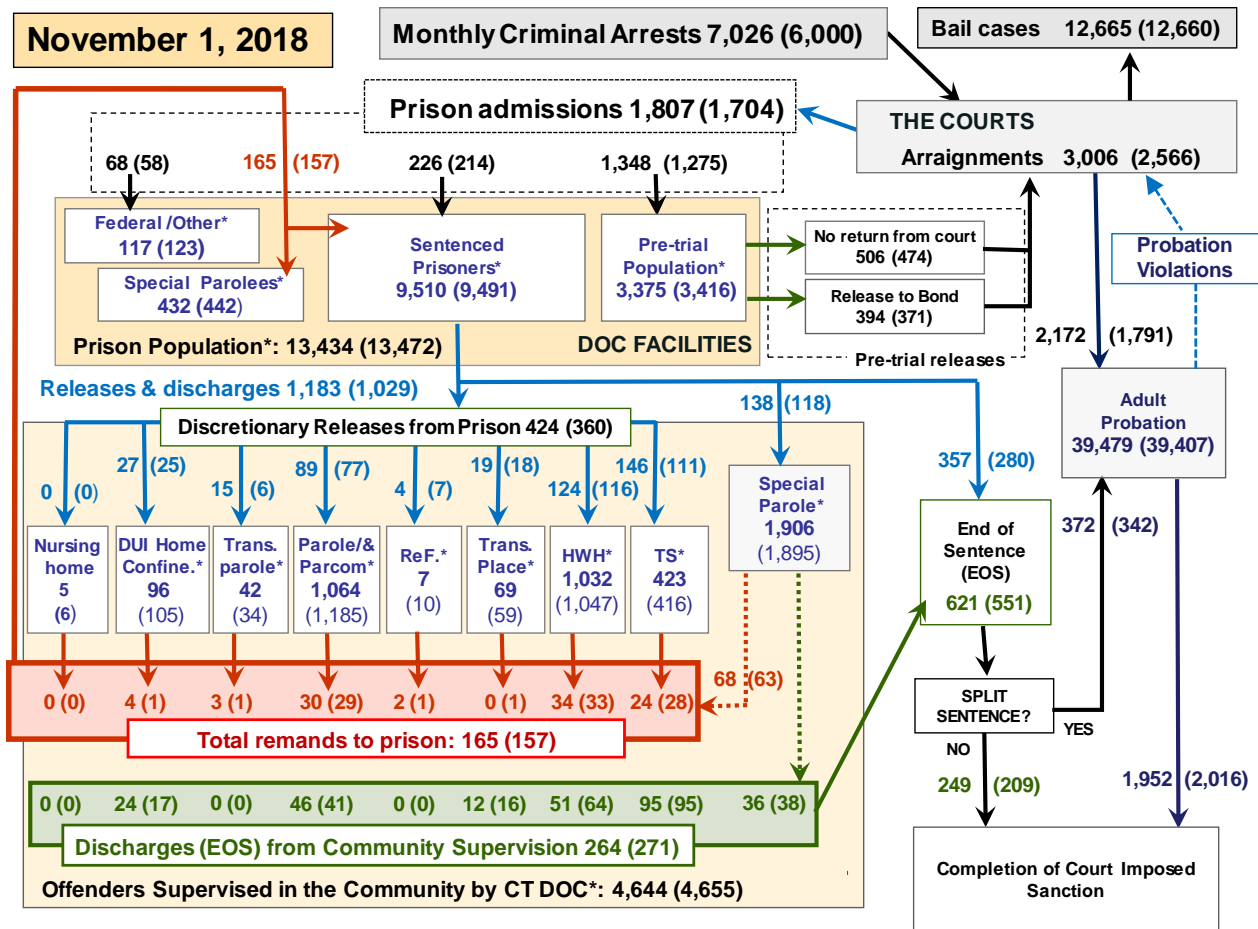
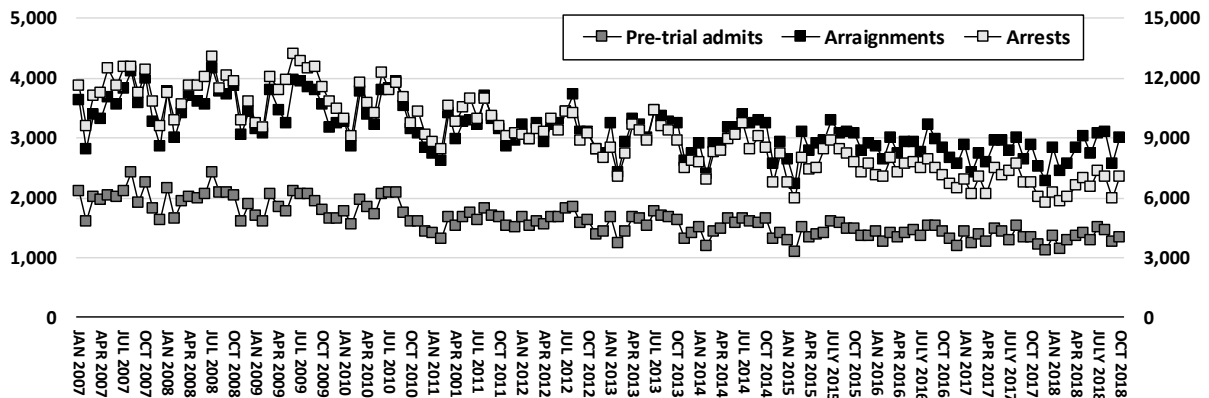


Chart 2 contains monthly operations data for October 2018 and daily counts reported on Nov. 1, 2018. Asterisks (*) indicate the daily count on Nov. 1st. Figures for last month are enclosed by parentheses. Sources: Arrests – CRMVS, Court and probation data - CSSD, all other data - CT DOC. Note: Some Judicial Branch data this month is estimated.

Chart 2a – Arrests, arraignments and pretrial admissions



The monthly indicators report has published data on offenders arraigned from lock-up since 2015. The trend lines in chart 2a illustrate changes often come slowly in criminal justice.

In the short term, while the system is strongly self-stabilizing, over a longer term significant changes can be observed. Since January 2007, arrests are down 36% and pretrial admits by 39%.

Arraignments, however, during the same period are down by only 17%. This suggests the relationship between arrests, arraignments, and pretrial prison admits is evolving

In January 2007, for every 100 arrests there were 31 arraignments from lockup and 18 pretrial prison admits. By October 2018 those figures changed to 43 arraignments and 19 pretrial prison admits per 100 criminal arrests.

Table 2 - First-of-month totals

	2018	2018	2018	2017	% Change	
	Sept. 1	Oct. 1	Nov. 1	Nov. 1	Monthly	Annual
DOC Facilities						
Federal/Other	121	123	117	146	-4.9%	-19.9%
Sentenced	9,437	9,491	9,510	10,246	0.2%	-7.2%
Special Parole	434	442	432	482	-2.3%	-10.4%
Pre-trial	3,418	3,416	3,375	3,214	-1.2%	5.0%
Total	13,410	13,472	13,434	14,088	-0.3%	-4.6%
DOC Community						
Transfer Parole	33	34	42	27	23.5%	55.6%
Parole/ Parcom Total	1,102	1,083	1,064	1,048	-1.8%	1.5%
Parole	932	907	889	890	-2.0%	-0.1%
Parcom @ CT	170	176	175	158	-0.6%	10.8%
Furlough	8	10	7	54	-	-
Trans Placement	64	59	69	55	16.9%	25.5%
DUI/Home confine.	101	105	96	87	-8.6%	10.3%
Halfway House Total	1,032	1,047	1,032	1,006	-1.4%	2.6%
Comm Release	524	504	495	515	-1.8%	-3.9%
TS	32	26	18	56	-30.8%	-67.9%
Parole	133	146	151	145	3.4%	4.1%
Transfer Parole	6	6	5	3	-	-
Special Parole	337	365	363	287	-0.5%	26.5%
TS	437	416	423	519	1.7%	-18.5%
Nursing home	6	6	5	5	-	-
Special Parole	1,935	1,895	1,906	1,784	0.6%	6.8%
Total	4,718	4,655	4,644	4,585	-0.2%	1.3%

Table 2a - Admissions, releases & discharges

	2018	2018	2018	2017	% Change	
	August	Sept.	Oct.	Oct.	Monthly	Annual
Admissions						
Federal/Other	70	58	68	94	17.2%	-27.7%
Remands	177	157	165	199	5.1%	-17.1%
DUI	5	2	7	6	-	-
Parole	34	29	30	38	3.4%	-21.1%
Trans Plac/Furlough	1	2	2	0	-	-
HWH	37	33	34	43	3.0%	-20.9%
TS	23	28	24	26	-14.3%	-7.7%
Special Parole	76	63	68	84	7.9%	-19.0%
New Sentence	206	214	226	209	5.6%	8.1%
VOP	64	51	70	83	37.3%	-15.7%
Pre-trial	1,462	1,275	1,348	1,348	5.7%	0.0%
Total	1,915	1,704	1,807	1,850	6.0%	-2.3%
Releases and discharges						
Transfer Parole	7	6	15	3	-	-
Parole	103	77	89	66	15.6%	34.8%
Furlough	13	7	4	34	-	-
Trans. Placement	26	18	19	30	5.6%	-36.7%
Home Confinement DU	27	25	27	24	8.0%	12.5%
HWH	175	116	124	162	6.9%	-23.5%
TS	147	111	146	163	31.5%	-10.4%
Special Parole	123	118	138	115	16.9%	20.0%
Nursing home	0	0	0	0	-	-
End of Sentence	666	551	621	650	12.7%	-4.5%
Total	1,287	1,029	1,183	1,247	15.0%	-5.1%
Pre-trial Releases*						
From Court	540	474	506	514	6.8%	-1.6%
Release to Bond	458	371	394	392	6.2%	0.5%

* Totals reflect events, not individual offenders

DOC - Community Release Unit (CRU)

Table 3 - Case reviews and release metrics

	Cases				Approval
	Reviewed	Approved	Denied	Continued	Rate
Aug.	719	341	117	101	47%
Sept.	641	310	93	83	48%
Oct.	762	356	121	108	47%
Oct. '17	768	347	137	105	45%

Board of Pardons and Paroles

Table 4 - Parole hearings, new cases

	Parole Hearings	Paroles granted	Grant rate	Paroles granted, 2017	Paroles granted, 2016
Aug.	155	73	47%	70	69
Sept.	167	82	49%	80	97
Oct.	134	52	39%	109	67

Table 4a - Other BOPP actions

	Reparole from revocation	Reparole from rescission	Closed interest cases	Special parole cases	Transfer parole cases
Aug	33	2	24	30	9
Sept.	51	1	20	47	13
Oct.	51	1	20	47	13
Oct. '17	44	2	17	35	1

The pre-trial population

Table 5 - Bond ranges for pre-trial detainees

Bond amount	Sept. 1, 2018	Oct. 1, 2018	Nov. 1, 2018	Nov. 1, 2017
Less than \$20K	643	598	563	554
\$20K to < \$50K	523	488	489	530
\$50K to < \$100K	633	634	641	709
\$100K or higher	1,811	1,784	1,778	1,579
Persons w/bonds	3,610	3,504	3,471	3,372
Over \$1M	193	197	191	161

Table 5a - Pre-trial, weeks since admission

Weeks since last DOC admit	Sept. 1, 2018	Oct. 1, 2018	Nov. 1, 2018	Nov. 1, 2017
< 1 week	417	420	384	443
1 to < 3 weeks	353	353	334	339
3 to < 10 weeks	932	834	802	798
10 to < 30 weeks	949	968	1,030	979
30 wks or more	961	931	927	815
Pre-trial prisoners	3,612	3,506	3,477	3,374

Table 5b - Pre-trial admits, new offenders

	Aug. 2018	Sept. 2018	Oct. 2018	Oct. 2017
Arraignments	3,095	2,566	3,006	2,867
Pre-trial Admits	1,462	1,275	1,348	1,348
New to DOC	367	350	325	354
% New	25%	27%	24%	26%

Court Support Services Division

Table 6 - The Jail Re-interview Program

	Pre-trial admissions	Offender interviews	Offenders released	Released last year
July	1,514	1,007	325	508
Aug.	1,462	1,065	383	426
Sept.	1,275	862	314	392

Table 6a - Pre-trial bail and probation caseloads

	Pre-trial Bail Case Starts	Client Supv. Starts	Split Sentence Starts	Pre-trial bail cases
July	2,055*	1,798	366	12,660*
Aug.	2,050*	2,070	385	12,650*
Sept.	2,050*	1,791	342	12,660*
Sept. '17	2,100*	1,720	368	12,700*

* CSSD estimates

Note: Figures published here are based on the operational data available at the time of publication. Data in subsequent issues may not agree.

Chart 3 – Prison population

First week of the month, avg. daily count (ADC)

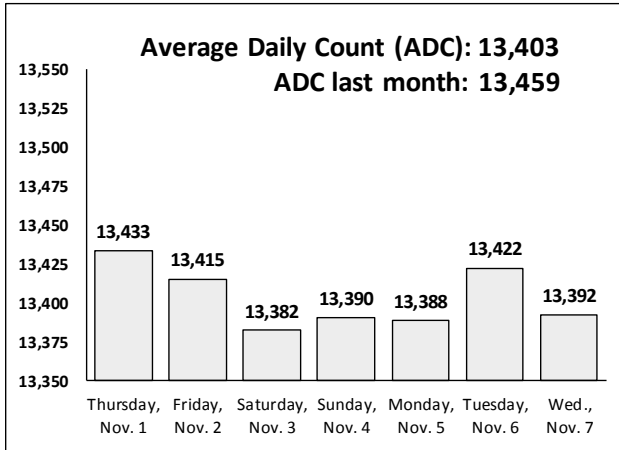


Chart 6 – Monthly DOC Admissions

Oct. 2017 through Nov. 2018

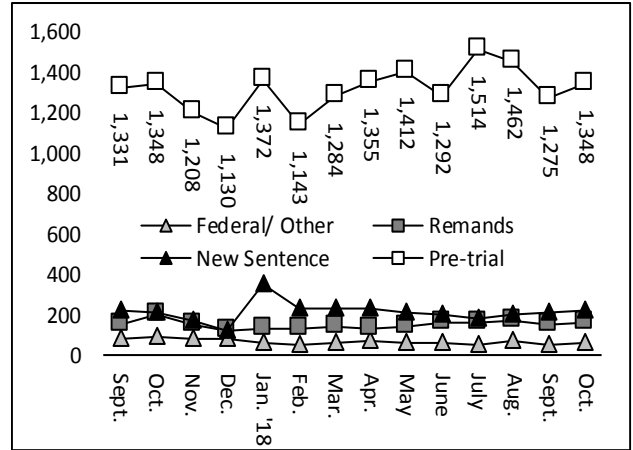


Chart 4 – Prison population, first-of-month

2015, 2016, 2017 and 2018

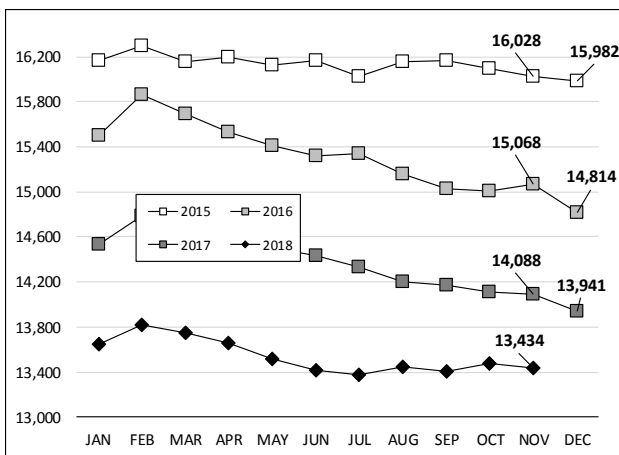


Chart 7 – Remands from community release

October 2018

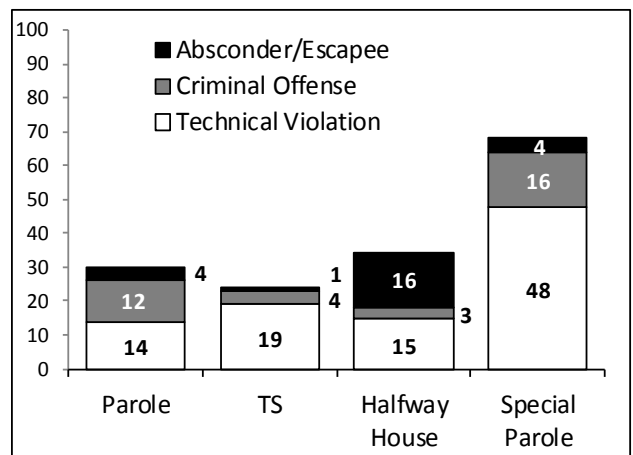


Chart 5 – Statewide criminal arrests

2017 and 2018

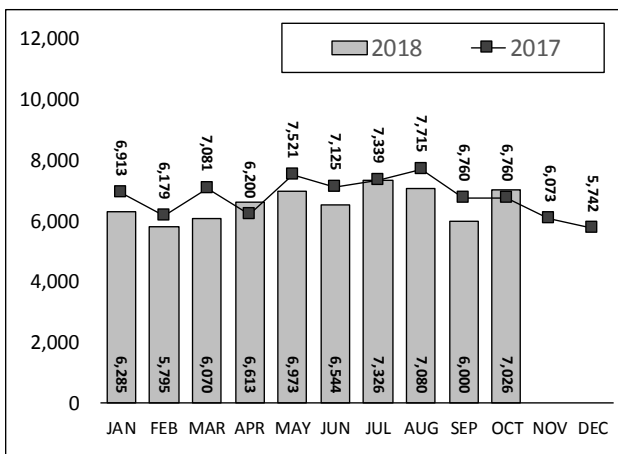
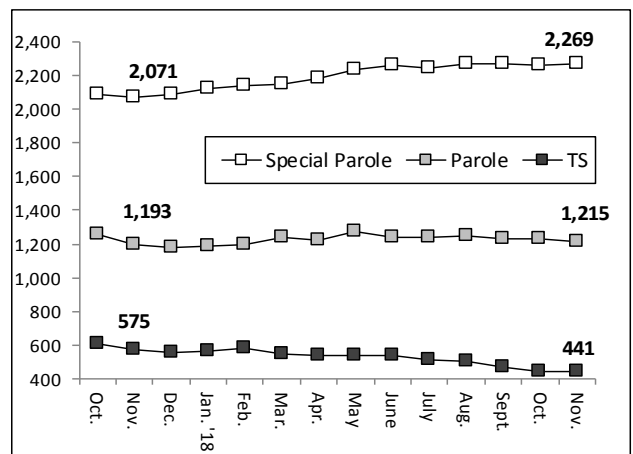


Chart 8 – DOC community supervision

Oct. 1, 2017 through Nov. 1, 2018



Note: Data for all charts, with the exception of Chart 5, was supplied by CT DOC. Data for Chart 5 are for new case starts in the state Criminal Motor Vehicle System (CRMVS). Chart 8 includes offenders in halfway houses.