

OPM - Criminal Justice Policy & Planning Division

Monthly Indicators Report

Highlights

- The state's prisons and jails held 13,396 inmates on December 1, 2018 - down 38 prisoners since November 1st and nearly flat since June when the population was 13,418.
- After an atypical month, the Board of Pardons and Paroles has returned to form. Approval rates dropped to below 40% in October, but rebounded to nearly 50% in November. Approval rates typically hover near 50%. OPM watches the BOPP's approval rate closely as an inexact indicator of the composition of sentenced population at the DOC. (table 4)
- The pretrial population is up 142 inmates or 4% since last year. Nearly all of the uptick is seen in those held for more than 30 weeks (about 7 months), suggesting something is changing in the pretrial population. (table 5a)
- As of December 1st, special parolees are very nearly the majority of the DOC's community supervision population. Including those in halfway house beds, special parole numbers nearly 2,300 offenders. The total community population is just over 4,600. In the last ten years, special parole has grown from under 20% of the DOC's community population to 50% in 2018. (see chart 2a)
- Nearly 1,800 pretrial inmates had bonds over 100k on December 1, 2018, 215 more than on the same date one year ago. (table 5)
- The Monthly Indicators Report is available online at: <https://www.ct.gov/opm/cwp/view.asp?a=2976&Q=383680&opmNavGID=1797>

Prison Population Forecast

In November, the prison population typically takes a steep, end-of-the-year, drop. Since 2002 the prison population has shrunk by an average of 170 inmates during November. As a result, OPM predicted the prison population would fall by about 100 prisoners. In reality the count shrunk by only 13 inmates. As a result, the gap separating the actual and forecast figures widened - from 173 to 287 inmates.

Early signs of the the late year drop off usually emerge late in the summer when the number of sentenced inmates gradually falls from September to late November before accelerating through December to the yearly low point in early January.

The pattern has changed. Since July, the sentenced population count has flatlined. One possible explanation is that the make up of the sentenced population is different than it was several years ago. Perhaps fewer offenders are being sentenced to short terms of incarceration, set to expire towards the end of the year. OPM will take a closer look at the composition of the sentenced inmate population when crafting the 2019 forecast.

Despite some changes to the system, OPM anticipates that the population will decline rapidly in December, settling near 13,150 at year's end.

TABLE 1 – Prison Population Forecast

	Avg. Daily Count	OPM 2018 Forecast	Inmate difference
JAN '18	13,688	-	-
FEB	13,819	13,819	-
MAR	13,753	13,701	-52
APR	13,652	13,607	-45
MAY	13,499	13,550	51
JUN	13,405	13,465	60
JUL	13,369	13,433	64
AUG	13,439	13,320	-119
SEP	13,431	13,265	-166
OCT	13,459	13,259	-200
NOV	13,403	13,230	-173
DEC	13,390	13,103	-287
JAN '19	-	12,901	-
FEB	-	13,093	-

Avg. Daily Count (ADC) for 1st week of month

Chart 1 – Actual prison population against the OPM forecasts

January 1, 2017 through February 1, 2019

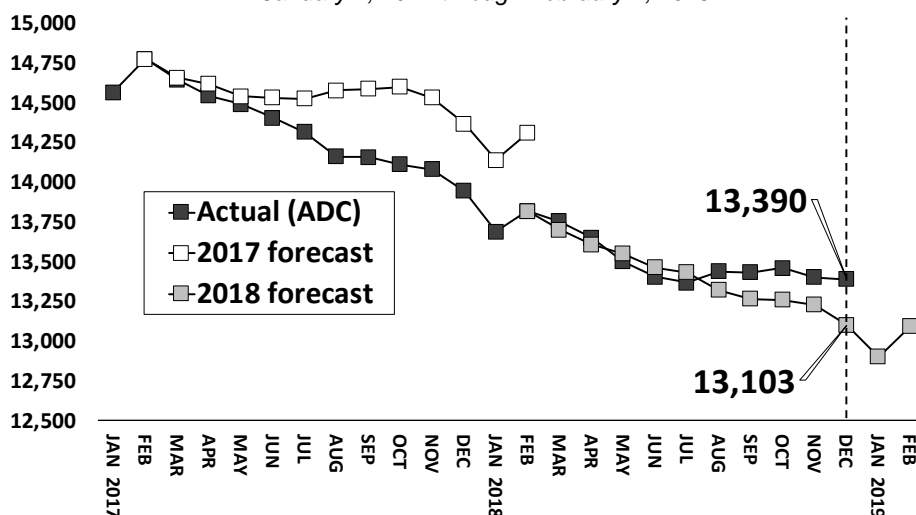


Chart 2 - Criminal justice, monthly counts and flows

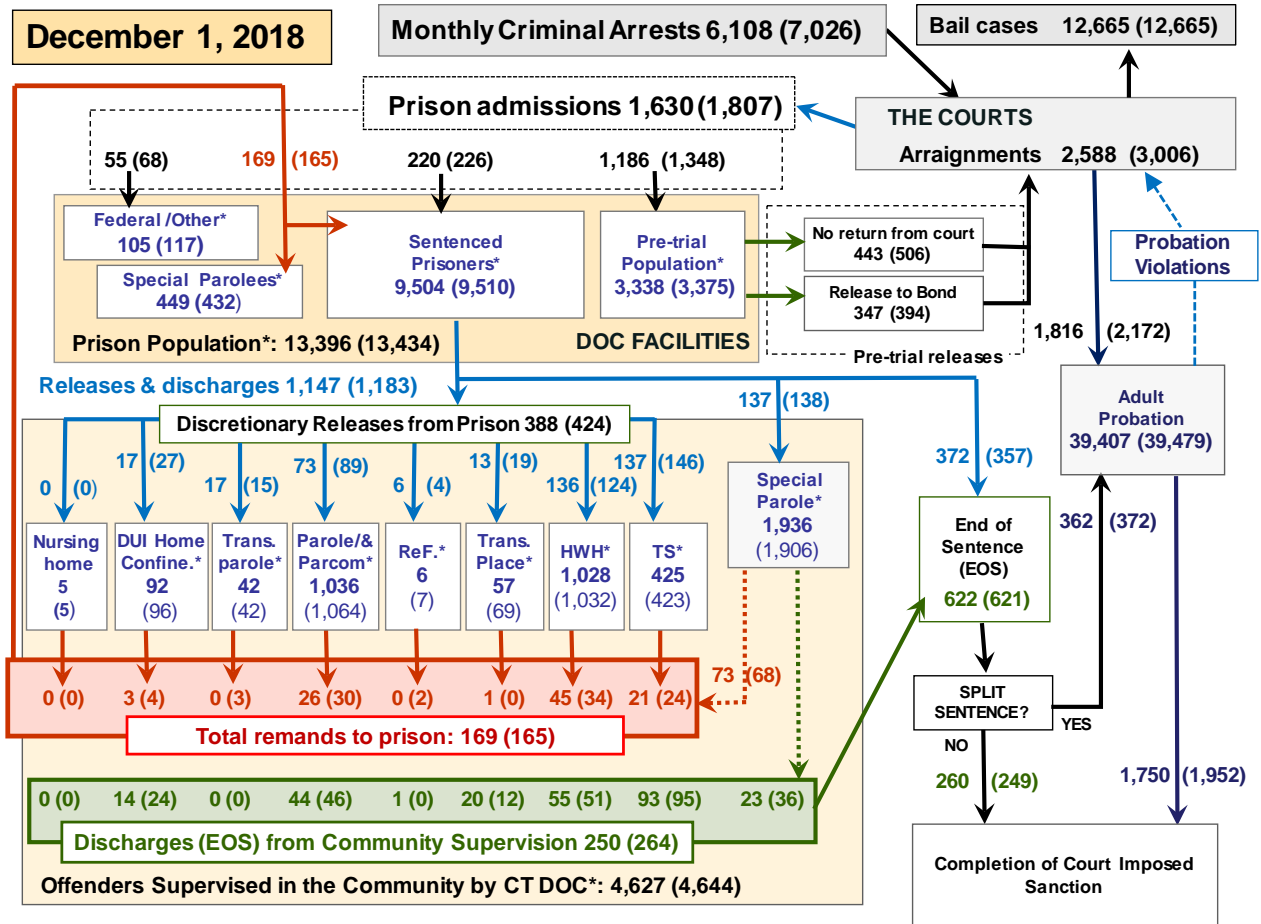
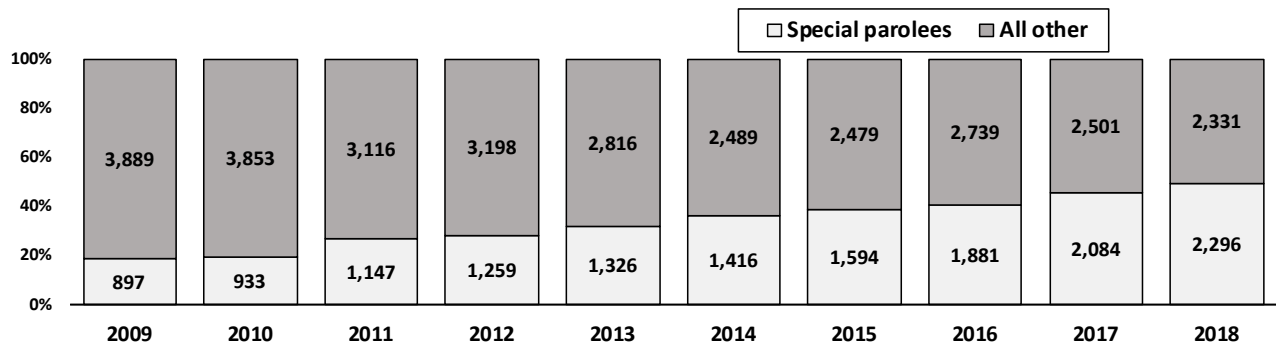


Chart 2 contains monthly operations data for November 2018 and daily counts reported on Dec. 1, 2018. Asterisks (*) indicate the daily count on Dec. 1st. Figures for last month are enclosed by parentheses. Sources: Arrests – CRMVS, Court and probation data - CSSD, all other data - CT DOC. Note: Some Judicial Branch data this month is estimated.

Chart 2a – Special Parole and Community Supervision



The use of special parole as a sentencing option has radically changed the composition of the DOC's parole and community supervision. The bar chart above is the December 1st DOC's community population count over the last ten years. The darker shaded group represents all offenders released and supervised by a discretionary mechanism. The lighter shade is special parole, including those in halfway house beds.

Added to the court's arsenal in 1998, the impact of special parole did not reach the DOC's parole and community supervision for several years. By 2009, ten years into special parole's existence, special parolees were outnumbered by discretionary releases by a ratio of 4 to 1. This December, 1 out of every 2 offenders on supervised release are special parolees.

Table 2 - First-of-month totals

	2018		2017		% Change	
	Oct. 1	Nov. 1	Dec. 1	Dec. 1	Monthly	Annual
DOC Facilities						
Federal/Other	123	117	105	147	-10.3%	-28.6%
Sentenced	9,491	9,510	9,504	10,114	-0.1%	-6.0%
Special Parole	442	432	449	484	3.9%	-7.2%
Pre-trial	3,416	3,375	3,338	3,196	-1.1%	4.4%
Total	13,472	13,434	13,396	13,941	-0.3%	-3.9%
DOC Community						
Transfer Parole	34	42	42	27	0.0%	55.6%
Parole/ Parcom Total	1,083	1,064	1,036	1,043	-2.6%	-0.7%
Parole	907	889	859	887	-3.4%	-3.2%
Parcom @ CT	176	175	177	156	1.1%	13.5%
Furlough	10	7	6	59	-	-
Trans Placement	59	69	57	57	-17.4%	0.0%
DUI/Home confine.	105	96	92	91	-4.2%	1.1%
Halfway House Total	1,047	1,032	1,028	1,005	-0.4%	2.3%
Comm Release	504	495	485	519	-2.0%	-6.6%
TS	26	18	25	55	38.9%	-54.5%
Parole	146	151	153	139	1.3%	10.1%
Transfer Parole	6	5	5	2	-	-
Special Parole	365	363	360	290	-0.8%	24.1%
TS	416	423	425	504	0.5%	-15.7%
Nursing home	6	5	5	5	-	-
Special Parole	1,895	1,906	1,936	1,794	1.6%	7.9%
Total	4,655	4,644	4,627	4,585	-0.4%	0.9%

Table 2a - Admissions, releases & discharges

	2018		2017		% Change	
	Sept.	Oct.	Nov.	Nov.	Monthly	Annual
Admissions						
Federal/Other	58	68	55	88	-19.1%	-37.5%
Remands	157	165	169	155	2.4%	9.0%
DUI	2	7	3	2	-	-
Parole	29	30	26	26	-13.3%	0.0%
Trans Plac/Furlough	2	2	1	2	-	-
HWH	33	34	45	27	32.4%	66.7%
TS	28	24	21	35	-12.5%	-40.0%
Special Parole	63	68	73	62	7.4%	17.7%
New Sentence	214	226	220	172	-2.7%	27.9%
VOP	51	70	59	45	-15.7%	31.1%
Pre-trial	1,275	1,348	1,186	1,208	-12.0%	-1.8%
Total	1,704	1,807	1,630	1,623	-9.8%	0.4%
Releases and discharges						
Transfer Parole	6	15	6	2	-	-
Parole	77	89	73	85	-18.0%	-14.1%
Furlough	7	4	6	27	-	-
Trans. Placement	18	19	13	25	-31.6%	-48.0%
Home Confinement DU	25	27	17	24	-37.0%	-29.2%
HWH	116	124	136	150	9.7%	-9.3%
TS	111	146	137	158	-6.2%	-13.3%
Special Parole	118	138	137	124	-0.7%	10.5%
Nursing home	0	0	0	0	-	-
End of Sentence	551	621	622	651	0.2%	-4.5%
Total	1,029	1,183	1,147	1,246	-3.0%	-7.9%
Pre-trial Releases*						
From Court	474	506	443	463	-12.5%	-4.3%
Release to Bond	371	394	347	363	-11.9%	-4.4%

* Totals reflect events, not individual offenders

DOC - Community Release Unit (CRU)

Table 3 - Case reviews and release metrics

	Cases				Approval Rate
	Reviewed	Approved	Denied	Continued	
Sept.	641	310	93	83	48%
Oct.	762	356	121	108	47%
Nov.	667	286	95	102	43%
Nov. '17	735	364	109	91	50%

Board of Pardons and Paroles

Table 4 - Parole hearings, new cases

	Parole Hearings	Paroles granted	Grant rate	Paroles granted, 2017	Paroles granted, 2016
Sept.	167	82	49%	80	97
Oct.	134	52	39%	109	67
Nov.	159	74	47%	91	97

Table 4a - Other BOPP actions

	Reparole from revocation	Reparole from rescission	Closed interest cases	Special parole cases	Transfer parole cases
Sept.	51	1	20	47	13
Oct.	56	2	22	40	1
Nov.	37	1	15	28	2
Nov. '17	25	3	7	30	0

The pre-trial population

Table 5 - Bond ranges for pre-trial detainees

Bond amount	Oct. 1, 2018	Nov. 1, 2018	Dec. 1, 2018	Dec. 1, 2017
Less than \$20K	598	563	528	526
\$20K to < \$50K	488	489	518	498
\$50K to <\$100K	634	641	613	703
\$100K or higher	1,784	1,778	1,795	1,580
Persons w/bonds	3,504	3,471	3,454	3,307
Over \$1M	197	191	196	172

Table 5a - Pre-trial, weeks since admission

Weeks since last DOC admit	Oct. 1, 2018	Nov. 1, 2018	Dec. 1, 2018	Dec. 1, 2017
< 1 week	420	384	407	405
1 to < 3 weeks	353	334	279	278
3 to < 10 weeks	834	802	804	808
10 to < 30 weeks	968	1,030	1,020	990
30 wks or more	931	927	946	828
Pre-trial prisoners	3,506	3,477	3,456	3,309

Table 5b - Pre-trial admits, new offenders

	Sept. 2018	Oct. 2018	Nov. 2018	Nov. 2017
Arraignments	2,566	3,006	2,588	2,513
Pre-trial Admits	1,275	1,348	1,186	1,208
New to DOC	350	325	286	307
% New	27%	24%	24%	25%

Court Support Services Division

Table 6 - The Jail Re-interview Program

	Pre-trial admissions	Offender interviews	Offenders released	Released last year
Sept.	1,275	862	314	392
Oct.	1,348	978	342	380
Nov.	1,186	866	301	367

Table 6a - Pre-trial bail and probation caseloads

	Pre-trial Bail Case Starts	Client Supv. Starts	Split Sentence Starts	Pre-trial bail cases
Sept.	2,050*	1,791	342	12,660*
Oct.	2,050*	2,172	372	12,665*
Nov.	2,050*	1,816	362	12,665*
Nov. '17	2,080*	1,862	372	12,680*

* CSSD estimates

Note: Figures published here are based on the operational data available at the time of publication. Data in subsequent issues may not agree.

Chart 3 – Prison population

First week of the month, avg. daily count (ADC)

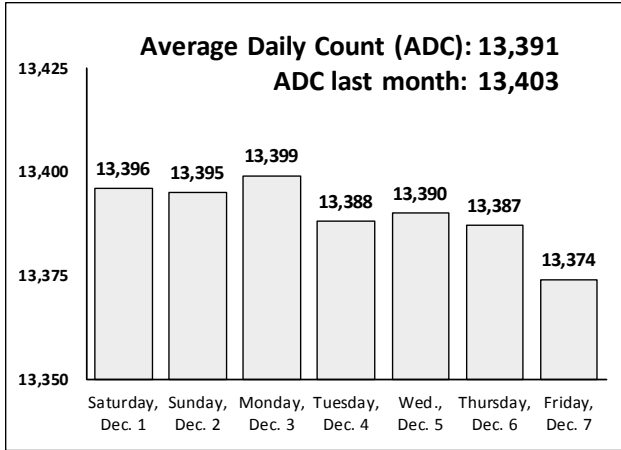


Chart 6 – Monthly DOC Admissions

Nov. 2017 through Dec. 2018

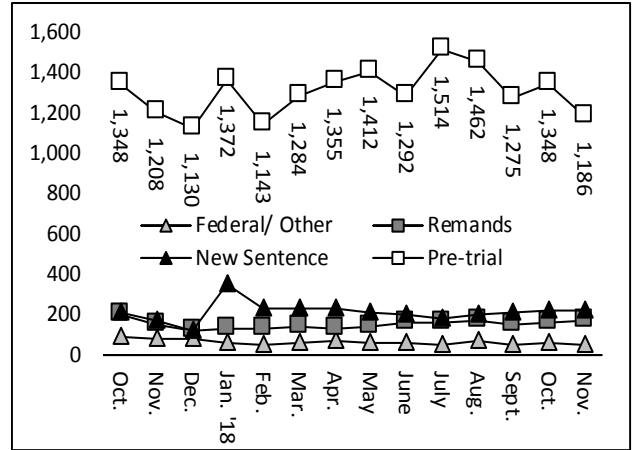


Chart 4 – Prison population, first-of-month

2015, 2016, 2017 and 2018

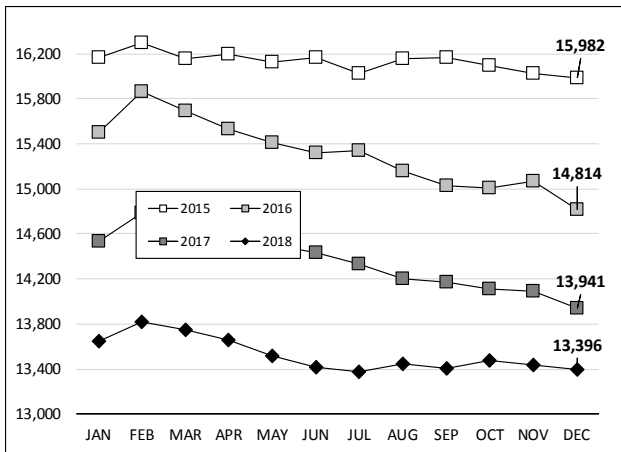


Chart 7– Remands from community release

November 2018

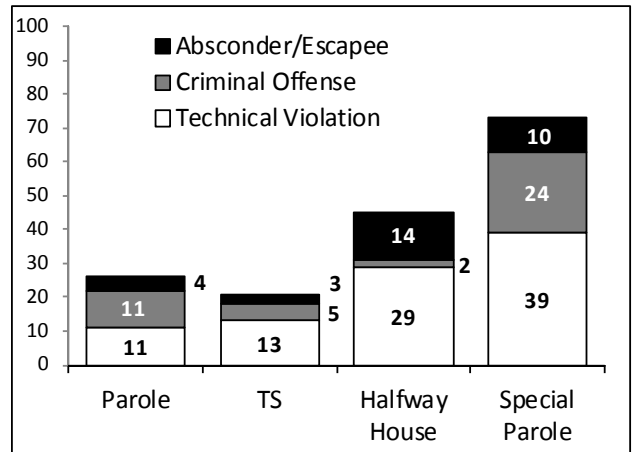


Chart 5 – Statewide criminal arrests

2017 and 2018

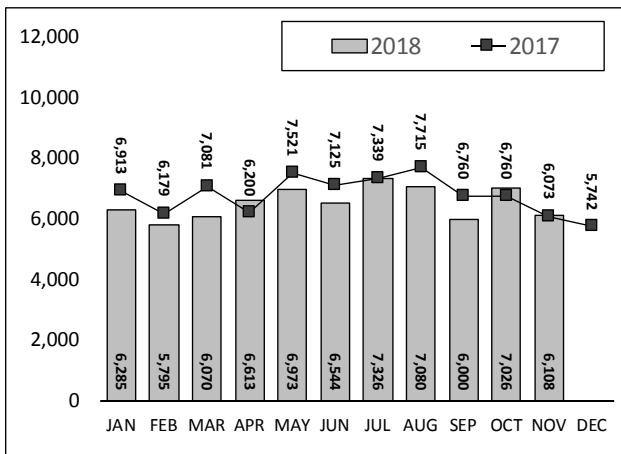
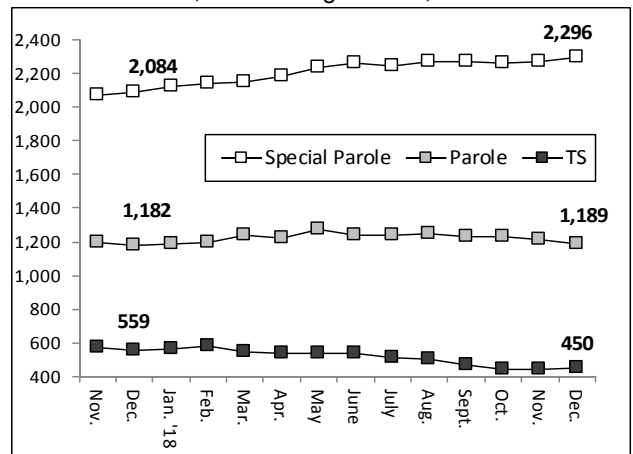


Chart 8 – DOC community supervision

Nov. 1, 2017 through Dec. 1, 2018



Note: Data for all charts, with the exception of Chart 5, was supplied by CT DOC. Data for Chart 5 are for new case starts in the state Criminal Motor Vehicle System (CRMVS). Chart 8 includes offenders in halfway houses.