

OPM - Criminal Justice Policy & Planning Division

Monthly Indicators Report

Highlights

- On October 1, 2017, 14,110 people were incarcerated in CT state prisons and jails. After dropping steadily between February and August, the contraction of the prison population has temporarily stalled. We anticipate the prison population will dip below 14,000 within the next two months.
- Only one segment of the offenders in DOC custody is increasing. The number of special parolees, both in the community and in halfway houses, rose from 1,847 to 2,085 – a 13% jump – during the last year. This figure does not include over 450 special parolees who have been returned to prison for technical or criminal violations. In the last year, there has been a moderate drop in the number of offenders on parole and transitional supervision (TS) (see chart 8).
- In the last 10 years, sentenced prisoners, as a percentage of all offenders in CT DOC, has declined from 63% to 55% (see chart 2a).
- An analysis of the parole revocation process conducted last year by students and faculty from a Yale Legal Clinic has led to a series of recommendations that include significant revisions to current practices governing prisoner remands. Their recommendations include the expansion of parolees' access to council, higher probable cause standards, training, and improved co-ordination between DOC and the Board of Pardons and Paroles.
- CSSD is currently implementing a new data reporting system. As a result, we are publishing estimates, provided to us by CSSD, of bail and probation figures for September and October. These figures could change in the future.

Prison Population Forecast

It is clear that OPM dramatically underestimated the rate at which the prison population can contract over the course of a single year. As of October 7th, the OPM's prison population forecast was off by 488 prisoners, or 3.3%. Last year, at this time, the forecast was off by 599 prisoners, or 3.8%. Since the best predictor of the near-future is generally the near-past, we expect next year's prison population forecast will be less cautious in projecting the contraction in the state's prison system.

For almost two decades, after a period of intense prison construction, the state's prison system settled into a regular, predictable rhythm. Large fluctuations in the size of the prison population were

exceedingly rare. It appears, however, that period is over. Consider this: in the year following the Cheshire murders in July 2007, the prison population grew by 521 prisoners, a 2.8% increase, at that time a large swing. Since last October, operating under normal circumstances, the prison population contracted by 900 prisoners – a 6% drop.

The prison population is not in an uncontrolled freefall. Declines in the prison population reflect changes, both large and small, that are 1) sending fewer people into prison, and 2) more efficiently and effectively managing the processes that govern discretionary release. At some point the prison-population trend line will reach an inflection point and then stabilize. When that will happen, at the moment, is not entirely clear.

TABLE 1 – Prison Population Forecast

	Avg. Daily Count	OPM 2017 Forecast	Inmate difference
JAN '17	14,565	-	-
FEB	14,776	14,776	-
MAR	14,646	14,658	12
APR	14,543	14,618	75
MAY	14,491	14,542	51
JUN	14,406	14,532	126
JUL	14,316	14,526	210
AUG	14,162	14,577	415
SEP	14,158	14,586	428
OCT	14,112	14,600	488
NOV	-	14,531	-
DEC	-	14,367	-
JAN '18	-	14,139	-
FEB	-	14,308	-

Avg. Daily Count (ADC) for 1st week of month

Chart 1 – Actual prison population against the OPM forecasts
January 1, 2016 through February 1, 2018

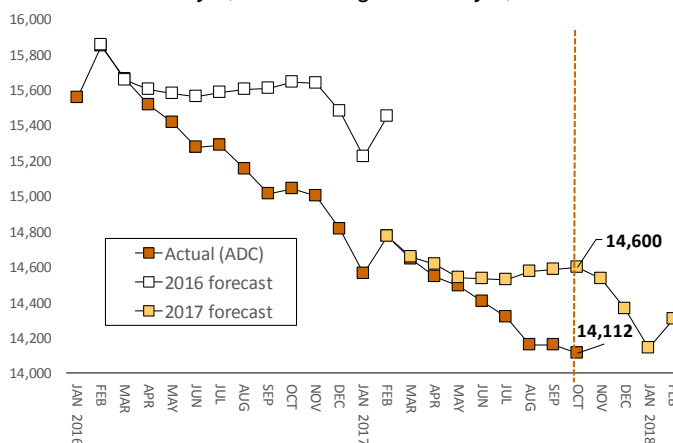


Chart 2 - Criminal justice, monthly counts and flows

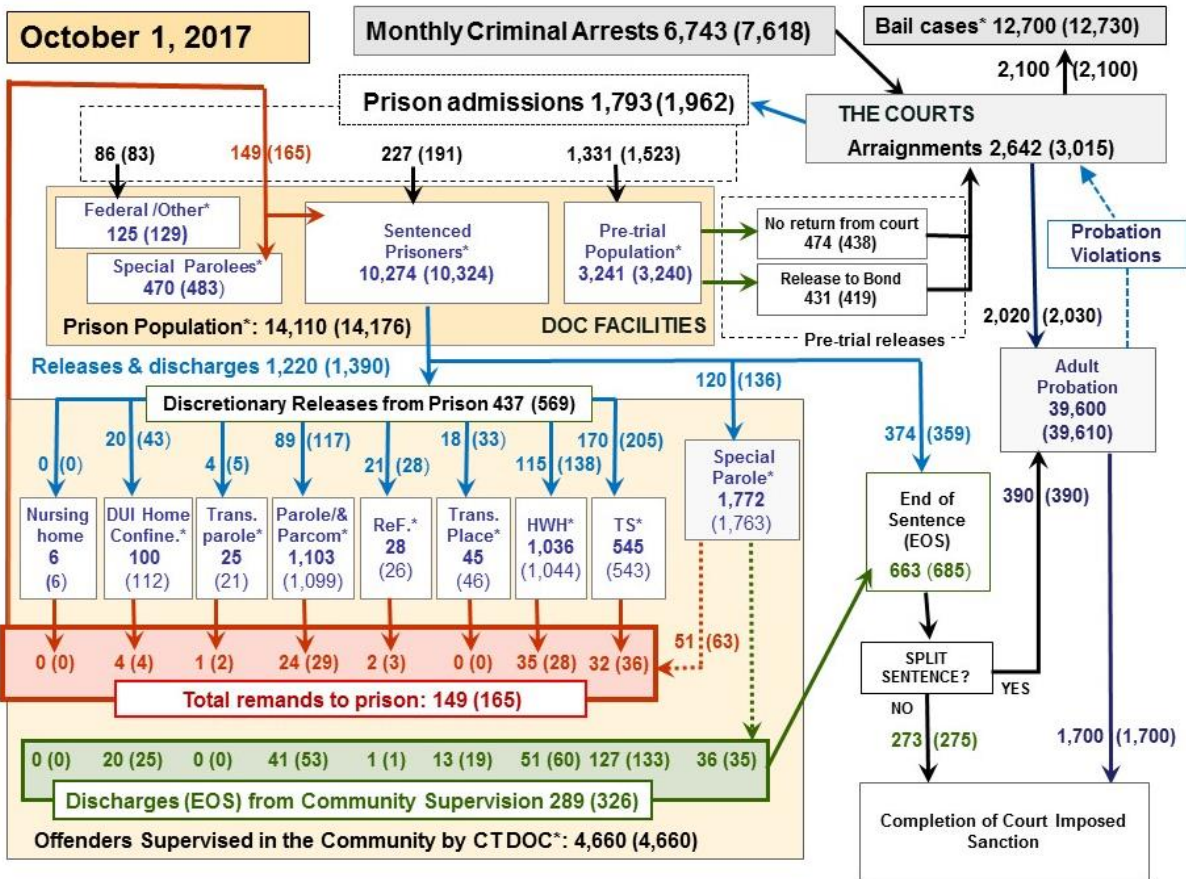
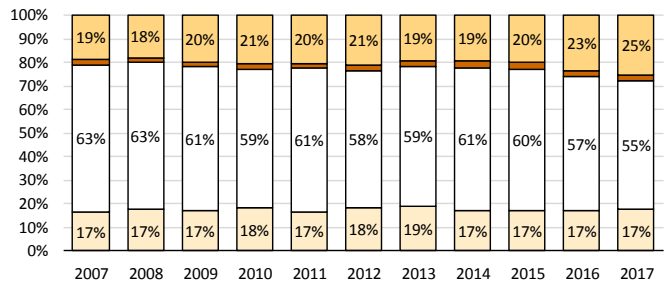
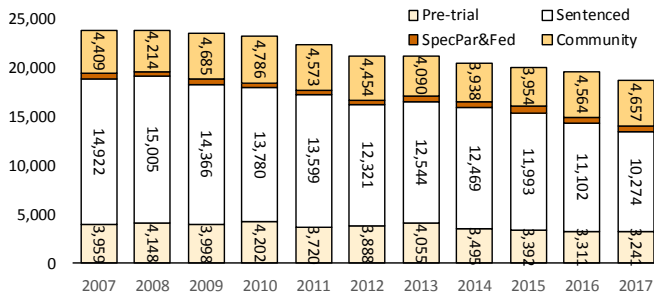


Chart 2 contains monthly operations data for September 2017 and daily counts reported on October 1, 2017. Asterisks (*) indicate the daily count on October 1st. Figures for last month are enclosed by parentheses. Sources: Arrests - OBTS, Court and probation data - CSSD, all other data - CT DOC. Note: Judicial Branch data this month are estimates.

Chart 2a – The DOC’s mission is slowly changing



Over the last 10 years, the total number of offenders in DOC custody, i.e., sentenced prisoners in facilities, pre-trial detainees in jails and offenders supervised in the community, has declined by 21%. The sentenced, imprisoned component of this population has dropped by 31%. The upshot: the percentage of sentenced prisoners now constitutes only 55% of all offenders in DOC custody. Ten years ago, they accounted for 63% of the DOC custody population. Is this change important?

From an outsider’s perspective, the custody of sentenced prisoners has always been central to the CT DOC’s sense of its own mission. Although the Department oversees jails, halfway houses and community supervision programs, these elements

were generally observed to be peripheral to the DOC’s core business, prison operations and the management and supervision of sentenced inmates.

We currently project that the mix of offenders in DOC custody will continue to gradually shift towards offenders in community-release programs and pre-trial detainees, and away from sentenced prisoners. This change will require the Department to give more urgency to addressing the needs of its pre-trial detainees and prisoners re-entering society.

In recent years the DOC has attempted to reorient the Department’s operations and priorities. More change will be required since the population under DOC custody is also changing.

Table 2 - First-of-month totals

	2017	2017	2017	2016	% Change	
	Aug. 1	Sept. 1	Oct. 1	Oct. 1	Monthly	Annual
DOC Facilities						
Federal/Other	133	129	125	149	-3.1%	-16.1%
Sentenced	10,448	10,324	10,274	11,102	-0.5%	-7.5%
Special Parole	478	483	470	448	-2.7%	4.9%
Pre-trial	3,145	3,240	3,241	3,311	0.0%	-2.1%
Total	14,204	14,176	14,110	15,010	-0.5%	-6.0%
DOC Community						
Transfer Parole	27	21	25	13	-	-
Parole/ Parcom Total	1,107	1,099	1,103	1,142	0.4%	-3.4%
Parole	942	936	943	962	0.7%	-2.0%
Parcom @ CT	165	163	160	180	-1.8%	-11.1%
Furlough	27	26	28	41	7.7%	-31.7%
Trans Placement	48	46	45	82	-2.2%	-45.1%
DUI/Home confine.	105	112	100	99	-10.7%	1.0%
Halfway House Total	1,030	1,044	1,036	984	-0.8%	5.3%
Comm Release	531	512	503	491	-1.8%	2.4%
TS	55	61	64	61	4.9%	4.9%
Parole	139	160	150	171	-6.3%	-12.3%
Transfer Parole	3	5	3	3	-	-
Special Parole	302	306	313	258	2.3%	21.3%
TS	533	543	545	606	0.4%	-10.1%
Nursing home	7	6	6	8	-	-
Special Parole	1,748	1,763	1,772	1,589	0.5%	11.5%
Total	4,632	4,660	4,660	4,564	0.0%	2.1%

Table 2a - Admissions, releases & discharges

	2016	2017	2017	2016	% Change	
	July	Aug.	Sept.	Sept.	Monthly	Annual
Admissions						
Federal/Other	67	83	86	95	3.6%	-9.5%
Remands	136	165	149	144	-9.7%	3.5%
DUI	5	6	5	6	-16.7%	-16.7%
Parole	29	29	24	30	-17.2%	-20.0%
Trans Plac/Furlough	0	3	2	3	-	-
HWH	23	28	35	9	25.0%	288.9%
TS	28	36	32	26	-11.1%	23.1%
Special Parole	51	63	51	70	-19.0%	-27.1%
New Sentence	203	191	227	285	18.8%	-20.4%
VOP	61	61	68	93	11.5%	-26.9%
Pre-trial	1298	1523	1331	1528	-12.6%	-12.9%
Total	1,704	1,962	1,793	2,052	-8.6%	-12.6%
Releases and discharges						
Transfer Parole	9	5	4	5	-20.0%	-
Parole	74	117	89	82	-23.9%	8.5%
Furlough	17	28	21	32	-25.0%	-34.4%
Trans. Placement	23	33	18	32	-45.5%	-43.8%
Home Confinement DU	29	43	20	40	-53.5%	-50.0%
HWH	186	138	115	153	-16.7%	-24.8%
TS	162	205	170	217	-17.1%	-21.7%
Special Parole	113	136	120	115	-11.8%	4.3%
Nursing home	0	0	0	0	-	-
End of Sentence	686	685	663	744	-3.2%	-10.9%
Total	1,299	1,390	1,220	1,420	-12.2%	-14.1%
Pre-trial Releases*						
From Court	486	538	474	551	-11.9%	-14.0%
Release to Bond	370	419	431	374	2.9%	15.2%

* Totals reflect events, not individual offenders

DOC - Community Release Unit (CRU)

Table 3 - Case reviews and release metrics

	Cases				Approval Rate
	Reviewed	Approved	Denied	Continued	
July	677	320	89	106	47%
August	806	378	119	134	47%
September	690	338	101	94	49%
Sept. '16	864	438	139	118	51%

Board of Pardons and Paroles

Table 4 - Parole hearings, new cases

	Parole Hearings	Paroles granted	Grant rate	Paroles granted, 2016	Paroles granted, 2015
July	177	87	49%	99	84
Aug.	147	70	48%	69	123
Sept.	153	80	52%	97	109

Table 4a - Other BOPP actions

	Reparole from revocation	Reparole from rescission	Closed interest cases	Special parole cases	Transfer parole cases
July	33	2	22	42	11
Aug.	53	4	19	34	7
Sept.	44	2	17	35	1
Sept '16	45	2	28	37	14

The pre-trial population

Table 5 - Bond ranges for pre-trial detainees

Bond amount	Aug 1, 2017	Sept. 1, 2017	Oct. 1, 2017	Oct. 1, 2016
Less than \$20K	530	558	547	601
\$20K to <\$50K	495	549	536	581
\$50K to <\$100K	727	728	716	745
\$100K or higher	1,498	1,532	1,521	1,531
Inmates w/bonds	3,250	3,367	3,320	3,458
Over \$1M	151	158	152	180

Table 5a - Pre-trial, weeks since admission

Weeks since last DOC admit	Aug. 1, 2017	Sept. 1, 2017	Oct. 1, 2017	Oct. 1, 2016
< 1 week	431	411	442	468
1 to < 3 weeks	324	404	357	457
3 to < 10 weeks	813	805	826	836
10 to < 30 weeks	901	929	883	914
30 wks or more	783	820	813	760
Pre-trial prisoners	3,252	3,369	3321	3435

Table 5b - Pre-trial admits, new offenders

	July 2017	Aug. 2017	Sept. 2017	Sept. 2017
Arraignments	2,789	3,015	2,642	2,978
Pre-trial Admits	1,298	1,523	1,331	1,528
New to DOC	342	397	339	412
% New	27%	26%	25%	27%

Court Support Services Division

Table 6 - The Jail Re-interview Program

	Pre-trial admissions	Offender interviews	Offenders released	Released last year
July	1,298	1,080	508	529
August	1,523	1,225	426	541
Sept.	1,331	1,088	392	441

Table 6a - Pre-trial bail and probation caseloads

	Pre-trial Bail Case Starts	Client Supv. Starts	Split Sentence Starts	Pre-trial bail cases
July	2,192	2,039	377	12,745
Aug.	2,100*	2,030*	390*	12,730*
Sept.	2,100*	2,020*	390*	12,700*
Sept. 2016	2,143	2,211	413	13,258

* CSSD estimates

Note: Figures published here are based on the operational data available at the time of publication. Data in subsequent issues may not agree.

Chart 3 – Prison population

First week of the month, avg. daily count (ADC)

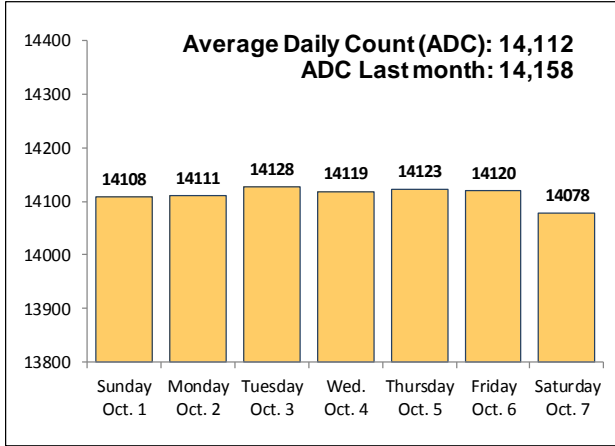


Chart 6 – Monthly DOC Admissions

August 2016 through September 2017

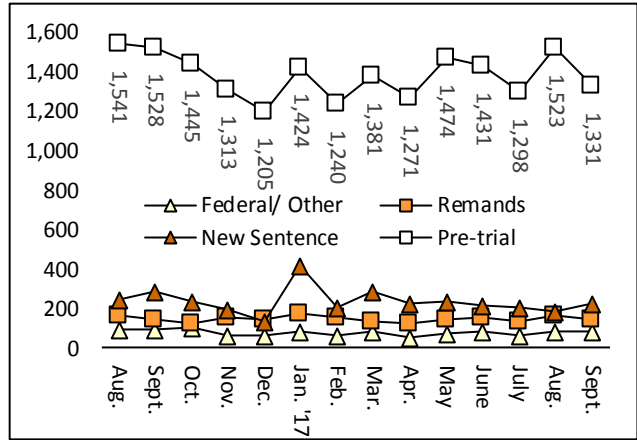


Chart 4 – Prison population, first-of-month

2015, 2016 and 2017

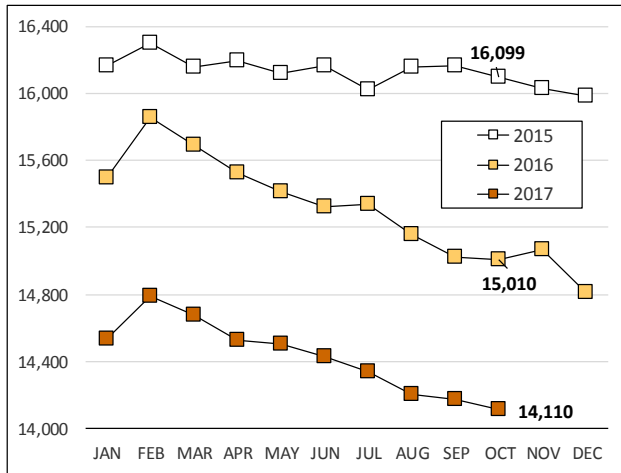


Chart 7 – Remands from community release

September 2017

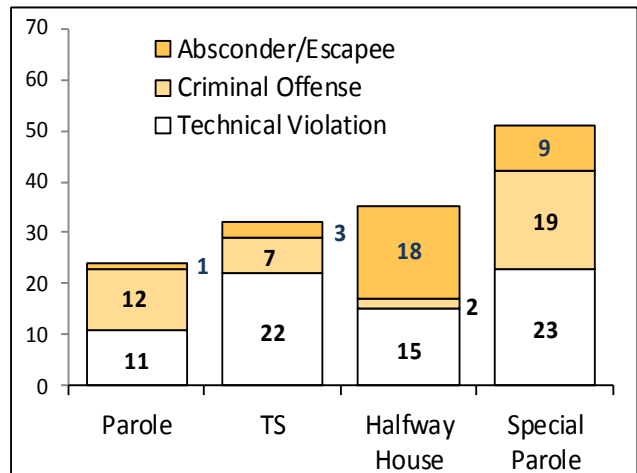


Chart 5 – Statewide criminal arrests

2016 and 2017

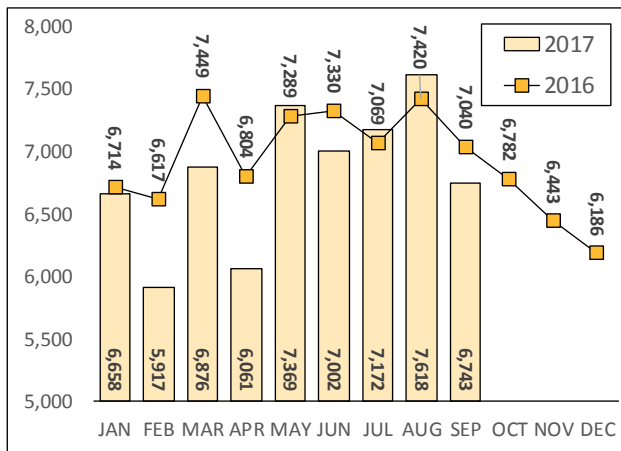
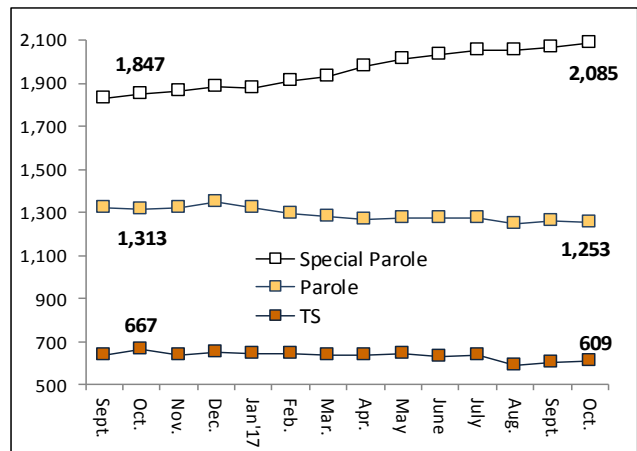


Chart 8 – DOC community supervision

September 1, 2016 through October 1, 2017



Note: Data for all charts, with the exception of Chart 5, was supplied by CT DOC. Data for Chart 5 are for new case starts in the state Offender-Based Tracking System (OBTS). Chart 8 includes offenders in halfway houses.