

# OPM - Criminal Justice Policy & Planning Division

## Monthly Indicators Report

### Highlights

- On April 1<sup>st</sup>, 14,523 prisoners were held in state prisons and jails. A year ago there were 15,527 prisoners in CT DOC facilities. While the total population declined by 6.5%, the sentenced portion of the population was down 8.1% (see Table 2).
- With the legislative session in full swing, this paper thought that it would be helpful to remind readers about some recent, and not-so-recent changes at the CT DOC.
- Prison and prison-facility closings:** Webster CI - closed January 2010 (600 beds), Gates CI - closed June 2011 (700 beds), Bergin CI – closed August 2011 (1,000 beds), Fairmont Building Bridgeport CC – closed July 2015 (200 beds), Niantic Annex – closed January 2016 (550 beds), the Q’s at Osborn CI – December 2016 (480 beds), Radgowski Annex – April 2017 (254 beds).
- Staffing changes:** Total DOC employees on December 1, 2008 – 7,081, Total DOC employees on April 1, 2017 – 5,491. Correction officers on December 1, 2008 – 4,132, Correction officers on April 1, 2017 3,576.
- Incarcerated population:** Total population on January 1: 19,438 (2008), 14,532 (2017). Sentenced population on January 1: 15,001 (2008), 10,076 (2017).
- This month, the Board of Pardons and Paroles (BOPP) revised its procedures for remands-to-custody. The changes include tightened timeframes within which evidence may be submitted by parole officers. The Board also strengthened the criteria it will use in the future for remands classified as “criminal” violations by DOC’s Parole office.

### Prison Population Forecast

Last month, the prison population shrank slightly faster than OPM predicted in its February 2017 forecast. The month of April is generally a point of inflection on annual trendlines of the prison population. In most years, the prison population declines from its peak in early February through the end of March. Between April and September it has become relatively uncommon to see the prison population either grow or contract dramatically.

Chart 1 illustrates the actual prison population trendline during 2016. Instead of flattening out during early spring, as predicted, the prison population kept dropping from its peak in February for the entire year. Chart 2a contains more discussion that may help to illustrate how anomalous 2016 actually was.

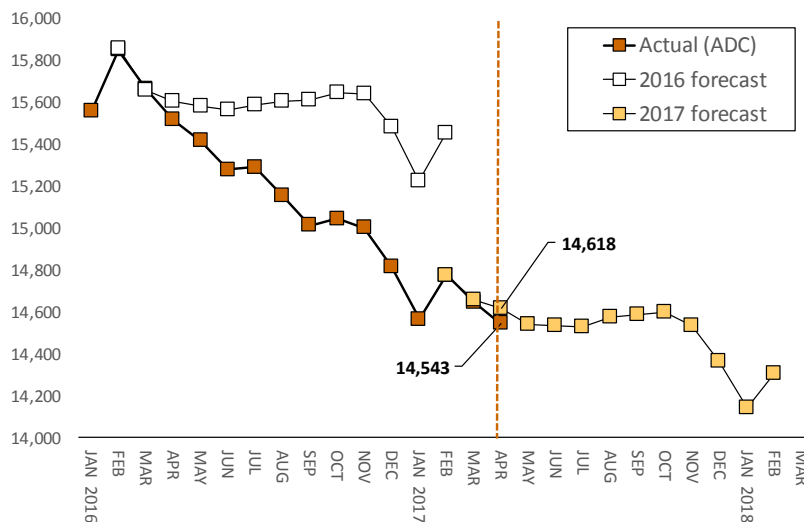
Although the prison population has been contracting since it peaked in February 2008, the rate of decline has not been steady. In most recent years the prison population has been shrinking at a rate of about 1% to 2% per year. In years when system operations are significantly modified, as they were 2012 and 2016, the sentenced prison population can be reduced by as much as 5% to 6% during a single year (see chart 2a).

TABLE 1 – Prison Population Forecast

	Avg. Daily Count	OPM 2017 Forecast	Inmate difference
JAN '17	14,565	-	-
FEB	14,776	14,776	-
MAR	14,646	14,658	12
APR	14,543	14,618	75
MAY	-	14,542	-
JUN	-	14,532	-
JUL	-	14,526	-
AUG	-	14,577	-
SEP	-	14,586	-
OCT	-	14,600	-
NOV	-	14,531	-
DEC	-	14,367	-
JAN '18	-	14,139	-
FEB	-	14,308	-

Avg. Daily Count (ADC) for 1st week of month

Chart 1 – Actual prison population against the OPM forecasts  
January 1, 2016 through February 1, 2018



## Chart 2 - Criminal justice, monthly counts and flows

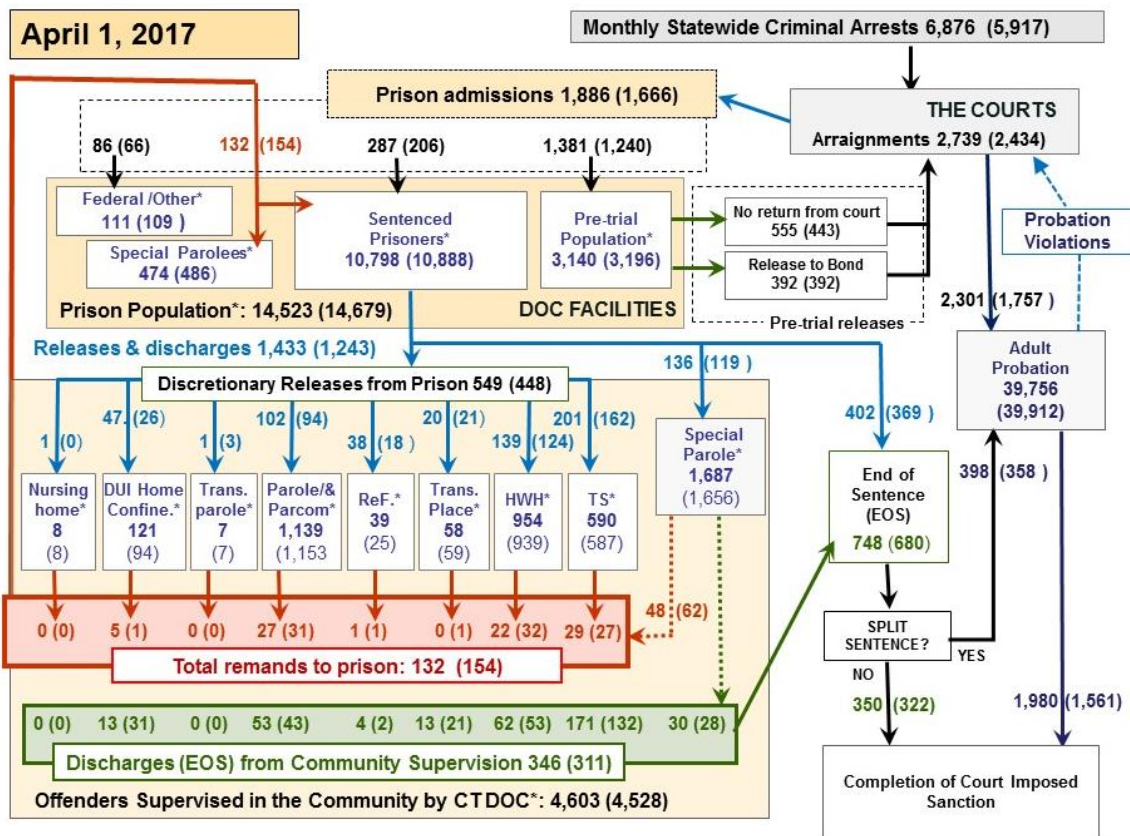
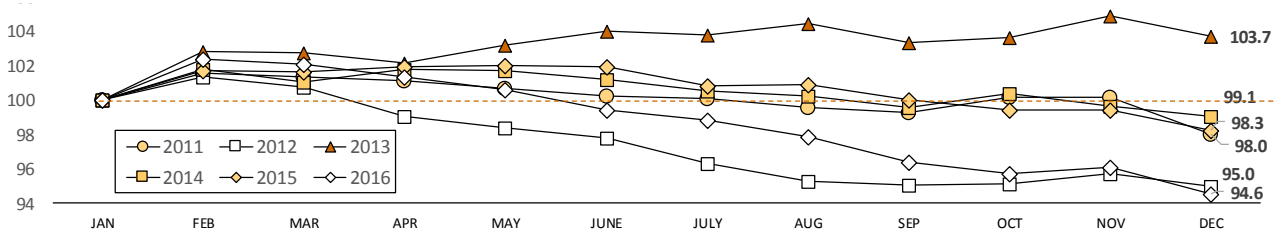


Chart 2 contains monthly operations data for March 2017 and daily counts reported on April 1, 2017. Asterisks (\*) indicate the daily count on March 1<sup>st</sup>. Figures for last month are enclosed by parentheses. Sources: Arrests - OBTS, Court and probation data - CSSD, all other data - CT DOC.

## Chart 2a – The impact of internal and external factors on the sentenced population



OPM studies the state's prison population with the same fervor that devoted racetrack regulars follow the ponies. The prison system, like the racing game, occasionally reveals hidden and mysterious patterns. Chart 2a plots the last six years of data for the sentenced prison population in CT. The data is indexed to the month of January. Indexing data is a useful way to compare the performance of different variables from the same starting point.

Over the last six years, the prison population declined in every year but one, 2013. During 2012 and 2016, the sentenced population contracted very quickly, by 5% and 5.4% respectively. In 2011, 2013 and 2014, the sentenced population declined at only a moderate annual pace of between 1% and 2%. This is notable because these differences in the changes to the size of the sentenced population were all linked to the specific conditions that were operating on the prison system at the time.

During 2012, the system felt the effect of the Risk Reduction Earned Credit (RREC) program begun in late-2011. The result, a 5% drop. In 2016, the efficiencies unleashed by the centralization of DOC's review and discretionary-release process, saw the prison population decline by 5.4%.

In contrast to 2011 and 2016, 2013 saw a confluence of factors at both DOC and the Board of Pardons and Paroles that resulted in many fewer prisoners making it out to community supervision programs on, or after, their eligibility dates. The result, the sentenced population in prison grew by 3.7% during the year.

With no exceptional forces pushing the population up or down during 2011, 2014 and 2015, the sentenced prison population ebbed slowly downward, following the general drop in arrests, prison admissions, lower remand rates and fewer, overall, returns to prison.

**Table 2 - First-of-month totals**

	2016	2017	2017	2016	% Change	
	Feb. 1	Mar. 1	Apr. 1	Apr. 1	Monthly	Annual
<b>DOC Facilities</b>						
Federal/Other	116	109	111	157	1.8%	-29.3%
Sentenced	10,955	10,888	10,798	11,755	-0.8%	-8.1%
Special Parole	474	486	474	493	-2.5%	-3.9%
Pre-trial	3,245	3,196	3,140	3,122	-1.8%	0.6%
<b>Total</b>	<b>14,790</b>	<b>14,679</b>	<b>14,523</b>	<b>15,527</b>	<b>-1.1%</b>	<b>-6.5%</b>
<b>DOC Community</b>						
Transfer Parole	9	7	7	0	-	-
Parole/ Parcom Total	1,177	1,153	1,139	1,107	-1.2%	2.9%
Parole	997	977	972	925	-0.5%	5.1%
Parcom @ CT	180	176	167	182	-5.1%	-8.2%
Furlough	27	25	39	34	56.0%	14.7%
Trans Placement	68	59	58	73	-1.7%	-20.5%
DUI/Home confine.	106	94	121	111	28.7%	9.0%
Halfway House Total	939	939	954	917	1.6%	4.0%
Comm Release	493	486	491	449	1.0%	9.4%
TS	61	50	46	44	-8.0%	4.5%
Parole	120	125	126	150	0.8%	-16.0%
Transfer Parole	0	0	0	0	-	-
Special Parole	265	278	291	274	4.7%	6.2%
TS	583	587	590	597	0.5%	-1.2%
Nursing home	8	8	8	8	-	-
Special Parole	1,644	1,656	1,687	1,428	1.9%	18.1%
<b>Total</b>	<b>4,561</b>	<b>4,528</b>	<b>4,603</b>	<b>4,275</b>	<b>1.7%</b>	<b>7.7%</b>

**Table 2a - Admissions, releases & discharges**

	2016	2016	2017	2016	% Change	
	Jan.	Feb.	Mar.	Mar.	Monthly	Annual
<b>Admissions</b>						
Federal/Other	88	66	86	82	30.3%	4.9%
Remands	173	154	132	161	-14.3%	-18.0%
DUI	6	1	5	3	400.0%	66.7%
Parole	37	31	27	26	-12.9%	3.8%
Trans Plac/Furlough	2	1	1	1	-	-
HWH	30	32	22	31	-31.3%	-29.0%
TS	30	27	29	44	7.4%	-34.1%
Special Parole	67	62	48	56	-22.6%	-14.3%
New Sentence	418	206	287	300	39.3%	-4.3%
VOP	106	67	82	104	22.4%	-21.2%
Pre-trial	1,424	1,240	1,381	1,403	11.4%	-1.6%
<b>Total</b>	<b>2,103</b>	<b>1,666</b>	<b>1,886</b>	<b>1,946</b>	<b>13.2%</b>	<b>-3.1%</b>
<b>Releases and discharges</b>						
Transfer Parole	4	3	1	0	-66.7%	-
Parole	102	94	102	125	8.5%	-18.4%
Furlough	21	18	38	29	111.1%	31.0%
Trans. Placement	22	21	20	23	-4.8%	-13.0%
Home Confinement DU	16	26	47	60	80.8%	-21.7%
HWH	123	124	139	151	12.1%	-7.9%
TS	187	162	201	203	24.1%	-1.0%
Special Parole	126	119	136	104	14.3%	30.8%
Nursing home	0	0	1	0	-	-
End of Sentence	691	680	748	786	10.0%	-4.8%
<b>Total</b>	<b>1,292</b>	<b>1,247</b>	<b>1,433</b>	<b>1,481</b>	<b>14.9%</b>	<b>-3.2%</b>
<b>Pre-trial Releases*</b>						
From Court	506	443	555	595	25.3%	-6.7%
Release to Bond	358	392	397	362	1.3%	9.7%

\* Totals reflect events, not individual offenders

**DOC - Community Release Unit (CRU)**

**Table 3 - Case reviews and release metrics**

	Cases				Approval
	Reviewed	Approved	Denied	Continued	Rate
Jan. '17	792	358	126	141	45%
Feb.	768	380	105	122	49%
Mar.	826	408	126	116	49%
Mar. '16	1,023	530	131	163	52%

**Board of Pardons and Paroles**

**Table 4 - Parole hearings, new cases**

	Parole Hearings	Paroles granted	Grant rate	Paroles granted, 2016	Paroles granted, 2015
Jan. '17	149	77	52%	102	81
Feb.	191	100	52%	75	88
Mar.	175	95	54%	93	67

**Table 4a - Other BOPP actions**

	Reparole from revocation	Reparole from rescission	Closed interest cases	Special parole cases	Transfer parole cases
Jan.	52	4	30	22	5
Feb.	38	4	21	36	1
Mar.	34	3	34	44	15
Mar.'17	48	7	23	43	0

**The pre-trial population**

**Table 5 - Bond ranges for pre-trial detainees**

Bond amount	Feb. 1, 2017	Mar. 1, 2017	Apr. 1, 2017	Apr. 1, 2016
Less than \$20K	574	530	532	503
\$20K to <\$50K	566	555	524	509
\$50K to <\$100K	737	723	730	637
\$100K or higher	1,437	1,444	1,424	1,537
Persons w/bonds	3,314	3,252	3,210	3,186
Over \$1M	145	149	150	161

**Table 5a - Pre-trial, weeks since admission**

Weeks since last DOC admit	Feb. 1, 2017	Mar. 1, 2017	Apr. 1, 2017	April 1, 2016
< 1 week	475	433	428	382
1 to < 3 weeks	371	308	332	363
3 to < 10 weeks	691	822	826	831
10 to < 30 weeks	1,012	926	884	918
30 wks or more	767	767	746	605
Pre-trial prisoners	3,316	3,256	3,216	3,189

**Table 5b - Pre-trial admits, new offenders**

	Jan. 2017	Feb. 2017	Mar. 2017	Mar. 2016
Arraignments	2,886	2,434	2,739	3,001
Pre-trial Admits	1,424	1,240	1,381	1,403
New to DOC	382	335	367	362
% New	27%	27%	27%	26%

**Court Support Services Division**

**Table 6 - The Jail Re-interview Program**

	Pre-trial admissions	Offender interviews	Offenders released	Released last year
Jan.'17	1,424	1,024	449	872
Feb.	1,240	899	390	776
March	1,381	1,022	481	856

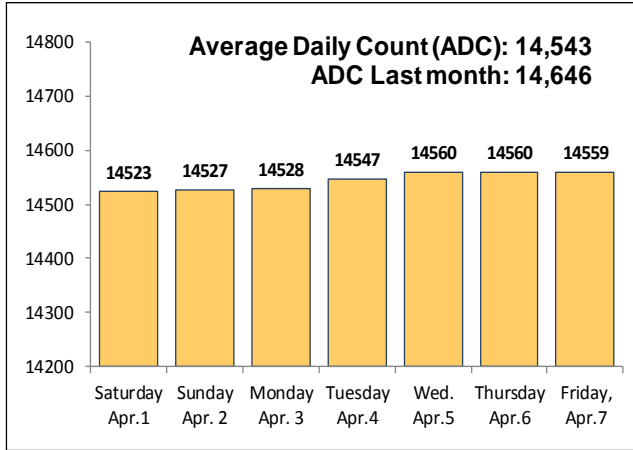
**Table 6a - Pre-trial bail and probation caseloads**

	Pre-trial Bail Case Starts	Client Supv. Starts	Split Sentence Starts	Pre-trial bail cases
Jan. '17	2,223	2,388	392	13,041
Feb.	1,902	1,757	358	12,750
Mar.	2,096	2,301	398	12,847
Mar.'16	2,477	2,391	403	13,617

Note: Figures published here are based on the operational data available at the time of publication. Data in subsequent issues may not agree.

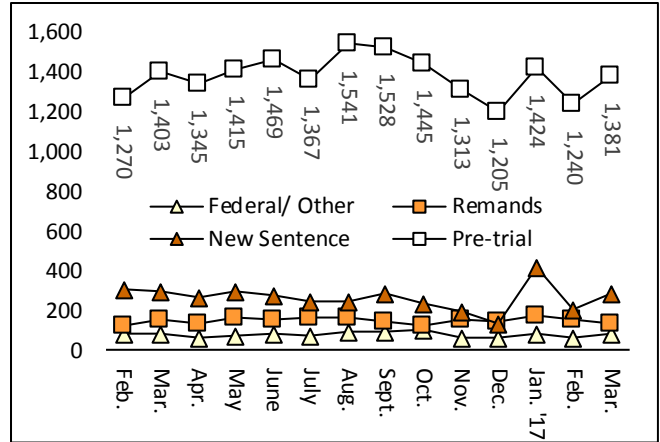
**Chart 3 – Prison population**

First week of the month, avg. daily count (ADC)



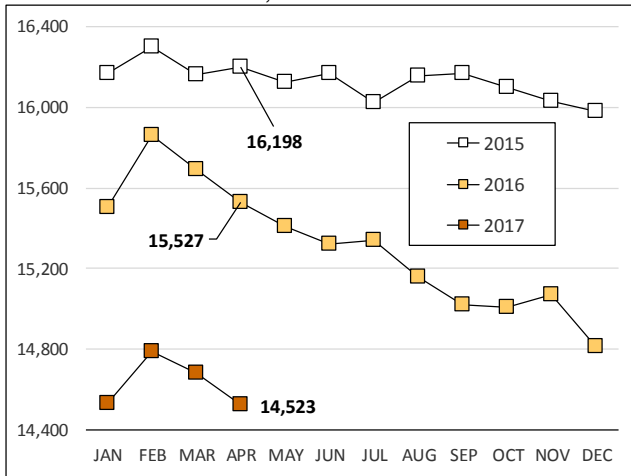
**Chart 6 – Monthly DOC Admissions**

February 2016 through March 2017



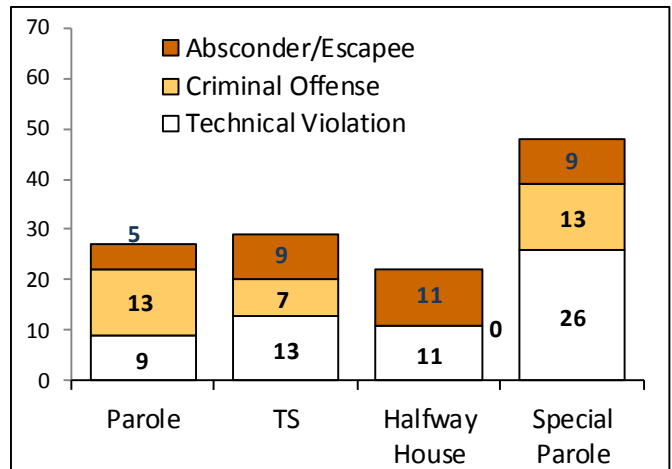
**Chart 4 – Prison population, first-of-month**

2015, 2016 and 2017



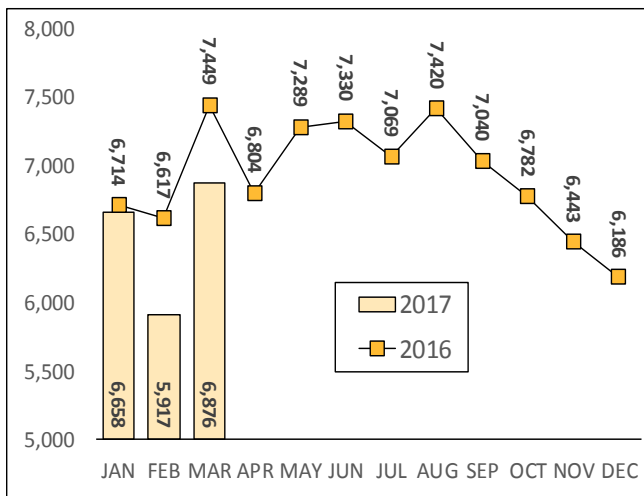
**Chart 7 – Remands from community release**

March 2017



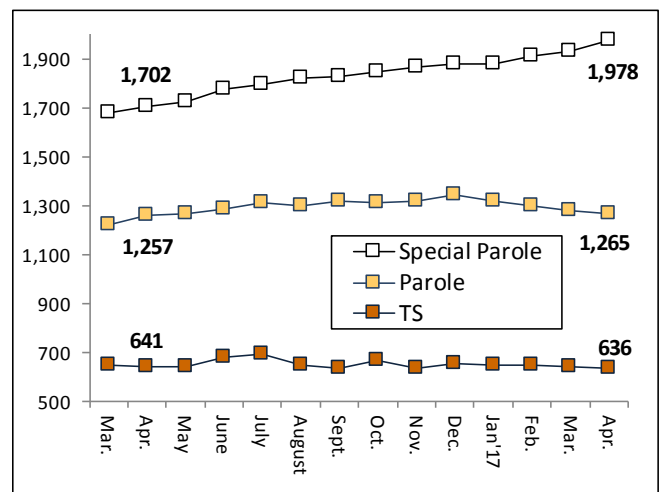
**Chart 5 – Statewide criminal arrests**

2016 and 2017



**Chart 8 – DOC community supervision**

March 1, 2016 through April 1, 2017



Note: Data for all charts, with the exception of Chart 5, was supplied by CT DOC. Data for Chart 5 are for new case starts in the state Offender-Based Tracking System (OBTS). Chart 8 includes offenders in halfway houses.