

# OPM - Criminal Justice Policy & Planning Division

## Monthly Indicators Report

### Highlights

- On October 1, 2015, 16,099 people were incarcerated in Connecticut prisons and jails. One year ago there were 16,610 prisoners in the state, a 3.1% drop..
- In September, the FBI released its Uniform Crime Data Report for 2014, revealing that violent crime in the state had dropped by 9.7% compared to 2013. Property crime was down by 3%. At a press conference, Gov. Malloy noted that crime rates were at a 50-year low and that his administration was focused on “reducing crime, not building more prisons.”
- The number of sentenced prisoners in the state dipped below 12,000 in September. The last time the state had fewer sentenced prisoners was in April 1997. The state’s sentenced population peaked in April 2003 at 15,608.
- This paper has tracked the growth of the special parole population for some time. On October 1, 2010, 1,269 offenders were on special parole status. This year, there were 2,055, a 62% increase.
- A quick analysis by CJPPD revealed that almost 50% of offenders discharged to special parole in 2012 and 2013 were back in prison within a year (see chart 2a). Most, of these returns-to-prison (75%) were identified as technical violations. While there may be sound reasons for such high remand rates, it certainly provides gist for further study.

**To have the Monthly Indicators Report sent to you electronically each month. Please email: [opm.mir@ct.gov](mailto:opm.mir@ct.gov) In the subject line write: Send Monthly**

### Prison Population Forecast

Sometimes prognosticators are right. In February, OPM projected that the DOC population on October 1 would be 16,117. As it happened, the average prison count during the first week of October was 16,094, just 23 prisoners under the forecast. Typically, this is the time for a forecaster to pack their trusty crystal ball and beat a path for a more lucrative venue. After all, the accuracy of the OPM forecast can only degrade from here.

Through its forecasts, OPM intends to set reasonable expectations for the size of the prison population, based on historical and operational data and assumptions regarding the current performance of the criminal justice system.

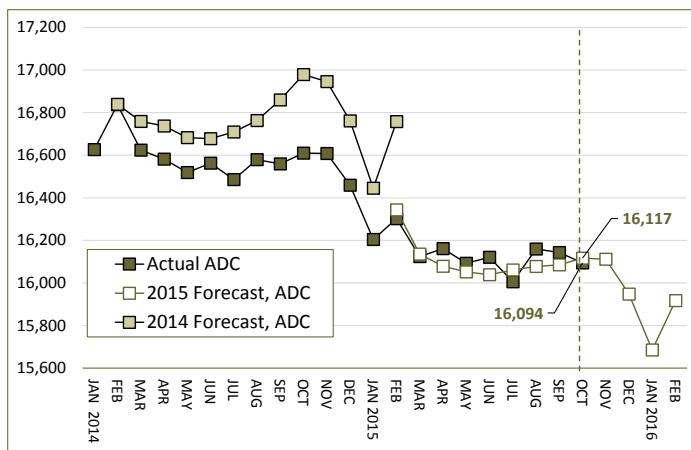
While accuracy is important, it is also very important to be able to identify what factors are at play when the population diverges from the forecast. During 2013, the prison population swelled, unexpectedly, by over 600 prisoners. Using the forecast as a benchmark, it was possible, in relatively short order, to identify a significant constriction in the normal flow of prisoners being released to community supervision programs. A drop in the number of parole hearings over several months increased the amount of time that many eligible offenders had to wait prior to being released to parole. While that situation could not be rectified immediately, stop-gaps measures and other adjustments were introduced to ease crowding and restore some normalcy to the release process.

**TABLE 1 – Prison Population Forecast**

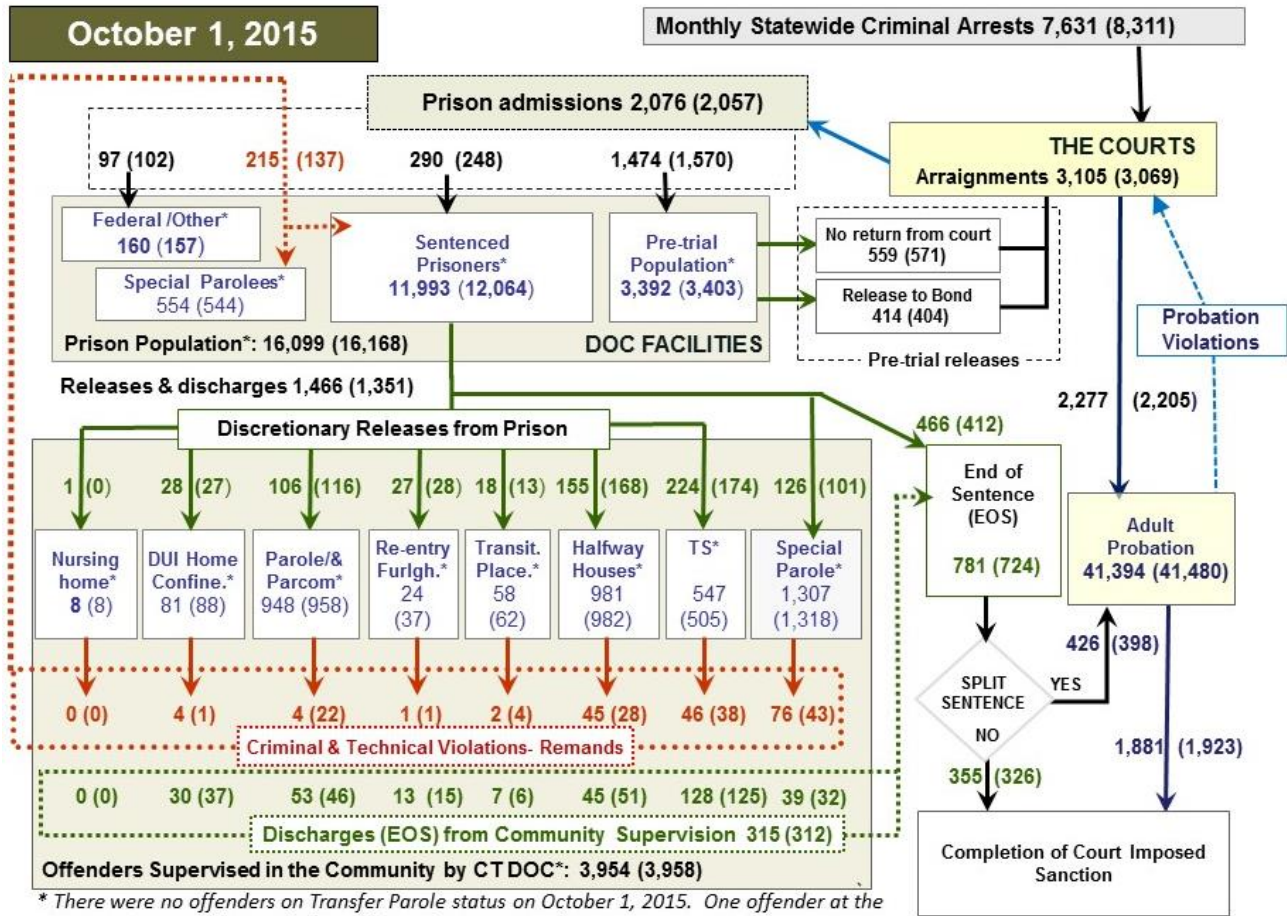
	Avg. Daily Count	OPM 2015 Forecast	Inmate difference
JAN '15	16,204	-	-
FEB	16,302	16,343	41
MAR	16,124	16,136	12
APR	16,161	16,079	(82)
MAY	16,093	16,052	(41)
JUN	16,121	16,039	(82)
JUL	16,006	16,061	55
AUG	16,160	16,078	(82)
SEP	16,143	16,085	(58)
OCT	16,094	16,117	23
NOV	-	16,112	-
DEC	-	15,948	-
JAN '16	-	15,686	-
FEB	-	15,917	-

*Avg. Daily Count (ADC) for 1st week of month*

**Chart 1 – Actual prison population against the OPM forecasts**  
January 1, 2014 through February 1, 2016



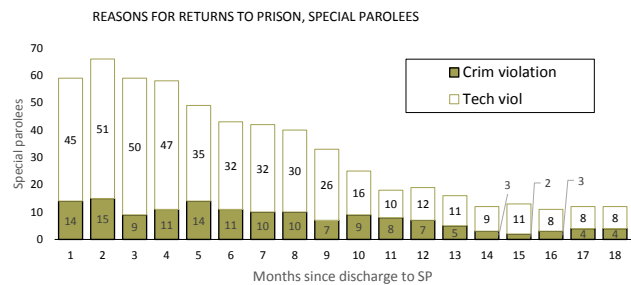
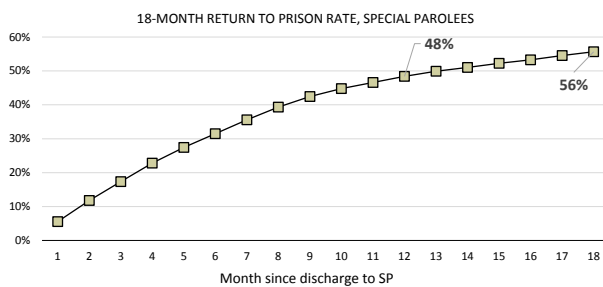
## Chart 2 - Criminal justice, monthly counts and flows



\* There were no offenders on Transfer Parole status on October 1, 2015. One offender at the West Street nursing home discharged EOS during September

Chart 2 contains monthly, operation data for September 2015 and daily counts reported on October 1, 2015. Asterisks (\*) indicate the daily count on October 1st. Last month's figures are enclosed by parentheses. Sources: Arrests - OBTS, Court and probation data - CSSD, all other data - CT DOC.

## Chart 2a – Recidivism among special parolees



A DOC inmate recently contacted OPM asking for recidivism data comparing probationers and special parolees. It appears that prisoners disagree about the efficacy and the relative merits and flaws associated with both types of supervision.

Since such an analysis does not currently exist, and because it seemed a reasonable question, OPM asked the DOC for data for all offenders who had been discharged to special parole between January 1, 2012 and December 31, 2013. A cohort of 1,060 offenders was quickly identified. The results of a preliminary analysis of return-to-prison rates were surprising and thought provoking.

Among offenders discharged to special parole during 2012 and 2013, 48% were returned to prison within a year. A large majority, 75%, were returned to prison for technical violations. Contrast this against the 34% of all offenders leaving prison in 2008 who returned within a year.

Over the last 5 years, the number of special parolees in prison on remand status has increased by 58%. On October 1, 2015, 546 special parolees were in prison, remanded. On that same day there were four prison facilities (Garner, Brooklyn, Northern and Walker RSMU) with fewer prisoners. OPM will take a more thorough look at this issue in the months ahead.

**Table 2 – The first-of-the-month totals**

	2015	2015	2015	2014	% Change	
	Aug.1	Sept. 1	Oct. 1	Oct. 1	Monthly	Annual
<b>DOC Facilities</b>						
Federal/Other	153	157	160	220	1.9%	-27.3%
Sentenced	12,171	12,064	11,993	12,469	-0.6%	-3.8%
Special Parole	567	544	554	426	1.8%	30.0%
Pre-trial	3,265	3,403	3,392	3,495	-0.3%	-2.9%
<b>Total</b>	<b>16,156</b>	<b>16,168</b>	<b>16,099</b>	<b>16,610</b>	<b>-0.4%</b>	<b>-3.1%</b>
<b>DOC Community</b>						
Transfer Parole	0	0	0	0	-	-
Parole/ Parcom Total	940	958	948	914	-1.0%	3.7%
Parole	768	786	774	754	-1.5%	2.7%
Parcom @ CT	172	172	174	160	1.2%	8.7%
Furlough	34	37	24	17	-	-
Trans Placement	70	62	58	105	-6.5%	-44.8%
DUI/Home confine.	98	88	81	84	-8.0%	-3.6%
Halfway House Total	963	982	981	991	-0.1%	-1.0%
Comm Release	613	603	589	738	-2.3%	-20.2%
TS	55	65	51	32	-21.5%	59.4%
Parole	104	121	133	62	9.9%	114.5%
Transfer Parole	0	0	0	0	-	-
Special Parole	191	103	208	159	101.9%	30.8%
TS Total	517	505	547	606	8.3%	-9.7%
Nursing home	8	8	8	7	-	-
Special Parole	1,301	1,318	1,307	1,214	-0.8%	7.7%
<b>Total</b>	<b>3,931</b>	<b>3,958</b>	<b>3,954</b>	<b>3,938</b>	<b>-0.1%</b>	<b>0.4%</b>

**Table 3 – Admissions, releases & discharges\***

	2015	2015	2015	2014	% Change	
	July	August	Sept.	Sept.	Monthly	Annual
<b>Admissions</b>						
Federal/Other	110	102	97	124	-4.9%	-21.8%
Remands	187	137	215	184	56.9%	16.8%
DUI	4	1	4	6	-	-
Parole	29	22	41	42	86.4%	-2.4%
Trans Plac/Furlough	3	5	3	3	-	-
HWH	36	28	45	34	60.7%	32.4%
TS	50	38	46	50	21.1%	-8.0%
Special Parole	65	43	76	48	76.7%	58.3%
New Sentence	306	248	290	289	16.9%	0.3%
VOP	106	85	92	87	8.2%	5.7%
Pre-trial	1,611	1,570	1,474	1,592	-6.1%	-7.4%
<b>Total</b>	<b>2,214</b>	<b>2,057</b>	<b>2,076</b>	<b>2,189</b>	<b>0.9%</b>	<b>-5.2%</b>
<b>Releases and discharges</b>						
Transfer Parole	0	0	0	0	-	-
Parole	100	116	106	65	-8.6%	63.1%
Furlough	31	28	27	20	-3.6%	35.0%
Trans. Placement	20	13	18	22	38.5%	-18.2%
Home Confinement DUI	29	27	28	24	3.7%	16.7%
HWH	180	168	155	190	-7.7%	-18.4%
TS	194	174	224	169	28.7%	32.5%
Special Parole	104	101	126	87	24.8%	44.8%
Nursing home	1	0	1	0	-	-
End of Sentence	809	724	781	710	7.9%	10.0%
<b>Total</b>	<b>1,468</b>	<b>1,351</b>	<b>1,466</b>	<b>1,287</b>	<b>8.5%</b>	<b>13.9%</b>
<b>Pre-trial Releases*</b>						
No return from Court	547	571	559	555	-2.1%	0.7%
Release to Bond	425	404	414	500	2.5%	-17.2%

\* Totals reflect events, not individual offenders

**Table 3a – Community Release Unit metrics**

	Reviewed	Approved	Denied	Continued	Approval Rate
June	892	439	203	157	49%
July	829	381	152	136	46%
Aug.	770	402	134	97	52%
Sept.	983	489	140	156	50%

**Board of Pardons and Paroles**

**Table 4 – Parole hearings, new cases**

	Parole Hearings	Paroles granted	Grant rate	Paroles granted, 2014	Paroles granted, 2013
July	153	84	55%	125	106
Aug.	196	123	63%	141	124
Sept.	196	109	56%	151	128

**Table 4a – Other Parole Board actions**

	Reparole from revocation	Reparole from rescission	Closed interest cases	Special parole cases
July	46	8	56	41
Aug.	47	3	18	37
Sept.	53	3	53	53

**The pre-trial population**

**Table 5 – Bond ranges for pre-trial detainees**

Bond amount	Aug. 1, 2015	Sept. 1, 2015	Oct. 1, 2015	Oct. 1, 2014
Less than \$20K	651	624	601	688
\$20K to <\$50K	535	577	581	633
\$50K to <\$100K	724	710	745	753
\$100K or higher	1,460	1,444	1,531	1,530
Offenders w/bonds	3,370	3,355	3,458	3,604
Over \$1M	180	173	180	196

**Table 5a – Pre-trial, weeks since admission**

Weeks since last DOC admit	Aug. 1, 2015	Sept. 1, 2015	Oct. 1, 2015	Oct. 1, 2014
< 1 week	511	461	485	516
1 to < 3 weeks	417	369	419	412
3 to < 10 weeks	877	961	889	1,005
10 to < 30 weeks	826	867	967	953
30 wks or more	742	704	703	707
Pre-trial prisoners	3,373	3,362	3,463	3,593

**Table 5b – Pre-trial admits, new offenders**

	June 2015	July 2015	August 2015	Sept. 2015
Arraignments	2,966	3,294	3,069	3,105
Pre-trial Admits	1,404	1,611	1,570	1,474
New to DOC	353	415	409	398
% New	25%	26%	26%	27%

**Court Support Services Division**

**Table 6 – The Jail Re-interview Program**

	Pre-trial admissions	Offender interviews	Offenders released	Releases last year
July	1,611	1,893	873	837
August	1,570	1,953	887	834
Sept.	1,474	1,892	911	897

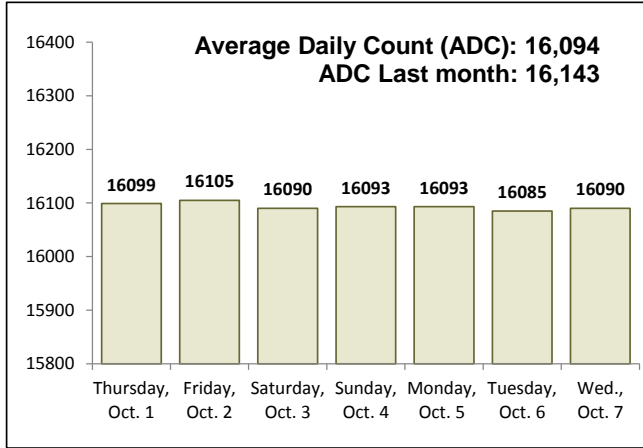
**Table 6a – Pre-Trial & split-sentence starts**

	Pre-trial Bail Case Starts	Client Supv. Starts	Split Sentence Starts
July	2,518	2,297	431
Aug.	2,440	2,205	398
Sept	2,450	2,277	426

Note: Figures published here are based on operational data available at publication. Data in subsequent issues may not agree.

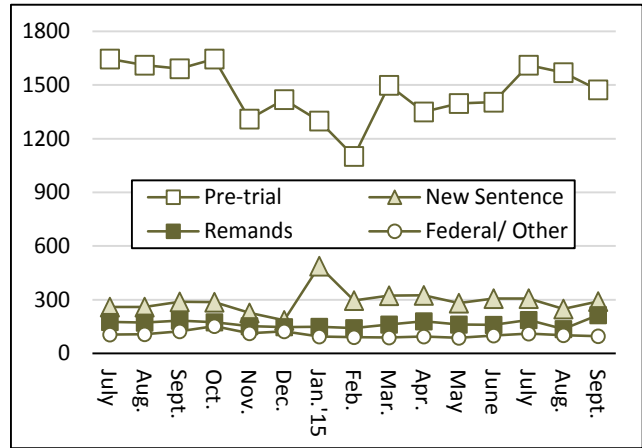
**Chart 3 – Prison population**

First week of the month, and ADC



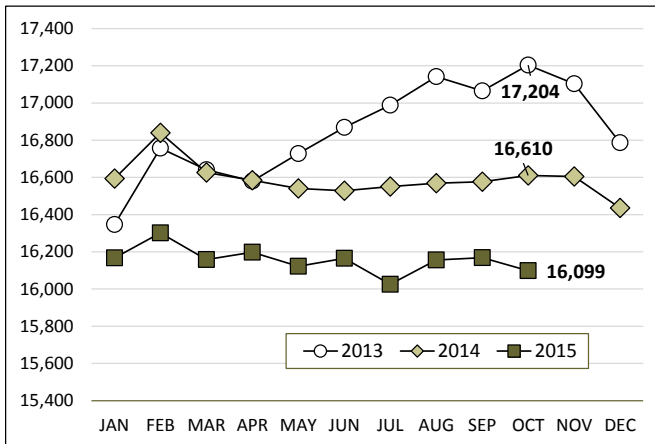
**Chart 6 – Monthly DOC Admissions**

July 2014 through September 2015



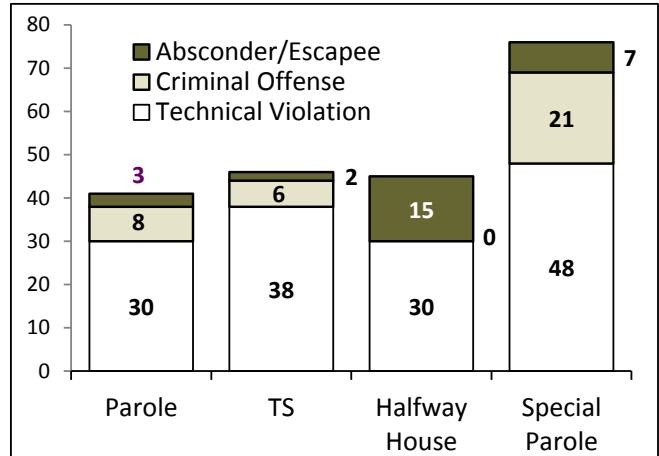
**Chart 4 – Prison population, first-of-month**

2013, 2014 and 2015



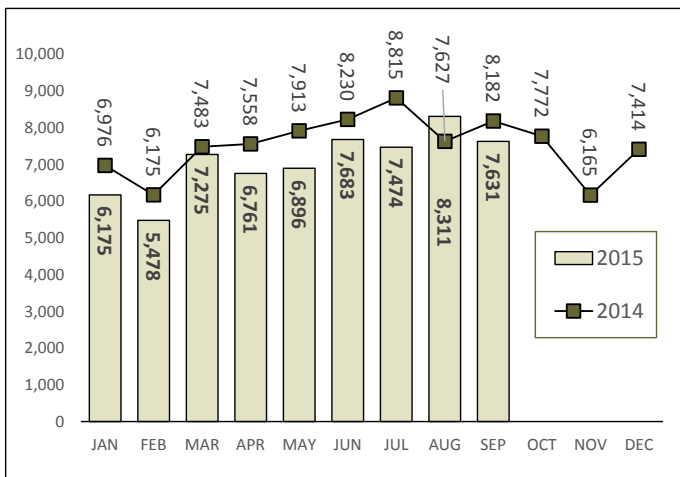
**Chart 7– Remands from community release**

September 2015



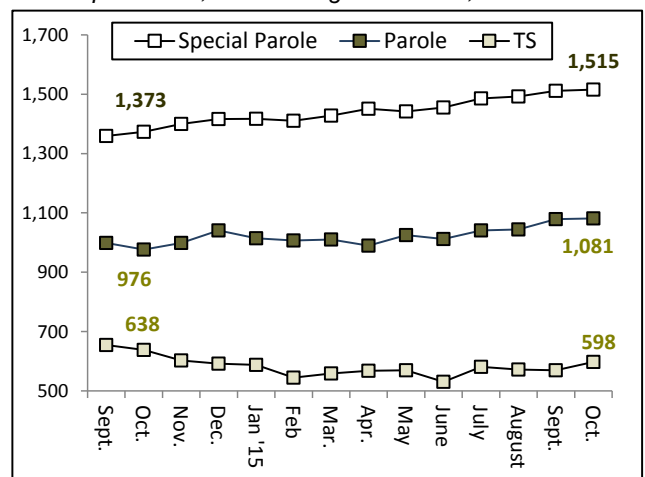
**Chart 5 – Statewide criminal arrests**

2014 and 2015



**Chart 8 – DOC community supervision**

September 1, 2014 through October 1, 2015



Note: Data for all charts, with the exception of Chart 5, was supplied by CT DOC. Data for Chart 5 is based on new case starts in the state Offender-Based Tracking System (OBTS). Chart 8 includes offenders in halfway houses.