

OPM - Criminal Justice Policy & Planning Division

Monthly Indicators Report

Highlights

- On July 1, 2015, 16,025 people were incarcerated in Connecticut prisons, a net reduction of 140 prisoners since June 1st. The last time the prison population was lower on July 1st was in 1998.
- Last month this paper observed that discretionary releases from prison to community supervision remained essentially flat during May despite the creation of the DOC's Community Release Unit (CRU). In June, that changed. The volume of releases increased in every category (see chart 2). TS releases rose by almost 70%, from 131 in May to 221 in June.
- The DOC Parole Office reports that the number of home investigations increased by 80% between May and June. These investigations are a pre-requisite for any potential release. They ensure that every offender has an approved sponsor and an appropriate place to live following release.
- Arrests rose by 11.4% in June (7,648) compared to May (6,896). Arraignments, however, only jumped by 2.2%, 2,903 to 2,966. Pre-trial prison admits in June (1,404) were only 0.5% higher than the May figure (1,396). Statewide arrests in June were down 6.6% from last year.
- On July 1st, 2015, the pre-trial population was down by 8% compared with last year's figure. The sentenced population was down by 2.6%. It is not all good news, however, the number of special parolees on remand status was up 35% (see table 2).

Please send comments to:
opm.mir@ct.gov

Prison Population Forecast

The prison population dipped below the 16,000 mark for several days in late-June and early-July. Several years ago, the idea of the prison population dropping to this level was almost unimaginable.

At the mid-point of the year, the prison population is tracking in close proximity with OPM's February projection. Over the last few years, much of the decline in the state's prison population could be explained by reduced volumes of people entering prison. Arrests have been down compared to previous years as have the overall number of pre-trial prison admissions.

What we may be witnessing now, with the creation of CRU, is more efficiency on the community release end of the prison system.

While some might argue that there are many people in prison who shouldn't be, it might be closer to the truth to say that almost everyone in prison deserves to be there; many just don't deserve, or need, to be there for as long as they are. If the prison system released every appropriate offender on the date they became release-eligibility, we might soon see the prison population hover in the mid-15,000s range.

TABLE 1 – Prison Population Forecast

	Avg. Daily Count	OPM 2015 Forecast	Inmate difference
JAN '15	16,204	-	-
FEB	16,302	16,343	41
MAR	16,124	16,136	12
APR	16,161	16,079	(82)
MAY	16,093	16,052	(41)
JUN	16,121	16,039	(82)
JUL	16,006	16,061	55
AUG	-	16,078	-
SEP	-	16,085	-
OCT	-	16,117	-
NOV	-	16,112	-
DEC	-	15,948	-
JAN '16	-	15,686	-
FEB	-	15,917	-

Avg. Daily Count (ADC) for 1st week of month

Chart 1 – Actual prison population against the OPM forecasts
January 1, 2014 through February 1, 2016

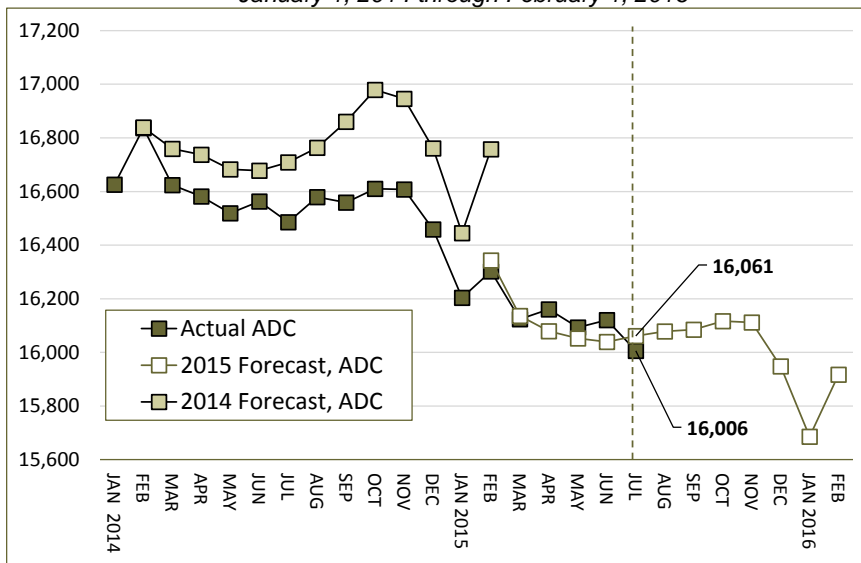
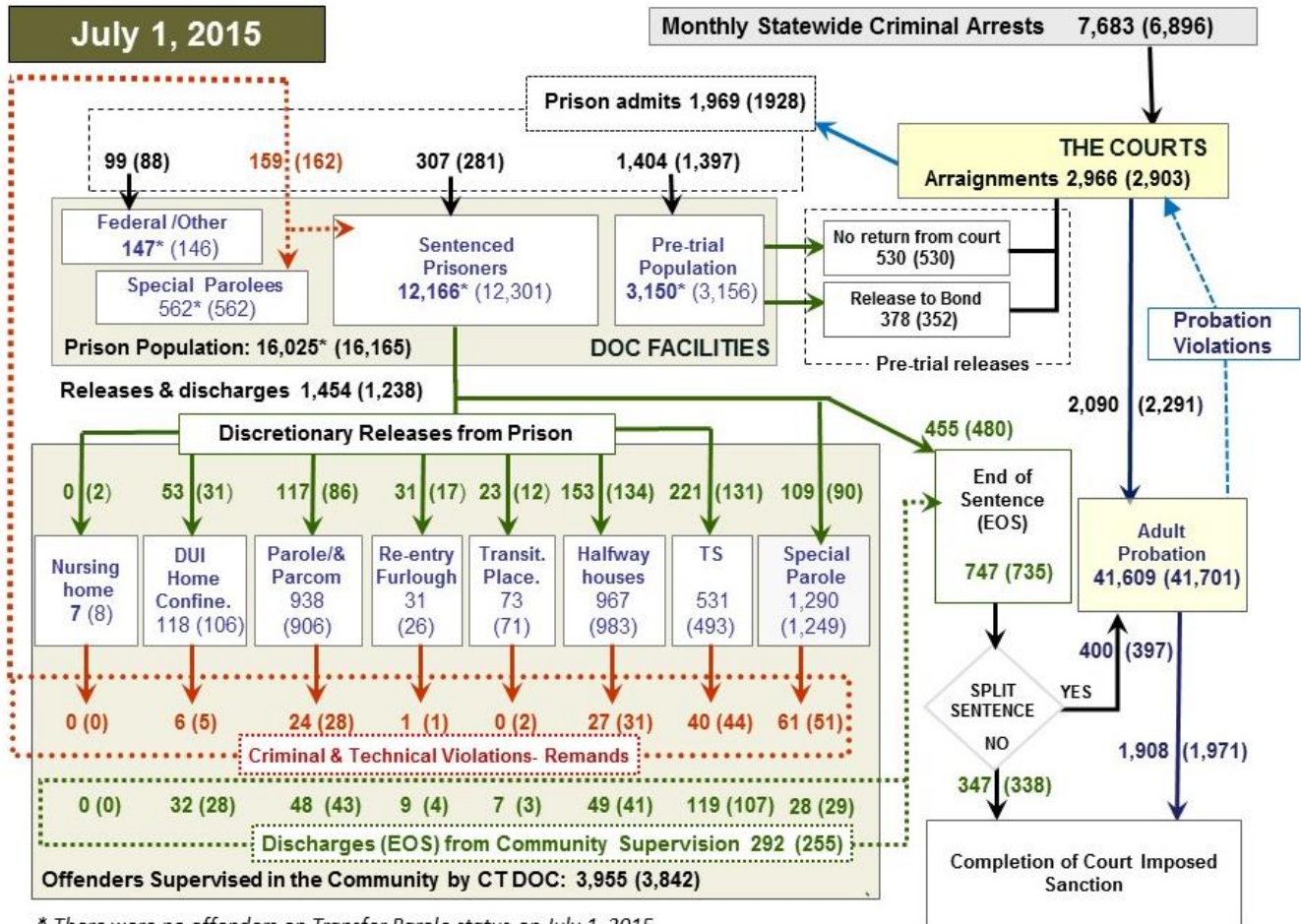


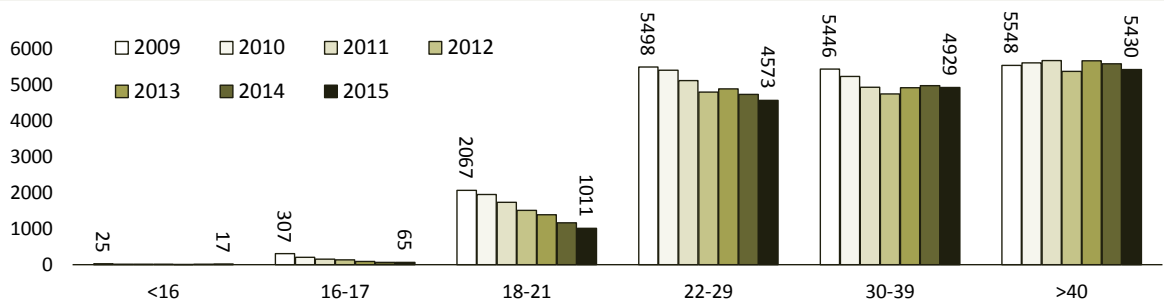
Chart 2 - Criminal justice, monthly counts and flows



* There were no offenders on Transfer Parole status on July 1, 2015.

Chart 2 contains monthly, operations data for the month of June 2015 and daily counts reported on July 1, 2015. Figures followed by asterisks (*) indicate the daily count on July 1st. Last month's figures are enclosed by parentheses. Sources: Arrests - OBTS, Court and probation data - CSSD, all other data - CT DOC.

Chart 2a – Age ranges of offenders incarcerated in CT, 2009 through 2015



A chart similar to the one shown above, covering the years 2009 through 2014, appeared in the July 2014 issue of this report. In that issue we noted that while the total prison population between 2009 and 2014 had dropped by 12.4%, the decline in the number of younger prisoners was even more pronounced.

We have updated last year's chart to include 2015. Between 2009 and 2015, the total prison population declined by 15.4%. While this drop in the total prison population is noteworthy, the declining number of younger prisoners is even more

dramatic. Between July 1, 2009 and July 1, 2015, the number of prisoners aged 18 to 21 fell from 2,067 to 1,011, an impressive 51.1% decrease. The number of prisoners between ages of 22 and 29 dropped by 16.8%. In contrast, the over-40 prison population declined by only 2.1%

These trends bode well for the state's criminal justice system as we move forward. Recidivism is generally most pronounced among younger offenders and the youth of an offender at the time of their first incarceration is a strong predictor of subsequent incarceration.

Table 2 – The first-of-the-month totals

	2015	2015	2015	2014	% Change	
	May 1	June 1	July 1	July 1	Monthly	Annual
DOC Facilities						
Federal/Other	137	146	147	212	0.7%	-30.7%
Sentenced	12,304	12,301	12,166	12,488	-1.1%	-2.6%
Special Parole	546	562	562	415	0.0%	35.4%
Pre-trial	3,135	3,156	3,150	3,436	-0.2%	-8.3%
Total	16,122	16,165	16,025	16,551	-0.9%	-3.2%
DOC Community						
Transfer Parole	0	0	0	0	-	-
Parole/ Parcom Total	924	906	938	959	3.5%	-2.2%
Parole	750	735	768	793	4.5%	-3.2%
Parcom @ CT	174	171	170	163	-0.6%	4.3%
Furlough	21	26	31	6	-	-
Trans Placement	71	71	73	150	2.8%	-51.3%
DUI/Home confine.	108	106	118	90	11.3%	31.1%
Halfway House Total	966	983	967	949	-1.6%	1.9%
Comm Release	631	633	618	697	-2.4%	-11.3%
TS	37	38	50	25	31.6%	100.0%
Parole	101	106	103	68	-2.8%	51.5%
Transfer Parole	0	0	0	0	-	-
Special Parole	197	206	196	159	-4.9%	23.3%
TS Total	533	493	531	602	7.7%	-11.8%
Nursing home	6	8	7	7	-	-
Special Parole	1,245	1,249	1,290	1,205	3.3%	7.1%
Total	3,874	3,842	3,955	3,968	2.9%	-0.3%

Table 3 – Admissions, releases & discharges*

	2015	2015	2015	2014	% Change	
	April	May	June	June	Monthly	Annual
Admissions						
Federal/Other	95	88	99	107	12.5%	-7.5%
Remands	180	162	159	183	-1.9%	-13.1%
DUI	0	5	6	3	-	-
Parole	25	28	24	26	-14.3%	-7.7%
Trans Plac/Furlough	6	3	1	4	-	-
HWH	45	31	27	37	-12.9%	-27.0%
TS	43	44	40	48	-9.1%	-16.7%
Special Parole	61	51	61	65	19.6%	-6.2%
New Sentence	325	281	307	265	9.3%	15.8%
VOP	100	91	92	69	1.1%	33.3%
Pre-trial	1,350	1,397	1,404	1,591	0.5%	-11.8%
Total	1,950	1,928	1,969	2,146	2.1%	-8.2%
Releases and discharges						
Transfer Parole	0	0	0	0	-	-
Parole	99	86	117	84	36.0%	39.3%
Furlough	20	17	31	7	82.4%	342.9%
Trans. Placement	18	12	23	27	91.7%	-14.8%
Home Confinement DUI	46	31	53	22	71.0%	140.9%
HWH	188	134	153	177	14.2%	-13.6%
TS	178	131	221	174	68.7%	27.0%
Special Parole	97	90	109	83	21.1%	31.3%
Nursing home	0	2	0	2	-	-
End of Sentence	741	735	1,454	1,341	97.8%	8.4%
Total	1,387	1,238	2,161	1,917	74.6%	12.7%

Pre-trial Releases*

No return from Court	534	530	530	552	0.0%	-4.0%
Release to Bond	443	352	378	504	7.4%	-25.0%

* Totals reflect events, not individual offenders

Table 3a – CRU, Cases reviewed

	Reviewed	Approved	Denied	Continued	Waived
April	808	425	194	108	52
May	840	438	209	119	26
June	892	439	203	157	37

Board of Pardons and Paroles

Table 4 – Parole hearings, new cases

	Parole Hearings	Paroles granted	Grant rate	Paroles granted, 2014	Paroles granted, 2013
Apr.	141	67	48%	73	113
May	134	83	62%	73	149
June	145	70	48%	98	133

Table 4a – Other parole actions

	Reparole from revocation	Reparole from rescission	Closed interest cases	Special parole cases
Apr.	51	7	79	27
May	35	2	38	25
June	46	5	20	53

The pre-trial population

Table 5 – Bond ranges for pre-trial detainees

Bond amount	May 1, 2015	June 1, 2015	July 1, 2015	July 1, 2014
Less than \$20K	547	566	558	611
\$20K to <\$50K	523	510	517	616
\$50K to <\$100K	677	664	721	719
\$100K or higher	1,450	1,410	1,458	1,483
Over \$1M	188	185	175	192
Offenders w/bonds	3197	3,150	3,254	3,429

Table 5a – Pre-trial, weeks since admission

Weeks since last DOC admit	May 1, 2015	June 1, 2015	July 1, 2015	July 1, 2014
< 1 week	458	464	469	412
1 to < 3 weeks	350	351	346	402
3 to < 10 weeks	771	773	882	953
10 to < 30 weeks	831	809	823	933
30 wks or more	790	754	735	730
Pre-trial prisoners	3,200	3,151	3,255	3,430

Table 5b – Pre-trial admits, new offenders

	Feb. 2015	Mar. 2015	Apr. 2015	May 2015	June 2015
Arraignments	2,229	3,101	2,798	2,903	2,966
Pre-trial Admits	1,101	1,498	1,350	1,397	1,404
New to DOC	301	368	338	357	353
% New	27%	25%	25%	26%	25%

Court Support Services Division

Table 6 – The Jail Re-interview Program

	Pre-trial admissions	Offender interviews	Offenders released	Releases last year
Apr.	1,350	1,790	827	761
May	1,397	1,729	832	827
June	1,404	1,751	778	841

Table 6a – Pre-Trial & split-sentence starts

	Pre-trial Bail Case Starts	Client Supv. Starts	Split Sentence Starts
Apr.	2,370	2,351	373
May	2,267	2,291	397
June	2,419	2,090	400

Note: Figures published here are based on operational data available at publication. Data in subsequent issues may not agree.

Chart 3 – Prison population

First week of the month, and ADC

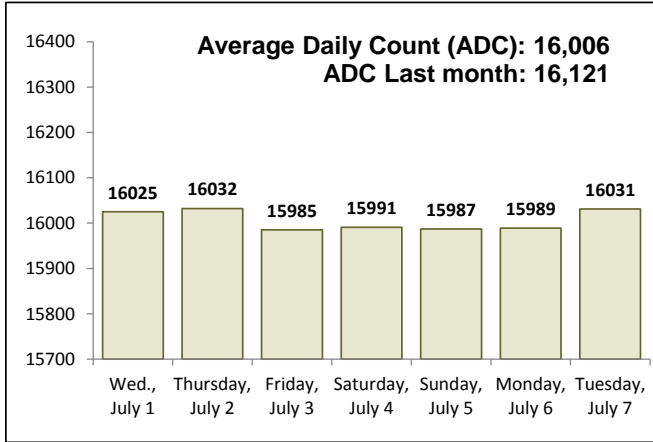


Chart 6 – Monthly DOC Admissions

April 2014 through June 2015

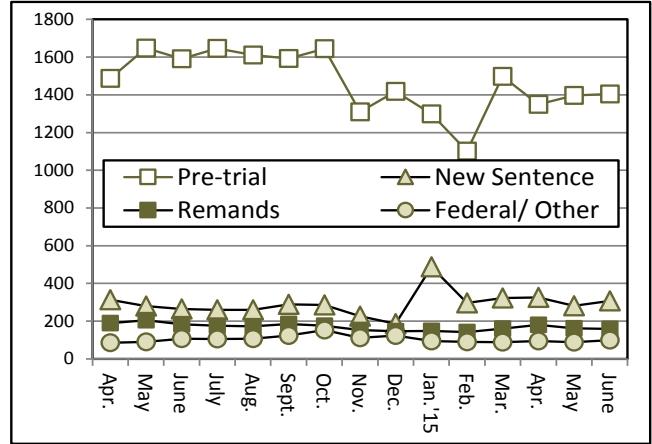


Chart 4 – Prison population, first-of-month

2013, 2014 and 2015

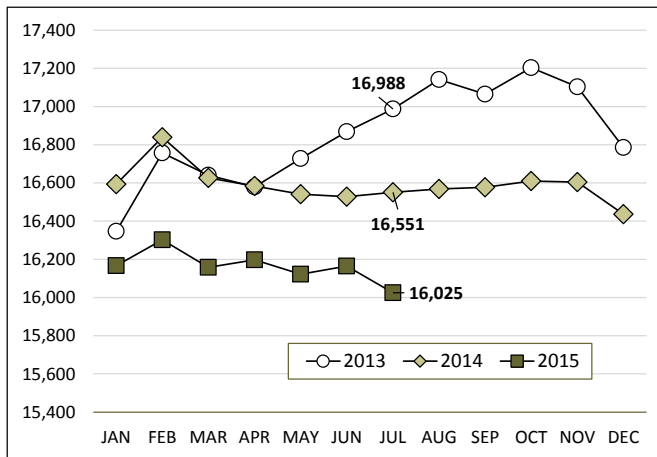


Chart 7 – Remands from community release

June 2015

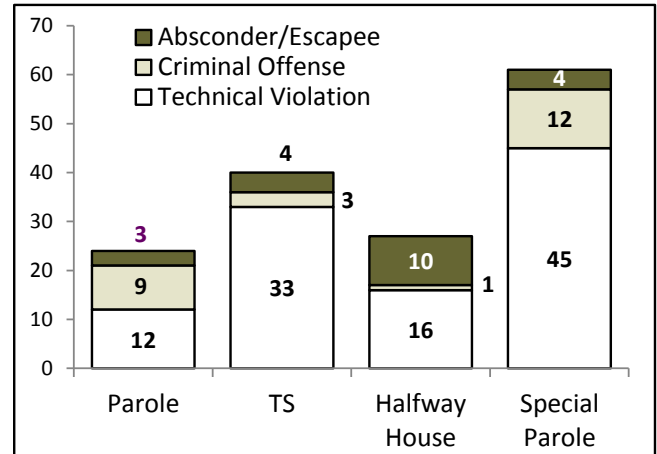


Chart 5 – Statewide criminal arrests

2014 and 2015

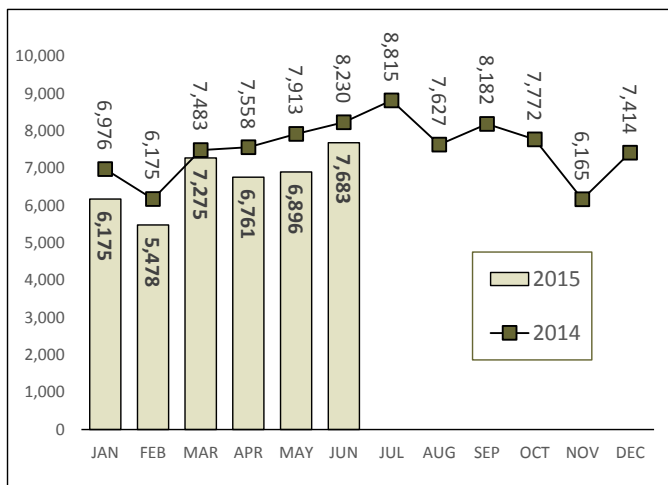
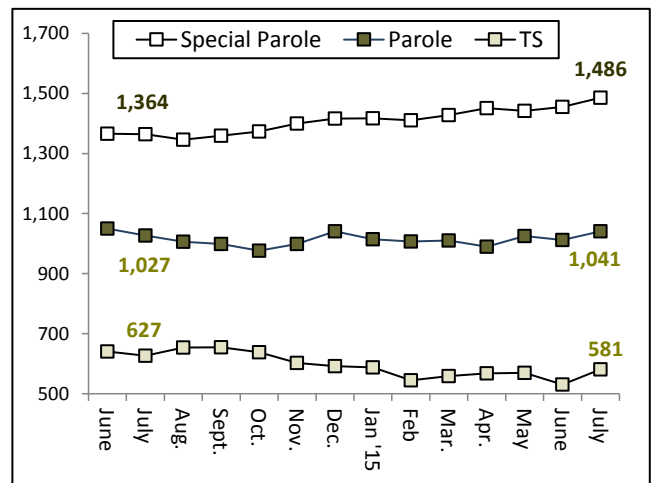


Chart 8 – DOC community supervision

June 1, 2014 through July 1, 2015



Note: Data for all charts, with the exception of Chart 5, was supplied by CT DOC. Data for Chart 5 is based on new case starts in the state Offender-Based Tracking System (OBTS). Chart 8 includes offenders in halfway houses.