

OPM - Criminal Justice Policy & Planning Division

Monthly Indicators Report

Highlights

- On April 1, 2015, 16,198 people were incarcerated in Connecticut prisons. Last year, on the same date, the prisons held 16,568.
- The prison population took a small bump upward during March. Although this increase was not anticipated, it may reflect a temporary workflow readjustment following the creation of a Central Re-Entry Unit (CRU) at DOC. This new unit is charged with centralizing and systematizing decision-making regarding discretionary releases at the Department. If implemented correctly, this unit could drive operational efficiencies throughout statewide re-entry processes.
- OPM's research unit recently published a recidivism study of offenders who were released and discharged in 2008. Although the original research was performed in 2013 and 2014, the report is being published now to make the findings more broadly available. The study is available on the OPM website.
- In 2011, about 1,300 offenders were released to parole. Over the next three years, approximately 65% completed their sentences on parole, 24% were remanded to prison for technical and criminal violations (see chart 2a).
- In April, Governor Malloy and Commissioner Semple will host a ceremony to dedicate the opening of the Cybulski Community Reintegration Center in Enfield. The Center is intended to focus program and service delivery at one facility to improve outcomes.

Please send comments to:
opmmir@ct.gov

Prison Population Forecast

The average daily count (ADC) for the the first week of April crept up by 37 prisoners from last month's figure. As a result the prison population exceeded OPM's projection by 82 offenders. At this point, there is no cause for alarm.

In recent years, with declining admissions, the only way the prison population has increased is through constrictions in the volume of offenders being released to community programs. There is no single cause to explain these slowdowns. Some are structural and systemic, others are ephemeral. Some slowdowns can be tracked back to processes at specific facilities; others appear to occur at the community supervision of the re-entry trail.

	Avg. Daily Count	OPM 2015 Forecast	Inmate difference
JAN '15	16,204	-	-
FEB	16,302	16,343	41
MAR	16,124	16,136	12
APR	16,161	16,079	(82)
MAY	-	16,052	-
JUN	-	16,039	-
JUL	-	16,061	-
AUG	-	16,078	-
SEP	-	16,085	-
OCT	-	16,117	-
NOV	-	16,112	-
DEC	-	15,948	-
JAN '16	-	15,686	-
FEB	-	15,917	-

Avg. Daily Count (ADC) for 1st week of month

With the creation of a single unit, tasked with systematizing re-entry decision-making in the state, the DOC should be able to assert more control over the processes that govern discretionary releases. If implemented correctly, the Central Re-entry Unity could insure more consistent judgement regarding releases, and help to identify efficiencies and drive improvements that could move appropriate offenders out of prison and into community supervision settings in a more expeditious manner. The result of these efforts could be a lower overall prison count.

Chart 1 – Actual prison population against the OPM forecasts
January 1, 2014 through February 1, 2016

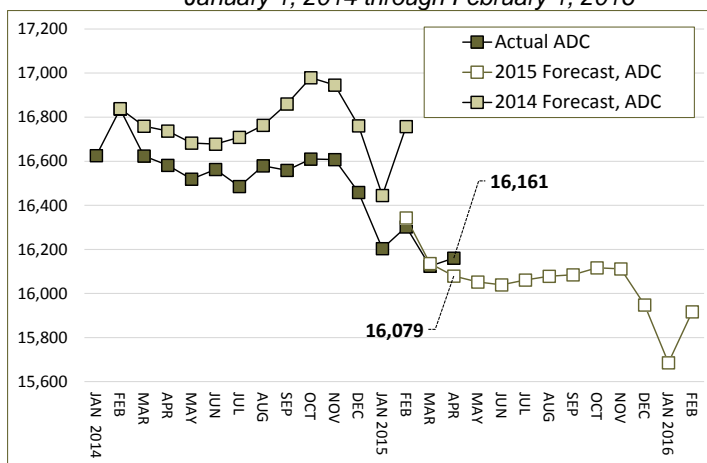
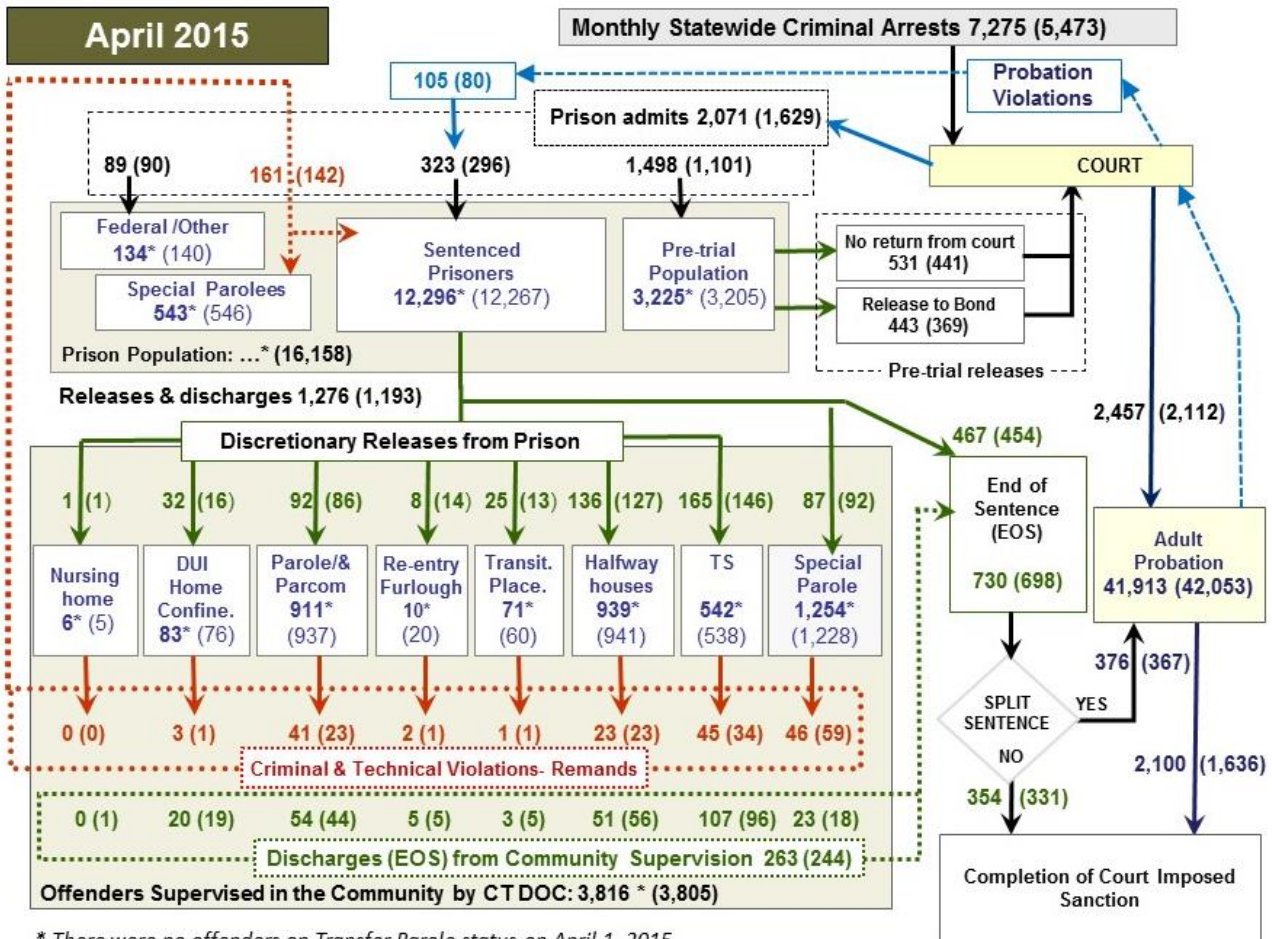


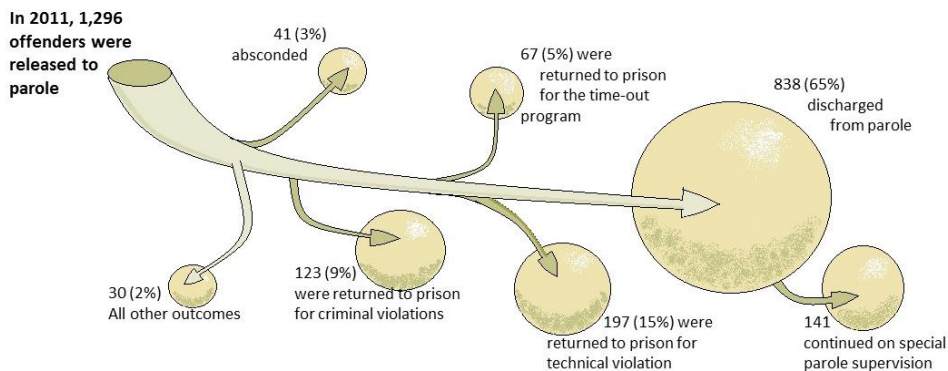
Chart 2 - Criminal justice, monthly counts and flows



* There were no offenders on Transfer Parole status on April 1, 2015.

Chart 2 contains monthly, operations data for March 2015 and daily counts reported on April 1, 2015. Figures followed by asterisks (*) indicate the daily count on April 1st. Last month's figures are enclosed by parentheses. Sources: Arrests - OBTS, Court and probation data - CSSD, all other data - CT DOC.

Chart 2a – Parole outcomes within 3 years



In 2011, 1,296 offenders were released from prisons and halfway houses to parole. Over the next three years, 65% of these individuals successfully discharged the remainder of their sentences in a community setting. This represents a solid improvement over 2008, when only 57% completed the terms of their parole successfully. Technical violations were also down between 2008 and 2011, from 23% to 15%.

Of the 197 parolees who were remanded to prison for technical violations in 2011, 22 were returned facing new criminal charges. Of the remaining 175 technical violators, 164 served out the remainder of their sentences in prison; only 11 – or 6% of the total – ever made it back into a community supervision setting. In fact a higher percentage of criminal violators, in 2011, (15%) made it back into the community. This analysis does not include TS, halfway house or other releases.

Table 2 – The first-of-the-month totals

	2015	2015	2015	2014	% Change	
	Feb.1	Mar. 1	April 1	April 1	Monthly	Annual
DOC Facilities						
Federal/Other	223	140	134	177	-4.3%	-24.3%
Sentenced	12,273	12,267	12,296	12,642	0.2%	-2.7%
Special Parole	446	546	543	383	-0.5%	41.8%
Pre-trial	3,360	3,205	3,225	3,366	0.6%	-4.2%
Total	16,302	16,158	16,198	16,568	0.2%	-2.2%
DOC Community						
Transfer Parole	0	0	0	0	-	-
Parole/ Parcom Total	929	937	911	999	-2.8%	-8.8%
Parole	762	769	746	838	-3.0%	-11.0%
Parcom @ CT	167	168	165	161	-1.8%	2.5%
Furlough	17	20	10	17	-	-
Trans Placement	62	60	71	125	18.3%	-43.2%
DUI/Home confine.	82	76	83	107	9.2%	-22.4%
Halfway House Total	972	941	939	990	-0.2%	-5.2%
Comm Release	677	647	637	725	-1.5%	-12.1%
TS	23	21	26	29	23.8%	-10.3%
Parole	78	73	79	70	8.2%	12.9%
Transfer Parole	0	0	0	0	-	-
Special Parole	194	200	197	166	-1.5%	18.7%
TS Total	522	538	542	589	0.7%	-8.0%
Nursing home	6	5	6	7	-	-
Special Parole	1,216	1,228	1,254	1,198	2.1%	4.7%
Total	3,806	3,805	3,816	4,032	0.3%	-5.4%

Table 3 – Admissions, releases & discharges*

	2015	2015	2015	2014	% Change	
	Jan.	Feb.	Mar.	Mar.	Monthly	Annual
Admissions						
Federal/Other	95	90	89	97	-1.1%	-8.2%
Remands	148	142	161	179	13.4%	-10.1%
DUI	7	1	3	8	-	-
Parole	29	23	41	30	78.3%	36.7%
Trans Plac/Furlough	1	2	3	4	-	-
HWH	20	23	23	33	0.0%	-30.3%
TS	25	34	45	49	32.4%	-8.2%
Special Parole	66	59	46	55	-22.0%	-16.4%
New Sentence	488	296	323	321	9.1%	0.6%
VOP	133	80	105	95	31.3%	10.5%
Pre-trial	1,299	1,101	1,498	1,443	36.1%	3.8%
Total	2,030	1,629	2,071	2,040	27.1%	1.5%
Releases and discharges						
Transfer Parole	0	0	0	0	-	-
Parole	73	86	92	77	7.0%	19.5%
Furlough	16	14	8	19	-42.9%	-57.9%
Trans. Placement	24	13	25	32	92.3%	-21.9%
Home Confinement DUI	29	16	32	42	100.0%	-23.8%
HWH	174	127	136	180	7.1%	-24.4%
TS	134	146	165	170	13.0%	-2.9%
Special Parole	90	92	87	96	-5.4%	-9.4%
Nursing home	0	1	1	3	-	-
End of Sentence	793	698	730	790	4.6%	-7.6%
Total	1,333	1,193	1,276	1,409	7.0%	-9.4%
Pre-trial Releases*						
No return from Court	487	441	531	563	20.4%	-5.7%
Release to Bond	350	369	443	440	20.1%	0.7%

* Totals reflect events not individuals.

Board of Pardons and Paroles

Table 4 – Parole hearings, new cases

	Parole Hearings	Paroles granted	Grant rate	Paroles granted, 2014	Paroles granted, 2013
Jan. '15	155	81	52%	96	122
Feb.	161	88	55%	103	121
Mar.	149	67	45%	78	113

Table 4a – Other parole actions

	Reparole from revocation	Reparole from rescission	Closed interest cases	Special parole cases
Jan. '15	28	9	29	62
Feb.	22	7	29	41
Feb.	31	3	23	40

Pre-trial detainees

Table 5 – Bond ranges for pre-trial detainees

Bond amount	Feb. 1, 2015	Mar. 1, 2015	April 1, 2015	Apr. 1, 2014
Less than \$20K	613	560	573	574
\$20K to < \$50K	555	508	558	552
\$50K to < \$100K	730	678	687	716
\$100K or higher	1,541	1,495	1,473	1,602
Over \$1M	185	181	186	209
Offenders w/bonds	3,439	3,241	3,291	3,444

Table 5a – Pre-trial offenders, weeks since admission

Weeks since last DOC admit	Feb. 1, 2015	Mar. 1, 2015	April 1, 2015	Apr. 1, 2014
< 1 week	401	422	435	453
1 to < 3 weeks	347	297	391	400
3 to < 10 weeks	782	709	731	806
10 to < 30 weeks	1,153	1,037	943	950
30 wks or more	759	781	797	835
Pre-trial prisoners	3,442	3,246	3,297	3,444

Table 5b – Pre-trial admits, new offenders

	Dec. 2014	Jan. 2015	Feb. 2015	Mar 2015
Pre-trial Admits	1,418	1,299	1,101	1,498
New to DOC	377	319	301	368
% New	27%	25%	27%	25%

Court Support Services Division

Table 6 – The Jail Re-interview Program

	Pre-trial admissions	Offender interviews	Offenders released	Releases last year
Jan. '15	1,299	1,341	888	722
Feb.	1,101	1,099	753	642
Mar.	1,498	1,514	868	792

Table 6a – Pre-Trial & split-sentence starts

	Pre-trial Bail Case Starts	Client Supv. Starts	Split Sentence Starts
Jan. '15	2,166	2,479	402
Feb.	1,978	2,112	367
Mar.	2,483	2,457	376

Note: Figures published here are based on operational data available at publication. Data in subsequent issues may not agree.

Chart 3 – Prison population

First week of the month, and ADC

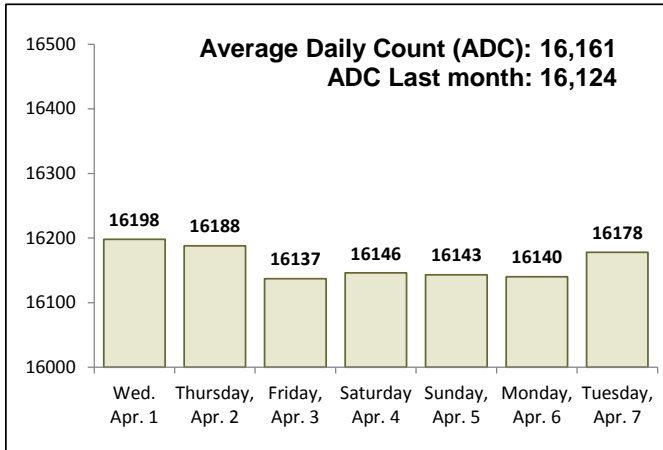


Chart 6 – Monthly DOC Admissions

January '14 through March 2015

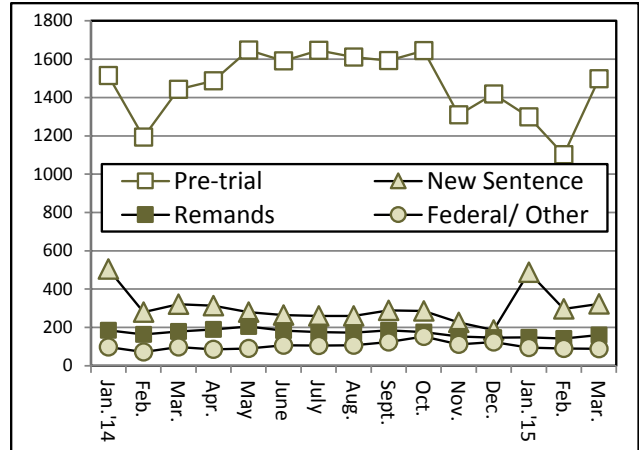


Chart 4 – Prison population, first-of-month

2013, 2014 and 2015

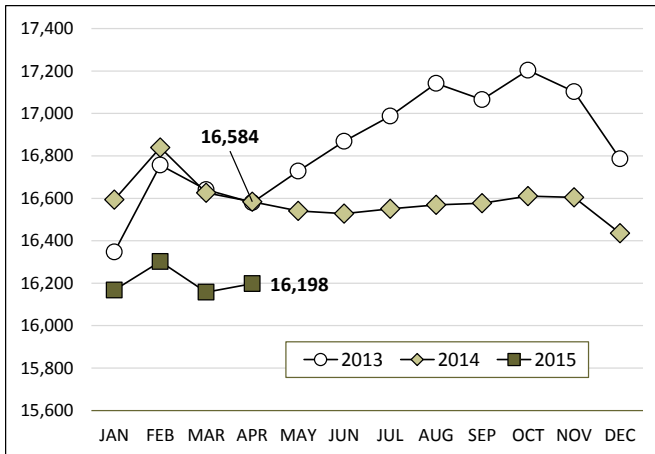


Chart 7– Remands from community release

March 2015

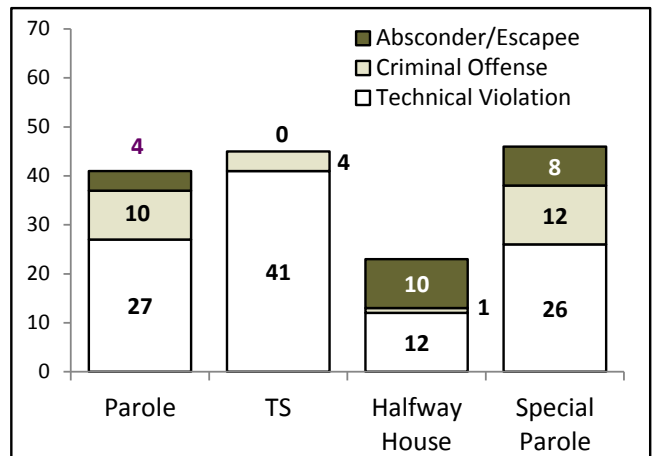


Chart 5 – Statewide criminal arrests

2014 and 2015

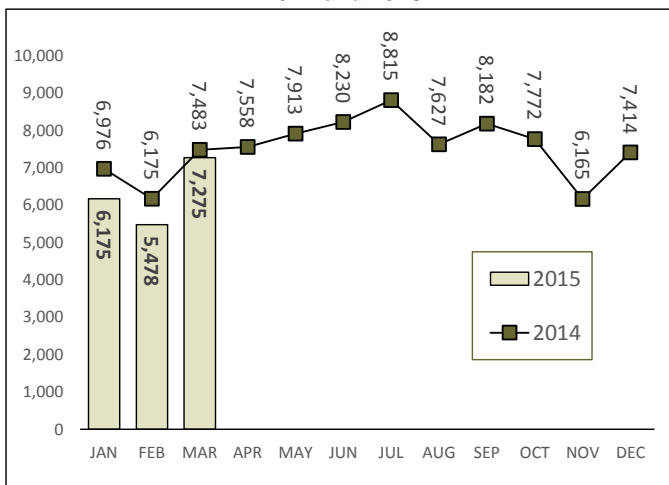
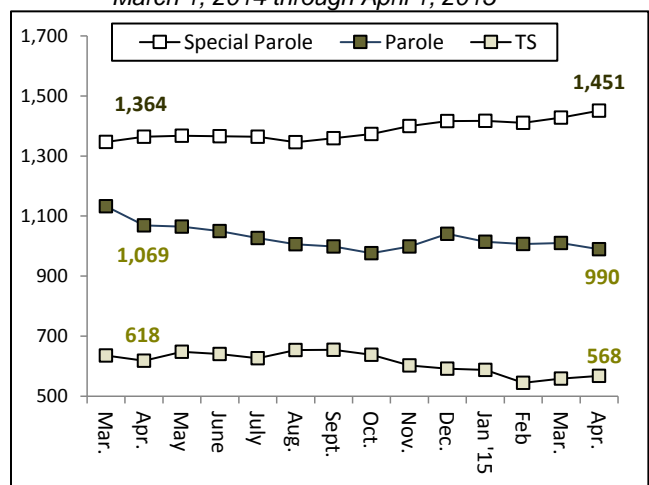


Chart 8 – DOC community supervision

March 1, 2014 through April 1, 2015



Note: Data for all charts, with the exception of Chart 5, was supplied by CT DOC. Data for Chart 5 is based on new case starts in the state Offender-Based Tracking System (OBTS). Chart 8 includes offenders in halfway houses.