

OPM - Criminal Justice Policy & Planning Division

# Monthly Indicators Report

## Highlights

- After four months of growth, the prison population dipped during August. On the first of September, there were 17,065 offenders in state prisons, down 77 from a month earlier. The number of sentenced offenders fell by 137 during the month.
- New sentenced admits were down 25% compared to last year. Pre-trial admits were down almost 8% (see table 3).
- The Board of Pardons and Parole (BoPP) closed interest in 413 cases during August. In July, they closed interest in 262 cases (see table 2c). Inmates affected by these actions are being informed that they will not be given a parole hearing with a standard form letter.
- Most offenders whose cases have been closed by BoPP can be released through other, existing community-release mechanisms. Given current residential bed capacity, however, it is likely that many of these offenders will discharge from prison (EOS) at the completion of their sentences. After discharge, many of these offenders are expected to transition to probation or special parole.
- The DUI/home confinement program has been operating for just over a year. The program has stabilized and currently manages approximately 100 offenders at any given time. Offenders are monitored by DOC parole staff.

*If there are any issues that you would like to see covered in future monthlies, please email:*  
**[opm.mir@ct.gov](mailto:opm.mir@ct.gov)**

## Prison Population Forecast

Although the prison population has dipped, the rate of decline is slower than optimum. On the positive side, the number of monthly admissions for pre-sentenced offenders should begin to decline, somewhat easing crowding conditions at some facilities.

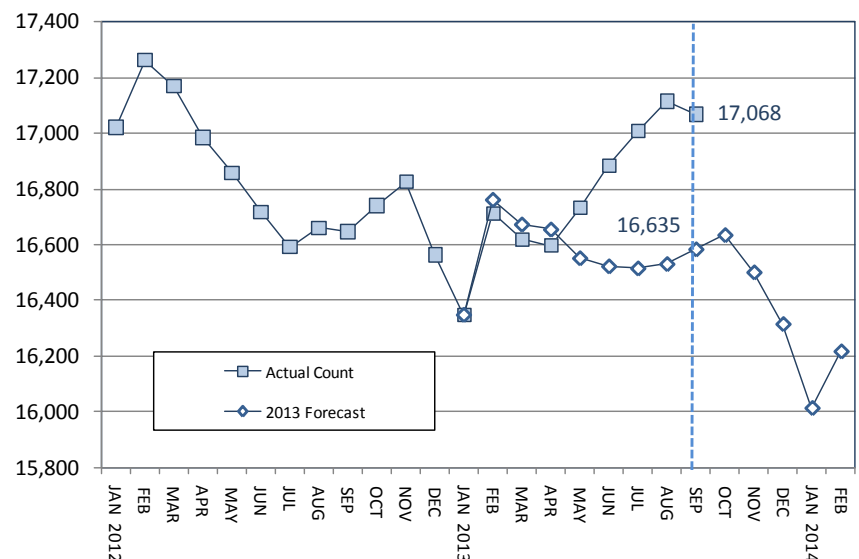
During August, the sentenced population declined by 137 offenders. Most of this drop can be explained by increases in the number of DOC discretionary releases. During August, 27% more offenders were released to TS than were released in July. Releases to halfway houses were also up by 27% and the number of offenders released on transitional placement grew by over 50%. The number of offenders released to parole has also edged up in the last two months (see table 3).

TABLE 1 – Prison Population Forecast

	Avg. Daily Count, Actual	OPM 2012 Forecast	Inmate difference
JAN '13	16,347	16,347	0
FEB	16,712	16,763	-51
MAR	16,619	16,673	-54
APR	16,597	16,655	-58
MAY	16,731	16,551	180
JUN	16,884	16,522	362
JUL	17,007	16,515	492
AUG	17,115	16,530	585
SEP	17,068	16,584	484
OCT		16,635	-
NOV		16,500	-
DEC		16,314	-
JAN '14		16,010	-
FEB		16,215	-

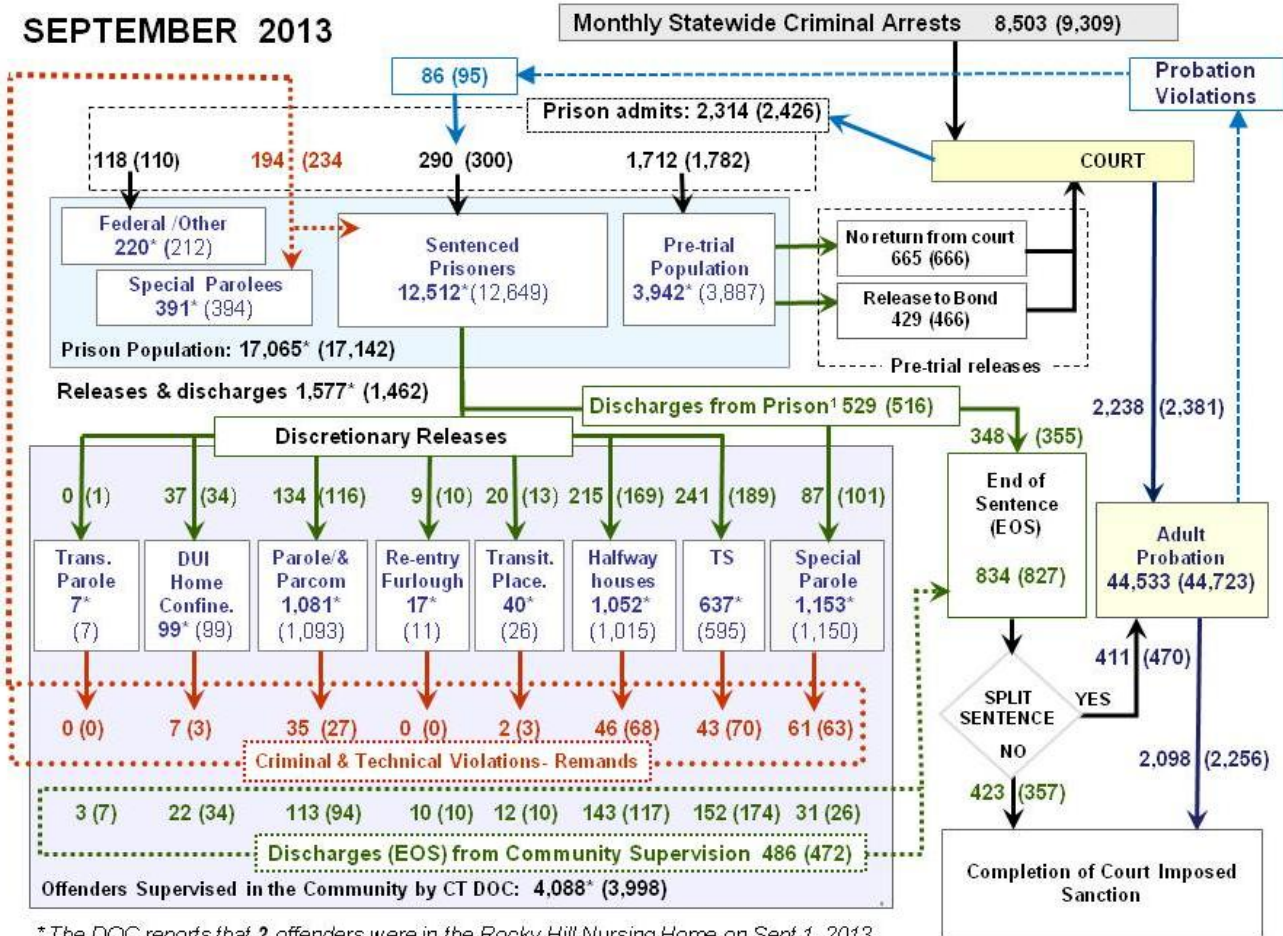
While the pace of releases has increased, overall, releases of sentenced-offenders are down 11% compared to the same time last year. Assuming the prison population continues to drop off through the remainder of the year, the January 1, 2014 figure could decline below 16,500. The likelihood of that happening however is not certain.

Chart 1 – Actual ADC of the prison population against the OPM forecast  
 January 1, 2012 through February 1, 2014



## Chart 2 - Criminal justice, monthly flows

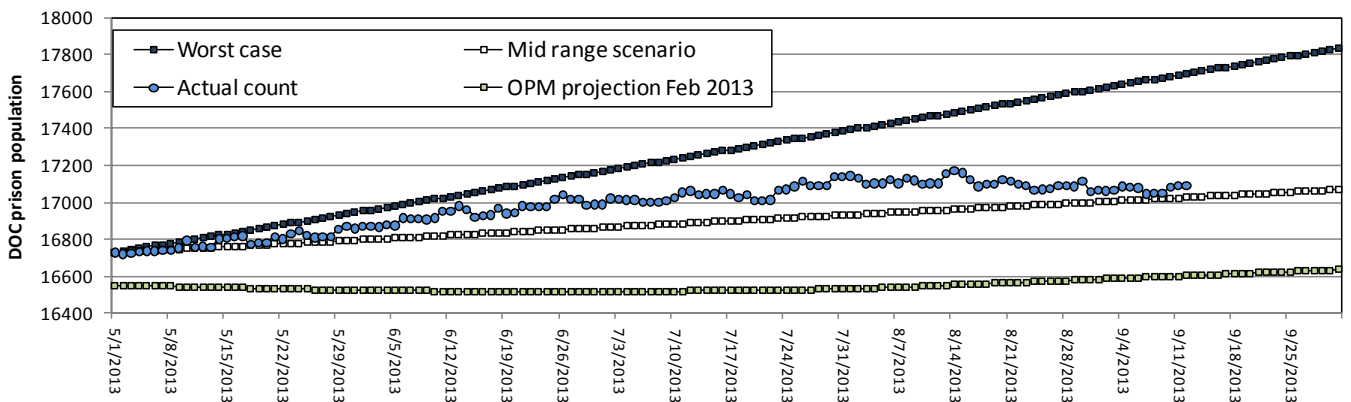
**SEPTEMBER 2013**



\*The DOC reports that 2 offenders were in the Rocky Hill Nursing Home on Sept. 1, 2013.

This chart contains monthly operational data for August 2013 and daily counts reported on September 1, 2013. Asterisks (\*) indicate the daily count on September 1st. Figures for the previous month are enclosed by parentheses.  
<sup>1</sup>DOC facility reports indicate that 529 sentenced offenders discharged (EOS) from DOC facilities during the month.  
 Sources of the data: Arrests - OBTS, Furlough and probation data - CSSD, all other data - CT DOC

## Chart 2a – OPM population projections and the actual prison count



In May, OPM devised several scenarios to project, and then track, changes in the prison population. At the time, the population was expanding at a rate of 7 offenders per day. OPM's worst-case scenario projected what the population would be, were the system to continue growing at its current rate. The mid-range scenario projected what the population would look like if 1) the sentenced population

stabilized, and 2) the pre-trial population continued to grow at a typical rate through the summer.

It appears that the prison population is starting to edge downwards. Although the DOC and BoPP worked through the summer to mitigate the spike in the prison population, it remains unclear when we will see a return to expected prison levels.

**Table 2 – The first-of-the-month population counts**

	2013	2013	2013	2012	% Change	
	July 1	Aug. 1	Sep. 1	Sep. 1	Monthly	Annual
<b>DOC Facilities</b>						
Federal/Other	183	212	220	172	3.8%	27.9%
Sentenced	12,564	12,649	12,512	12,315	-1.1%	1.6%
Special Parole	391	394	391	365	-0.8%	7.1%
Pre-trial	3,850	3,887	3,942	3,794	1.4%	3.9%
<b>Total</b>	<b>16,988</b>	<b>17,142</b>	<b>17,065</b>	<b>16,646</b>	<b>-0.4%</b>	<b>2.5%</b>
<b>DOC Community</b>						
Transfer Parole	7	7	7	10	-	-
Parole/ Parcom Tot:	1,107	1,093	1,081	1,318	-1.1%	-18.0%
Parole	940	926	919	1,152	-0.8%	-20.2%
Parcom @ CT	167	167	162	166	-3.0%	-2.4%
Furlough	13	11	17	20	54.5%	-15.0%
Trans Placement	27	26	40	20	53.8%	100.0%
DUI/Home confine.	102	99	99	117	0.0%	-15.4%
Halfway House Total	1,032	1,015	1,052	1,050	3.6%	0.2%
Comm Release	771	756	766	855	1.3%	-10.4%
TS	15	17	29	9	70.6%	222.2%
Parole	84	93	102	80	9.7%	27.5%
Transfer Parole	0	0	0	0	-	-
Special Parole	162	149	155	106	4.0%	46.2%
TS Total	655	595	637	790	7.1%	-19.4%
Nursing home	1	2	2	0	-	-
Special Parole	1,119	1,150	1,153	1,142	0.3%	1.0%
<b>Total</b>	<b>4,063</b>	<b>3,998</b>	<b>4,088</b>	<b>4,467</b>	<b>2.3%</b>	<b>-8.5%</b>

**Table 3 – Monthly admissions, releases and discharges\***

	2013	2013	2013	2012	% Change	
	June	July	Aug.	Aug.	Monthly	Annual
<b>Admissions</b>						
Federal/Other	74	110	118	122	7.3%	-3.3%
Returns	183	234	194	227	-17.1%	-14.5%
Trans.Parole / DUI	2	3	7	8	-	-
Parole	38	27	35	51	29.6%	-31.4%
Trans Plac/Furlough	2	3	2	3	-	-
HWH	52	68	46	50	-32.4%	-8.0%
TS	36	70	43	56	-38.6%	-23.2%
Special Parole	53	63	61	59	-3.2%	3.4%
New Sentence	287	300	290	390	-3.3%	-25.6%
VOP	74	95	86	107	-9.5%	-19.6%
Pre-trial	1,525	1,782	1,712	1,856	-3.9%	-7.8%
<b>Total</b>	<b>2,069</b>	<b>2,426</b>	<b>2,314</b>	<b>2,595</b>	<b>-4.6%</b>	<b>-10.8%</b>
<b>Releases</b>						
Transfer Parole	1	1	0	2	-	-
Parole	80	116	134	158	15.5%	-15.2%
Furlough	9	10	9	24	-10.0%	-62.5%
Transfer Placement	8	13	20	10	53.8%	100.0%
Home Confinement DL	21	34	37	47	8.8%	-21.3%
HWH	173	169	215	226	27.2%	-4.9%
TS	178	189	241	290	27.5%	-16.9%
Special Parole	88	101	87	86	-13.9%	1.2%
Nursing home	1	2	0	-	-	-
End of Sentence	784	827	834	948	0.8%	-12.0%
<b>Total</b>	<b>1,343</b>	<b>1,462</b>	<b>1,577</b>	<b>1,791</b>	<b>7.9%</b>	<b>-11.9%</b>
<b>Pre-trial Releases*</b>						
Did not return from Cot	485	666	665	697	-0.2%	-4.6%
Release to Bond	419	466	429	535	-7.9%	-19.8%

\* Totals reflect events not individuals.

## Board of Pardons and Paroles

**Table 4a – Inmates with sentences > 24 months**

	Parole eligible	Not eligible
June	8,440	860
July	8,465	861
August	8,471	862

**Table 4b – Parole hearings**

	Hearings	Granted	Rate
June	166	133	80%
July	139	106	76%
Aug.	167	124	74%

**Table 4b – Other parole actions**

	Reparole from revocation	Reparole from rescission	Closed interest cases	Special parole cases
June	35	3	5	22
July	46	3	262	21
Aug.	56	7	413	36

## Pre-trial detainees

**Table 5 – Bond ranges, pre-trial prisoners**

	June 1, 2013	July 1, 2013	Aug. 1, 2013	Sept. 1, 2013
Bond amount				
Less than \$20K	15.5%	16.9%	17.3%	17.8%
\$20K to < \$50K	17.9%	17.3%	17.7%	16.6%
\$50K to < \$100K	21.0%	20.9%	21.2%	21.4%
\$100K or higher	45.6%	44.9%	43.9%	44.2%
Over \$1M	6.1%	5.7%	5.5%	5.3%

**Table 5a – Pre-trial inmates, length-of-stay**

Weeks since last DOC admit	June 1, 2013	July 1, 2013	Aug. 1, 2013	Sept. 1, 2013
< 1 week	13.6%	13.8%	13.8%	13.4%
1 to < 3 weeks	11.4%	11.8%	11.5%	12.2%
3 to < 10 weeks	27.2%	27.1%	26.3%	25.3%
10 to < 30 weeks	25.6%	27.2%	28.1%	28.7%
30 wks or more	22.1%	20.0%	20.3%	20.5%
	100%	100%	100%	100%

## Court Support Services Division

**Table 6 – The Jail Re-interview Program**

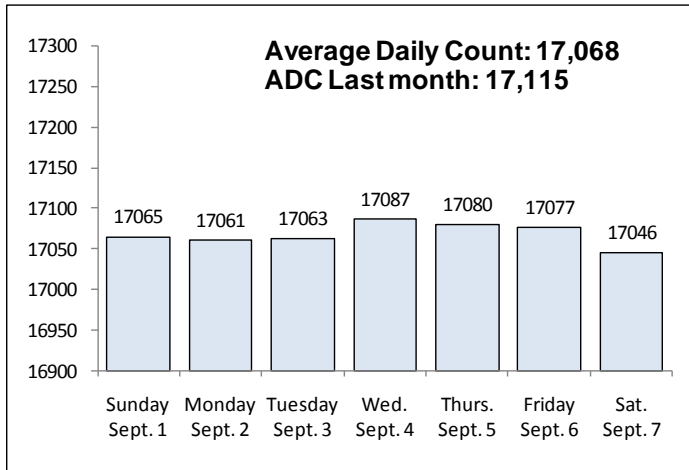
	Offenders interviewed	Offenders released	Releases last year
June	1,641	848	751
July	1,824	1,016	709
Aug.	1,756	998	817

**Table 7 – Pre-Trial & split-sentence starts**

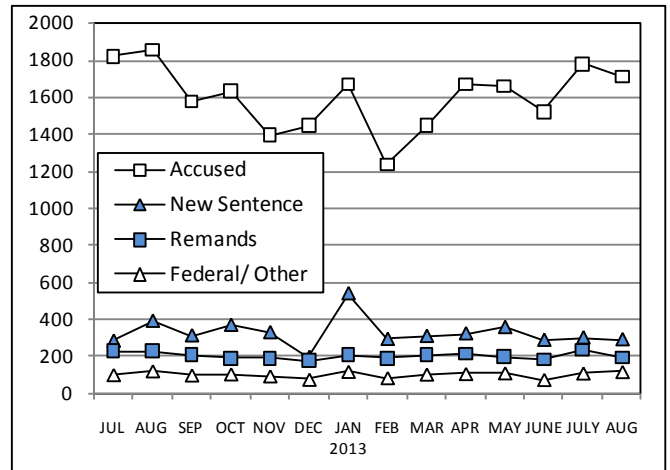
	Pre-trial Bail Case Starts	Client Supv. Starts	Split Sentence Starts
June	2,440	2,196	453
July	2,670	2,381	470
Aug.	2,576	2,238	411

Note: Figures published here are based on operational data available at the time of publication. Data in subsequent issues may not agree.

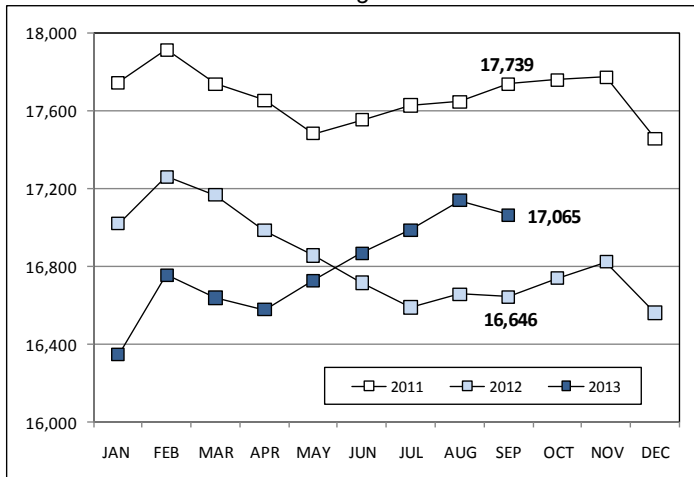
**Chart 3 – Prison Population**  
September 1, 2013 to September 7, 2013



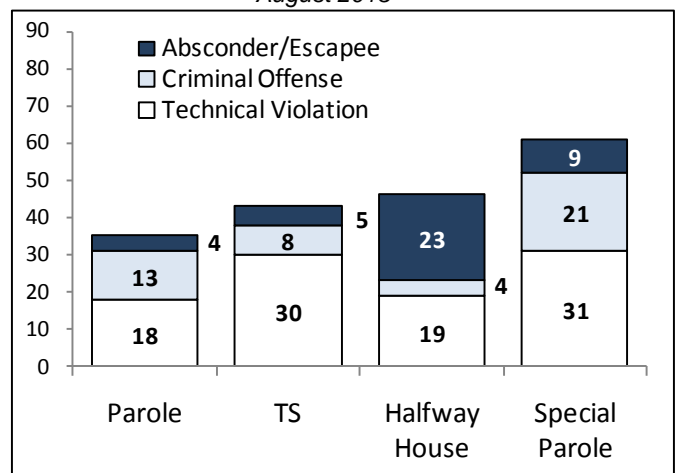
**Chart 6 – Monthly DOC Admissions**  
July 2012 through August 2013



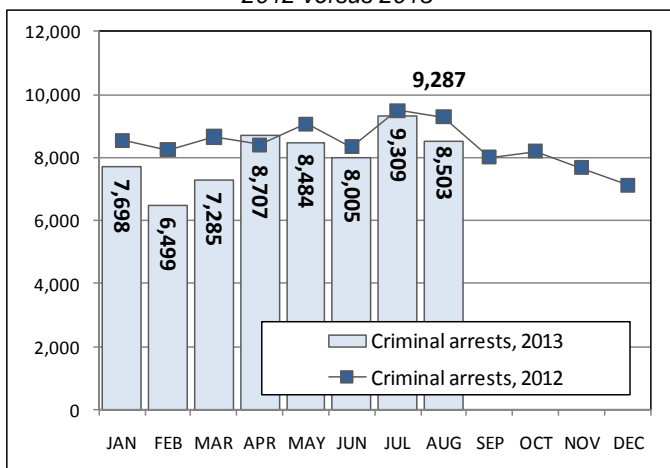
**Chart 4 – Prison Population, first-of-month**  
2011 through 2013



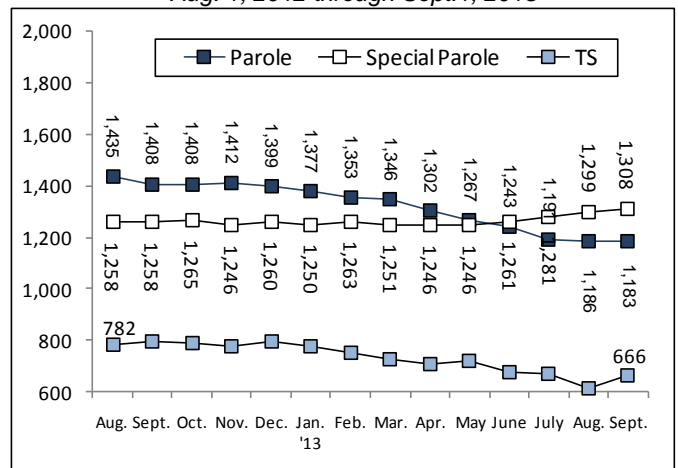
**Chart 7 – Remands from Community Release**  
August 2013



**Chart 5 – Monthly Statewide Criminal Arrests**  
2012 versus 2013



**Chart 8 – Parole, TS and Special Parole, supervised cases**  
Aug. 1, 2012 through Sept. 1, 2013



Note: Data for all charts, with the exception of Chart 5, was supplied by CT DOC. Data for Chart 5 is based on new case starts in the state Offender-Based Tracking System (OBTS). Chart 8 includes offenders in halfway houses.