

OPM - Criminal Justice Policy & Planning Division

Monthly Indicators Report

Highlights

- The prison population on June 1, 2013 stood at 16,869, 141 over what it had been on May 1. Most of this increase occurred among the sentenced population, which grew by 104 prisoners during the month.
- Between January 1 and June 6 of this year, the prison population grew by 568 prisoners, from 16,347 to 16,915. Between Apr. 1 and June 6, the prison population has been expanding at an average rate of 5 prisoners per day.
- Last month the state began admitting Department of Mental Health and Addiction Services' patients to a nursing home facility in Rocky Hill. On June 1st, the Department of Correction had one inmate in that facility.
- This month's rise in the prison population was not driven by an increase in admissions. During April, the DOC reported 2,315 prison-admits. In May that figure rose by 10 to 2,325 (see Chart 2). Arrests in May were also down compared to April.
- In May, the number of offenders on special parole exceeded the number of offenders on discretionary parole for the first time (see chart 8). In recent years, the courts have increasingly included special parole in sentencing to insure tighter post-prison supervision. To date, the cumulative impact of this change has not been explored by either DOC or the Judicial Branch.

Contact this paper at:
opm.mir@ct.gov

Prison Population Forecast

The prison population continues to grow at a troubling rate. It is especially troubling since most of the increase occurred among sentenced prisoners whose population, given the time of year, should be shrinking. Last month, this paper projected that the total prison population could exceed 17,000 by early fall. It now appears that the prison population will probably exceed 17,000 by the end of next month. By early fall, should current trends continue, the population could be in the range of 17,500 to 17,600. It would be hard to imagine how the state could avoid opening a prison under these circumstances.

The state's prisons appear to be near capacity. It is estimated that over 500 prisoners are currently housed in non-traditional beds. Assuming a) the sentenced population does not decrease significantly, and b) the prisons experience their normal summer growth, over-crowding will become a serious issue in the very near future.

OPM's Criminal Justice Division continues to monitor these developments closely. Most indications, at this point, suggest several causes for current population increase. Virtually all appear related to issues with existing parole review, grant and release processes.

TABLE 1 – Prison Population Forecast

	Avg. Daily Count, Actual	OPM 2012 Forecast	Diff. %
JAN 2013	16,347	16,347	-
FEB	16,712	16,763	0.3%
MAR	16,619	16,673	0.3%
APR	16,597	16,655	0.4%
MAY	16,731	16,551	-1.1%
JUN	16,884	16,522	-2.1%
JUL		16,515	-
AUG		16,530	-
SEP		16,584	-
OCT		16,635	-
NOV		16,500	-
DEC		16,314	-
JAN 2014		16,010	-
FEB		16,215	-

Average Daily Count for first week of month

Chart 1 – Actual ADC of the prison population against the OPM forecast
January 1, 2012 through February 1, 2014

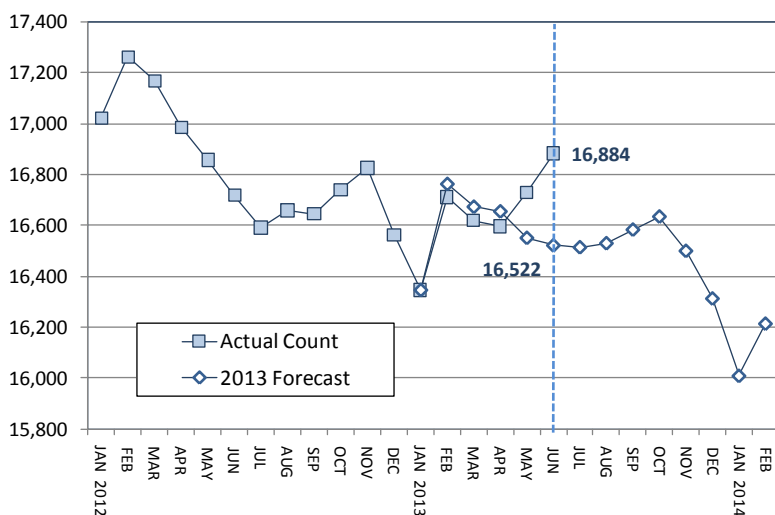
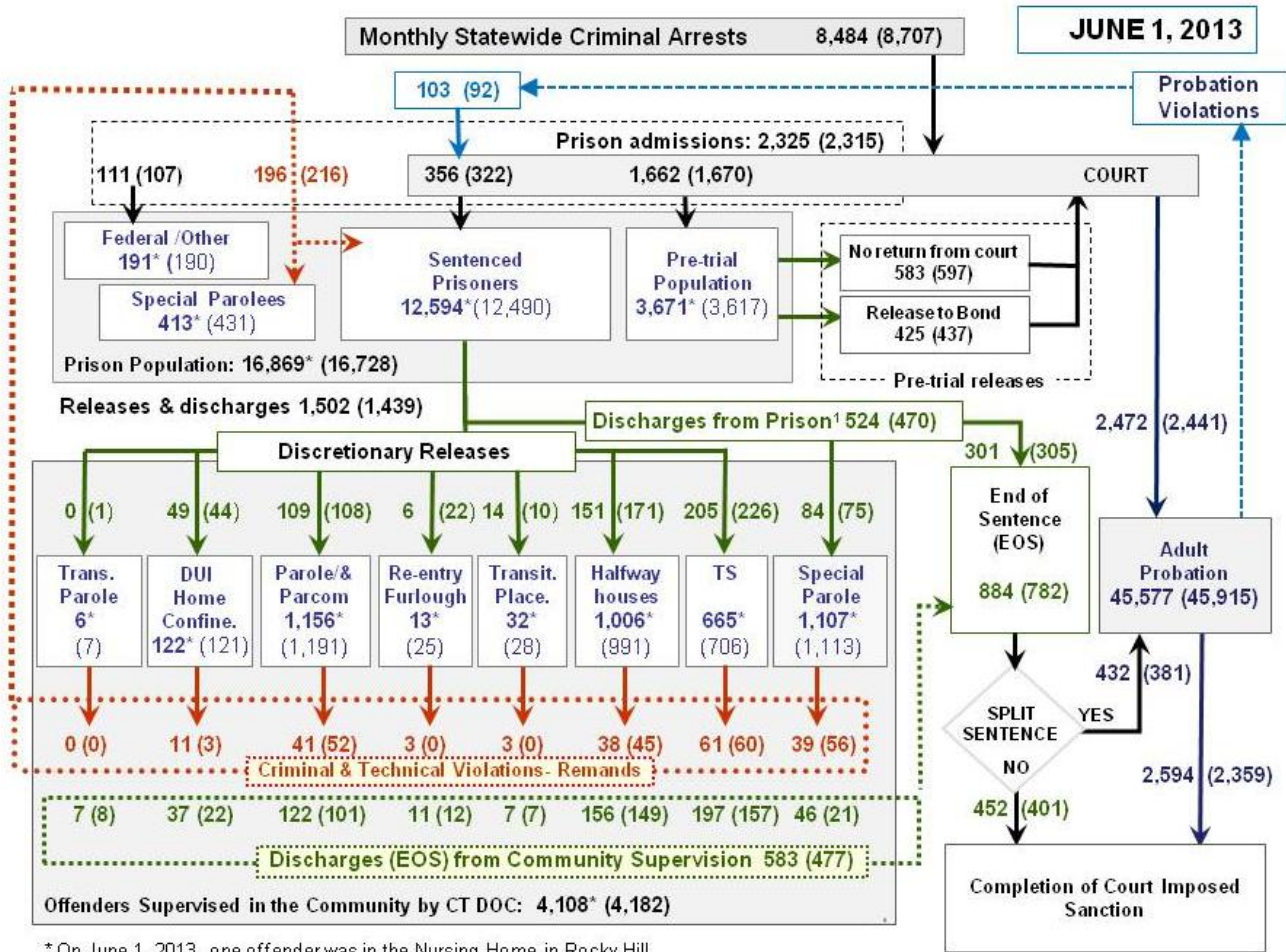


Chart 2 - Criminal justice, monthly flows



* On June 1, 2013, one offender was in the Nursing Home in Rocky Hill.

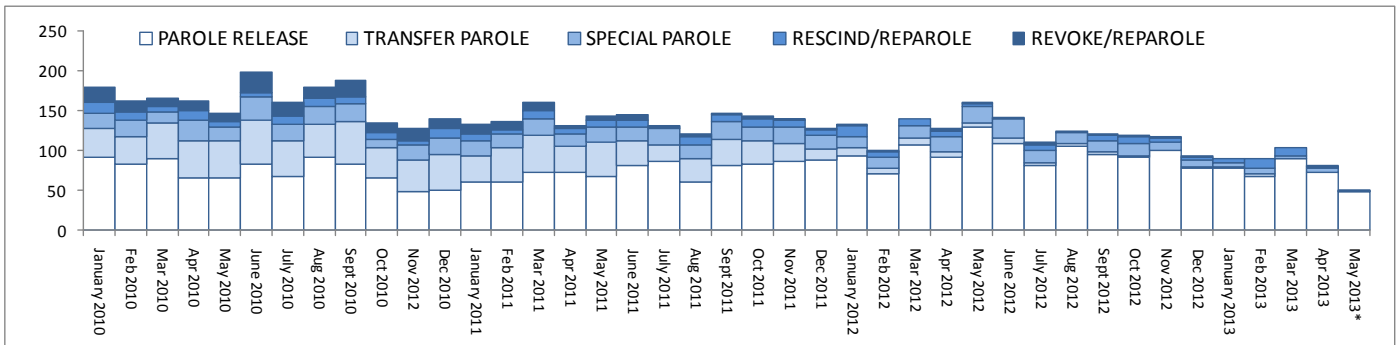
This chart contains monthly operational data for May 2013 and daily counts reported on June 1, 2013.

Asterisks (*) indicate the daily count on June 1st. Numbers enclosed by parenthesis are for the previous month.

¹DOC facility reports indicate that 524 sentenced offenders discharged (EOS) from DOC facilities during the month.

Data source: Arrest data - OBTS, Court and probation data - CSSD, all other data - CT DOC

Chart 2a - Offenders released to parole by hearing type, January 2010 through April 2013



Analysis of inmate movement data and parole-hearing data indicates that the operation of the state's discretionary parole system has changed considerably in recent years. Chart 2a plots the number of offenders who were "RELEASED TO SUPERVISED PAROLE" each month, grouped according to the type of their last parole-hearing, between 1/1/2010 and 5/17/2013.

The data shows that the mix of offenders making it out to parole has changed gradually, but considerably, over the last few years. Virtually gone are offenders released through the Transfer Parole process. Also greatly diminished is the number of offenders who returned to parole after revocation. The impact of these changes on DOC prison capacity can only be roughly estimated at the present time.

Table 2 – The first-of-month population count

	2013	2013	2013	2012	% Change	
	Apr. 1	May 1	June 1	June 1	Monthly	Annual
DOC Facilities						
Federal/Other	178	190	191	138	0.5%	38.4%
Sentenced	12,371	12,490	12,594	12,666	0.8%	-0.6%
Special Parole	419	431	413	342	-4.2%	20.8%
Pre-trial	3,612	3,617	3,671	3,572	1.5%	2.8%
Total	16,580	16,728	16,869	16,718	0.8%	0.9%
DOC Community						
Transfer Parole	6	7	6	6	-14.3%	0.0%
Parole/ Parcom Total	1,217	1,191	1,156	1,308	-2.9%	-11.6%
Parole	1,052	1,026	992	1,133	-3.3%	-12.4%
Parcom @ CT	165	165	164	175	-0.6%	-6.3%
Furlough	14	25	13	25	-48.0%	-48.0%
Trans Placement	28	28	32	17	14.3%	88.2%
DUI/Home confine.	104	121	122	103	0.8%	18.4%
Halfway House Total	1,042	991	1,006	1,080	1.5%	-6.9%
Comm Release	818	770	753	879	-2.2%	-14.3%
TS	13	12	12	15	0.0%	-20.0%
Parole	85	76	87	81	14.5%	7.4%
Transfer Parole	0	0	0	0	-	-
Special Parole	126	133	154	105	15.8%	46.7%
TS Total	694	706	665	776	-5.8%	-14.3%
Special Parole	1,120	1,113	1,107	1,126	-0.5%	-1.7%
Total *	4,225	4,182	4,107	4,441	-1.8%	-7.5%

*Note: One offender was at the Rocky Hill nursing home.

Table 3 – Monthly admissions, releases and discharges*

	2013	2013	2013	2012	% Change	
	Mar.	Apr.	May	May	Monthly	Annual
Admissions						
Federal/Other	104	107	111	102	3.7%	8.8%
Returns	208	216	196	234	-9.3%	-16.2%
Trans.Parole / DUI	6	3	11	5	-	-
Parole	49	52	41	54	-21.2%	-24.1%
Trans Plac/Furlough	4	0	6	3	-	-
HWH	39	45	38	49	-15.6%	-22.4%
TS	52	60	61	60	1.7%	1.7%
Special Parole	58	56	39	63	-30.4%	-38.1%
New Sentence	308	322	356	403	10.6%	-11.7%
VOP	80	92	103	100	12.0%	3.0%
Pre-trial	1,446	1,670	1,662	1,665	-0.5%	-0.2%
Total	2,066	2,315	2,325	2,404	0.4%	-3.3%
Releases						
Transfer Parole	2	1	0	1	-	-
Parole	131	108	109	202	0.9%	-46.0%
Furlough	7	22	6	25	-72.7%	-76.0%
Transfer Placement	8	10	14	12	40.0%	16.7%
Home Confinement DUI	36	44	49	52	11.4%	-5.8%
HWH	213	171	151	244	-11.7%	-38.1%
TS	190	226	205	272	-9.3%	-24.6%
Special Parole	70	75	84	74	12.0%	13.5%
End of Sentence	831	782	884	952	13.0%	-7.1%
Total	1,488	1,439	1,502	1,834	4.4%	-18.1%
Pre-trial Releases*						
Did not return from Court	513	597	583	584	-2.3%	-0.2%
Release to Bond	431	437	425	474	-2.7%	-10.3%

* Totals reflect events not individuals.

Board of Pardons and Paroles

Table 4a – Inmates with sentences greater than 24 months

	Parole eligible	Not eligible
Apr.	8,311	848
May	8,383	853
June	8,440	860

Table 4b – Parole hearings

	Hearings	Granted	Rate
Mar.	160	113	71%
Apr.	171	113	66%
May	186	149	80%

Pre-trial detainees

Table 5 – Bond ranges, pre-trial prisoners

Bond amount	Apr. 1, 2013	May 1, 2013	June 1, 2013
Less than \$20K	17.0%	16.5%	15.5%
\$20K to < \$50K	15.8%	16.5%	17.9%
\$50K to < \$100K	21.7%	20.5%	21.0%
\$100K or higher	45.5%	46.4%	45.6%
Over \$1M	6.3%	6.3%	6.1%

Table 5a – Pre-trial inmates, length-of-stay

Weeks since last DOC admit	Apr. 1, 2013	May 1, 2013	June 1, 2013
< 1 week	13.8%	14.0%	13.6%
1 to < 3 weeks	10.6%	11.6%	11.4%
3 to < 10 weeks	24.2%	24.7%	27.2%
10 to < 30 weeks	28.8%	27.8%	25.6%
30 wks or more	22.6%	22.0%	22.1%
	100%	100%	100%

Court Support Services Division

Table 6 – The Jail Re-interview Program

	Offenders interviewed	Offenders released	Releases last year
Mar.	1,535	889	702
Apr.	1,655	970	660
May	1,839	942	733

Table 7 – Pre-Trial & split-sentence starts

	Pre-trial Bail Case Starts	Client Supv. Starts	Split Sentence Starts
Mar.	2,237	2,310	420
Apr.	2,612	2,441	381
May	2,488	2,472	432

DUI – home confinement

Table 8 – Releases and discharges

	Monthly releases to	On home confinement, 1st of month	Monthly discharges from
Apr.	44	104	22
May	49	121	37
June	-	122	-

Note: Figures published here are based on operational data available at the time of publication. Data in subsequent issues may not agree.

Chart 3 – Prison Population
June 1, 2013 to June 7, 2013

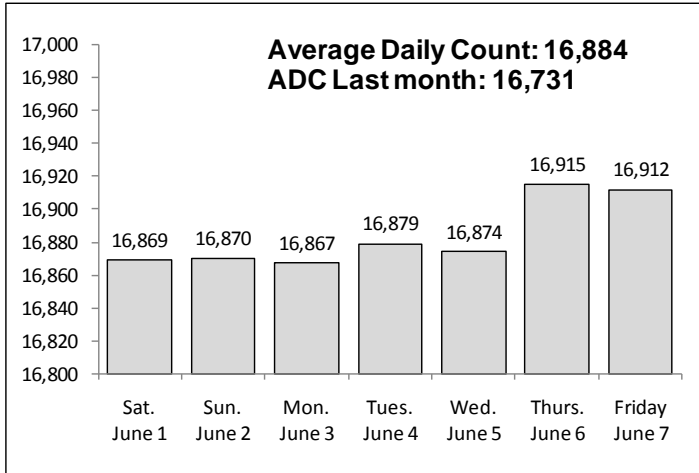


Chart 6 – Monthly DOC Admissions by Type
April 2012 through May 2013

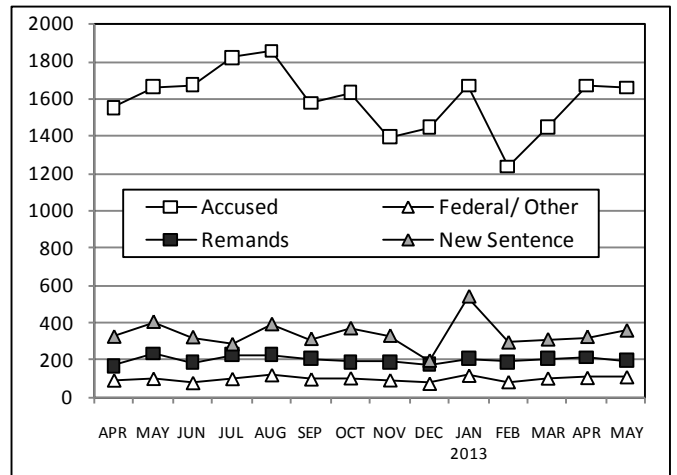


Chart 4 – Prison Population, first-of-month
2011 through 2013

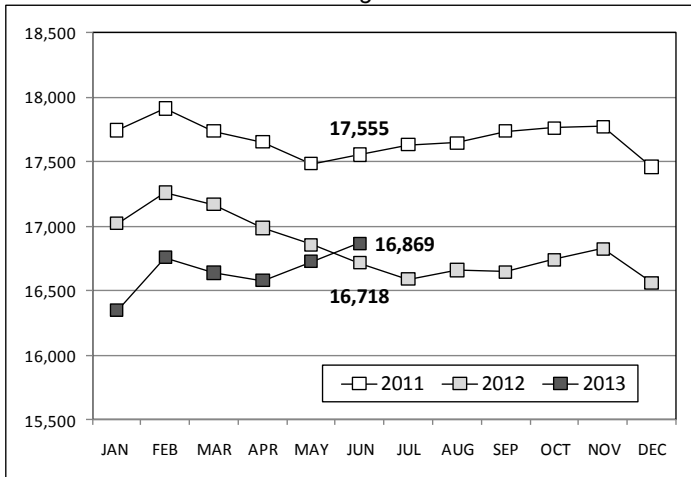


Chart 7 – Remands from Community Release
May 2013

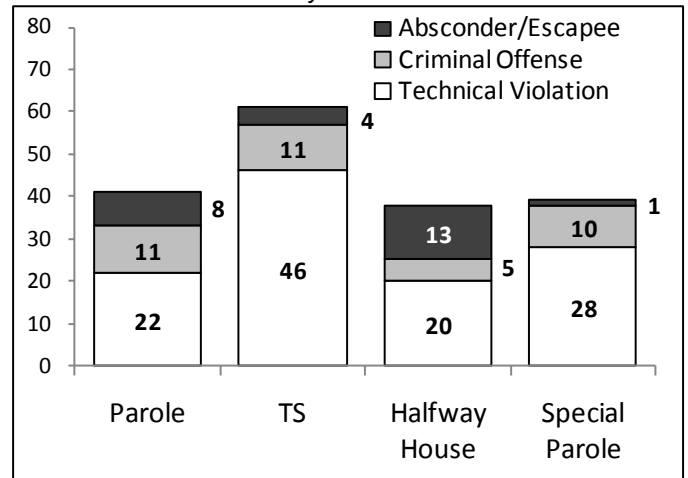


Chart 5 – Monthly Statewide Criminal Arrests
2012 versus 2013

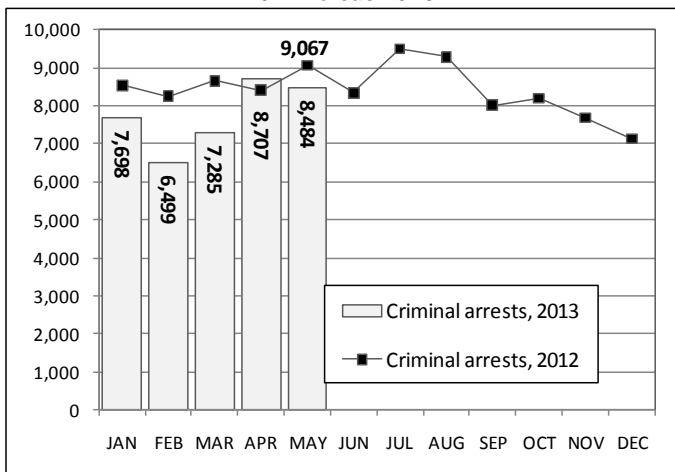
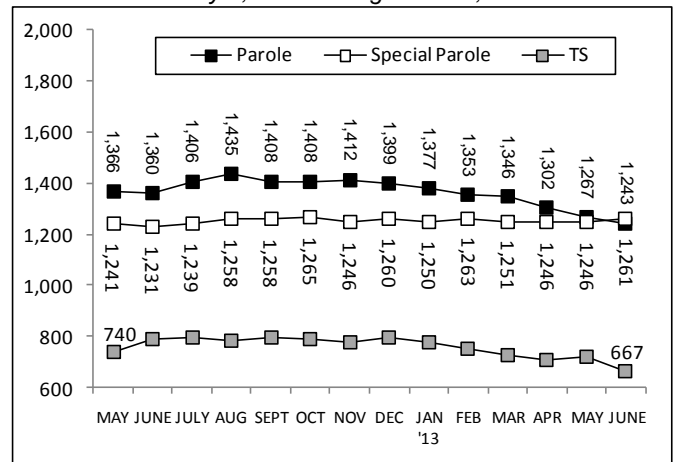


Chart 8 – Parole, TS and Special Parole, supervised cases
May 1, 2012 through June 1, 2013



Note: Data for all charts, with the exception of Chart 5, was supplied by CT DOC. Data for Chart 5 is based on new case starts in the state Offender-Based Tracking System (OBTS).