

OPM - Criminal Justice Policy & Planning Division

Monthly Indicators Report



Published by the Connecticut Statistical Analysis Center at the Connecticut Office of Policy & Management

Highlights

- On January 1st 2012, the state's total prison population was 17,022. The sentenced prison population on that day dropped below 13,000. The last time the sentenced population fell below 13,000 was in January 1999.
- During December, 1,075 offenders completed their prison sentences early because of the Risk Reduction Earned Credit (RREC) program. Most offenders (588) were discharged directly from prison. The other 487 were already in the community under DOC supervision.
- The average offender who discharged from prison in December earned 30.9 days of credit. The average offender discharging from community supervision earned 71.5 days.
- Caseloads at the DOC parole office have declined in recent months. The parole population on January 1st was down by almost 30% compared to last year year's figure (See Table 2).
- RREC's impact on the number of offenders discharging each month appears to be subsiding. In November, 1,351 offenders discharged EOS; in December, 1,096 (See Chart 2). The DOC expects monthly discharges to return to normal levels in March.

OPM will release a new prison population forecast in mid-February. It will also publish its analysis of 5-year recidivism rates among sex offenders released in 2005.

Prison Population Forecast

In February 2011, OPM projected that the prison population would drop to 17,375 by January 1, 2012. Within months of publishing that forecast, however, it became apparent at OPM that the prison population for January would come in considerably under the projected value.

Last summer, OPM acknowledged that its February projection had been too conservative and that the prison population could drop below 17,200 by the end of the year.

TABLE 1 –Prison Population Forecast

	Actual (*Avg Daily Count)	OPM 2011 Forecast	Diff. %
FEB '11	17,838*	-	-
MAR	17,702*	17,960	-1.4%
APR	17,628*	17,910	-1.6%
MAY	17,510*	17,792	-1.6%
JUN	17,520*	17,787	-1.5%
JUL	17,615*	17,786	-1.0%
AUG	17,666*	17,810	-0.8%
SEP	17,718*	17,950	-1.3%
OCT	17,774*	18,035	-1.4%
NOV	17,691*	17,931	-1.3%
DEC	17,412*	17,758	-1.9%
JAN '12	17,090*	17,375	-1.6%
FEB	-	17,640	-

* Average Daily Count, first week of month

When the Risk Reduction Earned Credit (RREC) program went operational in the autumn, it resulted in even more significant and rapid declines in the prison population than OPM had anticipated. The actual average-daily prison count (ADC) for the first week in January came in considerably below the forecast at 17,090, a difference of 285 prisoners. In fact, for a few short hours before Christmas Day the DOC prison population actually fell below 17,000.

Such low levels of incarceration put the state in new territory with respect to our expectations of how large the state's prison population should be given our size, the current crime rate and demography.

CHART 1 – Average Daily Inmate Count for the First Week of the Month
January 1, 2010 through February 1, 2012

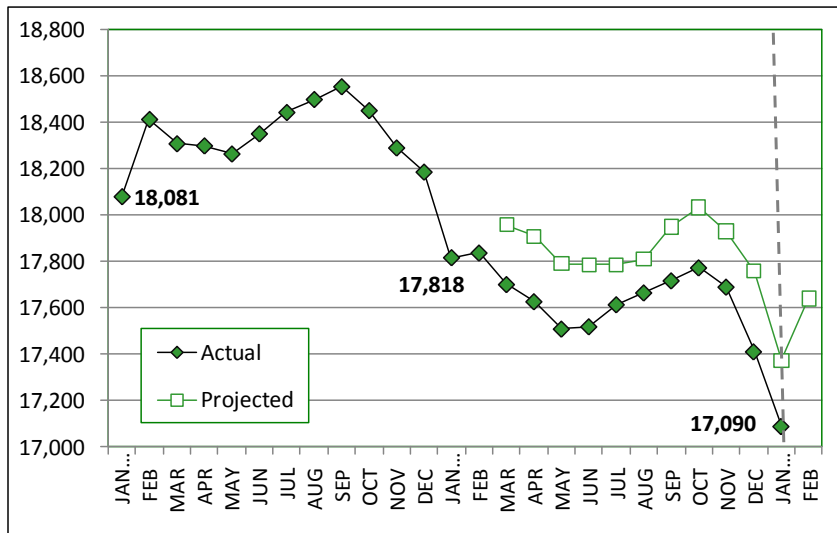
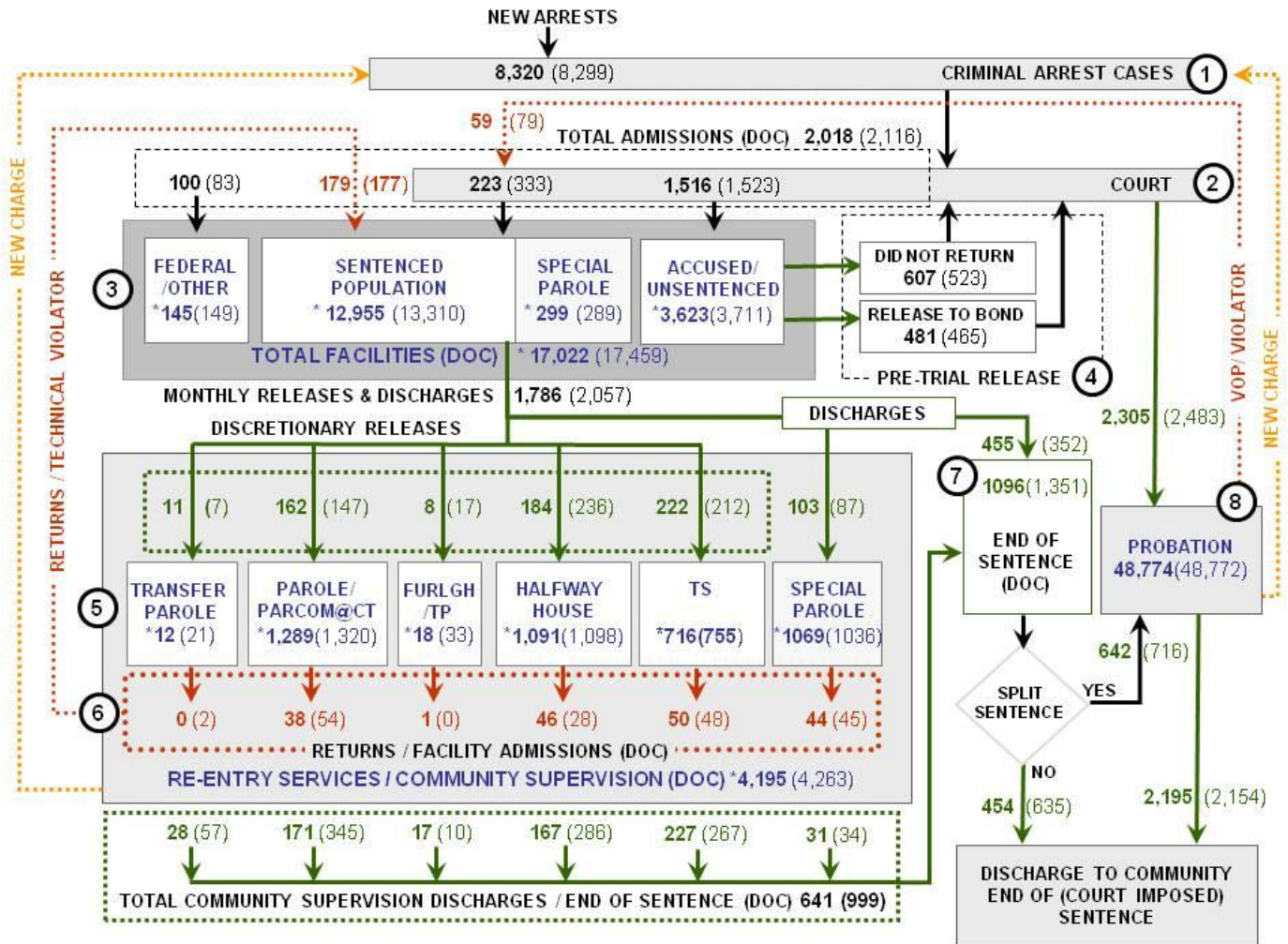


CHART 2 – Connecticut Criminal Justice System – Monthly Overview



Asterisks (*) indicate the population count on January 1, 2012.
 Parentheses enclose figures for the previous month.

Sources: Arrest-Judicial/Court Operations; Court-Judicial/CSSD; Facility/Community Supervision-DOC

Unlike states that have county governments, the majority of agencies within Connecticut's criminal justice system are State agencies. The one exception is law enforcement, where there are over 90 local police departments and the Connecticut State Police.

- 1) Arrest:** An individual enters into the criminal justice system at the time of arrest.
- 2) Court:** At arraignment, judges review the charges filed against the accused and set a bail amount. Individuals who cannot meet bail conditions are incarcerated in DOC facilities to await trial. If the defendant is convicted, they may be sentenced to a range of sanctions including a fine, probation, or a term of incarceration.
- 3) DOC Facilities:** Total facility population at DOC contains the unsentenced population, which is awaiting trial, the sentenced population, inmates who have returned from special parole, and offenders charged in federal cases or non-state cases.
- 4) Pre-Trial Release:** Some defendants who are incarcerated pending the disposition of their cases may be eligible for a bond reduction or placement into pre-trial diversionary programs or treatment programs. These programs feature close coordination and cooperation between DOC, CSSD and the Department of Mental Health and Addiction Services (DMHAS).
- 5) Re-Entry Services:** Depending on several factors, an inmate may be eligible to complete a portion of his/her prison sentence under supervision of the DOC's Parole and Community Services Unit. Non-violent Inmates with sentences shorter than two years are eligible for Transitional Supervision after serving 50% of their sentences. Inmates serving sentences longer than two years may be eligible for parole.
- 6) Returns:** Offenders who violate the conditions of their community release may be returned to prison to complete the remainder of their sentences.
- 7) End of Sentence (EOS):** At the end of their sentences some offenders are required to complete a period of post-release supervision. Split-sentence offenders are supervised by the Judicial Branch's Office of Adult Probation. Offenders sentenced to special parole remain under DOC supervision.
- 8) Violation of Probation:** If an individual violates the terms of their probation, an arrest warrant must be issued, and the violator's case is returned to court.

TABLE 2 – DOC Population Counts, First of the Month

	2011	2011	2012	2011	% Change	
	Nov. 1st	Dec. 1st	Jan. 1st	Jan. 1st	Monthly	Annual
DOC Facility						
Federal/Other	152	149	145	139	-2.8%	4.3%
Sentenced	13,599	13,310	12,955	13,578	-2.7%	-4.6%
Special Parole	295	289	299	335	3.3%	-10.7%
Pre-trial	3,728	3,711	3,623	3,694	-2.4%	-1.9%
Total	17,774	17,459	17,022	17,746	-2.6%	-4.1%
DOC Community						
Transfer Parole	19	21	12	30	-75.0%	-60.0%
Parole/ Parcom Total	1,539	1,320	1,289	1,775	-2.4%	-27.4%
Parole	1,363	1,146	1,116	1,592	-2.7%	-29.9%
Parcom @ CT	176	174	173	183	-0.6%	-5.5%
Furlgh/Trans Place Tota	21	33	18	29	-83.3%	-37.9%
Furlough	13	23	12	9	-91.7%	33.3%
Trans Placement	8	10	6	20	-66.7%	-70.0%
Halfway House Total	1,085	1,098	1,091	1,080	-0.6%	1.0%
Comm Release	842	863	855	881	-0.9%	-3.0%
TS	19	18	16	16	-12.5%	0.0%
Parole	114	105	102	92	-2.9%	10.9%
Transfer Parole	0	1	0	2	-	-
Special Parole	110	111	118	89	5.9%	32.6%
TS Total	848	755	716	999	-5.4%	-28.3%
Special Parole	1,023	1,036	1,069	863	3.1%	23.9%
Total	4,535	4,263	4,195	4,776	-1.6%	-12.2%

TABLE 3 – DOC Admissions and Releases, Monthly Totals*

	2011	2011	2011	2010	% Change	
	Oct.	Nov.	Dec.	Dec.	Monthly	Annual
Admissions						
Federal/Other	84	83	100	101	20.5%	-1.0%
Returns	169	177	179	201	1.1%	-10.9%
Transfer Parole	2	2	0	0	-	-
Parole	46	54	38	56	-29.6%	-32.1%
Trans Plac/Furlough	1	0	1	0	-	-
HWH	35	28	46	34	64.3%	35.3%
TS	41	48	50	64	4.2%	-21.9%
Special Parole	44	45	44	46	-2.2%	-4.3%
New Sentence	379	333	223	238	-33.0%	-6.3%
VOP	114	79	59	54	-25.3%	9.3%
Pre-trial	1,665	1,523	1,516	1434	-0.5%	5.7%
Total	2,297	2,116	2,018	1,974	-4.6%	2.2%
Releases						
Transfer Parole	15	7	11	25	57.1%	-56.0%
Parole	193	147	162	171	10.2%	-5.3%
Trans Plac/Furlough	16	17	8	21	-52.9%	-61.9%
HWH	194	236	184	196	-22.0%	-6.1%
TS	251	212	222	251	4.7%	-11.6%
Special Parole	113	87	103	83	18.4%	24.1%
End of Sentence	940	1,351	1,096	936	-18.9%	17.1%
Total	1,722	2,057	1,786	1,683	-13.2%	6.1%
Pre-trial Releases*						
Did not return from Court	581	523	607	575	16.1%	5.6%
Release to Bond	459	465	481	492	3.4%	-2.2%

*Monthly totals are measured by occurrence, not by individual.

Board of Pardons and Parole

TABLE 4A – Paroles Granted, New cases

	Hearings	Granted	Rate
OCT	236	186	79%
NOV	199	157	79%
DEC	202	160	79%

The Board also considered 72 parole revocation and rescission cases during November.

TABLE 4B – Other Parole Hearings

	Revocations		Rescissions	
	Reparoled	Denied	Reparoled	Denied
OCT	40	21	20	15
NOV	36	21	11	4
DEC	59	30	12	10

Public Defender Services

Public Defender services are provided to "indigent" adults and juveniles at 37 field offices and by six specialized units around the state.

TABLE 5 – PD Cases, Appointed & Disposed

	Cases appointed		Cases disposed	
	GA	JD	GA	JD
SEPT	6,129	266	4,436	182
OCT	5,620	263	4,270	152
NOV	5,262	231	4,044	121

CSSD – Adult Probation

Court Support Services Division: Between October and November, the number of split sentence client starts increased from 451 to 716.

TABLE 6 – Monthly CSSD Direct Sentenced & Probationer Community Placements

	Community Based	Out-patient	Inpatient/Resident	Total
	SEPT	760	868	26
OCT	741	904	35	1,680
NOV	692	1,008	21	1,721

Pre-trial Diversion and Supervision

TABLE 7 –Pre-trial and split sentence starts

	Pre-trial Bail Case Starts	Client Supv. Starts	Split Sentence Starts
	OCT	2,244	2,285
NOV	2,114	2,483	716
DEC	2,010	2,305	642

TABLE 8 – The Jail Re-interview Program

	Interviews	Releases	Releases
	2011	2011	2010
OCT	1,307	751	797
NOV	1,108	701	726
DEC	1145	731	647

Data Notes: Figures are based on operational data available at the time of this report. Data in subsequent issues may not agree.

CHART 3 – Total Facility Population
January 1, 2011 to January 7, 2011

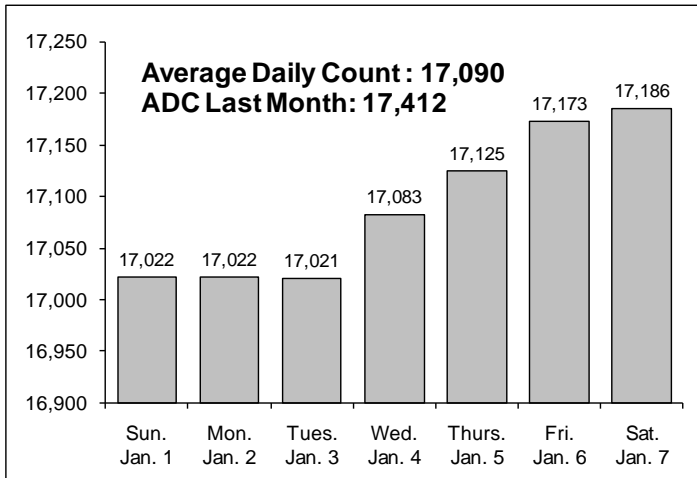


CHART 6 – Monthly DOC Admissions by Type
Nov. 2010 through Dec. 2011

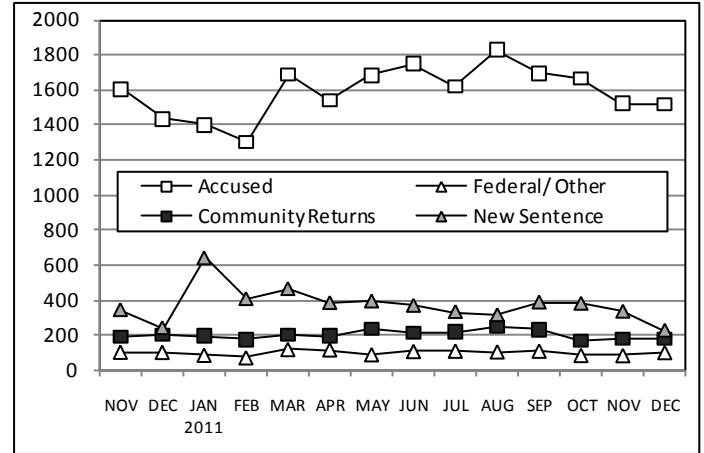


CHART 4 – Prison Population, first-of-month
January 1 through December 1

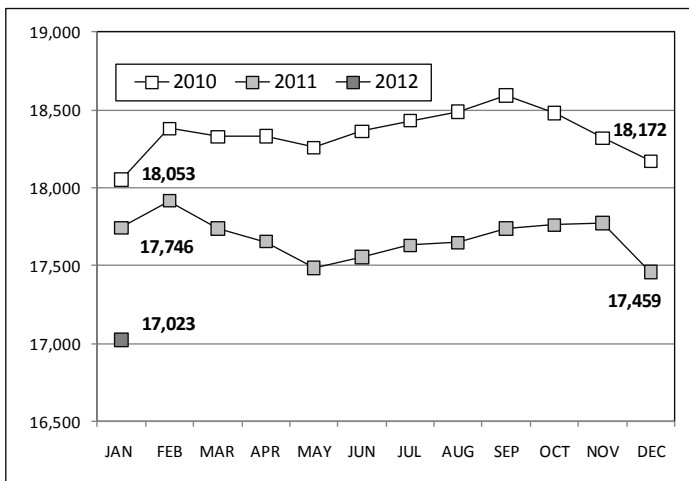


CHART 7 – Readmissions from Community Release
December 2011

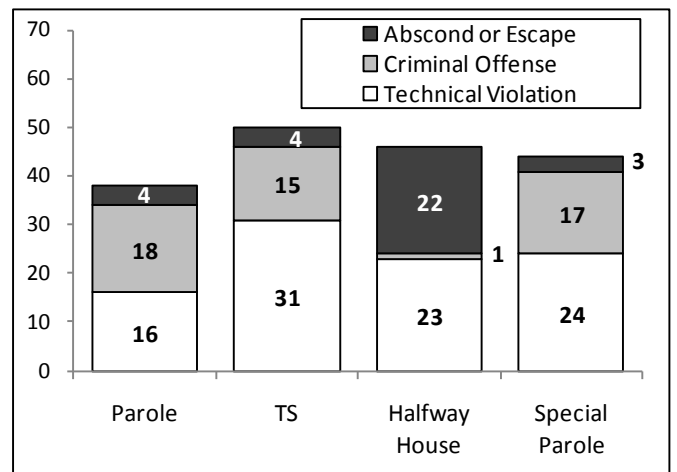


CHART 5 – Monthly, Statewide Criminal Arrests
2011 against the 3-year average

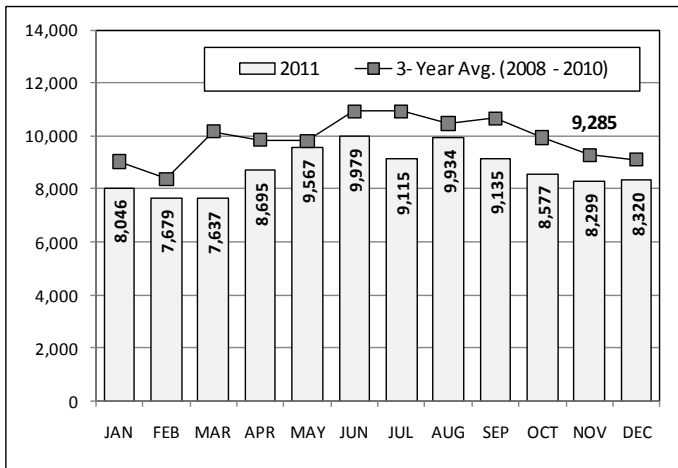
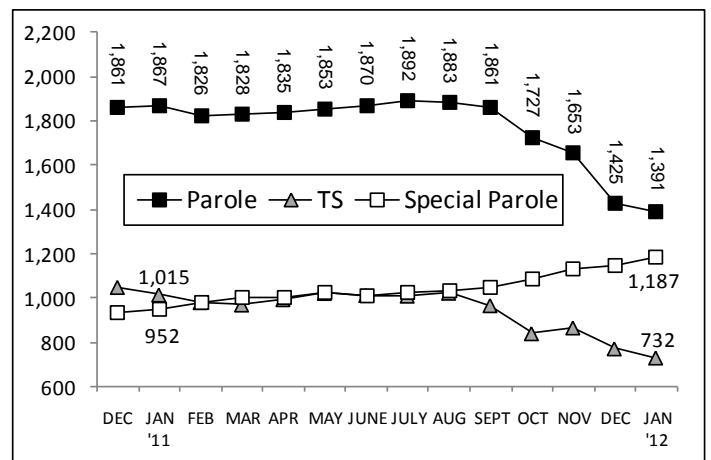


CHART 8 – Parole, TS and Special Parole, supervised cases
December 1, 2010 through January 1, 2012



Note: Data for all charts, with the exception of Chart 5, was supplied by CT DOC. Data for Chart 5 was provided by Court Operations. Data in Chart 8 includes all offenders under parole jurisdiction.