

OPM - Criminal Justice Policy & Planning Division Monthly Indicators Report



Published by the Connecticut Statistical Analysis Center at the Connecticut Office of Policy & Management

Highlights

- On February 1, 2012, 17,262 people were incarcerated in state prison facilities. The sentenced prison population, which had dipped below 13,000 in December, was at 13,130 by the end of January.
- OPM published a recidivism study this month that tracked sentenced offenders released from prison in 2005. The study found that almost 50% of the male offenders released in 2005 had been sentenced to prison for new offenses within five years.
- Total caseloads at the DOC parole office have declined considerably since August, 2011 (See Chart 8). Compared to last February, total caseloads were down 14%. Special parole caseloads, during the same period, jumped from 977 to 1,204, a 23% increase.
- The number of sentenced prison admits jumped from 223 in December 2011 to 592 in January 2012. This spike in sentenced admits is a typical feature of the seasonal ebbs and flows that affect the state's prison population.

OPM published two reports this month. The first is a 5-year study of recidivism among CT sex offenders. The second report contains the OPM's latest prison population projection through February 2013. Both reports are available online at OPM's Criminal Justice Policy & Planning Division website.

Prison Population Forecast

OPM has published a new prison population forecast for the coming year. This forecast model assumes that the number of prisoners will continue to decline as it has in the last four years. The rate of decline, however, is not expected to be as steep as those in 2009 or 2011.

During 2009, the state's prison population fell by 925 inmates. In 2011, the number prisoners declined by 724. OPM conservatively estimates that the prison population this year could drop by as many as 535 prisoners

TABLE 1 –Prison Population Forecast

	Actual (*Avg Daily Count)	OPM 2011 Forecast
FEB '12	17,224*	17,224
MAR	-	17,171
APR	-	17,172
MAY	-	17,100
JUN	-	17,143
JUL	-	17,213
AUG	-	17,238
SEP	-	17,263
OCT	-	17,238
NOV	-	17,121
DEC	-	17,013
JAN '13	-	16,587
FEB	-	16,756

The state's prison population follows regular seasonal cycles. During a typical year, the prison population hits its lowest level in late December. During January the prison population generally rebounds as the court business returns to normal levels after the holidays. In some years, the prison population peaks in February. In others, the population peaks during the late summer or in early fall.

In October, the DOC implemented its Risk Reduction Earned Credit (RREC) program. As a consequence, the prison population between October and January fell by 740 prisoners, triggering one of the steepest three-month declines in the inmate population in recent history. Going forward, the impact of RREC should diminish in coming months and releases should quickly return to their normal levels.

CHART 1 – Average Daily Inmate Count for the First Week of the Month
January 1, 2010 through February 1, 2012

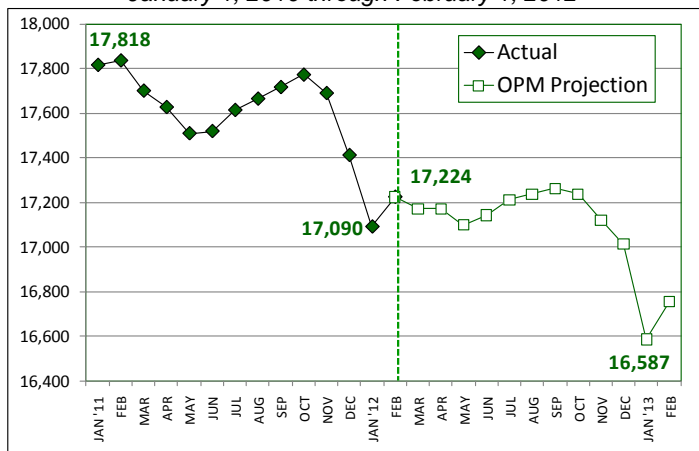
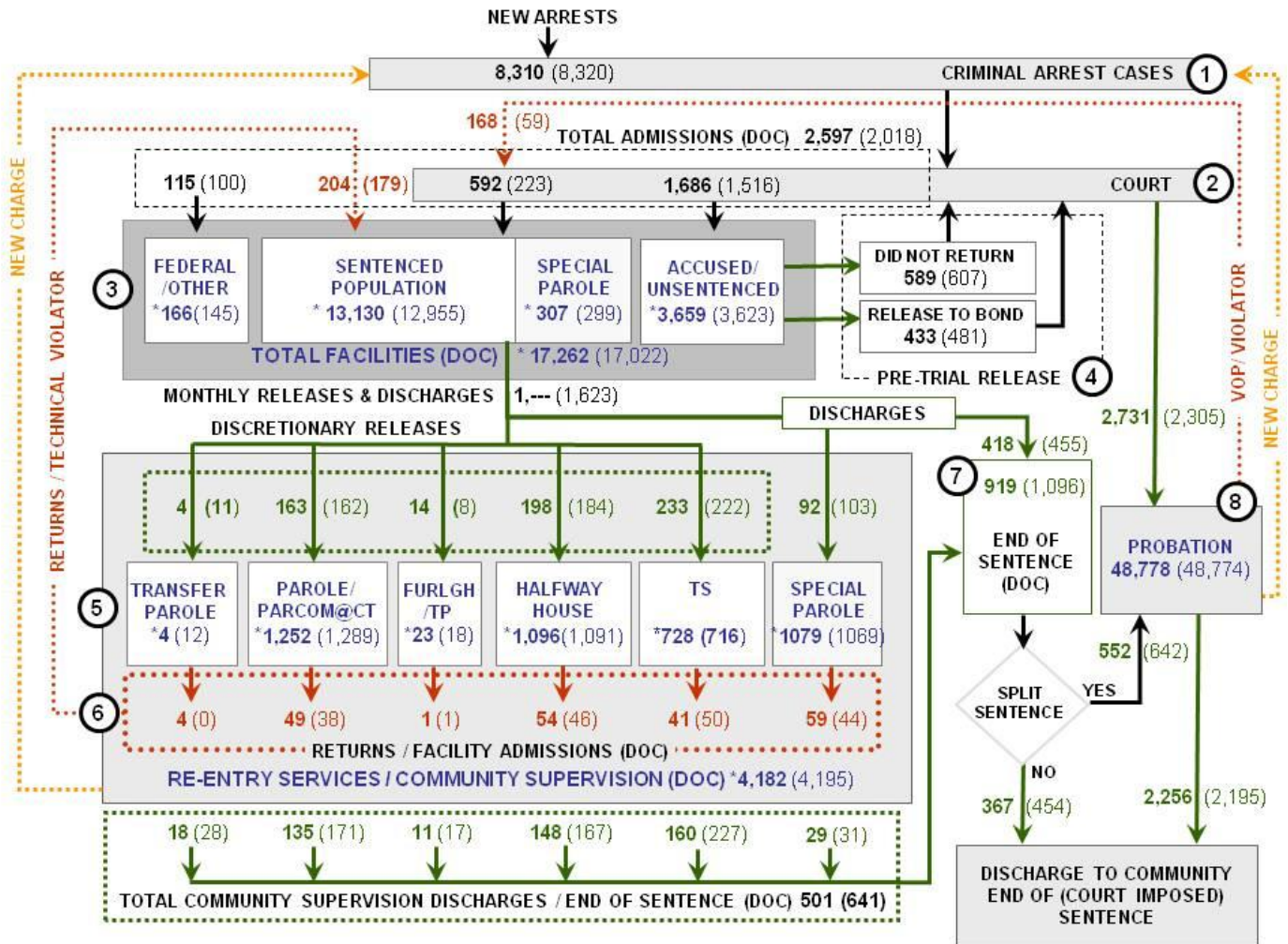


CHART 2 – Connecticut Criminal Justice System – Monthly Overview



Asterisks (*) indicate the population count on February 1, 2012.
 Parentheses enclose figures for the previous month.

Sources: Arrest-Judicial/Court Operations; Court-Judicial/CSSD; Facility/Community Supervision-DOC

Unlike states that have county governments, the majority of agencies within Connecticut's criminal justice system are State agencies. The one exception is law enforcement, where there are over 90 local police departments and the Connecticut State Police.

- 1) Arrest:** An individual enters into the criminal justice system at the time of arrest.
- 2) Court:** At arraignment, judges review the charges filed against the accused and set a bail amount. Individuals who cannot meet bail conditions are incarcerated in DOC facilities to await trial. If the defendant is convicted, they may be sentenced to a range of sanctions including a fine, probation, or a term of incarceration.
- 3) DOC Facilities:** Total facility population at DOC contains the unsentenced population, which is awaiting trial, the sentenced population, inmates who have returned from special parole, and offenders charged in federal cases or non-state cases.
- 4) Pre-Trial Release:** Some defendants who are incarcerated pending the disposition of their cases may be eligible for a bond reduction or placement into pre-trial diversionary programs or treatment programs. These programs feature close coordination and cooperation between DOC, CSSD and the Department of Mental Health and Addiction Services (DMHAS).
- 5) Re-Entry Services:** Depending on several factors, an inmate may be eligible to complete a portion of his/her prison sentence under supervision of the DOC's Parole and Community Services Unit. Non-violent Inmates with sentences shorter than two years are eligible for Transitional Supervision after serving 50% of their sentences. Inmates serving sentences longer than two years may be eligible for parole.
- 6) Returns:** Offenders who violate the conditions of their community release may be returned to prison to complete the remainder of their sentences.
- 7) End of Sentence (EOS):** At the end of their sentences some offenders are required to complete a period of post-release supervision. Split-sentence offenders are supervised by the Judicial Branch's Office of Adult Probation. Offenders sentenced to special parole remain under DOC supervision.
- 8) Violation of Probation:** If an individual violates the terms of their probation, an arrest warrant must be issued, and the violator's case is returned to court.

TABLE 2 – DOC Population Counts, First of the Month

	2011	2011	2012	2011	% Change	
	Dec. 1st	Jan. 1st	Feb. 1st	Feb. 1st	Monthly	Annual
DOC Facility						
Federal/Other	149	145	166	141	12.7%	17.7%
Sentenced	13,310	12,955	13,130	13,795	1.3%	-4.8%
Special Parole	289	299	307	300	2.6%	2.3%
Pre-trial	3,711	3,623	3,659	3,679	1.0%	-0.5%
Total	17,459	17,022	17,262	17,915	1.4%	-3.6%
DOC Community						
Transfer Parole	21	12	4	32	-	-
Parole/ Parcom Total	1,320	1,289	1,252	1,745	-3.0%	-28.3%
Parole	1,146	1,116	1,083	1,567	-3.0%	-30.9%
Parcom @ CT	174	173	169	178	-2.4%	-5.1%
Furlgh/Trans Place Tota	33	18	23	27	21.7%	-14.8%
Furlough	23	12	16	4	25.0%	300.0%
Trans Placement	10	6	7	23	14.3%	-69.6%
Halfway House Total	1,098	1,091	1,096	1,072	0.5%	2.2%
Comm Release	863	855	857	884	0.2%	-3.1%
TS	18	16	15	16	-6.7%	-6.3%
Parole	105	102	99	81	-3.0%	22.2%
Transfer Parole	1	0	0	3	-	-
Special Parole	111	118	125	88	5.6%	42.0%
TS Total	755	716	728	965	1.6%	-24.6%
Special Parole	1,036	1,069	1,079	889	0.9%	21.4%
Total	4,263	4,195	4,182	4,730	-0.3%	-11.6%

TABLE 3 – DOC Admissions and Releases, Monthly Totals*

	2011	2011	2012	2011	% Change	
	Nov.	Dec.	Jan.	Jan.	Monthly	Annual
Admissions						
Federal/Other	83	100	115	85	15.0%	35.3%
Returns	177	179	204	192	14.0%	6.3%
Transfer Parole	2	0	0	1	-	-
Parole	54	38	49	59	28.9%	-16.9%
Trans Plac/Furlough	0	1	1	2	-	-
HWH	28	46	54	36	17.4%	50.0%
TS	48	50	41	60	-18.0%	-31.7%
Special Parole	45	44	59	34	34.1%	73.5%
New Sentence	333	223	592	642	165.5%	-7.8%
VOP	79	59	168	156	184.7%	7.7%
Pre-trial	1,523	1,516	1,686	1402	11.2%	20.3%
Total	2,116	2,018	2,597	2,321	28.7%	11.9%
Releases						
Transfer Parole	7	11	4	28	-63.6%	-85.7%
Parole	147	162	163	150	0.6%	8.7%
Trans Plac/Furlough	17	8	14	13	75.0%	7.7%
HWH	236	184	198	202	7.6%	-2.0%
TS	212	222	233	246	5.0%	-5.3%
Special Parole	87	103	92	81	-10.7%	13.6%
End of Sentence	1,351	1,096	919	894	-16.1%	2.8%
Total	2,057	1,786	1,623	1,614	-9.1%	0.6%
Pre-trial Releases*						
Did not return from Court	523	607	589	487	-3.0%	20.9%
Release to Bond	465	481	433	395	-10.0%	9.6%

*Monthly totals are measured by occurrence, not by individual.

Board of Pardons and Parole

TABLE 4A – Paroles Granted, New cases

	Hearings	Granted	Rate
NOV	199	157	79%
DEC	202	160	79%
JAN '12	124	92	74%

TABLE 4B – Other Parole Hearings

	Revocations		Rescissions	
	Reparoled	Denied	Reparoled	Denied
NOV	36	21	11	4
DEC	59	30	12	10
JAN '11	36	20	10	11

Public Defender Services

Public Defender (PD) services are provided to "indigent" adults and juveniles at 37 field offices and by six specialized units around the state.

TABLE 5 – PD Cases, Appointed & Disposed

	Cases appointed		Cases disposed	
	GA	JD	GA	JD
OCT	5,620	263	4,270	152
NOV	5,262	231	4,044	121
DEC '11	5,295	221	3,875	148

CSSD – Adult Probation

Court Support Services Division: Probation clients in Jan. 2012: 48,778; Jan. 2011: 51,712

TABLE 6 – Monthly CSSD Direct Sentenced & Probationer Community Placements

	Community Based	Out-patient	Inpatient/ Resident	Total
	OCT	741	904	35
NOV	692	1,008	21	1,721
DEC '11	930	1,279	26	2,235

Pre-trial Diversion and Supervision

TABLE 7 –Pre-trial and split sentence starts

	Pre-trial Case Starts	Bail Client Supv. Starts	Split Sentence Starts
	NOV	2,114	2,483
DEC	2,010	2,305	642
JAN '12	2,500	2,731	552

TABLE 8 – The Jail Re-interview Program

	Offenders interviewed	Offenders released	Releases 1 year ago
NOV '11	1,108	701	726
DEC	1,145	731	647
JAN '12	1,256	670	542

Data Notes: Figures are based on operational data available at the time of this report. Data in subsequent issues may not agree.

CHART 3 – Total Facility Population
February 1, 2012 to February 7, 2012

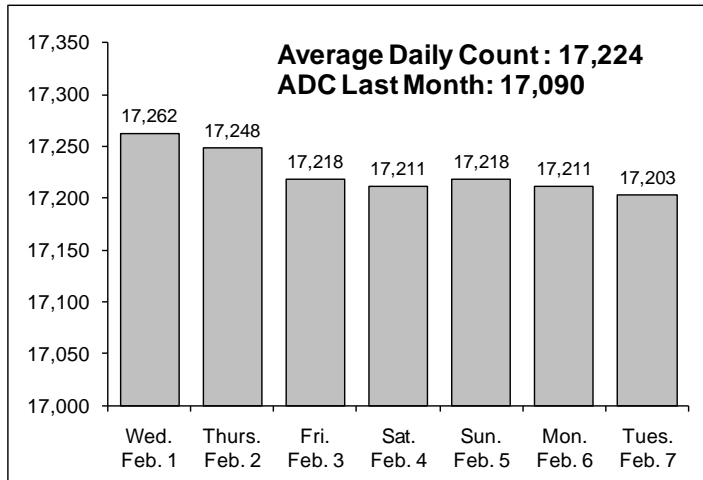


CHART 6 – Monthly DOC Admissions by Type
Dec. 2010 through Jan. 2012

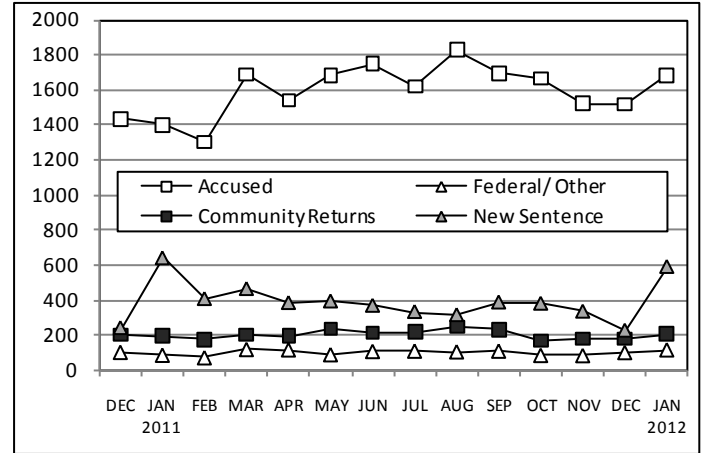


CHART 4 – Prison Population, first-of-month
January 1 through December 1

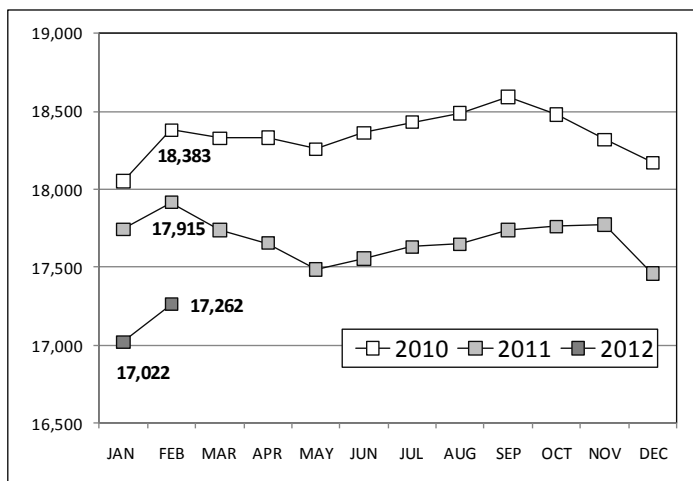


CHART 7 – Readmissions from Community Release
January 2012

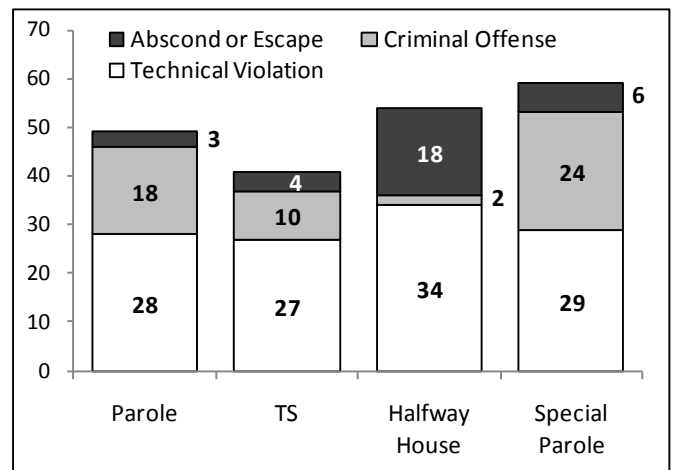


CHART 5 – Monthly, Statewide Criminal Arrests
2012, 2011 & 3-year average

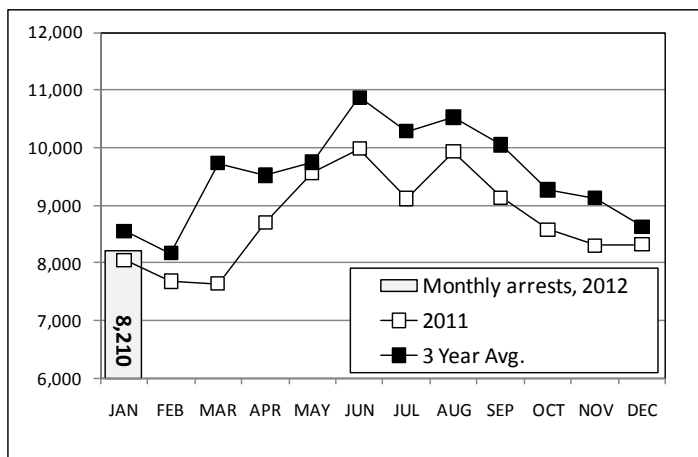
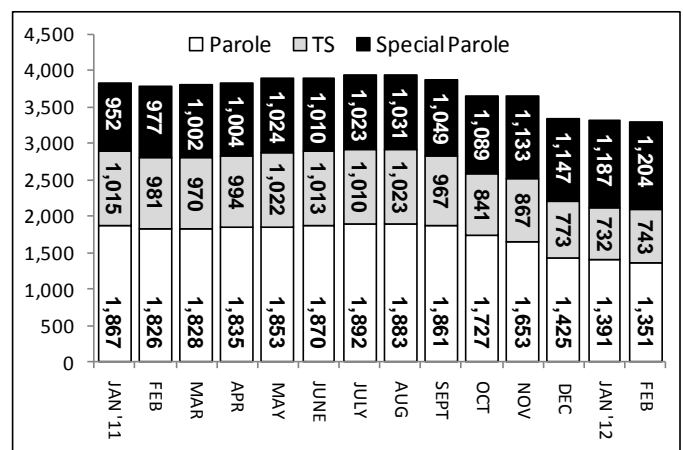


CHART 8 – Parole, TS and Special Parole, supervised cases
January 1, 2011 through February 1, 2012



Note: Data for all charts, with the exception of Chart 5, was supplied by CT DOC. Data for Chart 5 was provided by Court Operations. Data in Chart 8 includes all offenders under parole jurisdiction.