

Criminal Justice Policy & Planning Division Monthly Indicators Report



State of Connecticut Office of Policy and Management and the Connecticut Statistical Analysis Center

Highlights

- On November 1st, the state's prisons held 17,774 people. A month earlier, on October 1st, the inmate count stood at 17,764. Based on these two figures it would appear reasonable to assume that the prison population remained relatively flat during October. In actual fact, the prison population over the last month has seen some significant movement. Between October 15th and November 7th, the prison population declined by 227 falling from 17,851 to 17,624.
- Several factors appear to have combined to edge the prison count dramatically downward in recent weeks. The application of risk reduction credits to inmates in October was a certainly major factor in reducing the facility population. Seasonal factors also typically contribute to declines in the prison count in October.
- Much of Connecticut lost power on Saturday, Oct 29, 2011 and significant portions of the state remained dark for almost a week. As a result, courts in a number of jurisdictions were closed. Although hard to quantify, reduced court operations almost certainly contributed to drop in the prison population during the first week in November.
- Releases to Special Parole were 74% higher during October 2011 than they were last year (See Table 3). Special Parole caseloads have been rising steadily for almost 2 years.

Prison inmate count on November 14th, 2011: 17,578.

Prison Population Forecast

As projected, the prison population, measured by the average daily count of prisoners during the first week of the month, dipped between October and November. In fact, October was the first month since April in which the prison population declined.

In September, 260 offenders in community supervision programs completed their prison sentences early because of the DOC's risk reduction earned credit program. During October, credits were applied to 251 offenders; 173 in community supervision and 78 in prison facilities. Through the first week of November, 81 offenders were released from prison early as a result of the reduced risk credit program. Another 55 offenders on community supervision also received credits that allowed them to complete their sentences early.

In the coming months, OPM and DOC will monitor offender releases through the risk reduction earned credit program. At this point it would be premature to predict the program's effect on the OPM forecast.

TABLE 1 –Prison Population Forecast

	Actual (*Avg Daily Count)	OPM 2011 Forecast	Diff. %
FEB '11	17,838*	-	-
MAR	17,702*	17,960	-1.4%
APR	17,628*	17,910	-1.6%
MAY	17,510*	17,792	-1.6%
JUN	17,520*	17,787	-1.5%
JUL	17,615*	17,786	-1.0%
AUG	17,666*	17,810	-0.8%
SEP	17,718*	17,950	-1.3%
OCT	17,774*	18,035	-1.4%
NOV	17,691*	17,931	-1.3%
DEC	-	17,758	-
JAN '12	-	17,375	-
FEB	-	17,640	-

* Average Daily Count, first week of month

CHART 1 – Average Daily Count for the First Week of the Month
January 1, 2010 through February 1, 2012

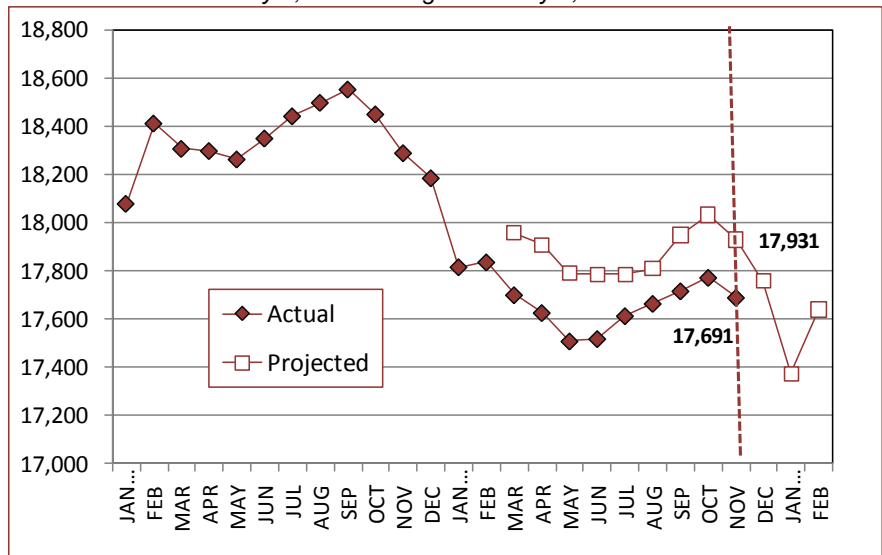
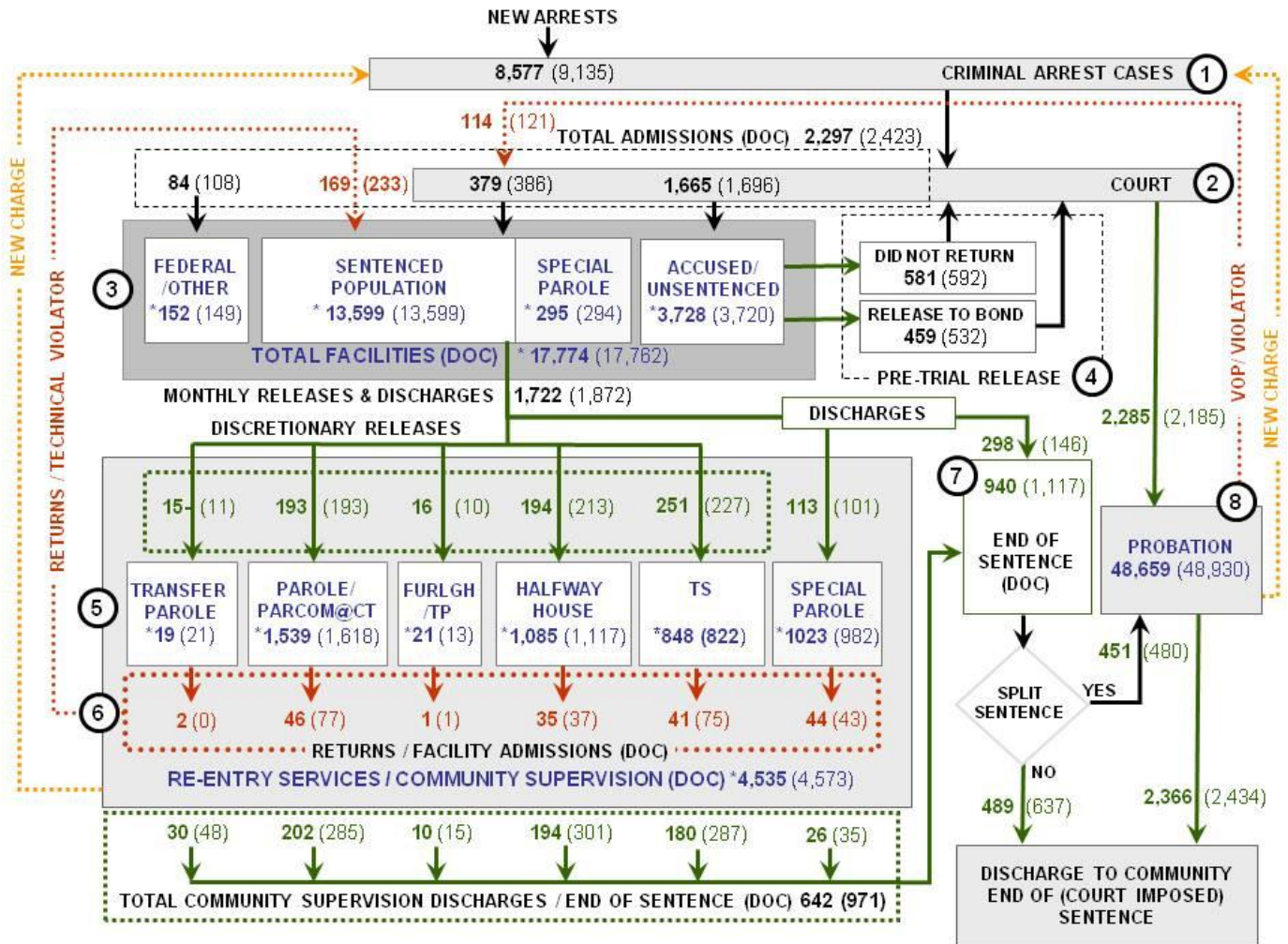


CHART 2 – Connecticut Criminal Justice System – Monthly Overview



Asterisks (*) indicate the population count on November 1, 2011.
 Parentheses enclose figures for the previous month.
 Sources: Arrest-Judicial/Court Operations; Court-Judicial/CSSD; Facility/Community Supervision-DOC

Unlike states that have county governments, the majority of agencies within Connecticut's criminal justice system are State agencies. The one exception is law enforcement, where there are over 90 local police departments and the Connecticut State Police.

- 1) Arrest:** An individual enters into the criminal justice system at the time of arrest.
- 2) Court:** At arraignment, judges review the charges filed against the accused and set a bail amount. Individuals who cannot meet bail conditions are incarcerated in DOC facilities to await trial. If the defendant is convicted, they may be sentenced to a range of sanctions including a fine, probation, or a term of incarceration.
- 3) DOC Facilities:** Total facility population at DOC contains the unsentenced population, which is awaiting trial, the sentenced population, inmates who have returned from special parole, and offenders charged in federal cases or non-state cases.
- 4) Pre-Trial Release:** Some defendants who are incarcerated pending the disposition of their cases may be eligible for a bond reduction or placement into pre-trial diversionary programs or treatment programs. These programs feature close coordination and cooperation between DOC, CSSD and the Department of Mental Health and Addiction Services (DMHAS).
- 5) Re-Entry Services:** Depending on several factors, an inmate may be eligible to complete a portion of his/her prison sentence under supervision of the DOC's Parole and Community Services Unit. Non-violent Inmates with sentences shorter than two years are eligible for Transitional Supervision after serving 50% of their sentences. Inmates serving sentences longer than two years may be eligible for parole.
- 6) Returns:** Offenders who violate the conditions of their community release may be returned to prison to complete the remainder of their sentences.
- 7) End of Sentence (EOS):** At the end of their sentences some offenders are required to complete a period of post-release supervision. Split-sentence offenders are supervised by the Judicial Branch's Office of Adult Probation. Offenders sentenced to special parole remain under DOC supervision.
- 8) Violation of Probation:** If an individual violates the terms of their probation, an arrest warrant must be issued, and the violator's case is returned to court.

TABLE 2 – DOC Population Counts, First of the Month

	2010	2011	2011	2010	% Change	
	Sept. 1st	Oct. 1st	Nov. 1st	Nov. 1st	Monthly	Annual
DOC Facility						
Federal/Other	136	149	152	148	2.0%	2.7%
Sentenced	13,482	13,599	13,599	13,831	0.0%	-1.7%
Special Parole	322	294	295	347	0.3%	-15.0%
Accused/Unsentenced	3,799	3,720	3,728	3,994	0.2%	-6.7%
Total	17,739	17,762	17,774	18,320	0.1%	-3.0%
DOC Community						
Transfer Parole	26	21	19	41	-10.5%	-53.7%
Parole/ Parcom Total	1,756	1,618	1,539	1,770	-5.1%	-13.1%
Parole	1,579	1,443	1,363	1,593	-5.9%	-14.4%
Parcom @ CT	177	175	176	177	0.6%	-0.6%
Furlgh/Trans Place Total	22	13	21	29	38.1%	-27.6%
Furlough	11	6	13	8	53.8%	62.5%
Trans Placement	11	7	8	21	12.5%	-61.9%
Halfway House Total	1,124	1,117	1,085	1,090	-2.9%	-0.5%
Comm Release	908	881	842	896	-4.6%	-6.0%
TS	19	19	19	16	0.0%	18.8%
Parole	105	109	114	94	4.4%	21.3%
Transfer Parole	1	1	0	1	-	-
Special Parole	91	107	110	83	2.7%	32.5%
TS Total	948	822	848	1,026	3.1%	-17.3%
Special Parole	958	982	1,023	833	4.0%	22.8%
Total	4,834	4,573	4,535	4,789	-0.8%	-5.3%

TABLE 3 – DOC Admissions and Releases, Monthly Totals*

	2010	2010	2011	2010	% Change	
	Aug.	Sept.	Oct.	Oct.	Monthly	Annual
Admissions						
Federal/Other	104	108	84	104	-22.2%	-19.2%
Returns	248	233	169	210	-27.5%	-19.5%
Transfer Parole	1	0	2	0	-	-
Parole	73	77	46	57	-40.3%	-19.3%
Trans Plac/Furlough	3	1	1	0	-	-
HWH	49	37	35	45	-5.4%	-22.2%
TS	72	75	41	60	-45.3%	-31.7%
Special Parole	50	43	44	48	2.3%	-8.3%
New Sentence	313	386	379	401	-1.8%	-5.5%
VOP	89	121	114	90	-5.8%	26.7%
Accused	1,828	1,696	1,665	1604	-1.8%	3.8%
Total	2,493	2,423	2,297	2,319	-5.2%	-0.9%
Releases						
Transfer Parole	17	11	15	21	36.4%	-28.6%
Parole	176	193	193	165	0.0%	17.0%
Trans Plac/Furlough	17	10	16	12	60.0%	33.3%
HWH	208	213	194	164	-8.9%	18.3%
TS	256	227	251	278	10.6%	-9.7%
Special Parole	79	101	113	65	11.9%	73.8%
End of Sentence	864	1,117	940	899	-15.8%	4.6%
Total	1,617	1,872	1,722	1,604	-8.0%	7.4%
Pre-trial Releases*						
Did not return from Court	548	592	581	635	-1.9%	-8.5%
Release to Bond	528	532	459	551	-13.7%	-16.7%

*Monthly totals are measured by occurrence, not by individual.

Board of Pardons and Parole

Parole hearings

The Board considered 236 new parole cases at full panel hearings in October. In addition, 96 parole violation cases were reviewed. Sixty (60) of these cases resulted in offenders being reparaoled. Of these, 40 cases had been for parole revocations; 20 were for parole rescissions.

TABLE 4A – Paroles Granted, New cases

	Hearings	Granted	Rate
AUG	181	143	79%
SEP	225	180	80%
OCT	236	186	79%

Public Defender Services

Public Defender services are provided to "indigent" adults and juveniles at 37 field offices and by six specialized units around the state.

TABLE 5 – PD Cases, Appointed & Disposed

	Cases appointed		Cases disposed	
	GA	JD	GA	JD
JUL	5,604	260	3,821	157
AUG	6,462	255	4,205	150
SEPT	6,129	266	4,436	182

CSSD – Adult Probation

Court Support Services Division: total adult probation caseload for October 2011: 48,659. In September there were 48,930 probation cases.

TABLE 6 – Monthly CSSD Direct Sentenced & Probationer Community Placements

	Community Based	Out-patient	Inpatient/ Resident	Total
	JULY	984	1,263	34
AUG	713	994	24	1,731
SEPT	760	868	26	1,654

Pre-trial Diversion and Supervision

TABLE 7 – Pre-trial Diversion & Supervision

	Pre-trial Bail Case Starts	Client Supv. Starts
	AUG	2,657
SEPT	2,301	2,185
OCT	2,244	2,285

TABLE 8 – The Jail Re-interview Program

	Interviews	Releases	Releases
	2011	2011	2010
AUG	1,349	716	712
SEPT	1,377	807	694
OCT	1,307	751	795

Data Notes: Figures are based on operational data available at the time of this report. Data in subsequent issues may not agree.

CHART 3 – Total Facility Population
November 1, 2011 to November 7, 2011

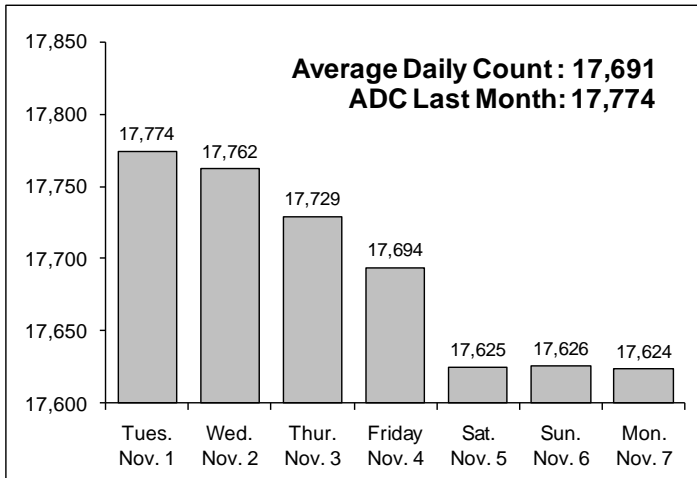


CHART 6 – Monthly DOC Admissions by Type
Sept. 2010 through Oct. 2011

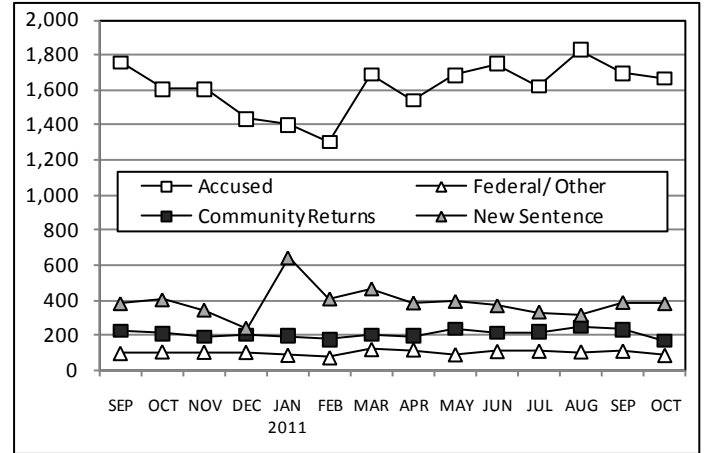


CHART 4 – Prison Population, first-of-month
January 1 through December 1

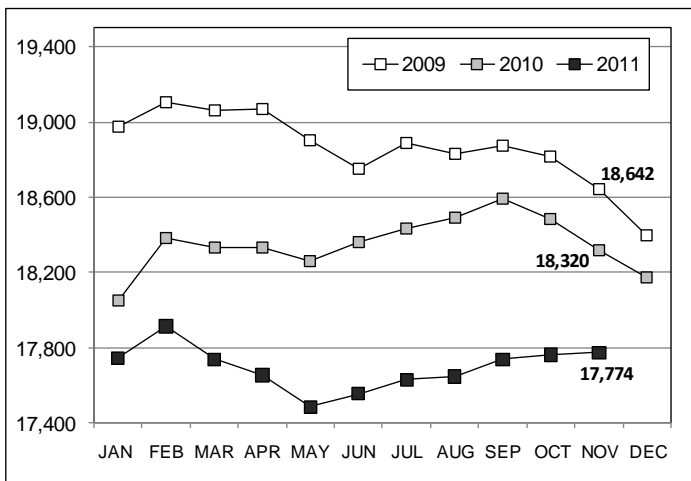


CHART 7 – Readmissions from Community Release
October 2011

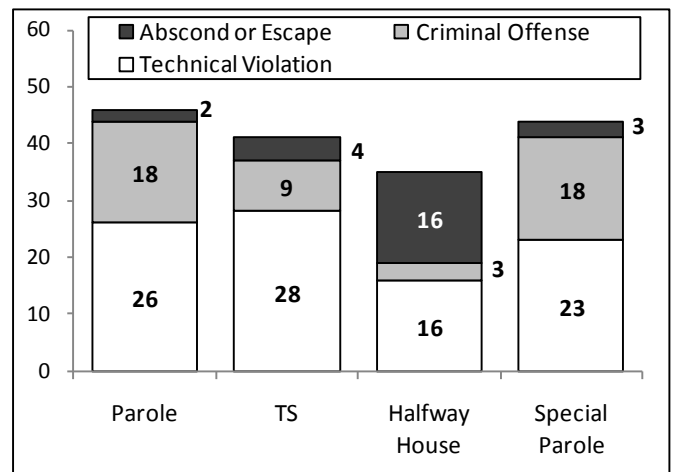


CHART 5 – Monthly, Statewide Criminal Arrests
2011 against the 3-year average

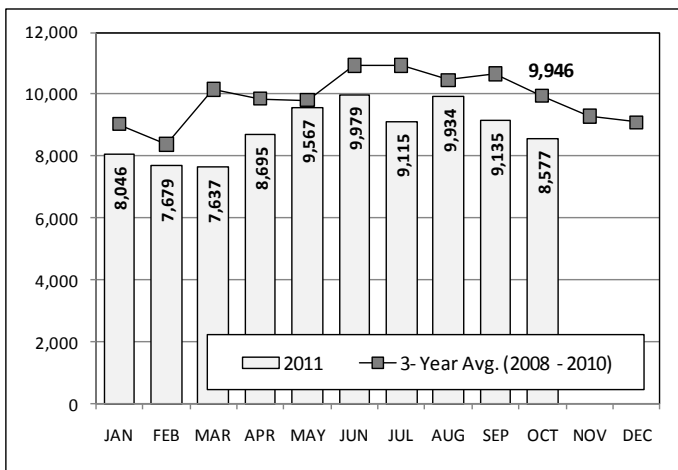
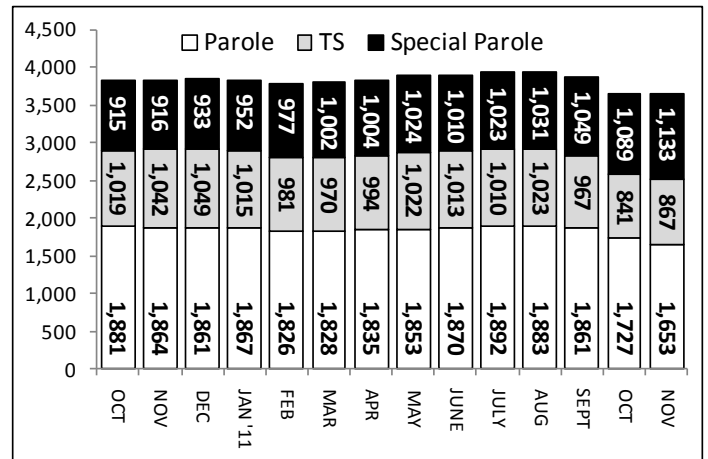


CHART 8 – Parole, TS and Special Parole, supervised cases
October 1, 2010 through November 1, 2011



Note: Data for all charts, with the exception of Chart 5, was supplied by CT DOC. Data for Chart 5 was provided by Court Operations. Data in Chart 8 includes all offenders under parole jurisdiction.