

# Criminal Justice Policy & Planning Division Monthly Indicators Report



Monthly Indicators are available online at: [www.ct.gov/OPM/CriminalJustice/Research](http://www.ct.gov/OPM/CriminalJustice/Research)

## Highlights

- 17,739 people were incarcerated in the state on March 1, 2011. This figure is the lowest March 1<sup>st</sup> inmate count since 2001 when 17,460 people were in prison.
- The total prison population on March 1<sup>st</sup> was down by 3.2% from last year. There were 348 fewer sentenced prisoners, 2.3% decline, and 220 fewer accused prisoners, a 5.8% drop (See Table 2).
- Monthly prison admissions of accused offenders have fallen dramatically since August 2010 (See Chart 6). At this time, the reason for this drop is not well understood. OPM has had preliminary discussions on this topic with CSSD. We hope to explain these declines shortly.
- Special Parole is a sanction that is almost unique to Connecticut. Offenders sentenced to special parole are required to complete a separate term under parole supervision after completing their prison sentences. Unlike split-sentence offenders on probation, special parolees can be remanded to prison immediately. Since last year, the number of special parolees in the community has increased by 9.7% (See Table 2).

*In coming months, The Monthly Indicators Report will begin publishing more data on the "front end" of the criminal justice system. OPM and CSSD are presently in discussions to determine what data would provide readers with a more complete and accurate picture of the pre-trial, accused population.*

## Prison Population Forecast

OPM's 2011 prison population forecast is off to an inauspicious start. In February, OPM projected that the Average Daily Count (ADC) for first week in March would be 17,960. The actual ADC came in 1.4 % lower than estimate, a difference of 158 prisoners.

Over the last 20 years, the prison population has declined during February by about 0.2%. During February 2011, the prison population declined by a full percentage point, five times the expected rate. In fact, the prison population drop in February is the third largest in 20 years. The last time the prison population declined faster during February was in 2003; before that it was in 1992. Prison admissions were also down, by 13.8%, in February compared to 2010 (See Table 3).

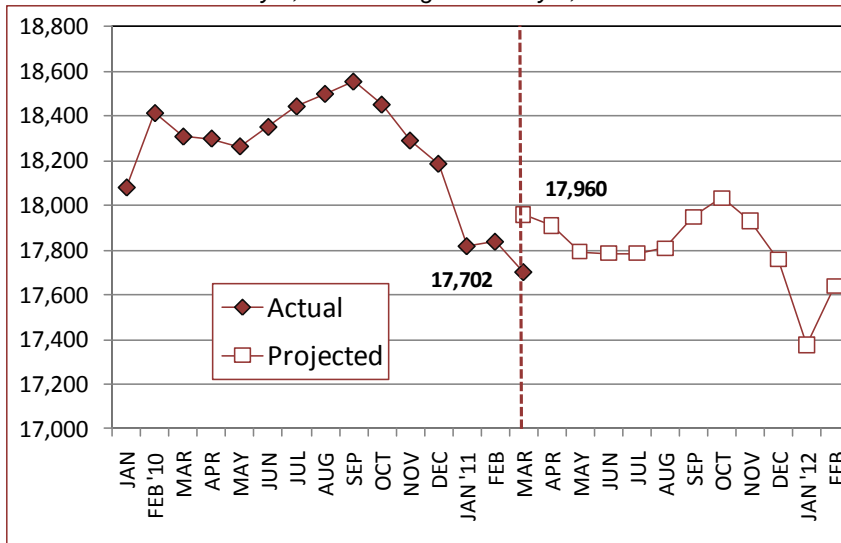
A declining prison population at this time of the year could be a harbinger of a lower-than-anticipated prison population for the remainder of the year. OPM will continue to track the data and attempt to identify factors driving the size of the inmate population.

TABLE 1 –Prison Population Forecast

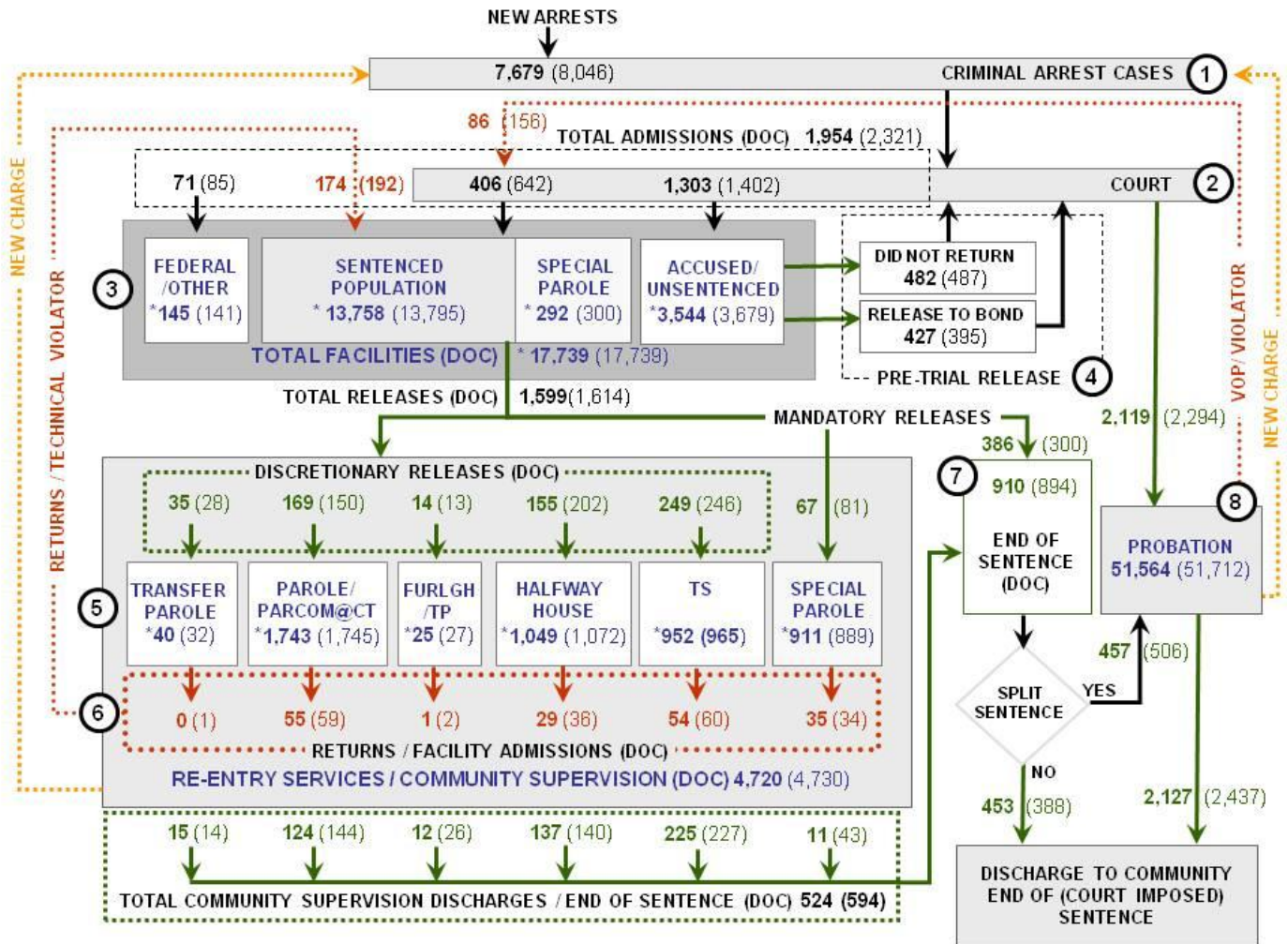
	Actual (*Avg Daily Count)	OPM 2011 Forecast	Diff. %
FEB '11	17,838*	-	-
MAR	17,702*	17,960	-1.4%
APR	-	17,910	-
MAY	-	17,792	-
JUN	-	17,787	-
JUL	-	17,786	-
AUG	-	17,810	-
SEP	-	17,950	-
OCT	-	18,035	-
NOV	-	17,931	-
DEC	-	17,758	-
JAN '12	-	17,375	-
FEB	-	17,640	-

\* Average Daily Count, first week of month

CHART 1 – Total DOC Facility Population, Actual and Projected  
January 1, 2010 through February 1, 2012



## CHART 2 – Connecticut Criminal Justice System – Monthly Overview



Asterisks (\*) indicate the population count on March 1, 2011.  
 Parentheses enclose figures for the previous month.

Sources: Arrest-Judicial/Court Operations; Court-Judicial/CSSD; Facility/Community Supervision-DOC

Unlike states that have county governments, the majority of agencies within Connecticut's criminal justice system are State agencies. The one exception is law enforcement, where there are over 90 local police departments and the Connecticut State Police.

- 1) Arrest:** An individual enters into the criminal justice system at the time of arrest.
- 2) Court:** At arraignment, judges review the charges filed against the accused and set a bail amount. Individuals who cannot meet bail conditions are incarcerated in DOC facilities to await trial. If the defendant is convicted, they may be sentenced to a range of sanctions including a fine, probation, or a term of incarceration.
- 3) DOC Facilities:** Total facility population at DOC contains the unsentenced population, which is awaiting trial, the sentenced population, inmates who have returned from special parole, and offenders charged in federal cases or non-state cases.
- 4) Pre-Trial Release:** Some defendants who are incarcerated pending the disposition of their cases may be eligible for a bond reduction or placement into pre-trial diversionary programs or treatment programs. These programs feature close coordination and cooperation between DOC, CSSD and the Department of Mental Health and Addiction Services (DMHAS).
- 5) Re-Entry Services:** Depending on several factors, an inmate may be eligible to complete a portion of his/her prison sentence under supervision of the DOC's Parole and Community Services Unit. Non-violent Inmates with sentences shorter than two years are eligible for Transitional Supervision after serving 50% of their sentences. Inmates serving sentences longer than two years may be eligible for parole.
- 6) Returns:** Offenders who violate the conditions of their community release may be returned to prison to complete the remainder of their sentences.
- 7) End of Sentence (EOS):** At the end of their sentences some offenders are required to complete a period of post-release supervision. Split-sentence offenders are supervised by the Judicial Branch's Office of Adult Probation. Offenders sentenced to special parole remain under DOC supervision.
- 8) Violation of Probation:** If an individual violates the terms of their probation, an arrest warrant must be issued, and the violator's case is returned to court.

TABLE 2 – DOC Population Counts, First of the Month

	2010	2011	2011	2010	% Change	
	Jan. 1st	Feb. 1st	Mar. 1st	Mar. 1st	Monthly	Annual
<b>DOC Facility</b>						
Federal/Other	139	141	145	165	2.8%	-12.1%
Sentenced	13,578	13,795	13,758	14,106	-0.3%	-2.5%
Special Parole	335	300	292	295	-2.7%	-1.0%
Accused/Unsentenced	3,694	3,679	3,544	3,764	-3.8%	-5.8%
<b>Total</b>	<b>17,746</b>	<b>17,915</b>	<b>17,739</b>	<b>18,330</b>	<b>-1.0%</b>	<b>-3.2%</b>
<b>DOC Community</b>						
Transfer Parole	30	32	40	53	20.0%	-24.5%
Parole/ Parcom Total	1,775	1,745	1,743	1,777	-0.1%	-1.9%
Parole	1,592	1,567	1,565	1,628	-0.1%	-3.9%
Parcom @ CT	183	178	178	149	0.0%	19.5%
Furlgh/Trans Place Total	29	27	25	66	-8.0%	-62.1%
Furlough	9	4	5	41	20.0%	-87.8%
Trans Placement	20	23	20	25	-15.0%	-20.0%
Halfway House Total	1,080	1,072	1,049	1,040	-2.2%	0.9%
Comm Release	881	884	855	864	-3.4%	-1.0%
TS	16	16	18	23	11.1%	-21.7%
Parole	92	81	85	87	4.7%	-2.3%
Transfer Parole	2	3	0	0	-	-
Special Parole	89	88	91	66	3.3%	37.9%
TS Total	999	965	952	921	-1.4%	3.4%
Special Parole	863	889	911	847	2.4%	7.6%
<b>Total</b>	<b>4,776</b>	<b>4,730</b>	<b>4,720</b>	<b>4,704</b>	<b>-0.2%</b>	<b>0.3%</b>

TABLE 3 – DOC Admissions and Releases, Monthly Totals

	2010	2010	2011	2010	% Change	
	Dec.	Jan.	Feb.	Feb.	Monthly	Annual
<b>Admissions</b>						
Federal/Other	101	85	71	72	-16.5%	-1.4%
Returns	201	192	174	216	-9.4%	-19.4%
Transfer Parole	0	1	0	0	-	-
Parole	56	59	55	71	-6.8%	-22.5%
Trans Plac/Furlough	0	2	1	3	-	-
HWH	34	36	29	42	-19.4%	-31.0%
TS	64	60	54	57	-10.0%	-5.3%
Special Parole	46	34	35	43	2.9%	-18.6%
New Sentence	238	642	406	412	-36.8%	-1.5%
VOP	54	156	86	106	-44.9%	-18.9%
Accused	1,434	1,402	1,303	1568	-7.1%	-16.9%
<b>Total</b>	<b>1,974</b>	<b>2,321</b>	<b>1,954</b>	<b>2,268</b>	<b>-15.8%</b>	<b>-13.8%</b>
<b>Releases</b>						
Transfer Parole	25	28	35	28	25.0%	25.0%
Parole	171	150	169	177	12.7%	-4.5%
Trans Plac/Furlough	21	13	14	72	7.7%	-80.6%
HWH	196	202	155	185	-23.3%	-16.2%
TS	251	246	249	205	1.2%	21.5%
Special Parole	83	81	67	54	-17.3%	24.1%
End of Sentence	936	894	910	884	1.8%	2.9%
<b>Total</b>	<b>1,683</b>	<b>1,614</b>	<b>1,599</b>	<b>1,605</b>	<b>-0.9%</b>	<b>-0.4%</b>
<b>Pre-trial Releases*</b>						
Did not return from Court	575	487	482	543	-1.0%	-11.2%
Release to Bond	492	395	427	586	8.1%	-27.1%

\*Monthly totals are measured by occurrence, not by individual.

**Parole**

**Paroles and Parole hearings**

The Board considered 240 parole cases at full panel hearings in February. In addition, the Board considered an additional 139 parole violation cases. Seventy-five (75) of these cases resulted in offenders being reparaed; 50 cases had been for revocations; 25 were for rescissions.

TABLE 4A –Paroles Granted, Monthly

	Hearings	Granted	Rate
DEC	256	214	84%
JAN '11	302	248	82%
FEB	240	188	78%

Data Notes: Figures are based on the data available at the time of this report. Data in subsequent issues may not agree.

The Board of Pardons and Paroles schedules parole hearing dates up to 18 months before an offender's eligibility date. This should allow the Board to have a greater impact on offender programming while the offender remains incarcerated. It should also provide DOC with more time to develop appropriate reintegration plans for each parolee. If properly implemented, this change should reduce the number of offenders that are incarcerated beyond their parole eligibility dates.

TABLE 4B –Transfer Parole Cases

	Reviewed	Granted	Denied	Continued	Rate
DEC	223	59	151	13	26%
JAN '11	307	61	218	28	20%
FEB	230	66	145	19	29%

**Probation**

**Court Support Services Division:** total client caseload for February 2011: 51,564; January 2011 caseloads: 51,712)

TABLE 5 – Monthly CSSD Direct Sentenced & Probationer Community Placements

	Community Based	Out-patient	Inpatient/ Resident	Total
NOV	1,185	1,026	24	2,235
DEC	1,068	999	16	2,083
JAN '11	1,303	858	91	2,180

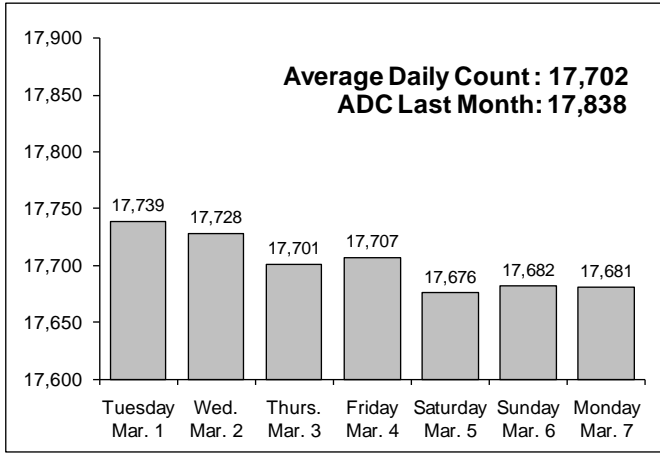
Figures are based on the latest data available at publication time. Figures in subsequent issues may not agree with those published here.

**Pre-trial Diversion and Supervision**

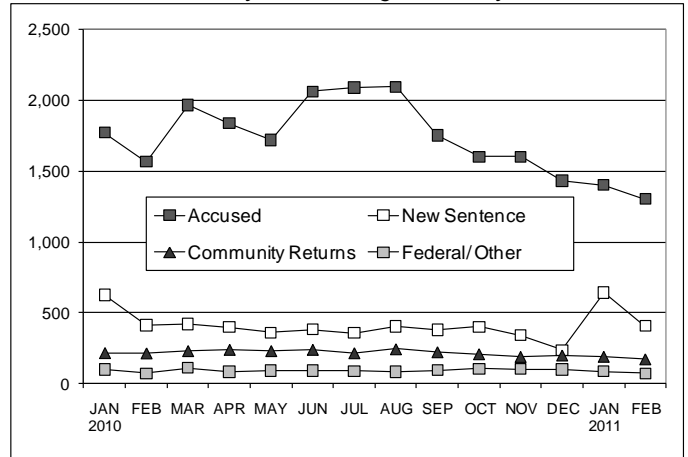
TABLE 6 – Pre-trial Diversion & Supervision

	Pre-trial Bail Case Starts	Client Supv. Starts
DEC	2,226	2,138
JAN '11	2,389	2,294
FEB	2,109	2,119

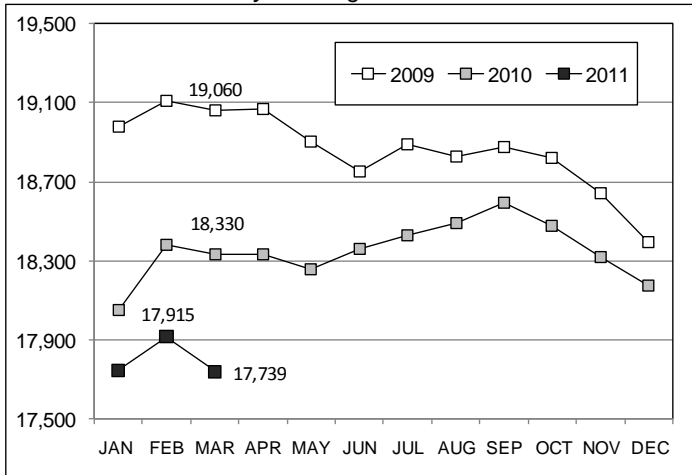
**CHART 3 – Snapshot Daily DOC Facility Population**  
 March 1, 2011 to March 7, 2011



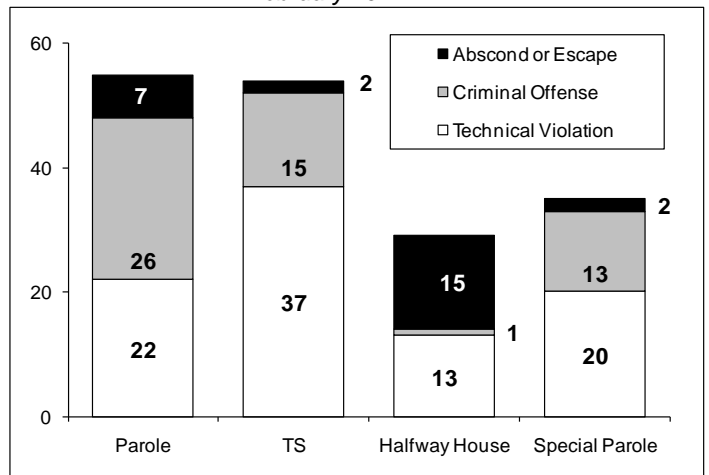
**CHART 6 – Monthly DOC Admissions by Type**  
 January 2010 through February 2011



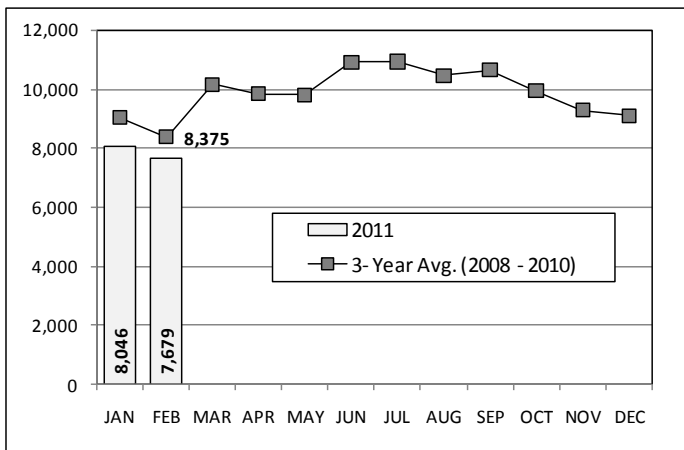
**CHART 4 – Prison Population, first-of-month**  
 January 1 through December 1



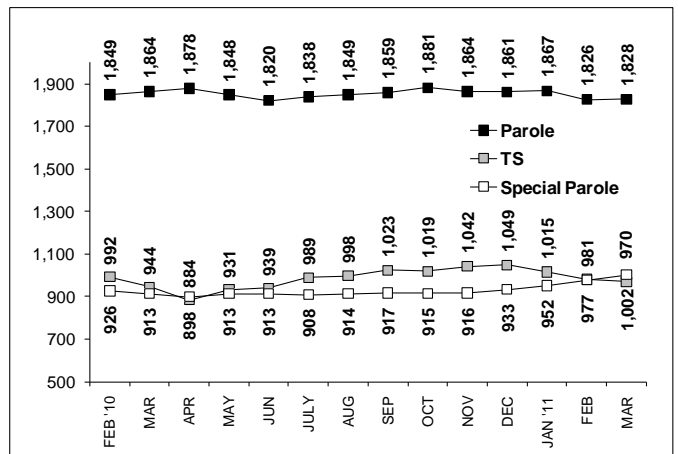
**CHART 7 – Monthly Readmissions from Community Release**  
 February 2011



**CHART 5 – Monthly Criminal Arrests**  
 2011 against the 3-year average



**CHART 8 – Parole, TS and Special Parole, supervised cases**  
 February 1, 2010 to March 1, 2011



Note: Data for all charts, with the exception of Chart 5, was supplied by CT DOC. Data for Chart 5 was provided by Court Operations. Data in Chart 8 includes all offenders under parole jurisdiction.