

Criminal Justice Policy & Planning Division Monthly Indicators Report



Monthly Indicators are available online at: www.ct.gov/OPM/CriminalJustice/Research

Highlights

- Although the prison system posted its first population gain in several months, this year's June 1st inmate total, 17,555, was the lowest since June 1st, 2001 when 17,543 people were incarcerated.
- The Department of Correction closed Gates CI in Niantic at the end of last month. About 200 former Gates inmates are currently being housed at an annex at York CI, the state's women's prison.
- In May, the Malloy administration rescinded its decision to close Bergin Correctional Institution in Mansfield. A final determination on the Bergin facility hinges on whether the state's unionized employees accept or reject contract concessions that were negotiated between union leaders and the Governor.
- Offenders who are granted transfer parole can be released to from prison up to 18 months before their official parole dates. Over the last year, approximately 65 offenders have been granted transfer paroles each month. The Board of Pardons and Paroles has cut back on the number of cases being considered for transfer parole as it reevaluates the entire transfer parole process.

In an effort to publish more information on the state's criminal justice system, The Monthly Indicator Reports now includes data supplied by the Division of Public Defender Services (See Table 5). Provided are the number of cases opened and disposed in the states GA and JD courts.

Prison Population Forecast

The state's prison population crept up moderately during May. The average daily count (ADC) for the first week in June was 17,520, only slightly higher than the May figure of 17,510.

The prison population has continued to trend downward since February. The overall the trend line is generally consistent with the trajectory plotted by OPM in its February prison population forecast.

As the warmer weather progresses, the prison population is expected to grow. Historical data reveals that most of this growth should be driven by increases in the size of the pre-trial population. Warmer weather and longer days generally translate into more criminal arrests and pre-trial prison admits. Bail decisions and the Jail Re-Interview Program are two of the most important tools the state has at its disposal to manage and mitigate the size of the pre-trial population. *The Monthly Indicators Report* is working to integrate data on these two programs into upcoming issues.

TABLE 1 –Prison Population Forecast

	Actual (*Avg Daily Count)	OPM 2011 Forecast	Diff. %
FEB '11	17,838*	-	-
MAR	17,702*	17,960	-1.4%
APR	17,628*	17,910	-1.6%
MAY	17,510*	17,792	-1.6%
JUN	17,520*	17,787	-1.5%
JUL	-	17,786	-
AUG	-	17,810	-
SEP	-	17,950	-
OCT	-	18,035	-
NOV	-	17,931	-
DEC	-	17,758	-
JAN '12	-	17,375	-
FEB	-	17,640	-

* Average Daily Count, first week of month

CHART 1 – Total DOC Facility Population, Actual and Projected
January 1, 2010 through February 1, 2012

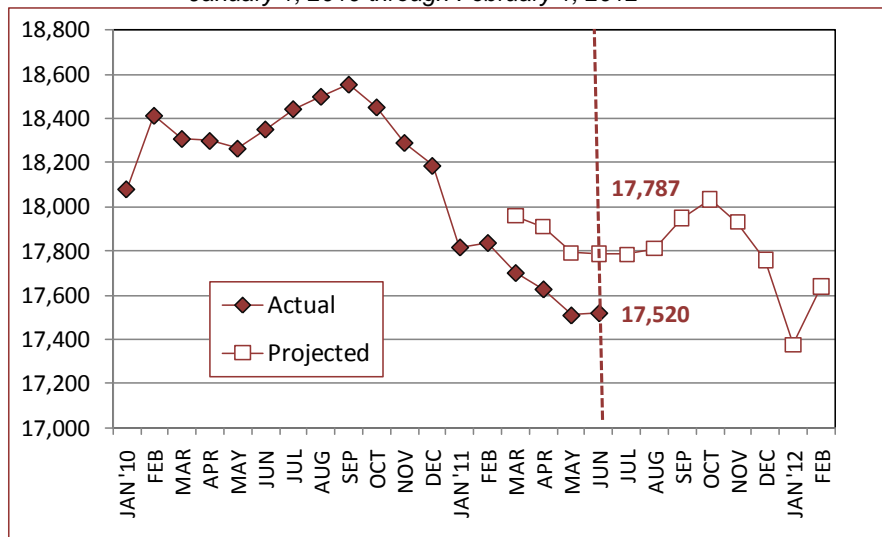
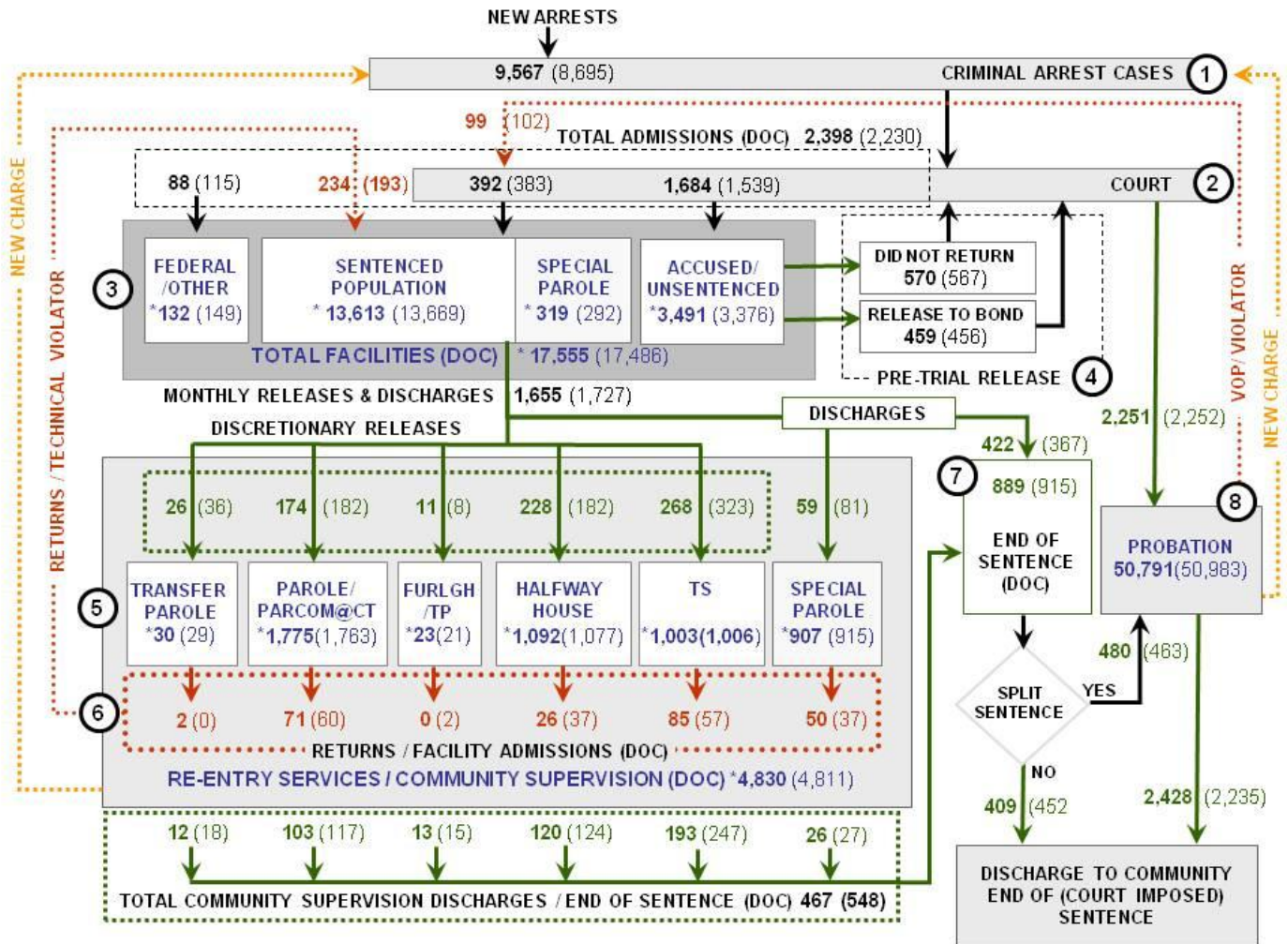


CHART 2 – Connecticut Criminal Justice System – Monthly Overview



Asterisks (*) indicate the population count on June 1, 2011.

Parentheses enclose figures for the previous month.

Sources: Arrest-Judicial/Court Operations; Court-Judicial/CSSD; Facility/Community Supervision-DOC

Unlike states that have county governments, the majority of agencies within Connecticut's criminal justice system are State agencies. The one exception is law enforcement, where there are over 90 local police departments and the Connecticut State Police.

- 1) Arrest:** An individual enters into the criminal justice system at the time of arrest.
- 2) Court:** At arraignment, judges review the charges filed against the accused and set a bail amount. Individuals who cannot meet bail conditions are incarcerated in DOC facilities to await trial. If the defendant is convicted, they may be sentenced to a range of sanctions including a fine, probation, or a term of incarceration.
- 3) DOC Facilities:** Total facility population at DOC contains the unsentenced population, which is awaiting trial, the sentenced population, inmates who have returned from special parole, and offenders charged in federal cases or non-state cases.
- 4) Pre-Trial Release:** Some defendants who are incarcerated pending the disposition of their cases may be eligible for a bond reduction or placement into pre-trial diversionary programs or treatment programs. These programs feature close coordination and cooperation between DOC, CSSD and the Department of Mental Health and Addiction Services (DMHAS).
- 5) Re-Entry Services:** Depending on several factors, an inmate may be eligible to complete a portion of his/her prison sentence under supervision of the DOC's Parole and Community Services Unit. Non-violent Inmates with sentences shorter than two years are eligible for Transitional Supervision after serving 50% of their sentences. Inmates serving sentences longer than two years may be eligible for parole.
- 6) Returns:** Offenders who violate the conditions of their community release may be returned to prison to complete the remainder of their sentences.
- 7) End of Sentence (EOS):** At the end of their sentences some offenders are required to complete a period of post-release supervision. Split-sentence offenders are supervised by the Judicial Branch's Office of Adult Probation. Offenders sentenced to special parole remain under DOC supervision.
- 8) Violation of Probation:** If an individual violates the terms of their probation, an arrest warrant must be issued, and the violator's case is returned to court.

TABLE 2 – DOC Population Counts, First of the Month

	2010	2011	2011	2010	% Change	
	Apr. 1st	May 1st	June 1st	June 1st	Monthly	Annual
DOC Facility						
Federal/Other	151	149	132	146	-12.9%	-9.6%
Sentenced	13,731	13,669	13,613	14,155	-0.4%	-3.8%
Special Parole	316	292	319	316	8.5%	0.9%
Accused/Unsentenced	3,457	3,376	3,491	3,747	3.3%	-6.8%
Total	17,655	17,486	17,555	18,364	0.4%	-4.4%
DOC Community						
Transfer Parole	22	29	30	60	3.3%	-50.0%
Parole/ Parcom Total	1,755	1,763	1,775	1,729	0.7%	2.7%
Parole	1,584	1,592	1,599	1,577	0.4%	1.4%
Parcom @ CT	171	171	176	152	2.8%	15.8%
Furlgh/Trans Place Total	20	21	23	35	8.7%	-34.3%
Furlough	3	5	5	18	0.0%	-72.2%
Trans Placement	17	16	18	17	11.1%	5.9%
Halfway House Total	1,071	1,077	1,092	1,046	1.4%	4.4%
Comm Release	905	859	880	873	2.4%	0.8%
TS	21	16	10	15	-60.0%	-33.3%
Parole	98	90	95	91	5.3%	4.4%
Transfer Parole	1	3	2	0	-	-
Special Parole	100	109	105	67	-3.8%	56.7%
TS Total	979	1,006	1,003	924	-0.3%	8.5%
Special Parole	904	915	907	846	-0.9%	7.2%
Total	4,751	4,811	4,830	4,640	0.4%	4.1%

TABLE 3 – DOC Admissions and Releases, Monthly Totals

	2010	2010	2011	2010	% Change	
	Mar.	April	May	May	Monthly	Annual
Admissions						
Federal/Other	117	115	88	91	-23.5%	-3.3%
Returns	202	193	234	232	21.2%	0.9%
Transfer Parole	2	0	2	0	-	-
Parole	55	60	71	81	18.3%	-12.3%
Trans Plac/Furlough	1	2	0	5	-	-
HWH	41	37	26	46	-29.7%	-43.5%
TS	62	57	85	54	49.1%	57.4%
Special Parole	41	37	50	46	35.1%	8.7%
New Sentence	464	383	392	361	2.3%	8.6%
VOP	107	102	99	82	-2.9%	20.7%
Accused	1,687	1,539	1,684	1722	9.4%	-2.2%
Total	2,470	2,230	2,398	2,406	7.5%	-0.3%
Releases						
Transfer Parole	21	36	26	37	-27.8%	-29.7%
Parole	200	182	174	164	-4.4%	6.1%
Trans Plac/Furlough	10	8	11	21	37.5%	-47.6%
HWH	208	182	228	168	25.3%	35.7%
TS	318	323	268	259	-17.0%	3.5%
Special Parole	62	81	59	58	-27.2%	1.7%
End of Sentence	957	915	889	886	-2.8%	0.3%
Total	1,776	1,727	1,655	1,593	-4.2%	3.9%
Pre-trial Releases*						
Did not return from Court	631	567	570	565	0.5%	0.9%
Release to Bond	553	456	459	519	0.7%	-11.6%

*Monthly totals are measured by occurrence, not by individual.

Parole

Paroles and Parole hearings

The Board considered 236 parole cases at full panel hearings in April. In addition, the Board reviewed another 87 parole violation cases. Fifty-two (52) of these cases resulted in offenders being reparaoled. In 37 cases had been for parole revocations; 26 were for rescissions.

TABLE 4A –Paroles Granted, Monthly

	Hearings	Granted	Rate
MAR	275	224	81%
APR	238	224	94%
MAY	236	198	84%

Data on transfer paroles will be published once the Board completes its program evaluation.

Public Defender Services

Public Defender services are provided to "indigent" accused adults and juveniles at 37 field offices and by 6 specialized units and branches around the state.

TABLE 5 –Cases Appointed and Disposed

	Cases appointed		Cases disposed	
	GA	JD	GA	JD
JAN '11	4,951	214	4,418	180
FEB	4,477	194	4,239	139
MAR	5,949	307	5,425	203
APR	5,081	211	4,450	202

Data Notes: These figures are monthly operational totals. They may not conform to year-end totals.

Probation

Court Support Services Division: total client caseload for May 2011: 50,791. In April, the caseload was 50,983.

TABLE 6 – Monthly CSSD Direct Sentenced & Probationer Community Placements

	Community Based	Out-patient	Inpatient/ Resident	Total
FEB	1,286	849	27	2,162
MAR	1,154	1,185	26	2,365
APR	1,296	953	22	2,271

Figures are based on the latest data available at publication time. Figures in subsequent issues may not agree with those published here.

Pre-trial Diversion and Supervision

TABLE 7 – Pre-trial Diversion & Supervision

Data Notes: Figures are based on the data available at the time of this report. Data in subsequent issues may not agree.

	Pre-trial Bail Case Starts	Client Supv. Starts
MAR	2,673	2,627
APR	2,523	2,252
MAY	2,516	2,251

CHART 3 – Daily Facility Population
June 1, 2011 to June 7, 2011

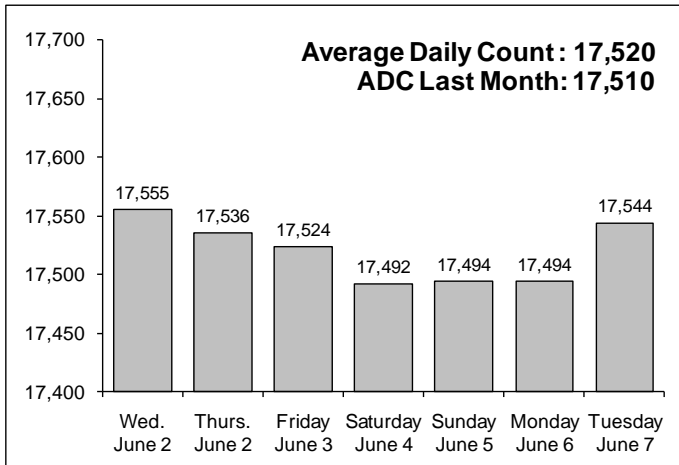


CHART 6 – Monthly DOC Admissions by Type
March 2010 through April 2011

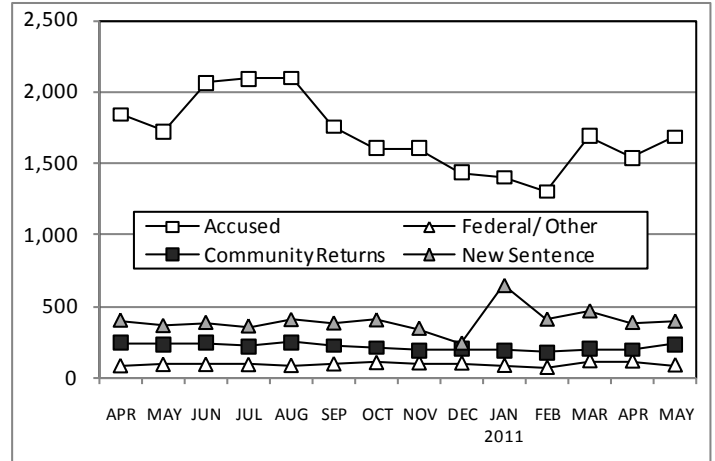


CHART 4 – Prison Population, first-of-month
January 1 through December 1

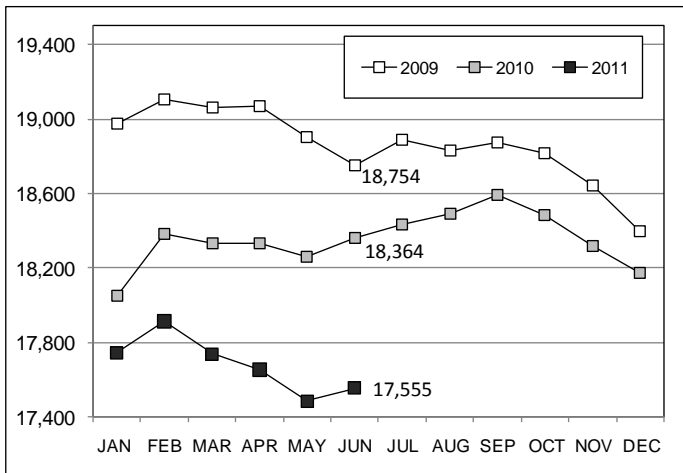


CHART 7 – Readmissions from Community Release
May 2011



CHART 5 – Statewide Criminal Arrests
2011 against the 3-year average

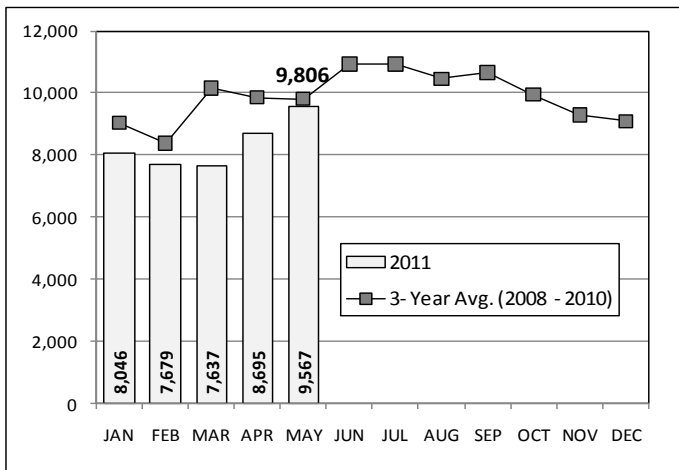
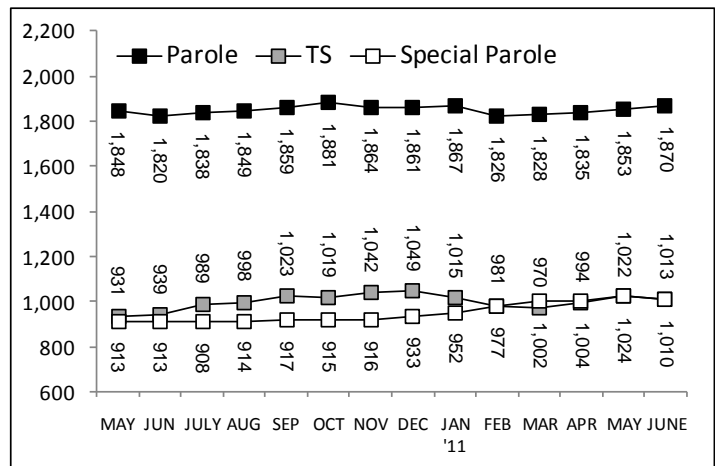


CHART 8 – Parole, TS and Special Parole, supervised cases
May 1, 2010 to June 1, 2011



Note: Data for all charts, with the exception of Chart 5, was supplied by CT DOC. Data for Chart 5 was provided by Court Operations. Data in Chart 8 includes all offenders under parole jurisdiction.