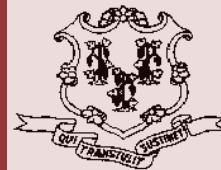


Criminal Justice Policy & Planning Division Monthly Indicators Report



Monthly Indicators are available online at: www.ct.gov/OPM/CriminalJustice/Research

Highlights

- The prison population grew by 77 inmates during June. On July 1, there were 17,631 inmates incarcerated in the state. Although the prison population rose during June, it is important to note that the prison count on the first of this month was the lowest prison total on a July 1st since 2000.
- Last month we reported that a final decision on the future of Bergin CI, a level-2 prison in Mansfield, would depend on the results of voting by unionized state workers on a package of contract concessions that had been negotiated between union leaders (SEBAC) and the Governor. The concession package was not ratified and, as this paper goes to press, it appears that Bergin will be closed in the very near future.
- Layoff notices are currently being issued at criminal justice agencies across the state. The Department of Correction could lose up to 1,200 positions.
- In a related development, the Malloy administration also announced that it plans to close the Enfield Correctional Institution on October 1, 2011. It appears likely that almost half of Enfield CI's 700 prisoners will be transferred to Cheshire CI where they will be housed in a previously moth-balled housing unit.
- Monthly criminal arrests were down in June compared to last year, dropping to 9,979 from 10,932.

Next month we will begin to publish more data on pre-trial offenders in Connecticut.

Prison Population Forecast

The state's prison population rose moderately during June. The average daily count (ADC) for the first week in July was 17,615, only slightly higher than the June figure of 17,520. The uptick in this month's prison population brought the OPM forecast into closer alignment with the actual count.

During a typical year, the prison population expands as summer progresses. Most of this growth is driven by increases in the number of pre-trial prisoners. During June, there were 1,748 pre-trial prison admittances, a 3.8% increase over the 1,684 pre-trial admits in May (See Table 3).

Although the monthly pre-trial population increased last month, the number of pre-trial prison admittances was down significantly (15.4%) compared with the figure for June 2010, when 2,065 pre-trial offenders were admitted (See Table 3). Arrests and bail are two of the most important factors that determine the volume of pre-trial admits.

TABLE 1 –Prison Population Forecast

	Actual (*Avg Daily Count)	OPM 2011 Forecast	Diff. %
FEB '11	17,838*	-	-
MAR	17,702*	17,960	-1.4%
APR	17,628*	17,910	-1.6%
MAY	17,510*	17,792	-1.6%
JUN	17,520*	17,787	-1.5%
JUL	17,615*	17,786	-1.0%
AUG	-	17,810	-
SEP	-	17,950	-
OCT	-	18,035	-
NOV	-	17,931	-
DEC	-	17,758	-
JAN '12	-	17,375	-
FEB	-	17,640	-

* Average Daily Count, first week of month

CHART 1 – Total DOC Facility Population, Actual and Projected
January 1, 2010 through February 1, 2012

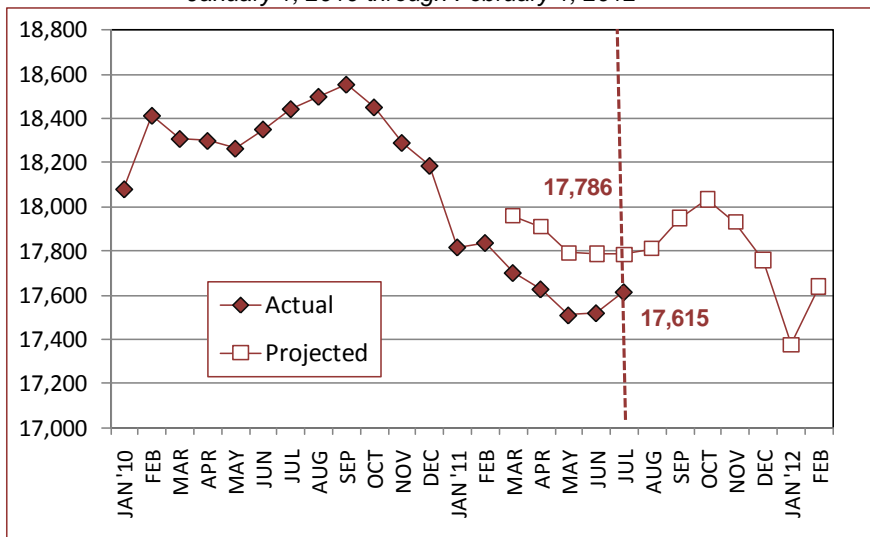


TABLE 2 – DOC Population Counts, First of the Month

	2010	2011	2011	2010	% Change	
	May 1	June 1	July 1	July 1	Monthly	Annual
DOC Facility						
Federal/Other	149	132	139	145	5.0%	-4.1%
Sentenced	13,669	13,613	13,590	14,035	-0.2%	-3.2%
Special Parole	292	319	322	320	0.9%	0.6%
Accused/Unsentenced	3,376	3,491	3,580	3,931	2.5%	-8.9%
Total	17,486	17,555	17,631	18,431	0.4%	-4.3%
DOC Community						
Transfer Parole	29	30	30	53	0.0%	-43.4%
Parole/ Parcom Total	1,763	1,775	1,789	1,748	0.8%	2.3%
Parole	1,592	1,599	1,613	1,588	0.9%	1.6%
Parcom @ CT	171	176	176	160	0.0%	10.0%
Furlgh/Trans Place Total	21	23	15	22	-53.3%	-31.8%
Furlough	5	5	2	6	-150.0%	-66.7%
Trans Placement	16	18	13	16	-38.5%	-18.8%
Halfway House Total	1,077	1,092	1,105	1,065	1.2%	3.8%
Comm Release	859	880	878	880	-0.2%	-0.2%
TS	16	10	14	19	28.6%	-26.3%
Parole	90	95	103	90	7.8%	14.4%
Transfer Parole	3	2	0	2	-	-
Special Parole	109	105	109	74	3.7%	47.3%
TS Total	1,006	1,003	996	970	-0.7%	2.7%
Special Parole	915	907	914	834	0.8%	9.6%
Total	4,811	4,830	4,849	4,692	0.4%	3.3%

TABLE 3 – DOC Admissions and Releases, Monthly Totals

	2010	2010	2011	2010	% Change	
	April	May	June	June	Monthly	Annual
Admissions						
Federal/Other	115	88	106	91	20.5%	16.5%
Returns	193	234	212	241	-9.4%	-12.0%
Transfer Parole	0	2	0	1	-	-
Parole	60	71	58	80	-18.3%	-27.5%
Trans Plac/Furlough	2	0	5	2	-	-
HWH	37	26	32	40	23.1%	-20.0%
TS	57	85	74	68	-12.9%	8.8%
Special Parole	37	50	43	50	-14.0%	-14.0%
New Sentence	383	392	367	383	-6.4%	-4.2%
VOP	102	99	100	94	1.0%	6.4%
Accused	1,539	1,684	1,748	2065	3.8%	-15.4%
Total	2,230	2,398	2,433	2,780	1.5%	-12.5%
Releases						
Transfer Parole	36	26	18	39	-30.8%	-53.8%
Parole	182	174	187	212	7.5%	-11.8%
Trans Plac/Furlough	8	11	7	7	-36.4%	0.0%
HWH	182	228	182	225	-20.2%	-19.1%
TS	323	268	294	336	9.7%	-12.5%
Special Parole	81	59	75	53	27.1%	41.5%
End of Sentence	915	889	870	931	-2.1%	-6.6%
Total	1,727	1,655	1,633	1,803	-1.3%	-9.4%
Pre-trial Releases*						
Did not return from Court	567	570	560	623	-1.8%	-10.1%
Release to Bond	456	459	523	654	13.9%	-20.0%

*Monthly totals are measured by occurrence, not by individual.

Parole

Paroles and Parole hearings

The Board considered 198 new parole cases at full panel hearings in June. In addition, they reviewed another 114 parole violation cases. Eighty (80) of these cases resulted in offenders being reparaoled. Out of 80, 58 cases had been for parole revocations; 22 were for rescissions.

TABLE 4 – Paroles Granted, Monthly

	Hearings	Granted	Rate
APR	238	224	94%
MAY	236	198	84%
JUN	198	160	84%

The Board did not consider any cases for Transfer Parole this month.

Data on transfer paroles will be published once the Board completes its program evaluation.

Public Defender Services

Public Defender services are provided to "indigent" adults and juveniles at 37 field offices and by 6 specialized units around the state.

TABLE 5 – PD Cases, Appointed & Disposed

	Cases appointed		Cases disposed	
	GA	JD	GA	JD
MAR	5,949	307	5,425	203
APR	5,081	211	4,450	202
MAY	5,444	272	4,231	148

Data Notes: These figures are monthly operational totals. They may not conform to year-end totals.

Probation

Court Support Services Division: total client caseload for June 2011: 50,001. In May, the caseload was 50,791.

TABLE 6 – Monthly CSSD Direct Sentenced & Probationer Community Placements

	Community Based	Out-patient	Inpatient/Resident	Total
MAR	1,154	1,185	26	2,365
APR	1,296	953	22	2,271
MAY	987	969	22	1,982

Figures are based on the latest data available at publication time. Figures in subsequent issues may not agree with those published here.

Pre-trial Diversion and Supervision

TABLE 7 – Pre-trial Diversion & Supervision

Data Notes: Figures are based on the data available at the time of this report. Data in subsequent issues may not agree.

	Pre-trial Bail Client Supv.	
	Case Starts	Starts
APR	2,523	2,252
MAY	2,516	2,251
JUNE	2,418	2,190

CHART 3 – Daily Facility Population
July 1, 2011 to July 7, 2011

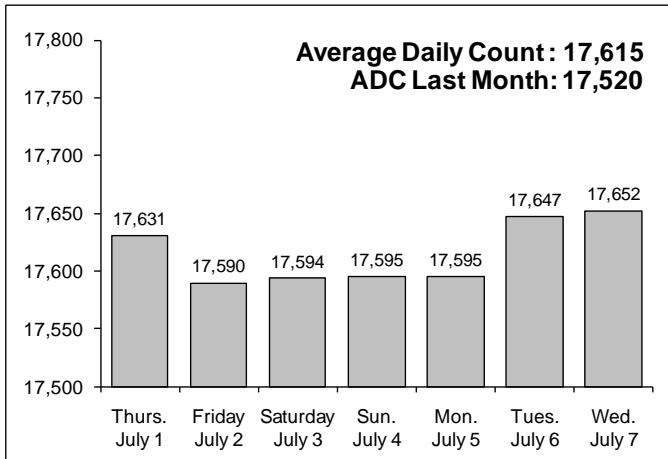


CHART 6 – Monthly DOC Admissions by Type
May 2010 through June 2011

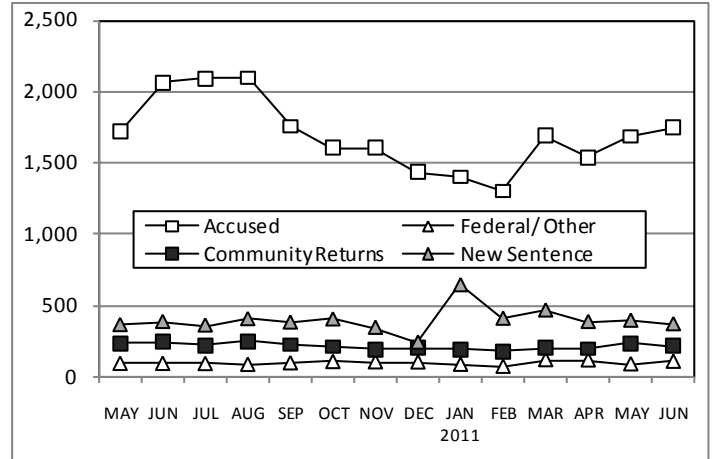


CHART 4 – Prison Population, first-of-month
January 1 through December 1

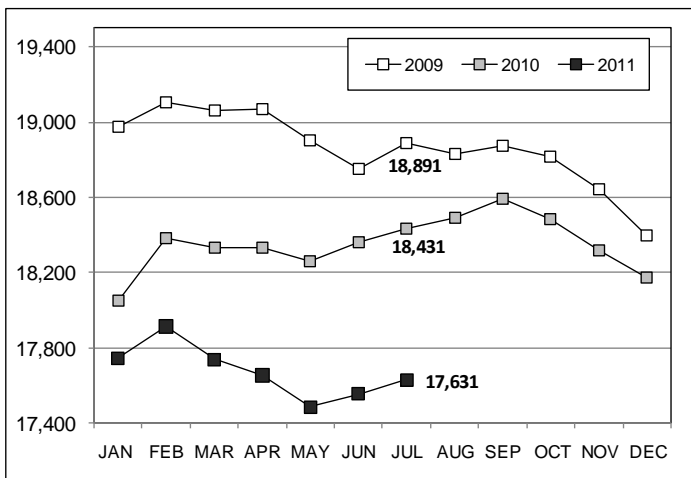


CHART 7 – Readmissions from Community Release
June 2011

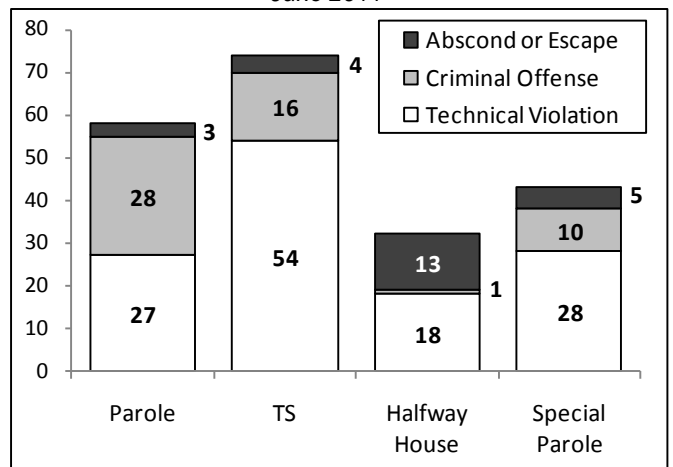


CHART 5 – Monthly, Statewide Criminal Arrests
2011 against the 3-year average

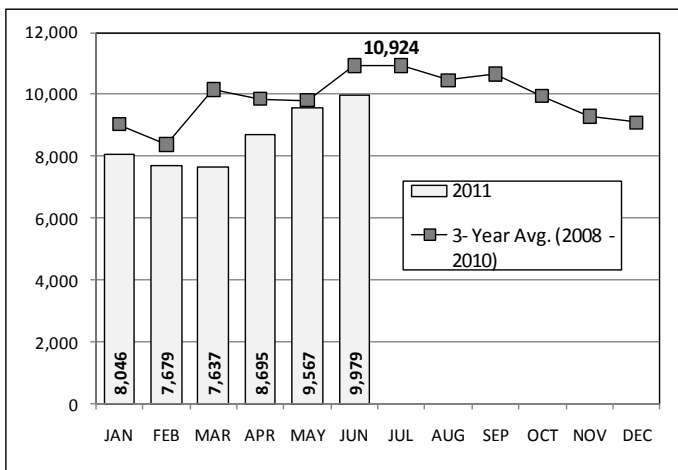
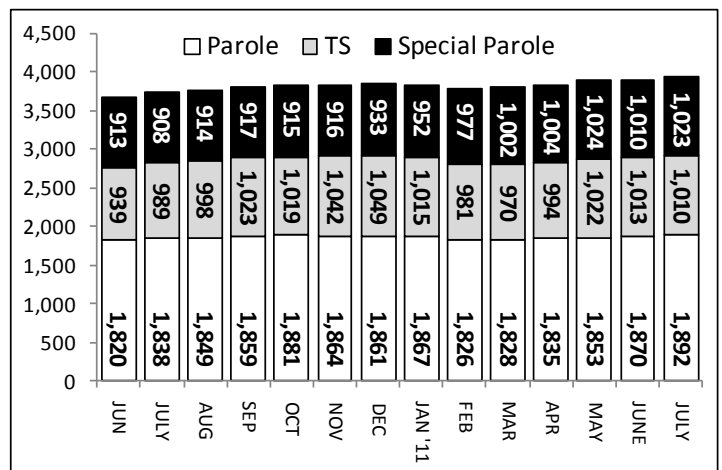


CHART 8 – Parole, TS and Special Parole, supervised cases
June 1, 2010 to July 1, 2011



Note: Data for all charts, with the exception of Chart 5, was supplied by CT DOC. Data for Chart 5 was provided by Court Operations. Data in Chart 8 includes all offenders under parole jurisdiction.