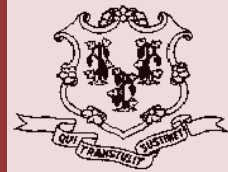


Criminal Justice Policy & Planning Division Monthly Indicators Report



Monthly Indicators are available online at: www.ct.gov/OPM/CriminalJustice/Research

Highlights

- The prison population on January 1st was 17,746, 426 inmates fewer than the figure on December 1st, when 18,172 people were incarcerated in Connecticut. Last January 1st, the prison count was 18,053 (See Chart 4).
- Following typical seasonal patterns, the inmate count, which declined during the fall, began to grow again shortly after New Year. During the first week of January the prison population grew by 173 (See Chart 3).
- Statewide criminal arrests dropped by 8.1% in 2010 compared to 2009. Last year state and municipal law enforcement agencies reported 114,156 arrests. In the previous year, 2009, they reported 124,249 arrests.
- The steep drop in the prison population during December reflected both a decrease in the number of prison admits and a small increase in the number of offenders who were released or discharged during the month,
- Adult probation caseloads at CSSD have declined significantly over the past year. In December 2009, CSSD's adult probation caseload was 55,687. This December it was 52,099, a 6.9% decrease.

The Malloy Administration appointed Mike Lawlor as the new Undersecretary of OPM's Criminal Justice Policy & Planning Division. Lawlor, former co-chair of the Judiciary Committee, replaced Brian Austin in January.

Prison Population Forecast

The average daily count of prisoners during the first week in January was 17,818, about one half a percentage point higher than the figure projected by OPM in February 2010. Since October, the actual prison population has trended closely with OPM's annual projection.

OPM's Criminal Justice Policy & Planning Division is currently preparing its new annual forecast of the prison population for the coming year.

TABLE 1 –Prison Population Forecast

	Actual (*Avg Daily Count)	OPM 2010 Forecast	Difference
FEB '10	18,414*	-	-0.09%
MAR	18,309*	18,332	0.12%
APR	18,300*	18,281	-0.10%
MAY	18,265*	18,161	-0.57%
JUN	18,352*	18,156	-1.07%
JUL	18,444*	18,155	-1.57%
AUG	18,500*	18,180	-1.73%
SEP	18,555*	18,323	-1.25%
OCT	18,452*	18,411	-0.22%
NOV	18,291*	18,305	0.08%
DEC	18,187*	18,129	-0.32%
JAN '11	17,818*	17,738	-0.45%
FEB	-	18,009	

* Average Daily Count, first week of month

The current prison population is at its lowest point in a decade. On January 1st, 17,746 people were incarcerated in Connecticut. The last time that the January 1st prison count was lower was in 2001, when the population was 17,137. One notable difference in the overall prison population since 2001 is reflected in the ratio of accused prisoners to sentenced prisoners. In 2001, 17% of prisoners in the state were unsentenced. By 2011 the percentage of unsentenced prisoners had grown to 21% of the total prison population (See Chart 5).

CHART 1 – Total DOC Facility Population, Actual and Projected
January 1, 2009 through February 1, 2011

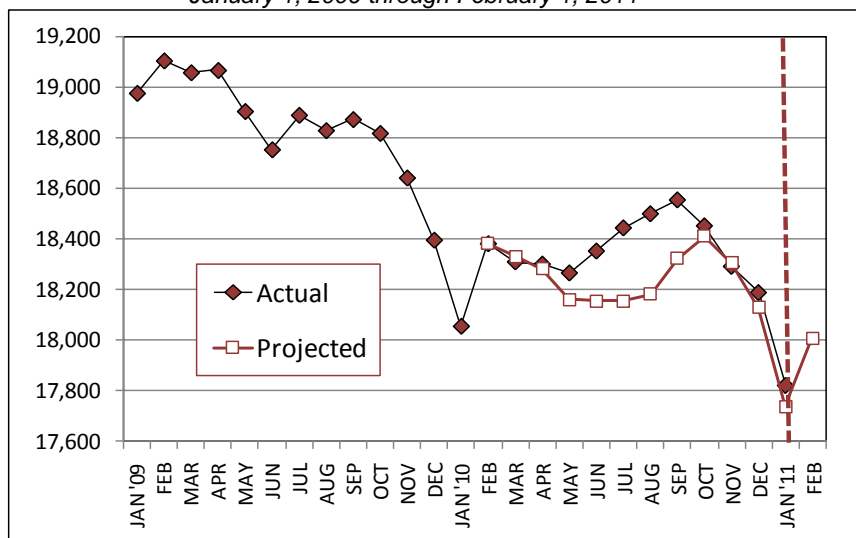
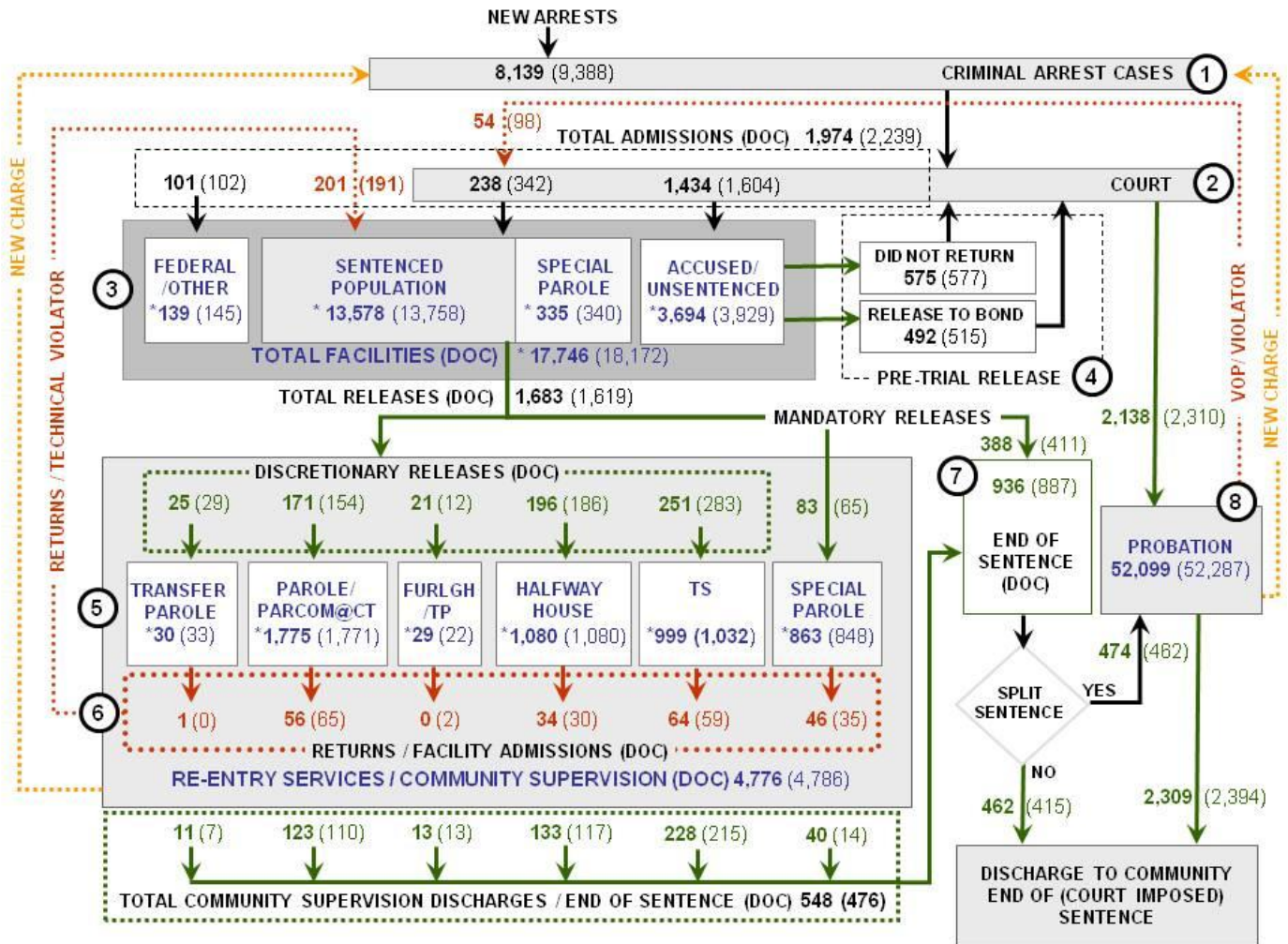


CHART 2 – Connecticut Criminal Justice System – Monthly Overview



Asterisks (*) indicate the population count on January 1, 2011.
 Parentheses enclose figures for the previous month.

Sources: Arrest-Judicial/Court Operations; Court-Judicial/CSSD; Facility/Community Supervision-DOC

Unlike states that have county governments, the majority of agencies within Connecticut's criminal justice system are State agencies. The one exception is law enforcement, where there are over 90 local police departments and the Connecticut State Police.

- 1) Arrest:** An individual enters into the criminal justice system at the time of arrest.
- 2) Court:** At arraignment, judges review the charges filed against the accused and set a bail amount. Individuals who cannot meet bail conditions are incarcerated in DOC facilities to await trial. If the defendant is convicted, they may be sentenced to a range of sanctions including a fine, probation, or a term of incarceration.
- 3) DOC Facilities:** Total facility population at DOC contains the unsentenced population, which is awaiting trial, the sentenced population, inmates who have returned from special parole, and offenders charged in federal cases or non-state cases.
- 4) Pre-Trial Release:** Some defendants who are incarcerated pending the disposition of their cases may be eligible for a bond reduction or placement into pre-trial diversionary programs or treatment programs. These programs feature close coordination and cooperation between DOC, CSSD and the Department of Mental Health and Addiction Services (DMHAS).
- 5) Re-Entry Services:** Depending on several factors, an inmate may be eligible to complete a portion of his/her prison sentence under supervision of the DOC's Parole and Community Services Unit. Non-violent Inmates with sentences shorter than two years are eligible for Transitional Supervision after serving 50% of their sentences. Inmates serving sentences longer than two years may be eligible for parole.
- 6) Returns:** Offenders who violate the conditions of their community release may be returned to prison to complete the remainder of their sentences.
- 7) End of Sentence (EOS):** At the end of their sentences some offenders are required to complete a period of post-release supervision. Split-sentence offenders are supervised by the Judicial Branch's Office of Adult Probation. Offenders sentenced to special parole remain under DOC supervision.
- 8) Violation of Probation:** If an individual violates the terms of their probation, an arrest warrant must be issued, and the violator's case is returned to court.

TABLE 2 – DOC Population Counts, First of the Month

	2010		2011	2010	% Change	
	Nov. 1st	Dec. 1st	Jan. 1st	Jan. 1st	Monthly	Annual
DOC Facility						
Federal/Other	148	145	139	129	-4.3%	7.8%
Sentenced	13,831	13,758	13,578	13,876	-1.3%	-2.1%
Special Parole	347	340	335	310	-1.5%	8.1%
Accused/Unsentenced	3,994	3,929	3,694	3,738	-6.4%	-1.2%
Total	18,320	18,172	17,746	18,053	-2.4%	-1.7%
DOC Community						
Transfer Parole	41	33	30	40	-10.0%	-25.0%
Parole/ Parcom Total	1,770	1,771	1,775	1,796	0.2%	-1.2%
Parole	1,593	1,593	1,592	1,642	-0.1%	-3.0%
Parcom @ CT	177	178	183	154	2.7%	18.8%
Furlgh/Trans Place Total	29	22	29	73	24.1%	-60.3%
Furlough	8	8	9	50	11.1%	-82.0%
Trans Placement	21	14	20	23	30.0%	-13.0%
Halfway House Total	1,090	1,080	1,080	1,040	0.0%	3.8%
Comm Release	896	885	881	882	-0.5%	-0.1%
TS	16	17	16	31	-6.3%	-48.4%
Parole	94	90	92	64	2.2%	43.8%
Transfer Parole	1	3	2	0	-	-
Special Parole	83	85	89	63	4.5%	41.3%
TS Total	1,026	1,032	999	1,000	-3.3%	-0.1%
Special Parole	833	848	863	857	1.7%	0.7%
Total	4,789	4,786	4,776	4,806	-0.2%	-0.6%

TABLE 3 – DOC Admissions and Releases, Monthly Totals

	2010	2010	2010	2009	% Change	
	Oct.	Nov.	Dec.	Dec.	Monthly	Annual
Admissions						
Federal/Other	104	102	101	84	-1.0%	20.2%
Returns	210	191	201	215	5.2%	-6.5%
Transfer Parole	0	0	0	1	-	-
Parole	57	65	56	68	-13.8%	-17.6%
Trans Plac/Furlough	0	2	0	4	-	-
HWH	45	30	34	46	13.3%	-26.1%
TS	60	59	64	55	8.5%	16.4%
Special Parole	48	35	46	41	31.4%	12.2%
New Sentence	401	342	238	310	-30.4%	-23.2%
VOP	90	98	54	71	-44.9%	-23.9%
Accused	1,604	1,604	1,434	1,657	-10.6%	-13.5%
Total	2,319	2,239	1,974	2,266	-11.8%	-12.9%
Releases						
Transfer Parole	21	29	25	22	-13.8%	13.6%
Parole	165	154	171	185	11.0%	-7.6%
Trans Plac/Furlough	12	12	21	81	75.0%	-74.1%
HWH	164	186	196	212	5.4%	-7.5%
TS	278	283	251	271	-11.3%	-7.4%
Special Parole	65	68	83	68	22.1%	22.1%
End of Sentence	899	887	936	1,035	5.5%	-9.6%
Total	1,604	1,619	1,683	1,874	4.0%	-10.2%
Pre-trial Releases*						
Did not return from Court	635	577	575	630	-0.3%	-8.7%
Release to Bond	551	515	492	572	-4.5%	-14.0%

*Monthly totals are measured by occurrence, not by individual.

Parole

Paroles and Parole hearings

The Board considered 256 parole cases at full panel hearings in December. In addition, the Board considered an additional 128 parole violation cases. Eighty-four (84) of these cases resulted in offenders being reparaoled; 58 cases had been revocations; 26 had been rescissions.

TABLE 4A –Paroles Granted, Monthly

	Hearings	Granted	Rate
OCT	282	226	80%
NOV	267	214	80%
DEC	256	214	84%

Data Notes: Figures are based on the data available at the time of this report. Data in subsequent issues may not agree.

The Board of Pardons and Paroles schedules parole hearing dates up to 18 months before an offender's eligibility date. This should allow the Board to have a greater impact on offender programming while the offender remains incarcerated. It should also provide DOC with more time to develop appropriate reintegration plans for each parolee. If properly implemented, this change should reduce the number of offenders that are incarcerated beyond their parole eligibility dates.

TABLE 4B –Transfer Parole Cases

	Reviewed	Granted	Denied	Continued	Rate
OCT	220	51	188	31	23%
NOV	243	39	183	21	16%
DEC	223	59	151	13	26%

Probation

Court Support Services Division: total client caseload for December 2010: 52,099; November caseloads: 52,287)

TABLE 5 – Monthly CSSD Direct Sentenced & Probationer Community Placements

	Community Based	Out-patient	Inpatient/ Resident	Total
SEPT	1,484	1,086	18	2,588
OCT	1,413	1,096	19	2,528
NOV	1185	1026	24	2235

Figures are based on the latest data available at publication time. Figures in subsequent issues may not agree with those published here.

Pre-trial Diversion and Supervision

TABLE 6 – Pre-trial Diversion & Supervision

	Pre-trial Bail Case Starts	Client Supv. Starts
OCT	2,416	2,226
NOV	2,459	2,310
DEC	2,226	2,138

CHART 3 – Snapshot Daily DOC Facility Population
January 1, 2011 to January 7, 2011

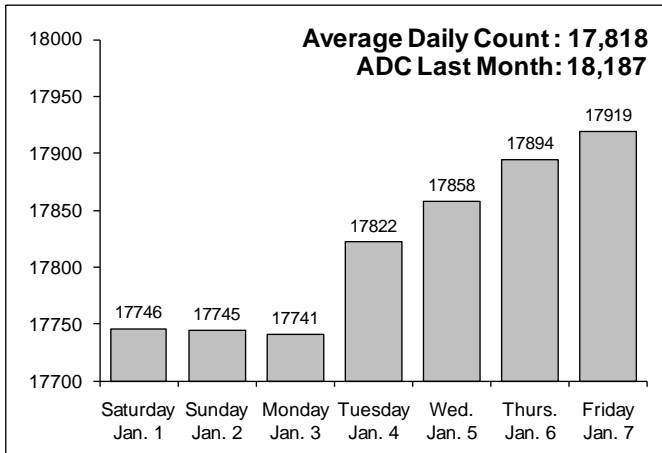


CHART 6 – Monthly DOC Admissions by Type
November 2009 to December 2010

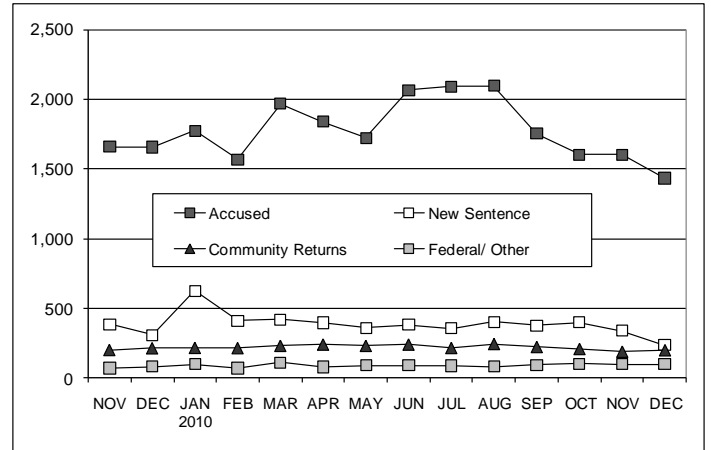


CHART 4 – Prison Population, first-of-month
January 1 through December 1

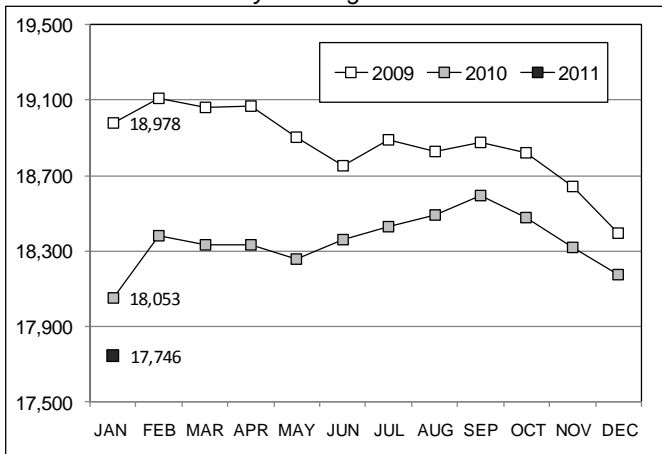


CHART 7 – Monthly Readmissions from Community Release
December 2010

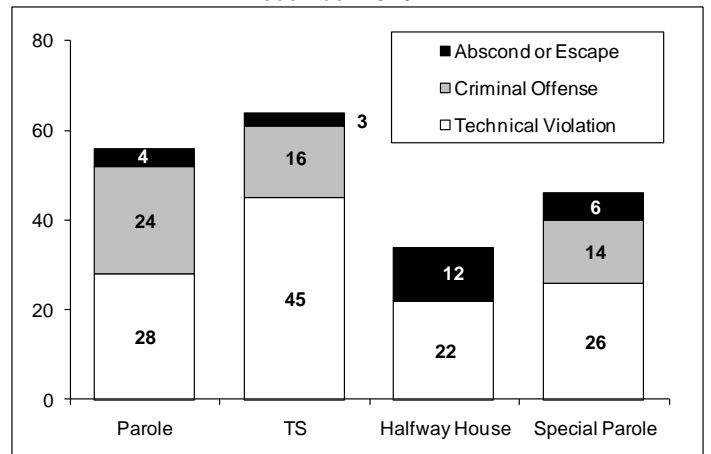


CHART 5 – Prisoners by sentenced status**
January 1, 2001 and January 1, 2011

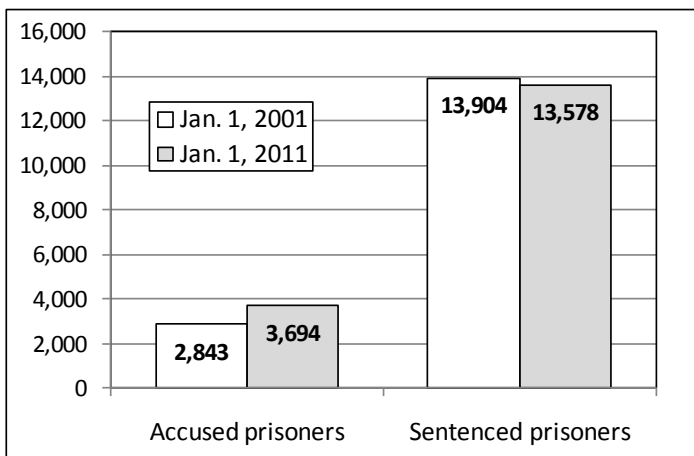
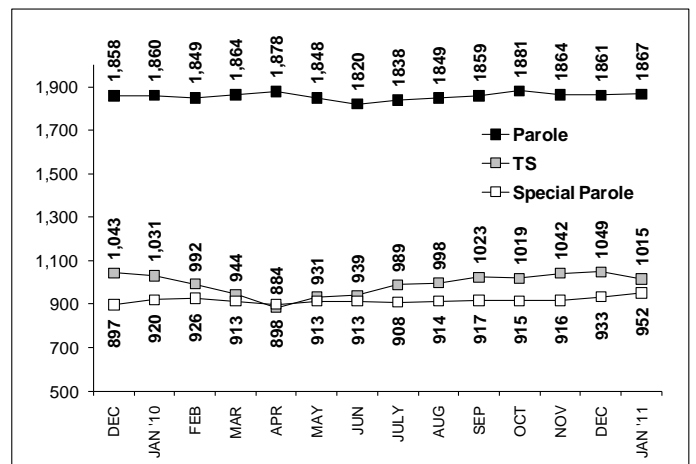


CHART 8 – Parole, TS and Special Parole, supervised cases
December 1, 2009 to January 1, 2011



Note: Data for all charts was supplied by CT DOC. Data in Chart 8 includes all offenders under parole jurisdiction.
** Chart 5 does not include prisoners under Federal jurisdiction or incarcerated special parolees.