

Criminal Justice Policy & Planning Division Monthly Indicators Report



Monthly Indicators are available online at: www.ct.gov/OPM/CriminalJustice/Research

Highlights

- 17,915 people were incarcerated in the state on February 1st 2011. This figure was the lowest February 1st inmate count since 2001.
- Following typical seasonal patterns, the prison population grew during January. The number of sentenced prisoner admits rose from 238 in December to 642 during January (See Table 3). Despite this, the Sentenced population in February 1 was only 217 prisoners higher than the January 1 figure (See Table 2). The discrepancy can be explained by the fact that for most of the offenders who were sentenced, many spent less than a month in prison.
- After seven months of expansion, the number of offenders on Transitional Supervision (TS) has ebbed in the past two months (See Chart 8). At this point it is not clear if we are witnessing a seasonal dip, or some structural impediment.
- The Board of Pardons and Paroles considered 302 new parole cases in January. This was up considerably from December when 256 cases were heard. The number of Transfer Parole cases also rose from 223 in December to 307 (See Tables 4A and 4B.).

The long awaited Sentencing Commission will have its first meeting on Thursday, February 24 at 2:00 p.m. at CCSU. The Chief Justice has appointed Judge Joseph Shortall as Chair and Governor Malloy has appointed Yale Law School Deputy Dean Tracey Meares as his designee.

Prison Population Forecast

The average daily count of prisoners during the first week in February was 17,838, about one percentage point lower than the 18,009 figure projected by OPM in February 2010 (See Chart 3).

Typically, the prison population declines from October through December, rebounding again strongly in during the month of January.

Although the prison population did increase during the month, January's increase was the second lowest in over a decade (See Chart 5). The prison population grew by only 0.7%, or 169 prisoners. In January 2008, in the aftermath of the crimes in Cheshire, the prison population grew by 2.3%, adding 456 prisoners. That February the state's prison population peaked at 19,894.

OPM recently produced a new forecast of the prison population for the coming year (Table 1.). The complete report is available online at OPM's Criminal Justice Division website.

TABLE 1 –Prison Population Forecast

	Actual (*Avg Daily Count)	OPM 2011 Forecast
FEB '11	17,838*	-
MAR	-	17,960
APR	-	17,910
MAY	-	17,792
JUN	-	17,787
JUL	-	17,786
AUG	-	17,810
SEP	-	17,950
OCT	-	18,035
NOV	-	17,931
DEC	-	17,758
JAN '12	-	17,375
FEB	-	17,640

* Average Daily Count, first week of month

CHART 1 – Total DOC Facility Population, Actual and Projected
January 1, 2010 through February 1, 2012

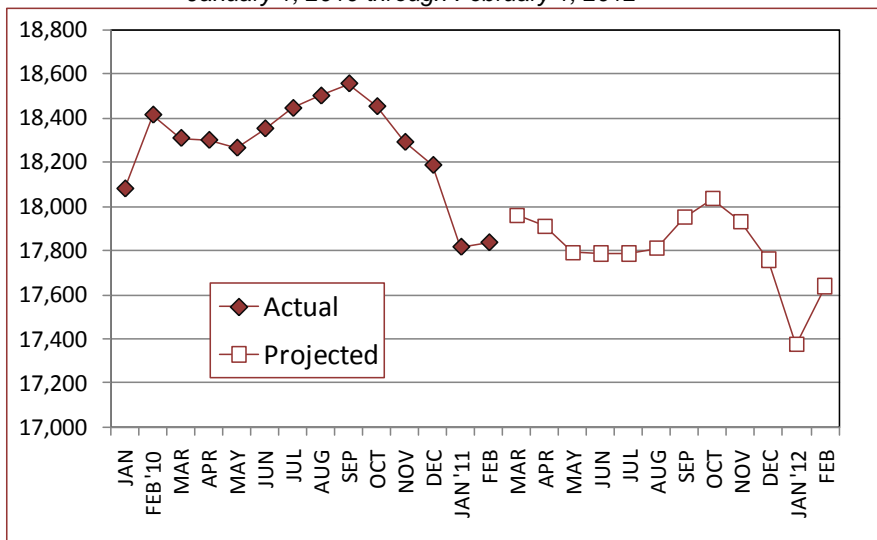
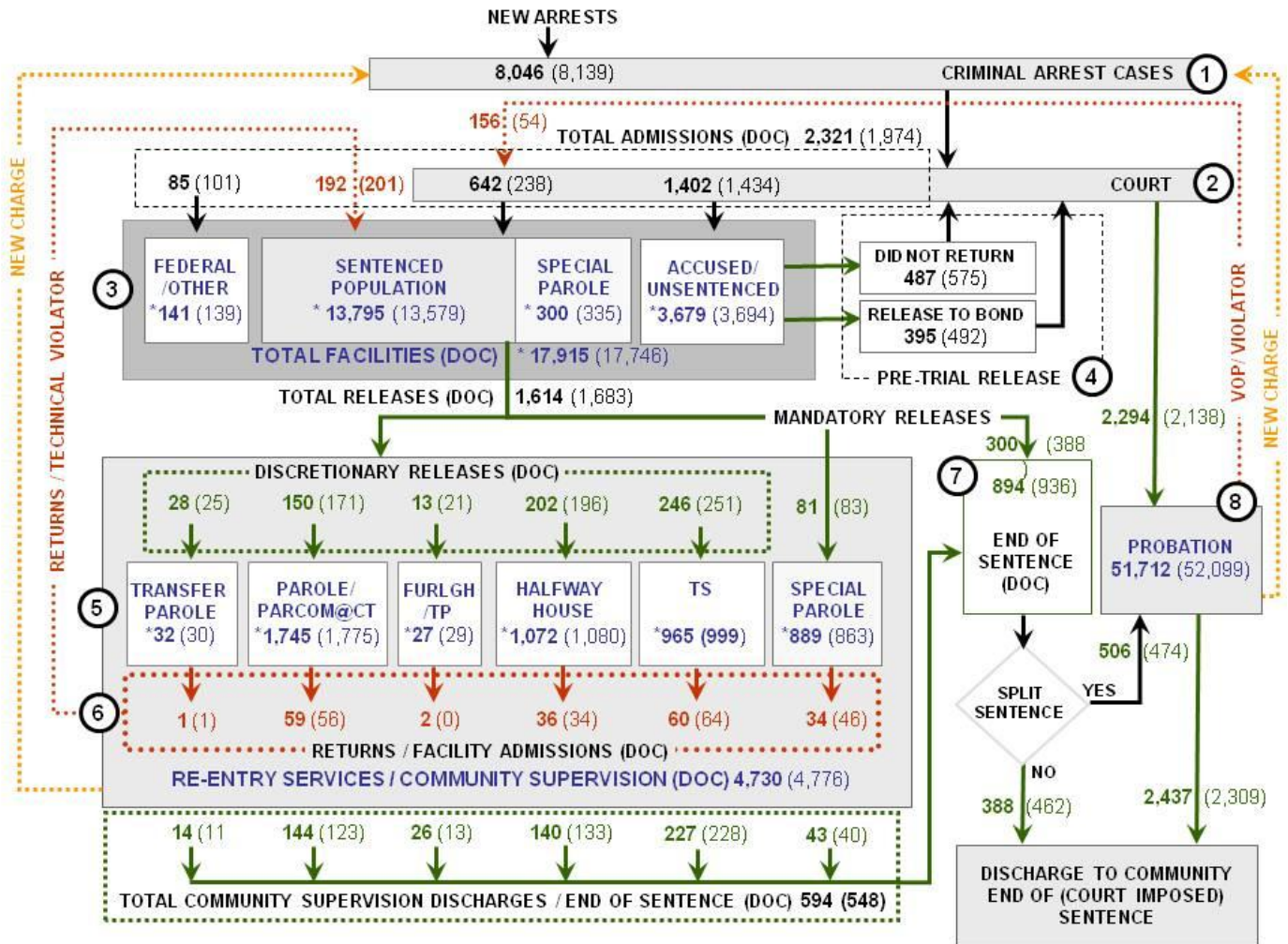


CHART 2 – Connecticut Criminal Justice System – Monthly Overview



Asterisks (*) indicate the population count on February 1, 2011.
 Parentheses enclose figures for the previous month.

Sources: Arrest-Judicial/Court Operations; Court-Judicial/CSSD; Facility/Community Supervision-DOC

Unlike states that have county governments, the majority of agencies within Connecticut's criminal justice system are State agencies. The one exception is law enforcement, where there are over 90 local police departments and the Connecticut State Police.

- 1) Arrest:** An individual enters into the criminal justice system at the time of arrest.
- 2) Court:** At arraignment, judges review the charges filed against the accused and set a bail amount. Individuals who cannot meet bail conditions are incarcerated in DOC facilities to await trial. If the defendant is convicted, they may be sentenced to a range of sanctions including a fine, probation, or a term of incarceration.
- 3) DOC Facilities:** Total facility population at DOC contains the unsentenced population, which is awaiting trial, the sentenced population, inmates who have returned from special parole, and offenders charged in federal cases or non-state cases.
- 4) Pre-Trial Release:** Some defendants who are incarcerated pending the disposition of their cases may be eligible for a bond reduction or placement into pre-trial diversionary programs or treatment programs. These programs feature close coordination and cooperation between DOC, CSSD and the Department of Mental Health and Addiction Services (DMHAS).
- 5) Re-Entry Services:** Depending on several factors, an inmate may be eligible to complete a portion of his/her prison sentence under supervision of the DOC's Parole and Community Services Unit. Non-violent Inmates with sentences shorter than two years are eligible for Transitional Supervision after serving 50% of their sentences. Inmates serving sentences longer than two years may be eligible for parole.
- 6) Returns:** Offenders who violate the conditions of their community release may be returned to prison to complete the remainder of their sentences.
- 7) End of Sentence (EOS):** At the end of their sentences some offenders are required to complete a period of post-release supervision. Split-sentence offenders are supervised by the Judicial Branch's Office of Adult Probation. Offenders sentenced to special parole remain under DOC supervision.
- 8) Violation of Probation:** If an individual violates the terms of their probation, an arrest warrant must be issued, and the violator's case is returned to court.

TABLE 2 – DOC Population Counts, First of the Month

	2010	2011	2011	2010	% Change	
	Dec. 1st	Jan. 1st	Feb. 1st	Feb. 1st	Monthly	Annual
DOC Facility						
Federal/Other	145	139	141	162	1.4%	-13.0%
Sentenced	13,758	13,578	13,795	14,105	1.6%	-2.2%
Special Parole	340	335	300	294	-11.7%	2.0%
Accused/Unsentenced	3,929	3,694	3,679	3,822	-0.4%	-3.7%
Total	18,172	17,746	17,915	18,383	0.9%	-2.5%
DOC Community						
Transfer Parole	33	30	32	47	6.3%	-31.9%
Parole/ Parcom Total	1,771	1,775	1,745	1,780	-1.7%	-2.0%
Parole	1,593	1,592	1,567	1,637	-1.6%	-4.3%
Parcom @ CT	178	183	178	143	-2.8%	24.5%
Furlgh/Trans Place Total	22	29	27	78	-7.4%	-65.4%
Furlough	8	9	4	54	-125.0%	-92.6%
Trans Placement	14	20	23	24	13.0%	-4.2%
Halfway House Total	1,080	1,080	1,072	1,029	-0.7%	4.2%
Comm Release	885	881	884	873	0.3%	1.3%
TS	17	16	16	20	0.0%	-20.0%
Parole	90	92	81	69	-13.6%	17.4%
Transfer Parole	3	2	3	0	-	-
Special Parole	85	89	88	67	-1.1%	31.3%
TS Total	1,032	999	965	972	-3.5%	-0.7%
Special Parole	848	863	889	859	2.9%	3.5%
Total	4,786	4,776	4,730	4,765	-1.0%	-0.7%

TABLE 3 – DOC Admissions and Releases, Monthly Totals

	2010	2010	2011	2010	% Change	
	Nov.	Dec.	Jan.	Jan.	Monthly	Annual
Admissions						
Federal/Other	102	101	85	100	-15.8%	-15.0%
Returns	191	201	192	218	-4.5%	-11.9%
Transfer Parole	0	0	1	2	-	-
Parole	65	56	59	76	5.4%	-22.4%
Trans Plac/Furlough	2	0	2	5	-	-
HWH	30	34	36	37	5.9%	-2.7%
TS	59	64	60	54	-6.3%	11.1%
Special Parole	35	46	34	44	-26.1%	-22.7%
New Sentence	342	238	642	626	169.7%	2.6%
VOP	98	54	156	146	188.9%	6.8%
Accused	1,604	1,434	1,402	1,774	-2.2%	-21.0%
Total	2,239	1,974	2,321	2,718	17.6%	-14.6%
Releases						
Transfer Parole	29	25	28	34	12.0%	-17.6%
Parole	154	171	150	198	-12.3%	-24.2%
Trans Plac/Furlough	12	21	13	58	-38.1%	-77.6%
HWH	186	196	202	219	3.1%	-7.8%
TS	283	251	246	227	-2.0%	8.4%
Special Parole	68	83	81	75	-2.4%	8.0%
End of Sentence	887	936	894	878	-4.5%	1.8%
Total	1,619	1,683	1,614	1,689	-4.1%	-4.4%
Pre-trial Releases*						
Did not return from Court	577	575	487	595	-15.3%	-18.2%
Release to Bond	515	492	395	529	-19.7%	-25.3%

*Monthly totals are measured by occurrence, not by individual.

Parole

Paroles and Parole hearings

The Board considered 302 parole cases at full panel hearings in January. In addition, the Board considered an additional 127 parole violation cases. Eighty-seven (87) of these cases resulted in offenders being reparaed; 69 cases had been for revocations; 18 were for rescissions.

TABLE 4A –Paroles Granted, Monthly

	Hearings	Granted	Rate
NOV	267	214	80%
DEC	256	214	84%
JAN '11	302	248	82%

Data Notes: Figures are based on the data available at the time of this report. Data in subsequent issues may not agree.

The Board of Pardons and Paroles schedules parole hearing dates up to 18 months before an offender's eligibility date. This should allow the Board to have a greater impact on offender programming while the offender remains incarcerated. It should also provide DOC with more time to develop appropriate reintegration plans for each parolee. If properly implemented, this change should reduce the number of offenders that are incarcerated beyond their parole eligibility dates.

TABLE 4B –Transfer Parole Cases

	Reviewed	Granted	Denied	Continued	Rate
NOV	243	39	183	21	16%
DEC	223	59	151	13	26%
JAN '11	307	61	218	28	20%

Probation

Court Support Services Division: total client caseload for January 2011: 51,712; December 2010 caseloads: 52,099)

TABLE 5 – Monthly CSSD Direct Sentenced & Probationer Community Placements

	Community Based	Out-patient	Inpatient/ Resident	Total
OCT	1,413	1,096	19	2,528
NOV	1,185	1,026	24	2,235
DEC	1,068	999	16	2,083

Figures are based on the latest data available at publication time. Figures in subsequent issues may not agree with those published here.

Pre-trial Diversion and Supervision

TABLE 6 – Pre-trial Diversion & Supervision

	Pre-trial Bail Case Starts	Client Supv. Starts
NOV	2,459	2,310
DEC	2,226	2,138
JAN '11	2,389	2,294

CHART 3 – Snapshot Daily DOC Facility Population
February 1, 2011 to February 7, 2011

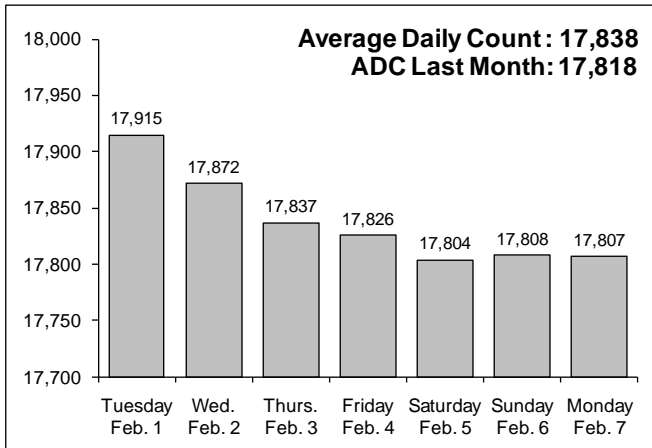


CHART 6 – Monthly DOC Admissions by Type
December 2009 to January 2011

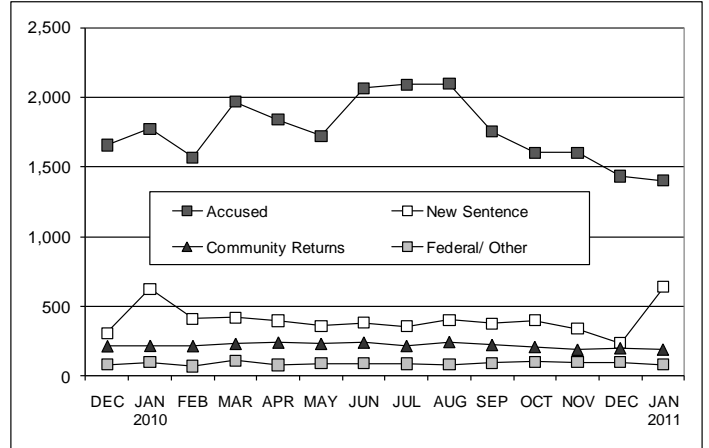


CHART 4 – Prison Population, first-of-month
January 1 through December 1

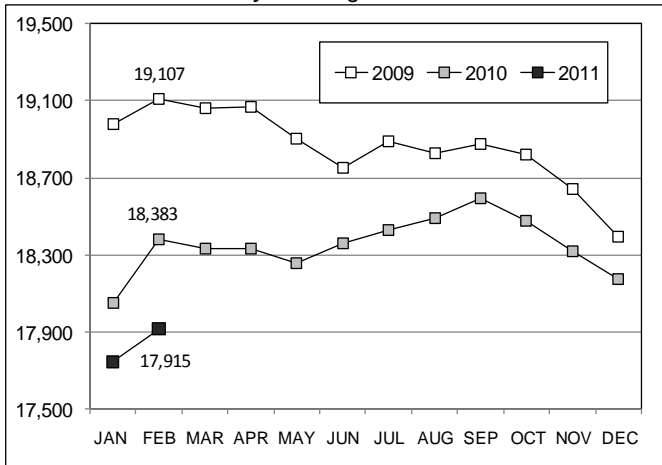


CHART 7 – Monthly Readmissions from Community Release
January 2011

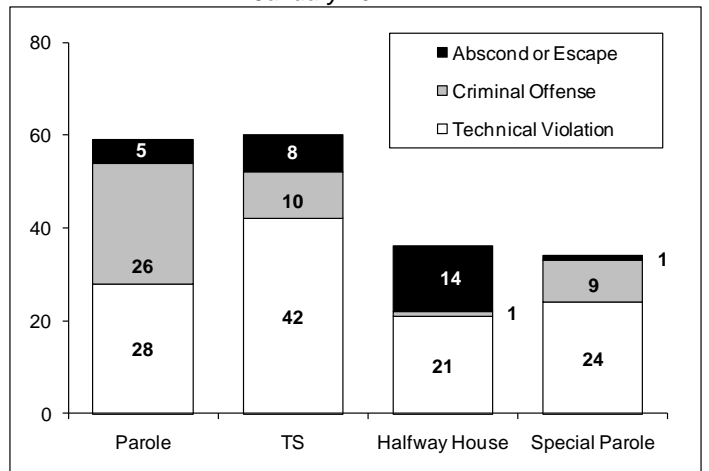


CHART 5 – Prison-population rebound in January
2000 through 2011

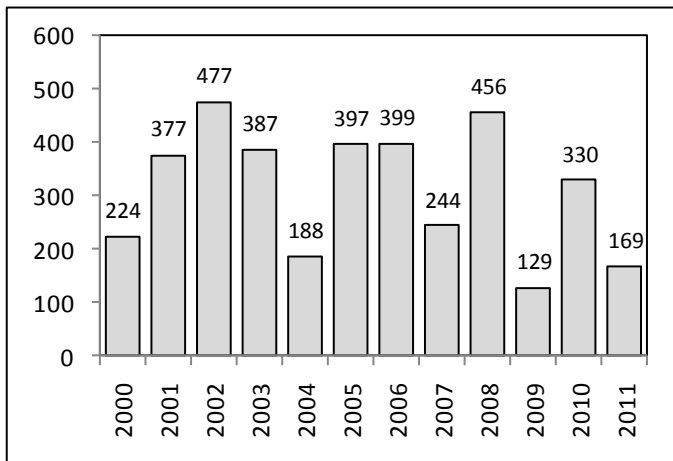
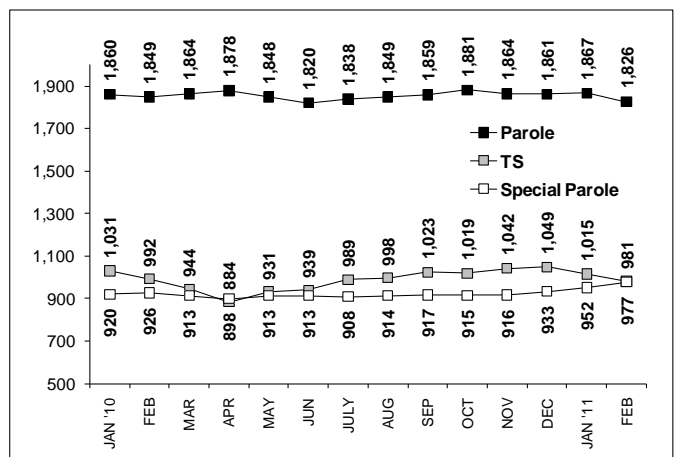


CHART 8 – Parole, TS and Special Parole, supervised cases
January 1, 2010 to February 1, 2011



Note: Data for all charts was supplied by CT DOC. Data in Chart 8 includes all offenders under parole jurisdiction.