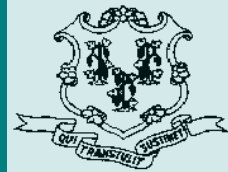


Criminal Justice Policy & Planning Division Monthly Indicators Report



Monthly Indicators are available online at: www.ct.gov/OPM/CriminalJustice/Research

Highlights

- The prison population declined again during the month, making October the second consecutive month in which the prison count fell. On September 1st 18,593 people were incarcerated in Connecticut. By November 1st this number had fallen to 18,320. The November 1st prison population was the lowest on record for that date since 2001 (See Chart 5).
- Monthly prison admits and releases were both down in October compared with last year (See Table 3). During October 2010, the DOC reported 1,604 accused-offender admissions; last year the figure was 1,795. During October 2010, 1,604 offenders (the 1,604 figure is coincidental) were released or discharged from prison. Last October, 1,907 offenders were released or discharged.
- Police departments across the state made 8,879 criminal arrests during October, a thousand fewer than in September. Although arrest totals tend to trend lower as the end of the year approaches, the volume of 2010 arrests has tracked below the average for recent years (See Chart 7). Fewer arrests during October certainly contributed to the decline in prison admissions during the month.

In October, the Vera Institute reported that Connecticut had the second largest decline, in percentage terms, in state money appropriated for corrections between FY2010 and FY2011 among 44 states that were surveyed. New York State had the largest reported decline, according to Vera.

Prison Population Forecast

During October, the actual prison count remained closely aligned with OPM's February 2010 projection. The unanticipated rise in inmate numbers during the summer appears to have resulted from slower-than-expected turnover rates among accused offenders, and not from increases in arrests or prison admissions.

OPM's Criminal Justice Policy & Planning Division (CJPPD) believes that the prison population will continue to decline, as forecast, through the end of the year.

TABLE 1 –Prison Population Forecast

	Actual (*Avg Daily Count)	OPM 2010 Forecast	Difference
FEB '10	18,414*	-	-0.09%
MAR	18,309*	18,332	0.12%
APR	18,300*	18,281	-0.10%
MAY	18,265*	18,161	-0.57%
JUN	18,352*	18,156	-1.07%
JUL	18,444*	18,155	-1.57%
AUG	18,500*	18,180	-1.73%
SEP	18,555*	18,323	-1.25%
OCT	18,452*	18,411	-0.22%
NOV	18,291*	18,305	0.08%
DEC	-	18,129	
JAN '11	-	17,738	
FEB	-	18,009	

* Average Daily Count, first week of month

The decline in the prison population that is projected through January 2011 is based on historic, seasonal-trend data. OPM will begin compiling its 2011-2012 prison population forecast shortly. For the upcoming forecast cycle, OPM will consult with a range of policy makers and administrators to gauge their assessments of incarceration trends for the coming year.

CHART 1 – Total DOC Facility Population, Actual and Projected
January 1, 2009 through February 1, 2011

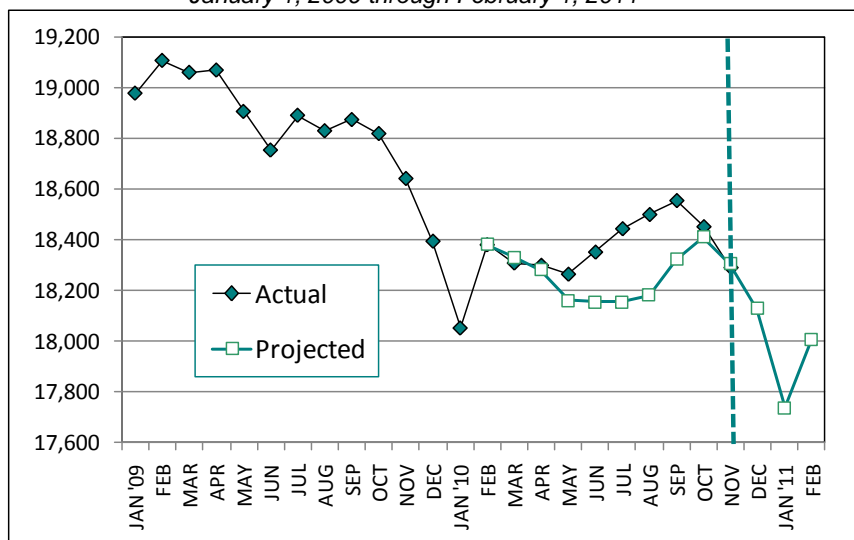
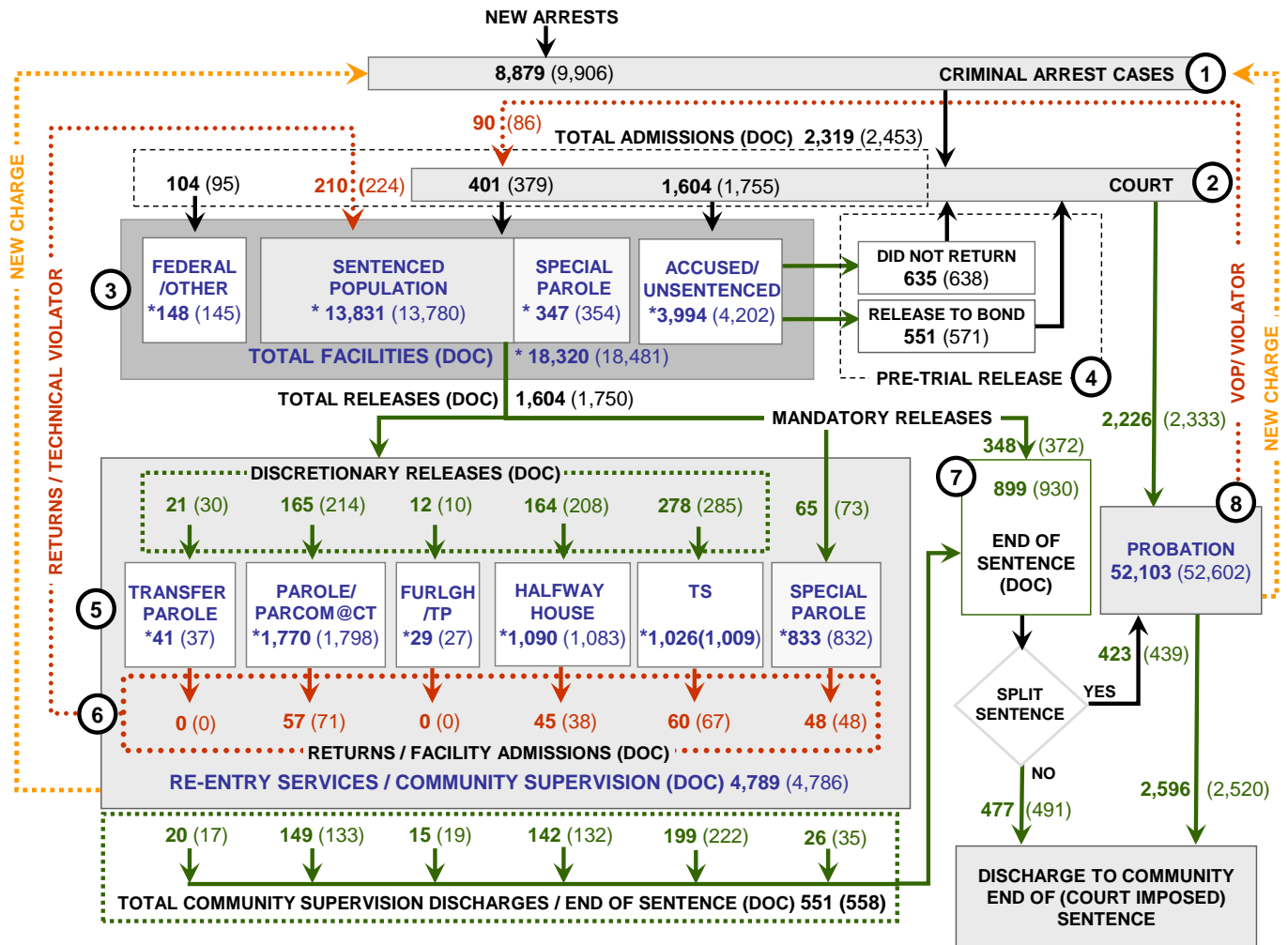


CHART 2 – Connecticut Criminal Justice System – Monthly Overview



Asterisks (*) indicate the population count on November 1, 2010.
 Parentheses enclose figures for the previous month.

Sources: Arrest-Judicial/Court Operations; Court-Judicial/CSSD; Facility/Community Supervision-DOC

Unlike states that have county governments, the majority of agencies within Connecticut's criminal justice system are State agencies. The one exception is law enforcement, where there are over 90 local police departments and the Connecticut State Police.

- 1) Arrest:** An individual enters into the criminal justice system at the time of arrest.
- 2) Court:** At arraignment, judges review the charges filed against the accused and set a bail amount. Individuals who cannot meet bail conditions are incarcerated in DOC facilities to await trial. If the defendant is convicted, they may be sentenced to a range of sanctions including a fine, probation, or a term of incarceration.
- 3) DOC Facilities:** Total facility population at DOC contains the unsentenced population, which is awaiting trial, the sentenced population, inmates who have returned from special parole, and offenders charged in federal cases or non-state cases.
- 4) Pre-Trial Release:** Some defendants who are incarcerated pending the disposition of their cases may be eligible for a bond reduction or placement into pre-trial diversionary programs or treatment programs. These programs feature close coordination and cooperation between DOC, CSSD and the Department of Mental Health and Addiction Services (DMHAS).
- 5) Re-Entry Services:** Depending on several factors, an inmate may be eligible to complete a portion of his/her prison sentence under supervision of the DOC's Parole and Community Services Unit. Non-violent Inmates with sentences shorter than two years are eligible for Transitional Supervision after serving 50% of their sentences. Inmates serving sentences longer than two years may be eligible for parole.
- 6) Returns:** Offenders who violate the conditions of their community release may be returned to prison to complete the remainder of their sentences.
- 7) End of Sentence (EOS):** At the end of their sentences some offenders are required to complete a period of post-release supervision. Split-sentence offenders are supervised by the Judicial Branch's Office of Adult Probation. Offenders sentenced to special parole remain under DOC supervision.
- 8) Violation of Probation:** If an individual violates the terms of their probation, an arrest warrant must be issued, and the violator's case is returned to court.

TABLE 2 – DOC Population Counts, First of the Month

	2010	2010	2010	2009	% Change	
	Sept 1st	Oct. 1st	Nov. 1st	Nov. 1st	Monthly	Annual
DOC Facility						
Federal/Other	138	145	148	141	2.0%	5.0%
Sentenced	13,855	13,780	13,831	14,279	0.4%	-3.1%
Special Parole	344	354	347	307	-2.0%	13.0%
Accused/Unsentenced	4,256	4,202	3,994	3,915	-5.2%	2.0%
Total	18,593	18,481	18,320	18,642	-0.9%	-1.7%
DOC Community						
Transfer Parole	55	37	41	48	9.8%	-14.6%
Parole/ Parcom Total	1,774	1,798	1,770	1,726	-1.6%	2.5%
Parole	1,603	1,625	1,593	1,562	-2.0%	2.0%
Parcom @ CT	171	173	177	164	2.3%	7.9%
Furlgh/Trans Place Total	25	27	29	27	6.9%	7.4%
Furlough	6	5	8	0	37.5%	-
Trans Placement	19	22	21	27	-4.8%	-22.2%
Halfway House Total	1,060	1,083	1,090	1,077	0.6%	1.2%
Comm Release	883	905	896	899	-1.0%	-0.3%
TS	13	10	16	56	37.5%	-71.4%
Parole	85	83	94	69	11.7%	36.2%
Transfer Parole	2	2	1	1	-	-
Special Parole	77	83	83	52	0.0%	59.6%
TS Total	1,010	1,009	1,026	1,027	1.7%	-0.1%
Special Parole	840	832	833	837	0.1%	-0.5%
Total	4,764	4,786	4,789	4,742	0.1%	1.0%

TABLE 3 – DOC Admissions and Releases, Monthly Totals

	2010	2010	2010	2009	% Change	
	August	Sept.	Oct.	Oct.	Monthly	Annual
Admissions						
Federal/Other	84	95	104	114	9.5%	-8.8%
Returns	245	224	210	220	-6.3%	-4.5%
Transfer Parole	2	0	0	1	-	-
Parole	88	71	57	59	-19.7%	-3.4%
Trans Plac/Furlough	1	0	0	3	-	-
HWH	35	38	45	36	18.4%	25.0%
TS	59	67	60	80	-10.4%	-25.0%
Special Parole	60	48	48	41	0.0%	17.1%
New Sentence	403	379	401	463	5.8%	-13.4%
VOP	85	86	90	111	4.7%	-18.9%
Accused	2,098	1,755	1,604	1,796	-8.6%	-10.7%
Total	2,830	2,453	2,319	2,593	-5.5%	-10.6%
Releases						
Transfer Parole	40	30	21	25	-30.0%	-16.0%
Parole	213	214	165	211	-22.9%	-21.8%
Trans Plac/Furlough	16	10	12	4	20.0%	200.0%
HWH	200	208	164	217	-21.2%	-24.4%
TS	298	285	278	326	-2.5%	-14.7%
Special Parole	76	73	65	69	-11.0%	-5.8%
End of Sentence	885	930	899	1,055	-3.3%	-14.8%
Total	1,728	1,750	1,604	1,907	-8.3%	-15.9%
Pre-trial Releases*						
Did not return from Court	698	638	635	653	-0.5%	-2.8%
Release to Bond	674	571	551	606	-3.5%	-9.1%

*Measured by occurrence, not by individual.

Parole

Paroles and Parole hearings

The Board considered 282 parole cases at full panel hearings in October. In addition, the Board considered an additional 119 parole violation cases. Seventy-six (76) of these cases resulted in offenders being reparaed; 52 cases had been revocations; 24 had been rescissions.

TABLE 4A –Paroles Granted, Monthly

	Hearings	Granted	Rate
AUG	283	231	82%
SEPT	269	213	79%
OCT	282	226	80%

Data Notes: Figures are based on the data available at the time of this report. Data in subsequent issues may not agree.

The Board of Pardons and Paroles schedules parole hearing dates up to 18 months before an offender's eligibility date. This should allow the Board to have a greater impact on offender programming while the offender remains incarcerated. It should also provide DOC with more time to develop appropriate reintegration plans for each parolee. If properly implemented, this change should reduce the number of offenders that are incarcerated beyond their parole eligibility dates.

TABLE 4B –Transfer Parole Activity

	Reviewed	Granted	Denied	Continued	Rate
AUG	274	77	180	17	28%
SEPT	265	78	183	4	29%
OCT	220	51	188	31	23%

Probation

Court Support Services Division: total client caseload for October 2010: 52,103; September caseloads: 52,602)

TABLE 5 – Monthly CSSD Direct Sentenced & Probationer Community Placements

	Community Based	Out-patient	Inpatient/ Resident	Total
JUL	1,509	911	24	2,444
AUG	1,435	905	30	2,370
SEPT	1,484	1,086	18	2,588

Data Notes: Figures are based on the latest data available at publication time. Figures in subsequent issues may not agree with those published here.

Pre-trial Diversion and Supervision

TABLE 6 – Pre-trial Diversion & Supervision

	Pre-trial Bail Case Starts	Client Supv. Starts
AUG	2,774	2,254
SEPT	2,571	2,333
OCT	2,416	2,226

CHART 3 – Snapshot Daily DOC Facility Population
November 1, 2010 to November 7, 2010

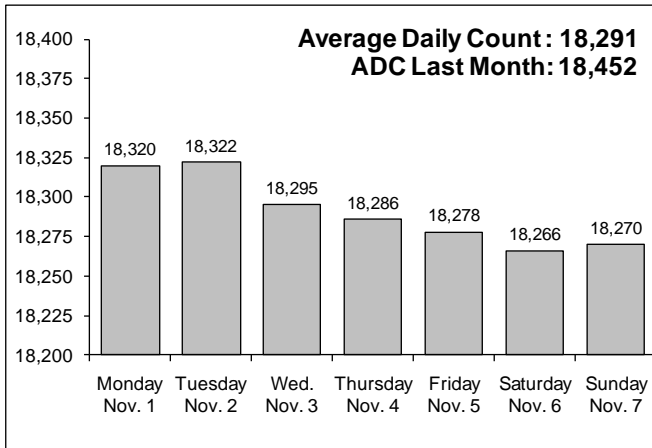


CHART 6 – Monthly DOC Admissions by Type
September 2009 to October 2010

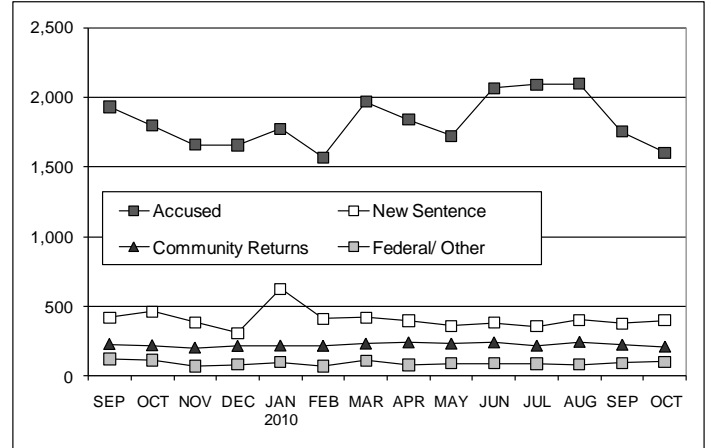


CHART 4 – Prison Population, first-of-month
January 1 through December 1, Calendar Year

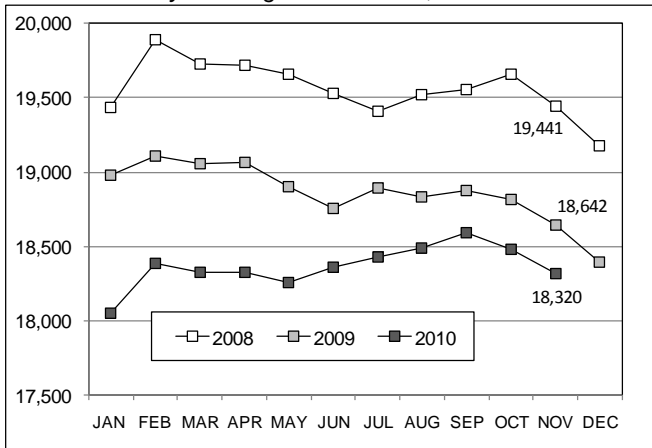


CHART 7 – Monthly arrests, statewide, against 3-year avg.
January through December

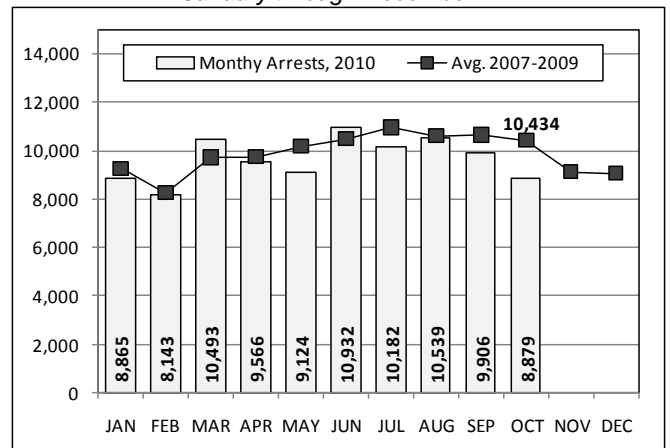


CHART 5 – Total prison population on November 1
2000 through 2010

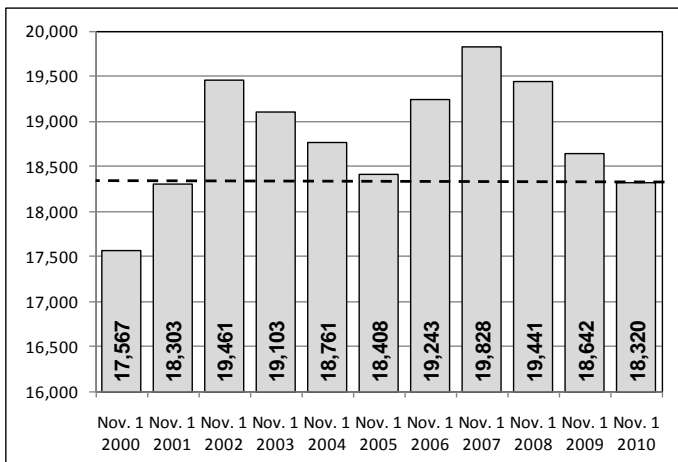
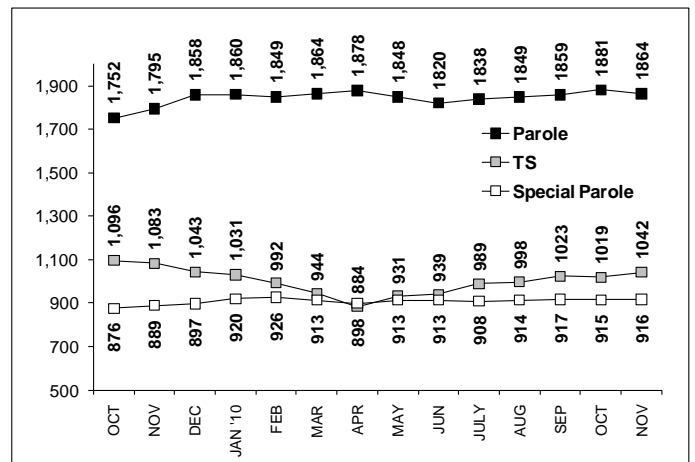


CHART 8 – Parole, TS and Special Parole, supervised cases
October 1, 2009 to November 1, 2010



Note: Data for all charts was supplied by CT DOC. Data in Chart 8 includes all offenders under parole jurisdiction.