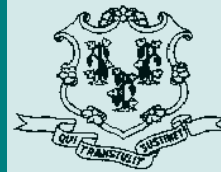


Criminal Justice Policy & Planning Division Monthly Indicators Report



Monthly Indicators are available online at: www.ct.gov/OPM/CriminalJustice/Research

Highlights

- The prison population declined again during November. On December 1st, 18,172 people were incarcerated in Connecticut prisons. This is 223 prisoners below last year's level and 1,004 under the prison count on December 1st 2008 (See Chart 4).
- Monthly releases during November were down 8.8% from last year's levels (See Table 3). Releases to parole during November 2010 were 31.6% below the figure for November 2009. Monthly releases to transitional supervision were also down by 8%, compared with last year. The decline in these release rates are not a cause for immediate concern since the sentenced prison population has also declined since last year.
- Re-entry furloughs, which were suspended by the legislature in February 2008, were reintroduced last November. These furloughs were considered to be an additional discretionary release mechanism that the DOC could use to ease prison overcrowding.
- Adult probation caseloads at CSSD have declined significantly over the past year. In November 2010, CSSD's adult probation caseload was 52,287. A year ago, it was 55,863, a 6% decrease.
- Criminal arrests in November were consistent with monthly, statewide criminal arrest volumes reported in the last three years (See Chart 5). Police agencies made 9,388 criminal arrests during November.

Happy Holidays!

Prison Population Forecast

The State's prison population continued to track the figures projected by OPM in its 2010 Annual Prison Population Forecast. The Average Daily Count for the first 7 days in December was 18,187. In February 2010, OPM had forecast the December ADC at 18,129.

OPM believes that the prison population will fall below 18,000 during the month of December. The last time the prison population on January 1st dipped below 18,000 was in 2006.

TABLE 1 –Prison Population Forecast

	Actual (*Avg Daily Count)	OPM 2010 Forecast	Difference
FEB '10	18,414*	-	-0.09%
MAR	18,309*	18,332	0.12%
APR	18,300*	18,281	-0.10%
MAY	18,265*	18,161	-0.57%
JUN	18,352*	18,156	-1.07%
JUL	18,444*	18,155	-1.57%
AUG	18,500*	18,180	-1.73%
SEP	18,555*	18,323	-1.25%
OCT	18,452*	18,411	-0.22%
NOV	18,291*	18,305	0.08%
DEC	18,187*	18,129	-0.32%
JAN '11	-	17,738	
FEB	-	18,009	

* Average Daily Count, first week of month

An October 2010 study by the Connecticut Regional Institute for the 21st Century, produced a calculation, based on Pew Center methods, that suggested that the optimum range for the sentenced prison population in Connecticut was between 11,375 and 15,050 offenders. The sentenced prison population on the first of December was 13,758. The Institute's findings can be viewed at:

<http://ctregionalinstitute.files.wordpress.com/2010/10/prisonreportppt.pdf>

CHART 1 – Total DOC Facility Population, Actual and Projected
January 1, 2009 through February 1, 2011

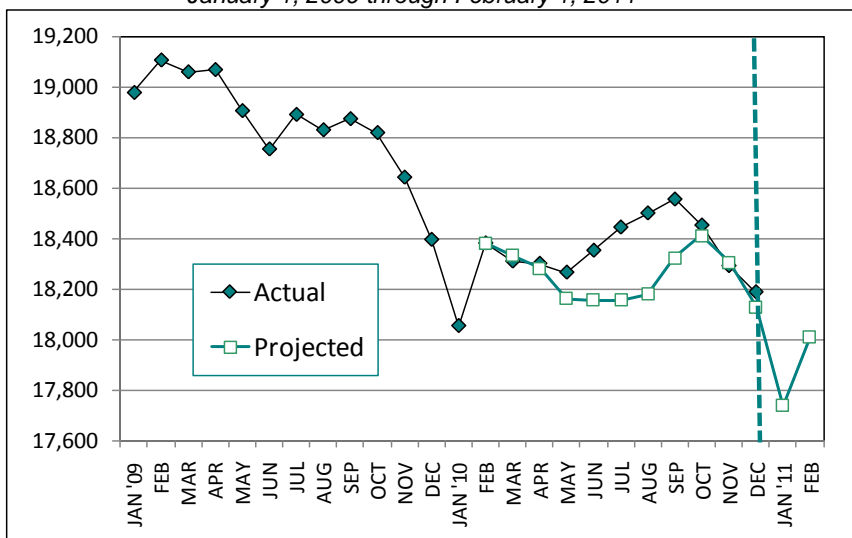
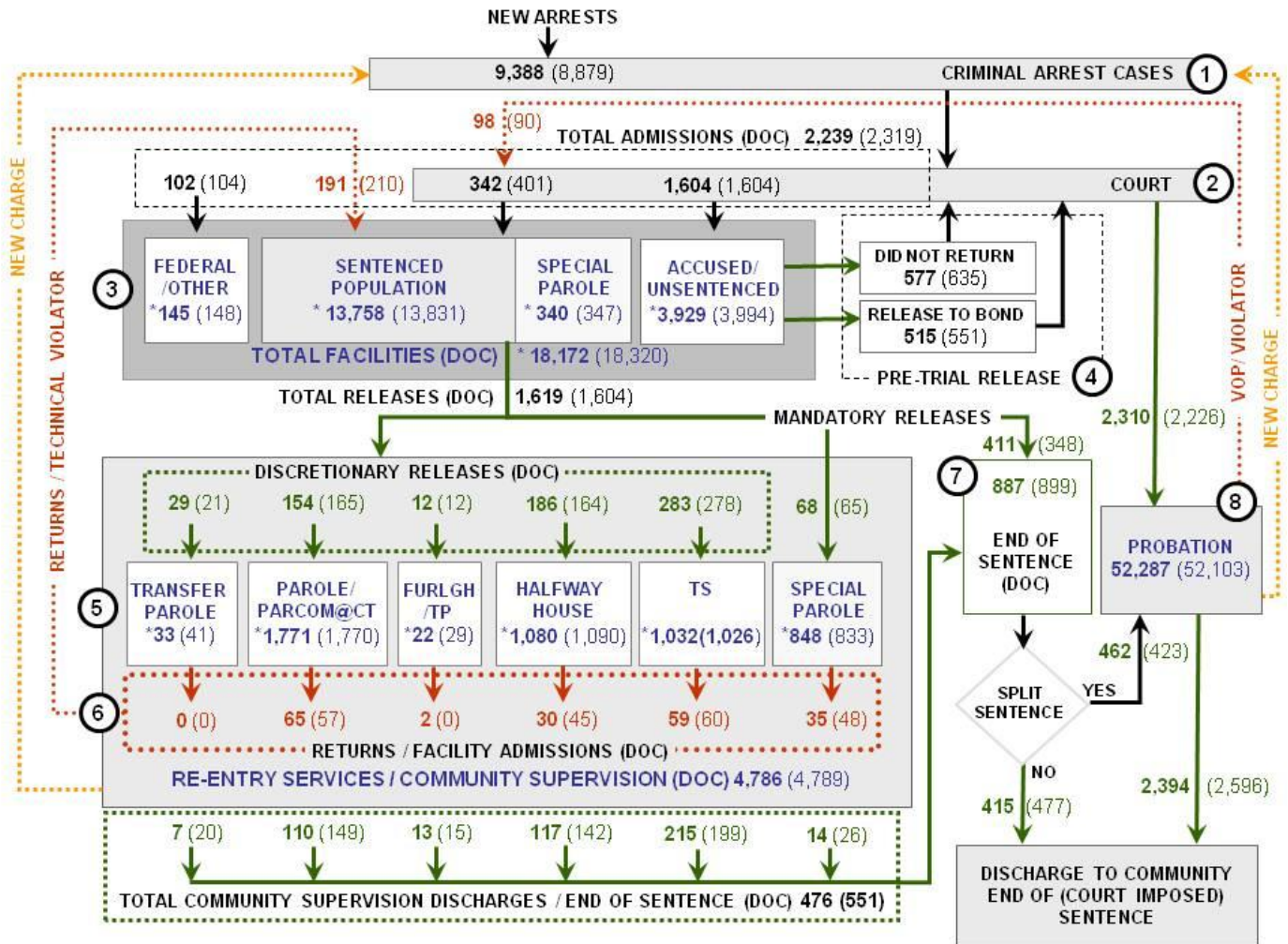


CHART 2 – Connecticut Criminal Justice System – Monthly Overview



Asterisks (*) indicate the population count on December 1, 2010.
 Parentheses enclose figures for the previous month.

Sources: Arrest-Judicial/Court Operations; Court-Judicial/CSSD; Facility/Community Supervision-DOC

Unlike states that have county governments, the majority of agencies within Connecticut's criminal justice system are State agencies. The one exception is law enforcement, where there are over 90 local police departments and the Connecticut State Police.

- 1) Arrest:** An individual enters into the criminal justice system at the time of arrest.
- 2) Court:** At arraignment, judges review the charges filed against the accused and set a bail amount. Individuals who cannot meet bail conditions are incarcerated in DOC facilities to await trial. If the defendant is convicted, they may be sentenced to a range of sanctions including a fine, probation, or a term of incarceration.
- 3) DOC Facilities:** Total facility population at DOC contains the unsentenced population, which is awaiting trial, the sentenced population, inmates who have returned from special parole, and offenders charged in federal cases or non-state cases.
- 4) Pre-Trial Release:** Some defendants who are incarcerated pending the disposition of their cases may be eligible for a bond reduction or placement into pre-trial diversionary programs or treatment programs. These programs feature close coordination and cooperation between DOC, CSSD and the Department of Mental Health and Addiction Services (DMHAS).
- 5) Re-Entry Services:** Depending on several factors, an inmate may be eligible to complete a portion of his/her prison sentence under supervision of the DOC's Parole and Community Services Unit. Non-violent Inmates with sentences shorter than two years are eligible for Transitional Supervision after serving 50% of their sentences. Inmates serving sentences longer than two years may be eligible for parole.
- 6) Returns:** Offenders who violate the conditions of their community release may be returned to prison to complete the remainder of their sentences.
- 7) End of Sentence (EOS):** At the end of their sentences some offenders are required to complete a period of post-release supervision. Split-sentence offenders are supervised by the Judicial Branch's Office of Adult Probation. Offenders sentenced to special parole remain under DOC supervision.
- 8) Violation of Probation:** If an individual violates the terms of their probation, an arrest warrant must be issued, and the violator's case is returned to court.

TABLE 2 – DOC Population Counts, First of the Month

	2010	2010	2010	2009	% Change	
	Oct. 1st	Nov. 1st	Dec. 1st	Dec. 1st	Monthly	Annual
DOC Facility						
Federal/Other	145	148	145	124	-2.1%	16.9%
Sentenced	13,780	13,831	13,758	14,126	-0.5%	-2.6%
Special Parole	354	347	340	313	-2.1%	8.6%
Accused/Unsentenced	4,202	3,994	3,929	3,832	-1.7%	2.5%
Total	18,481	18,320	18,172	18,395	-0.8%	-1.2%
DOC Community						
Transfer Parole	37	41	33	49	-24.2%	-32.7%
Parole/ Parcom Total	1,798	1,770	1,771	1,787	0.1%	-0.9%
Parole	1,625	1,593	1,593	1,625	0.0%	-2.0%
Parcom @ CT	173	177	178	162	0.6%	9.9%
Furlgh/Trans Place Total	27	29	22	53	-31.8%	-58.5%
Furlough	5	8	8	24	0.0%	-
Trans Placement	22	21	14	29	-50.0%	-51.7%
Halfway House Total	1,083	1,090	1,080	1,049	-0.9%	3.0%
Comm Release	905	896	885	885	-1.2%	0.0%
TS	10	16	17	41	5.9%	-58.5%
Parole	83	94	90	71	-4.4%	26.8%
Transfer Parole	2	1	3	1	-	-
Special Parole	83	83	85	51	2.4%	66.7%
TS Total	1,009	1,026	1,032	1,002	0.6%	3.0%
Special Parole	832	833	848	846	1.8%	0.2%
Total	4,786	4,789	4,786	4,786	-0.1%	0.0%

TABLE 3 – DOC Admissions and Releases, Monthly Totals

	2010	2010	2010	2009	% Change	
	Sept.	Oct.	Nov.	Nov.	Monthly	Annual
Admissions						
Federal/Other	95	104	102	73	-1.9%	39.7%
Returns	224	210	191	203	-9.0%	-5.9%
Transfer Parole	0	0	0	0	-	-
Parole	71	57	65	55	14.0%	18.2%
Trans Plac/Furlough	0	0	2	3	-	-
HWH	38	45	30	27	-33.3%	11.1%
TS	67	60	59	71	-1.7%	-16.9%
Special Parole	48	48	35	47	-27.1%	-25.5%
New Sentence	379	401	342	386	-14.7%	-11.4%
VOP	86	90	98	83	8.9%	18.1%
Accused	1,755	1,604	1,604	1,659	0.0%	-3.3%
Total	2,453	2,319	2,239	2,321	-3.4%	-3.5%
Releases						
Transfer Parole	30	21	29	36	38.1%	-19.4%
Parole	214	165	154	225	-6.7%	-31.6%
Trans Plac/Furlough	10	12	12	46	0.0%	-73.9%
HWH	208	164	186	193	13.4%	-3.6%
TS	285	278	283	262	1.8%	8.0%
Special Parole	73	65	68	75	4.6%	-9.3%
End of Sentence	930	899	887	938	-1.3%	-5.4%
Total	1,750	1,604	1,619	1,775	0.9%	-8.8%
Pre-trial Releases*						
Did not return from Court	638	635	577	636	-9.1%	-9.3%
Release to Bond	571	551	515	543	-6.5%	-5.2%

*Monthly totals are measured by occurrence, not by individual.

Parole

Paroles and Parole hearings

The Board considered 267 parole cases at full panel hearings in November. In addition, the Board considered an additional 130 parole violation cases. Eighty-two (82) of these cases resulted in offenders being reparaoled; 65 cases had been revocations; 17 had been rescissions.

TABLE 4A –Paroles Granted, Monthly

	Hearings	Granted	Rate
SEPT	269	213	79%
OCT	282	226	80%
NOV	267	214	80%

Data Notes: Figures are based on the data available at the time of this report. Data in subsequent issues may not agree.

The Board of Pardons and Paroles schedules parole hearing dates up to 18 months before an offender's eligibility date. This should allow the Board to have a greater impact on offender programming while the offender remains incarcerated. It should also provide DOC with more time to develop appropriate reintegration plans for each parolee. If properly implemented, this change should reduce the number of offenders that are incarcerated beyond their parole eligibility dates.

TABLE 4B –Transfer Parole Cases

	Reviewed	Granted	Denied	Continued	Rate
SEPT	265	78	183	4	29%
OCT	220	51	188	31	23%
NOV	243	39	183	21	16%

Probation

Court Support Services Division: total client caseload for November 2010: 52,287; October caseloads: 52,103)

TABLE 5 – Monthly CSSD Direct Sentenced & Probationer Community Placements

	Community Based	Out-patient	Inpatient/ Resident	Total
AUG	1,435	905	30	2,370
SEPT	1,484	1,086	18	2,588
OCT	1,413	1,096	19	2,528

Figures are based on the latest data available at publication time. Figures in subsequent issues may not agree with those published here.

Pre-trial Diversion and Supervision

TABLE 6 – Pre-trial Diversion & Supervision

	Pre-trial Bail Case Starts	Client Supv. Starts
SEPT	2,571	2,333
OCT	2,416	2,226
NOV	2,459	2,310

CHART 3 – Snapshot Daily DOC Facility Population
December 1, 2010 to December 7, 2010

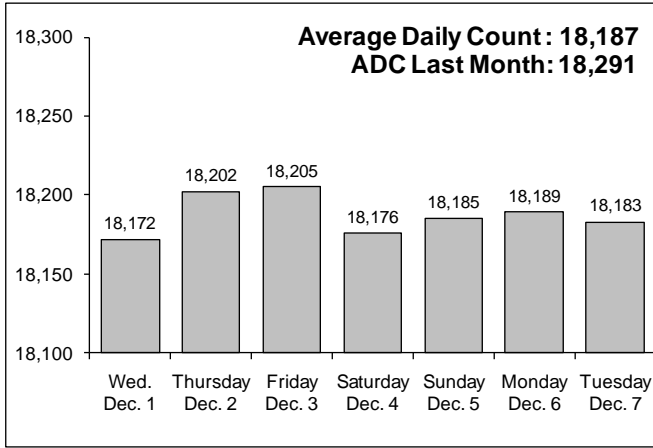


CHART 6 – Monthly DOC Admissions by Type
October 2009 to November 2010

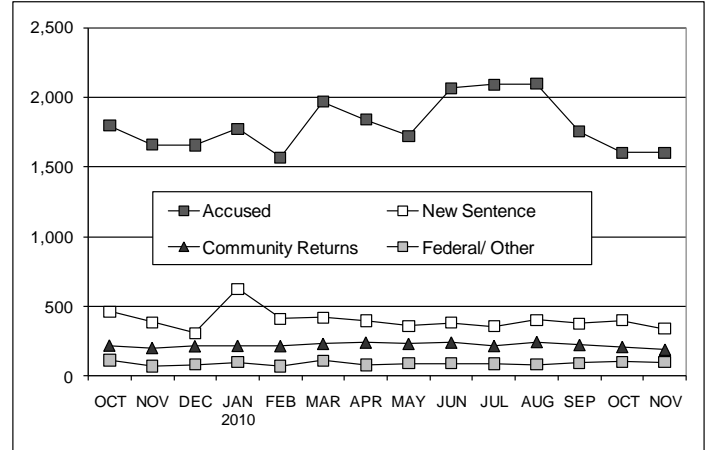


CHART 4 – Prison Population, first-of-month
January 1 through December 1

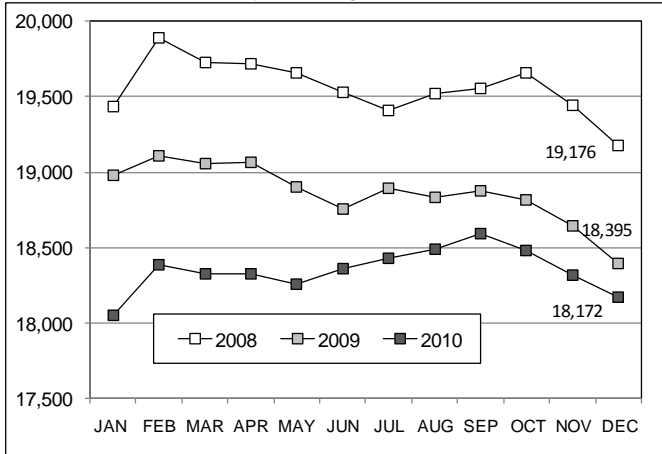


CHART 7 – Monthly Readmissions from Community Release
November 2010



CHART 5 – Monthly arrests, statewide, against 3-year avg.
January through December

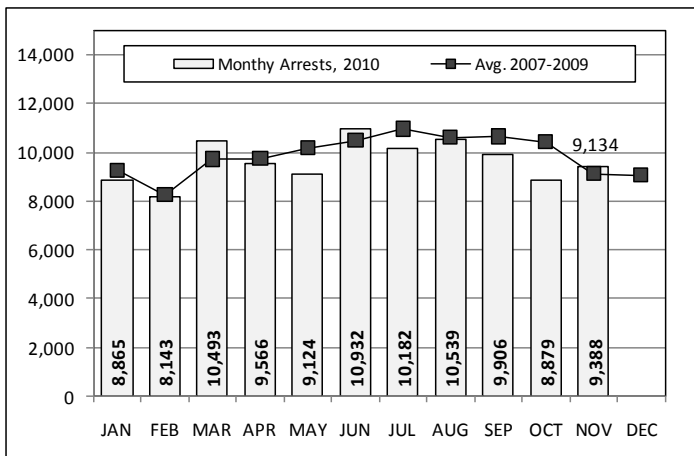
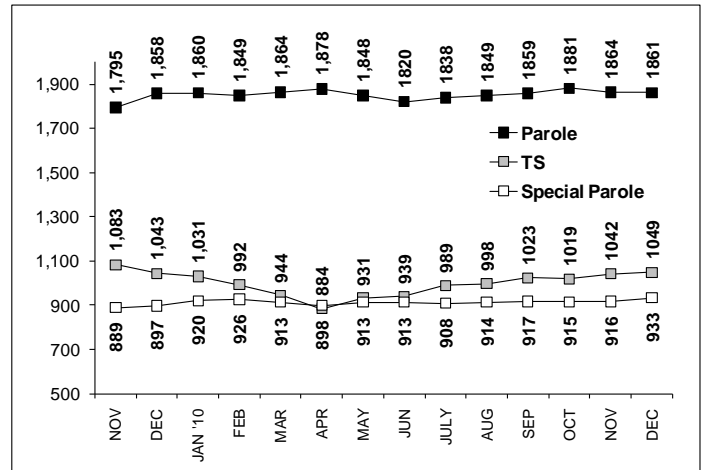


CHART 8 – Parole, TS and Special Parole, supervised cases
November 1, 2009 to December 1, 2010



Note: Data for all charts was supplied by CT DOC. Data in Chart 8 includes all offenders under parole jurisdiction.