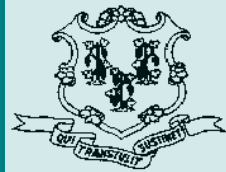


# Criminal Justice Policy & Planning Division Monthly Indicators Report



RESEARCH, ANALYSIS & EVALUATION — WWW.CT.GOV/OPM/CriminalJustice/Research

## Highlights

- The prison population increased by 59 inmates between July 1<sup>st</sup> and August 1<sup>st</sup>. The prisoner count on the first of this month stood at 18,490, which is the highest first-of-the month total since Nov. 2009.
- Despite recent increases, the prison population today is significantly lower than it was a year ago. On August 1<sup>st</sup>, 2009, 18,830 people were incarcerated in Connecticut prisons. In 2008, the count was 19,524 (See Chart 4).
- Despite growth in the size of the prison population, prison admits in July declined by 0.9% from June. The number of releases and discharges, however, fell by 3.2% (See Table 3).
- While total releases and discharges for July 2010 were 5.2% lower than the July 2009 figure, most of this drop is explained by a 10.1% drop in the number of end-of-sentence discharges (See Table 3).
- The number of offenders residing in the DOC's halfway house network continues to increase slowly. This month the number of offenders living in halfway houses topped 1,100, a 5.8% increase over the August 2009 figure.

*CJPPD will soon publish a short report on the recidivism rates of offenders who have been arrested, convicted or incarcerated for weapon-related crimes. The report will be available on the CJPPD's website in September.*

## Prison Population Forecast

The state's prison population increased last month making July 2010 the third consecutive month in which the prison population has risen.

The average prison population during the first week in August was 320 inmates, or 1.7%, higher than the figure forecast by OPM in February. This discrepancy can be explained, almost entirely, by strong, unanticipated growth in the size of the unsentenced prison population. While the sentenced component of the prison population has actually declined in recent months, large increases in unsentenced, primarily accused population have outpaced declines in other areas.

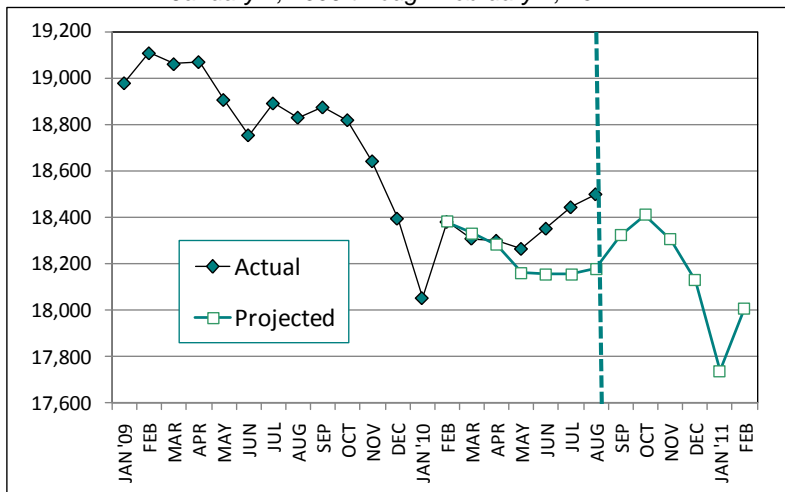
TABLE 1 –Prison Population Forecast

	Actual (*Avg Daily Count)	OPM 2010 Forecast
FEB '10	18,414*	-
MAR	18,309*	18,332
APR	18,300*	18,281
MAY	18,265*	18,161
JUN	18,352*	18,156
JUL	18,444*	18,155
AUG	18,500*	18,180
SEP	-	18,323
OCT	-	18,411
NOV	-	18,305
DEC	-	18,129
JAN '11	-	17,738
FEB	-	18,009

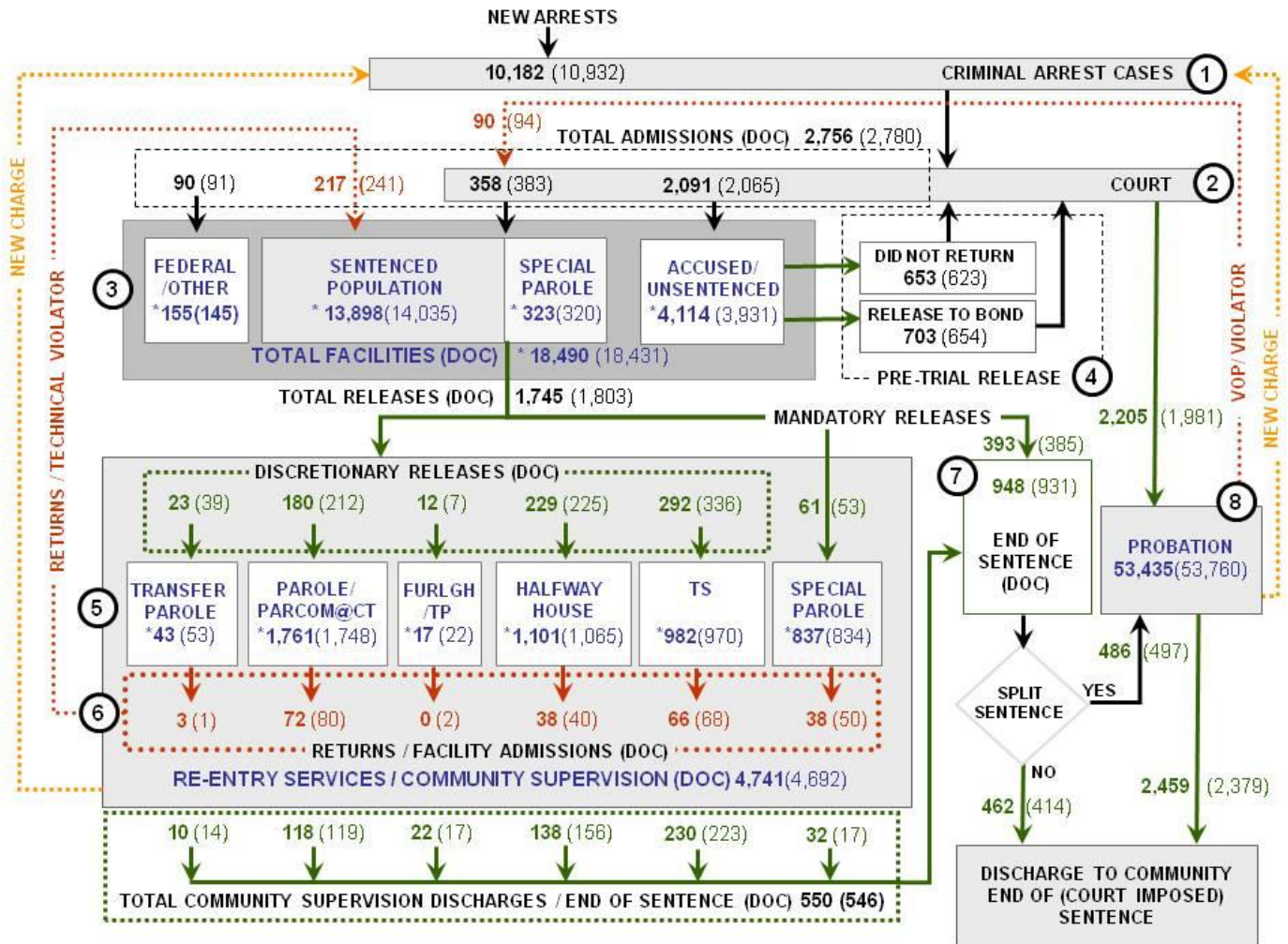
\* Average Daily Count, first week of month

Based on historical trends, OPM anticipates that growth in the number of unsentenced inmates should peak in mid-September and fall back to normal levels. Since the number of statewide, criminal arrests in July, was lower than expected (See Chart 5), the accused population could begin to dip to normal levels even sooner.

CHART 1 – Total DOC Facility Population, Actual and Projected  
January 1, 2009 through February 1, 2011



## CHART 2 – Connecticut Criminal Justice System – Monthly Overview



Asterisks (\*) indicate the single-day population count on July 1, 2010.  
 Numbers enclosed by parentheses contain the previous month's figure.  
 Data shown for New Split Sentence Probationers is approximate due to data reconciliation issues.  
 Sources: Arrest-Judicial/Court Operations; Court-Judicial/CSSD; Facility/Community Supervision-DOC

Unlike states that have county governments, the majority of agencies within Connecticut's criminal justice system are State agencies. The one exception is law enforcement, where there are over 90 local police departments and the Connecticut State Police.

- 1) Arrest:** An individual enters into the criminal justice system at the time of arrest.
- 2) Court:** At arraignment, judges review the charges filed against the accused and set a bail amount. Individuals who cannot meet bail conditions are incarcerated in DOC facilities to await trial. If the defendant is convicted, they may be sentenced to a range of sanctions including a fine, probation, or a term of incarceration.
- 3) DOC Facilities:** Total facility population at DOC contains the unsentenced population, which is awaiting trial, the sentenced population, inmates who have returned from special parole, and offenders charged in federal cases or non-state cases.
- 4) Pre-Trial Release:** Some defendants who are incarcerated pending the disposition of their cases may be eligible for a bond reduction or placement into pre-trial diversionary programs or treatment programs. These programs feature close coordination and cooperation between DOC, CSSD and the Department of Mental Health and Addiction Services (DMHAS).
- 5) Re-Entry Services:** Depending on several factors, an inmate may be eligible to complete a portion of his/her prison sentence under supervision of the DOC's Parole and Community Services Unit. Non-violent Inmates with sentences shorter than two years are eligible for Transitional Supervision after serving 50% of their sentences. Inmates serving sentences longer than two years may be eligible for parole.
- 6) Returns:** Offenders who violate the conditions of their community release may be returned to prison to complete the remainder of their sentences.
- 7) End of Sentence (EOS):** At the end of their sentences some offenders are required to complete a period of post-release supervision. Split-sentence offenders are supervised by the Judicial Branch's Office of Adult Probation. Offenders sentenced to special parole remain under DOC supervision.
- 8) Violation of Probation:** If an individual violates the terms of their probation, an arrest warrant must be issued, and the violator's case is returned to court.

TABLE 2 – DOC Population Counts, First of the Month

	2010	2010	2010	2009	% Change	
	Jun. 1st	Jul. 1st	Aug. 1st	Aug. 1st	Monthly	Annual
<b>DOC Facility</b>						
Federal/Other	146	145	155	160	6.5%	-3.1%
Sentenced	14,155	14,035	13,898	14,486	-1.0%	-4.1%
Special Parole	316	320	323	314	0.9%	2.9%
Accused/Unsentenced	3,747	3,931	4,114	3,870	4.4%	6.3%
<b>Total</b>	<b>18,364</b>	<b>18,431</b>	<b>18,490</b>	<b>18,830</b>	<b>0.3%</b>	<b>-1.8%</b>
<b>DOC Community</b>						
Transfer Parole	60	53	43	57	-23.3%	-24.6%
Parole/ Parcom Total	1,729	1,748	1,761	1,628	0.7%	8.2%
Parole	1,577	1,588	1,599	1,468	0.7%	8.9%
Parcom @ CT	152	160	162	160	1.2%	1.3%
Furlgh/Trans Place Total	35	22	17	30	-29.4%	-43.3%
Furlough	18	6	4	0	-50.0%	-
Trans Placement	17	16	13	30	-23.1%	-56.7%
Halfway House Total	1,046	1,065	1,101	1,041	3.3%	5.8%
Comm Release	873	880	919	858	4.2%	7.1%
TS	15	19	16	83	-18.8%	-80.7%
Parole	91	90	88	55	-2.3%	60.0%
Transfer Parole	0	2	1	0	-	-
Special Parole	67	74	77	45	3.9%	71.1%
TS Total	924	970	982	987	1.2%	-0.5%
Special Parole	846	834	837	825	0.4%	1.5%
<b>Total</b>	<b>4,640</b>	<b>4,692</b>	<b>4,741</b>	<b>4,568</b>	<b>1.0%</b>	<b>3.8%</b>

TABLE 3 – DOC Admissions and Releases, Monthly Totals

	2010	2010	2010	2009	% Change	
	May	June	July	July	Monthly	Annual
<b>Admissions</b>						
Federal/Other	91	91	90	112	-1.1%	-19.6%
Returns	232	241	217	263	-10.0%	-17.5%
Transfer Parole	0	1	3	2	-	-
Parole	81	80	72	71	-10.0%	1.4%
Trans Plac/Furlough	5	2	0	2	-100.0%	-
HWH	46	40	38	40	-5.0%	-5.0%
TS	54	68	66	79	-2.9%	-16.5%
Special Parole	46	50	38	69	-24.0%	-44.9%
New Sentence	361	383	358	406	-6.5%	-11.8%
VOP	82	94	90	104	-4.3%	-13.5%
Accused	1,722	2,065	2,091	2,073	1.3%	0.9%
<b>Total</b>	<b>2,406</b>	<b>2,780</b>	<b>2,756</b>	<b>2,854</b>	<b>-0.9%</b>	<b>-3.4%</b>
<b>Releases</b>						
Transfer Parole	37	39	23	19	-41.0%	21.1%
Parole	164	212	180	176	-15.1%	2.3%
Trans Plac/Furlough	21	7	12	9	71.4%	33.3%
HWH	168	225	229	229	1.8%	0.0%
TS	259	336	292	282	-13.1%	3.5%
Special Parole	58	53	61	70	15.1%	-12.9%
End of Sentence	886	931	948	1,055	1.8%	-10.1%
<b>Total</b>	<b>1,593</b>	<b>1,803</b>	<b>1,745</b>	<b>1,840</b>	<b>-3.2%</b>	<b>-5.2%</b>
<b>Pre-trial Releases*</b>						
Did not return from Court	565	623	653	722	4.8%	-9.6%
Release to Bond	519	654	703	655	7.5%	7.3%

\*Measured by occurrence, not by individual.

**Parole**

**Paroles and Parole hearings**

The Board considered 252 parole cases at full panel hearings during June. In 196 cases, parole was granted and a release date was set. In addition there were 115 parole violation hearings. As a result of these hearings, 77 offenders were reparaoled; 59 for revocations and 18 for rescissions.

TABLE 4A –Paroles Granted, Monthly

	Hearings	Granted	Rate
MAY	319	243	76%
JUN	296	230	78%
JULY	252	196	78%

Data Notes: Figures are based on the data available at the time of this report. Data in subsequent issues may not agree.

The Board of Pardons and Paroles schedules parole hearing dates up to 18 months before an offender's eligibility date. This should allow the Board to have a greater impact on offender programming while the offender remains incarcerated. It should also provide DOC with more time to develop appropriate reintegration plans for each parolee. If properly implemented, this change should reduce the number of offenders that are incarcerated beyond their parole eligibility dates.

TABLE 4B –Transfer Paroles, Apr- July 2010

	Reviewed	Granted	Denied	Continued	Rate
APR	281	89	138	54	32%
MAY	212	66	115	31	31%
JUN	318	82	208	28	26%
JULY	269	80	160	29	30%

**Probation**

**Court Support Services Division caseload for July 2010: 53,435 (June 2010: 53,760)**

TABLE 5 – Monthly CSSD Direct Sentenced & Probationer Community Placements

	Community Based	Out-patient	Inpatient/ Resident	Total
APRIL	1,560	986	21	2,567
MAY	1,377	845	30	2,252
JUN	1,491	965	30	2,252

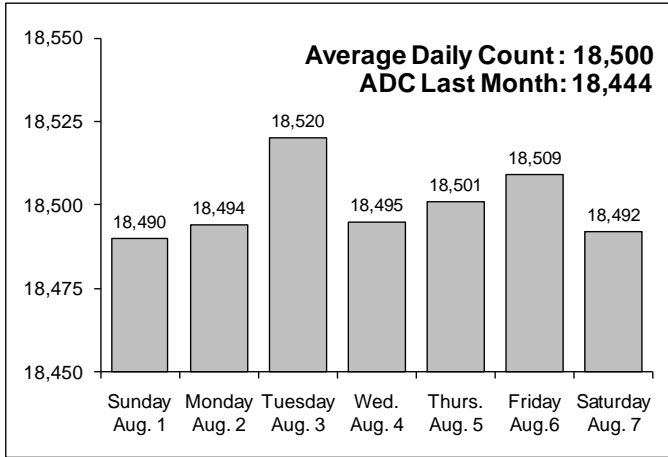
Data Notes: Figures are based on the latest data available at publication time. Figures in subsequent issues may not agree with those published here.

**Pre-trial Diversion and Supervision**

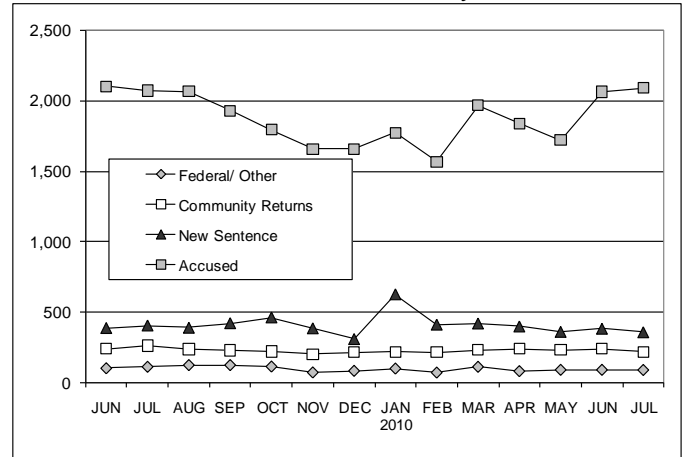
TABLE 6 – Pre-trial Diversion & Supervision

	Pre-trial Bail Case Starts	Client Supv. Starts
MAY	2,652	2,201
JUNE	2,854	1,981
JULY	2,797	2,205

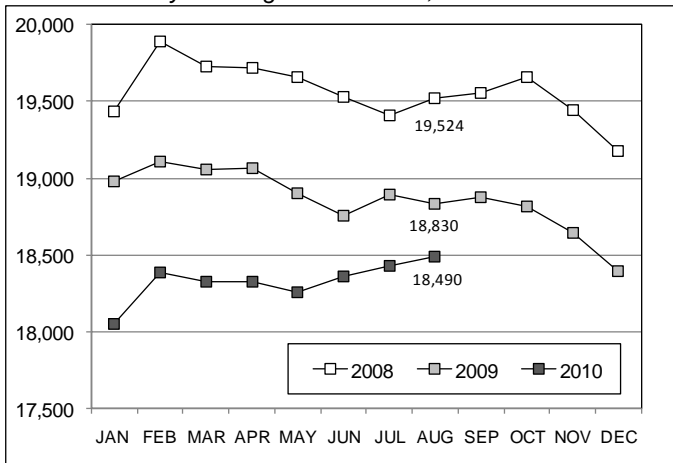
**CHART 3 – Snapshot Daily DOC Facility Population**  
August 1, 2010 to August 7, 2010



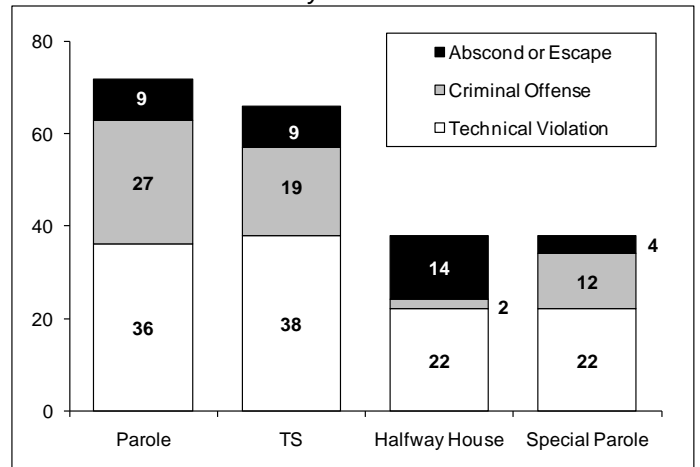
**CHART 6 – Monthly DOC Admissions by Type**  
June 2009 to July 2010



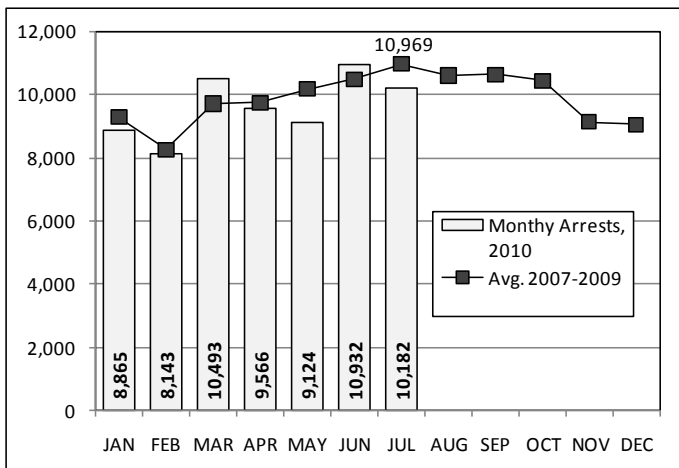
**CHART 4 – Prison Population, first-of-month**  
January 1 through December 1, Calendar Year



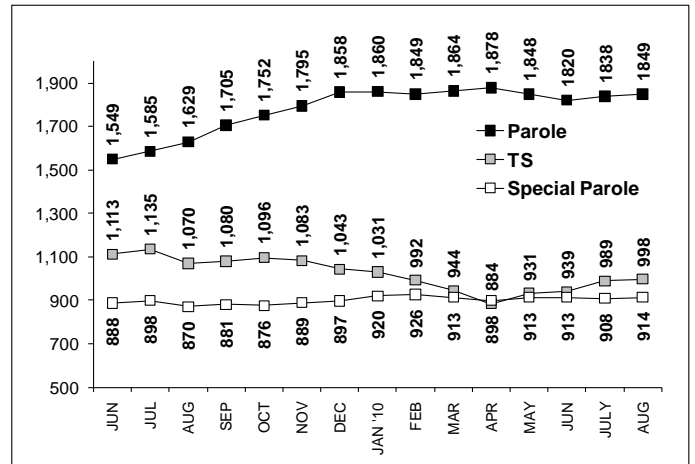
**CHART 7 – Monthly Readmissions from Community Release**  
July 2010



**CHART 5 – Monthly Criminal Arrests**  
Monthly total vs. three-year average



**CHART 8 – Parole, TS and Special Parole, supervised cases**  
June 1, 2009 to August 1, 2010



Note: Data for all charts was supplied by CT DOC. Data in Chart 8 includes all offenders under parole jurisdiction.