

# Criminal Justice Policy & Planning Division Monthly Indicators Report



RESEARCH, ANALYSIS & EVALUATION — WWW.CT.GOV/OPM/CriminalJustice/Research

## Highlights

- The prison population increased, moderately between June 1<sup>st</sup> and July 1<sup>st</sup>. The prisoner count on the first of this month stood at 18,431, which is the highest monthly total since November 2009.
- Despite this month's increase in the prison population, the inmate count on July 1<sup>st</sup> was still significantly lower, 460 inmates or by 2.4%, in 2010 than in 2009 (See Table 2).
- Statewide, criminal arrests rose significantly during June pushing up the number of unsentenced persons who were admitted to DOC facilities.
- Monthly releases to halfway houses were 90% higher this June than in June 2009 (See Table 3). The reason: DOC transitioned to new halfway house bed contracts at this time last year. As a result, the number of halfway house releases dipped in June 2009 as contracts with some community-bed providers ended.
- Releases to transitional supervision (TS) increased by 29.7% between May and June. The TS count on July 1<sup>st</sup> was 989; on April 1<sup>st</sup> it has been 884. Releases to parole were also up significantly in June (See Table 3).

*Participation in CJPAC's Research Workgroup recently expanded to include the Office of the Public Defender and the Office of the Chief State's Attorney. The Workgroup meets at different locations around the state on the second Wednesday of each month.*

## Prison Population Forecast

The state's prison population increased in May and June. The last time that the prison population grew over two consecutive months was in August and September in 2008 (See Chart 4).

An increase in criminal arrests was a major contributor to this month's increase in the prison population. Arrests jumped almost 20% in June over the May figure. As a direct result, the number of unsentenced prison admittances rose by 19.2% from 1,722 to 2,065 (See Chart 2). On July 1<sup>st</sup>, the state's prisons held 184 more unsentenced prisoners than they did on June 1<sup>st</sup>. In contrast, the sentenced population declined by 120 prisoners, dropping from 14,155 to 14,035.

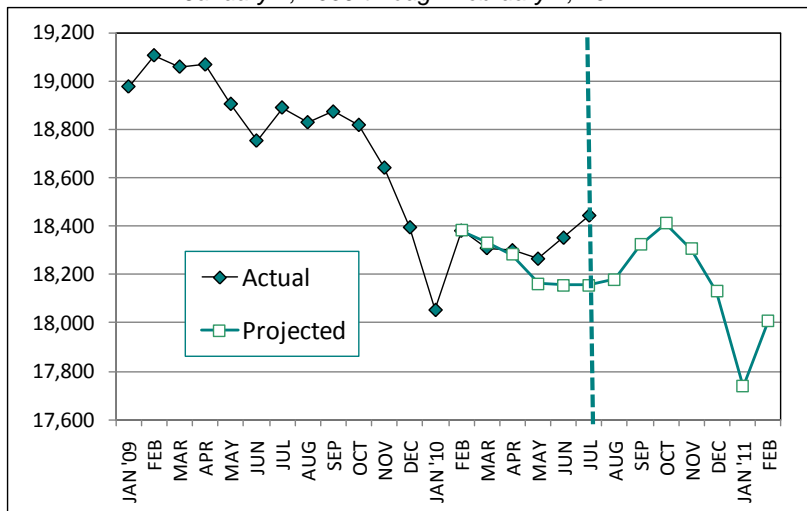
In its February 2010 forecast, OPM projected the state's prison population to fluctuate between 18,000 and 18,500 during 2010. OPM continues to track summertime arrest volumes since police operations can produce arrest surges that impact the prison admittances.

TABLE 1 –Prison Population Forecast

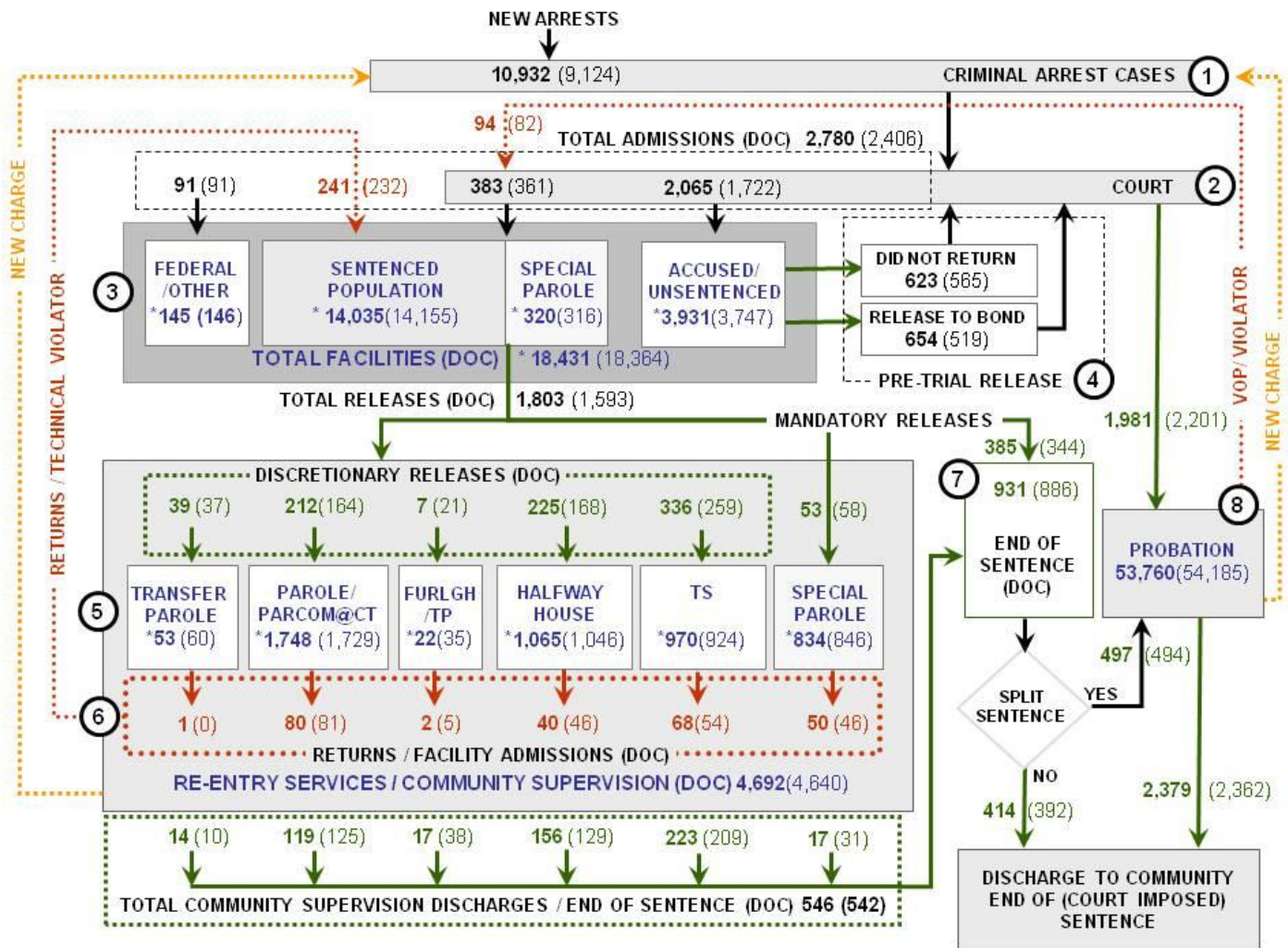
	Actual (*Avg Daily Count)	OPM 2010 Forecast
FEB '10	18,414*	-
MAR	18,309*	18,332
APR	18,300*	18,281
MAY	18,265*	18,161
JUN	18,352*	18,156
JUL	18,444*	18,155
AUG	-	18,180
SEP	-	18,323
OCT	-	18,411
NOV	-	18,305
DEC	-	18,129
JAN '11	-	17,738
FEB	-	18,009

\* Average Daily Count, first week of month

CHART 1 – Total DOC Facility Population, Actual and Projected  
January 1, 2009 through February 1, 2011



## CHART 2 – Connecticut Criminal Justice System – Monthly Overview



Asterisks (\*) indicate the single-day population count on July 1, 2010.  
 Numbers enclosed by parentheses contain the previous month's figure.  
 Data shown for New Split Sentence Probationers is approximate due to data reconciliation issues.  
 Sources: Arrest-Judicial/Court Operations; Court-Judicial/CSSD; Facility/Community Supervision-DOC

Unlike states that have county governments, the majority of agencies within Connecticut's criminal justice system are State agencies. The one exception is law enforcement, where there are over 90 local police departments and the Connecticut State Police.

- 1) Arrest:** An individual enters into the criminal justice system at the time of arrest.
- 2) Court:** At arraignment, judges review the charges filed against the accused and set a bail amount. Individuals who cannot meet bail conditions are incarcerated in DOC facilities to await trial. If the defendant is convicted, they may be sentenced to a range of sanctions including a fine, probation, or a term of incarceration.
- 3) DOC Facilities:** Total facility population at DOC contains the unsentenced population, which is awaiting trial, the sentenced population, inmates who have returned from special parole, and offenders charged in federal cases or non-state cases.
- 4) Pre-Trial Release:** Some defendants who are incarcerated pending the disposition of their cases may be eligible for a bond reduction or placement into pre-trial diversionary programs or treatment programs. These programs feature close coordination and cooperation between DOC, CSSD and the Department of Mental Health and Addiction Services (DMHAS).
- 5) Re-Entry Services:** Depending on several factors, an inmate may be eligible to complete a portion of his/her prison sentence under supervision of the DOC's Parole and Community Services Unit. Non-violent inmates with sentences shorter than two years are eligible for Transitional Supervision after serving 50% of their sentences. Inmates serving sentences longer than two years may be eligible for parole.
- 6) Returns:** Offenders who violate the conditions of their community release may be returned to prison to complete the remainder of their sentences.
- 7) End of Sentence (EOS):** At the end of their sentences some offenders are required to complete a period of post-release supervision. Split-sentence offenders are supervised by the Judicial Branch's Office of Adult Probation. Offenders sentenced to special parole remain under DOC supervision.
- 8) Violation of Probation:** If an individual violates the terms of their probation, an arrest warrant must be issued, and the violator's case is returned to court.

TABLE 2 – DOC Population Counts, First of the Month

	2010	2010	2010	2009	% Change	
	May 1st	Jun. 1st	Jul. 1st	Jul. 1st	Monthly	Annual
<b>DOC Facility</b>						
Federal/Other	146	146	145	162	-0.7%	-10.5%
Sentenced	14,081	14,155	14,035	14,598	-0.9%	-3.9%
Special Parole	319	316	320	273	1.3%	17.2%
Accused/Unsentenced	3,713	3,747	3,931	3,858	4.7%	1.9%
<b>Total</b>	<b>18,259</b>	<b>18,364</b>	<b>18,431</b>	<b>18,891</b>	<b>0.4%</b>	<b>-2.4%</b>
<b>DOC Community</b>						
Transfer Parole	55	60	53	95	-13.2%	-44.2%
Parole/ Parcom Total	1,751	1,729	1,748	1,585	1.1%	10.3%
Parole	1,596	1,577	1,588	1,419	0.7%	11.9%
Parcom @ CT	155	152	160	166	5.0%	-3.6%
Furlgh/Trans Place Total	57	35	22	31	-59.1%	-29.0%
Furlough	38	18	6	0	-200.0%	-
Trans Placement	19	17	16	31	-6.3%	-48.4%
Halfway House Total	1,075	1,046	1,065	994	1.8%	7.1%
Comm Release	890	873	880	796	0.8%	10.6%
TS	16	15	19	100	21.1%	-81.0%
Parole	99	91	90	51	-1.1%	76.5%
Transfer Parole	1	0	2	0	-	-
Special Parole	69	67	74	47	9.5%	57.4%
TS Total	913	924	970	1,035	4.7%	-6.3%
Special Parole	844	846	834	851	-1.4%	-2.0%
<b>Total</b>	<b>4,695</b>	<b>4,640</b>	<b>4,692</b>	<b>4,591</b>	<b>1.1%</b>	<b>2.2%</b>

TABLE 3 – DOC Admissions and Releases, Monthly Totals

	2010	2010	2010	2009	% Change	
	Apr.	May	June	June	Monthly	Annual
<b>Admissions</b>						
Federal/Other	82	91	91	102	0.0%	-10.8%
Returns	241	232	241	241	3.9%	0.0%
Transfer Parole	1	0	1	2	-	-
Parole	81	81	80	62	-1.2%	29.0%
Trans Plac/Furlough	8	5	2	2	-60.0%	-
HWH	42	46	40	54	-13.0%	-25.9%
TS	63	54	68	69	25.9%	-1.4%
Special Parole	46	46	50	52	8.7%	-3.8%
New Sentence	399	361	383	388	6.1%	-1.3%
VOP	88	82	94	102	14.6%	-7.8%
Accused	1,840	1,722	2,065	2,102	19.9%	-1.8%
<b>Total</b>	<b>2,562</b>	<b>2,406</b>	<b>2,780</b>	<b>2,833</b>	<b>15.5%</b>	<b>-1.9%</b>
<b>Releases</b>						
Transfer Parole	32	37	39	25	5.4%	56.0%
Parole	181	164	212	179	29.3%	18.4%
Trans Plac/Furlough	44	21	7	15	-66.7%	-53.3%
HWH	209	168	225	118	33.9%	90.7%
TS	272	259	336	354	29.7%	-5.1%
Special Parole	81	58	53	76	-8.6%	-30.3%
End of Sentence	934	886	931	952	5.1%	-2.2%
<b>Total</b>	<b>1,753</b>	<b>1,593</b>	<b>1,803</b>	<b>1,719</b>	<b>13.2%</b>	<b>4.9%</b>
<b>Pre-trial Releases*</b>						
Did not return from Court	678	565	623	669	10.3%	-6.9%
Release to Bond	630	519	654	667	26.0%	-1.9%

\*Measured by occurrence, not by individual.

**Parole**

**Paroles and Parole hearings**

The Board considered 296 parole cases at full panel hearings during June. In 230 cases, parole was granted and a release date was set. In addition there were 103 parole violation hearings. As a result of these hearings, 68 offenders were reparaoled; 49 for revocations and 19 for rescissions.

TABLE 4A –Paroles Granted, Monthly

	Hearings	Granted	Rate
APR	278	221	79%
MAY	319	243	76%
JUN	296	230	78%

Data Notes: Figures are based on the data available at the time of this report. Data in subsequent issues may not agree.

The Board of Pardons and Paroles is beginning to schedule parole hearing dates up to 18 months before an offender's eligibility date. This should allow the Board to have a greater impact on offender programming while the offender remains incarcerated. It should also provide DOC with more time to develop appropriate reintegration plans for each parolee. If properly implemented, this change should reduce the number of offenders that are incarcerated beyond their parole eligibility dates.

TABLE 4B –Transfer Paroles, March-Jun 2010

	Reviewed	Granted	Denied	Continued	Rate
MAR	283	72	146	65	25%
APR	281	89	138	54	32%
MAY	212	66	115	31	31%
JUN	318	82	208	28	26%

**Probation**

**Court Support Services Division (CSSD) caseload for June 2010: 53,760 (May: 54,185)**

TABLE 5 – Monthly CSSD Direct Sentenced & Probationer Community Placements

	Community Based	Out-patient	Inpatient/ Resident	Total
MAR	1562	1110	27	2,699
APRIL	1560	986	21	2,567
MAY	1377	845	30	2,252

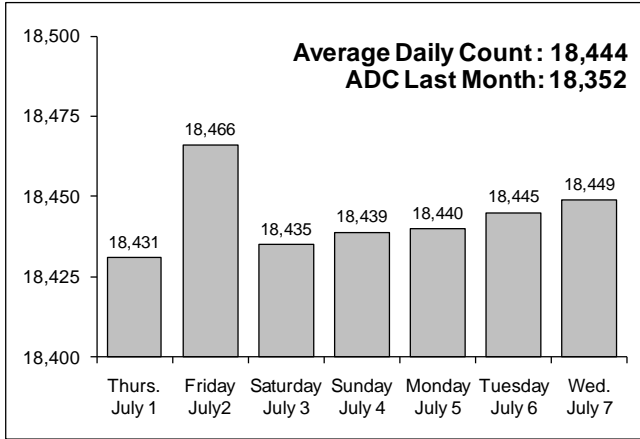
Data Notes: Figures are based on the latest data available at publication time. Figures in subsequent issues may not agree with those published here.

**Pre-trial Diversion and Supervision**

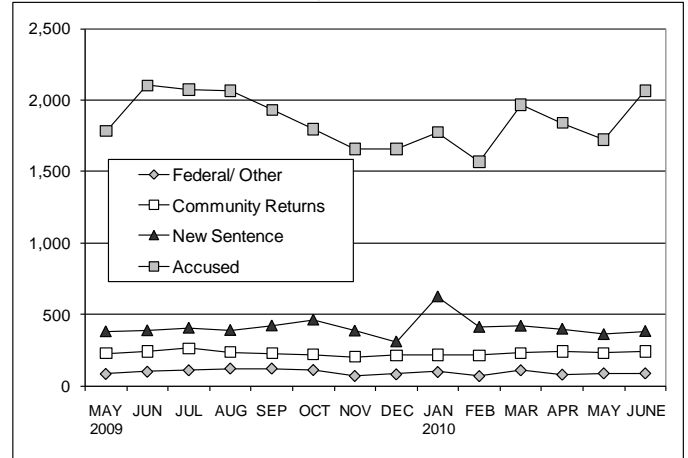
TABLE 6 – Pre-trial Diversion & Supervision

	Pre-trial Bail Case Starts	Client Supv. Starts
APR	2,854	2,271
MAY	2,652	2,201
JUNE	2,854	1,981

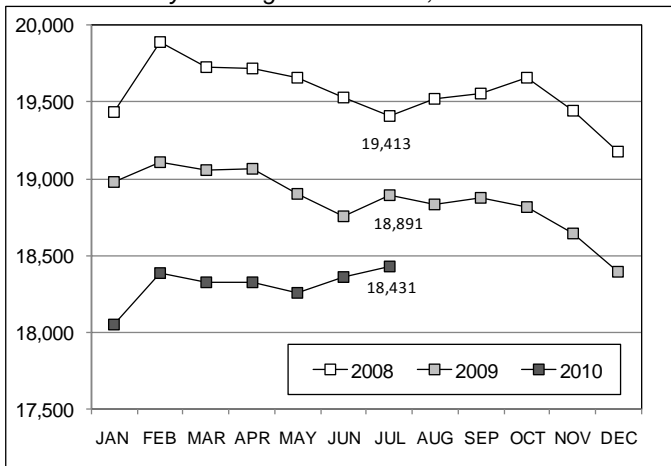
**CHART 3 – Snapshot Daily DOC Facility Population**  
July 1, 2010 to July 7, 2010



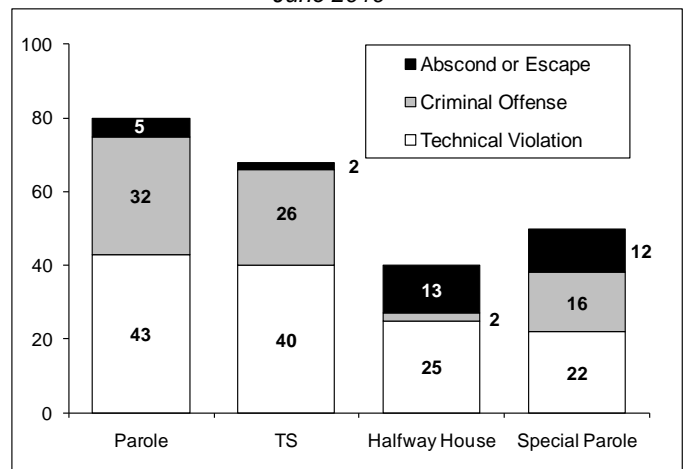
**CHART 6 – Monthly DOC Admissions by Type**  
May 2009 to June 2010



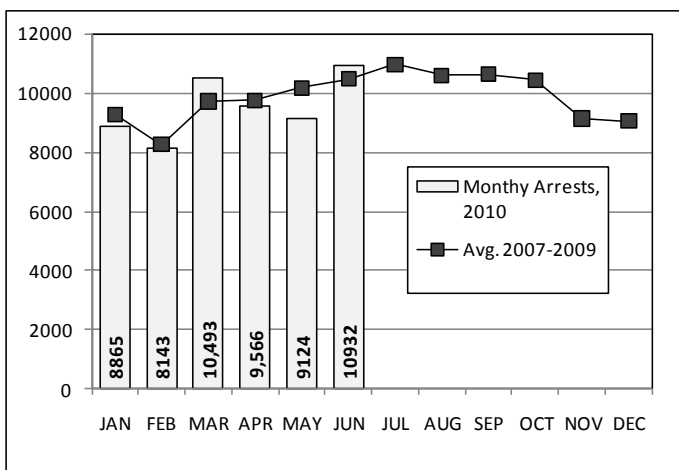
**CHART 4 – Prison Population, first-of-month**  
January 1 through December 1, Calendar Year



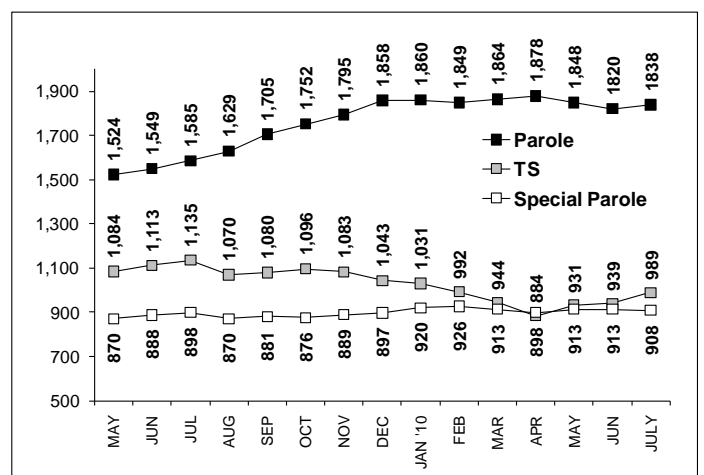
**CHART 7 – Monthly Readmissions from Community Release**  
June 2010



**CHART 5 – Monthly Criminal Arrests**  
Monthly total vs. three-year average



**CHART 8 – Parole, TS and Special Parole, supervised cases**  
May 1, 2009 to July 1, 2010



Note: Data for all charts was supplied by CT DOC. Data in Chart 8 includes all offenders under parole jurisdiction