



Criminal Justice Policy & Planning Division

Monthly Indicators Report

RESEARCH, ANALYSIS & EVALUATION — WWW.CT.GOV/OPM/CriminalJustice/Research

Highlights

- On December 1st the DOC total inmate count was 18,395, 781 less than the figure a year earlier. The number of sentenced offenders incarcerated by the CT DOC dropped by 853 during the same period.
- On December 1st, Gov. Rell announced that Acting DOC Commissioner Brian Murphy had recommended closing Webster CI, a Level Two minimum security facility, in Cheshire. Webster CI opened in 1990. Closing the facility could take 8 to 10 weeks and should result in \$3.4 million in savings. Approximately 220 inmates at Webster will be transferred to other facilities.
- The first offenders eligible for early release under the state's 45-day, prisoner re-entry furlough program began to leave prison facilities in early November. During the month, 37 furloughs were granted.
- The number of offenders on parole has increased by 29% since the beginning of the year. On December 1st, 1,858 offenders were under parole supervision. Seventy-one of these offenders were in halfway houses, the rest were living with sponsors in communities across Connecticut. In comparison, the population on transitional supervision has remained relatively stable during the same period (See Chart 8).

CJPPD will publish its annual report on the prison population featuring a new prison population forecast in February 2010.

Six Month Prison Population Forecast

The prison population continues to decline at a rapid pace. Between October 1st and December 1st, the number of inmates incarcerated in Connecticut fell by 424, a decline in the total prison population of 2.3%.

Steep declines, like the ones we have witnessed over recent months, are not unprecedented. Over the last four years, Connecticut's prison population has grown and fallen in spurts reflecting policy changes and other events (See Chart 5). The

average prison population, for the last 48 months, was 19,050. The DOC has not exceeded that average figure since April 2009.

Based on anecdotal evidence and arrest data, the last 18 months have demonstrated that the prison population can fall substantially without producing a noticeable increase in overall crime rates. It is anticipated that inmate numbers will rebound slightly after the New Year, reflecting typical seasonal patterns, and then begin to level off.

TABLE 1 –Prison Population Forecast

| | 2009 Actual (*Avg Daily) | OPM Forecast | Difference |
|---------|-----------------------------|--------------|------------|
| MAR | 19,053* | 19,095 | 0.2% |
| APR | 19,040* | 19,023 | -0.1% |
| MAY | 18,845* | 18,849 | 0.0% |
| JUN | 18,765* | 18,866 | 0.5% |
| JUL | 18,854* | 18,913 | 0.3% |
| AUG | 18,839* | 18,937 | 0.5% |
| SEP | 18,819* | 19,070 | 1.3% |
| OCT | 18,772* | 18,908 | 0.7% |
| NOV | 18,625* | 18,787 | 0.9% |
| DEC | 18,379* | 18,667 | 1.5% |
| JAN '10 | - | 18,396 | |
| FEB | - | 18,693 | |
| MAR | - | 18,681 | |

CHART 1 – Total DOC Facility Population, Actual and Projected

January 1, 2008 through March 1, 2010

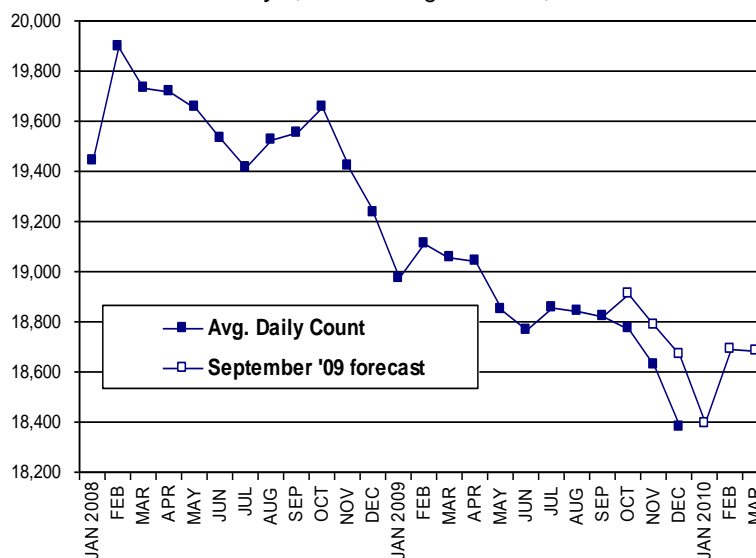
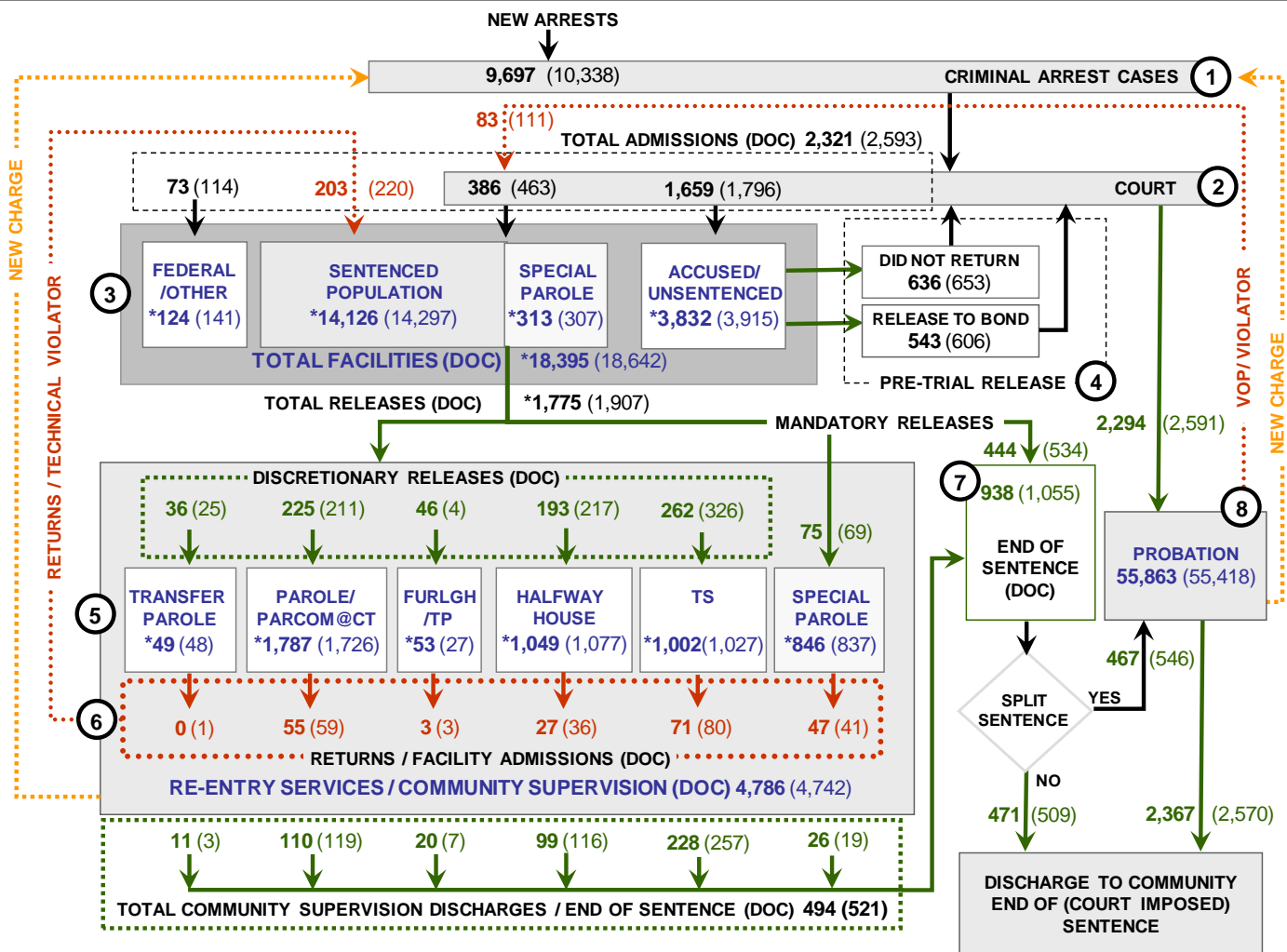


CHART 2 – Connecticut Criminal Justice System Overview



Asterisks (*) indicate the single-day population count on December 1, 2009.
 Numbers enclosed by parentheses contain the figure for the previous month.
 Data shown for New Split Sentence Probationer is only approximate due to processing difficulties.
 Sources: Arrest-Judicial/Court Operations; Court-Judicial/CSSD; Facility/Community Supervision-DOC

Unlike states that have county governments, the majority of agencies within Connecticut's criminal justice system are State agencies. The one exception is law enforcement, where there are over 90 local police departments and the Connecticut State Police.

- 1) Arrest:** An individual enters into the criminal justice system at the time of arrest.
- 2) Court:** During arraignment, judges review the charges filed against the accused and set a bail amount. Individuals who cannot meet the conditions of bail are placed in DOC facilities to await trial. If the defendant is convicted they may be sentenced to serve a period of probation, a term of incarceration or some other sanction.
- 3) DOC Facilities:** Total facility population at DOC contains the unsentenced population, which is awaiting trial, the sentenced population, inmates on special parole, and individuals charged in federal cases or non-state cases.
- 4) Pre-Trial Release:** Some defendants who are incarcerated pending the disposition of their cases may be eligible for a bond reduction or placement into pre-trial diversionary programs or treatment programs. These programs feature close coordination and cooperation between DOC, CSSD and the Department of Mental Health and Addiction Services (DMHAS).
- 5) Re-Entry Services:** Depending on several factors, an inmate may be eligible to complete a portion of his/her prison sentences under supervision of the DOC's Parole and Community Services Unit. Non-violent inmates with sentences shorter than two years are eligible for Transitional Supervision after serving 50% of their sentences. Inmates serving sentences longer than two years may be eligible for parole.
- 6) Returns:** Offenders who violate the conditions of their community release may be returned to prison to serve out the remainder of their sentences.
- 7) End of Sentence:** At the end of their sentences some offenders are required to complete a period of post-release supervision. Split-sentence offenders enter probation where they are monitored by CSSD personnel. Offenders sentenced to special parole remain under DOC supervision.
- 8) Violation of Probation:** If an individual violates the terms of their probation, an arrest warrant is issued and the violator is returned to court.

TABLE 2 – Snapshot of Month DOC Population Counts

| | 2009 | | | 2008 | % Change | |
|--------------------------|---------------|---------------|---------------|---------------|--------------|--------------|
| | Oct. 1st | Nov. 1st | Dec. 1st | Dec. 1st | Monthly | Annual |
| DOC Facility | | | | | | |
| Federal/Other | 153 | 141 | 124 | 123 | -13.7% | 0.8% |
| Sentenced | 14,366 | 14,279 | 14,126 | 14,979 | -1.1% | -5.7% |
| Special Parole | 302 | 307 | 313 | 320 | 1.9% | -2.2% |
| Accused/Unsentenced | 3,998 | 3,915 | 3,832 | 3,754 | -2.2% | 2.1% |
| Total | 18,819 | 18,642 | 18,395 | 19,176 | -1.3% | -4.1% |
| DOC Community | | | | | | |
| Transfer Parole | 53 | 48 | 49 | 66 | 2.0% | -25.8% |
| Parole/ Parcom Total | 1,681 | 1,726 | 1,787 | 1,347 | 3.4% | 32.7% |
| Parole | 1,519 | 1,562 | 1,625 | 1,184 | 3.9% | 37.2% |
| Parcom @ CT | 162 | 164 | 162 | 163 | -1.2% | -0.6% |
| Furlgh/Trans Place Total | 38 | 27 | 53 | 6 | 49.1% | 783.3% |
| Furlough | 0 | 0 | 24 | 0 | - | - |
| Trans Placement | 38 | 27 | 29 | 6 | 6.9% | 383.3% |
| Halfway House Total | 1,064 | 1,077 | 1,049 | 1,229 | -2.7% | -14.6% |
| Comm Release | 869 | 899 | 885 | 928 | -1.6% | -4.6% |
| TS | 75 | 56 | 41 | 168 | -36.6% | -75.6% |
| Parole | 70 | 70 | 72 | 78 | 2.8% | -7.7% |
| Transfer Placement | 0 | 0 | 0 | 0 | - | - |
| Special Parole | 49 | 52 | 51 | 55 | -2.0% | -7.3% |
| TS Total | 1,021 | 1,027 | 1,002 | 896 | -2.5% | 11.8% |
| Special Parole | 828 | 837 | 846 | 750 | 1.1% | 12.8% |
| Total | 4,685 | 4,742 | 4,786 | 4,294 | 0.9% | 11.5% |

TABLE 3 – Total DOC Admissions and Releases by Month

| | 2009 | | | 2008 | % Change | |
|----------------------------|--------------|--------------|--------------|--------------|---------------|-------------|
| | Sept. | Oct. | Nov. | Nov. | Monthly | Annual |
| Admissions | | | | | | |
| Federal/Other | 124 | 114 | 73 | 86 | -36.0% | -15.1% |
| Returns | 229 | 220 | 203 | 191 | -7.7% | 6.3% |
| Transfer Parole | 0 | 1 | 0 | 0 | - | - |
| Parole | 76 | 59 | 55 | 44 | -6.8% | 25.0% |
| Trans Plac/Furlough | 1 | 3 | 3 | 1 | 0.0% | 200.0% |
| HWH | 35 | 36 | 27 | 41 | -25.0% | -34.1% |
| TS | 72 | 80 | 71 | 68 | -11.3% | 4.4% |
| Special Parole | 45 | 41 | 47 | 37 | 14.6% | 27.0% |
| New Sentence | 422 | 463 | 386 | 341 | -16.6% | 13.2% |
| VOP | 109 | 111 | 83 | 90 | -25.2% | -7.8% |
| Accused | 1,931 | 1,796 | 1,659 | 1600 | -7.6% | 3.7% |
| Total | 2,706 | 2,593 | 2,321 | 2,218 | -10.5% | 4.6% |
| Releases | | | | | | |
| Transfer Parole | 47 | 25 | 36 | 17 | 44.0% | 111.8% |
| Parole | 238 | 211 | 225 | 119 | 6.6% | 89.1% |
| Trans Plac/Furlough | 16 | 4 | 46 | 4 | 1050.0% | 1050.0% |
| HWH | 197 | 217 | 193 | 158 | -11.1% | 22.2% |
| TS | 311 | 326 | 262 | 303 | -19.6% | -13.5% |
| Special Parole | 60 | 69 | 75 | 72 | 8.7% | 4.2% |
| End of Sentence | 946 | 1,055 | 938 | 953 | -11.1% | -1.6% |
| Total | 1,815 | 1,907 | 1,775 | 1,626 | -6.9% | 9.2% |
| Pre-trial Releases* | | | | | | |
| Did not return from Court | 677 | 653 | 636 | 651 | -2.6% | 0.3% |
| Release to Bond | 641 | 606 | 543 | 501 | -10.4% | 21.0% |

*Measured by occurrence, not by individual.

Monthly headings in TABLE 3 of last month's report should have read: Aug. Sept. and Oct.

Parole

Paroles Granted During November: 215

The Board considered 279 parole cases at full panel hearings during November. In 215 cases, offenders were granted parole dates; in 64 cases, parole was denied. In addition there were 85 parole violation hearings, resulting in 67 re-paroles (53 revocations and 14 rescissions).

TABLE 4A –Paroles Granted, October 2009

| | Hearings | Granted | Rate |
|-----|----------|---------|------|
| SEP | 240 | 204 | 85% |
| OCT | 278 | 229 | 82% |
| NOV | 279 | 215 | 77% |

Data Notes: Figures are based on the data available at the time of this report. Data in subsequent issues may not agree.

Parole hearings are typically scheduled six months prior to an offender's parole eligibility date. An offender may be released to parole on their first eligibility date or a later time. As a result, the time between parole being granted and the offender being released to parole may take longer than six months.

Transfer Parole Approval Rate: 23%.

Although transfer parole grant rates have remained almost the same, the number of offenders granted transfer parole has increased over the last year. In November 2008, 44 offenders were granted transfer parole.

TABLE 4B –Transfer Paroles, November '09

| | Reviewed | Granted | Denied | Continued | Rate |
|-----|----------|---------|--------|-----------|------|
| SEP | 272 | 55 | 156 | 61 | 20% |
| OCT | 270 | 62 | 130 | 78 | 23% |
| NOV | 256 | 58 | 123 | 75 | 23% |

Probation

Total CSSD (Probation) caseload for November 2009: 55,863 (See Chart 2).

TABLE 5 – Monthly CSSD Direct Sentenced & Probationer Community Placements

| | Community Based | Out-patient | Inpatient/Resident | Total |
|-----|-----------------|-------------|--------------------|-------|
| AUG | 1,334 | 935 | 24 | 2,292 |
| SEP | 1,297 | 1,041 | 20 | 2,358 |
| OCT | 1,505 | 967 | 12 | 2,484 |

* Counting rule change: community based figures now count referrals instead of intakes

Data Notes: Figures are based on the latest data available at publication time. Figures in subsequent issues may not agree with those published here.

Pre-trial Diversion and Supervision

TABLE 6 – Pre-trial Diversion & Supervision

| | Pre-trial Bail Case Starts | Client Supv. Starts |
|-----|----------------------------|---------------------|
| SEP | 2,567 | 2,402 |
| OCT | 2,676 | 2,591 |
| NOV | 2,426 | 2,294 |

CHART 3 – Snapshot Daily DOC Facility Population
December 1, 2009 to December 7, 2009

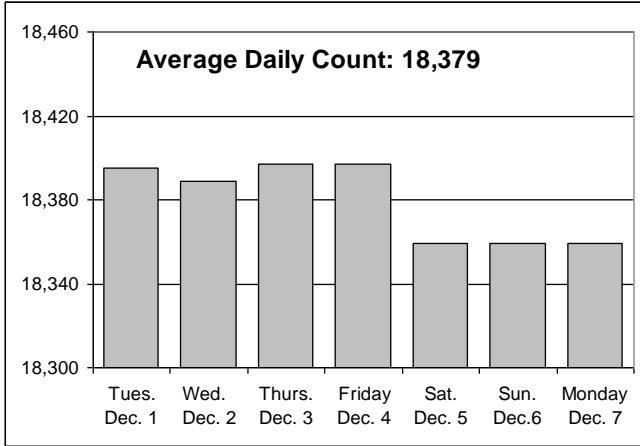


CHART 6 – Monthly DOC Admissions by Type
December 2008 to November 2009

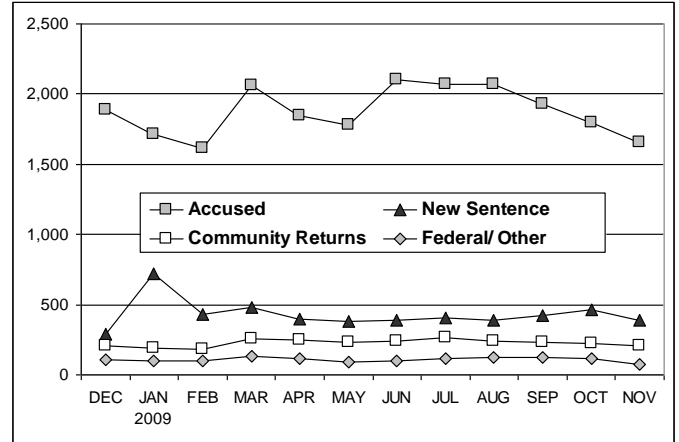


CHART 4 – Snapshot Monthly DOC Prison Population
January 1 through December 1 (Calendar Year)

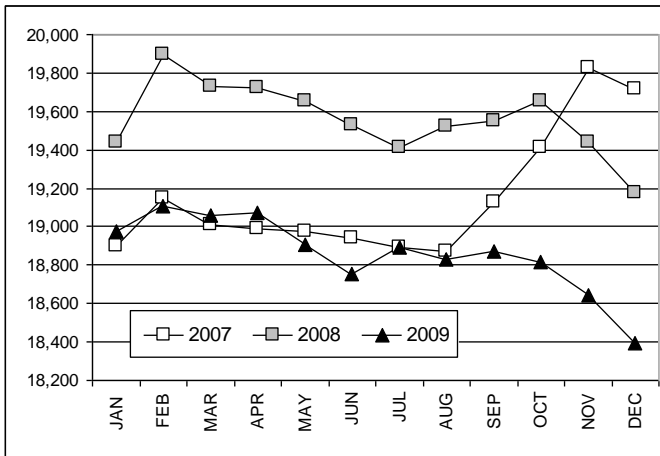


CHART 7 – Monthly Readmissions from Community Release Programs - November 2009

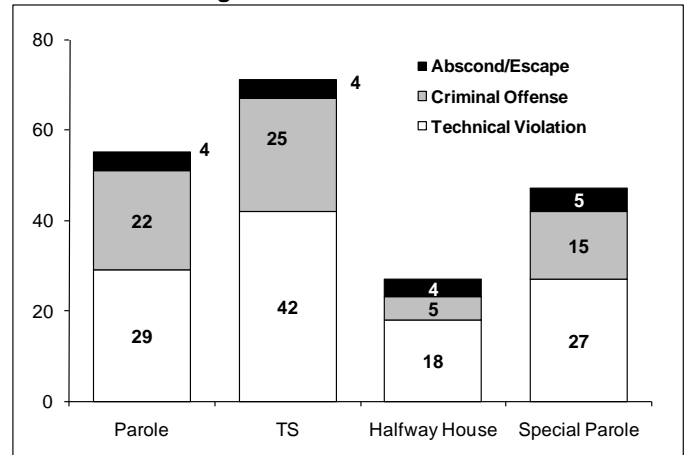


CHART 5 – Prison Population in DOC facilities
January 2006 to December 2009

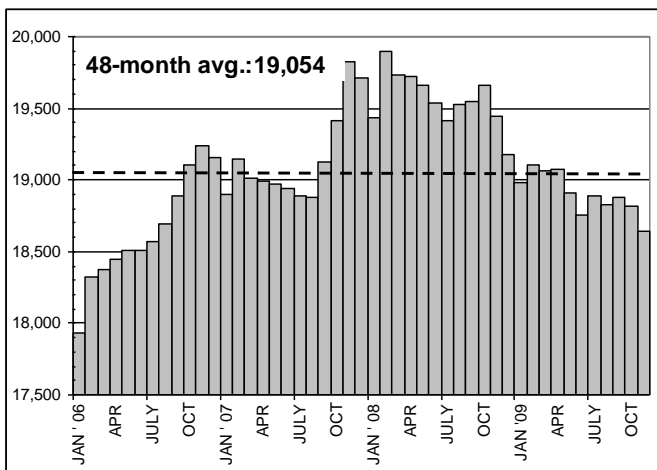
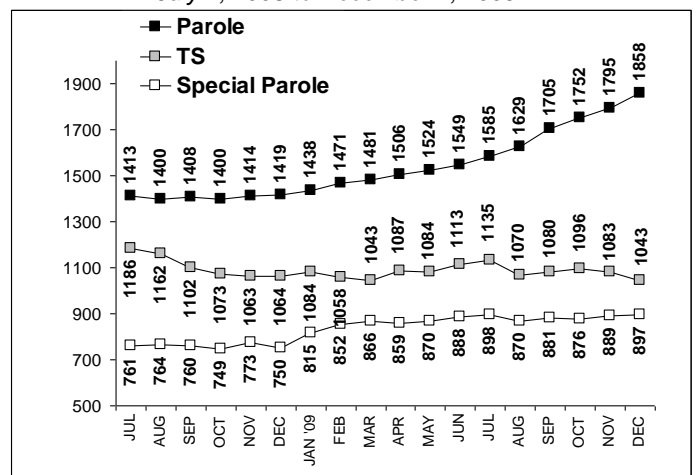


CHART 8 – Snapshot Monthly Parole, TS and Special Parole
July 1, 2008 to December 1, 2009



* Data for charts 3 through 8 were provided by CT DOC
**Parole numbers in Chart 8 include all offenders under parole jurisdiction, including parcom and halfway houses.