

# Criminal Justice Policy & Planning Division Monthly Indicators Report



RESEARCH, ANALYSIS & EVALUATION — WWW.CT.GOV/OPM/CriminalJustice/Research

## Highlights

- On July 1, 2009, 18,891 inmates were incarcerated in CT DOC facilities. A year earlier, on June 1, 2008, the prison population stood at 19,413. June 2009 was the first month since January to show an increase in the prison population.
- The number offenders living in halfway houses declined by 15.4% between June 1 and July 1 (See Table 2). In addition, the number of offenders released to halfway houses between May to June declined by 35.9% (See Table 3). These drops were anticipated and numbers should rebound this month. This past year, DOC renegotiated contracts with its network of community-bed providers. June 30<sup>th</sup> marked the end of the fiscal year and the fall off in community bed utilization reflected DOC's limited capacity to place offenders into community placements with providers whose contracts were due to expire.
- Arrest sweeps often add to the expected seasonal increase in the accused prison population since persons arrested in these sweeps may be less likely, on average, to post bond as quickly or easily as other arrestees.
- During June, the Board of Pardons and Parole heard 336 parole cases. An additional 126 hearings were held to consider parole revocations and rescissions.

Within the next month, CJPPD and the CJPAC's Research Workgroup will begin the preparing the next six-month projection of the prison population. That projection will be published in the September issue of *Monthly Indicators*.

## Six Month Prison Population Forecast

The average prison population during the first seven days of July was 18,854. This figure is lower, by 59 prisoners, than the figure projected in OPM's 6-month population forecast that was published in February.

TABLE 1 – 6-Month Prison Population Forecast

	2009 Actual (*Avg Daily)	6 Month Population Forecast	Difference Actual vs. Projected	% Diff
MAR	19,053*	19,095	-42	-0.2%
APR	19,040*	19,023	17	0.1%
MAY	18,845*	18,849	-4	0.0%
JUN	18,765*	18,866	-101	-0.5%
JUL	18,854*	18,913	-59	-0.3%
AUG	-	18,937	-	-
SEP	-	19,070	-	-

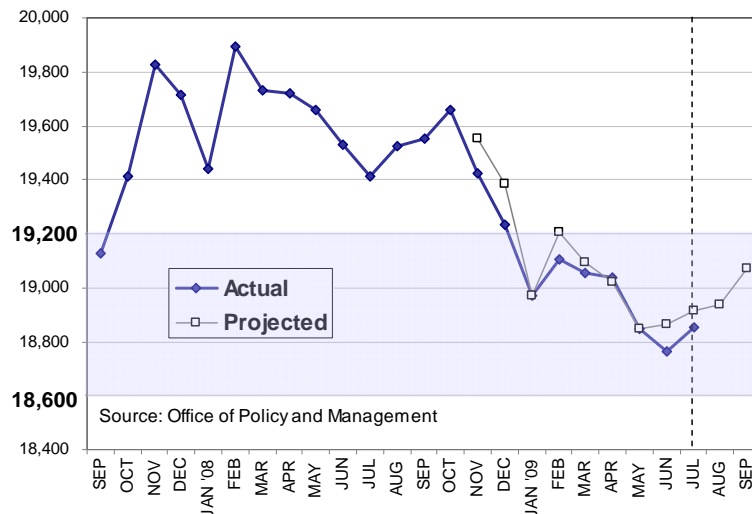
\* Average Daily Count, first week of the month

The rise in the prison population between June and July was anticipated and reflects a seasonal increase in the pace of criminal arrests that occur across the state as the summer progresses. In June, police agencies across the state made 11,712 arrests. This figure was 11% higher than May, when police made 10,548 arrests. (See chart 5)

Although the total facility population in Connecticut prisons grew by only 0.7% between June 1 and July 1, the number of prison admittances for accused offenders rose by 17.9%, 1,783 in May to 2,102 in June (See Tables 2 and 3).

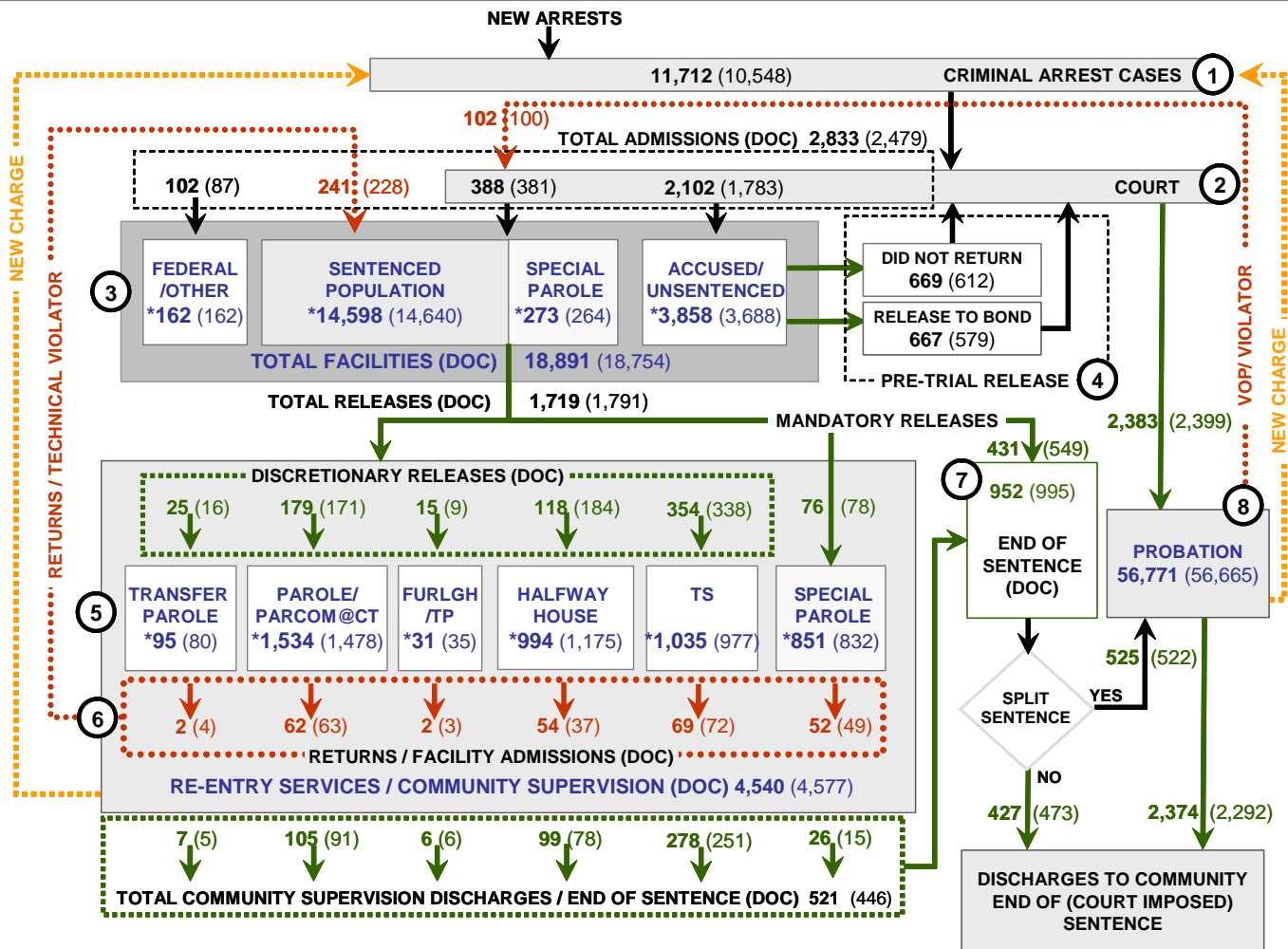
The number of accused offenders released on bond rose by 15%, from 579 in May to 667 in June. (See Chart 2)

CHART 1 – Total DOC Facility Population, Actual and Projected  
September 1, 2007 to September 1, 2009



Source: Office of Policy and Management

## CHART 2 – Connecticut Criminal Justice System Overview



Asterisks (\*) indicate single-day, snapshots of population count on July 1, 2009.  
 Numbers enclosed by parentheses contain figures for the previous month.  
 Data shown for New Split Sentence Probationer is only approximate due to processing difficulties.  
 Sources: Arrest-Judicial/Court Operations; Court-Judicial/CSSD; Facility/Community Supervision-DOC

Unlike states that have county governments, the majority of agencies within Connecticut's criminal justice system are State agencies. The one exception is law enforcement, where there are over 90 local police departments and the Connecticut State Police.

- 1) Arrest:** An individual enters into the criminal justice system at the time of arrest.
- 2) Court:** During arraignment, judges review the charges filed against the accused and set a bail amount. Individuals who cannot meet the conditions of bail are placed in DOC facilities to await trial. If the defendant is convicted they may be sentenced to serve a period of probation, a term of incarceration or some other sanction.
- 3) DOC Facilities:** Total facility population at DOC contains the unsentenced population, which is awaiting trial, the sentenced population, inmates on special parole, and individuals charged in federal cases or non-state cases.
- 4) Pre-Trial Release:** Some defendants who are incarcerated pending the disposition of their cases may be eligible for a bond reduction or placement into pre-trial diversionary programs or treatment programs. These programs feature close coordination and cooperation between DOC, CSSD and the Department of Mental Health and Addiction Services (DMHAS).
- 5) Re-Entry Services:** Depending on several factors, an inmate may be eligible to complete a portion of his/her prison sentences under supervision of the DOC's Parole and Community Services Unit. Non-violent Inmates with sentences shorter than two years are eligible for Transitional Supervision after serving 50% of their sentences. Inmates serving sentences longer than two years may be eligible for parole.
- 6) Returns:** Offenders who violate the conditions of their community release may be returned to prison to serve out the remainder of their sentences.
- 7) End of Sentence:** At the end of their sentences some offenders are required to complete a period of post-release supervision. Split-sentence offenders enter probation where they are monitored by CSSD personnel. Offenders sentenced to special parole remain under DOC supervision.
- 8) Violation of Probation:** If an individual violates the terms of their probation, an arrest warrant is issued and the violator is returned to court.

TABLE 2 – Snapshot of Month DOC Population Counts

	2009			2008	% Change	
	May 1st	June 1st	July 1st	July 1st	Monthly	Annual
<b>DOC Facility</b>						
Federal/Other	146	162	162	157	0.0%	3.2%
Sentenced	14,828	14,640	14,598	15,016	-0.3%	-2.8%
Special Parole	278	264	273	355	3.4%	-23.1%
Accused/Unsentenced	3,654	3,688	3,858	3,885	4.6%	-0.7%
<b>Total</b>	<b>18,906</b>	<b>18,754</b>	<b>18,891</b>	<b>19,413</b>	<b>0.7%</b>	<b>-2.7%</b>
<b>DOC Community</b>						
Transfer Parole	74	80	95	41	18.8%	131.7%
Parole/ Parcom Total	1,447	1,478	1,534	1,350	3.8%	13.6%
Parole	1,286	1,314	1,369	1,192	4.2%	14.8%
Parcom @ CT	161	164	165	158	0.6%	4.4%
Furlough/Trans Place Total	40	35	31	0	-11.4%	
Furlough	0	0	0	0	0.0%	
Trans Placement	40	35	31	0	-11.4%	
Halfway House Total	1,208	1,175	994	1,177	-15.4%	-15.5%
Comm Release	918	912	796	887	-12.7%	-10.3%
TS	155	136	100	171	-26.5%	-41.5%
Parole	77	71	51	65	-28.2%	-21.5%
Transfer Parole	0	0	0	3		
Special Parole	58	56	47	51	-16.1%	-7.8%
TS Total	929	977	1,035	1,013	5.9%	2.2%
Special Parole	812	832	851	708	2.3%	20.2%
<b>Total</b>	<b>4,510</b>	<b>4,577</b>	<b>4,540</b>	<b>4,289</b>	<b>-0.8%</b>	<b>5.9%</b>

TABLE 3 – Total DOC Admissions and Releases by Month

	2009			2008	% Change	
	Apr	May	June	June	Monthly	Annual
<b>Admissions</b>						
Federal/Other	120	87	102	89	17.2%	14.6%
Returns	249	228	241	194	5.7%	24.2%
Transfer Parole	4	4	2	1	-50.0%	-
Parole	60	63	62	47	-1.6%	31.9%
Trans Plac/Furlough	1	3	2	1		
HWH	46	37	54	37	45.9%	45.9%
TS	96	72	69	74	-4.2%	-6.8%
Special Parole	42	49	52	34	6.1%	52.9%
New Sentence	395	381	388	371	1.8%	4.6%
VOP	110	100	102	84	2.0%	21.4%
Accused	1,848	1,783	2,102	2,054	17.9%	2.3%
<b>Total</b>	<b>2,612</b>	<b>2,479</b>	<b>2,833</b>	<b>2,708</b>	<b>14.3%</b>	<b>4.6%</b>
<b>Releases</b>						
Transfer Parole	16	16	25	5	56.3%	400.0%
Parole	178	171	179	135	4.7%	32.6%
Trans Plac/Furlough	18	9	15	-	66.7%	
HWH	200	184	118	141	-35.9%	-16.3%
TS	338	338	354	337	4.7%	5.0%
Special Parole	74	78	76	45	-2.6%	68.9%
End of Sentence	1,008	995	952	1,002	-4.3%	-5.0%
<b>Total</b>	<b>1,832</b>	<b>1,791</b>	<b>1,719</b>	<b>1,665</b>	<b>-4.0%</b>	<b>3.2%</b>
<b>Pre-trial Releases*</b>						
Release to Bond	563	579	667	-	18.5%	-
Did not return from Court	728	612	669	-	-8.1%	-

\*Measured by occurrence, not by individual.

**Parole**

**Paroles Granted During June 2009: 290**

During June, the Board conducted 26 full-panel hearings where they considered 336 cases. In 290 cases, offenders were granted parole dates; in 48 cases they were denied or continued. In addition, 126 hearings were conducted for cases involving parole revocations or rescissions. Of these, 87 cases were granted re-parole.

TABLE 4A –Paroles Granted, June 2009

	Hearings	Granted	Rate
APR	344	296	86%
MAY	347	299	86%
JUN	336	290	86%

Data Notes: Figures are based on actual data available at the time of this report. Subsequent reports may not agree.

Parole hearings are typically held six months prior to an offender's parole eligibility date. An offender may be released to parole on their first eligibility date or a later time. As a result, the time between parole being granted and the offender being released to parole may take longer than six months.

**Transfer Parole Rates for June: 13%.** In June, 428 cases were reviewed for transfer parole. Of these cases 57 were approved, 230 were denied, and 141 were issued continuances.

TABLE 4B –Transfer Paroles Granted, June '09

	Reviewed	Granted	Denied	Continued	Rate
APR	140	43	65	32	31%
MAY	270	59	155	56	22%
JUN	428	57	230	141	13%

**Probation**

**Total number sentenced offenders placed on probation in June: 2,383** (See Chart 2).

TABLE 5 – Monthly CSSD Direct Sentenced & Probationer Community Placements

	Community Based	Out-patient	Inpatient/ Resident	Total
MAR	1,086	959	48	2,093
APR	1,216	991	48	2,255
MAY	1136	770	43	1,949

Data Notes: June 2009 data for Community Placements was not available at the time of this report. Figures are based on data available at publication time. Figures in subsequent issues may not agree with those published here.

**Pre-trial Diversion Supervision**

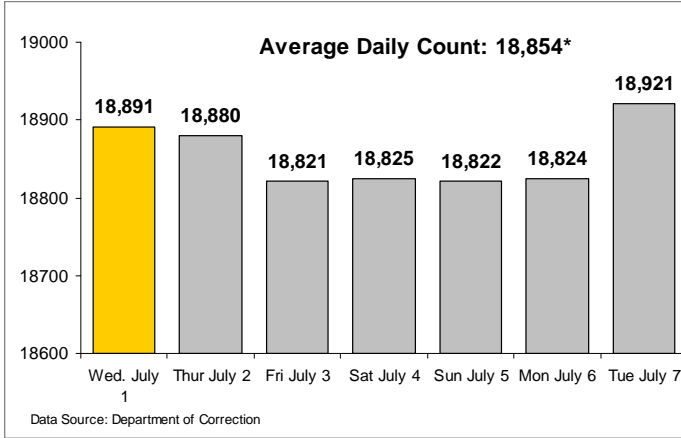
**Total number of offenders released to Pre-trial Diversion/Supervision in June: 3,060.**

This figure includes offenders who were released from DOC facilities.

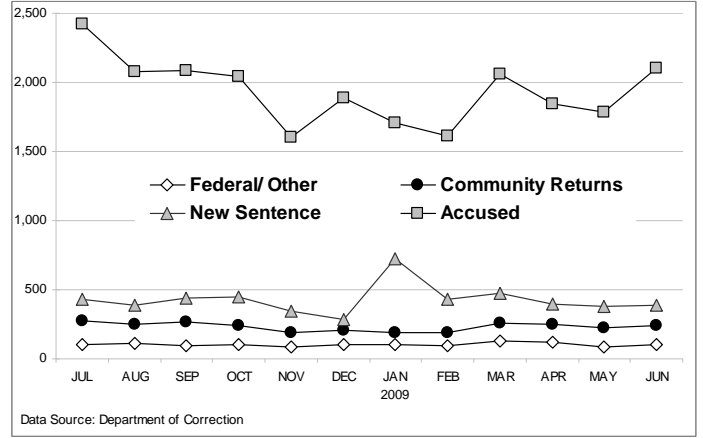
TABLE 6 – Pre-trial Diversion/Supervision

APR	2,819
MAY	2,706
JUNE	3,060

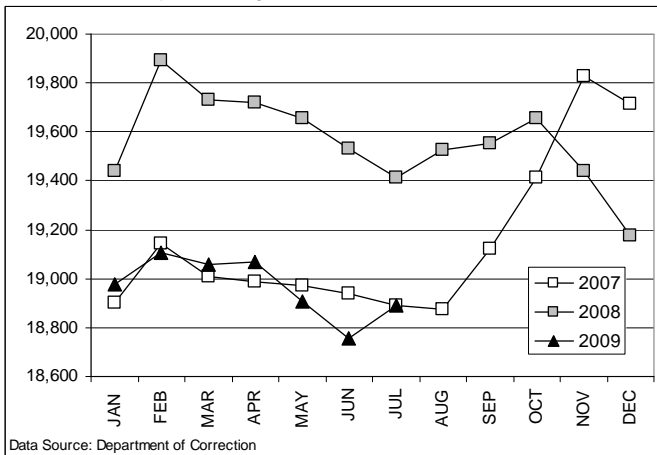
**CHART 3 – Snapshot Daily DOC Facility Population**  
July 1, 2009 to July 7, 2009



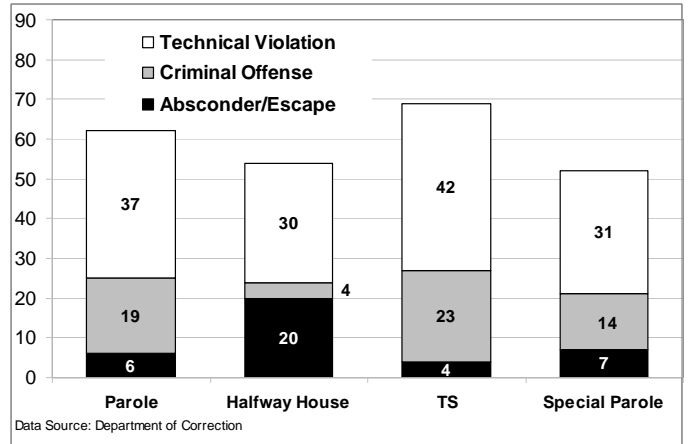
**CHART 6 – Monthly DOC Admissions by Type**  
July 2008 to June 2009



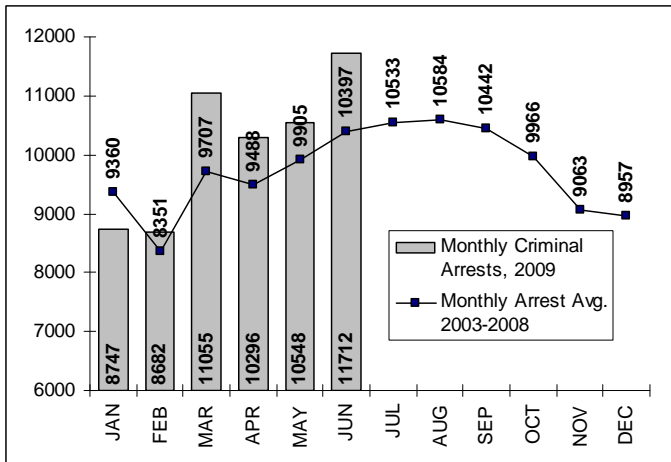
**CHART 4 – Snapshot Monthly DOC Prison Population**  
January 1 through December 1 (Calendar Year)



**CHART 7 – Readmissions from Community Release**  
June 2009



**CHART 5 – Statewide Criminal Arrests, June 2009 total against the 6-year monthly average**  
Monthly, calendar year



**CHART 8 – Snapshot Monthly Parole, TS and Special Parole**  
December 1, 2007 to July 1, 2009

