

Criminal Justice Policy & Planning Division

Monthly Indicators Report



RESEARCH, ANALYSIS & EVALUATION — WWW.CT.GOV/OPM/CriminalJustice/Research

Highlights

- On May 1, 2009, 18,906 inmates were incarcerated in State DOC facilities. This figure represents a decline of 750 prisoners, or 3.8% of the prison population, when compared to May 1st of last year.
- In part, recent declines in the prison population reflect a gradual and steady increase in the number of offenders who are released to community supervision programs. During the first four months of 2008, 504 offenders were released to parole. This year, during the same period, 635 offenders were paroled; a 26% increase.
- The prison population can be considered as two distinct groups: sentenced inmates and accused offenders awaiting trial. Over the past year, the number of accused offenders has also decreased substantially. In fact, there were 4.2% fewer accused offenders incarcerated on May 1st 2009 than in 2008. (See Table 2)
- Statewide criminal arrests over the last two months have been significantly higher than anticipated. OPM will continue to closely monitor the level of arrests in the state. (See Chart 5)
- The Board of Pardons and Parole reported an increase of 20% in its total number of cases heard during the month of April. Cases heard increased from 287 in March to a historic high of 344 during April. (See Table 4A)

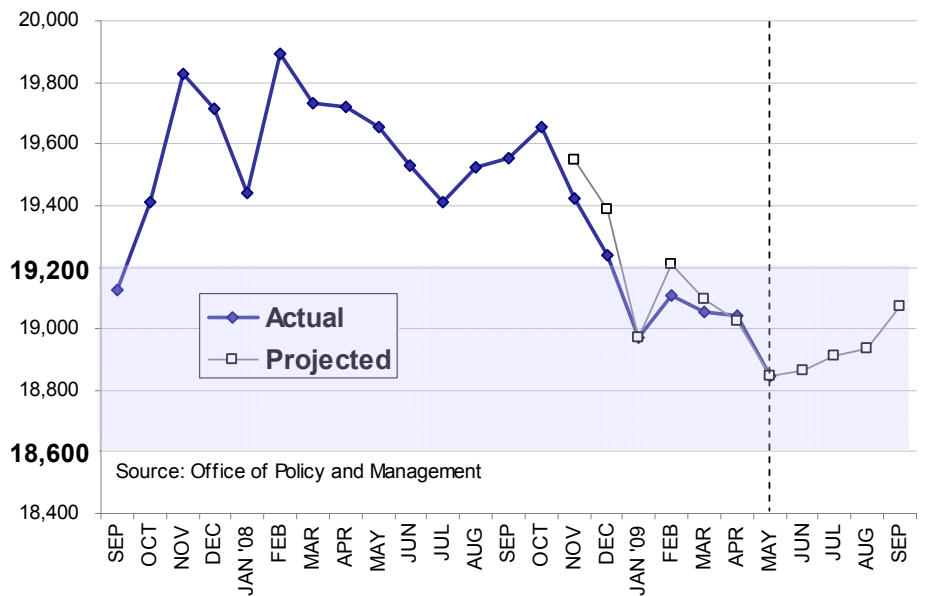
Six Month Prison Population

The average prison population for the first seven days in May was 18,845, a decline of 95 prisoners from the previous month. The prison population has fallen in seven of the last eight months and since October 2008 number of people incarcerated in Connecticut has fallen by over 800.

TABLE 1 – 6-Month Prison Population Forecast

	2009 Actual (*Avg Daily)	6 Month Population Forecast	Difference Actual vs. Projected	% Diff
MAR	19,053*	19,095	-42	-0.2%
APR	19,040*	19,023	17	0.1%
MAY	18,845*	18,849	-4	0.0%
JUN	-	18,866	-	-
JUL	-	18,913	-	-
AUG	-	18,937	-	-
SEP	-	19,070	-	-

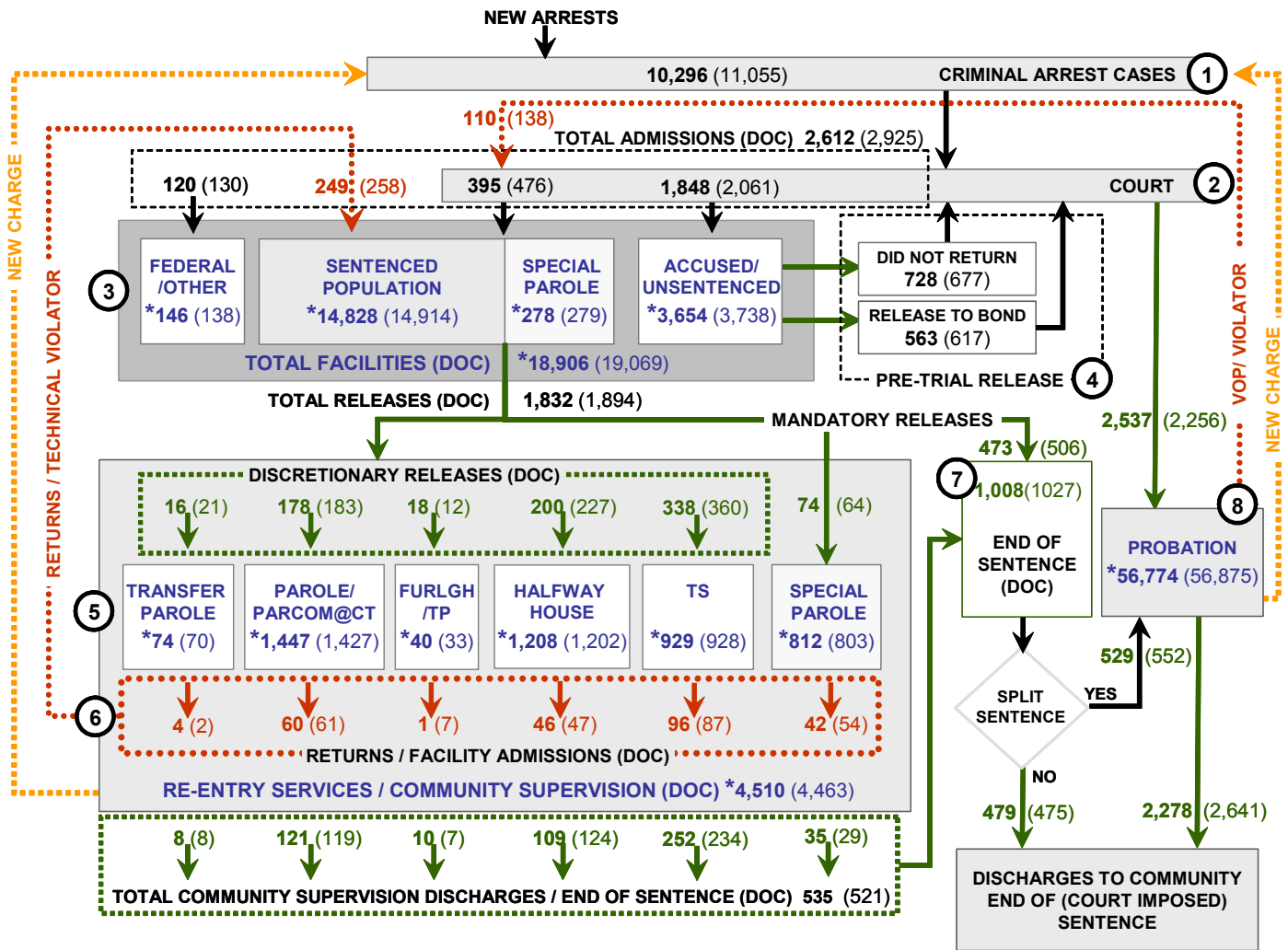
CHART 1 – Total DOC Facility Population, Actual and Projected
September 1, 2007 to September 1, 2009



Source: Office of Policy and Management

CJPPD and CJAC's Research Workgroup would like to acknowledge the departure of Jody Barry, a valued and respected workgroup colleague from the Department of Correction. Jody's knowledge of the DOC data systems, her assistance and her talent for detail were critical in the preparation of this report, the 2009 Recidivism Report and the 2009 Annual Population forecast. We all wish Jody the best.

CHART 2 – Connecticut Criminal Justice System Overview



Asterisks (*) indicate single-day, snapshots of population count on May 1, 2009. Numbers enclosed by parentheses contain figures for the previous month. Data shown for New Split Sentence Probationer is only approximate due to processing difficulties. Sources: Arrest-Judicial/Court Operations; Court-Judicial/CSSD; Facility/Community Supervision-DOC

Unlike states that have county governments, the majority of agencies within Connecticut's criminal justice system are State agencies. The one exception is law enforcement, where there are over 90 local police departments and the Connecticut State Police.

- 1) Arrest:** An individual enters into the criminal justice system at the time of arrest.
- 2) Court:** During arraignment, judges review the charges filed against the accused and set a bail amount. Individuals who cannot meet the conditions of bail are placed in DOC facilities to await trial. If the defendant is convicted they may be sentenced to serve a period of probation, a term of incarceration or some other sanction.
- 3) DOC Facilities:** Total facility population at DOC contains the unsentenced population, which is awaiting trial, the sentenced population, inmates on special parole, and individuals charged in federal cases or non-state cases.
- 4) Pre-Trial Release:** Some defendants who are incarcerated pending the disposition of their cases may be eligible for a bond reduction or placement into pre-trial diversionary programs or treatment programs. These programs feature close coordination and cooperation between DOC, CSSD and the Department of Mental Health and Addiction Services (DMHAS).
- 5) Re-Entry Services:** Depending on several factors, an inmate may be eligible to complete a portion of his/her prison sentences under supervision of the DOC's Parole and Community Services Unit. Non-violent Inmates with sentences shorter than two years are eligible for Transitional Supervision after serving 50% of their sentences. Inmates serving sentences longer than two years may be eligible for parole.
- 6) Returns:** Offenders who violate the conditions of their community release may be returned to prison to serve out the remainder of their sentences.
- 7) End of Sentence:** At the end of their sentences some offenders are required to complete a period of post-release supervision. Split-sentence offenders enter probation where they are monitored by CSSD personnel. Offenders sentenced to special parole remain under DOC supervision.
- 8) Violation of Probation:** If an individual violates the terms of their probation, an arrest warrant is issued and the violator is returned to court.

TABLE 2 – Snapshot of Month DOC Population Counts

	2009			2008	% Change	
	Mar 1st	Apr 1st	May 1st	May 1st	Monthly	Annual
DOC Facility						
Federal/Other	141	138	146	183	5.8%	-20.2%
Sentenced	15,032	14,914	14,828	15,308	-0.6%	-3.1%
Special Parole	275	279	278	349	-0.4%	-20.3%
Accused/Unsentenced	3,612	3,738	3,654	3,816	-2.2%	-4.2%
Total	19,060	19,069	18,906	19,656	-0.9%	-3.8%
DOC Community						
Transfer Parole	59	70	74	38	5.7%	94.7%
Parole/ Parcom Total	1,402	1,427	1,447	1,323	1.4%	9.4%
Parole	1,237	1,273	1,286	1,166	1.0%	10.3%
Parcom @ CT	165	154	161	157	4.5%	2.5%
Furligh/Trans Place Total	33	33	40	0	21.2%	
Furlough	0	0	0	0		
Trans Placement	33	33	40	0	21.2%	
Halfway House Total	1,200	1,202	1,208	1,167	0.5%	3.5%
Comm Release	888	908	918	874	1.1%	5.0%
TS	169	159	155	169	-2.5%	-8.3%
Parole	77	79	77	68	-2.5%	13.2%
Transfer Parole	0	0	0	3		-100.0%
Special Parole	64	56	58	53	3.6%	9.4%
TS Total	874	928	929	992	0.1%	-6.4%
Special Parole	802	803	812	706	1.1%	15.0%
Total	4,370	4,463	4,510	4,226	1.1%	6.7%

TABLE 3 – Total DOC Admissions and Releases by Month

	2009			2008	% Change	
	Feb	Mar	Apr	Apr	Monthly	Annual
Admissions						
Federal/Other	98	130	120	138	-7.7%	-13.0%
Returns	186	258	249	243	-3.5%	2.5%
Transfer Parole	-	2	4	-	100.0%	-
Parole	43	61	60	67	-1.6%	-10.4%
Trans Plac/Furlough	1	7	1	1	-85.7%	0.0%
HWH	52	47	46	39	-2.1%	17.9%
TS	62	87	96	91	10.3%	5.5%
Special Parole	28	54	42	45	-22.2%	-6.7%
New Sentence	430	476	395	411	-17.0%	-3.9%
VOP	123	138	110	92	-20.3%	19.6%
Accused	1,612	2,061	1,848	2,020	-10.3%	-8.5%
Total	2,326	2,925	2,612	2,812	-10.7%	-7.1%
Releases						
Transfer Parole	23	21	16	12	-23.8%	33.3%
Parole	120	183	178	151	-2.7%	17.9%
Trans Plac/Furlough	14	12	18	-	50.0%	
HWH	157	227	200	170	-11.9%	17.6%
TS	270	360	338	383	-6.1%	-11.7%
Special Parole	50	64	74	66	15.6%	12.1%
End of Sentence	893	1,027	1,008	1,020	-1.9%	-1.2%
Total	1,738	1,894	1,832	1,802	-3.3%	1.7%
Pre-trial Releases*						
Release to Bond	508	617	563	-	-8.8%	-
Did not return from Court	595	677	728	-	7.5%	-

*Measured on incidents and not by individuals.

Parole

Paroles Granted During April 2009:

During April 2009, the Board conducted 23 full-panel hearings. They considered 344 cases; 296 were granted parole dates and 48 cases were denied or continued. In addition, hearings were conducted for 77 cases involving parole revocation or rescission. Of these, 55 cases were re-paroled.

TABLE 4A – Monthly Parole Granting Rate

	Hearings	Granted	Rate
FEB	282	237	84%
MAR	287	262	91%
APR	344	296	86%

Data Notes: Figures are based on actual data available at the time of this report. Subsequent reports may not agree.

Parole hearings are typically held six months prior to an offender's parole eligibility date. An offender may be released to parole on their first eligibility date or a later time. As a result, the time between parole being granted and the offender being released to parole may take longer than six months.

Transfer Parole Rates: In April, 140 cases were reviewed for transfer parole. Of these cases 43 were approved, 65 were denied, and 32 received continuances.

TABLE 4B – Monthly Transfer Paroles Granted

	Reviewed	Granted	Denied	Continued	Rate
FEB	153	30	77	46	19.6%
MAR	188	44	90	54	23.4%
APR	140	43	65	32	30.7%

Probation

Total number sentenced offenders placed on probation in February: 2,537 (See Chart 2).

TABLE 5 – Monthly CSSD Direct Sentenced & Probationer Community Placements

	Community Based	Out-patient	Inpatient/ Resident	Total
JAN	1046	843	35	1,924
FEB	939	839	18	1,796
MAR	1086	959	48	2,093

Data Notes: March 2009 data for Community Placements was not available at the time of this report. Figures are based on data available at the time of this report. Subsequent reports of actual figures may not agree.

Pre-trial Diversion Supervision

Total number of offenders released to Pre-trial Diversion/Supervision in February: 2,494. This figure includes offenders who were released from DOC facilities.

TABLE 6 – Pre-trial Diversion/Supervision

FEB	2494
MAR	3067
APR	2819

CHART 3 – Snapshot Daily DOC Facility Population
May 1, 2009 to May 7, 2009

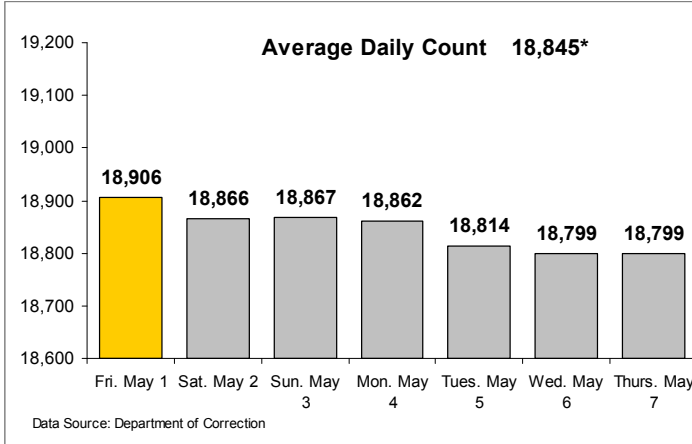


CHART 6 – Monthly DOC Admissions by Type
May 2008 to April 2009

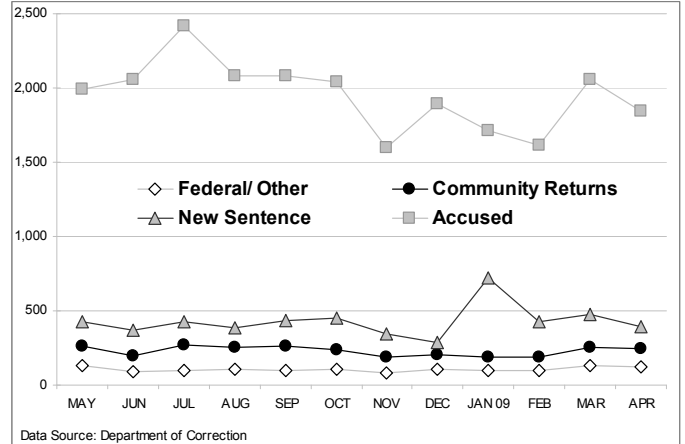


CHART 4 – Snapshot Monthly DOC Prison Population
January through December (Calendar Year)

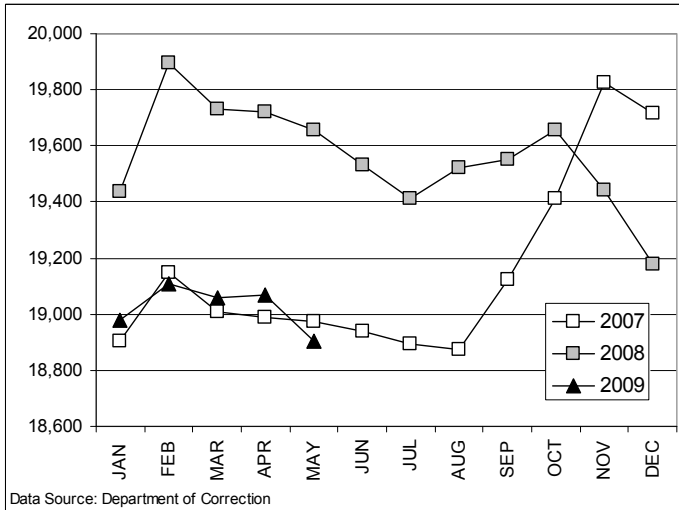


CHART 7 – Community Release Readmission Reasons
April 2009

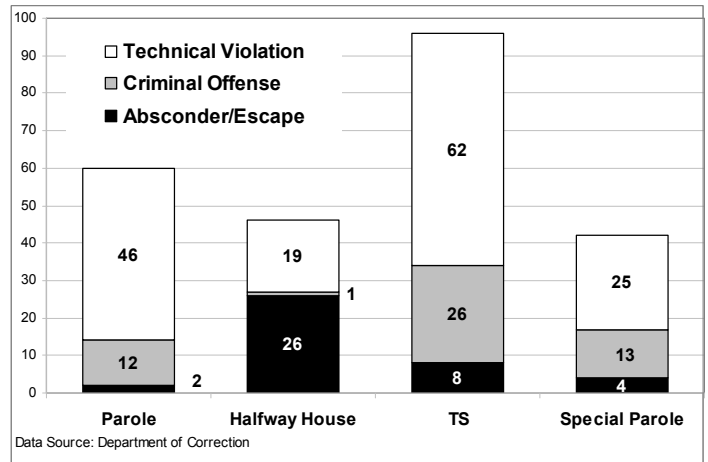


CHART 5 – Statewide Criminal Arrests, Monthly totals in 2009 against the 6-year monthly average
Monthly, calendar year

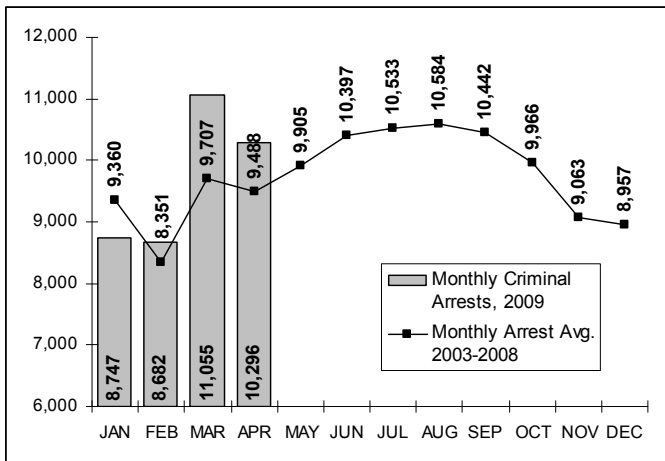


CHART 8 – Snapshot Monthly Parole, TS and Special Parole
September 1, 2007 to May 1, 2009

