



# Criminal Justice Policy & Planning Division

## Monthly Indicators Report

RESEARCH, ANALYSIS & EVALUATION — WWW.CT.GOV/OPM/CriminalJustice/Research

This month's issue of the *Monthly Indicators Report* includes our Year End Supplement with 12-month data tables and a glossary of community supervision types in Connecticut.

- On December 1, 2008, the state's prison population fell to its lowest point for the entire year. At its peak on February 1<sup>st</sup> 2008, 19,893 people were incarcerated in Connecticut. By December 1, 2008, that figure had fallen to 19,176. As a result, inmate overflow areas at two DOC facilities have been closed and another is slated to be closed soon.
- The state's prison population fluctuates on a daily basis over the course of each week reflecting changes in offender flows throughout the criminal justice system. During the first week of December, the daily prison population ranged from 19,176 to 19,258. The average daily count for the first week of December was 19,236\* (See Chart 3).
- Four hundred fewer accused offenders were admitted to DOC facilities in November than in October. During the same period, the intake of sentenced offenders also declined by one hundred. The drop in prison admittances strongly contributed to the overall decline in the monthly prison population in November. (See Table 3)
- The number of offenders released to parole declined slightly this month, falling from 136 to 119. In fact, November saw 152 fewer sentenced offenders released to community programs than October. In the previous two issues, Monthly Indicators Report had projected a significant increase in the number of offenders released to parole. To date, these releases have not materialized. (See Table 3)
- Approximately 1 in 10 persons admitted for a new prison sentence in November received a sentence longer than 2 years. According to DOC figures, 50% of offenders receiving new prison sentences were convicted of drug- or alcohol-related crimes. Roughly 8% of sentences involved crimes against persons. (See Chart 5)

### Six Month Prison Population

In October, OPM's Criminal Justice Policy & Planning Division produced two prison population projections. The first projection was based on historical trends and the use of an input-output model of the state's prison population. The second projection adjusted OPM's initial population projection to include a projected decrease in the prison population based on the ability of added staff at BOPP to reduce the existing backlog of inmates awaiting parole.

According to DOC population figures, the number of inmates exiting DOC facilities for parole did not change substantially again during the month of November. One possible explanation for this is the amount of delay that exists between an offender being granted a parole date and the time it takes to actually leave prison.

CHART 1 – Prison Population Forecast, December 2008

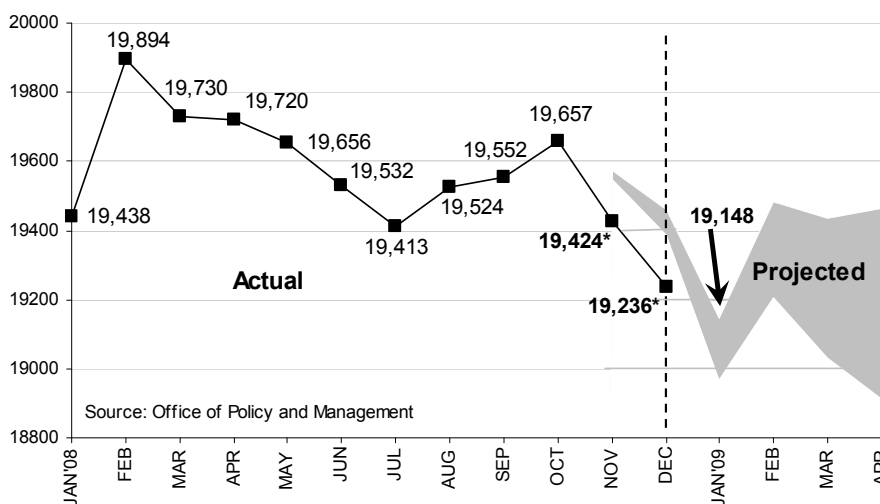
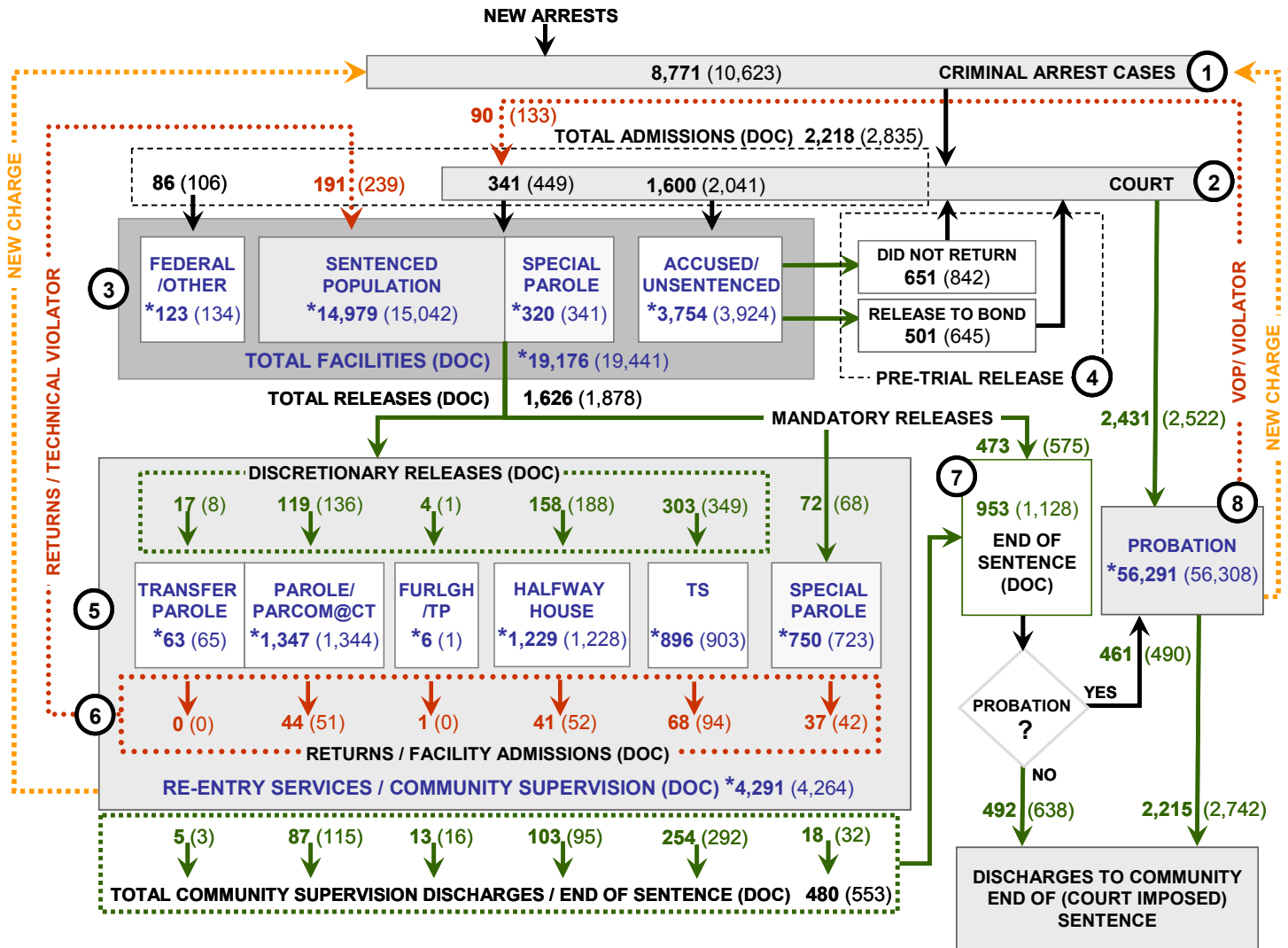


TABLE 1 – Prison Population Forecast

	2008 Actual (*Avg Daily)	6 Month Population Forecast	Potential Parole Releases	Forecast with Parole Releases	Difference Actual vs. Projected	% Diff
AUG	19,524	-	-	-		
SEP	19,552	-	-	-		
OCT	19,657	-	-	-		
NOV	19,424*	19,575	25	19,550	-151	-0.8%
DEC	19,236*	19,461	75	19,386	-225	-1.2%
JAN'09	-	19,148	175	18,973		
FEB	-	19,482	275	19,207		
MAR	-	19,434	400	19,034		
APR	-	19,465	550	18,915		

NOTE: From this point forward, rather than adjusting our forecast each month to reflect the most recent actual prison population, we will prepare two six month forecasts based on system inputs/outputs and data provided by agency partners. Also, we are now calculating an average daily population count from the first 7 calendar days of the month to begin the forecast so as to take into account potentially significant day-of-the-week variations in admission and releases.

## CHART 2 – Connecticut Criminal Justice System Overview



Asterisks (\*) indicate single-day, snapshots of population count on December 1, 2008. Numbers enclosed by parentheses contain figures for the previous month. Data shown for New Split Sentence Probationer is only approximate due to processing difficulties. Sources: Arrest-Judicial/Court Operations; Court-Judicial/CSSD; Facility/Community Supervision-DOC

Unlike states that have county governments, the majority of agencies within Connecticut's criminal justice system are State agencies. The one exception is law enforcement, where there are over 90 local police departments and the Connecticut State Police.

- 1) Arrest:** An individual enters into the criminal justice system at the time of arrest.
- 2) Court:** During arraignment, judges review the charges filed against the accused and set a bail amount. Individuals who cannot meet the conditions of bail are placed in DOC facilities to await trial. If the defendant is convicted they may be sentenced to serve a period of probation, a term of incarceration or some other sanction.
- 3) DOC Facilities:** Total facility population at DOC contains the unsentenced population, which is awaiting trial, the sentenced population, inmates on special parole, and individuals charged in federal cases or non-state cases.
- 4) Pre-Trial Release:** Some defendants who are incarcerated pending the disposition of their cases may be eligible for a bond reduction or placement into pre-trial diversionary programs or treatment programs. These programs feature close coordination and cooperation between DOC, CSSD and the Department of Mental Health and Addiction Services (DMHAS).
- 5) Re-Entry Services:** Depending on several factors, an inmate may be eligible to complete a portion of his/her prison sentences under supervision of the DOC's Parole and Community Services Unit. Non-violent Inmates with sentences shorter than two years are eligible for Transitional Supervision after serving 50% of their sentences. Inmates serving sentences longer than two years may be eligible for parole.
- 6) Returns:** Offenders who violate the conditions of their community release may be returned to prison to serve out the remainder of their sentences.
- 7) End of Sentence:** At the end of their sentences some offenders are required to complete a period of post-release supervision. Split-sentence offenders enter probation where they are monitored by CSSD personnel. Offenders sentenced to special parole remain under DOC supervision.
- 8) Violation of Probation:** If an individual violates the terms of their probation, an arrest warrant is issued and the violator is returned to court.

TABLE 2 – Snapshot of Month DOC Population Counts

	2008			2007	% Change	
	Oct 1st	Nov 1st	Dec 1st	Dec 1st	Monthly	Annual
<b>DOC Facility</b>						
Federal/Other	154	134	123	204	-8.2%	-39.7%
Sentenced	15,005	15,042	14,979	15,182	-0.4%	-1.3%
Special Parole	350	341	320	369	-6.2%	-13.3%
Accused/Unsentenced	4,148	3,924	3,754	3,959	-4.3%	-5.2%
<b>Total</b>	<b>19,657</b>	<b>19,441</b>	<b>19,176</b>	<b>19,714</b>	<b>-1.4%</b>	<b>-2.7%</b>
<b>DOC Community</b>						
Transfer Parole	60	65	63	32	8.3%	96.9%
Parole/ Parcom Total	1,324	1,344	1,347	1,349	1.5%	-0.1%
Parole	1,166	1,182	1,184	1,196	1.4%	-1.0%
Parcom @ CT	158	162	163	153	2.5%	6.5%
Trans Plac/Furlgh Total	-	1	6	-	NA	-
Furlough	-	-	-	-	NA	-
Trans Placement	-	1	6	-	NA	NA
Halfway House Total	1,210	1,228	1,229	1,094	1.5%	12.3%
Comm Release	933	944	928	900	1.2%	3.1%
TS	158	159	168	85	0.6%	97.6%
Parole	75	74	77	65	-1.3%	18.5%
Transfer Parole	1	1	1	3	0.0%	-66.7%
Special Parole	43	50	55	41	16.3%	34.1%
TS Total	914	903	896	901	-1.2%	-0.6%
Special Parole	706	723	750	625	2.4%	20.0%
<b>Total</b>	<b>4,214</b>	<b>4,264</b>	<b>4,291</b>	<b>4,001</b>	<b>1.2%</b>	<b>7.2%</b>

TABLE 3 – Total DOC Admissions and Releases by Month

	2008			2007	% Change	
	Sep	Oct	Nov	Nov	Monthly	Annual
<b>Admissions</b>						
Federal/Other	95	106	86	129	-18.9%	-33.3%
Returns	265	239	191	186	-20.1%	2.7%
Transfer Parole	2	-	-	-	N/A	N/A
Parole	68	51	44	45	-13.7%	-2.2%
Trans Plac/Furlough	1	-	1	3	-	-66.7%
HWH	52	52	41	33	-21.2%	24.2%
TS	95	94	68	82	-27.7%	-17.1%
Special Parole	47	42	37	23	-11.9%	60.9%
New Sentence	438	449	341	221	-24.1%	54.3%
VOP	115	133	90	48	-32.3%	87.5%
Accused	2,085	2,041	1,600	1,635	-21.6%	-2.1%
<b>Total</b>	<b>2,883</b>	<b>2,835</b>	<b>2,218</b>	<b>2,171</b>	<b>-21.8%</b>	<b>2.2%</b>
<b>Releases</b>						
Transfer Parole	12	8	17	9	112.5%	88.9%
Parole	132	136	119	67	-12.5%	77.6%
Trans Plac/Furlough	-	1	4	157	300.0%	-97.5%
HWH	165	188	158	107	-16.0%	47.7%
TS	302	349	303	171	-13.2%	77.2%
Special Parole	52	68	72	42	5.9%	71.4%
End of Sentence	966	1,128	953	944	-15.5%	1.0%
<b>Total</b>	<b>1,629</b>	<b>1,878</b>	<b>1,626</b>	<b>1,497</b>	<b>-13.4%</b>	<b>8.6%</b>
<b>Pre-trial Releases*</b>						
Release to Bond	637	645	501	-	-22.3%	-
Did not return from Court	768	842	651	-	-22.7%	-

\*Measured on incidents and not by individuals.

**Parole**

**Paroles Granted During November 2008:**  
During November 2008, the Board conducted 255 full panel hearings in which 217 applicants were granted parole. In addition, the Board conducted 56 violation hearings of which 43 were granted a re-parole.

TABLE 4A – Monthly Parole Granting Rate

	Hearings	Granted	Rate
SEP	286	221	77%
OCT	262	218	83%
NOV	255	217	85%

Parole hearings are typically held six months prior to an offender's parole eligible date. An offender may be granted parole on their first date of eligibility or a later date and therefore would not be released immediately. In fact release to parole for some offenders may be offset by more than six months.

**Transfer Parole Rates:** In November, 177 cases were reviewed for transfer parole. Of these cases 44 were approved, 67 were denied and 66 were continued.

TABLE 4B – Monthly Transfer Paroles Granted

	Reviewed	Granted	Denied	Continued	Rate
SEP	81	23	49	9	28.4%
OCT	135	25	74	36	18.5%
NOV	177	44	67	66	24.9%

**Probation**

**Total number of sentenced offenders placed on probation in November was 2,431 (See Chart 2).**

TABLE 5 – Monthly CSSD Direct Sentenced & Probationer Community Placements

	Community Based	Out-patient	Inpatient/ Resident	Total
AUG	1,091	712	39	1,842
SEP	1,077	802	43	1,922
OCT	1089	754	30	1,873

*Data Notes: November 2008 data for Community Placements was not available at the time of this report. Figures are based on data available at the time of this report. Subsequent reports of actual figures may not agree.*

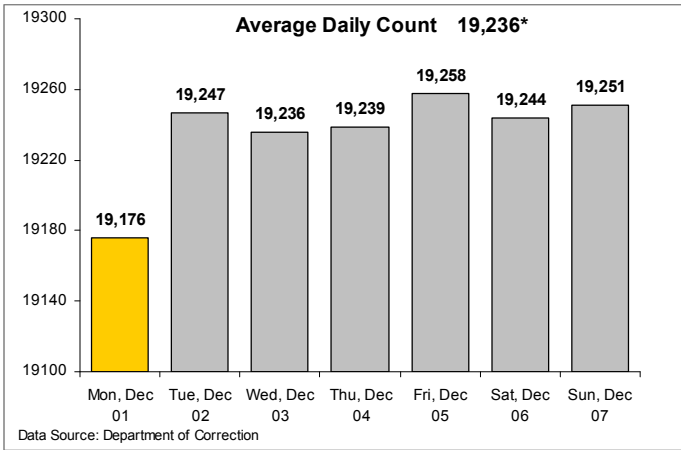
**Pre-trial Diversion Supervision**

**Total number of offenders released to Pre-trial Diversion/Supervision: 2,377 inmates were released to pre-trial diversion in November. This figure includes offenders who were released from DOC facilities.**

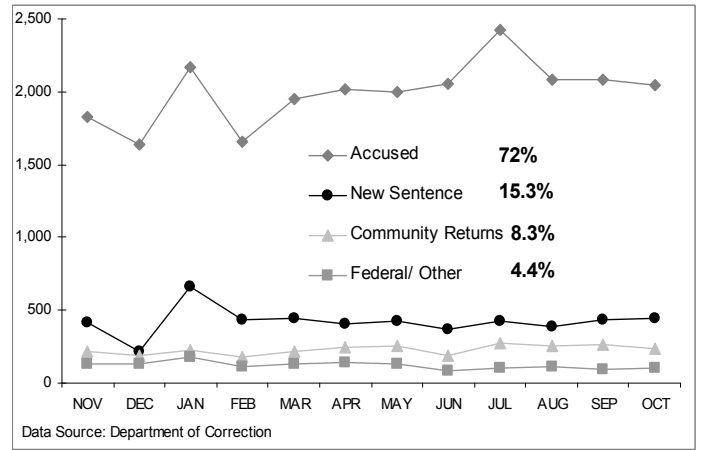
TABLE 6 – Pre-trial Diversion/Supervision

SEP	2,719
OCT	2,855
NOV	2,377

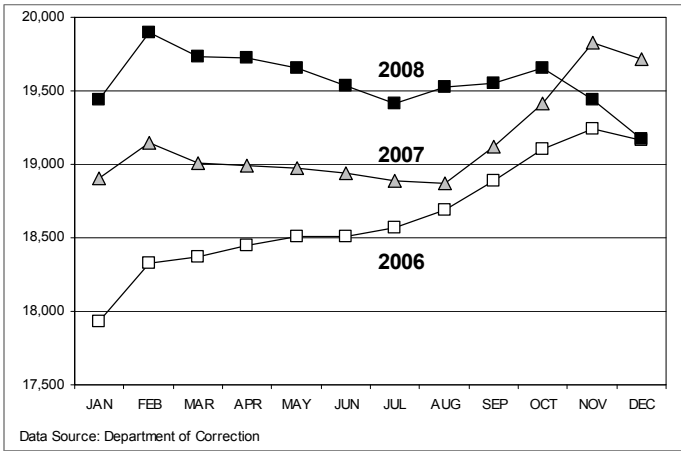
**CHART 3 – Daily DOC Facility Population**



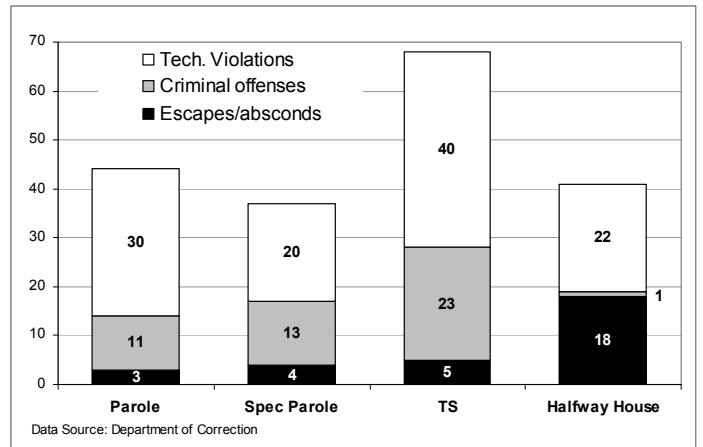
**CHART 6 – Monthly DOC Admissions by Type**



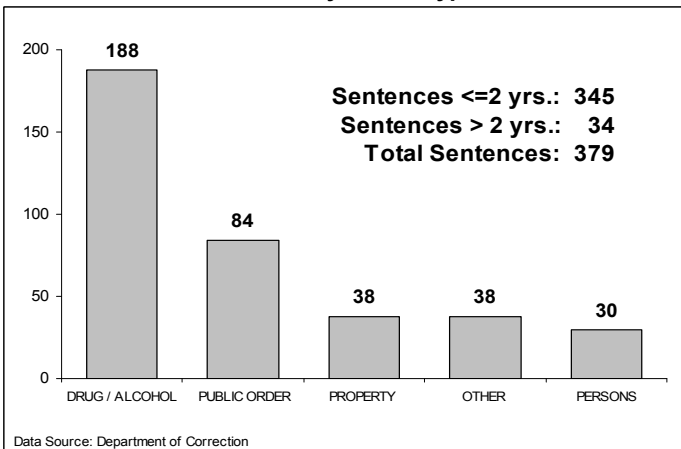
**CHART 4 – Monthly DOC Prison Population 2006, 2007 and 2008**



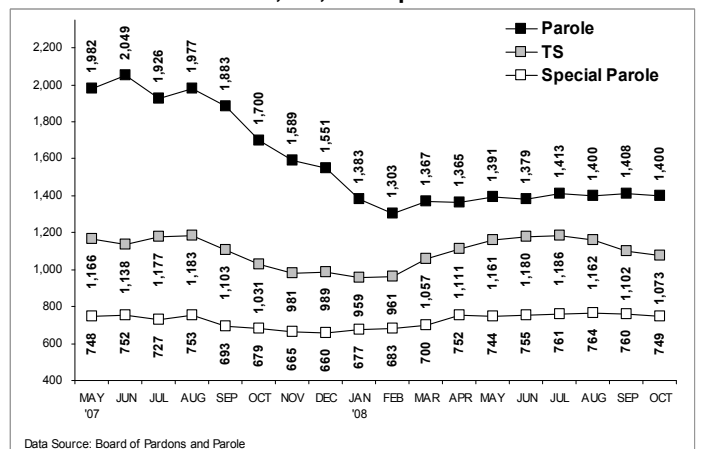
**CHART 7– Reason for Readmission from Community Release: November 2008**



**CHART 5 – Inmates admitted with New Sentences in November by Crime Type**



**CHART 8 – Offenders in the Community Parole, TS, and Special Parole**



## Monthly Indicators - Year End Supplement

The following pages represent the *Monthly Indicators - Year End Supplement*. This includes 12-month data tables and a glossary of community supervision types in Connecticut.

**TABLE 7 – Types of Connecticut Community Supervision**

Who decides if released to community?	Types of Release	Defintion
<b>Department of Corrections (DOC)</b>  <i>Supervised by DOC Parole Officers</i>	<b>Transitional Supervision (TS)</b>	Inmates with sentences of two years or less are eligible to be released on TS after serving 50% of their sentence. The DOC provides supervision and case management through its Parole and Community Services Unit for offenders on TS status.
	<b>Halfway House (HWH)</b>	Inmates can become eligible to live in a halfway house if they have been voted to parole or are within 18 months of their release date. Halfway houses provide offenders with structured programs and supervision to help them obtain employment, housing, education, or residential substance abuse treatment.
	<b>Furlough</b>	The authority to place offenders on 30 day re-entry furloughs has been revoked by statute with the following exceptions: to visit a dying relative or to a relative's funeral; to receive medical services not otherwise available; or for an employment opportunity or job interview.
	<b>Transitional Placement</b>	After a successful term in a halfway house, inmates can be transferred to an approved community placement or private residence.
<b>Board of Pardons and Parole (BOPP)</b>  <i>Supervised by DOC Parole Officers</i>	<b>Parole</b>	Inmates serving sentences greater than two years may be eligible for parole. Offenders convicted of non-violent crimes can become eligible after serving 50% of their sentences and offenders convicted of violent crimes can become eligible after serving 85% of their sentences. The parolee must comply with the imposed conditions of parole; violators may be remanded to prison.
	<b>Transfer Parole</b>	An offender can be released to transfer parole 18 months prior to his or her voted to parole date. Offenders on transfer parole are placed under the same or, in some cases, stricter supervision conditions than offenders on parole.
	<b>Special Parole</b>	Special parole is a mandatory, court-imposed period of parole following the completion of a sentence. If an inmate violates special parole, he or she may be remanded to prison for the remainder of the sentence. In general, special parole is reserved for high-risk offenders.
<b>Judicial Branch's Court Support Services Division (CSSD) / Courts</b>  <i>Supervised by CSSD Probation Officers</i>	<b>Probation</b>	Probation is a mandatory, court-imposed period of probation that allows a defendant to forego incarceration. Instead, the offender is subject to specific conditions of supervision (paying a fine, doing community service, attending a drug treatment program, etc.).
	<b>Split Sentence Probation</b>	A mandatory, court-imposed period of period of supervision following DOC sentence completion. If an offender violates split sentence probation, her or she may be remanded to court.

# Monthly Indicators - Year End Supplement

The level of new admissions fell dramatically in November 2007, strongly contributing to the decline in the total prison population.

**TABLE 8 – Monthly DOC Admissions by Type**

	December 2007 to November 2008				
	New Accused	New Sentence	Community Returns	Federal/Other	Total
DEC	1,635	221	186	129	2,171
JAN	2,164	664	231	176	3,235
FEB	1,660	431	181	113	2,385
MAR	1,949	443	222	134	2,748
APR	2,020	411	243	138	2,812
MAY	1,994	429	259	134	2,816
JUN	2,054	371	194	89	2,708
JUL	2,420	430	274	100	3,224
AUG	2,080	385	254	109	2,828
SEP	2,085	438	265	95	2,883
OCT	2,041	449	239	106	2,835
NOV	1,600	341	191	86	2,218
<b>Total</b>	<b>23,702</b>	<b>5,013</b>	<b>2,739</b>	<b>1,409</b>	<b>32,863</b>
<b>Avg</b>	<b>1,975</b>	<b>418</b>	<b>228</b>	<b>117</b>	<b>2,739</b>

Re-admissions to prison from DOC Community Supervision declined in November.

**TABLE 9 – Monthly Prison Re-Admissions From DOC Community Supervision**

	December 2007 to November 2008						
	Parole	Trans Parole	Spec Parole	TS	HWH	Furlgh TrnsPlmt	Total
DEC	45	0	23	82	33	3	186
JAN	61	0	46	85	36	3	231
FEB	41	2	32	61	45	0	181
MAR	37	3	35	100	47	0	222
APR	67	0	45	91	39	1	243
MAY	55	3	41	108	51	1	259
JUN	47	1	34	74	37	1	194
JUL	69	1	38	105	60	1	274
AUG	50	4	44	111	45	0	254
SEP	68	2	47	95	52	1	265
OCT	51	0	42	94	52	0	239
NOV	44	0	37	68	41	1	191
<b>Total</b>	<b>635</b>	<b>16</b>	<b>464</b>	<b>1,074</b>	<b>538</b>	<b>12</b>	<b>2,739</b>
<b>Avg</b>	<b>53</b>	<b>1</b>	<b>39</b>	<b>90</b>	<b>45</b>	<b>1</b>	<b>228</b>

One additional inmate was returned from Transitional Placement.

In November, 191 offenders in DOC community release programs were returned to prison. Most were returned for violating the conditions of their release. Slightly more than 25% of returning offenders were charged with a new criminal offense.

**TABLE 10 – Basis for Return From DOC Community Supervision**

	November 2008					
	Spec Parole	Spec Parole	TS	HWH	Furlgh / TP	Total
Absconder	3	4	0	0	0	7
Criminal Offense	11	13	23	1	0	48
Escape	0	0	5	18	0	23
Tech Violation	30	20	40	22	1	113
<b>Total</b>	<b>44</b>	<b>37</b>	<b>68</b>	<b>41</b>	<b>1</b>	<b>191</b>

Data Note: Cannot Escape from Parole, any entries moved to Abscond.

**TABLE 11 – Returns from DOC Community Supervision with Technical Violations**

	December 2007 to November 2008					
	HWH	Parole	Furlgh / TP	Spec Parole	TS	Total
DEC	18	20	-	13	56	107
JAN	19	29	-	28	59	135
FEB	25	24	-	16	46	111
MAR	21	19	-	20	69	129
APR	26	33	-	26	63	148
MAY	28	29	1	29	71	158
JUN	22	26	1	25	49	123
JUL	30	45	-	21	62	158
AUG	25	31	-	29	74	159
SEP	23	40	1	30	70	164
OCT	27	31	-	19	53	130
NOV	22	30	1	20	40	113
<b>Total</b>	<b>286</b>	<b>357</b>	<b>4</b>	<b>276</b>	<b>712</b>	<b>1,635</b>
<b>Avg</b>	<b>24</b>	<b>30</b>	<b>0</b>	<b>23</b>	<b>59</b>	<b>136</b>

The number of offenders entering prison with new sentence for Violation of Probation (VOP) varies considerably from month to month. Generally, VOP sentences account for about a quarter of all new prison sentences.

**TABLE 12 – Inmates Re-Admitted with New Prison Sentences including Violation of Probation**

	November 2008				
	<=2 YR	> 2 YR	VOP TOTAL	NEW SENTENCE	VOP, % of TOT
DEC	39	9	48	221	22%
JAN	126	29	155	664	23%
FEB	74	13	87	431	20%
MAR	88	12	100	443	23%
APR	78	14	92	411	22%
MAY	88	17	105	429	24%
JUN	66	18	84	371	23%
JUL	104	13	117	430	27%
AUG	91	18	109	385	28%
SEP	89	26	115	438	26%
OCT	105	28	133	449	30%
NOV	72	18	90	341	26%
<b>Total</b>	<b>1,020</b>	<b>215</b>	<b>1,235</b>	<b>5,013</b>	
<b>Avg</b>	<b>85</b>	<b>18</b>	<b>103</b>	<b>418</b>	<b>25%</b>

**TABLE 13 – Monthly CSSD Direct Sentenced and Probationer Community Placements**

	November 2007 to October 2008			
	Community-Based	Outpatient	Inpatient/ Residential	Total
NOV	1,209	611	45	1,865
DEC	1,014	544	32	1,590
JAN	1,284	807	41	2,132
FEB	974	748	36	1,758
MAR	970	721	53	1,744
APR	1,212	780	44	2,036
MAY	1,224	776	32	2,032
JUN	1,175	692	30	1,897
JUL	1,766	666	36	2,468
AUG	1,091	712	39	1,842
SEP	1,077	802	43	1,922
OCT	1,089	754	30	1,873
<b>Total</b>	<b>14,085</b>	<b>8,613</b>	<b>461</b>	<b>23,159</b>
<b>Avg</b>	<b>1,174</b>	<b>718</b>	<b>38</b>	<b>1,930</b>

Data Notes: November 2008 data was not available at the time of this report. These numbers are merely estimates based on data available at the time of this report. Subsequent reports of actual figures may not agree.

# Monthly Indicators - Year End Supplement

Between December 2007 and November 2008, 20,506 inmates were released from DOC Facilities. Almost 60% of released inmates completed their prison sentences; 40% were released to some form of community supervision.

**TABLE 14 – Monthly DOC Releases by Type**  
*December 2007 to November 2008*

	EOS	HWH	Parole	Furlough	Place	Trans Spec Parole	Trans Parole	TS	Total	NonEOS
DEC	944	107	67	157	0	42	9	171	1,497	553
JAN	965	161	105	131	0	65	5	214	1,646	681
FEB	940	155	124	0	0	61	2	335	1,617	677
MAR	975	161	124	0	1	88	2	346	1,697	722
APR	1,020	170	151	0	0	66	12	383	1,802	782
MAY	1,097	218	109	0	0	50	6	376	1,856	759
JUN	1,002	141	135	0	0	45	5	337	1,665	663
JUL	1,107	218	137	0	0	63	11	363	1,899	792
AUG	1,027	162	133	0	0	45	15	312	1,694	667
SEP	966	165	132	0	0	52	12	302	1,629	663
OCT	1,128	188	136	0	1	68	8	349	1,878	750
NOV	953	158	119	0	4	72	17	303	1,626	673
<b>Total</b>	<b>12,124</b>	<b>2,004</b>	<b>1,472</b>	<b>288</b>	<b>6</b>	<b>717</b>	<b>104</b>	<b>3,791</b>	<b>20,506</b>	<b>8,382</b>
<b>Avg</b>	<b>1,010</b>	<b>167</b>	<b>123</b>	<b>24</b>	<b>1</b>	<b>60</b>	<b>9</b>	<b>316</b>	<b>1,709</b>	<b>699</b>

**TABLE 15 – Monthly Parole Granting Rate**  
*December 2007 to November 2008*

	Full Panel Hearings			Admin Reviews	
	Hearings	Granted	Rate	Granted	Rate
DEC	0	0	*	160	82%
JAN	0	0	*	136	80%
FEB	0	0	*	0	0%
MAR	39	31	79%	205	86%
APR	45	37	82%	128	84%
MAY	69	50	72%	203	79%
JUN	91	61	67%	225	71%
JUL	197	144	73%	0	*
AUG	241	184	76%	0	*
SEP	286	221	77%	0	*
OCT	262	218	83%	0	*
NOV	255	217	85%	0	*
<b>Total</b>	<b>1,485</b>	<b>1,163</b>		<b>1,057</b>	
<b>Avg</b>	<b>165</b>	<b>129</b>	<b>77%</b>	<b>151</b>	<b>69%</b>

**TABLE 16 – Monthly Transfer Paroles Granted**  
*December 2007 to November 2008*

	Reviewed	Approved	Denied	Continued	Rate
DEC	68	20	44	4	29.4%
JAN	19	6	13	0	31.6%
FEB	17	9	7	1	52.9%
MAR	63	44	16	3	69.8%
APR	36	14	19	3	38.9%
MAY	60	27	11	22	45.0%
JUN	66	18	27	21	27.3%
JUL	90	27	38	25	30.0%
AUG	82	21	28	33	25.6%
SEP	81	23	49	9	28.4%
OCT	135	25	74	36	18.5%
NOV	177	44	67	66	24.9%
<b>Total</b>	<b>894</b>	<b>278</b>	<b>393</b>	<b>223</b>	
<b>Avg</b>	<b>75</b>	<b>23</b>	<b>33</b>	<b>19</b>	<b>35.2%</b>

The age distribution of inmates in Connecticut prisons has remained relatively constant over the past year. On December 1, 2008, almost 13% of inmates were under the age of twenty-two. Almost 30% of inmates were age 40 or older.

**TABLE 17 – Prison Population by Age**  
*December 1<sup>st</sup> Snapshot*

	<16	16-17	18-21	22-29	30-39	>40	Total
2008	27	319	2,096	5,721	5,473	5,540	19,176
2007	21	377	2,172	5,973	5,594	5,577	19,714
2008, %	0.1%	1.7%	10.9%	29.8%	28.5%	28.9%	100%
2007, %	0.1%	1.9%	11.0%	30.3%	28.4%	28.3%	100%

On December 1 2008, 43% of inmates incarcerated in DOC facilities identified themselves as black. Approximately 30% of inmates were white and 27% were Hispanic. The racial and ethnic distribution of inmates in Connecticut prisons in 2008 remained relatively unchanged from the distribution a year earlier.

**TABLE 18 – Prison Population by Race/Ethnicity**  
*December 1<sup>st</sup> Snapshot*

	African-American	White	Hispanic	Other	Total	% Total
<b>Females</b>						
2008	412	608	240	11	1,271	7%
2007	458	613	290	11	1,372	7%
2008, %	32%	48%	19%	1%	100%	
2007, %	33%	45%	21%	1%	100%	
<b>Males</b>						
2008	7,854	5,052	4,893	106	17,905	93%
2007	7,941	5,288	4,998	115	18,342	93%
2008, %	44%	28%	27%	1%	100%	
2007, %	43%	29%	27%	1%	100%	
<b>Total</b>						
2008	8,266	5,660	5,133	117	19,176	
2007	8,399	5,901	5,288	126	19,714	
2008, %	43.1%	29.5%	26.8%	0.6%	100.0%	
2007, %	42.6%	29.9%	26.8%	0.6%	100.0%	

## Monthly Indicators - Year End Supplement

**TABLE 19 – Connecticut Total DOC Supervised Population Trends for the Ten Year Period: 1999 to 2008**

	Year	Parole	% Chg	TS	% Chg	HWH	% Chg	Furlough	% Chg	Total Com. Supv.	% Chg	Total Facility	% Chg	Total DOC Supv. Pop.	% Chg
1	1999	1,099	5%	896	-23%	712	21%	34	-3%	2,741	-3%	16,104	4%	18,845	2%
2	2000	1,381	26%	717	-20%	749	5%	25	-26%	2,872	5%	17,305	7%	20,177	7%
3	2001	1,722	25%	633	-12%	738	-1%	27	8%	3,120	9%	17,137	-1%	20,257	0%
4	2002	2,019	17%	705	11%	735	0%	26	-4%	3,485	12%	17,997	5%	21,482	6%
5	2003	2,199	9%	1,012	44%	759	3%	44	69%	4,014	15%	19,216	7%	23,230	8%
6	2004	2,343	7%	1,060	5%	680	-10%	47	7%	4,130	3%	18,522	-4%	22,652	-2%
7	2005	2,552	9%	1,005	-5%	798	17%	137	191%	4,492	9%	18,001	-3%	22,493	-1%
8	2006	2,571	1%	863	-14%	1,048	31%	139	1%	4,621	3%	17,928	0%	22,549	0%
9	2007	2,567	0%	984	14%	1,022	-2%	197	42%	4,770	3%	18,902	5%	23,672	5%
10	2008	1,981	-23%	871	-11%	1,086	6%	97	-51%	4,035	-15%	19,438	3%	23,473	-1%
	<b>Avg</b>	<b>2,043</b>		<b>875</b>		<b>833</b>		<b>77</b>		<b>3,828</b>		<b>18,055</b>		<b>21,883</b>	

Total % Growth for 10year period	80.3%	-2.8%	52.5%	185.3%	47.2%	20.7%	24.6%
-------------------------------------	-------	-------	-------	--------	-------	-------	-------

*Data Note: The yearly figures above represent the DOC population counts as of the first day of January each year*