

OFFICE OF POLICY & MANAGEMENT

# Criminal Justice

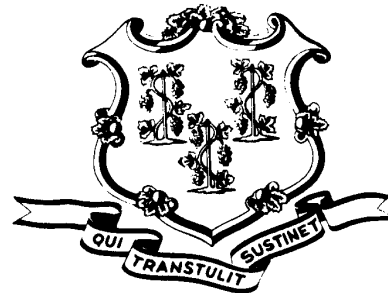
Policy & Planning Division



## ***Raising the Age: Connecticut's Experience and Outcomes***

Mike Lawlor

Undersecretary for Criminal Justice Policy and Planning



Presented

**2016 Michigan School Justice Partnership Statewide Forum  
November 2, 2016**

# **Major reforms in CT**

---

**1995 -- Major Juvenile Justice Reform Enacted Following Spike in Crime**

**1997 – Federal Court Consent Decree Regarding Conditions of Confinement in Juvenile Training School**

**1998 – Creation of “Family Support Centers” for Status Offenders**

**1999 – Consolidation of Juvenile Detention and Probation into new Judicial Branch Agency**

**2001 – Opening of Connecticut Juvenile Training School**

**2002 – Allegations of Abuse at CJTS**

**2005 – Scandal regarding Construction of CJTS Leads to Impeachment Hearings, Resignation and Incarceration of Governor**

# Major reforms in CT

---

**2005 – Law enacted Banning Detention of Status Offenders Effective in 2007**

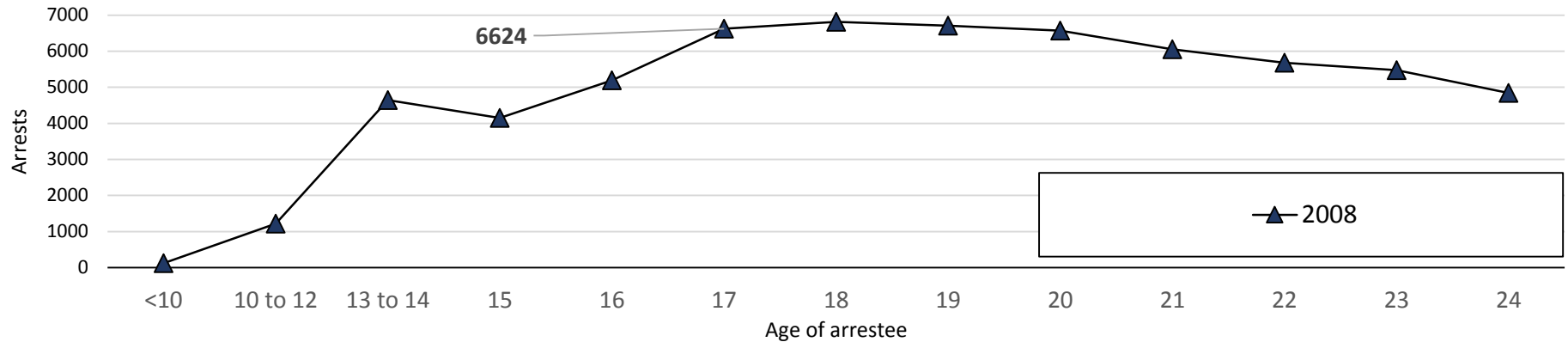
**2006 – Legislature Begins Planning Process to Raise the Age of Juvenile Jurisdiction from 16 to 18**

**2007 – Final Report of Raising the Age Issued, Legislation Passes Effective January 1, 2010**

**2008 – State Fiscal Crisis Leads to Call to Delay Raise the Age Due to Projected Cost**

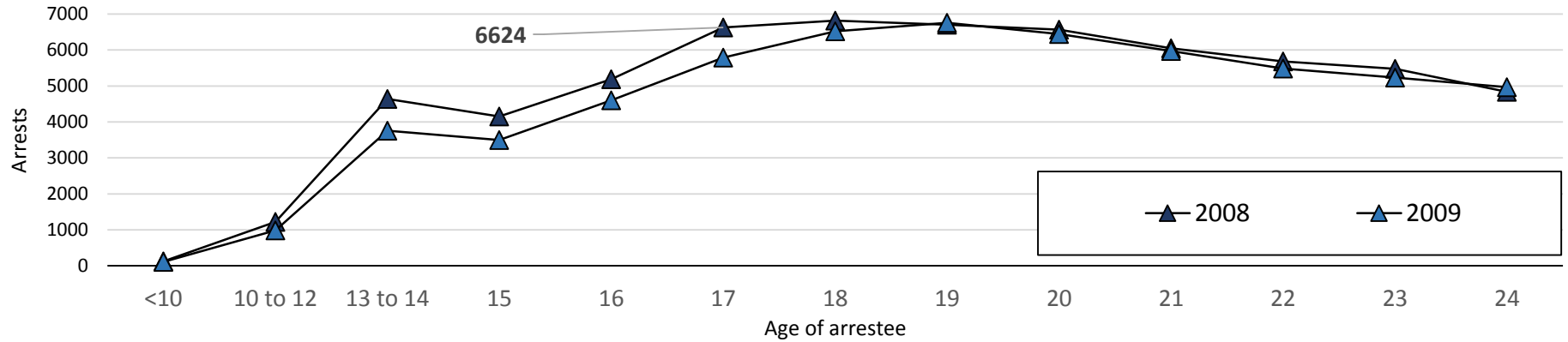
**2009 – Governor Proposes Two Year Delay; Legislature Compromises. Add 16 yo in 2010, Delay 17 yo to July 1, 2012**

## Arrests by age – 2008 through 2014



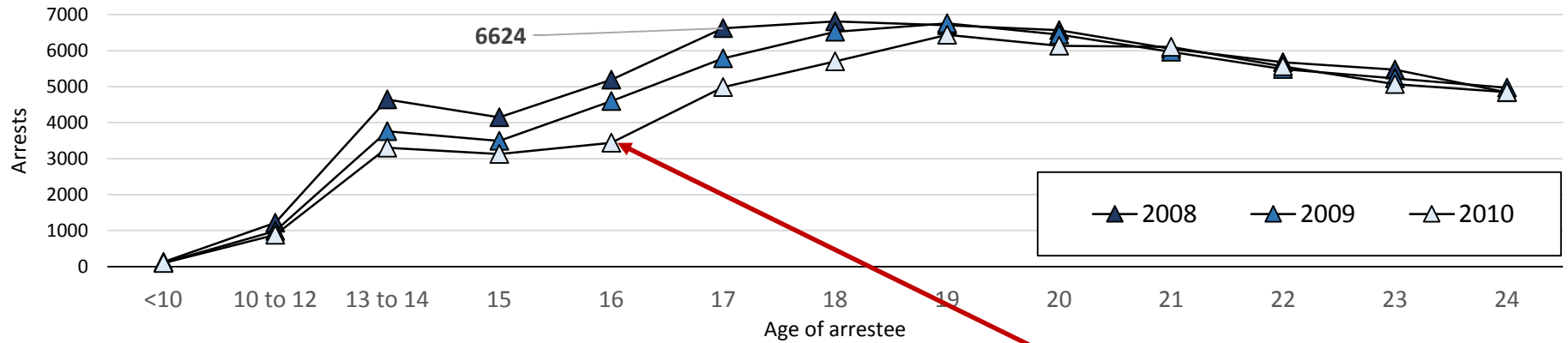
- **Statewide arrests (adult and juvenile) by age in 2008**
- **Source: Crime in Connecticut, annual reports by the CT State Police**
- **Most 15-year olds arrested in 2008 were born in 1993**

## Arrests by age



- **In 2009, arrests among youth under 18 were down significantly**

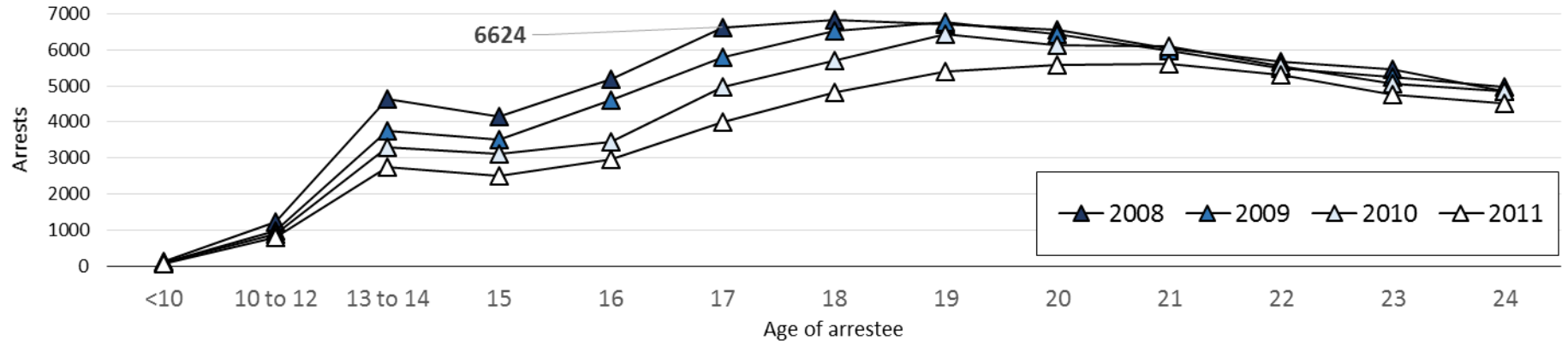
## Arrests by age



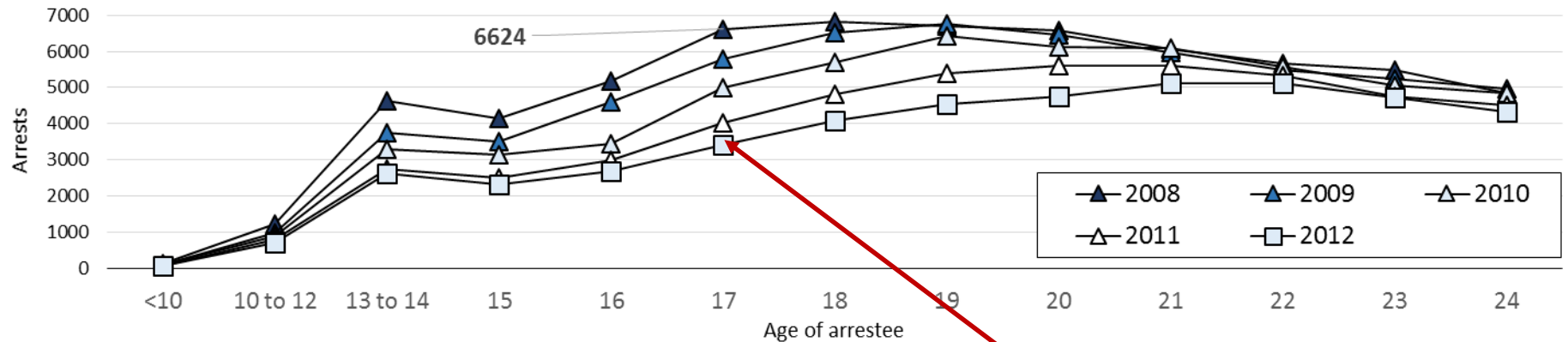
**Raise the age: 16 year olds January 1, 2010**

- In 2010, arrests kept declining particularly among 16-, 17- and 18-years olds.

# Arrests by age



## Arrests by age

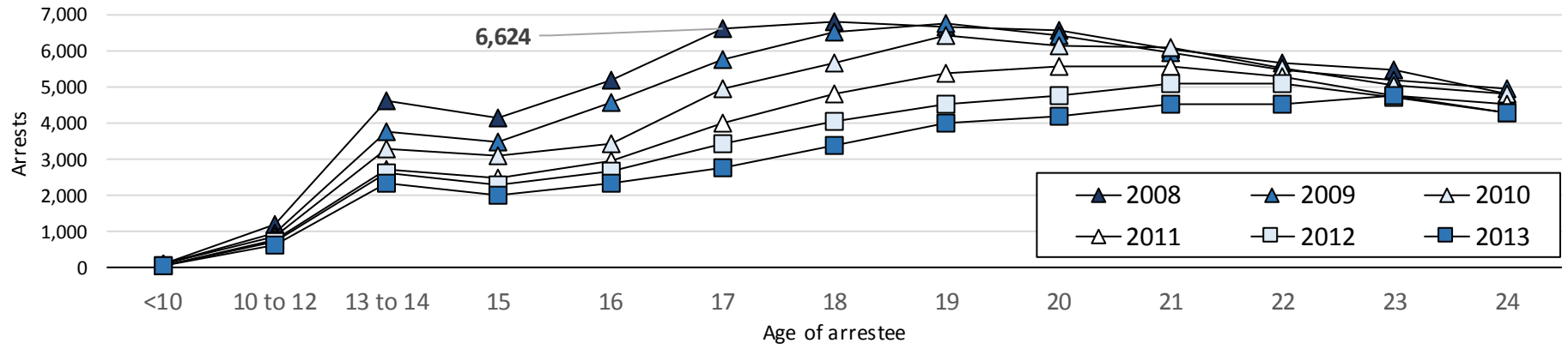


**Raise the age: 17-year olds July 1, 2012**

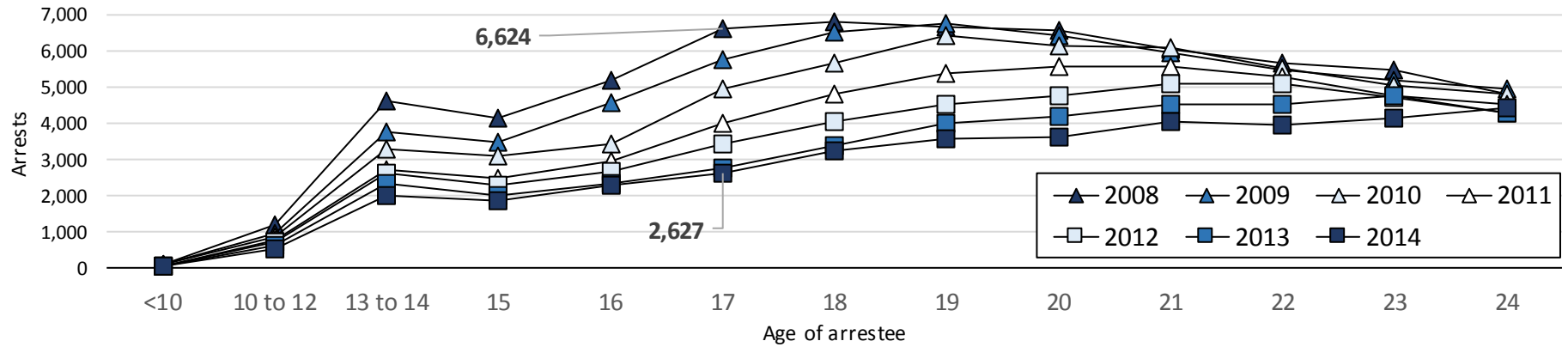
- **By 2012, arrests among youth aged 18-, 19- and 20-year old were down significantly**



# Arrests by age

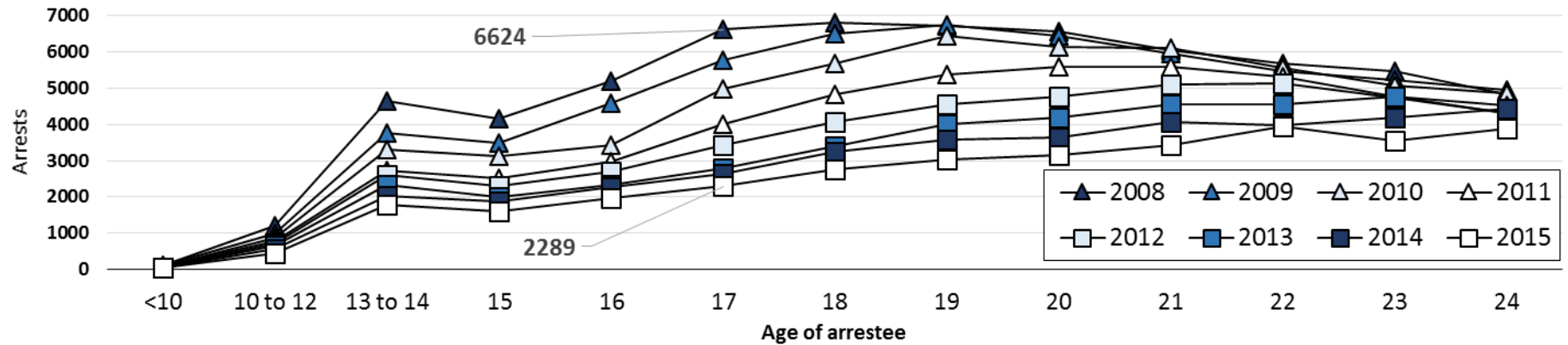


## Arrests by age



- **By 2014, the drop in arrests was edging towards older youth.**

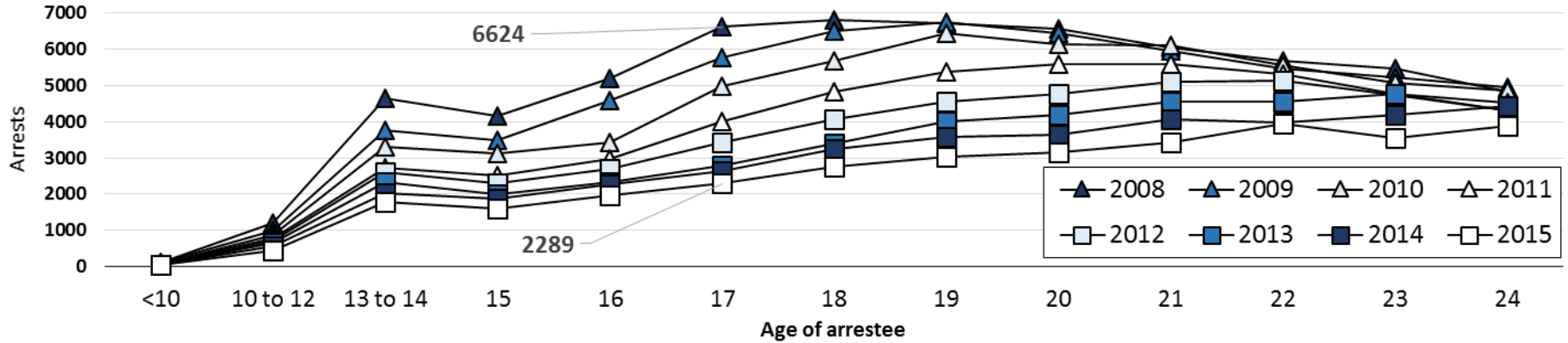
## Arrests by age



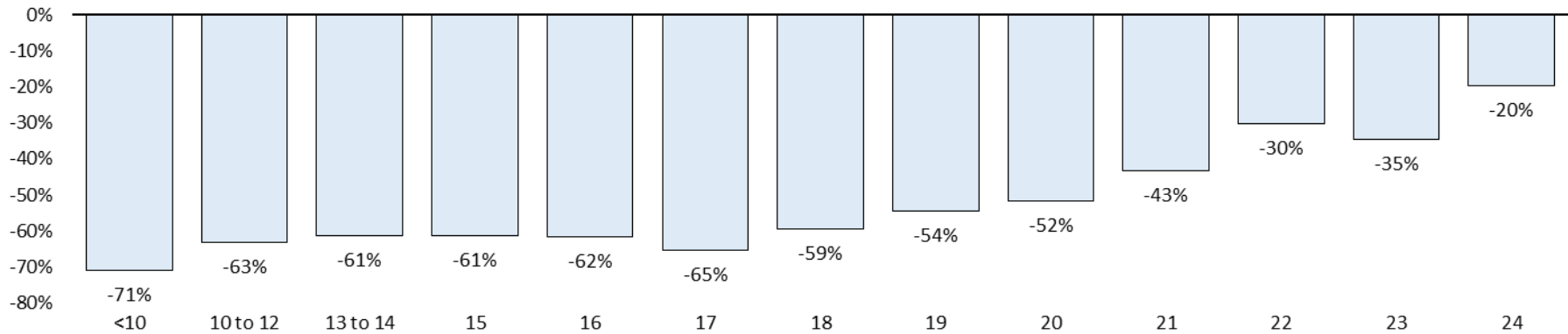
- **By 2014, the drop in arrests was edging towards older youth.**

# Arrests by age

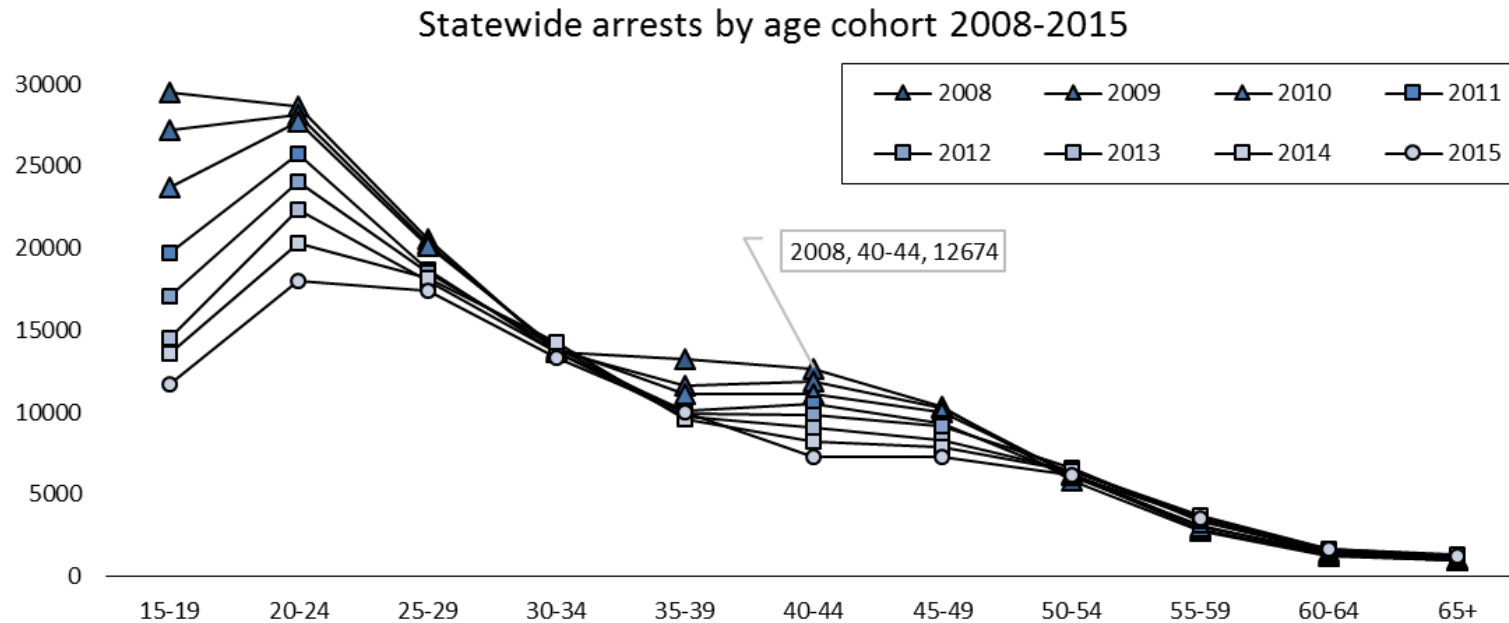
Change in statewide arrests by age 2008 to 2014



Percent change in statewide arrests by age 2008 to 2015



## Arrests by age, 15-19 through 65+

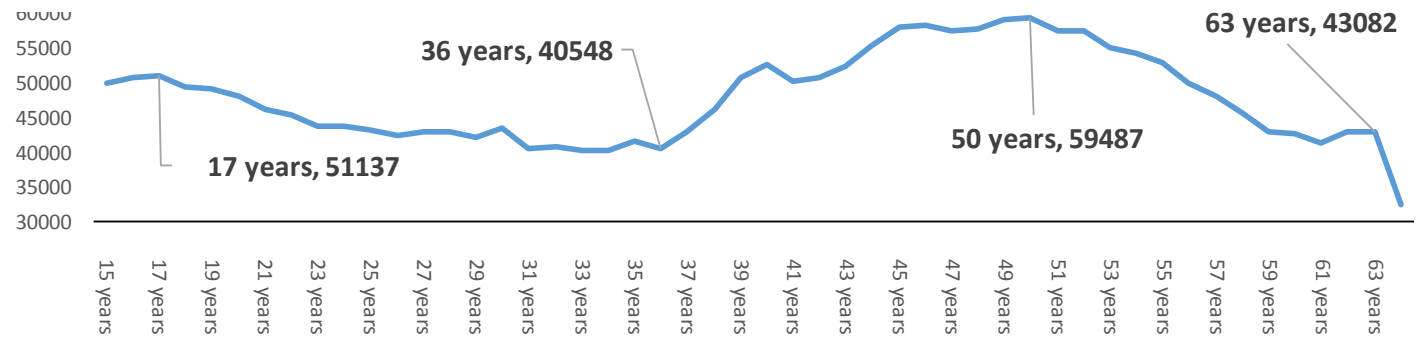
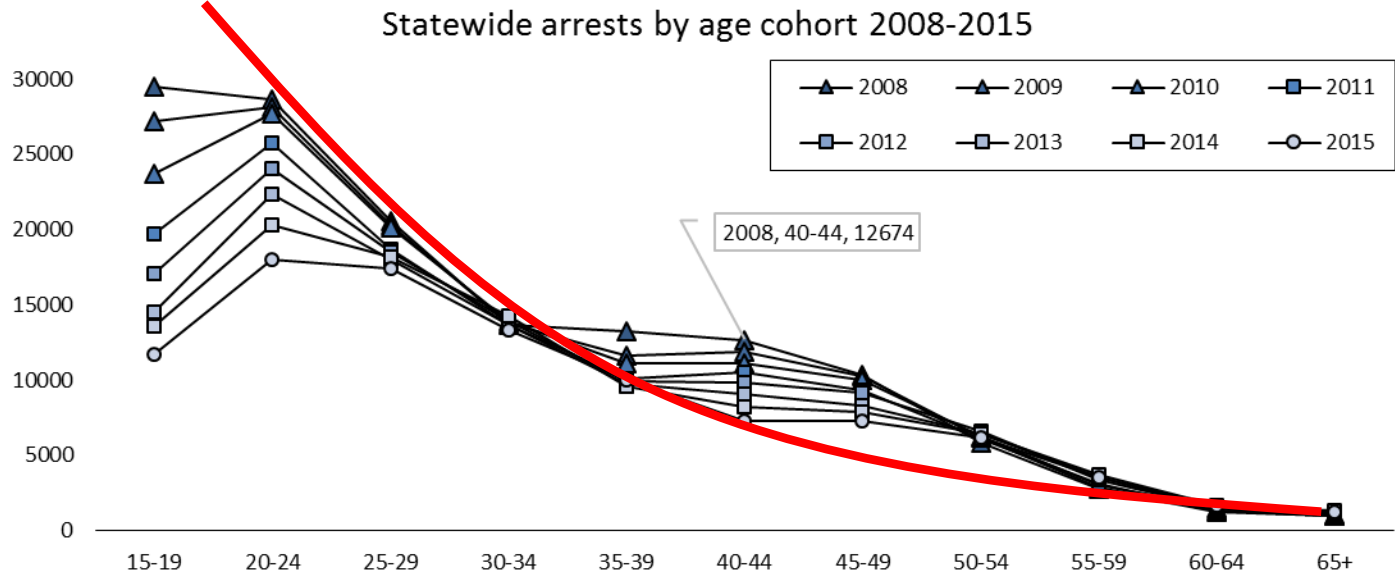


**We observed that arrests among younger, offender cohorts declined most. Older age cohorts, actually, grew.**

15-19	20-24	25-29	30-34	35-39	40-44	45-49	50-54	55-59	60-64	65+
-60%	-37%	-15%	-2%	-24%	-43%	-30%	6%	27%	31%	18%

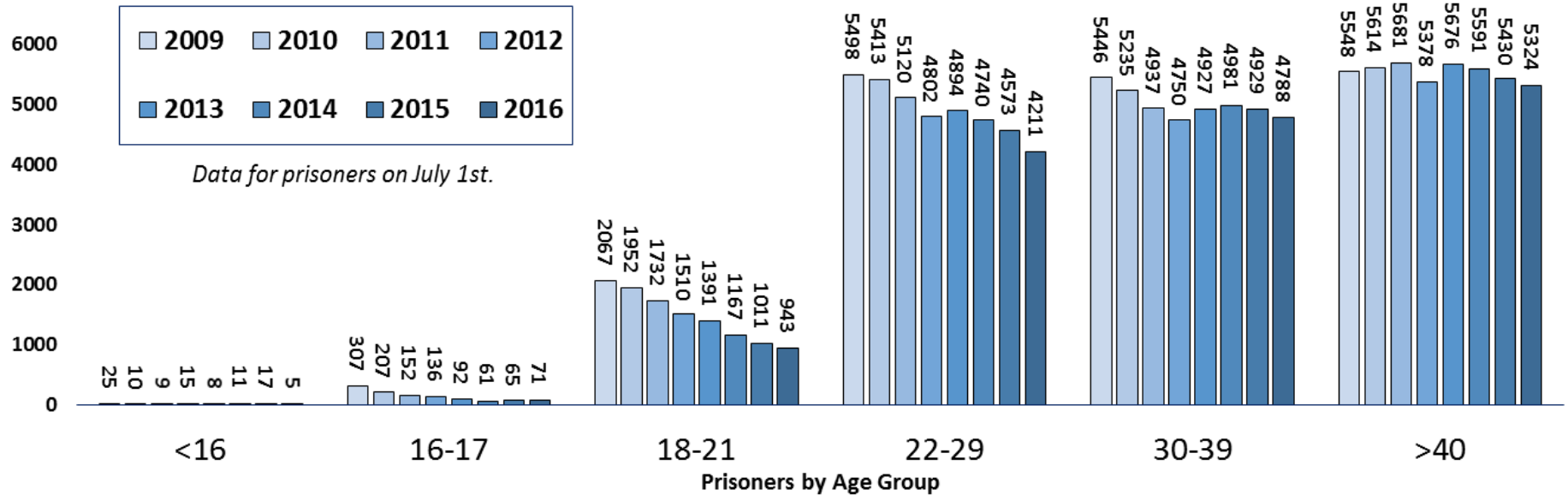
**.. and then we observed a spread among those aged 35 to 50.**

# Arrests by age, 15-19 through 65+



2010 Census data

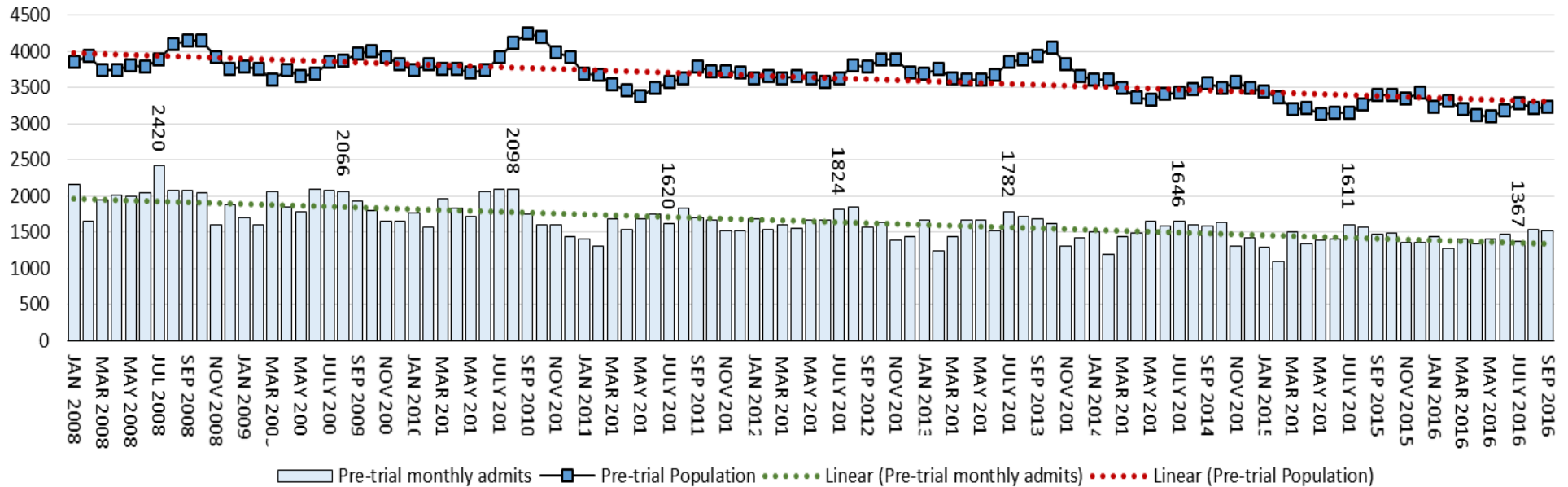
# CT DOC prisoners by age group



## Change in size of prison population by age group, July 1

Age	2009	2010	2011	2012	2013	2014	2015	2016	% change 2009 to 2016
<16	25	10	9	15	8	11	17	5	-80%
16-17	307	207	152	136	92	61	65	71	-77%
18-21	2067	1952	1732	1510	1391	1167	1011	943	-54%
22-29	5498	5413	5120	4802	4894	4740	4573	4211	-23%
30-39	5446	5235	4937	4750	4927	4981	4929	4788	-12%
>40	5548	5614	5681	5378	5676	5591	5430	5324	-4%
<b>Total</b>	<b>18891</b>	<b>18431</b>	<b>17631</b>	<b>16591</b>	<b>16988</b>	<b>16551</b>	<b>16025</b>	<b>15342</b>	<b>-19%</b>

## CT DOC: Monthly pre-trial admissions and pre-trial population

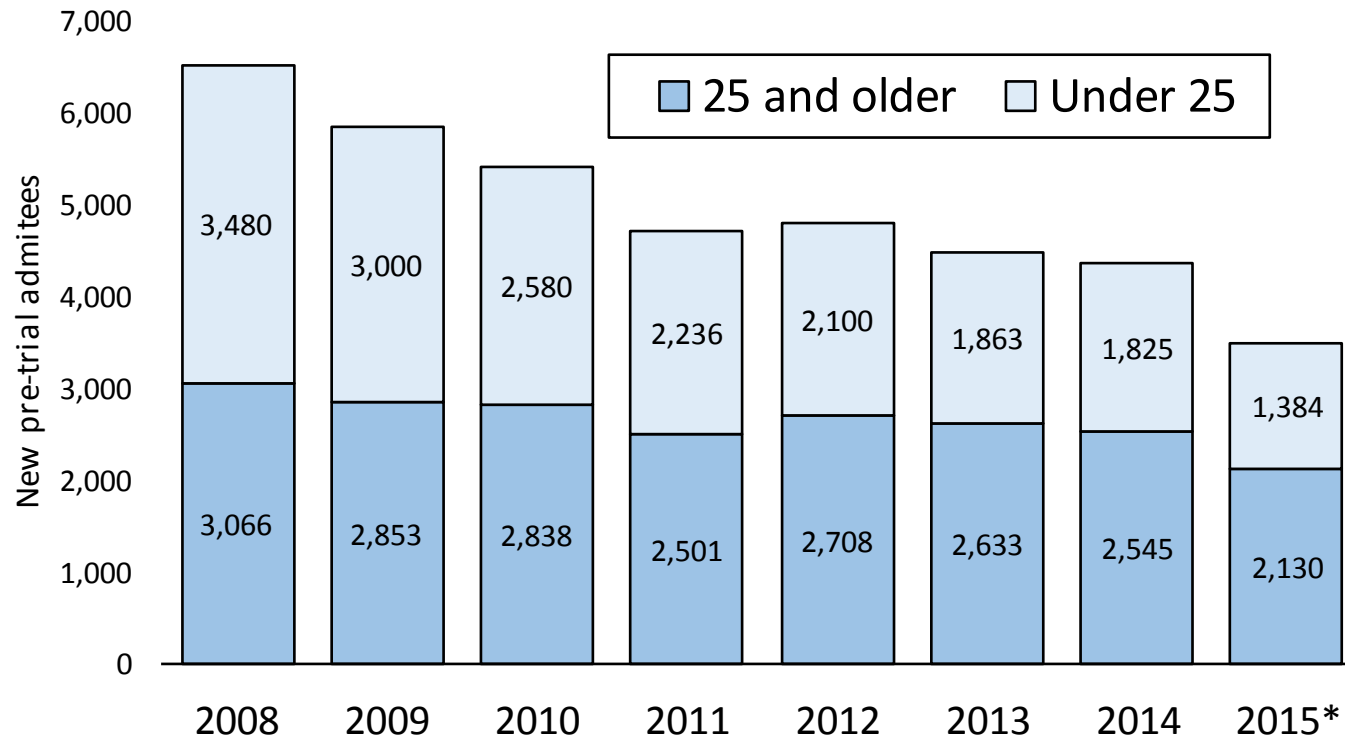


**Discounting seasonal variations, the pre-trial, prison population and the number of persons admitted to prison on a pre-trial basis has been declining steadily since 2008.**

**Of persons admitted to prison in pre-trial status each month only about 25% are new to the prison system.**



## New persons admitted to the CT DOC on pre-trial status



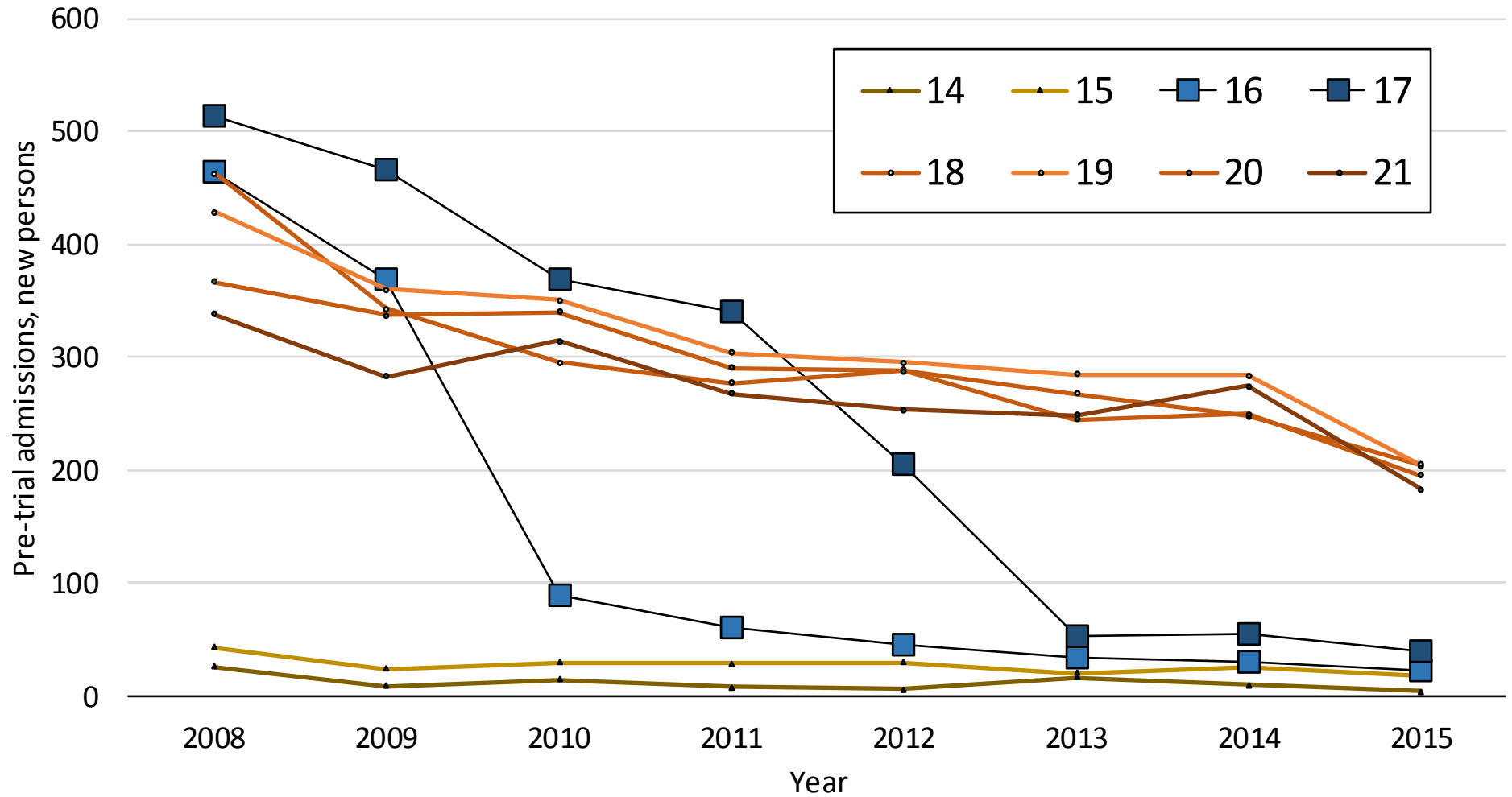
**Percent change in the number of new persons admitted to DOC on pre-trial status, 2008 to 2014:**

**All persons: -33% (6,546 to 4,370)**

**Persons under 25: -48% (3,480 to 1,825)**

**Persons 25 and older: -17% (3,066 to 2,545)**

# New persons admitted to the CT DOC on pre-trial status by age at admit



OFFICE OF POLICY & MANAGEMENT

# Criminal Justice

Policy & Planning Division



**Presented by:**

**Mike Lawlor**

**Criminal Justice Policy & Planning Division  
CT OPM**