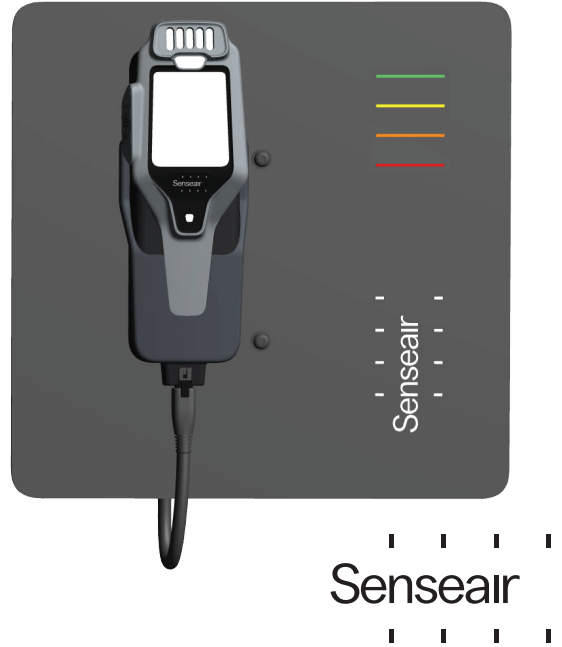


Installation manual
Senseair
Workplace
Alcohol screening

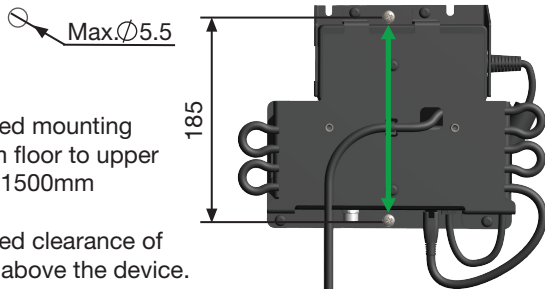


1

Wall

Recommended mounting distance from floor to upper screw: 1400-1500mm

Recommended clearance of min. 200mm above the device.



[mm]

Pos. 1



x2

*Not included

Alternative mounting positions

Pos. 2

Pos. 3

Pos. 4

Table

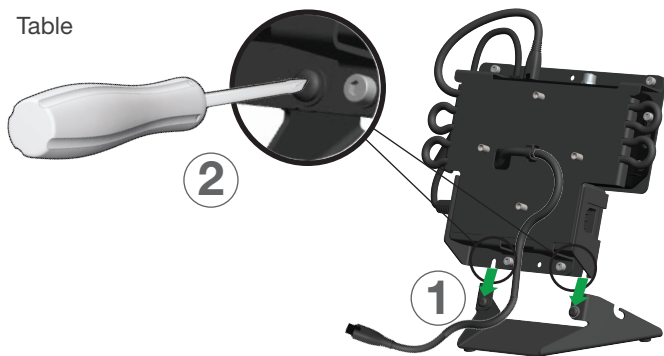
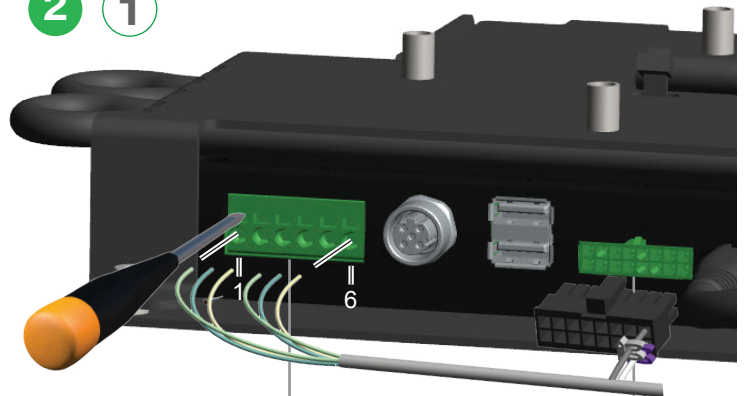


Table stand: part No.: 426-00211

2 1

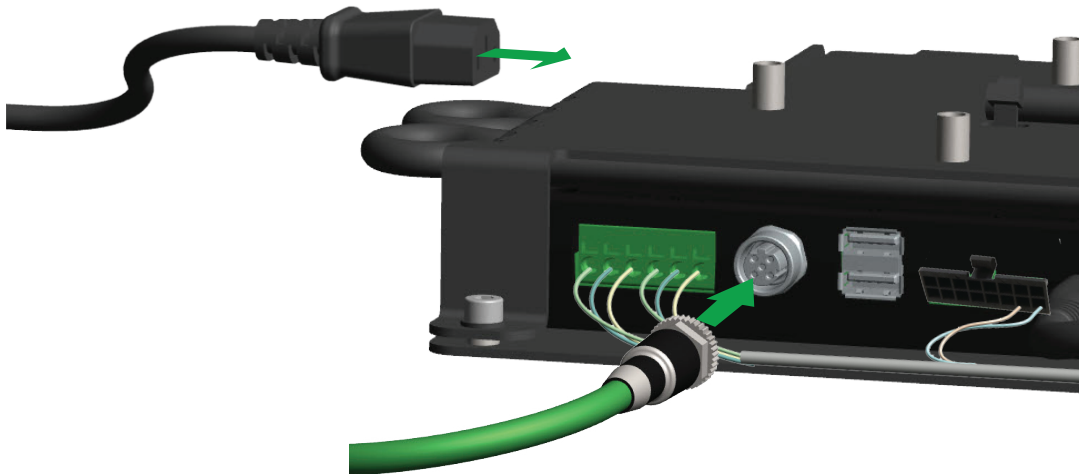


Pin	Name	Feature
1	Relay 1	Closed at negative test
2		
3	Relay 2	Closed at negative test
4		
5	Relay 3	Closed at positive test
6		

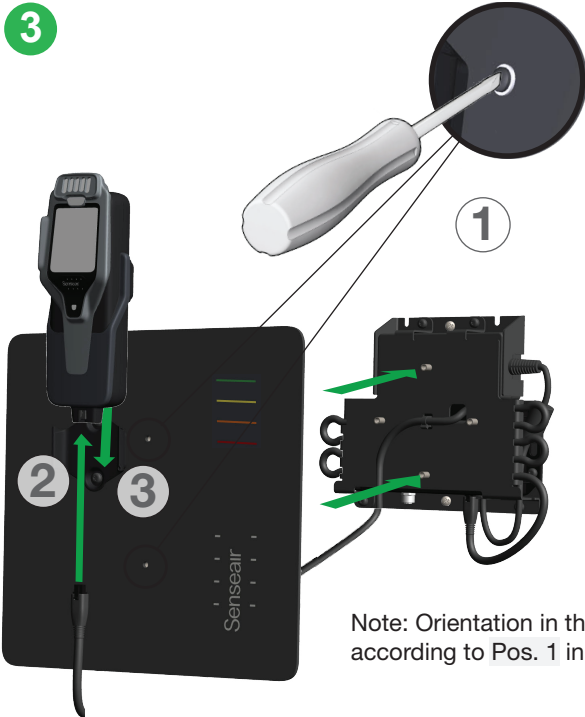
Pin	Name	Spec.	Feature
1	Input	5V	Start test
2-8			Not used
9	GND	0V	
10-16			Not used

Signal cable: part No.: 840-00028 Max 2A, 24V

2 2



Ethernet cable: part No.: 115-00029



Note: Orientation in this example according to Pos. 1 in step 1

4 Connect to power source

! Grounded outlet power source

! Keep transmitting electronic devices, e.g. mobile phones away from the system, in order to minimise interference.



Visit senseair.com or use the QR code above for more product documentation.



Senseair AB (headquarter)
Stationsgatan 12, Box 96, 824 08 Delsbo, Sweden
Phone: +46-(0)653 – 71 77 70
www.senseair.com

©2023 Senseair AB. All rights reserved.