

Connecticut Department of Transportation

Safe Routes to School Program



Kristen Levesque • June 2023
Safe Routes to School Coordinator

Connecticut Department of Transportation •
Bureau of Policy and Planning •
Office of Strategic Planning and Projects •
Project Coordination Unit



SafeRoutes

Connecticut Safe Routes to School



Connecticut Department of Transportation

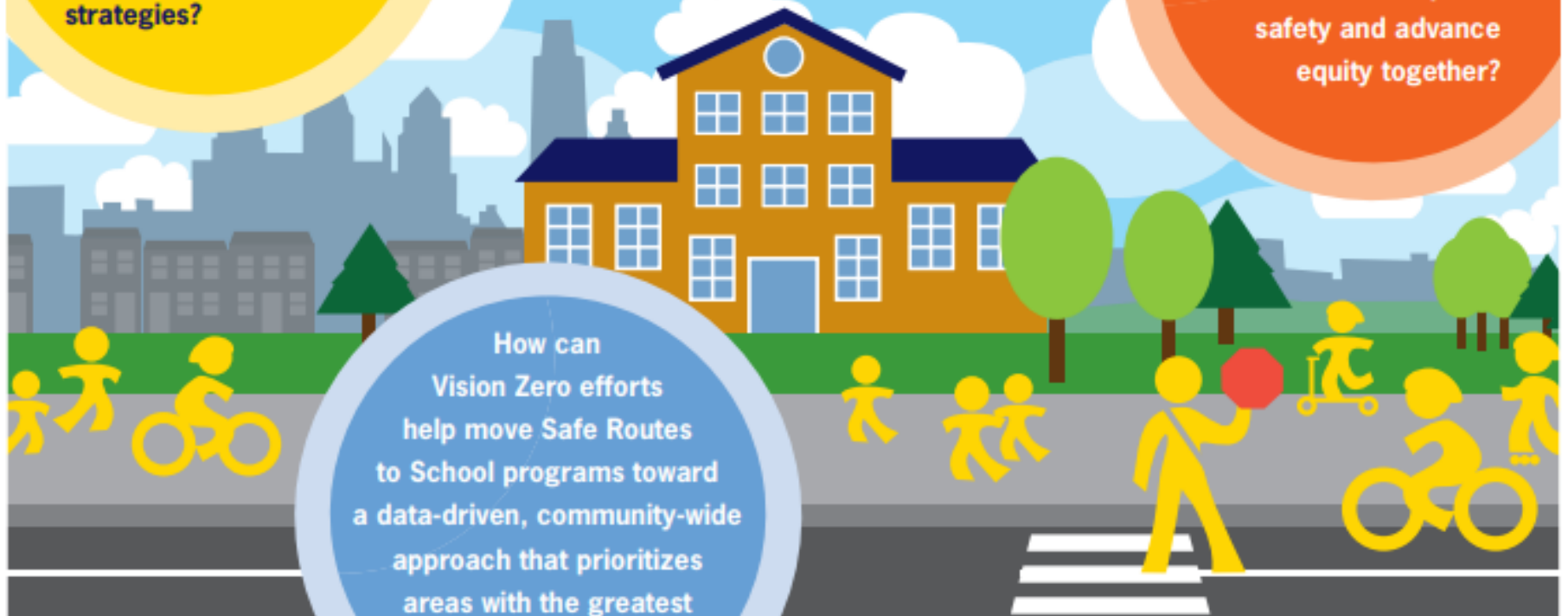
Vision Zero and Safe Routes to School: Partners in Safety

Why should Safe Routes to School and Vision Zero programs work together to amplify shared transportation safety goals and strategies?

Safe Routes to Schools focuses on making it safer for more kids to walk and bike to school. Vision Zero works to eliminate all traffic deaths and serious injuries.

What opportunities are there for Safe Routes to School and Vision Zero advocates to collaborate to improve safety and advance equity together?

How can Vision Zero efforts help move Safe Routes to School programs toward a data-driven, community-wide approach that prioritizes areas with the greatest safety needs?



Advancing Safe Routes to School Through Vision Zero



Project Status

- **BACKGROUND**
 - Purpose and Need
 - Framework (6 E's)
 - Legislation
- **PROGRAMS AND PROJECTS**
 - **Programs**
 - Equity
 - Education
 - Encouragement
 - **Projects**
 - Evaluation
 - Enforcement
 - Engineering
- **ALIGNMENT WITH VISION ZERO**

Purpose

The purpose of Safe Routes to School as established in 2005 and revised in 2021 in accordance with the Federal Infrastructure Investment and Jobs Act is:



*Photo Credit:
CT DOT – South
Windsor CT*

Safety:

to make bicycling and walking to school a safer and more appealing transportation alternative, thereby encouraging a healthy and active lifestyle from an early age

Accessibility:

to enable and encourage all children, including those with disabilities, to walk and bicycle to school

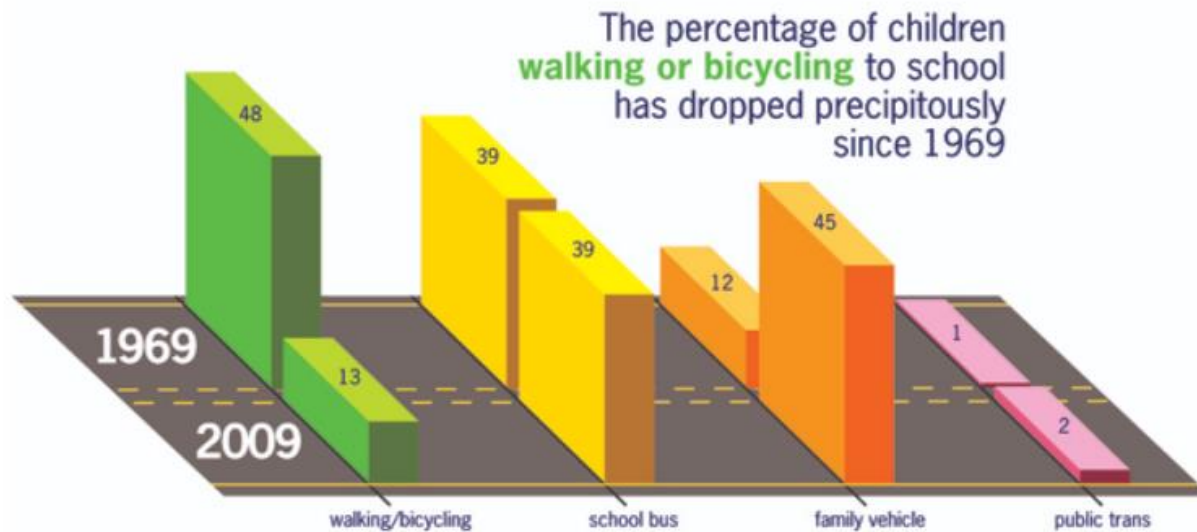
Sustainability:

to facilitate the planning, development, and implementation of projects and activities that will improve safety and reduce traffic, fuel consumption, and air pollution in the vicinity of schools

Need

Support for Safe Routes to School is needed in order to implement **programs** and **projects** to:

- **INCREASE WALKING AND BICYCLING TO SCHOOL**



The Safe Routes partnership research indicates that increased walking and bicycling to school results in:

- Healthier and safer students
- Reduced traffic congestion
- Reduced student absences and tardiness
- Cleaner air
- Improved academic performance

SafeRoutes

Connecticut Safe Routes to School



Connecticut Department of Transportation

Framework

Non-Infrastructure



EDUCATION



ENCOURAGEMENT



EQUITY



EVALUATION

Infrastructure



ENFORCEMENT



ENGINEERING

Framework:

The six E's to ensure a comprehensive approach to both non infrastructure activities as well as safety projects.

SafeRoutes

Connecticut Safe Routes to School



Connecticut Department of Transportation

Legislation

One Hundred Seventeenth Congress of the United States of America

AT THE FIRST SESSION

*Begun and held at the City of Washington on Sunday,
the third day of January, two thousand and twenty-one*

An Act

To authorize funds for Federal-aid highways, highway safety programs, and transit programs, and for other purposes.

*Be it enacted by the Senate and House of Representatives of
the United States of America in Congress assembled,*

SECTION 1. SHORT TITLE; TABLE OF CONTENTS.

(a) **SHORT TITLE.**—This Act may be cited as the “Infrastructure Investment and Jobs Act”.

- [BILLS-117hr3684enr.pdf \(congress.gov\)](#)

SafeRoutes

Connecticut Safe Routes to School



Connecticut Department of Transportation

SafeRoutes

Connecticut Safe Routes to School



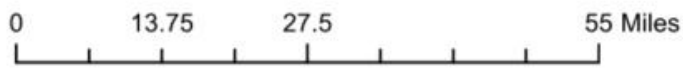
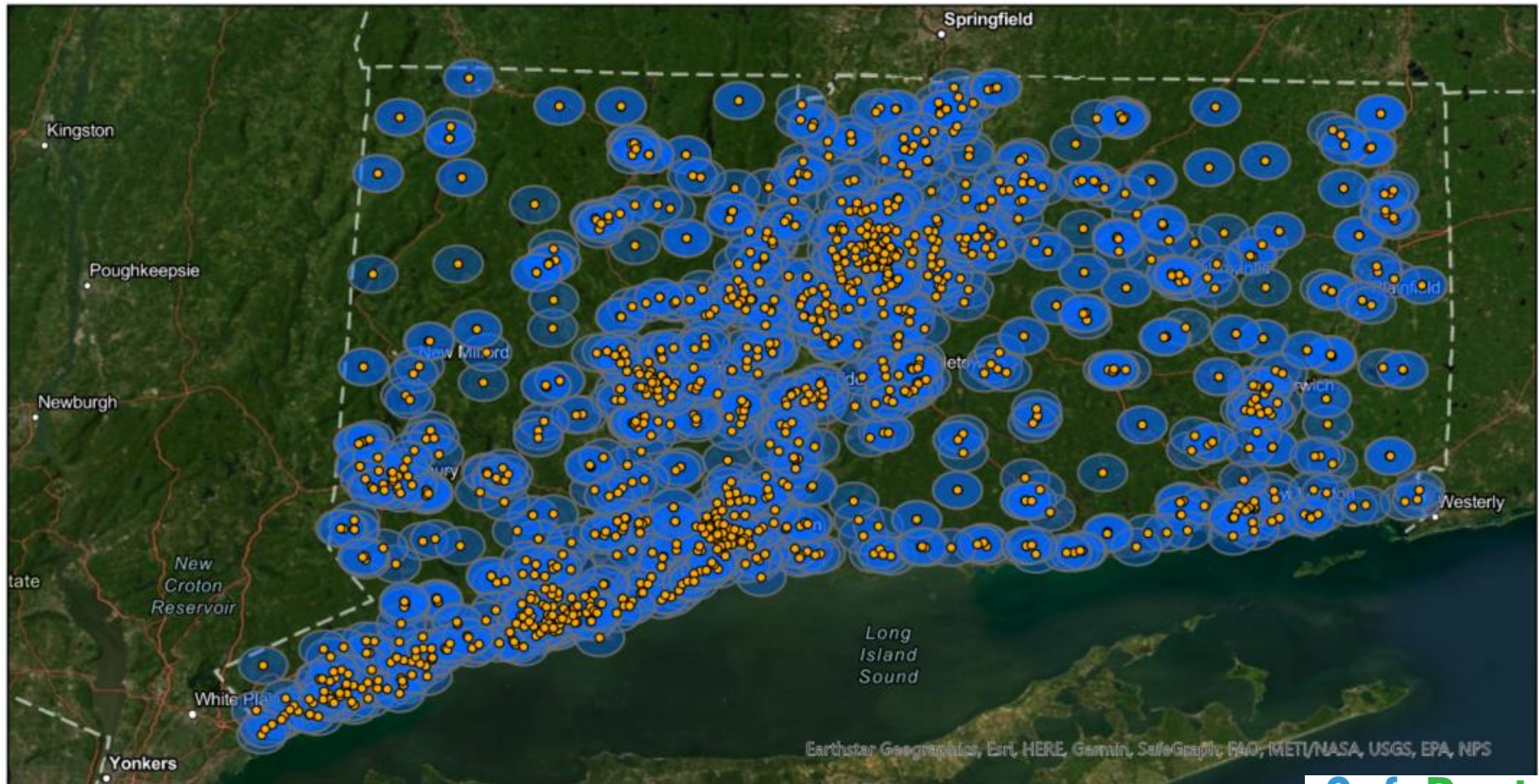
Connecticut Department of Transportation

Legislation

- **SEC. 11119. SAFE ROUTES TO SCHOOL. (a) IN GENERAL.**—Chapter 2 of title 23, United States Code, is amended by inserting after section 207 the following: “§ 208. Safe routes to school
- “(a) DEFINITIONS.—In this section: “(1) **IN THE VICINITY OF SCHOOLS.**—The term ‘in the vicinity of schools’, with respect to a school, means the **approximately 2-mile area** within bicycling and walking distance of the school. “(2) **PRIMARY, MIDDLE, AND HIGH SCHOOLS.**—The term ‘primary, middle, and high schools’ means schools providing education from **kindergarten through 12th grade.**



Areas of the state "in the vicinity of schools" as defined by IIJA



- SRTS_CTSchools
- SRTS_CTSchools_Buffer2mi

SafeRoutes

Connecticut Safe Routes to School



Connecticut Department of Transportation

Infrastructure

“(1) INFRASTRUCTURE-RELATED PROJECTS.—“(A) IN GENERAL.—

Amounts apportioned to a State under this section may be used for the

- planning,
- design, and
- construction

of infrastructure-related projects that will substantially improve the ability of students to walk and bicycle to school, including

- sidewalk improvements,
- traffic calming and speed reduction improvements,
- pedestrian and bicycle crossing improvements,
- on-street bicycle facilities,
- off-street bicycle and pedestrian facilities,
- secure bicycle parking facilities, and
- traffic diversion improvements in the vicinity of schools.

“(B) LOCATION OF PROJECTS.—Infrastructure-related projects under subparagraph (A) may be carried out on any public road or any bicycle or pedestrian pathway or trail in the vicinity of schools.

SafeRoutes

Connecticut Safe Routes to School



Connecticut Department of Transportation

Non Infrastructure

“(2) NONINFRASTRUCTURE-RELATED ACTIVITIES.— “(A) IN GENERAL.—In addition to projects described in paragraph (1), amounts apportioned to a State under this section may be used for noninfrastructure-related activities to encourage walking and bicycling to school, including:

- public awareness campaigns and outreach to press and community leaders,
- traffic education and enforcement in the vicinity of schools,
- student sessions on bicycle and pedestrian safety, health, and environment, and
- funding for training, volunteers, and managers of safe routes to school programs.

SafeRoutes

Connecticut Safe Routes to School



Connecticut Department of Transportation

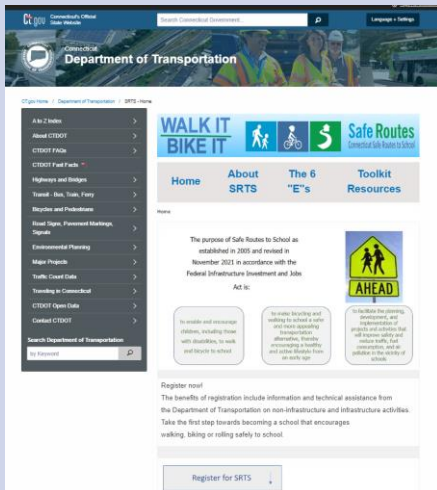
Programs



Equity

EQUITY

- Updated framework to include Equity
- Updated Website including Accessibility



- Expansion of the program to include all students



Education

EDUCATION

- Outreach to superintendents, school principals and advocates
- SRTS Bike/Ped Safety Working Group
- Observations of existing bike ed curriculum



- Collaboration with other states on best practices



Encouragement

ENCOURAGEMENT

- Walk, Bike and Roll to School Day
- Bring your Child to Work Day



- Additional outreach and events.

Projects



Evaluation

- Technical Assistance
- Toolkit and Checklists
- Walk Audits and SRTS Plans
- Story map



- Documentation of Progress and Performance Measures
- Coordinated Active Transportation Efforts



Enforcement

Programmatic Safety Projects

- Safety Countermeasures in the vicinity of schools
- Establishment of School Zones
- Dynamic Speed Feedback Signs



Engineering

Infrastructure -

- 2006-2012 SRTS Federal funding allowed for 21 infrastructure projects
 - Sidewalks
 - Pathways
 - Bicycle and pedestrian facilities



Quick build -

- Crosswalks
- Raised Crosswalks
- Rectangular Rapid Flashing Beacons (RRFBs)
- Bicycle Parking Facilities

Alignment with Vision Zero



Resources

- [Safe Routes Partnership](#)
- [National Safe Routes to School](#)
- [Vision Zero for Youth](#)

SafeRoutes

Connecticut Safe Routes to School



Connecticut Department of Transportation