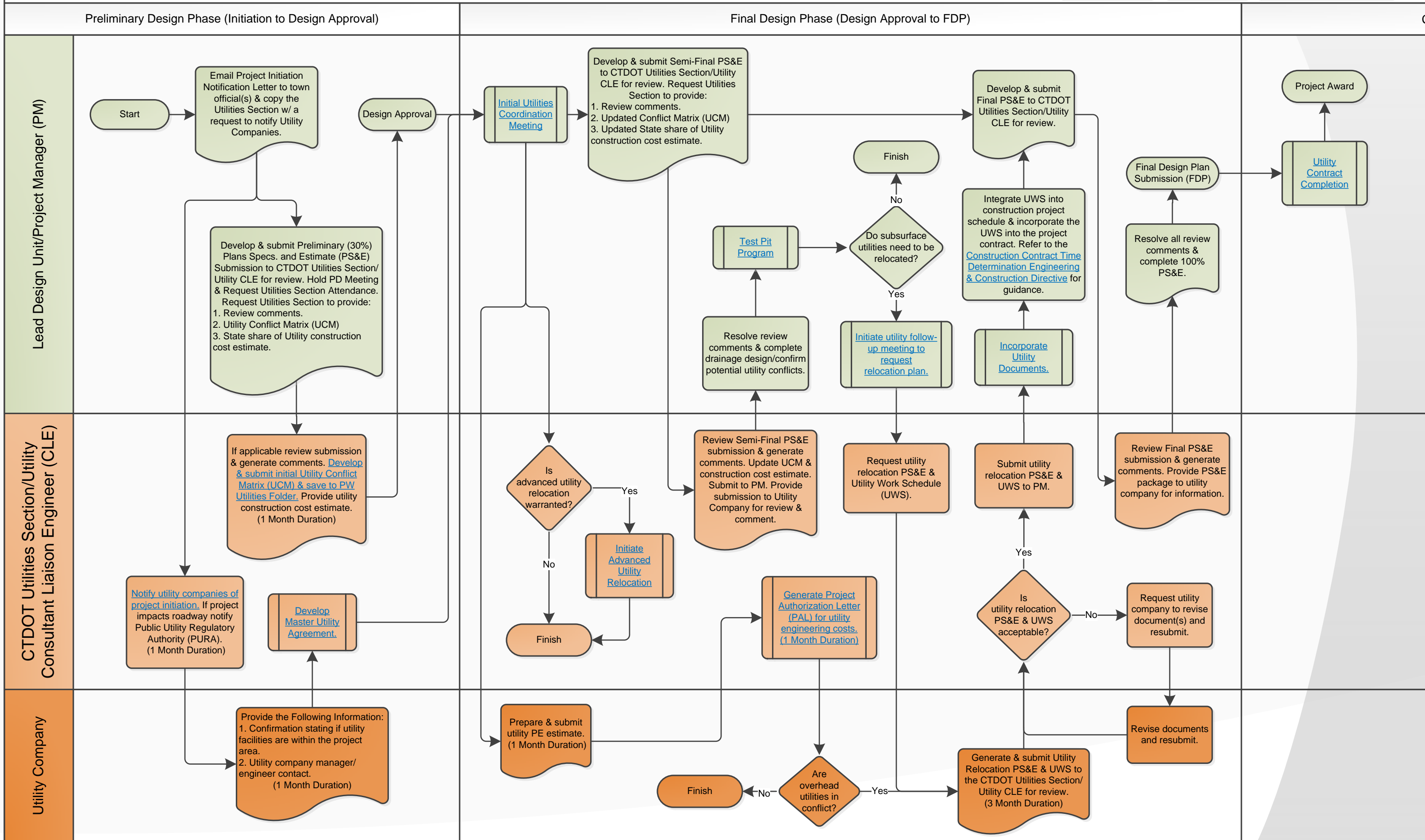


Utility Coordination Process Map v3.5

[Who Contributed to this Process Map](#)

[How to Read a Process Map](#)

[Initiate Correspondence to Fix/Update the Process Map](#)



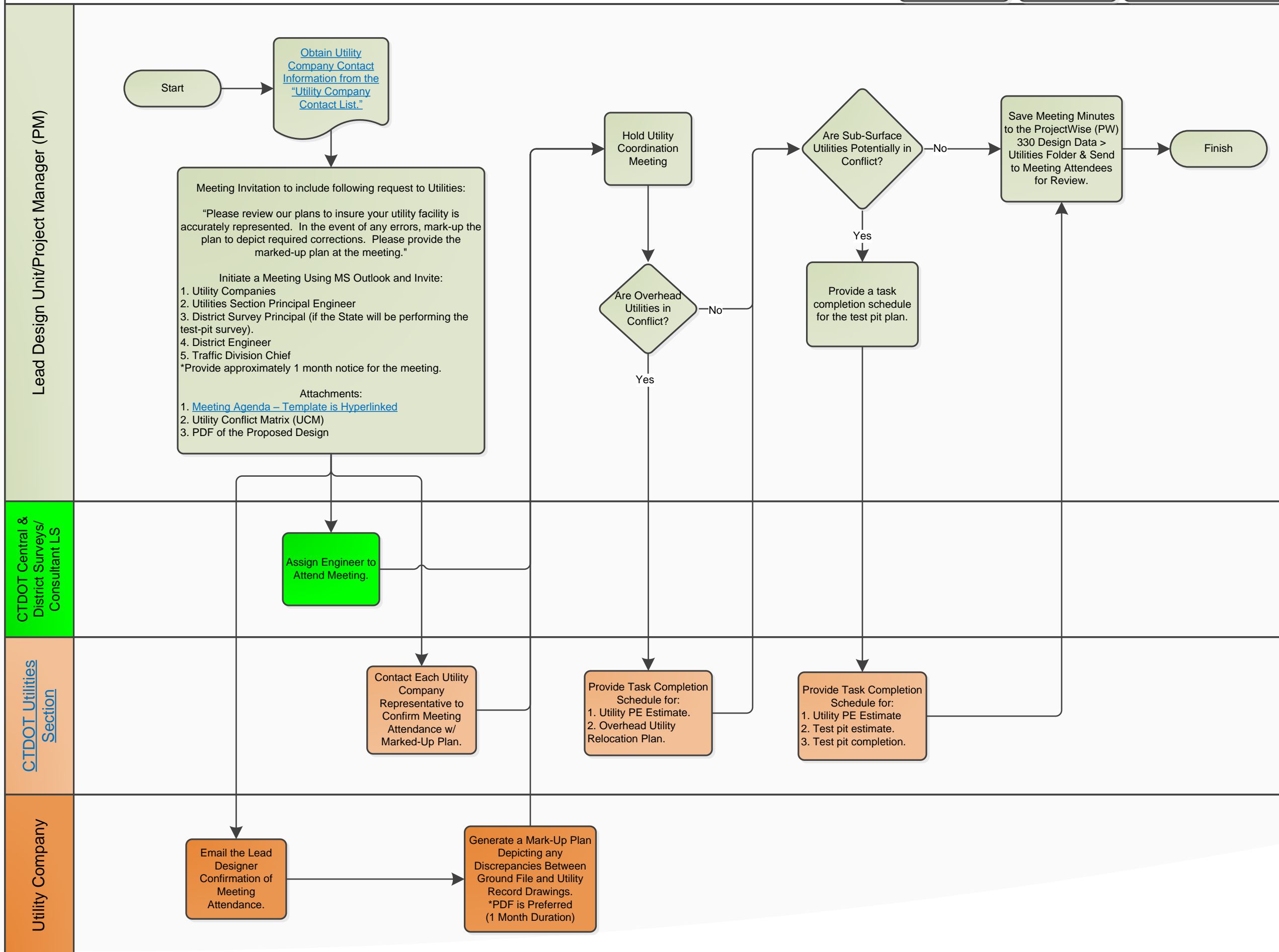
Process maps are intended for guidance. Task duration estimates and procedure may vary based on project. Project managers may vary from mapped procedures on an as-needed basis.

Initial Utility Coordination Meeting Process Map

[Who Contributed to this Process Map](#)

[How to Read a Process Map](#)

[Initiate Correspondence to Fix/Update the Process Map](#)



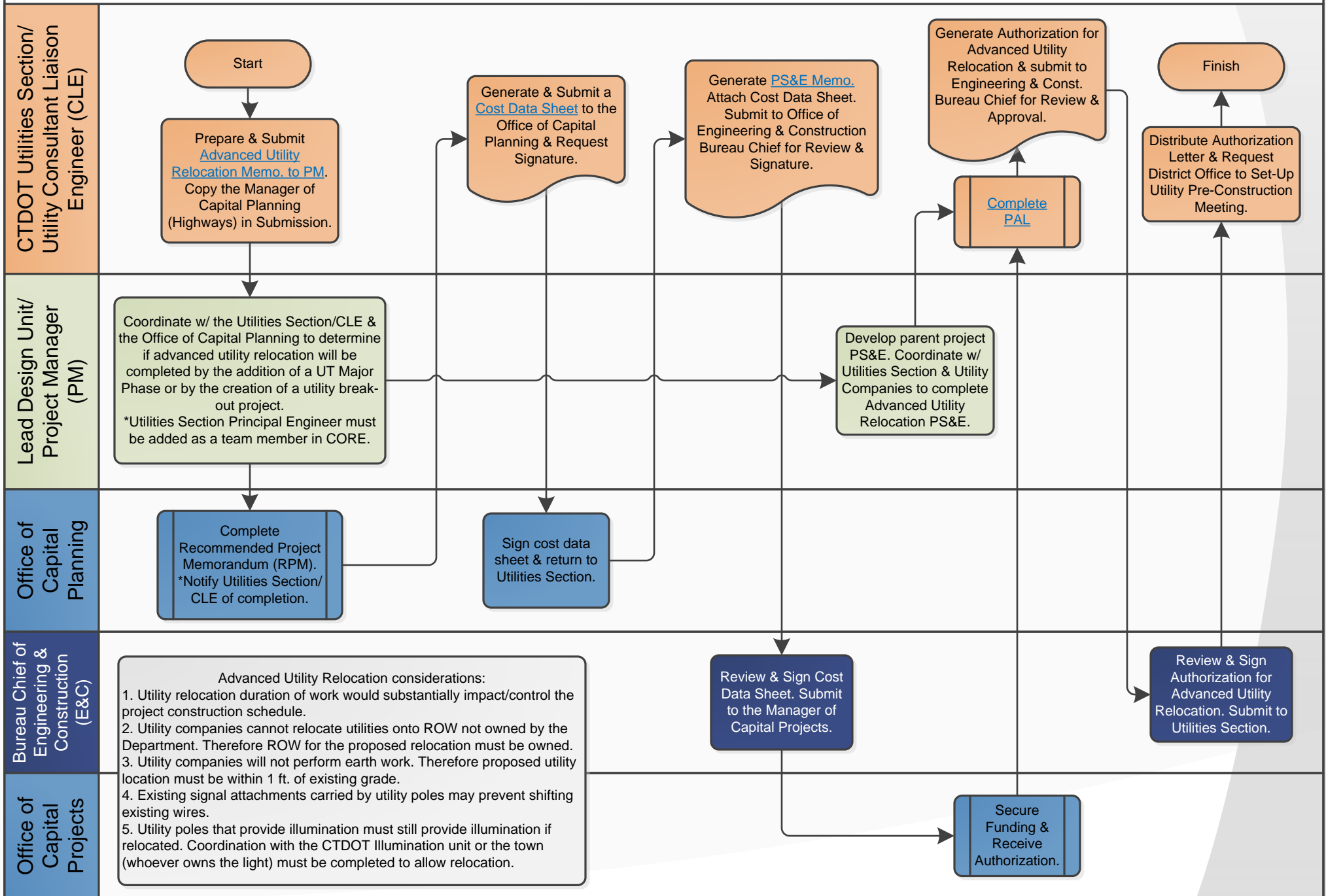
Advanced Utility Relocation Process Map

[Who Contributed to this Process Map](#)

[How to Read a Process Map](#)

[Initiate Correspondence to Fix/Update the Process Map](#)

Final Design Phase *May also be Completed During Preliminary Design Phase if Required



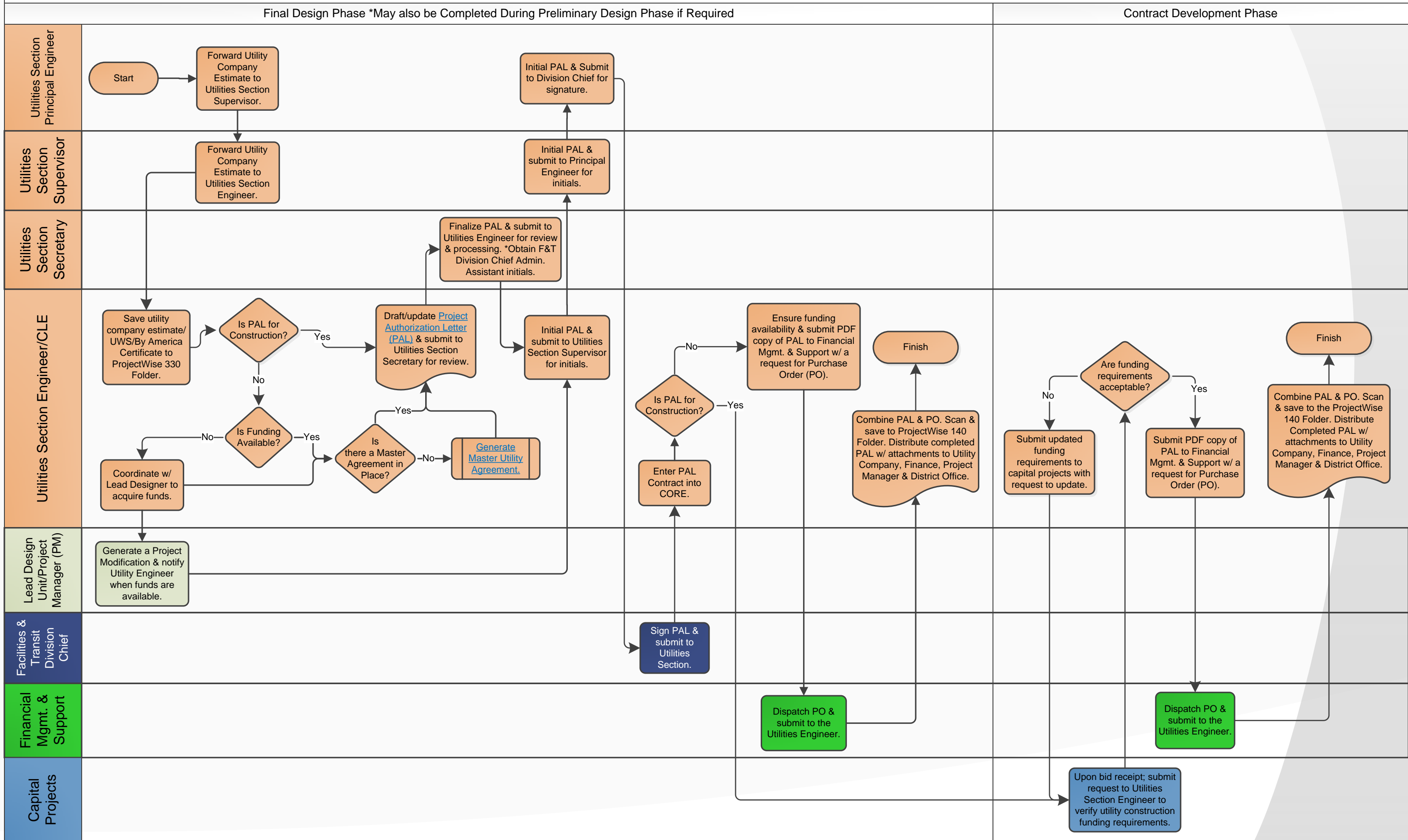
Process maps are intended for guidance. Task duration estimates and procedure may vary based on project. Project managers may vary from mapped procedures on an as-needed basis.

Project Authorization Letter (PAL) Process Map

[Who Contributed to this Process Map](#)

[How to Read a Process Map](#)

[Initiate Correspondence to Fix/Update the Process Map](#)



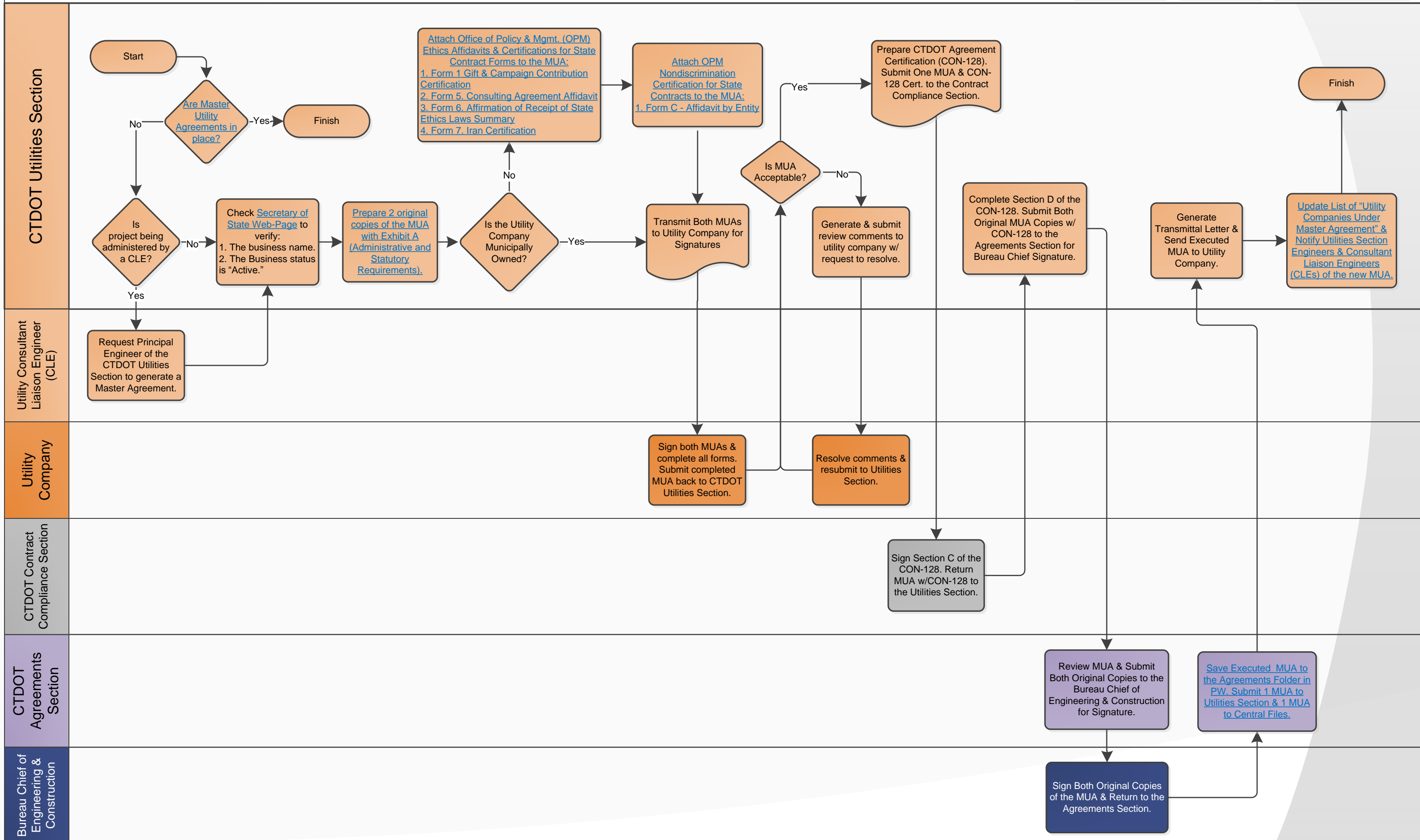
*Disclaimer: Process maps are intended for guidance. Task duration estimates and procedure may vary based on project. Project managers may vary from mapped procedures on an as-needed basis.

Master Utility Agreement (MUA) Process Map

[Who Contributed to this Process Map](#)

[How to Read a Process Map](#)

[Initiate Correspondence to Fix/Update the Process Map](#)



*Disclaimer: Process maps are intended for guidance. Task duration estimates and procedure may vary based on project. Project managers may vary from mapped procedures on an as-needed basis.

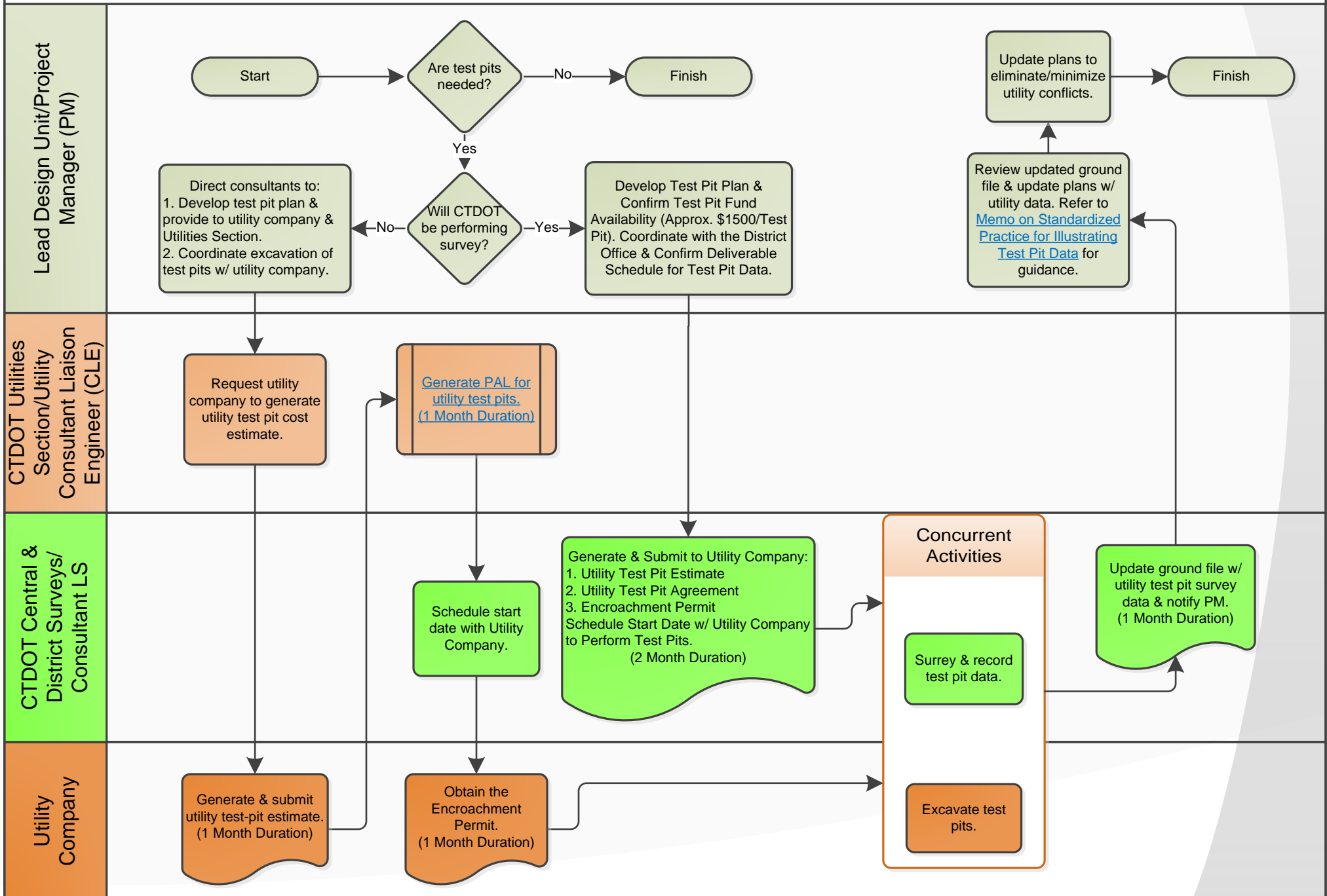
Test Pit Program Process Map

[Who Contributed to this Process Map](#)

[How to Read a Process Map](#)

[Initiate Correspondence to Fix/Update the Process Map](#)

Final Design Phase (Design Approval to FDP)



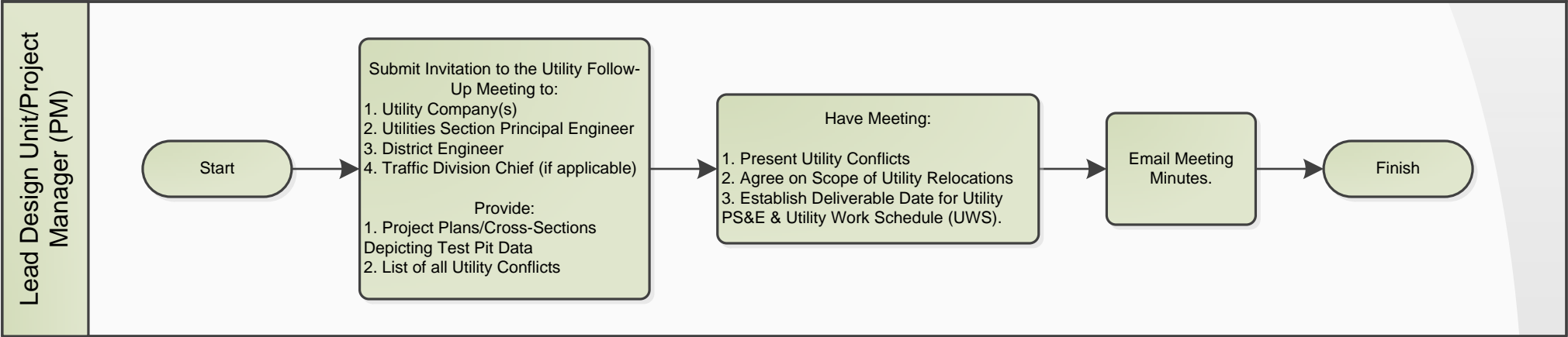
*Disclaimer: Process maps are intended for guidance. Task duration estimates and procedure may vary based on project. Project managers may vary from mapped procedures on an as-needed basis.

Utilities Coordination Follow-Up Meeting Process Map

[Who Contributed to this Process Map](#)

[How to Read a Process Map](#)

[Initiate Correspondence to Fix/Update the Process Map](#)



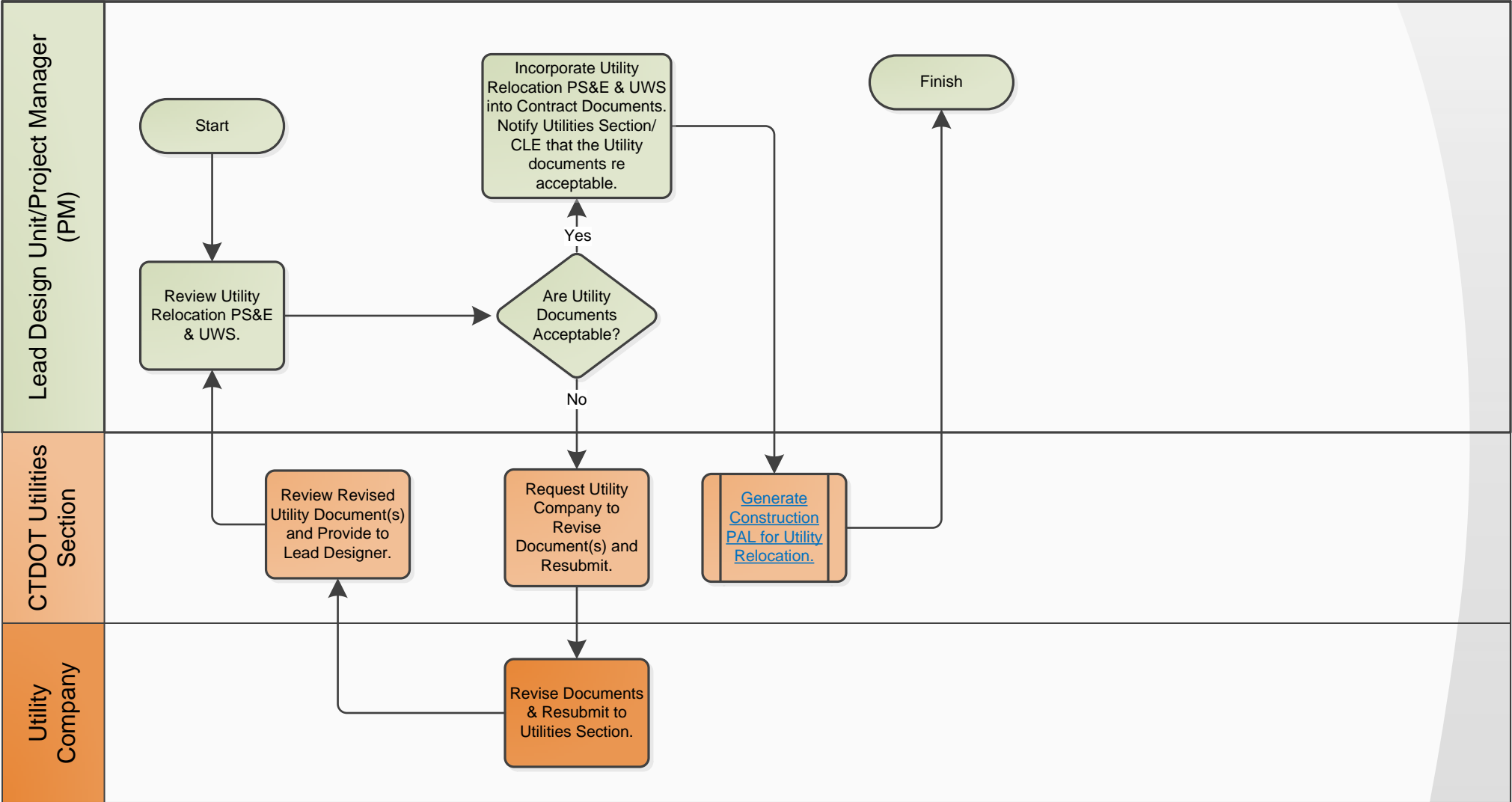
*Disclaimer: Process maps are intended for guidance. Task duration estimates and procedure may vary based on project. Project managers may vary from mapped procedures on an as-needed basis.

Incorporate Utility Documents

[Who Contributed to this Process Map](#)

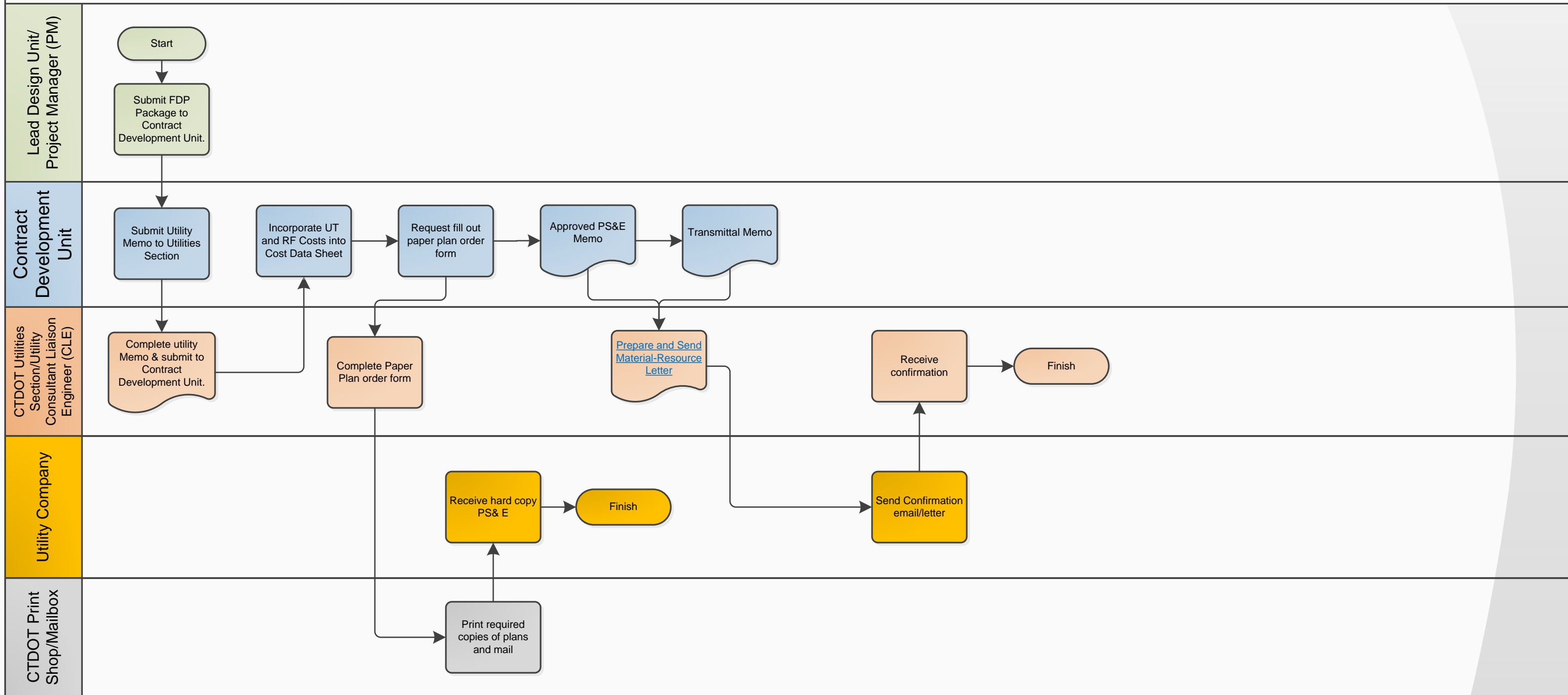
[How to Read a Process Map](#)

[Initiate Correspondence to Fix/Update the Process Map](#)



*Disclaimer: Process maps are intended for guidance. Task duration estimates and procedure may vary based on project. Project managers may vary from mapped procedures on an as-needed basis.

Contract/Development Phase



Utility Company Coordination Process Map Working Group

To implement process map changes, update hyperlinks or make recommendations, initiate coordination with the below staff.

Name	Title	Agency	Company Contact
CTDOT Utilities Section – Process Map Owner			
Sohrab Afrazi	Principal Engineer	CTDOT	Sohrab.Afrazi@ct.gov
Michael Piteo	TE Supervisor	CTDOT	Michael.Piteo@ct.gov
Andrej Mysliwec	TE Supervisor	CTDOT	Andrzej.Mysliwec@ct.gov
Derek Brown	TE3	CTDOT	Derek.Brown@ct.gov
CTDOT AEC Applications - Primary Facilitator			
John Dudzinski	TE3	CTDOT	John.Dudzinski@ct.gov
Mathew Calkins	TE3	CTDOT	Mathew.Calkins@ct.gov
Nicholas Langer	TE2	CTDOT	Nicholas.Langer@ct.gov
CTDOT Central Surveys Section			
Robert Baron	Principal Engineer	CTDOT	Robert.Baron@ct.gov
CTDOT State Highway Design			
Scott Bushee	TE Supervisor	CTDOT	Scott.Bushee@ct.gov
Byong Kim	TE3	CTDOT	Byong.Kim@ct.gov