

What is the Connecticut Statewide Transportation Study?

The study collected information on average daily travel behavior of representative group of residents in the state of Connecticut including how they travel, where they go, why they travel, and how long it takes. Additionally, the study collected household and person level demographic information.

How are the statistics compiled?

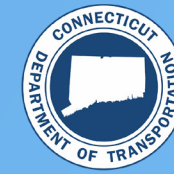
The statistics were generated using travel survey data from the 2016 Connecticut Statewide Transportation Study. All statistics reported are based on weighting analysis to match characteristics of CT residents from the 2009-2013 American Community Survey.

What else should I know about the statistics reported?

Where appropriate, imputed, or logically estimated, values are utilized to supplement the collected data from the survey. As with any survey, the statistics are subject to error and bias.

How can I learn more about the study?

Please visit:
ct.gov/dot/cwp/view.asp?a=1383&Q=586922
for more information.

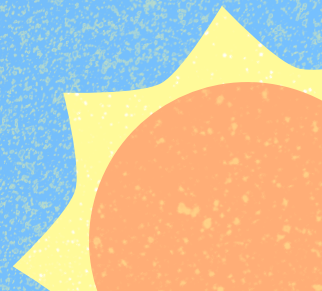


CONNECTICUT STATEWIDE



TRANSPORTATION STUDY

CT Household Transportation Study Statewide Statistics





Key Travel Characteristics

How many trips do CT Residents make on an average weekday?

Total individual trips made is about 11.8 million. These are made by nearly 3.4 million CT residents residing in 1.4 million households.



11.8M



3.4M



1.4M



8.68

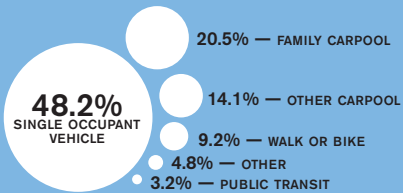
AVERAGE NUMBER OF TRIPS MADE DAILY BY A HOUSEHOLD



3.51

AVERAGE NUMBER OF TRIPS MADE DAILY BY A PERSON

How do they travel?



How long do they travel for?



22.9 MINS

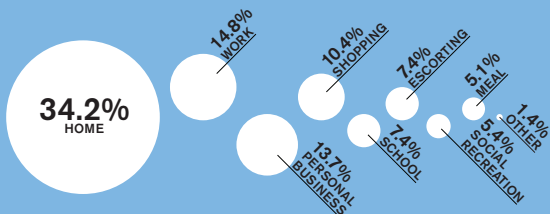
AVERAGE REPORTED GENERAL TRAVEL DURATION



29.7 MINS

AVERAGE REPORTED WORK TRAVEL DURATION

Why do they travel?



Key Household Characteristics

What is the composition of households?



2.47

AVERAGE NUMBER OF PERSONS



1.21

AVERAGE NUMBER OF WORKERS



0.54

AVERAGE NUMBER OF CHILDREN

What is the profile of vehicle ownership?



9.0%

0 VEHICLE HOUSEHOLDS



32.6%

1 VEHICLE HOUSEHOLDS



38.2%

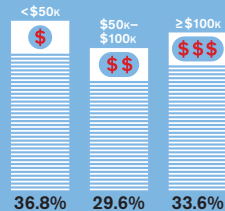
2 VEHICLE HOUSEHOLDS



20.2%

3+ VEHICLE HOUSEHOLDS

What is the distribution of household income?

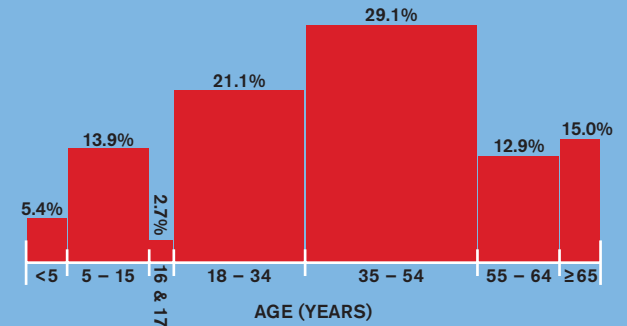


What are the different housing types?



Key Person Characteristics

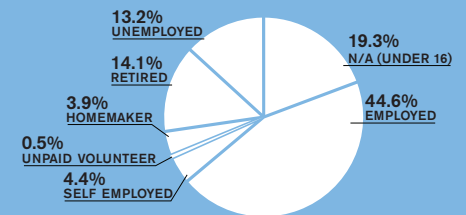
What is the age distribution of residents?



What is the gender profile?



What is the distribution of employment status?



What is the distribution of driver's license status?

