

The copies of the pilot study print and website materials are organized as follows:

- Pre-notice Postcard (2 Pages)
- Invitation Packet Envelope (1 Page)
- Invitation Letter (2 Pages)
- Travel Log (2 Pages)
- Reminder Postcard (2 Pages)
- Screenshots of different pages of the website (10 Pages)



Connecticut Transportation Institute
270 Middle Turnpike, Unit 5202, Storrs, CT 06269-5202

In a few days, you will receive an invitation packet in the mail to participate in an important transportation study.

FIRST-CLASS MAIL
U.S. POSTAGE
PAID
STORRS, CT
PERMIT NO 36

The Connecticut Department of Transportation and the Connecticut Transportation Institute at UCONN are performing this study to better understand the travel behaviors and transportation needs of Connecticut residents. The information collected in this study will help improve the transportation system and prioritize future transportation improvements in the state of Connecticut.

Yours is one of the few households randomly selected to participate in the study and your participation will have a significant impact. The information you provide will be kept confidential and will only be used for transportation planning purposes without disclosing identifiable information.

As thanks for your participation, your household will receive a \$10 Visa gift card after completing the study.

To start now, go to the secure study website with your password: <https://cttransportationstudy.org>

<password>

Or call toll-free: 1-844-872-2562

? Questions? Email: help@cttransportationstudy.org

Lo invitamos a compartir sus experiencias de traslado en su región.

Para participar, llame sin costo: 1-844-872-2562



CONNECTICUT STATEWIDE



TRANSPORTATION STUDY

Help improve transportation in Connecticut!

MASSACHUSETTS

RHODE ISLAND

NEW YORK

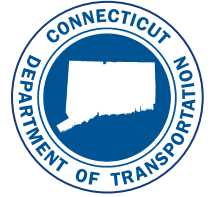


UConn



STATE OF CONNECTICUT

DEPARTMENT OF TRANSPORTATION



2800 BERLIN TURNPIKE, P.O. BOX 317546
NEWINGTON, CONNECTICUT 06131-7546

<Letter Date>

<First and last name/City name resident
Street Address 1, Street Address 2
City, CT #####>

Dear <First and last name/City name resident>

I'm asking you to help us improve our state's transportation system by participating in the Connecticut Statewide Transportation Study. Your input will help the Connecticut Department of Transportation to better plan and prioritize future transportation improvements. Yours is one of the few households randomly selected to participate in this study. The information you provide will have a significant impact on transportation planning in the state and in your community. As thanks for your time, your household will receive a **\$10 Visa gift card** after completing the study.

PARTICIPATION IN THE STUDY IS A SIMPLE THREE STEP PROCESS:

STEP 1: Briefly tell us about your household. You can do this now.



Log on to the secure website using your password:

Study website: <https://cttransportationstudy.org>

Password:



Or, participate over the phone by calling toll-free:

1-844-872-2562

- Monday-Friday: 9AM – 8PM ET
- Saturday: 10AM – 4PM ET

Or leave us a message with the best time and number for us to call you.

STEP 2: Track your trips on <travel day>. We ask that each member of your household keep track of every trip they make that day, using the enclosed Travel Logs to help remember the details of each trip.

STEP 3: Tell us about your travels. Just like Step 1, return to the study website with your password or call us to report the trips you made on <travel date>.

That's all it takes to help us with this critical study!

Your privacy will be protected and your name and address will never be linked to the study form. All information will be kept confidential and will only be used for transportation planning purposes without disclosing identifiable information. Please refer to the study website for our privacy policy.

For more details about this study, please see the back of this letter for answers to Frequently Asked Questions. You can also email help@cttransportationstudy.org or call **1-844-872-2562**.

Thank you in advance for your important contribution to improving transportation in Connecticut.

Sincerely,

Thomas Maziarz
Bureau Chief, Bureau of Policy and Planning
Connecticut Department of Transportation

Lo invitamos a compartir sus experiencias de traslado en su región. Para participar, llame sin costo: 1-844-872-2562



UConn



CONNECTICUT STATEWIDE



TRANSPORTATION STUDY

FREQUENTLY ASKED QUESTIONS

SECURE STUDY WEBSITE: <https://cttransportationstudy.org>

EMAIL: help@cttransportationstudy.org

TOLL-FREE TELEPHONE: 1-844-872-2562

Lo invitamos a compartir sus experiencias de traslado en su región. Para participar, llame sin costo: 1-844-872-2562

GENERAL INFORMATION

What is the Connecticut Statewide Transportation Study all about? The study is collecting information about everyday travel behavior of residents in the state of Connecticut including how we travel, where we go, why we travel, how long it takes, etc.

How was I selected to participate? Invited households (like yours) were randomly selected from all the residential addresses in the state. The random approach helps us understand the travel needs of all types of households from different regions in the state.

Why should I participate? Current data about residents' travel characteristics helps the state understand and plan for current and future transportation needs. It also helps local agencies plan for transportation improvements in your communities. Your responses have a large impact because yours is one of a small number of households invited to participate in the study.

My travel on the date assigned to me isn't "typical" – should I still participate? Yes. This study aims to collect travel information on the date assigned to you even if it is not a "typical" travel day. We will separately ask you a few questions about your usual travel habits.

I don't drive or travel very much – should I still participate? Yes. Whether you only walk or ride transit, don't go anywhere at all, or make a lot of trips, please report what actually happens on your assigned travel date. We want to understand all kinds of travel, regardless of what mode you take or how often you travel.

Who is sponsoring this study? This study is sponsored by Connecticut Department of Transportation in partnership with Connecticut Transportation Institute at UCONN.

What are my rights as a participant? You do not have to be in this study if you do not want to. If you agree to be in the study, but later change your mind, you may drop out at any time. There are no penalties or consequences of any kind if you decide that you do not want to participate, though you will not receive compensation. We will be happy to answer any questions you have about this study. If you have further questions about this study or if you have a research-related problem, you may contact the principal investigator, Dr. Karthik Charan Konduri at kkonduri@enr.uconn.edu. If you have any questions concerning your rights as a research subject, you may contact the UCONN Institutional Review Board (IRB) at 860-486-8802. The IRB is a group of people who review research studies to protect the rights and welfare of study participants. This protocol has been approved by the UCONN IRB, Protocol #H15-307.

What will I get for participating? As thanks for your time, your household will receive a \$10 Visa gift card after every person in your household completes the study.

TAKING THE SURVEY

What do I use the "Travel Log" for? The "Travel Log" can be used to keep track of the details of your trips on the assigned travel date.

Why is my household assigned a specific travel date? We are asking for information about the travel made by each person in your household on one chosen weekday. We call this your "travel day" or "travel date". This helps us develop a full picture of all the travel that happens across the region and the state on each weekday (even if it is not a "typical" travel day).

What is a trip? A trip is any time you travel from one location and stop at a new location. Even if you stop briefly for gas, at an ATM, or to drop a child off at school, travel to that stop counts as one trip, and travel from that stop to the next place counts as a separate trip. If you go out and return to the same place without stopping (such as a jog, bike ride, or leisurely drive) then this counts as two trips: from the starting location to the furthest point you reach, and the trip back to your starting point.

What are some examples of trips? See below for some common trips that people make:

- Drive to work
- Drop your child off at school
- Walk the dog
- Bike to the grocery store
- Walk to the bus stop and then ride the bus to the bank
- Carpool to a meeting in New York

Often what we think of as one trip may actually be a chain of several trips. For example, "I picked up my child and stopped to buy gas on my way home from work" counts as three trips: 1) a trip from work to your child's activity, 2) a trip from your child's activity to the gas station, and 3) the trip home.

Should my children participate? Yes, trips to and from school, sports practice, play dates, and other activities help us understand the full nature of how the transportation system is used, and how it can be improved.

Who should be counted as a member of my household? Everyone who lives in your dwelling unit and shares the kitchen is a part of your household, including family and non-family members.

STUDY OVERVIEW

This study has 2 parts

1 HOUSEHOLD INFO SURVEY

2 TRAVEL DIARY SURVEY

When do I take the survey?

As soon as convenient

After the day of your assigned travel

Who takes the survey?

You

All adults (an adult should also report trips for children under 18)

How long will the survey take?

About 15 minutes

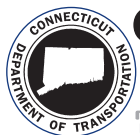
About 5 minutes per person

What is the survey about?

We ask about your household and household members' typical travel behavior

Return to the website (or call) to report the trips you made on your assigned travel date (use your Travel Log to keep track!)

After completing both parts, your household will receive a \$10 Visa gift card



CONNECTICUT STATEWIDE



TRANSPORTATION STUDY

TRAVEL LOG INSTRUCTIONS

SECURE STUDY WEBSITE: <https://cttransportationstudy.org>
TOLL-FREE TELEPHONE: 1-844-872-2562

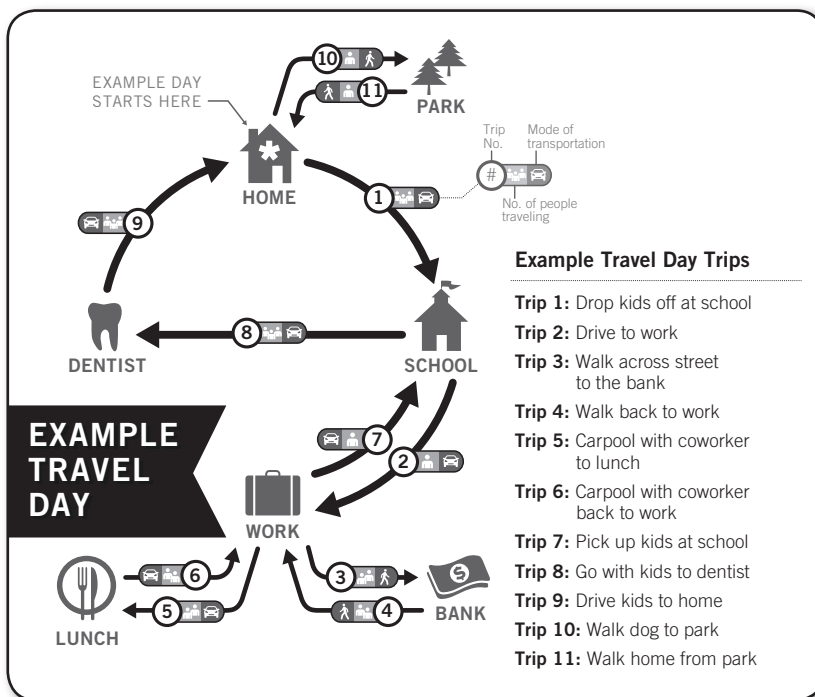
STEP 1: On your assigned travel day:

Each adult (age 18 or older) in your household should take this Travel Log with them and note each trip made. Note: Your travel day begins at 3AM on your assigned day and ends 24 hours later. For many people, the first trip begins when they leave home in the morning.

STEP 2: After you complete your travel for the day:

Have your password ready (from the invitation letter) and call us or log on to the secure study website to record all your logged trips. Adults should also report all trips for children (under age 18) in the household.

What is a trip? A trip is any time you travel from one location and stop at a new location. Even if you stop briefly for gas, at an ATM, or to drop a child off at school, travel to that stop counts as one trip, and travel from that stop to the next place counts as a separate trip. If you go out and return to the same place without stopping (such as a jog, bike ride, or leisurely drive) then this counts as two trips: from the starting location to the furthest point you reach, and the trip back to your starting point.



CONNECTICUT STATEWIDE



TRANSPORTATION STUDY

TRAVEL LOG INSTRUCTIONS

SECURE STUDY WEBSITE: <https://cttransportationstudy.org>
TOLL-FREE TELEPHONE: 1-844-872-2562

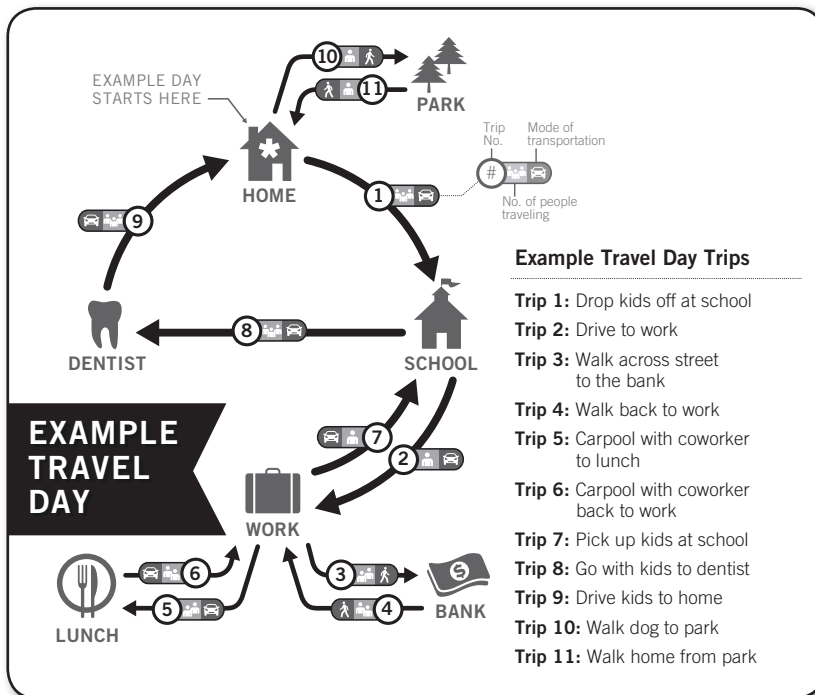
STEP 1: On your assigned travel day:

Each adult (age 18 or older) in your household should take this Travel Log with them and note each trip made. Note: Your travel day begins at 3AM on your assigned day and ends 24 hours later. For many people, the first trip begins when they leave home in the morning.

STEP 2: After you complete your travel for the day:

Have your password ready (from the invitation letter) and call us or log on to the secure study website to record all your logged trips. Adults should also report all trips for children (under age 18) in the household.

What is a trip? A trip is any time you travel from one location and stop at a new location. Even if you stop briefly for gas, at an ATM, or to drop a child off at school, travel to that stop counts as one trip, and travel from that stop to the next place counts as a separate trip. If you go out and return to the same place without stopping (such as a jog, bike ride, or leisurely drive) then this counts as two trips: from the starting location to the furthest point you reach, and the trip back to your starting point.





CONNECTICUT STATEWIDE



TRANSPORTATION STUDY

TRAVEL LOG

SECURE STUDY WEBSITE:
<https://cttransportationstudy.org>
TOLL-FREE TELEPHONE:
1-844-872-2562

Name

Travel Date

Password

	When did your trip...		Where did you go?		Traveled by: 	Traveled with:
	Start ⌚	End ⌚	Description	Address, Intersection, or Business Name		
Example	7:05 AM	7:20 AM	Drop kids at school	West Middle Elementary School, Hartford	Car	Grace, Sophie
Example	7:25 AM	7:45 AM	Drive to work	550 Main St, Hartford	Car	N/A
1st Trip						
2nd Trip						
3rd Trip						
4th Trip						
5th Trip						
6th Trip						
7th Trip						
8th Trip						
9th Trip						
10th Trip						

*This sheet is for your use only. We do not need you to return this form.
If you have questions, please email: help@cttransportationstudy.org*

• Include ALL trips you made on your travel day, even short stops such as stopping for gas or picking up coffee

• Include only the time spent traveling when listing your 'start' and 'end' times. Do not include any time spent at the location



Questions?

TOLL-FREE TELEPHONE:
1-844-872-2562

EMAIL:

help@cttransportationstudy.org



CONNECTICUT STATEWIDE



TRANSPORTATION STUDY

TRAVEL LOG

SECURE STUDY WEBSITE:
<https://cttransportationstudy.org>
TOLL-FREE TELEPHONE:
1-844-872-2562

Name

Travel Date

Password

	When did your trip...		Where did you go?		Traveled by: 	Traveled with:
	Start ⌚	End ⌚	Description	Address, Intersection, or Business Name		
Example	7:05 AM	7:20 AM	Drop kids at school	West Middle Elementary School, Hartford	Car	Grace, Sophie
Example	7:25 AM	7:45 AM	Drive to work	550 Main St, Hartford	Car	N/A
1st Trip						
2nd Trip						
3rd Trip						
4th Trip						
5th Trip						
6th Trip						
7th Trip						
8th Trip						
9th Trip						
10th Trip						

*This sheet is for your use only. We do not need you to return this form.
If you have questions, please email: help@cttransportationstudy.org*

• Include ALL trips you made on your travel day, even short stops such as stopping for gas or picking up coffee

• Include only the time spent traveling when listing your 'start' and 'end' times. Do not include any time spent at the location



Questions?

TOLL-FREE TELEPHONE:
1-844-872-2562

EMAIL:

help@cttransportationstudy.org



TRANSPORTATION STUDY

CONNECTICUT TRANSPORTATION INSTITUTE

270 Middle Turnpike, Unit 5202
Storrs, CT 06269-5202

FIRST-CLASS MAIL
U.S. POSTAGE
PAID
STORRS, CT
PERMIT NO 36

**Help improve the future of transportation in
Connecticut by participating in this important study!**



Connecticut Transportation Institute
270 Middle Turnpike, Unit 5202, Storrs, CT 06269-5202

**We recently mailed you an invitation to participate
in the Connecticut Statewide Transportation Study.**

FIRST-CLASS MAIL
U.S. POSTAGE
PAID
STORRS, CT
PERMIT NO 36

If you have already completed the study, **thank you!**

If not, you still have time and participation is easy – please see the instructions below to get started.

Please tell us about your travels on: **<travel date>**

To participate, go online and enter your password: **<https://cttransportationstudy.org>**

<password>

Or call toll-free: 1-844-872-2562

Remember, your input is important! Your participation will help the Connecticut Department of Transportation plan and prioritize future transportation improvements in the state.

As thanks for your participation, your household will receive a **\$10 Visa gift card** after completing the study.

? Questions? Email: help@cttransportationstudy.org

Lo invitamos a compartir sus experiencias de traslado en su región.

Para participar, llame sin costo: 1-844-872-2562



CONNECTICUT STATEWIDE



TRANSPORTATION STUDY

Help improve transportation in Connecticut!

REMINDER:
You can still participate!





[Go to survey](#)

Click "Go to survey" to start the survey with your password. If you do not have a password, please [contact us](#) for more information.

Lo invitamos a compartir sus experiencias de traslado en su región. Para participar, llame sin costo: 1-844-872-2562

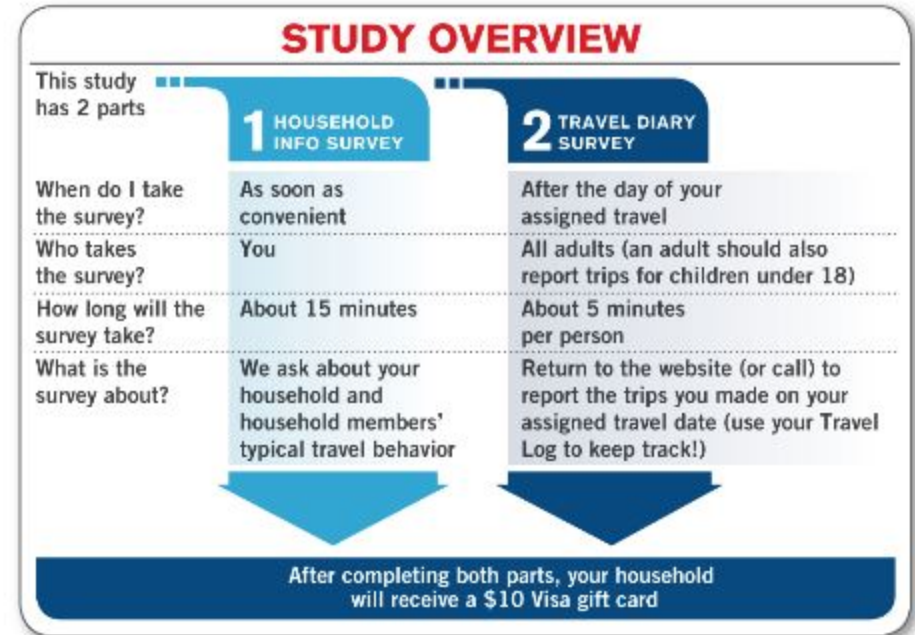
"Conducting this survey will help the Capitol Region gain a better understanding of travel behavior within and outside of our region and work with local elected officials to ensure transportation dollars are spent where they are needed most, to reduce congestion, increase safety, and improve multimodal options in our region — allowing us to sustainably grow and economically prosper." — *Lyle Wray, Executive Director, Capital Region Council of Governments (CRCOG)*

About the Study

The Connecticut Statewide Transportation Study is collecting information about day-to-day household travel activity and typical travel patterns in the state of Connecticut. The study reaches out to state residents to understand how we travel, where we go, why we travel, and how long it takes. This information is vital for the Connecticut Department of Transportation and regional planning agencies to understand how the transportation system is impacted by growth, development and other changes in communities across the [region](#).

The data collected in this study will be used to update the database of household travel behavior and to forecast travel needs into the future. Reliable and viable travel options contribute to the state's quality of life and economic vitality, and this study will help agencies prioritize transportation improvements to support the needs of communities in the future.

For more information about this study, please visit the [FAQs](#) or [contact us](#).



About the Study Region

The Connecticut Statewide Transportation Study region includes the entire state of Connecticut. Connecticut is home to approximately 3 million residents. The state has a diverse economy, including many major employers in government, education, and private industry. In addition to being home to classic Ivy League schools, modern expressways, corporate offices, and small farms, Connecticut identifies as both a New England state and a neighbor to New York City and Boston.

Feedback about transportation needs in local communities will inform how the state maintains and improves this system as the population grows and changes in the coming decades. The study is sponsored by the Connecticut Department of Transportation (CTDOT) in partnership with the Connecticut Transportation Institute at UCONN.



Study FAQs

Frequently Asked Questions About the Study

What is the Connecticut Statewide Transportation Study all about?

The study is collecting information about everyday travel behavior of residents in the state of Connecticut including how we travel, where we go, why we travel, how long it takes, etc.

How was I selected to participate?

Invited households (like yours) were randomly selected from all the residential addresses in the state. The random approach helps us understand the travel needs of all types of households from different regions in the state.

Why should I participate?

Current data about residents' travel characteristics helps the state to understand and plan for current and future transportation needs. It also helps local agencies plan for transportation improvements in your communities. Your responses have a large impact because yours is one of a small number of households invited to participate in the study.

How will the survey results be used?

Information collected in the study will help the Connecticut Department of Transportation plan and prioritize future transportation investments. For example, the information will help answer questions such as, what role can transit, biking and walking play in improving mobility in communities, and how can we improve roadways to more effectively handle increasing traffic and travel demands?

My travel on my assigned day isn't "typical" — should I still participate?

Yes. This study aims to collect travel information on the date assigned to you even if it is not a "typical" travel day. We will separately ask you a few questions about your usual travel habits.

I don't drive or travel very much — should I still participate?

Yes. Whether you only walk or ride transit, don't go anywhere at all, or make a lot of trips, please report what actually happens on your assigned travel date. We want to understand all kinds of travel, regardless of what mode you take or how often you travel.

Who is sponsoring this study?

This study is sponsored by the Connecticut Department of Transportation in partnership with the Connecticut Transportation Institute at UCONN.

How is my personal privacy protected?

All your answers will be kept strictly confidential and will only be analyzed with responses from all other participating households. A copy of the privacy policy for this study is available [here](#).

What are my rights as a participant?

You do not have to be in this study if you do not want to. If you agree to be in the study, but later change your mind, you may drop out at any time. There are no penalties or consequences of any kind if you decide that you do not want to participate, though you will not receive compensation. We will be happy to answer any questions you have about this study. If you have further questions about this study or if you have a research-related problem, you may contact the principal investigator, Dr. Karthik Charan Konduri at kkonduri@engr.uconn.edu. If you have any questions concerning your rights as a research subject, you may contact the UCONN Institutional Review Board (IRB) at 860-486-8802. The IRB is a group of people who review research studies to protect the rights and welfare of study participants. This protocol has been approved by the UCONN IRB, Protocol #H15-307.

What will I get for participating?

As thanks for participating, invited households will receive a \$10 Visa gift card after every person in the household completes the study.

Taking the Survey

What do I use the "Travel Log" for?

The ["Travel Log"](#) can be used to keep track of the details of your trips on the assigned travel date.

Why is my household assigned a specific travel date?

We are asking for information about the travel made by each person in your household on one chosen weekday. We call this your "travel day" or "travel date". This helps us develop a full picture of all the travel that happens across the region and the state on each weekday (even if it is not a "typical" travel day).

What is a trip?

A trip is anytime you travel from one location and stop at a new location. Even if you stop briefly for gas, at an ATM, or to drop a child off at school, travel to that stop counts as one trip, and travel from that stop to the next place counts as a separate trip. If you go out and return to the same place without stopping (such as a jog, bike ride, or leisurely drive) then this counts as two trips: from the starting location to the furthest point you reach, and the trip back to your starting point.

What are some examples of trips?

See below some common trips that people make:

- Drive to work
- Drop your child off at school
- Walk the dog
- Walk your child to a neighbor's
- Bike to the grocery store
- Walk to the bus stop and then ride the bus to the bank
- Carpool to a meeting in New York

Often what we think of as one trip may actually be a chain of several trips. For example, "I picked up my child and stopped to buy gas on my way home from work" counts as **three trips**: 1) a trip from work to your child's activity, 2) a trip from your child's activity to the gas station, and 3) the trip home.

Should my children participate?

Yes, trips to and from school, sports practice, play dates, and other activities help us understand the full nature of how the transportation system is used, and how it can be improved.

Who should be counted as a member of my household?

Everyone who lives in your dwelling unit and shares the kitchen is a part of your household, including family and non-family members.

In the News

Major Series of Transportation Surveys to Begin this Month

Input Needed From Individuals, Organizations & Businesses For Analysis & Accurate Planning of Let's Go CT! Projects: <http://www.ct.gov/dot/cwp/view.asp?A=1373&Q=575914>

DOT conducting transportation surveys

As part of the "Let's Go CT!" plan, the governor's 30-year transportation initiative, the state Department of Transportation has announced a series of transportation surveys: <http://www.hartfordbusiness.com/article/20160119/NEWS01/160119923/dot-conducting-transportation-surveys>

ConnDOT eAlert: News from the Connecticut Department of Transportation

Major Series of Transportation Surveys to Begin this Month: http://cttransportationhr.blogspot.com/2016/01/conndot-ealert-news-from-connecticut_14.html

Connecticut DOT, UConn partner on transportation study for household travel

The Connecticut Transportation Institute (CTI) at the University of Connecticut (UConn) is partnering with the Connecticut Department of Transportation (CTDOT) in conducting a study of trips traveled: <http://www.equipmentworld.com/connecticut-dot-uconn-partner-on-transportation-study-for-household-travel/>

Participate in the Statewide Transportation Study

The Connecticut Statewide Transportation Study is collecting information about everyday transportation choices and travel patterns in the state of Connecticut: <http://www.bikewalkct.org/news/participate-in-the-statewide-transportation-study>

State survey: How do you get around Connecticut?

A new survey by the state Department of Transportation and the University of Connecticut wants to know the trips you've taken on the state's highways, roads, trails and sidewalks: <http://www.ctpost.com/local/article/State-survey-How-do-you-get-around-Connecticut-6895922.php>

DOT: Where are you going?

The intention is not Orwellian in nature, but the state Department of Transportation does want to know where you travel: <http://www.rep-am.com/news/local/947751.txt>

Have Connecticut Transportation Patterns Changed in 40 Years? State Plans to Find Out

The new survey will give researchers a better understanding of how commuters get around the state today: <http://wnpr.org/post/have-connecticut-transportation-patterns-changed-40-years-state-plans-find-out#stream/0>

UConn Led Travel Survey will give state decision makers updated information

A new travel study being conducted by UConn faculty will provide data for the state travel model, updating decades-old information: <http://news.engr.uconn.edu/uconn-led-travel-survey-will-give-state-decision-makers-updated-information.php>

DOT releases transportation survey

Some Connecticut residents will find a survey from the state Department of Transportation in their mailbox, which is being used to gather data to make improvements throughout the state: <http://www.wfsb.com/story/31612488/dot-releases-transportation-survey>

ConnDOT eAlert: News from the Connecticut Department of Transportation

CTDOT and UConn Launch Household Travel Survey: <http://www.aashtojournal.org/Pages/StateDotNewsDetail.aspx?MessageId=37240>

Elm City Cycling Tweet

The Connecticut Statewide Transportation Study is collecting information about everyday transportation choices: <https://twitter.com/elmcitycycling/status/711300448527851520>

South Central Regional Council of Governments Transportation Technical Committee Announcements

The CT Statewide Transportation Study is collecting information about everyday transportation choices and travel patterns in the state: http://www.scrkog.org/documents/Statewide_Household_Travel_Survey_2016.pdf

Southeastern Connecticut Council of Governments "In the News"

Connecticut Statewide Transportation Study seeks information about everyday transportation choices and travel patterns in Connecticut: <http://seccog.org/?publisher=4846312192>

Naugatuck Valley Council of Governments News

Connecticut Statewide Transportation Study is Collecting Information: <http://www.nvcogct.org/news/connecticut-statewide-transportation-study-collecting-information>

Connecticut Metropolitan Council of Governments News

Household Travel Survey: <http://www.ctmetro.org/news/39/194/Household-Travel-Survey/#.VwvEyPkrKUI>



[HOME](#) [ABOUT](#) [REGION](#) [FAQ](#) [NEWS](#) [SPONSORS](#) [PARTICIPATE](#) [CONTACT](#) [PRIVACY](#)

Study Sponsor



Connecticut Department of Transportation (CTDOT)

Study Partner



Connecticut Transportation Institute at UCONN (CTI)

[CONTACT US](#) [PRIVACY STATEMENT](#)

© 2016, RSG, INC. FOR  CTDOT IN PARTNERSHIP WITH THE [UCONN](#) CONNECTICUT TRANSPORTATION INSTITUTE AT UCONN



Participants, don't forget to use your travel log! Download one here: [Download PDF](#)



Participate

Invited households

If you received an invitation to the study, click here to access the survey and enter your password:

[Go to survey](#)

If you have misplaced the invitation with your password, feel free to call (1-844-872-2562) or [email us](#) and we can retrieve it for you.

[Contact us](#)

Want to participate?

If you did not receive an invitation to the study but would like to volunteer to participate, please [contact us](#).





[HOME](#) [ABOUT](#) [REGION](#) [FAQ](#) [NEWS](#) [SPONSORS](#) [PARTICIPATE](#) [CONTACT](#) [PRIVACY](#)

Contact Us

For questions about the study:

Email: help@cttransportationstudy.org

Call toll-free: 1-844-872-2562

Monday to Friday, 9 a.m. to 8 p.m. (ET)

Saturday, 10 a.m. to 4 p.m. (ET)

Or leave a message with the best time and number for us to return your call.

[CONTACT US](#) [PRIVACY STATEMENT](#)

© 2016, RSG, INC. FOR  CTDOT IN PARTNERSHIP WITH THE [UCONN](#) CONNECTICUT TRANSPORTATION INSTITUTE AT UCONN

Resource Systems Group, Inc. Privacy Statement

SUMMARY

- © Resource Systems Group, Inc. 2016 is conducting this study for CTDOT and the Connecticut Transportation Institute at UCONN.
- Resource Systems Group (RSG) will never sell, trade or otherwise share any personal information collected in its surveys with any third party.
- RSG will never spam you, advertise to you or otherwise contact you outside of this survey without your explicit and direct permission.
- Any and all information collected during this survey will only be presented to RSG's clients as part of an aggregate sample. At no time will individual responses be connected to survey takers' personal information.
- During the study, we need your name and contact information in order to reach you, but at the conclusion of the study, this information will be destroyed. Your survey responses will never be sold or shared.

PRIVACY STATEMENT IN DEPTH

We are committed to your privacy and we take it very seriously. This statement is intended to provide you with information and understanding about how Resource Systems Group (RSG) collects and safeguards personal information that is used as part of the firm's market research studies.

ABOUT RSG'S MARKET RESEARCH WORK

RSG conducts market research on behalf of both public and private sector clients using Internet, stand-alone computer, and other data collection means. Ultimately, this research allows our clients to provide you with better products and services that you use on a daily basis. These products and services range from large infrastructure, like rail service and highways, to consumer products, like magazines and cell phones.

THE INFORMATION WE COLLECT AND WHAT WE DO WITH IT

Through independently commissioned surveys, RSG may collect information such as your email address, home or work location, and a variety of demographic information (e.g., gender, age, household income) that will allow us to qualify you for a current survey, tailor survey questions, or ensure we have collected a sample that provides representation across a variety of characteristics. Once you are qualified to participate in a survey, you may be asked to provide additional demographic data, express opinions, and register preferences. The information gathered is aggregated, analyzed, and summarized on behalf of RSG's clients. This information is always presented to clients in summary fashion and never contains any personally identifiable information. Participation in these surveys is completely voluntary, and you therefore have a choice whether or not to disclose this information requested.

INFORMATION COLLECTED TO MAKE YOUR SURVEY EXPERIENCE MORE PLEASANT

During the course of our surveys, we may passively collect information about your Internet browser and computer settings that makes your survey experience more pleasant. In addition to making your survey experience better, we use this information, which does not identify individual users, to analyze trends, to administer the site, and to track users' movements around the site.

CHANGING OR DELETING PERSONAL INFORMATION

If your personal information changes, if you no longer desire to participate in this study, or if you have inquiries or complaints, please contact us via email at help@cttransportationstudy.org

SECURITY

We follow generally accepted industry standards to protect the personal information submitted to us, both during transmission and once we receive it. No method of transmission over the Internet, or method of electronic storage, is 100% secure, however. Therefore, while we strive to use commercially acceptable means to protect your personal information, we cannot guarantee its absolute security.

CHANGES IN THIS PRIVACY STATEMENT

RSG reserves the right to change its privacy policy. These changes will be posted clearly on the firm's websites and other places we deem appropriate so that you are aware of what information we collect, how we use it, and under what circumstances, if any, we disclose it.

LEGAL DISCLAIMER

We reserve the right to disclose your personally identifiable information as required by law, and when we believe that disclosure is necessary to protect our rights and/or to comply with a judicial proceeding, court order, or legal process served on our website.

CONTACT US

If you have any questions or suggestions regarding our privacy policy, please contact us at:

RSG
55 Railroad Row
White River Junction, VT 05001
Email: help@cttransportationstudy.org



CONNECTICUT STATEWIDE

TRANSPORTATION STUDY



Please enter your password below and click "Begin" to start.

Begin

**Thank you
for helping to
improve
transportation
in Connecticut!**



[Privacy](#)

[Contact us](#)

[Travel Log](#)

[Study FAQs](#)