

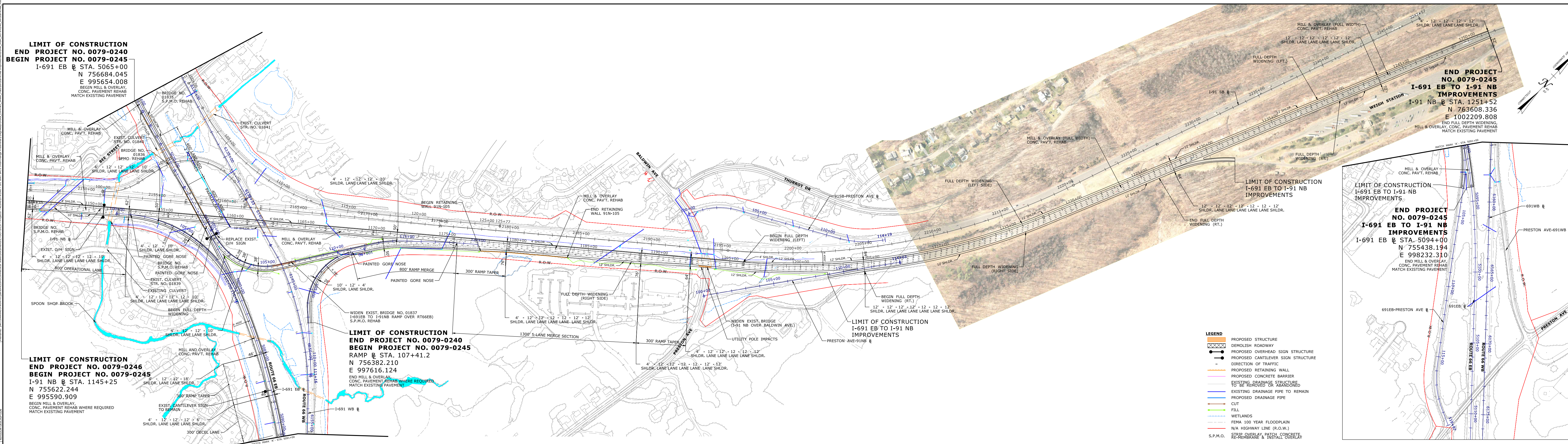
LIMIT OF CONSTRUCTION
END PROJECT NO. 0079-0240
BEGIN PROJECT NO. 0079-0245
 I-691 EB @ STA. 5065+00
 N 756684.045
 E 995654.008
 BEGIN MILL & OVERLAY,
 CONC. PAVT. REHAB
 MATCH EXISTING PAVEMENT

END PROJECT
NO. 0079-0245
I-691 EB TO I-91 NB
IMPROVEMENTS
 I-91 NB @ STA. 1251+52
 N 763608.336
 E 1002209.808
 END FULL DEPTH WIDENING,
 MILL & OVERLAY, CONC. PAVT. REHAB
 MATCH EXISTING PAVEMENT

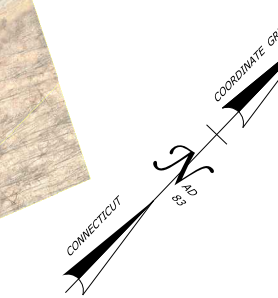
LIMIT OF CONSTRUCTION
END PROJECT NO. 0079-0246
BEGIN PROJECT NO. 0079-0245
 I-91 NB @ STA. 1145+25
 N 755622.244
 E 995590.909
 BEGIN MILL & OVERLAY,
 CONC. PAVT. REHAB WHERE REQUIRED
 MATCH EXISTING PAVEMENT

LIMIT OF CONSTRUCTION
END PROJECT NO. 0079-0240
BEGIN PROJECT NO. 0079-0245
 RAMP @ STA. 107+41.2
 N 756382.210
 E 997616.124
 END MILL & OVERLAY,
 CONC. PAVT. REHAB WHERE REQUIRED
 MATCH EXISTING PAVEMENT

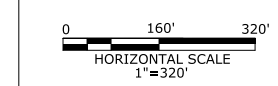
LIMIT OF CONSTRUCTION
 I-691 EB TO I-91 NB
 IMPROVEMENTS
END PROJECT
NO. 0079-0245
I-691 EB TO I-91 NB
IMPROVEMENTS
 I-691 EB @ STA. 5094+00
 N 755438.194
 E 998232.310
 END MILL & OVERLAY,
 CONC. PAVT. REHAB
 MATCH EXISTING PAVEMENT



- LEGEND**
- PROPOSED STRUCTURE
 - DEMOLISH ROADWAY
 - PROPOSED OVERHEAD SIGN STRUCTURE
 - PROPOSED CANTILEVER SIGN STRUCTURE
 - DIRECTION OF TRAFFIC
 - PROPOSED RETAINING WALL
 - PROPOSED CONCRETE BARRIER
 - EXISTING DRAINAGE STRUCTURE TO BE REMOVED OR ABANDONED
 - EXISTING DRAINAGE PIPE TO REMAIN
 - PROPOSED DRAINAGE PIPE
 - CUT
 - FILL
 - WETLANDS
 - FEMA 100 YEAR FLOODPLAIN
 - N/A HIGHWAY LINE (R.O.W.)
 - S.P.M.O.
 - STRIP OVERLAY PATCH CONCRETE, RE-MEMBRANE & INSTALL OVERLAY



PRELIMINARY ENGINEERING REVIEW



I-91/I-691/ROUTE 15
 INTERCHANGE IMPROVEMENTS
 CITIES OF MERIDEN AND MIDDLETOWN, CT

PROJECT NO. 0079-0245
 DRAWING TITLE:
 I-691EB TO I-91NB IMPROVEMENTS
 HIGHWAY PLAN - 1

DRAWING NO. 691EB-91NB
 HWY-01
 SHEET NO.