

Project Description
State Project No. 0057-0123
F.A.P. (PE) No. 0395(017)
Rehabilitation of Bridge No. 00293
Interstate 395 over Bishop Crossing Road
In the of town Griswold

Project Location: The project is located at mile post 24.77 of Interstate 395 in the Town of Griswold.

Project Purpose: Bridge No. 00293 was built in 1958 and reconstructed in 1992. The bridge consists of a three-span reinforced concrete slab, simply supported steel girders, and reinforced concrete abutments and piers. The overall length of the bridge is 137 feet and the curb-to-curb width is 102.17 feet. The superstructure is rated “Poor” (4) according to the most recent Inspection Report due to large areas of deterioration on the girders with section loss as high as 80% and shear loss up to 24%.

Project Description: The scope of this project is a full replacement of Bridge No.00293. The proposed structure is a single span steel girder superstructure with curb-to-curb width of 102.17 feet and a span length of 68 feet. The superstructure will be supported on GRS-IBS abutments.

Project Duration: The construction phase is anticipated to take two seasons.

Utilities: Telephone and electrical lines are attached to the bottom flanges of the girders and need to be relocated. Location of relocated utilities is TBD.

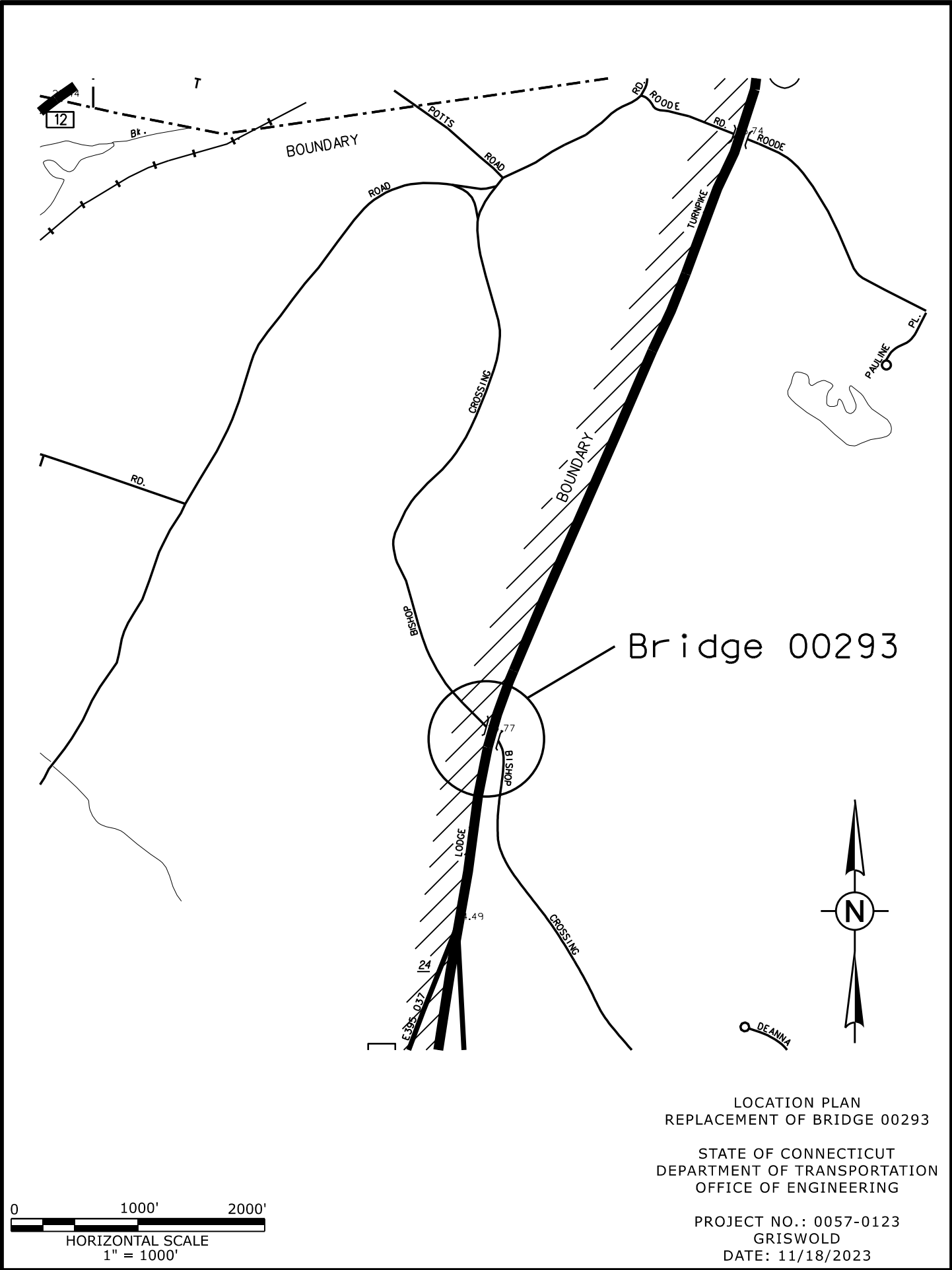
Maintenance and Protection of Traffic: The bridge carries I-395 southbound and northbound traffic with an AADT₂₀₂₀ of 30,000. It is anticipated that a crossover with one-lane traffic in each direction will be maintained during construction.

Schedule:

FDP: May 28, 2025

ADV: August 06, 2025

Anticipated Construction Start: Spring 2026

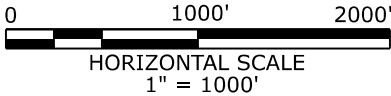


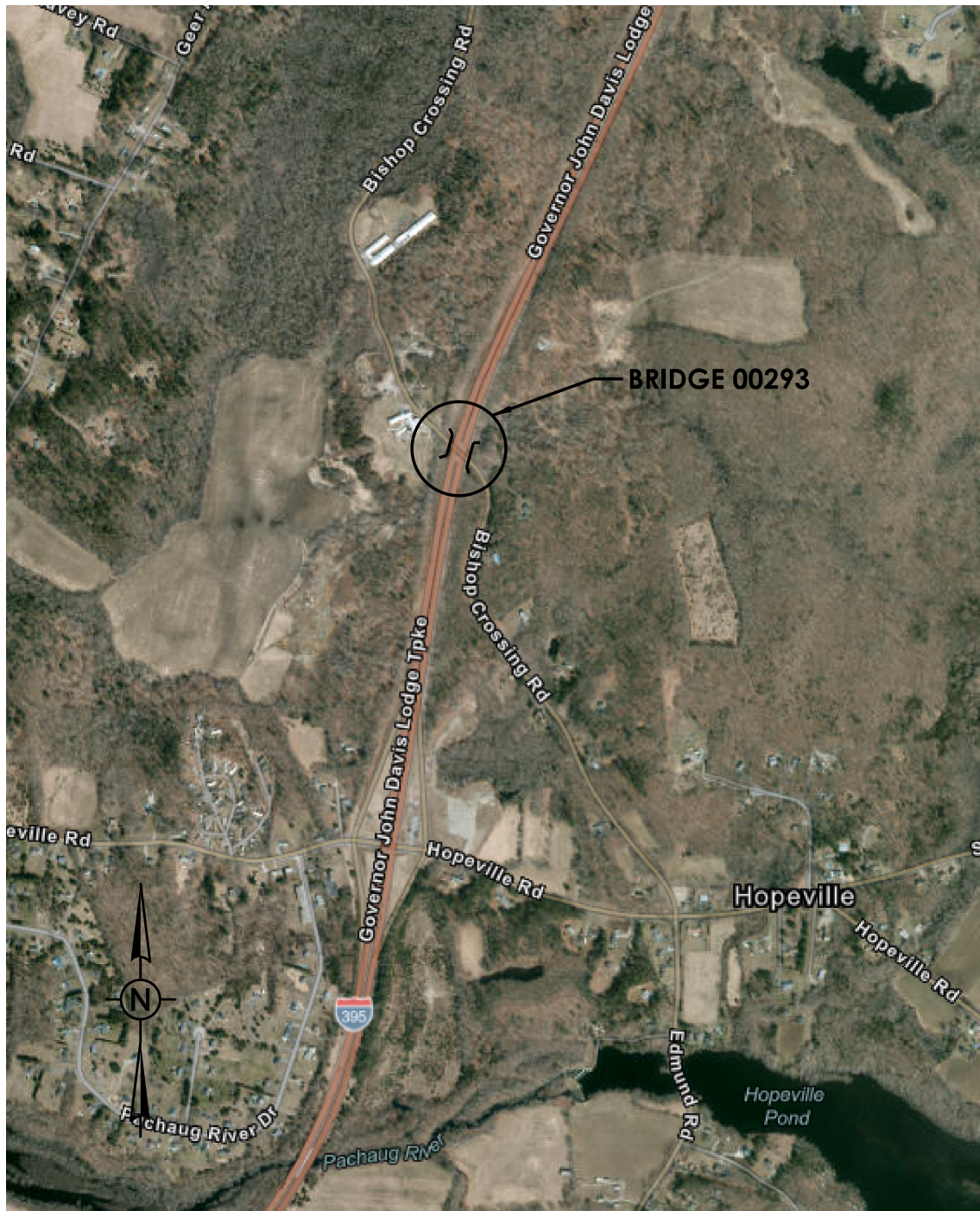
Bridge 00293

LOCATION PLAN
REPLACEMENT OF BRIDGE 00293

STATE OF CONNECTICUT
DEPARTMENT OF TRANSPORTATION
OFFICE OF ENGINEERING

PROJECT NO.: 0057-0123
GRISWOLD
DATE: 11/18/2023





LOCATION PLAN
REPLACEMENT OF BRIDGE 00293

STATE OF CONNECTICUT
DEPARTMENT OF TRANSPORTATION
OFFICE OF ENGINEERING

PROJECT NO.: 0057-0123
GRISWOLD
DATE: 11/18/2022