

**CONNECTICUT DEPARTMENT OF TRANSPORTATION
ROUTE 218 CTSS REPLACEMENT
TOWN OF BLOOMFIELD
STATE PROJECT NO. 0011-0160**

Project Description:

The project limits on Route 218 are from Cigna Way/Bay Hill Drive (Int. No. 011-224 to the west) to Granby Street (Int. No. 011-233 to the east). This project will provide full replacement of the traffic signal equipment and new fiber optic interconnect at eight intersections within the Route 218 corridor. The replacement of the CTSS communications system will establish reliable fiber optic communication connections between the signalized intersections with wireless communications back to the CTDOT's Newington Administration building and will allow for the implementation of advanced technologies to monitor traffic and reduce travel times. Specifically, the CTSS Components of the project will entail:

- Advanced traffic signal controllers to provide updated traffic signal and data collection functionality.
- Fiber optic interconnect among all project intersections to provide reliable, high bandwidth communications.
- Upgrade wireless communications back to the CTDOT's central traffic signal control software.

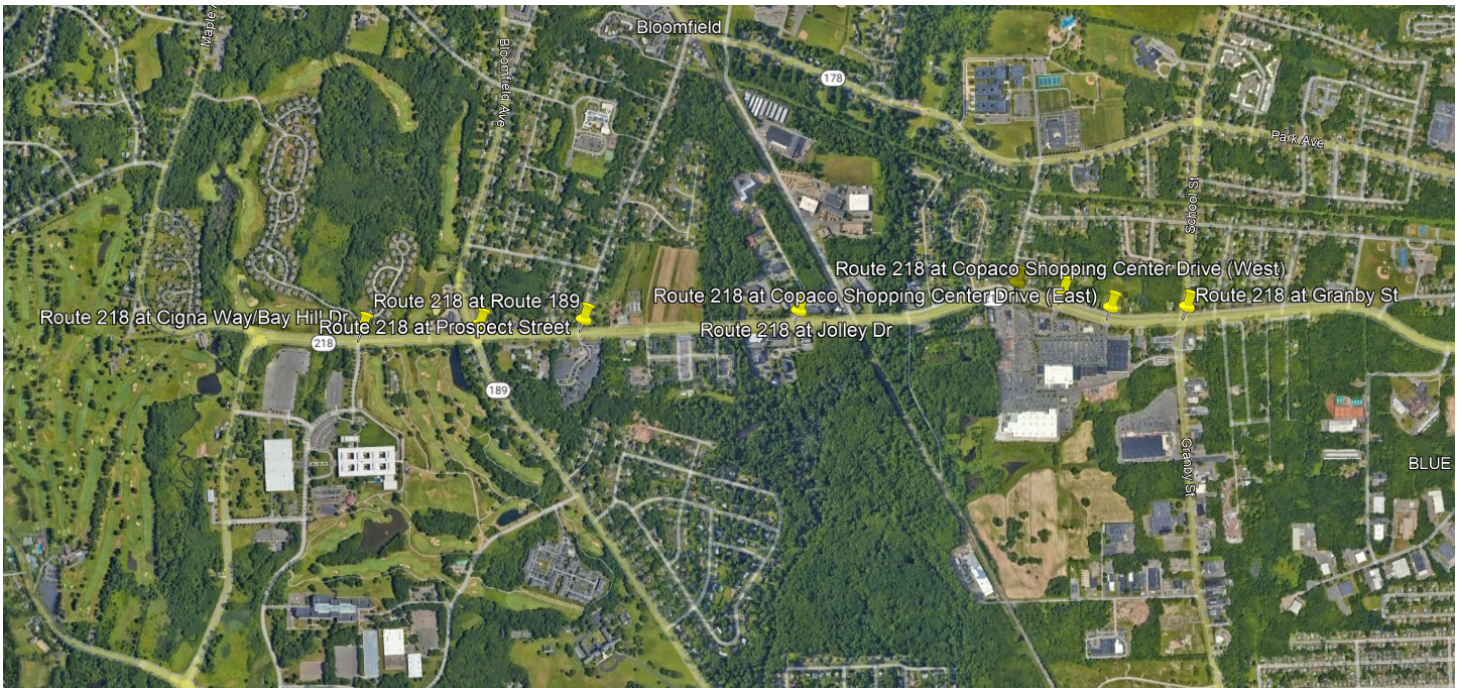
Traffic signal equipment/components such as span poles/mast arms, signal heads, signage, pre-emption, and detection will be upgraded to the latest standards. Where applicable, pedestrian control features will be upgraded or installed to include accessible pedestrian signals (APS) with pushbuttons and countdown signal heads. The project also incorporates (as needed) construction/reconstruction of curb ramps, blended transitions, sidewalk extensions, landing areas, detectable warning surfaces, realignment of skewed crosswalk pavement markings and associated adjustments to stop bars and detection zones, review of signal timings (including clearance intervals, pedestrian timings, and coordination information where applicable). All work will be designed to stay within the limits of the existing right-of-way where possible. However, construction and/or permanent easements may be needed for signal appurtenances and/or sidewalk ramps.

Purpose and Need Statement:

The purpose of this project is to replace the aging traffic signal infrastructure along the Route 218 corridor in the Town of Bloomfield, as needed for a state of good repair, by replacing the existing Computerized Traffic Signal System (CTSS).

The project will consist of the following locations:

City/Town	Location Description
Bloomfield	CT Route 218 at Cigna Way/Bay Hill Drive (Int. No. 011-224)
	CT Route 218 at CT Route 189 (Int. No. 011-218)
	CT Route 218 at Prospect Street (Int. No. 011-238)
	CT Route 218 at Jolley Drive (Int. No. 011-244)
	CT Route 218 at Tyler Street (Int. No. 011-230)
	CT Route 218 at Copaco Shopping Center Drive (West) (Int. No. 011-231)
	CT Route 218 at Copaco Shopping Center Drive (East) (Int. No. 011-232)
	CT Route 218 at Granby Street (Int. No. 011-233)



Project Location Map