



DEPARTMENT OF TRANSPORTATION

# APPENDICES

Statewide Computerized Traffic Signal Systems  
Needs Assessment

---



# APPENDICES

The appendices section presents detailed background information used to support the recommendations made by the Needs Assessment Team for Computerized Traffic Signal Systems (CTSS).

## **APPENDIX A – Existing Conditions:**

Appendix A presents the current location of statewide CTSS devices and available information on when CTSS system timing plans were last accessed.

- **Appendix A-1:** The location of existing CTSS is shown in the state map of Connecticut.
- **Appendix A-2:** A table of “CTSS File History by Planning Region”. This table presents time stamp information on when the CTSS was last accessed. The timestamp information serves as proxy information related to when the last time timing information was updated for many systems.

## **APPENDIX B – Needs Assessment Priority Listing Recommendations:**

Appendix B summarizes the priority listing recommendations identified by the Needs Assessment Team. The Needs Assessment Team identified three major types of improvements to the statewide CTSS devices. The recommended major improvements are replacement of existing obsolete CTSS, addition of new CTSS, and retiming of existing CTSS.

- **Appendix B-1:** Statewide CTSS Replacement Priority Listing
- **Appendix B-2:** CTSS Replacement Priority Listing by Region
- **Appendix B-3:** Statewide Retrofitted Listing
- **Appendix B-4:** Proposed New CTSS Priority Listing
- **Appendix B-5:** CTSS Retiming Priority Listing by Region

## **APPENDIX C – Needs Assessment Priority Listing Recommendations by Region:**

Appendix C presents the same information as Appendix B, but organized by region.

- **Appendix C-1:** Capitol Region
- **Appendix C-2:** South Central Region
- **Appendix C-3:** Greater Bridgeport Region
- **Appendix C-4:** Western Connecticut Region
- **Appendix C-5:** Southeastern Connecticut Region
- **Appendix C-6:** Naugatuck Valley Region
- **Appendix C-7:** Lower Connecticut Valley Region
- **Appendix C-8:** Northwest Hills Region
- **Appendix C-9:** Northeastern Connecticut Region

## **APPENDIX D**

Active projects with CTSS November-2015: This appendix presents a list of all projects associated with CTSS currently in pre-bid, planning, design, or construction stage as of November 2015. Planning Regions and ConnDOT could use the CTSS Needs Assessment Priority Listing with the information in this appendix to determine if improvements can be made as part of these projects.

## **APPENDIX E – Federal Regulations:**

This appendix presents the Federal Regulations to which all CTSS projects that obtain federal funding must conform.

## **APPENDIX F – Resources:**

This appendix presents the list of reference material used in the processes of developing this needs assessment.



# ACRONYM LIST AND NOTE ON TERMINOLOGY

<b>ATMS</b>	Advanced Transportation Management Systems
<b>CFR</b>	Code of Federal Regulations
<b>CMAQ</b>	Congestion Mitigation and Air Quality
<b>ConnDOT</b>	Connecticut Department of Transportation
<b>COTS</b>	Commercial off-the-shelf
<b>CRCOG</b>	Capitol Region Council of Governments
<b>CTSS</b>	Computerized Traffic Signal Systems
<b>FHWA</b>	Federal Highway Administration
<b>FY</b>	Fiscal Year
<b>GBRC</b>	Greater Bridgeport Regional Council
<b>HOC</b>	Highway Operations Center
<b>HQ</b>	Headquarters
<b>ITS</b>	Intelligent Transportation Systems
<b>MOE</b>	Measure of Effectiveness
<b>NECOG</b>	Northeastern Connecticut Council of Governments
<b>NHS</b>	National Highway System
<b>NHCOG</b>	Northwest Hills Council of Governments
<b>NHPP</b>	National Highway Performance Program
<b>NVCOG</b>	Naugatuck Valley Council of Governments
<b>PM</b>	Project Manager
<b>PE</b>	Preliminary Engineering
<b>PS&amp;E</b>	Plans, Specifications, & Estimates
<b>RIVERCOG</b>	Lower Connecticut River Valley Council of Governments
<b>SAFETEA-LU</b>	Safe, Accountable, Flexible, Efficient Transportation Equity Act: A Legacy for Users

# ACRONYM LIST AND NOTE ON TERMINOLOGY

<b>SCRCOG</b>	South Central Connecticut Council of Governments
<b>SE</b>	Systems Engineering
<b>SEAFORM</b>	Systems Engineering Analysis FORM
<b>SECCOG</b>	Southeastern Connecticut Council of Governments
<b>SEMP</b>	Systems Engineering Management Plan
<b>STIP</b>	State Transportation Improvement Program
<b>STP</b>	Surface Transportation Program
<b>WCCOG</b>	Western Connecticut Council of Governments



DEPARTMENT OF TRANSPORTATION

APPENDIX A:

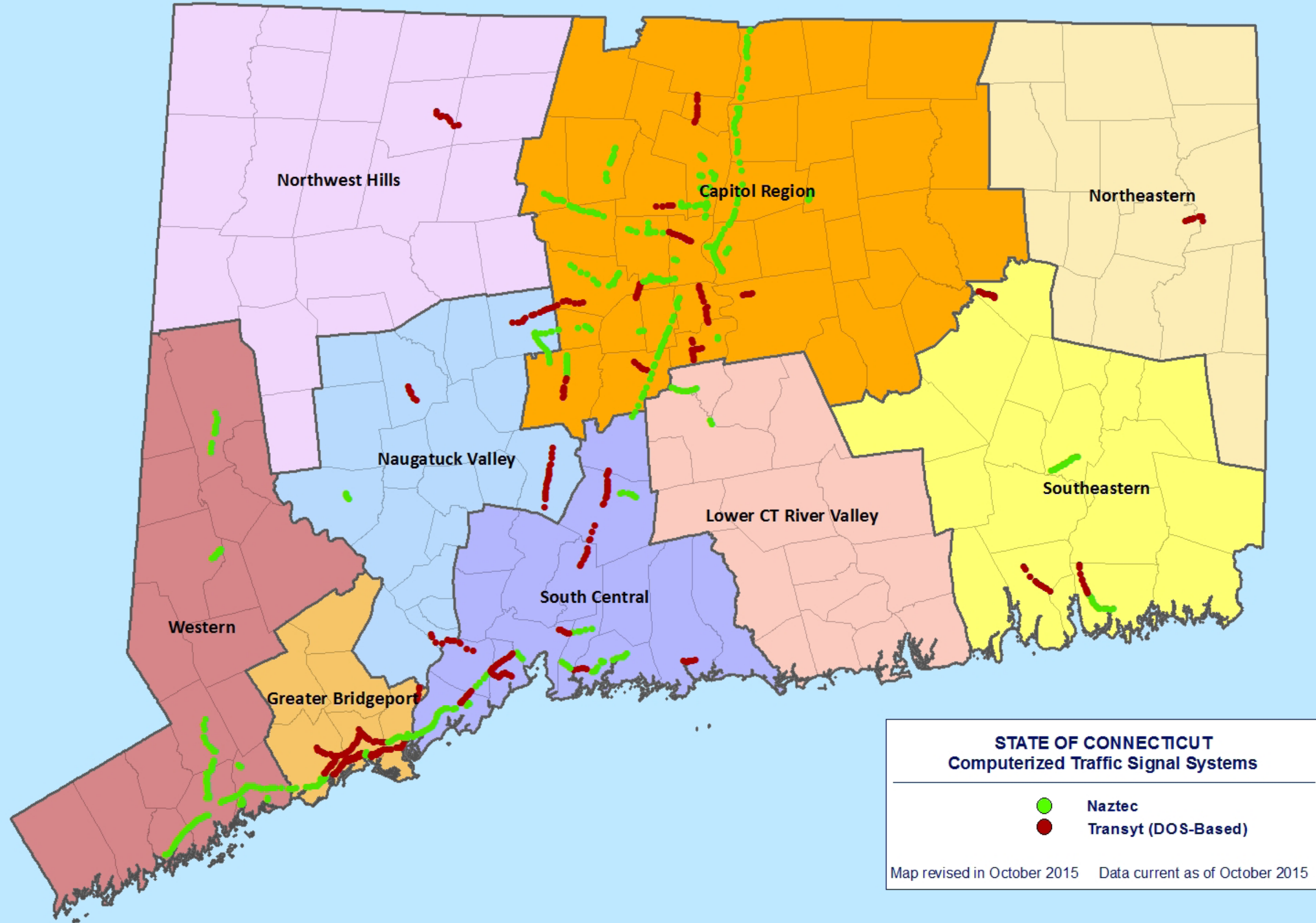
EXISTING CONDITIONS

---





# APPENDIX A-1: STATE OF CONNECTICUT CTSS LOCATION MAP





# APPENDIX A-2: CTSS FILE HISTORY BY PLANNING REGION

CAPITOL REGION			
Town / System Number / Rte / Master	Excel Cover Sheets Last Modified	TSDWIN Last Modified	# of Intersections
Avon / Simsbury Naztec System 33 Rte 44 (385M)	3/8/2010	9/24/2003	14
Berlin Transyt System 26 Rte 372 (3523M)	11/24/2010	4/8/1998	6
Bloomfield Transyt System 10 Rte 218 (2531M)	2/23/2010	9/11/2003	6
Canton Naztec System 19 Rte 44 (315M)	1/18/2012	5/23/1996	8
East Hartford Naztec System 22 Rte 5 South End (118M)	8/28/2014	10/20/2003	12
East Hartford Naztec System 26 Rte 5 Burnside (012M)	7/26/2012	9/11/2003	5
East Hartford Naztec System 32 Rte 518 Pratt System (933M)	10/4/2012	9/30/2003	3
East Hartford Naztec System 47 Rte 44 Blacksmith Section (605M)	7/9/2008	N/A	3
East Hartford / South Windsor Naztec System 28 Rte 5 (132M)	5/4/2004	9/11/2003	15
East Windsor Naztec System 39 Rte 140 (559M)	1/22/2009	N/A	3
East Windsor Naztec System 50 Rte 5 (500M)	12/8/2014	N/A	11
Enfield Naztec System 49 Rte 5 Post Office Area (475M)	9/7/2012	N/A	6
Enfield Naztec System 51 Rte 5 North Section (515M)	7/7/2008	N/A	10
Farmington Naztec System 30 Rte 4 South Road Section (355M)	8/8/2012	N/A	7
Farmington Naztec System 45 Rte 4 (530M)	9/21/2012	N/A	7
Farmington Transyt System 13 Rte 6 (3109M)	12/30/2002	11/1/1995	6
Farmington / West Hartford Transyt System 54 Rte 71 (4737M)	1/30/2015	11/18/1997	10
Glastonbury Transyt System 8 Rte 94 (2025M)	3/9/2004	9/11/2003	5
Hartford Naztec System 70 Bus-Way (190M)	7/7/2015	7/7/2015	3
Hartford Transyt System 45 Rte 44 (4006M)	8/3/2012	6/19/1996	15
New Britain Naztec System 18 Rte 174 (043M)	5/4/2012	7/24/2002	4
Newington / Berlin / Meriden Naztec System 15 Rte 15 Sth Turnpike (798M)	11/5/2014	11/4/2014	21
Newington / Wethersfield Naztec System 16 Rte 15 Nth Turnpike (831M)	9/9/2008	5/5/2005	8
Plainville Naztec System 9 Rte 372 (286M)	11/28/2011	11/13/2001	5
Rocky Hill Naztec System 64 Rte 99 (732M)	1/14/2015	N/A	2
Rocky Hill Transyt System 1 Rte 3 (1801M)	4/22/2014	11/5/2003	12
Rocky Hill / Wethersfield Transyt System 24 Rte 99 (2137M)	11/26/2001	9/29/1998	6
Simsbury Naztec System 55 Rte 10 & 202 South End (566M)	6/24/2008	N/A	4
Simsbury Naztec System 56 Rte 10 & 202 North End (575M)	6/23/2008	N/A	8
Southington Naztec System 31 Rte 10 (170M)	9/25/2014	5/23/2003	12
Southington Transyt System 39 Rte 10 (3939M)	11/28/2007	10/7/1998	9
Vernon Naztec System 61 Rte 83 (645M)	9/27/2010	7/1/2015	7
West Hartford Naztec System 37 Rte 71, 173, 84 (450M)	6/3/2015	N/A	8
West Hartford Naztec System 38 Rte 529, 173 (485M)	8/15/2014	N/A	9
West Hartford Naztec System 46 Rte 44 (542M)	6/25/2008	N/A	12
Wethersfield Transyt System 25 Rte 99 (2109M)	6/10/2013	6/4/1997	8
Windsor Naztec System 24 Rte 159 (090M)	10/24/2011	9/24/1998	16
Windsor Naztec System 41 Rte 178 V61 (910M)	7/8/2008	N/A	2
Windsor Naztec System 54 Rte 305 (621M)	7/9/2008	N/A	5
Windsor Naztec System 57 Rte 75 (655M)	2/23/2012	N/A	6
Windsor / Bloomfield Naztec System 23 Rte 218 (115M)	8/16/2012	10/8/2002	10
Windsor Locks Transyt System 48 Rte 75 (3803M)	7/30/2002	2/11/1998	9

<b>Total Number of Transyt Systems</b>	11
<b>Total Number of Naztec Systems</b>	31
<b>Total Number of Systems</b>	42
<b>Total Number of Intersections</b>	338

# APPENDIX A-2: CTSS FILE HISTORY BY PLANNING REGION

SOUTH CENTRAL REGION			
Town / System Number / Rte / Master	Excel Cover Sheets Last Modified	TSDWIN Last Modified	# of Intersections
Branford Naztec System 6 Rte 1 West End (020M)	3/22/2010	10/22/1997	2
Branford Naztec System 7 Rte 1 East End (032M)	8/8/2007	10/22/1997	5
Branford Naztec System 66 Rte 1 Alps Road (061M)	11/21/2014	N/A	6
Branford Naztec System 59 Rte 1 Cherry Hill (665M)	1/10/2011	N/A	4
Branford Transyt 34 System Rte 1 (2903M)	1/16/2014	10/8/1999	5
Derby / Orange Transyt Sytem 50 Rte 34 (1015M)	8/13/2007	10/22/1997	11
East Haven Naztec System 52 Rte 1 (001M)	8/8/2007	N/A	2
East Haven Naztec System 11 Rte 80 (700M)	7/10/2008	N/A	5
East Haven Naztec System 65 Rte 1 & 142 (069M)	10/10/2012	N/A	3
Guilford Transyt System 27 Rte 1 (3309M)	12/17/2013	10/19/1995	7
Meriden / Wallingford Transyt System 47 Rte 5 (4235M)	5/9/2011	10/29/2003	17
Milford Naztec System 2 Rte 1 Home Acres (037M)	6/28/2012	9/25/2002	3
Milford Naztec System 20 Rte 1 West End (075M)	7/6/2012	10/17/1995	13
Milford Naztec System 21 Rte 1 Center Section (051M)	7/16/2007	10/7/1996	8
Milford Naztec System 36 Rte 708 (185M)	11/19/2004	4/15/2004	3
Milford Transyt System 30 Rte 1 (936M)	11/24/2010	3/3/2004	10
New Haven Naztec System 67 Rte 10 (746M)	N/A	N/A	4
New Haven Transyt System 49 Rte 80 (3099M)	4/30/2014	12/22/1997	7
North Haven / Wallingford Transyt System 46 Rte 5 (4202M)	6/22/2015	4/24/1998	10
Orange Naztec System 42 Rte 1 (588M)	7/8/2008	N/A	4
Orange / West Haven Transyt System 57 Rte 1 (1013M)	4/8/2015	8/28/2003	14
Orange / West Haven Transyt System 37 Rte 162 (1124M)	3/27/2014	12/2/2003	13
Wallingford Naztec System 35 Rte 68 (415M)	7/13/2007	1/25/2005	7

<b>Total Number of Transyt Systems</b>	9
<b>Total Number of Naztec Systems</b>	14
<b>Total Number of Systems</b>	23
<b>Total Number of Intersections</b>	163

GREATER BRIDGEPORT REGION			
Town / System Number / Rte / Master	Excel Cover Sheets Last Modified	TSDWIN Last Modified	# of Intersections
Bridgeport Transyt System 16 Rte 130 (745M)	5/23/2014	12/29/1999	22
Bridgeport Transyt System 17 Rte 130 (721M)	8/8/2014	9/25/1995	12
Bridgeport Naztec System 69 Steel Point (736M)	N/A	N/A	7
Bridgeport / Fairfield Transyt System 3 Rte 1 (712M)	7/30/2007	10/19/1995	8
Bridgeport / Stratford Transyt System 31 Rte 1 (731M)	3/10/2014	7/16/2007	25
Bridgeport / Stratford Transyt System 19 Rte 130 (831M)	6/10/2014	7/5/2007	21
Fairfield Naztec System 10 Rte 1 (297M)	1/14/2015	4/23/1998	14
Fairfield Transyt System 29 Rte 1 (618M)	3/3/2014	9/4/1998	11
Fairfield Transyt System 14 Rte 58 (640M)	4/21/2003	3/25/1997	12
Fairfield / Westport Naztec System 53 Rte 1 (710M)	4/28/2014	6/26/2007	4
Stratford Naztec System 13 Rte 1 East End (160M)	7/30/2007	6/28/2007	9
Stratford Naztec System 17 Rte 1 West End (150M)	9/4/2008	4/16/2001	8
Stratford Transyt System 23 Rte 110 (809M)	2/2/2012	11/26/1996	6

<b>Total Number of Transyt Systems</b>	8
<b>Total Number of Naztec Systems</b>	5
<b>Total Number of Systems</b>	13
<b>Total Number of Intersections</b>	159

# APPENDIX A-2: CTSS FILE HISTORY BY PLANNING REGION

WESTERN CT REGION			
Town / System Number / Rte / Master	Excel Cover Sheets Last Modified	TSDWIN Last Modified	# of Intersections
Danbury Naztec System 34 Rte 806 (403M)	10/10/2014	10/21/2003	9
Darien Naztec System 3 Rte 1 (200M)	12/20/2014	11/19/1999	10
Darien Naztec System 48 Rte 1 Rings End Road (613M)	12/20/2014	2/5/1996	4
New Milford Naztec System 43 Rte 7 (465M)	4/10/2014	N/A	10
Norwalk Naztec System 4 Rte 1 West End (214M)	9/17/2012	11/22/1999	16
Norwalk Naztec System 5 Rte 1 East End (234M)	3/29/2010	9/18/2003	9
Norwalk / Wilton Naztec System 29 Rte 7 (328M)	4/30/2012	7/5/2005	24
Westport Naztec System 68 Rte 33 @ Merritt (025M)	N/A	N/A	3
Westport Naztec System 44 Rte 476 (600M)	1/23/2013	N/A	2
Westport Naztec System 8 Rte 1 West End (250M)	1/15/2013	8/11/1997	12
Westport Naztec System 25 Rte 1 Sherwood Area (266M)	12/14/2011	N/A	8
Westport Naztec System 62 Rte 136 (673M)	5/3/2011	N/A	6
Wilton Naztec System 60 Rte 7 (718M)	2/5/2013	7/7/2005	10

<b>Total Number of Transyt Systems</b>	0
<b>Total Number of Naztec Systems</b>	13
<b>Total Number of Systems</b>	13
<b>Total Number of Intersections</b>	123

## OTHER REGIONS

NAUGATUCK VALLEY REGION			
Town / System Number / Rte / Master	Excel Cover Sheets Last Modified	TSDWIN Last Modified	# of Intersections
Bristol Transyt System 44 Rte 6 (1618M)	6/21/2011	12/8/1997	17
Bristol / Plainville Naztec System 63 Rte 72 & 229 (630M)	3/3/2004	3/3/2004	10
Bristol / Southington Naztec System 14 Rte 229 (277M)	3/1/2013	3/12/2001	9
Cheshire Transyt System 12 Rte 10 (2819M)	9/25/2014	2/13/1997	19
Southbury Naztec System 40 Rte 6 (427M)	4/1/2009	N/A	5
Watertown Transyt System 15 Rte 63 (2201M)	7/18/2008	11/3/1997	6

NORTHWEST HILLS REGION			
Town / System Number / Rte / Master	Excel Cover Sheets Last Modified	TSDWIN Last Modified	# of Intersections
Winchester Transyt System 51 Rte 44 (4413M)	3/31/2010	4/4/1998	9

LOWER CT RIVER VALLEY REGION			
Town / System Number / Rte / Master	Excel Cover Sheets Last Modified	TSDWIN Last Modified	# of Intersections
Cromwell Naztec System 1 Rte 372 (437M)	3/10/2010	7/2/2007	11
Middletown Naztec System 12 Rte 9 (008M)	7/22/2003	10/23/1995	2

# APPENDIX A-2: CTSS FILE HISTORY BY PLANNING REGION

NORTHEASTERN CT REGION			
Town / System Number / Rte / Master	Excel Cover Sheets Last Modified	TSDWIN Last Modified	# of Intersections
Brooklyn / Killingly Transyt System 11 Rte 6 & 12 (2602M)	6/10/2014	11/27/2002	9

SOUTHEASTERN CT REGION			
Town / System Number / Rte / Master	Excel Cover Sheets Last Modified	TSDWIN Last Modified	# of Intersections
Groton Naztec System 27 Rte 1 (365M)	12/17/2002	10/18/2002	14
Groton Transyt System 42 Rte 12 (1440M)	10/21/2014	12/2/2003	10
Norwich Naztec System 58 Rte 82 (682M)	9/29/2009	N/A	15
Waterford Transyt System 53 Rte 85 (3914M)	7/30/2014	1/29/1998	10
Windham Transyt System 55 Rte 66 (4804M)	2/28/2001	12/15/1999	14

<b>Total Number of Transyt Systems</b>	8
<b>Total Number of Naztec Systems</b>	7
<b>Total Number of Systems</b>	15
<b>Total Number of Intersections</b>	160

STATEWIDE TOTALS	
<b>Total Number of Transyt Systems</b>	36
<b>Total Number of Naztec Systems</b>	70
<b>Total Number of Systems</b>	106
<b>Total Number of Intersections</b>	943



DEPARTMENT OF TRANSPORTATION

## APPENDIX B:

# NEEDS ASSESSMENT PRIORITY LISTING RECOMMENDATIONS - STATEWIDE

---





# APPENDIX B-1: STATEWIDE CTSS REPLACEMENT PRIORITY LISTING

Town / System Number / Rte / Master	Rank	Installation Date
Rocky Hill Transyt System 1 Rte 3 (1801M)	1	1990
Branford Transyt 34 System Rte 1 (2903M)	2	1994
Stratford Transyt System 23 Rte 110 (809M)	3	1993
Bloomfield Transyt System 10 Rte 218 (2531M)	4	1993
Rocky Hill / Wethersfield Transyt System 24 Rte 99 (2137M)	5	1995
Wethersfield Transyt System 25 Rte 99 (2109M)	5	1994
Fairfield Transyt System 29 Rte 1 (618M)	6	1993
Derby / Orange Transyt Sytem 50 Rte 34 (1015M)	7	1995
Cheshire Transyt System 12 Rte 10 (2819M)	8	1994
Milford Transyt System 30 Rte 1 (936M)	9	1993
Orange / West Haven Transyt System 57 Rte 1 (1013M)	10	1996
Windsor Locks Transyt System 48 Rte 75 (3803M)	11	1996
Bridgeport / Stratford Transyt System 31 Rte 1 (731M)	12	1993
Bridgeport / Fairfield Transyt System 3 Rte 1 (712M)	13	1992
Farmington Transyt System 13 Rte 6 (3109M)	14	1994
Bridgeport / Stratford Transyt System 19 Rte 130 (831M)	15	1996
Meriden / Wallingford Transyt System 47 Rte 5 (4235M)	16	1997
North Haven / Wallingford Transyt System 46 Rte 5 (4202M)	16	1997
Bristol Transyt System 44 Rte 6 (1618M)	17	1997
Bridgeport Transyt System 16 Rte 130 (745M)	18	1997
Bridgeport Transyt System 17 Rte 130 (721M)	18	1993
Orange / West Haven Transyt System 37 Rte 162 (1124M)	19	1996
Glastonbury Transyt System 8 Rte 94 (2025M)	20	1994
Southington Transyt System 39 Rte 10 (3939M)	21	1995
Farmington / West Hartford Transyt System 54 Rte 71 (4737M)	22	1996
New Haven Transyt System 49 Rte 80 (3099M)	23	1995
Fairfield Transyt System 14 Rte 58 (640M)	24	1994
Guilford Transyt System 27 Rte 1 (3309M)	25	1994
Berlin Transyt System 26 Rte 372 (3523M)	26	1996
Waterford Transyt System 53 Rte 85 (3914M)	27	1996
Groton Transyt System 42 Rte 12 (1440M)	28	1995
Brooklyn / Killingly Transyt System 11 Rte 6 & 12 (2602M)	29	1993
Windham Transyt System 55 Rte 66 (4804M)	30	1998
Winchester Transyt System 51 Rte 44 (4413M)	31	1995
Watertown Transyt System 15 Rte 63 (2201M)	32	1994

NOTE 1: SAME RANK INDICATES WORK ON SYSTEMS TO BE DONE AT THE SAME TIME

<b>Fairfield Naztec System 10 Rte 1 (297M)</b>	<b>1</b>
<b>Darien Naztec System 3 Rte 1 (200M)</b>	<b>2</b>
<b>Norwalk Naztec System 4 Rte 1 West End (214M)</b>	<b>3</b>
<b>Norwalk Naztec System 5 Rte 1 East End (234M)</b>	<b>4</b>

NOTE 2 (\*): RANK FOR RETROFITTED CABINETS THAT NEEDS REPLACEMENT

<b>Total Number of Transyt Systems</b>	35
<b>Total Number of Naztec Systems</b>	4
<b>Total Number of Systems</b>	39

Note that this prioritization represents a snapshot in time. As projects progress and are deployed, as needs evolve, as opportunities present themselves, it is expected that this prioritization list will change over time.

# APPENDIX B-2: CTSS REPLACEMENT PRIORITY LISTING BY REGION

CAPITOL REGION	
Town / System Number / Rte / Master	Rank
Rocky Hill Transyt System 1 Rte 3 (1801M)	1
Bloomfield Transyt System 10 Rte 218 (2531M)	2
Rocky Hill / Wethersfield Transyt System 24 Rte 99 (2137M)	3
Wethersfield Transyt System 25 Rte 99 (2109M)	3
Windsor Locks Transyt System 48 Rte 75 (3803M)	4
Farmington Transyt System 13 Rte 6 (3109M)	5
Glastonbury Transyt System 8 Rte 94 (2025M)	6
Southington Transyt System 39 Rte 10 (3939M)	7
Farmington / West Hartford Transyt System 54 Rte 71 (4737M)	8
Berlin Transyt System 26 Rte 372 (3523M)	9

*NOTE 1: SAME RANK INDICATES WORK ON SYSTEMS TO BE DONE AT THE SAME TIME*

<b>Total Number of Transyt Systems Per Region</b>	<b>10</b>
<b>Total Number of Naztec Systems Per Region</b>	<b>0</b>
<b>Total Number of Systems per Region</b>	<b>10</b>

SOUTH CENTRAL REGION	
Town / System Number / Rte / Master	Rank
Branford Transyt 34 System Rte 1 (2903M)	1
Derby / Orange Transyt Sytem 50 Rte 34 (1015M)	2
Milford Transyt System 30 Rte 1 (936M)	3
Orange / West Haven Transyt System 57 Rte 1 (1013M)	4
Meriden / Wallingford Transyt System 47 Rte 5 (4235M)	5
North Haven / Wallingford Transyt System 46 Rte 5 (4202M)	5
Orange / West Haven Transyt System 37 Rte 162 (1124M)	6
New Haven Transyt System 49 Rte 80 (3099M)	7
Guilford Transyt System 27 Rte 1 (3309M)	8

*NOTE 1: SAME RANK INDICATES WORK ON SYSTEMS TO BE DONE AT THE SAME TIME*

<b>Total Number of Transyt Systems Per Region</b>	<b>9</b>
<b>Total Number of Naztec Systems Per Region</b>	<b>0</b>
<b>Total Number of Systems per Region</b>	<b>9</b>

GREATER BRIDGEPORT REGION	
Town / System Number / Rte / Master	Rank
Stratford Transyt System 23 Rte 110 (809M)	1
Fairfield Transyt System 29 Rte 1 (618M)	2
Bridgeport / Stratford Transyt System 31 Rte 1 (731M)	3
Bridgeport / Fairfield Transyt System 3 Rte 1 (712M)	4
Bridgeport / Stratford Transyt System 19 Rte 130 (831M)	5
Bridgeport Transyt System 16 Rte 130 (745M)	6
Bridgeport Transyt System 17 Rte 130 (721M)	6
Fairfield Transyt System 14 Rte 58 (640M)	7
Fairfield Naztec System 10 Rte 1 (297M)	1*

*NOTE 1: SAME RANK INDICATES WORK ON SYSTEMS TO BE DONE AT THE SAME TIME*  
*NOTE 2 (\*): RANK FOR RETROFITTED CABINETS THAT NEEDS REPLACEMENT. SEE RETROFITTED LISTING*

<b>Total Number of Transyt Systems Per Region</b>	<b>8</b>
<b>Total Number of Naztec Systems Per Region</b>	<b>1</b>
<b>Total Number of Systems per Region</b>	<b>9</b>

WESTERN CT REGION	
Town / System Number / Rte / Master	Rank
Norwalk Naztec System 4 Rte 1 West End (214M)	1*
Norwalk Naztec System 5 Rte 1 East End (234M)	2*
Darien Naztec System 3 Rte 1 (200M)	3*

*NOTE 2 (\*): RANK FOR RETROFITTED CABINETS THAT NEEDS REPLACEMENT. SEE RETROFITTED LISTING*

<b>Total Number of Transyt Systems Per Region</b>	<b>0</b>
<b>Total Number of Naztec Systems Per Region</b>	<b>3</b>
<b>Total Number of Systems per Region</b>	<b>3</b>

## OTHER SYSTEMS

NAUGATUCK VALLEY REGION	
Town / System Number / Rte / Master	Rank
Bristol Transyt System 44 Rte 6 (1618M)	1
Cheshire System 12 Rte 10 (2819M)	2
Watertown Transyt System 15 Rte 63 (2201M)	3

NORTHWEST HILLS REGION	
Town / System Number / Rte / Master	Rank
Winchester Transyt System 51 Rte 44 (4413M)	1

NORTHEASTERN CT REGION	
Town / System Number / Rte / Master	Rank
Brooklyn / Killingly Transyt System 11 Rte 6 & 12 (2602M)	1

SOUTHEASTERN CT REGION	
Town / System Number / Rte / Master	Rank
Waterford Transyt System 53 Rte 85 (3914M)	1
Groton Transyt System 42 Rte 12 (1440M)	2
Windham Transyt System 55 Rte 66 (4804M)	3

<b>Total Number of Transyt Systems</b>	<b>8</b>
<b>Total Number of Naztec Systems</b>	<b>0</b>
<b>Total Number of Systems</b>	<b>8</b>

STATEWIDE TOTALS	
<b>Total Number of Transyt Systems</b>	<b>35</b>
<b>Total Number of Naztec Systems</b>	<b>4</b>
<b>Total Number of Systems</b>	<b>39</b>

*Note that this prioritization represents a snapshot in time. As projects progress and are deployed, as needs evolve, as opportunities present themselves, it is expected that this prioritization list will change over time.*

# APPENDIX B-3: STATEWIDE RETROFITTED CTSS LISTING

Darien Naztec System 3 Rte 1 (200M)			
ID #	Int. #	Intersection Description	Cabinet
203	035-206	HECKER AVE.	8Ø
204	035-226	I-95 NB OFF RAMP	8Ø

Fairfield Naztec System 10 Rte 1 (297M)			
ID #	Int. #	Intersection Description	Cabinet
302	050-207	RUANE ST	4Ø
303	050-208	MILLER ST	4Ø
306	050-214	POST OFFICE & FAIRFIELD	4Ø
307	050-215	BEACH & ROUND HILL	4Ø
309	050-261	BELMONT	8Ø
311	050-235	RT 135 & TIMOTHY CRT	8Ø
312	050-234	RT 135 & WALLS ST	8Ø

Norwalk Naztec System 4 Rte 1 West End (214M)			
ID #	Int. #	Intersection Description	Cabinet
222	102-259	CALDORS SHOPPING CENTER	4Ø
224	102-296	DR TO SHOPPING CNTR	8Ø
230	102-209	STUART	4Ø

Norwalk Naztec System 5 Rte 1 East End (234M)			
ID #	Int. #	Intersection Description	Cabinet
244	102-248	WILLARD RD.	4Ø
245	102-306	LOIS DR	8Ø

NOTE 1: 8 Phase (8Ø) cabinets that have retrofitted panels will need replacement

NOTE 2: 4 Phase (4Ø) cabinets that will need total replacement (including base)

Number of 8Ø Cabinets To Replace	7
Number of 4Ø Cabinets To Replace	7
<b>Total Number To Replace</b>	<b>14</b>

# APPENDIX B-4: PROPOSED NEW CTSS PRIORITY LISTING

Proposed Town / Rte	Rank
Newington Rte 175	1
Newington Rte 173	2
Newington Rte 176	3
Vernon/Rockville Rte 83 Expansion	4
Manchester/Vernon Rte 30	5
Plainville Rte 177	6
East Hartford SR502 (Spencer St) - Rte 15 Ramps to I-384	7
Meriden Rte 5 - I-691 to Rte 15	8
Southington Rte 322	9
New Britain Rte 372	10
Wethersfield Rte 287	11
Berlin Rte 372	12
Waterbury SR801 East Main St	13
Enfield / Stafford Springs Rte 190	14
Enfield Rte 190	15
East Granby Rte 20	16
Granby / Simsbury Rte 10	17
Bolton / Coventry Rte 44	18
Routes Along Millstone Evacuation Plan Rte 1/156/161	19

*Note that this prioritization represents a snapshot in time. As projects progress and are deployed, as needs evolve, as opportunities present themselves, it is expected that this prioritization list will change over time.*

# APPENDIX B-5: CTSS RETIMING PRIORITY LISTING BY REGION

CAPITOL REGION (1)	
Town / System Number / Rte / Master	Rank
Rocky Hill Transyt System 1 Rte 3 (1801M)	1
Canton Naztec System 19 Rte 44 (315M)	2
Vernon Naztec System 61 Rte 83 (645M)	3
Bloomfield Transyt System 10 Rte 218 (2531M)	4
Enfield Naztec System 51 Rte 5 North Section (515M)	5
Enfield Naztec System 49 Rte 5 Post Office Area (475M)	6
East Windsor Naztec System 50 Rte 5 (500M)	7
East Hartford Naztec System 22 Rte 5 South End (118M)	8
Plainville Naztec System 9 Rte 372 (286M)	9
Southington Naztec System 31 Rte 10 (170M)	10
Windsor Naztec System 24 Rte 159 (090M)	11
West Hartford Naztec System 37 Rte 71, 173, 84 (450M)	12
West Hartford Naztec System 38 Rte 529, 173 (485M)	13
Rocky Hill Naztec System 64 Rte 99 (732M)	14
Rocky Hill / Wethersfield Transyt System 24 Rte 99 (2137M)	14
Wethersfield Transyt System 25 Rte 99 (2109M)	14
Windsor Locks Transyt System 48 Rte 75 (3803M)	15
East Hartford / South Windsor Naztec System 28 Rte 5 (132M)	16
Avon / Simsbury Naztec System 33 Rte 44 (385M)	17
Farmington Transyt System 13 Rte 6 (3109M)	18
Farmington / West Hartford Transyt System 54 Rte 71 (4737M)	19
West Hartford Naztec System 46 Rte 44 (542M)	20
Glastonbury Transyt System 8 Rte 94 (2025M)	21
Southington Transyt System 39 Rte 10 (3939M)	22
Simsbury Naztec System 55 Rte 10 & 202 South End (566M)	23
Simsbury Naztec System 56 Rte 10 & 202 North End (575M)	23
East Windsor Naztec System 39 Rte 140 (559M)	24
New Britain Naztec System 18 Rte 174 (043M)	25
Windsor Naztec System 54 Rte 305 (621M)	26
East Hartford Naztec System 26 Rte 5 Burnside (012M)	27
East Hartford Naztec System 32 Rte 518 Pratt System (933M)	28
East Hartford Naztec System 47 Rte 44 Blacksmith Section (605M)	29
Farmington Naztec System 30 Rte 4 South Road Section (355M)	30
Farmington Naztec System 45 Rte 4 (530M)	30
Windsor Naztec System 41 Rte 178 V61 (910M)	31
Windsor Naztec System 57 Rte 75 (655M)	32
Windsor / Bloomfield Naztec System 23 Rte 218 (115M)	33
Berlin Transyt System 26 Rte 372 (3523M)	34
Hartford Naztec System 70 Bus-Way (190M)	35
Hartford Transyt System 45 Rte 44 (4006M)	36
Newington / Berlin / Meriden Naztec System 15 Rte 15 Sth Turnpike (798M)	37
Newington / Wethersfield Naztec System 16 Rte 15 Nth Turnpike (831M)	38
NOTE 1: SAME RANK INDICATES WORK ON SYSTEMS TO BE DONE AT THE SAME TIME	

LOWER CT RIVER VALLEY REGION (2) *	
Town / System Number / Rte / Master	Rank
Cromwell Naztec System 1 Rte 372 (437M)	1
Middletown Naztec System 12 Rte 9 (008M)	2
<b>Total Number of Transyt Systems Per Region</b>	<b>0</b>
<b>Total Number of Naztec Systems Per Region</b>	<b>2</b>
<b>Total Number of Systems per Region</b>	<b>2</b>

NAUGATUCK VALLEY REGION (3) *	
Town / System Number / Rte / Master	Rank
Cheshire Transyt System 12 Rte 10 (2819M)	1
Watertown Transyt System 15 Rte 63 (2201M)	2
Bristol Transyt System 44 Rte 6 (1618M)	3
Bristol / Plainville Naztec System 63 Rte 72 & 229 (630M)	4
Bristol / Southington Naztec System 14 Rte 229 (277M)	5
Southbury Naztec System 40 Rte 6 (427M)	6
<b>Total Number of Transyt Systems Per Region</b>	<b>3</b>
<b>Total Number of Naztec Systems Per Region</b>	<b>3</b>
<b>Total Number of Systems per Region</b>	<b>6</b>

SOUTH CENTRAL REGION (4)	
Town / System Number / Rte / Master	Rank
Branford Transyt 34 System Rte 1 (2903M)	1
New Haven Naztec System 67 Rte 10 (746M)	2
Milford Transyt System 30 Rte 1 (936M)	3
Orange Naztec System 42 Rte 1 (588M)	4
Milford Naztec System 20 Rte 1 West End (075M)	5
Milford Naztec System 21 Rte 1 Center Section (051M)	5
Milford Naztec System 36 Rte 708 (185M)	6
Milford Naztec System 2 Rte 1 Home Acres (037M)	7
Branford Naztec System 6 Rte 1 West End (020M)	8
Branford Naztec System 7 Rte 1 East End (032M)	9
Branford Naztec System 66 Rte 1 Alps Road (061M)	10
Branford Naztec System 59 Rte 1 Cherry Hill (665M)	11
Derby / Orange Transyt System 50 Rte 34 (1015M)	12
East Haven Naztec System 52 Rte 1 (001M)	13
East Haven Naztec System 11 Rte 80 (700M)	14
East Haven Naztec System 65 Rte 1 & 142 (069M)	15
Guilford Transyt System 27 Rte 1 (3309M)	16
New Haven Transyt System 49 Rte 80 (3099M)	17
Orange / West Haven Transyt System 57 Rte 1 (1013M)	18
Orange / West Haven Transyt System 37 Rte 162 (1124M)	19
Meriden / Wallingford Transyt System 47 Rte 5 (4235M)	20
North Haven / Wallingford Transyt System 46 Rte 5 (4202M)	20
Wallingford Naztec System 35 Rte 68 (415M)	21
NOTE 1: SAME RANK INDICATES WORK ON SYSTEMS TO BE DONE AT THE SAME TIME	
<b>Total Number of Transyt Systems Per Region</b>	<b>11</b>
<b>Total Number of Naztec Systems Per Region</b>	<b>31</b>
<b>Total Number of Systems per Region</b>	<b>42</b>

Note that this prioritization represents a snapshot in time. As projects progress and are deployed, as needs evolve, as opportunities present themselves, it is expected that this prioritization list will change over time.

# APPENDIX B-5: CTSS RETIMING PRIORITY LISTING BY REGION

GREATER BRIDGEPORT REGION (5)	
Town / System Number / Rte / Master	Rank
Fairfield Naztec System 10 Rte 1 (297M)	1
Fairfield Transyt System 29 Rte 1 (618M)	1
Bridgeport Transyt System 16 Rte 130 (745M)	2
Bridgeport Transyt System 17 Rte 130 (721M)	2
Bridgeport / Fairfield Transyt System 3 Rte 1 (712M)	3
Stratford Transyt System 23 Rte 110 (809M)	4
Bridgeport Naztec System 69 Steel Point (736M)	5
Stratford Naztec System 13 Rte 1 East End (160M)	6
Stratford Naztec System 17 Rte 1 West End (150M)	7
Fairfield Transyt System 14 Rte 58 (640M)	8
Bridgeport / Stratford Transyt System 19 Rte 130 (831M)	9
Bridgeport / Stratford Transyt System 31 Rte 1 (731M)	10
Fairfield / Westport Naztec System 53 Rte 1 (710M)	11

NOTE 1: SAME RANK INDICATES WORK ON SYSTEMS TO BE DONE AT THE SAME TIME

<b>Total Number of Transyt Systems Per Region</b>	<b>8</b>
<b>Total Number of Naztec Systems Per Region</b>	<b>5</b>
<b>Total Number of Systems per Region</b>	<b>13</b>

SOUTHEASTERN CT REGION (6) *	
Town / System Number / Rte / Master	Rank
Norwich Naztec System 58 Rte 82 (682M)	1
Groton Naztec System 27 Rte 1 (365M)	2
Groton Transyt System 42 Rte 12 (1440M)	3
Waterford Transyt System 53 Rte 85 (3914M)	4
Windham Transyt System 55 Rte 66 (4804M)	5

<b>Total Number of Transyt Systems Per Region</b>	<b>3</b>
<b>Total Number of Naztec Systems Per Region</b>	<b>2</b>
<b>Total Number of Systems per Region</b>	<b>5</b>

WESTERN CT REGION (7) *	
Town / System Number / Rte / Master	Rank
Norwalk Naztec System 4 Rte 1 West End (214M)	1
Norwalk Naztec System 5 Rte 1 East End (234M)	1
Westport Naztec System 62 Rte 136 (673M)	2
Westport Naztec System 25 Rte 1 Sherwood Area (266M)	3
Westport Naztec System 8 Rte 1 West End (250M)	4
Westport Naztec System 44 Rte 476 (600M)	5
Darien Naztec System 48 Rte 1 Rings End Road (613M)	6
Darien Naztec System 3 Rte 1 (200M)	7
Danbury Naztec System 34 Rte 806 (403M)	8
Westport Naztec System 68 Rte 33 @ Merritt (025M)	9
Wilton Naztec System 60 Rte 7 (718M)	10
Norwalk / Wilton Naztec System 29 Rte 7 (328M)	11
New Milford Naztec System 43 Rte 7 (465M)	12

NOTE 1: SAME RANK INDICATES WORK ON SYSTEMS TO BE DONE AT THE SAME TIME

<b>Total Number of Transyt Systems Per Region</b>	<b>0</b>
<b>Total Number of Naztec Systems Per Region</b>	<b>13</b>
<b>Total Number of Systems per Region</b>	<b>13</b>

NORTHWEST HILLS REGION (8) *	
Town / System Number / Rte / Master	Rank
Winchester Transyt System 51 Rte 44 (4413M)	1

<b>Total Number of Transyt Systems Per Region</b>	<b>1</b>
<b>Total Number of Naztec Systems Per Region</b>	<b>0</b>
<b>Total Number of Systems per Region</b>	<b>1</b>

NORTHEASTERN CT REGION (9) *	
Town / System Number / Rte / Master	Rank
Brooklyn / Killingly Transyt System 11 Rte 6 & 12 (2602M)	1

<b>Total Number of Transyt Systems Per Region</b>	<b>1</b>
<b>Total Number of Naztec Systems Per Region</b>	<b>0</b>
<b>Total Number of Systems per Region</b>	<b>1</b>

STATEWIDE TOTALS	
<b>Total Number of Transyt Systems</b>	<b>36</b>
<b>Total Number of Naztec Systems</b>	<b>70</b>
<b>Total Number of Systems</b>	<b>106</b>



DEPARTMENT OF TRANSPORTATION

# APPENDIX C:

# NEEDS ASSESSMENT PRIORITY LISTING RECOMMENDATIONS BY REGION

---





# APPENDIX C-1: CAPITOL REGION

NEW CTSS PRIORITY LISTING	
Proposed Town / Rte	Rank
Newington Rte 175	1
Newington Rte 173	2
Newington Rte 176	3
Vernon/Rockville Rte 83 Expansion	4
Manchester/Vernon Rte 30	5
Plainville Rte 177	6
East Hartford SR502 (Spencer St) - Rte 15 Ramps to I-384	7
Southington Rte 322	8
New Britain Rte 372	9
Wethersfield Rte 287	10
Berlin Rte 372	11
Enfield / Stafford Springs Rte 190	12
Enfield Rte 190	13
East Granby Rte 20	14
Granby / Simsbury Rte 10	15
Bolton / Coventry Rte 44	16

REPLACEMENT PRIORITY LISTING	
Town / System Number / Rte / Master	Rank
Rocky Hill Transyt System 1 Rte 3 (1801M)	1
Bloomfield Transyt System 10 Rte 218 (2531M)	2
Rocky Hill / Wethersfield Transyt System 24 Rte 99 (2137M)	3
Wethersfield Transyt System 25 Rte 99 (2109M)	3
Windsor Locks Transyt System 48 Rte 75 (3803M)	4
Farmington Transyt System 13 Rte 6 (3109M)	5
Glastonbury Transyt System 8 Rte 94 (2025M)	6
Southington Transyt System 39 Rte 10 (3939M)	7
Farmington / West Hartford Transyt System 54 Rte 71 (4737M)	8
Berlin Transyt System 26 Rte 372 (3523M)	9
<small>NOTE 1: SAME RANK INDICATES WORK ON SYSTEMS TO BE DONE AT THE SAME TIME</small>	

<b>Total Number of Transyt Systems Per Region</b>	<b>10</b>
<b>Total Number of Naztec Systems Per Region</b>	<b>0</b>
<b>Total Number of Systems per Region</b>	<b>10</b>

*Note that this prioritization represents a snapshot in time. As projects progress and are deployed, as needs evolve, as opportunities present themselves, it is expected that this prioritization list will change over time.*

# APPENDIX C-1: CAPITOL REGION

RETIMING PRIORITY LISTING	
Town / System Number / Rte / Master	Rank
Rocky Hill Transyt System 1 Rte 3 (1801M)	1
Canton Naztec System 19 Rte 44 (315M)	2
Vernon Naztec System 61 Rte 83 (645M)	3
Bloomfield Transyt System 10 Rte 218 (2531M)	4
Enfield Naztec System 51 Rte 5 North Section (515M)	5
Enfield Naztec System 49 Rte 5 Post Office Area (475M)	6
East Windsor Naztec System 50 Rte 5 (500M)	7
East Hartford Naztec System 22 Rte 5 South End (118M)	8
Plainville Naztec System 9 Rte 372 (286M)	9
Southington Naztec System 31 Rte 10 (170M)	10
Windsor Naztec System 24 Rte 159 (090M)	11
West Hartford Naztec System 37 Rte 71, 173, 84 (450M)	12
West Hartford Naztec System 38 Rte 529, 173 (485M)	13
Rocky Hill Naztec System 64 Rte 99 (732M)	14
Rocky Hill / Wethersfield Transyt System 24 Rte 99 (2137M)	14
Wethersfield Transyt System 25 Rte 99 (2109M)	14
Windsor Locks Transyt System 48 Rte 75 (3803M)	15
East Hartford / South Windsor Naztec System 28 Rte 5 (132M)	16
Avon / Simsbury Naztec System 33 Rte 44 (385M)	17
Farmington Transyt System 13 Rte 6 (3109M)	18
Farmington / West Hartford Transyt System 54 Rte 71 (4737M)	19
West Hartford Naztec System 46 Rte 44 (542M)	20
Glastonbury Transyt System 8 Rte 94 (2025M)	21
Southington Transyt System 39 Rte 10 (3939M)	22
Simsbury Naztec System 55 Rte 10 & 202 South End (566M)	23
Simsbury Naztec System 56 Rte 10 & 202 North End (575M)	23
East Windsor Naztec System 39 Rte 140 (559M)	24
New Britain Naztec System 18 Rte 174 (043M)	25
Windsor Naztec System 54 Rte 305 (621M)	26
East Hartford Naztec System 26 Rte 5 Burnside (012M)	27
East Hartford Naztec System 32 Rte 518 Pratt System (933M)	28
East Hartford Naztec System 47 Rte 44 Blacksmith Section (605M)	29
Farmington Naztec System 30 Rte 4 South Road Section (355M)	30
Farmington Naztec System 45 Rte 4 (530M)	30
Windsor Naztec System 41 Rte 178 V61 (910M)	31
Windsor Naztec System 57 Rte 75 (655M)	32
Windsor / Bloomfield Naztec System 23 Rte 218 (115M)	33
Berlin Transyt System 26 Rte 372 (3523M)	34
Hartford Naztec System 70 Bus-Way (190M)	35
Hartford Transyt System 45 Rte 44 (4006M)	36
Newington / Berlin / Meriden Naztec System 15 Rte 15 Sth Turnpike (798M)	37
Newington / Wethersfield Naztec System 16 Rte 15 Nth Turnpike (831M)	38
NOTE 1: SAME RANK INDICATES WORK ON SYSTEMS TO BE DONE AT THE SAME TIME	
<b>Total Number of Transyt Systems Per Region</b>	<b>11</b>
<b>Total Number of Naztec Systems Per Region</b>	<b>31</b>
<b>Total Number of Systems per Region</b>	<b>42</b>

Note that this prioritization represents a snapshot in time. As projects progress and are deployed, as needs evolve, as opportunities present themselves, it is expected that this prioritization list will change over time.

# APPENDIX C-2: SOUTH CENTRAL REGION

NEW CTSS PRIORITY LISTING	
Proposed Town / Rte	Rank
Meriden Rte 5 - I-691 to Rte 15	1

REPLACEMENT PRIORITY LISTING	
Town / System Number / Rte / Master	Rank
Branford Transyt 34 System Rte 1 (2903M)	1
Derby / Orange Transyt Sytem 50 Rte 34 (1015M)	2
Milford Transyt System 30 Rte 1 (936M)	3
Orange / West Haven Transyt System 57 Rte 1 (1013M)	4
Meriden / Wallingford Transyt System 47 Rte 5 (4235M)	5
North Haven / Wallingford Transyt System 46 Rte 5 (4202M)	5
Orange / West Haven Transyt System 37 Rte 162 (1124M)	6
New Haven Transyt System 49 Rte 80 (3099M)	7
Guilford Transyt System 27 Rte 1 (3309M)	8
<small>NOTE 1: SAME RANK INDICATES WORK ON SYSTEMS TO BE DONE AT THE SAME TIME</small>	

<b>Total Number of Transyt Systems Per Region</b>	<b>9</b>
<b>Total Number of Naztec Systems Per Region</b>	<b>0</b>
<b>Total Number of Systems per Region</b>	<b>9</b>

*Note that this prioritization represents a snapshot in time. As projects progress and are deployed, as needs evolve, as opportunities present themselves, it is expected that this prioritization list will change over time.*

# APPENDIX C-2: SOUTH CENTRAL REGION

RETIMING PRIORITY LISTING	
Town / System Number / Rte / Master	Rank
Branford Transyt 34 System Rte 1 (2903M)	1
New Haven Naztec System 67 Rte 10 (746M)	2
Milford Transyt System 30 Rte 1 (936M)	3
Orange Naztec System 42 Rte 1 (588M)	4
Milford Naztec System 20 Rte 1 West End (075M)	5
Milford Naztec System 21 Rte 1 Center Section (051M)	5
Milford Naztec System 36 Rte 708 (185M)	6
Milford Naztec System 2 Rte 1 Home Acres (037M)	7
Branford Naztec System 6 Rte 1 West End (020M)	8
Branford Naztec System 7 Rte 1 East End (032M)	9
Branford Naztec System 66 Rte 1 Alps Road (061M)	10
Branford Naztec System 59 Rte 1 Cherry Hill (665M)	11
Derby / Orange Transyt Sytem 50 Rte 34 (1015M)	12
East Haven Naztec System 52 Rte 1 (001M)	13
East Haven Naztec System 11 Rte 80 (700M)	14
East Haven Naztec System 65 Rte 1 & 142 (069M)	15
Guilford Transyt System 27 Rte 1 (3309M)	16
New Haven Transyt System 49 Rte 80 (3099M)	17
Orange / West Haven Transyt System 57 Rte 1 (1013M)	18
Orange / West Haven Transyt System 37 Rte 162 (1124M)	19
Meriden / Wallingford Transyt System 47 Rte 5 (4235M)	20
North Haven / Wallingford Transyt System 46 Rte 5 (4202M)	20
Wallingford Naztec System 35 Rte 68 (415M)	21
<i>NOTE 1: SAME RANK INDICATES WORK ON SYSTEMS TO BE DONE AT THE SAME TIME</i>	

<b>Total Number of Transyt Systems Per Region</b>	<b>9</b>
<b>Total Number of Naztec Systems Per Region</b>	<b>14</b>
<b>Total Number of Systems per Region</b>	<b>23</b>

*Note that this prioritization represents a snapshot in time. As projects progress and are deployed, as needs evolve, as opportunities present themselves, it is expected that this prioritization list will change over time.*

# APPENDIX C-3: GREATER BRIDGEPORT REGION

REPLACEMENT PRIORITY LISTING	
Town / System Number / Rte / Master	Rank
Stratford Transyt System 23 Rte 110 (809M)	1
Fairfield Transyt System 29 Rte 1 (618M)	2
Bridgeport / Stratford Transyt System 31 Rte 1 (731M)	3
Bridgeport / Fairfield Transyt System 3 Rte 1 (712M)	4
Bridgeport / Stratford Transyt System 19 Rte 130 (831M)	5
Bridgeport Transyt System 16 Rte 130 (745M)	6
Bridgeport Transyt System 17 Rte 130 (721M)	6
Fairfield Transyt System 14 Rte 58 (640M)	7
Fairfield Naztec System 10 Rte 1 (297M)	1*

*NOTE 1: SAME RANK INDICATES WORK ON SYSTEMS TO BE DONE AT THE SAME TIME*  
*NOTE 2 (\*) : RANK FOR RETROFITTED CABINETS THAT NEEDS REPLACEMENT. SEE RETROFITTED LISTING*

<b>Total Number of Transyt Systems Per Region</b>	<b>8</b>
<b>Total Number of Naztec Systems Per Region</b>	<b>1</b>
<b>Total Number of Systems per Region</b>	<b>9</b>

RETIMING PRIORITY LISTING	
Town / System Number / Rte / Master	Rank
Fairfield Naztec System 10 Rte 1 (297M)	1
Fairfield Transyt System 29 Rte 1 (618M)	1
Bridgeport Transyt System 16 Rte 130 (745M)	2
Bridgeport Transyt System 17 Rte 130 (721M)	2
Bridgeport / Fairfield Transyt System 3 Rte 1 (712M)	3
Stratford Transyt System 23 Rte 110 (809M)	4
Bridgeport Naztec System 69 Steel Point (736M)	5
Stratford Naztec System 13 Rte 1 East End (160M)	6
Stratford Naztec System 17 Rte 1 West End (150M)	7
Fairfield Transyt System 14 Rte 58 (640M)	8
Bridgeport / Stratford Transyt System 19 Rte 130 (831M)	9
Bridgeport / Stratford Transyt System 31 Rte 1 (731M)	10
Fairfield / Westport Naztec System 53 Rte 1 (710M)	11

*NOTE 1: SAME RANK INDICATES WORK ON SYSTEMS TO BE DONE AT THE SAME TIME*

<b>Total Number of Transyt Systems Per Region</b>	<b>8</b>
<b>Total Number of Naztec Systems Per Region</b>	<b>5</b>
<b>Total Number of Systems per Region</b>	<b>13</b>

*Note that this prioritization represents a snapshot in time. As projects progress and are deployed, as needs evolve, as opportunities present themselves, it is expected that this prioritization list will change over time.*

# APPENDIX C-4: WESTERN CT REGION

REPLACEMENT PRIORITY LISTING	
Town / System Number / Rte / Master	Rank
Norwalk Naztec System 4 Rte 1 West End (214M)	1*
Norwalk Naztec System 5 Rte 1 East End (234M)	2*
Darien Naztec System 3 Rte 1 (200M)	3*
NOTE 2 (*): RANK FOR RETROFITTED CABINETS THAT NEEDS REPLACEMENT. SEE RETROFITTED LISTING	

<b>Total Number of Transyt Systems Per Region</b>	<b>0</b>
<b>Total Number of Naztec Systems Per Region</b>	<b>3</b>
<b>Total Number of Systems per Region</b>	<b>3</b>

RETIMING PRIORITY LISTING	
Town / System Number / Rte / Master	Rank
Norwalk Naztec System 4 Rte 1 West End (214M)	1
Norwalk Naztec System 5 Rte 1 East End (234M)	1
Westport Naztec System 62 Rte 136 (673M)	2
Westport Naztec System 25 Rte 1 Sherwood Area (266M)	3
Westport Naztec System 8 Rte 1 West End (250M)	4
Westport Naztec System 44 Rte 476 (600M)	5
Darien Naztec System 48 Rte 1 Rings End Road (613M)	6
Darien Naztec System 3 Rte 1 (200M)	7
Danbury Naztec System 34 Rte 806 (403M)	8
Westport Naztec System 68 Rte 33 @ Merritt (025M)	9
Wilton Naztec System 60 Rte 7 (718M)	10
Norwalk / Wilton Naztec System 29 Rte 7 (328M)	11
New Milford Naztec System 43 Rte 7 (465M)	12
NOTE 1: SAME RANK INDICATES WORK ON SYSTEMS TO BE DONE AT THE SAME TIME	

<b>Total Number of Transyt Systems Per Region</b>	<b>0</b>
<b>Total Number of Naztec Systems Per Region</b>	<b>13</b>
<b>Total Number of Systems per Region</b>	<b>13</b>

*Note that this prioritization represents a snapshot in time. As projects progress and are deployed, as needs evolve, as opportunities present themselves, it is expected that this prioritization list will change over time.*

# APPENDIX C-5: SOUTHEASTERN CT REGION

NEW CTSS PRIORITY LISTING	
Proposed Town / Rte	Rank
Routes Along Millstone Evacuation Plan Rte 1/156/161	1

REPLACEMENT PRIORITY LISTING	
Town / System Number / Rte / Master	Rank
Waterford Transyt System 53 Rte 85 (3914M)	1
Groton Transyt System 42 Rte 12 (1440M)	2
Windham Transyt System 55 Rte 66 (4804M)	3

<b>Total Number of Transyt Systems Per Region</b>	<b>8</b>
<b>Total Number of Naztec Systems Per Region</b>	<b>0</b>
<b>Total Number of Systems per Region</b>	<b>8</b>

RETIMING PRIORITY LISTING	
Town / System Number / Rte / Master	Rank
Norwich Naztec System 58 Rte 82 (682M)	1
Groton Naztec System 27 Rte 1 (365M)	2
Groton Transyt System 42 Rte 12 (1440M)	3
Waterford Transyt System 53 Rte 85 (3914M)	4
Windham Transyt System 55 Rte 66 (4804M)	5

<b>Total Number of Transyt Systems Per Region</b>	<b>3</b>
<b>Total Number of Naztec Systems Per Region</b>	<b>2</b>
<b>Total Number of Systems per Region</b>	<b>5</b>

*Note that this prioritization represents a snapshot in time. As projects progress and are deployed, as needs evolve, as opportunities present themselves, it is expected that this prioritization list will change over time.*

# APPENDIX C-6: NAUGATUCK VALLEY REGION

NEW CTSS PRIORITY LISTING	
Proposed Town / Rte	Rank
Waterbury SR801 East Main St	1

REPLACEMENT PRIORITY LISTING	
Town / System Number / Rte / Master	Rank
Bristol Transyt System 44 Rte 6 (1618M)	1
Cheshire Transyt System 12 Rte 10 (2819M)	2
Watertown Transyt System 15 Rte 63 (2201M)	3

RETIMING PRIORITY LISTING	
Town / System Number / Rte / Master	Rank
Cheshire Transyt System 12 Rte 10 (2819M)	1
Watertown Transyt System 15 Rte 63 (2201M)	2
Bristol Transyt System 44 Rte 6 (1618M)	3
Bristol / Plainville Naztec System 63 Rte 72 & 229 (630M)	4
Bristol / Southington Naztec System 14 Rte 229 (277M)	5
Southbury Naztec System 40 Rte 6 (427M)	6

<b>Total Number of Transyt Systems Per Region</b>	<b>3</b>
<b>Total Number of Naztec Systems Per Region</b>	<b>3</b>
<b>Total Number of Systems per Region</b>	<b>6</b>

*Note that this prioritization represents a snapshot in time. As projects progress and are deployed, as needs evolve, as opportunities present themselves, it is expected that this prioritization list will change over time.*



# APPENDIX C-7: LOWER CT VALLEY REGION

NEW CTSS PRIORITY LISTING	
Proposed Town / Rte	Rank
Routes Along Millstone Evacuation Plan Rte 1/156/161	1

RETIMING PRIORITY LISTING	
Town / System Number / Rte / Master	Rank
Cromwell Naztec System 1 Rte 372 (437M)	1
Middletown Naztec System 12 Rte 9 (008M)	2

<b>Total Number of Transyt Systems Per Region</b>	<b>0</b>
<b>Total Number of Naztec Systems Per Region</b>	<b>2</b>
<b>Total Number of Systems per Region</b>	<b>2</b>

*Note that this prioritization represents a snapshot in time. As projects progress and are deployed, as needs evolve, as opportunities present themselves, it is expected that this prioritization list will change over time.*

# APPENDIX C-8: NOTHWEST HILLS REGION

REPLACEMENT PRIORITY LISTING	
Town / System Number / Rte / Master	Rank
Winchester Transyt System 51 Rte 44 (4413M)	1

RETIMING PRIORITY LISTING	
Town / System Number / Rte / Master	Rank
Winchester Transyt System 51 Rte 44 (4413M)	1

<b>Total Number of Transyt Systems Per Region</b>	<b>1</b>
<b>Total Number of Naztec Systems Per Region</b>	<b>0</b>
<b>Total Number of Systems per Region</b>	<b>1</b>

*Note that this prioritization represents a snapshot in time. As projects progress and are deployed, as needs evolve, as opportunities present themselves, it is expected that this prioritization list will change over time.*

# APPENDIX C-9: NORTHEASTERN CT REGION

REPLACEMENT PRIORITY LISTING	
Town / System Number / Rte / Master	Rank
Brooklyn / Killingly Transyt System 11 Rte 6 & 12 (2602M)	1

RETIMING PRIORITY LISTING	
Town / System Number / Rte / Master	Rank
Brooklyn / Killingly Transyt System 11 Rte 6 & 12 (2602M)	1

<b>Total Number of Transyt Systems Per Region</b>	<b>1</b>
<b>Total Number of Naztec Systems Per Region</b>	<b>0</b>
<b>Total Number of Systems per Region</b>	<b>1</b>

*Note that this prioritization represents a snapshot in time. As projects progress and are deployed, as needs evolve, as opportunities present themselves, it is expected that this prioritization list will change over time.*





DEPARTMENT OF TRANSPORTATION

## APPENDIX D:

# ACTIVE PROJECTS WITH CTSS NOVEMBER-2015

---



# PROJECTS IN STIP AS OF 11/19/2015

Project	Project Location	System Town	System	System ID	Route	Signal	Project Manager	FHWA Oversight	Project Description	FDP
0173-0461	Darien,East Haven,Milford,New Canaan,North Haven,Norwalk,Stratford,Westport	Darien	Naztec	3	RTE 1	035-218		N	DESIGN AND INSTALLATION OF STPA TRAFFIC CONTROL SIGNALS AT VARIOUS LOCATIONS IN DISTRICT 3. [State Oversight - 5/7/15]	25-APR-2015
0171-0402	Bloomfield,Cheshire,East Hartford,New Britain,Plainville,Rocky Hill,Southington,Wethersfield,Windsor Locks	Rocky Hill / Wethersfield	Transyt	24	RTE 99	118-209	Fabry,David M	N	DESIGN AND INSTALLATION OF STPA TRAFFIC CONTROL SIGNALS AT VARIOUS LOCATIONS IN DISTRICT 1.	20-JUN-2018
0171-0377	Cheshire,East Hartford,Enfield,New Britain,Rocky Hill,South Windsor,Wethersfield	East Hartford	Naztec	22	RTE 5	042-229	David M FABRY	N	TRAFFIC SIGNAL INSTALLATION AND REVISION AT VARIOUS LOCATIONS IN DISTRICT 1 (DISTRICT SIGNAL PRESERVATION) FOR FY 2015. FAP# FOR CN = 000R(880) B. Adelstein 8-29-14.	14-JAN-2015
0171-0378	Enfield,West Hartford	East Hartford	Naztec	22	RTE 5	042-237	David M FABRY	N	INSTALLATION AND REVISION OF TRAFFIC CONTROL SIGNALS AT SLOSSS LOCATIONS IN DISTRICT 1 FOR FY2015. FAP# FOR CN = 000R(881) B. Adelstein 8-29-14.	14-JAN-2015
0171-0378	Enfield,West Hartford	Rocky Hill / Wethersfield	Transyt	24	RTE 99	159-206	David M FABRY	N	INSTALLATION AND REVISION OF TRAFFIC CONTROL SIGNALS AT SLOSSS LOCATIONS IN DISTRICT 1 FOR FY2015. FAP# FOR CN = 000R(881) B. Adelstein 8-29-14.	14-JAN-2015
0171-0378	Enfield,West Hartford	Farmington / West Hartford	Transyt	54	RTE 71	155-215	David M FABRY	N	INSTALLATION AND REVISION OF TRAFFIC CONTROL SIGNALS AT SLOSSS LOCATIONS IN DISTRICT 1 FOR FY2015. FAP# FOR CN = 000R(881) B. Adelstein 8-29-14.	14-JAN-2015
0173-0437	Bridgeport,Easton,Milford,North Branford,North Haven,Stratford,Trumbull,Wilton	Stratford	Naztec	17	RTE 1	138-263	Frederick L KULAKOWSKI	N	TRAFFIC SIGNAL INSTALLATION AND REVISION AT VARIOUS LOCATIONS IN DISTRICT 3 (DISTRICT SIGNAL PRESERVATION) FOR FY 2015. FAP 000R(871), V. Smith 6.9.2014	15-MAR-2014
0173-0461	Darien,East Haven,Milford,New Canaan,North Haven,Norwalk,Stratford,Westport	Stratford	Naztec	13	RTE 1	138-240		N	DESIGN AND INSTALLATION OF STPA TRAFFIC CONTROL SIGNALS AT VARIOUS LOCATIONS IN DISTRICT 3. [State Oversight - 5/7/15]	25-APR-2015
0173-0461	Darien,East Haven,Milford,New Canaan,North Haven,Norwalk,Stratford,Westport	Westport	Naztec	25	RTE 1	158-220		N	DESIGN AND INSTALLATION OF STPA TRAFFIC CONTROL SIGNALS AT VARIOUS LOCATIONS IN DISTRICT 3. [State Oversight - 5/7/15]	25-APR-2015
0171-0377	Cheshire,East Hartford,Enfield,New Britain,Rocky Hill,South Windsor,Wethersfield	Cheshire	Transyt	12	RTE 10	025-220	David M FABRY	N	TRAFFIC SIGNAL INSTALLATION AND REVISION AT VARIOUS LOCATIONS IN DISTRICT 1 (DISTRICT SIGNAL PRESERVATION) FOR FY 2015. FAP# FOR CN = 000R(880) B. Adelstein 8-29-14.	14-JAN-2015
0173-0437	Bridgeport,Easton,Milford,North Branford,North Haven,Stratford,Trumbull,Wilton	Wilton	Naztec	60	RTE 7	161-217	Frederick L KULAKOWSKI	N	TRAFFIC SIGNAL INSTALLATION AND REVISION AT VARIOUS LOCATIONS IN DISTRICT 3 (DISTRICT SIGNAL PRESERVATION) FOR FY 2015. FAP 000R(871), V. Smith 6.9.2014	15-MAR-2014
0173-0461	Darien,East Haven,Milford,New Canaan,North Haven,Norwalk,Stratford,Westport	Stratford	Naztec	13	RTE 1	138-241		N	DESIGN AND INSTALLATION OF STPA TRAFFIC CONTROL SIGNALS AT VARIOUS LOCATIONS IN DISTRICT 3. [State Oversight - 5/7/15]	25-APR-2015
0138-0248	Stratford	Stratford	Naztec	13	RTE 1	138-275	Nilesh PATEL	N	Provide a full interchange on I-95 at Interchange 33 in Stratford by constructing a new SB off-ramp and a new NB on-ramp. Includes widening the existing NB off-ramp to two lanes. This project provides the FD/RW/CN phases. PD phase is under P/N 138-240.	16-NOV-2016
0173-0461	Darien,East Haven,Milford,New Canaan,North Haven,Norwalk,Stratford,Westport	Stratford	Naztec	13	RTE 1	138-242		N	DESIGN AND INSTALLATION OF STPA TRAFFIC CONTROL SIGNALS AT VARIOUS LOCATIONS IN DISTRICT 3. [State Oversight - 5/7/15]	25-APR-2015
0171-0402	Bloomfield,Cheshire,East Hartford,New Britain,Plainville,Rocky Hill,Southington,Wethersfield,Windsor Locks	Cheshire	Transyt	12	RTE 10	025-225	Fabry,David M	N	DESIGN AND INSTALLATION OF STPA TRAFFIC CONTROL SIGNALS AT VARIOUS LOCATIONS IN DISTRICT 1.	20-JUN-2018
0173-0461	Darien,East Haven,Milford,New Canaan,North Haven,Norwalk,Stratford,Westport	East Haven	Naztec	11	RTE 80	043-206		N	DESIGN AND INSTALLATION OF STPA TRAFFIC CONTROL SIGNALS AT VARIOUS LOCATIONS IN DISTRICT 3. [State Oversight - 5/7/15]	25-APR-2015
0058-0307	GROTON, STONINGTON, NORTH STONINGTON	Groton	Transyt	42	RTE 12	058-202	Brian Natwick	Y	SAFETY IMPROVEMENTS ON I-95 FROM GOLD STAR BRIDGE IN GROTON TO RI STATE LINE FAP# CN 0954(110)	
0102-0343		Norwalk	Naztec	4	RTE 1	102-208		Y	BREAKOUT OF P/N 102-278 in Norwalk for relocation of overhead and underground utilities along US Rte 1 and over I-95 in advance of the construction of auxiliary lanes in each direction on I-95 between Exits 14 & 15, and improvements to US 1.	13-JAN-2011
0102-0343		Norwalk	Naztec	4	RTE 1	102-206		Y	BREAKOUT OF P/N 102-278 in Norwalk for relocation of overhead and underground utilities along US Rte 1 and over I-95 in advance of the construction of auxiliary lanes in each direction on I-95 between Exits 14 & 15, and improvements to US 1.	13-JAN-2011
0173-0461	Darien,East Haven,Milford,New Canaan,North Haven,Norwalk,Stratford,Westport	Milford	Naztec	20	RTE 1	083-216		N	DESIGN AND INSTALLATION OF STPA TRAFFIC CONTROL SIGNALS AT VARIOUS LOCATIONS IN DISTRICT 3. [State Oversight - 5/7/15]	25-APR-2015
0102-0343		Norwalk	Naztec	4	RTE 1	102-205		Y	BREAKOUT OF P/N 102-278 in Norwalk for relocation of overhead and underground utilities along US Rte 1 and over I-95 in advance of the construction of auxiliary lanes in each direction on I-95 between Exits 14 & 15, and improvements to US 1.	13-JAN-2011
0102-0343		Norwalk	Naztec	4	RTE 1	102-254		Y	BREAKOUT OF P/N 102-278 in Norwalk for relocation of overhead and underground utilities along US Rte 1 and over I-95 in advance of the construction of auxiliary lanes in each direction on I-95 between Exits 14 & 15, and improvements to US 1.	13-JAN-2011
0173-0461	Darien,East Haven,Milford,New Canaan,North Haven,Norwalk,Stratford,Westport	Norwalk	Naztec	4	RTE 1	102-279		N	DESIGN AND INSTALLATION OF STPA TRAFFIC CONTROL SIGNALS AT VARIOUS LOCATIONS IN DISTRICT 3. [State Oversight - 5/7/15]	25-APR-2015

# PROJECTS IN PRE-DESIGN AS OF 11/19/2015

Project	Project Location	System Town	System	System ID	Route	Signal	Project Manager	FHWA Oversight	Project Description	FDP
0171-0373	EAST GRANBY, WINDSOR, WINDSOR LOCKS	Windsor Locks	Transyt	48	RTE 75	165-201	Kevin BLASI	N	This project will address failed paint systems on bridges located in the Bradley airport access roads.	20-NOV-2013
0082-0316		Middletown	Naztec	12	RTE 9	082-207		Not in CT-Core	Reconfigure Rt 17 On-ramp to Rt 9 NB	14-NOV-2018
0092-0646		New Haven	Transyt	49	RTE 80	092-298		Y	Project to upgrade variable message signs on I-95/I-91 and other major roadways in the Greater New Haven Region. This project replaces 173-385 and the design work under 173-391.	05-NOV-2014
0092-0646		New Haven	Transyt	49	RTE 80	092-231		Y	Project to upgrade variable message signs on I-95/I-91 and other major roadways in the Greater New Haven Region. This project replaces 173-385 and the design work under 173-391.	05-NOV-2014
0172-0436	Bolton,East Haddam,Griswold,Groton,Haddam,Plainfield	Groton	Transyt	42	RTE 12	058-256	Sunny D EZETE	N	DESIGN AND INSTALLATION OF STPA TRAFFIC CONTROL SIGNALS AT VARIOUS LOCATIONS IN DISTRICT 2. (2017 PROGRAM) [State Oversight - 9/18/14]	01-MAR-2017
0172-0436	Bolton,East Haddam,Griswold,Groton,Haddam,Plainfield	Groton	Transyt	42	RTE 12	058-203	Sunny D EZETE	N	DESIGN AND INSTALLATION OF STPA TRAFFIC CONTROL SIGNALS AT VARIOUS LOCATIONS IN DISTRICT 2. (2017 PROGRAM) [State Oversight - 9/18/14]	01-MAR-2017
0171-0394	Bloomfield,East Hartford,Manchester,Rocky Hill,Somers,Vernon,Windsor	Rocky Hill	Transyt	1	RTE 3	118-226	David M FABRY	N	DESIGN AND INSTALLATION OF STPA TRAFFIC CONTROL SIGNALS AT VARIOUS LOCATIONS IN DISTRICT 1. (2017 PROGRAM)	02-JUN-2017
0172-0436	Bolton,East Haddam,Griswold,Groton,Haddam,Plainfield	Groton	Naztec	27	RTE 1	058-236	Sunny D EZETE	N	DESIGN AND INSTALLATION OF STPA TRAFFIC CONTROL SIGNALS AT VARIOUS LOCATIONS IN DISTRICT 2. (2017 PROGRAM) [State Oversight - 9/18/14]	01-MAR-2017
0173-0451	Fairfield,New Canaan,New Haven,North Haven,Norwalk,Shelton,Stratford,Trumbull,Woodbridge	Fairfield	Transyt	29	RTE 1	050-219	Kulakowski,Frederick L	N	DESIGN AND INSTALLATION OF STPA TRAFFIC CONTROL SIGNALS AT VARIOUS LOCATIONS IN DISTRICT 3. (2017 PROGRAM). [State Oversight - 9/18/14]	26-APR-2017
0172-0436	Bolton,East Haddam,Griswold,Groton,Haddam,Plainfield	Groton	Naztec	27	RTE 1	058-211	Sunny D EZETE	N	DESIGN AND INSTALLATION OF STPA TRAFFIC CONTROL SIGNALS AT VARIOUS LOCATIONS IN DISTRICT 2. (2017 PROGRAM) [State Oversight - 9/18/14]	01-MAR-2017
0172-0443	Clinton,Colchester,Groton,Norwich,Putnam,Windham	Groton	Naztec	27	RTE 1	058-214		N	DESIGN AND INSTALLATION OF TRAFFIC CONTROL SIGNALS AT TWO (2) SLOSSS LOCATIONS IN DISTRICT 2.	28-FEB-2018
0172-0435	Colchester,East Hampton,Groton,Middletown,Putnam	Groton	Naztec	27	RTE 1	058-201	Sunny D EZETE	N	DESIGN AND INSTALLATION OF TRAFFIC CONTROL SIGNALS AT SLOSSS LOCATIONS IN THE CITY OF GROTON IN DISTRICT 2. (2017 PROGRAM)	01-MAR-2017
0092-0646		East Haven	Naztec	52	RTE 1	043-214		Y	Project to upgrade variable message signs on I-95/I-91 and other major roadways in the Greater New Haven Region. This project replaces 173-385 and the design work under 173-391.	05-NOV-2014
0172-0436	Bolton,East Haddam,Griswold,Groton,Haddam,Plainfield	Groton	Naztec	27	RTE 1	058-210	Sunny D EZETE	N	DESIGN AND INSTALLATION OF STPA TRAFFIC CONTROL SIGNALS AT VARIOUS LOCATIONS IN DISTRICT 2. (2017 PROGRAM) [State Oversight - 9/18/14]	01-MAR-2017
0050-0218		Fairfield	Transyt	29	RTE 1	050-218		N	The project will provide pedestrian improvements to Kings Highway (Route 1) in the Town of Fairfield from Chambers Street north to Fairchild Street a distance of 1750 feet. FAP # PEDS(173), V. Smith, 5.16.2014	
0174-0400	Ansonia,Avon,Bethel,Danbury,Naugatuck,Ridgefield,Simsbury	Danbury	Naztec	34	RTE 806	034-245		N	DESIGN AND INSTALLATION OF STPA TRAFFIC CONTROL SIGNALS AT VARIOUS LOCATIONS IN DISTRICT 4.	03-JAN-2018
0171-0394	Bloomfield,East Hartford,Manchester,Rocky Hill,Somers,Vernon,Windsor	Windsor	Naztec	54	RTE 305	164-209	David M FABRY	N	DESIGN AND INSTALLATION OF STPA TRAFFIC CONTROL SIGNALS AT VARIOUS LOCATIONS IN DISTRICT 1. (2017 PROGRAM)	02-JUN-2017
0092-0646		East Haven	Naztec	52	RTE 1	043-234		Y	Project to upgrade variable message signs on I-95/I-91 and other major roadways in the Greater New Haven Region. This project replaces 173-385 and the design work under 173-391.	05-NOV-2014
0034-0347		Danbury	Naztec	34	RTE 806	034-250		N	Intersection Improvements on SR 806 at Old Newtown Road and Safety Improvements on SR 806 from Old Newtown Road to Plumtrees Road and Eagle Road to Industrial Plaza Road in Danbury.	11-DEC-2014
0174-0391	Danbury,Naugatuck	Danbury	Naztec	34	RTE 806	034-223	Lindeberg,Erika B	N	DESIGN AND INSTALLATION OF TRAFFIC CONTROL SIGNALS AT SLOSSS LOCATIONS IN THE CITY OF DANBURY AND TOWN OF NAUGATUCK IN DISTRICT 4. (2017 PROGRAM)	04-JAN-2017
0171-0304	FARMINGTON, NEW BRITAIN, PLAINVILLE, SOUTHTON	West Hartford	Naztec	37	RTE 71, 173, 84	155-230		N	Upgrade and replace highway signs on I-84 from vicinity of Exit 30 to vicinity Exit 52 FAP# FOR (CN) 0843(203) B. Adelstein 4-08-10.	05-OCT-2011
0034-0347		Danbury	Naztec	34	RTE 806	034-224		N	Intersection Improvements on SR 806 at Old Newtown Road and Safety Improvements on SR 806 from Old Newtown Road to Plumtrees Road and Eagle Road to Industrial Plaza Road in Danbury.	11-DEC-2014
0174-0400	Ansonia,Avon,Bethel,Danbury,Naugatuck,Ridgefield,Simsbury	Danbury	Naztec	34	RTE 806	034-239		N	DESIGN AND INSTALLATION OF STPA TRAFFIC CONTROL SIGNALS AT VARIOUS LOCATIONS IN DISTRICT 4.	03-JAN-2018
0034-0347		Danbury	Naztec	34	RTE 806	034-240		N	Intersection Improvements on SR 806 at Old Newtown Road and Safety Improvements on SR 806 from Old Newtown Road to Plumtrees Road and Eagle Road to Industrial Plaza Road in Danbury.	11-DEC-2014
0132-0138		East Hartford / South Windsor	Naztec	28	RTE 5	132-206		N	Design and upgrading of traffic control signals with railroad pre-emption at five intersections in the Town of South Windsor on Route 5. [State Oversight - 3/24/15]	03-SEP-2017
0132-0138		East Hartford / South Windsor	Naztec	28	RTE 5	132-229		N	Design and upgrading of traffic control signals with railroad pre-emption at five intersections in the Town of South Windsor on Route 5. [State Oversight - 3/24/15]	03-SEP-2017
0132-0138		East Hartford / South Windsor	Naztec	28	RTE 5	132-224		N	Design and upgrading of traffic control signals with railroad pre-emption at five intersections in the Town of South Windsor on Route 5. [State Oversight - 3/24/15]	03-SEP-2017
0132-0138		East Hartford / South Windsor	Naztec	28	RTE 5	132-210		N	Design and upgrading of traffic control signals with railroad pre-emption at five intersections in the Town of South Windsor on Route 5. [State Oversight - 3/24/15]	03-SEP-2017
0132-0138		East Hartford / South Windsor	Naztec	28	RTE 5	132-208		N	Design and upgrading of traffic control signals with railroad pre-emption at five intersections in the Town of South Windsor on Route 5. [State Oversight - 3/24/15]	03-SEP-2017
0171-0373	EAST GRANBY, WINDSOR, WINDSOR LOCKS	Windsor Locks	Transyt	48	RTE 75	164-205	Kevin BLASI	N	This project will address failed paint systems on bridges located in the Bradley airport access roads.	20-NOV-2013



# PROJECTS IN FINAL DESIGN AS OF 11/19/2015

Project	Project Location	System Town	System	System ID	Route	Signal	Project Manager	FHWA	Project Description	FDP
0171-0372	District 1	Berlin	Transyt	26	RTE 372	007-247		N	Provide accessible pedestrian signals (APS) and detectors at approximately 45 state-maintained traffic control signals in Dist. 1. FAP# FOR (CN) PEDS(177) B. Adelstein 7-21-14.	11-MAY-2016
0063-0633		Hartford	Transyt	45	RTE 44	063-248		N	Safety Impr., Homestead Ave to Garden St	
0173-0438	Bridgeport,Darien	Bridgeport / Fairfield	Transyt	3	RTE 1	015-214	Frederick L KULAKOWSKI	N	INSTALLATION AND REVISION OF TRAFFIC CONTROL SIGNALS AT SLOSSS LOCATIONS IN DISTRICT 3 FOR FY2015. FAP 000R(873), V. Smith 6.9.2014	27-APR-2016
0173-0438	Bridgeport,Darien	Bridgeport	Transyt	17	RTE 130	015-331	Frederick L KULAKOWSKI	N	INSTALLATION AND REVISION OF TRAFFIC CONTROL SIGNALS AT SLOSSS LOCATIONS IN DISTRICT 3 FOR FY2015. FAP 000R(873), V. Smith 6.9.2014	27-APR-2016
0170-2296	NEW HAVEN	Hartford	Naztec	70	BUSWAY	063-298	John Bernick	Yes	Rail Infrastructure	
0063-0633		Hartford	Transyt	45	RTE 44	063-206		N	Safety Impr., Homestead Ave to Garden St	
0171-0372	District 1	Berlin	Transyt	26	RTE 372	007-212		N	Provide accessible pedestrian signals (APS) and detectors at approximately 45 state-maintained traffic control signals in Dist. 1. FAP# FOR (CN) PEDS(177) B. Adelstein 7-21-14.	11-MAY-2016
0063-0633		Hartford	Transyt	45	RTE 44	063-209		N	Safety Impr., Homestead Ave to Garden St	
0063-0633		Hartford	Transyt	45	RTE 44	063-207		N	Safety Impr., Homestead Ave to Garden St	
0017-0182	Bristol,Farmington,New Britain,Plainville,Southington	Bristol	Transyt	44	RTE 6	017-222	Matthew VAIL	N	Provide a second eastbound through lane from Carol Drive to Peggy Lane, a one mile segment of the Route 6 corridor in Bristol, to reduce accidents and improve traffic flow. FAP# FOR (CN) 0006(113) B. Adelstein 7-09-09.	31-OCT-2012
0063-0633		Hartford	Transyt	45	RTE 44	063-205		N	Safety Impr., Homestead Ave to Garden St	
0017-0182	Bristol,Farmington,New Britain,Plainville,Southington	Bristol	Transyt	44	RTE 6	017-250	Matthew VAIL	N	Provide a second eastbound through lane from Carol Drive to Peggy Lane, a one mile segment of the Route 6 corridor in Bristol, to reduce accidents and improve traffic flow. FAP# FOR (CN) 0006(113) B. Adelstein 7-09-09.	31-OCT-2012
0017-0182	Bristol,Farmington,New Britain,Plainville,Southington	Bristol	Transyt	44	RTE 6	017-223	Matthew VAIL	N	Provide a second eastbound through lane from Carol Drive to Peggy Lane, a one mile segment of the Route 6 corridor in Bristol, to reduce accidents and improve traffic flow. FAP# FOR (CN) 0006(113) B. Adelstein 7-09-09.	31-OCT-2012
0017-0182	Bristol,Farmington,New Britain,Plainville,Southington	Bristol	Transyt	44	RTE 6	017-203	Matthew VAIL	N	Provide a second eastbound through lane from Carol Drive to Peggy Lane, a one mile segment of the Route 6 corridor in Bristol, to reduce accidents and improve traffic flow. FAP# FOR (CN) 0006(113) B. Adelstein 7-09-09.	31-OCT-2012
0017-0182	Bristol,Farmington,New Britain,Plainville,Southington	Bristol	Transyt	44	RTE 6	017-268	Matthew VAIL	N	Provide a second eastbound through lane from Carol Drive to Peggy Lane, a one mile segment of the Route 6 corridor in Bristol, to reduce accidents and improve traffic flow. FAP# FOR (CN) 0006(113) B. Adelstein 7-09-09.	31-OCT-2012
0174-0376	Ansonia,Bethel,Danbury,Harwinton,Simsbury,Southbury	Danbury	Naztec	34	RTE 806	034-229	Lindeberg,Erika B	N	TRAFFIC SIGNAL INSTALLATION AND REVISION AT VARIOUS LOCATIONS IN DISTRICT 4 (DISTRICT SIGNAL PRESERVATION) FOR FY 2015. FAP# FOR (CN) 000R(840) B. Adelstein 4-7-14. [State Oversight - 3/28/14]	06-JAN-2016
0063-0633		Hartford	Transyt	45	RTE 44	063-210		N	Safety Impr., Homestead Ave to Garden St	
0172-0423	Clinton,Groton,Killingly,Mansfield,Middletown,North Stonington,Norwich,Old Saybrook	Groton	Naztec	27	RTE 1	058-251	Sunny D EZETE	N	TRAFFIC SIGNAL INSTALLATION AND REVISION AT VARIOUS LOCATIONS IN DISTRICT 2 (DISTRICT SIGNAL PRESERVATION) FOR FY 2015.	02-MAR-2016
0173-0438	Bridgeport,Darien	Darien	Naztec	3	RTE 1	035-209	Frederick L KULAKOWSKI	N	INSTALLATION AND REVISION OF TRAFFIC CONTROL SIGNALS AT SLOSSS LOCATIONS IN DISTRICT 3 FOR FY2015. FAP 000R(873), V. Smith 6.9.2014	27-APR-2016
0171-0372	District 1	Cheshire	Transyt	12	RTE 10	025-219		N	Provide accessible pedestrian signals (APS) and detectors at approximately 45 state-maintained traffic control signals in Dist. 1. FAP# FOR (CN) PEDS(177) B. Adelstein 7-21-14.	11-MAY-2016
0171-0372	District 1	Cheshire	Transyt	12	RTE 10	025-203		N	Provide accessible pedestrian signals (APS) and detectors at approximately 45 state-maintained traffic control signals in Dist. 1. FAP# FOR (CN) PEDS(177) B. Adelstein 7-21-14.	11-MAY-2016
0171-0372	District 1	Cheshire	Transyt	12	RTE 10	025-204		N	Provide accessible pedestrian signals (APS) and detectors at approximately 45 state-maintained traffic control signals in Dist. 1. FAP# FOR (CN) PEDS(177) B. Adelstein 7-21-14.	11-MAY-2016
0063-0633		Hartford	Transyt	45	RTE 44	063-211		N	Safety Impr., Homestead Ave to Garden St	
0171-0372	District 1	Cheshire	Transyt	12	RTE 10	025-238		N	Provide accessible pedestrian signals (APS) and detectors at approximately 45 state-maintained traffic control signals in Dist. 1. FAP# FOR (CN) PEDS(177) B. Adelstein 7-21-14.	11-MAY-2016
0017-0182	Bristol,Farmington,New Britain,Plainville,Southington	Bristol	Transyt	44	RTE 6	017-252	Matthew VAIL	N	Provide a second eastbound through lane from Carol Drive to Peggy Lane, a one mile segment of the Route 6 corridor in Bristol, to reduce accidents and improve traffic flow. FAP# FOR (CN) 0006(113) B. Adelstein 7-09-09.	
0171-0372	District 1	Plainville	Naztec	9	RTE 372	109-220		N	Provide accessible pedestrian signals (APS) and detectors at approximately 45 state-maintained traffic control signals in Dist. 1. FAP# FOR (CN) PEDS(177) B. Adelstein 7-21-14.	11-MAY-2016
0063-0633		Hartford	Transyt	45	RTE 44	063-208		N	Safety Impr., Homestead Ave to Garden St	
0106-0108		Orange	Naztec	42	RTE 1	106-203		N	OPERATIONAL LANE, U.S. RTE. 1 ORANGE, MILFORD TL TO RTE 114. FAP# FOR (CN) 0001(254) V. Smith 12-09-08.	
0106-0108		Milford	Transyt	30	RTE 1	106-201		N	OPERATIONAL LANE, U.S. RTE. 1 ORANGE, MILFORD TL TO RTE 114. FAP# FOR (CN) 0001(254) V. Smith 12-09-08.	
0102-0346	Norwalk	Norwalk	Naztec	4	RTE 1	102-209	Sebastian CANNAMELA	N	Breakout from P/N 102-285 for Construction of Stuart Ave @ US 1 intersection improvements for safety and traffic operations. US 1 will be widened to accommodate a left turn lane and the existing signal will be replaced. The drainage will be upgraded.	17-JUN-2015
0106-0108		Orange	Naztec	42	RTE 1	106-211		N	OPERATIONAL LANE, U.S. RTE. 1 ORANGE, MILFORD TL TO RTE 114. FAP# FOR (CN) 0001(254) V. Smith 12-09-08.	
0171-0372	District 1	Wethersfield	Transyt	25	RTE 99	159-219		N	Provide accessible pedestrian signals (APS) and detectors at approximately 45 state-maintained traffic control signals in Dist. 1. FAP# FOR (CN) PEDS(177) B. Adelstein 7-21-14.	11-MAY-2016
0171-0372	District 1	Rocky Hill / Wethersfield	Transyt	24	RTE 99	159-246		N	Provide accessible pedestrian signals (APS) and detectors at approximately 45 state-maintained traffic control signals in Dist. 1. FAP# FOR (CN) PEDS(177) B. Adelstein 7-21-14.	11-MAY-2016
0171-0372	District 1	Rocky Hill	Transyt	1	RTE 3	118-216		N	Provide accessible pedestrian signals (APS) and detectors at approximately 45 state-maintained traffic control signals in Dist. 1. FAP# FOR (CN) PEDS(177) B. Adelstein 7-21-14.	11-MAY-2016

# PROJECTS IN CONTRACT PROCESSING AS OF 11/19/2015

Project	Project Location	System Town	System	System ID	Route	Signal	Project Manager	FHWA	Project Description	FDP
0171-0381	Berlin,East Hartford,Hartford,Manchester,Middletown,Rocky Hill,Vernon,West Hartford	West Hartford	Naztec	38	RTE 529 & 173	155-226	David M FABRY	N	Provide accessible pedestrian signals (APS) and detectors at approximately 25 state-maintained traffic control signals in District 1. FAP# FOR (CN) PEDS(178) B. Adelstein 7-21-14.	12-NOV-2014
0171-0382		West Hartford	Naztec	37	RTE 71, 173, 84	155-218	David M FABRY	N	Provide accessible pedestrian signals (APS) and detectors at approximately 50 state-maintained traffic control signals in District 1. FAP# FOR (CN) PEDS(179) B. Adelstein 7-21-14.	29-APR-2015
0173-0420	Fairfield,Milford,New Canaan,Norwalk,Shelton,Trumbull,Weston,Westport	Westport	Naztec	25	RTE 1	158-218	Frederick L KULAKOWSKI	N	TRAFFIC SIGNAL INSTALLATION AND REVISION AT VARIOUS LOCATIONS IN DISTRICT 3 FOR FY2014. 100% STATE FUNDING FIF-ROAD 10-11-12 B. ADELSTEIN	20-AUG-2014
0171-0382		East Hartford	Naztec	22	RTE 5	042-226	David M FABRY	N	Provide accessible pedestrian signals (APS) and detectors at approximately 50 state-maintained traffic control signals in District 1. FAP# FOR (CN) PEDS(179) B. Adelstein 7-21-14.	29-APR-2015
0171-0382		East Hartford	Naztec	22	RTE 5	042-254	David M FABRY	N	Provide accessible pedestrian signals (APS) and detectors at approximately 50 state-maintained traffic control signals in District 1. FAP# FOR (CN) PEDS(179) B. Adelstein 7-21-14.	29-APR-2015
0171-0382		East Hartford	Naztec	22	RTE 5	042-227	David M FABRY	N	Provide accessible pedestrian signals (APS) and detectors at approximately 50 state-maintained traffic control signals in District 1. FAP# FOR (CN) PEDS(179) B. Adelstein 7-21-14.	29-APR-2015
0174-0361	BROOKFIELD, FARMINGTON, HARWINTON, NEW HARTFORD, NEW MILFORD, TORRINGTON, WATERTOWN, WINCHESTER	Winchester	Transyt	51	RTE 44	162-213	Erika Lindeberg	N	INSTALLATION AND REVISION OF STC TRAFFIC CONTROL SIGNAS IN DISTRICT 4 FOR FY 2014. 100% STATE FUNDING FIF-ROAD 10-11-12 B. ADELSTEIN [State Oversight - 12/11/13]	31-DEC-2014
0173-0420	Fairfield,Milford,New Canaan,Norwalk,Shelton,Trumbull,Weston,Westport	Westport	Naztec	8	RTE 1	158-210	Frederick L KULAKOWSKI	N	TRAFFIC SIGNAL INSTALLATION AND REVISION AT VARIOUS LOCATIONS IN DISTRICT 3 FOR FY2014. 100% STATE FUNDING FIF-ROAD 10-11-12 B. ADELSTEIN	20-AUG-2014
0171-0382		East Hartford	Naztec	26	RTE 5	042-202	David M FABRY	N	Provide accessible pedestrian signals (APS) and detectors at approximately 50 state-maintained traffic control signals in District 1. FAP# FOR (CN) PEDS(179) B. Adelstein 7-21-14.	29-APR-2015
0171-0382		East Hartford	Naztec	26	RTE 5	042-213	David M FABRY	N	Provide accessible pedestrian signals (APS) and detectors at approximately 50 state-maintained traffic control signals in District 1. FAP# FOR (CN) PEDS(179) B. Adelstein 7-21-14.	29-APR-2015
0171-0382		East Hartford	Naztec	26	RTE 5	042-203	David M FABRY	N	Provide accessible pedestrian signals (APS) and detectors at approximately 50 state-maintained traffic control signals in District 1. FAP# FOR (CN) PEDS(179) B. Adelstein 7-21-14.	29-APR-2015
0171-0382		East Hartford / South Windsor	Naztec	28	RTE 5	042-217	David M FABRY	N	Provide accessible pedestrian signals (APS) and detectors at approximately 50 state-maintained traffic control signals in District 1. FAP# FOR (CN) PEDS(179) B. Adelstein 7-21-14.	29-APR-2015
0171-0382		Windsor	Naztec	24	RTE 159	164-255	David M FABRY	N	Provide accessible pedestrian signals (APS) and detectors at approximately 50 state-maintained traffic control signals in District 1. FAP# FOR (CN) PEDS(179) B. Adelstein 7-21-14.	29-APR-2015
0171-0382		Windsor	Naztec	24	RTE 159	164-234	David M FABRY	N	Provide accessible pedestrian signals (APS) and detectors at approximately 50 state-maintained traffic control signals in District 1. FAP# FOR (CN) PEDS(179) B. Adelstein 7-21-14.	29-APR-2015
0171-0381	Berlin,East Hartford,Hartford,Manchester,Middletown,Rocky Hill,Vernon,West Hartford	East Hartford	Naztec	22	RTE 5	042-228	David M FABRY	N	Provide accessible pedestrian signals (APS) and detectors at approximately 25 state-maintained traffic control signals in District 1. FAP# FOR (CN) PEDS(178) B. Adelstein 7-21-14.	12-NOV-2014
0015-0363	BRIDGEPORT	Bridgeport / Stratford	Transyt	31	RTE 1	015-216	Andrew CARDINALI	N	SUPERSTRUCTURE REPLACEMENT OF BRIDGE #03761,#03762,#03764, AND #03765 WHICH CARRIES ROUTE 8 OVER LINDLEY STREET AND CAPITOL AVE. IN BRIDGEPORT. NO ADDED CAPACITY. DESIGN/ BUILD PILOT PROJECT	
0170-3310	Statewide	Windsor / Bloomfield	Naztec	23	RTE 218	164-251	Joseph P OUELLETTE	N	Installation of reference location signs on Interstate 91 (entire length) from New Haven northerly to the Massachusetts State Line. FAP # 0913(173), V. Smith; 7.29.2014	03-DEC-2014
0170-3310	Statewide	Windsor / Bloomfield	Naztec	23	RTE 218	164-250	Joseph P OUELLETTE	N	Installation of reference location signs on Interstate 91 (entire length) from New Haven northerly to the Massachusetts State Line. FAP # 0913(173), V. Smith; 7.29.2014	03-DEC-2014
0171-0381	Berlin,East Hartford,Hartford,Manchester,Middletown,Rocky Hill,Vernon,West Hartford	Berlin	Transyt	26	RTE 372	007-226	David M FABRY	N	Provide accessible pedestrian signals (APS) and detectors at approximately 25 state-maintained traffic control signals in District 1. FAP# FOR (CN) PEDS(178) B. Adelstein 7-21-14.	12-NOV-2014
0015-0345		Bridgeport	Transyt	16	RTE 130	015-245		Y	Project to upgrade CCTV, TFM and communications equipment on I-95 and Rte. 8 in the Greater Bridgeport Region. This project replaces 173-386 and the design work under 173-390. Automatic CE 12/23/13.	24-SEP-2014
0015-0345		Bridgeport	Transyt	16	RTE 130	015-246		Y	Project to upgrade CCTV, TFM and communications equipment on I-95 and Rte. 8 in the Greater Bridgeport Region. This project replaces 173-386 and the design work under 173-390. Automatic CE 12/23/13.	24-SEP-2014
0063-0702		Windsor / Bloomfield	Naztec	23	RTE 218	164-249		Y	Mill 2 5/8" & place 2" PMA+5/8" Ultra-thin Bonded (UTB) HMA NB & SB incl. Ramps R-841 & R-182; Mill 5/8" and place 5/8" UTB HMA NB & SB INC ALL RAMPS [Federal Oversight - 6/10/14]. FAP# FOR CN = 0913(175) B. Adelstein 11-20-14.	11-NOV-2014
0015-0345		Bridgeport	Naztec	69	STEEL POINT	015-220		Y	Project to upgrade CCTV, TFM and communications equipment on I-95 and Rte. 8 in the Greater Bridgeport Region. This project replaces 173-386 and the design work under 173-390. Automatic CE 12/23/13.	24-SEP-2014
0063-0702		Windsor	Naztec	41	RTE 178	164-258		Y	Mill 2 5/8" & place 2" PMA+5/8" Ultra-thin Bonded (UTB) HMA NB & SB incl. Ramps R-841 & R-182; Mill 5/8" and place 5/8" UTB HMA NB & SB INC ALL RAMPS [Federal Oversight - 6/10/14]. FAP# FOR CN = 0913(175) B. Adelstein 11-20-14.	11-NOV-2014
0171-0381	Berlin,East Hartford,Hartford,Manchester,Middletown,Rocky Hill,Vernon,West Hartford	West Hartford	Naztec	46	RTE 44	155-207	David M FABRY	N	Provide accessible pedestrian signals (APS) and detectors at approximately 25 state-maintained traffic control signals in District 1. FAP# FOR (CN) PEDS(178) B. Adelstein 7-21-14.	12-NOV-2014
0063-0702		Windsor	Naztec	41	RTE 178	164-257		Y	Mill 2 5/8" & place 2" PMA+5/8" Ultra-thin Bonded (UTB) HMA NB & SB incl. Ramps R-841 & R-182; Mill 5/8" and place 5/8" UTB HMA NB & SB INC ALL RAMPS [Federal Oversight - 6/10/14]. FAP# FOR CN = 0913(175) B. Adelstein 11-20-14.	11-NOV-2014

# PROJECTS IN CONTRACT PROCESSING AS OF 11/19/2015

Project	Project Location	System Town	System	System ID	Route	Signal	Project Manager	FHWA	Project Description	FDP
0171-0382		West Hartford	Naztec	46	RTE 44	155-206	David M FABRY	N	Provide accessible pedestrian signals (APS) and detectors at approximately 50 state-maintained traffic control signals in District 1. FAP# FOR (CN) PEDS(179) B. Adelstein 7-21-14.	29-APR-2015
0171-0382		West Hartford	Naztec	46	RTE 44	155-250	David M FABRY	N	Provide accessible pedestrian signals (APS) and detectors at approximately 50 state-maintained traffic control signals in District 1. FAP# FOR (CN) PEDS(179) B. Adelstein 7-21-14.	29-APR-2015
0170-3310	Statewide	Windsor	Naztec	57	RTE 75	164-263	Joseph P OUELLETTE	N	Installation of reference location signs on Interstate 91 (entire length) from New Haven northerly to the Massachusetts State Line. FAP # 0913(173), V. Smith; 7.29.2014	03-DEC-2014
0063-0702		Windsor	Naztec	54	RTE 305	164-260		Y	Mill 2 5/8" & place 2" PMA+5/8" Ultra-thin Bonded (UTB) HMA NB & SB incl. Ramps R-841 & R-182; Mill 5/8" and place 5/8" UTB HMA NB & SB INC ALL RAMPS [Federal Oversight - 6/10/14]. FAP# FOR CN = 0913(175) B. Adelstein 11-20-14.	11-NOV-2014
0170-3310	Statewide	Windsor	Naztec	54	RTE 305	164-259	Joseph P OUELLETTE	N	Installation of reference location signs on Interstate 91 (entire length) from New Haven northerly to the Massachusetts State Line. FAP # 0913(173), V. Smith; 7.29.2014	03-DEC-2014
0156-0170	WEST HAVEN	Orange / West Haven	Transyt	57	RTE 1	156-204	Andy Fesenmeyer	N	INTERSECTION IMPROVEMENT ROUTE 1 @ ROUTE 122 IN WEST HAVEN. FAP# FOR CN = 0001(279) B. Adelstein 6-12-14.	
0063-0702		Windsor	Naztec	54	RTE 305	164-241		Y	Mill 2 5/8" & place 2" PMA+5/8" Ultra-thin Bonded (UTB) HMA NB & SB incl. Ramps R-841 & R-182; Mill 5/8" and place 5/8" UTB HMA NB & SB INC ALL RAMPS [Federal Oversight - 6/10/14]. FAP# FOR CN = 0913(175) B. Adelstein 11-20-14.	11-NOV-2014
0015-0345		Bridgeport	Naztec	69	STEEL POINT	015-326		Y	Project to upgrade CCTV, TFM and communications equipment on I-95 and Rte. 8 in the Greater Bridgeport Region. This project replaces 173-386 and the design work under 173-390. Automatic CE 12/23/13.	24-SEP-2014
0171-0382		Rocky Hill / Wethersfield	Transyt	24	RTE 99	159-237	David M FABRY	N	Provide accessible pedestrian signals (APS) and detectors at approximately 50 state-maintained traffic control signals in District 1. FAP# FOR (CN) PEDS(179) B. Adelstein 7-21-14.	29-APR-2015
0051-0270		Farmington	Naztec	45	RTE 4	051-201		N	Advanced sewer relocation construction project on Route 4, as a breakout from parent project 51-260.	
0051-0270		Farmington	Naztec	45	RTE 4	051-228		N	Advanced sewer relocation construction project on Route 4, as a breakout from parent project 51-260.	
0173-0420	Fairfield,Milford,New Canaan,Norwalk,Shelton,Trumbull,Weston,Westport	Milford	Naztec	20	RTE 1	083-265	Frederick L KULAKOWSKI	N	TRAFFIC SIGNAL INSTALLATION AND REVISION AT VARIOUS LOCATIONS IN DISTRICT 3 FOR FY2014. 100% STATE FUNDING FIF-ROAD 10-11-12 B. ADELSTEIN	20-AUG-2014
0173-0420	Fairfield,Milford,New Canaan,Norwalk,Shelton,Trumbull,Weston,Westport	Milford	Naztec	20	RTE 1	083-254	Frederick L KULAKOWSKI	N	TRAFFIC SIGNAL INSTALLATION AND REVISION AT VARIOUS LOCATIONS IN DISTRICT 3 FOR FY2014. 100% STATE FUNDING FIF-ROAD 10-11-12 B. ADELSTEIN	20-AUG-2014
0173-0420	Fairfield,Milford,New Canaan,Norwalk,Shelton,Trumbull,Weston,Westport	Milford	Naztec	20	RTE 1	083-218	Frederick L KULAKOWSKI	N	TRAFFIC SIGNAL INSTALLATION AND REVISION AT VARIOUS LOCATIONS IN DISTRICT 3 FOR FY2014. 100% STATE FUNDING FIF-ROAD 10-11-12 B. ADELSTEIN	20-AUG-2014
0171-0382		Hartford	Transyt	45	RTE 44	063-203	David M FABRY	N	Provide accessible pedestrian signals (APS) and detectors at approximately 50 state-maintained traffic control signals in District 1. FAP# FOR (CN) PEDS(179) B. Adelstein 7-21-14.	29-APR-2015
0171-0381	Berlin,East Hartford,Hartford,Manchester,Middletown,Rocky Hill,Vernon,West Hartford	Rocky Hill	Naztec	64	RTE 99	118-204	David M FABRY	N	Provide accessible pedestrian signals (APS) and detectors at approximately 25 state-maintained traffic control signals in District 1. FAP# FOR (CN) PEDS(178) B. Adelstein 7-21-14.	12-NOV-2014
0171-0382		Windsor	Naztec	24	RTE 159	164-214	David M FABRY	N	Provide accessible pedestrian signals (APS) and detectors at approximately 50 state-maintained traffic control signals in District 1. FAP# FOR (CN) PEDS(179) B. Adelstein 7-21-14.	29-APR-2015
0171-0382		Rocky Hill / Wethersfield	Transyt	24	RTE 99	159-235	David M FABRY	N	Provide accessible pedestrian signals (APS) and detectors at approximately 50 state-maintained traffic control signals in District 1. FAP# FOR (CN) PEDS(179) B. Adelstein 7-21-14.	29-APR-2015
0063-0702		Windsor	Naztec	24	RTE 159	164-229		Y	Mill 2 5/8" & place 2" PMA+5/8" Ultra-thin Bonded (UTB) HMA NB & SB incl. Ramps R-841 & R-182; Mill 5/8" and place 5/8" UTB HMA NB & SB INC ALL RAMPS [Federal Oversight - 6/10/14]. FAP# FOR CN = 0913(175) B. Adelstein 11-20-14.	11-NOV-2014
0171-0382		Farmington / West Hartford	Transyt	54	RTE 71	155-238	David M FABRY	N	Provide accessible pedestrian signals (APS) and detectors at approximately 50 state-maintained traffic control signals in District 1. FAP# FOR (CN) PEDS(179) B. Adelstein 7-21-14.	29-APR-2015
0171-0381	Berlin,East Hartford,Hartford,Manchester,Middletown,Rocky Hill,Vernon,West Hartford	Wethersfield	Transyt	25	RTE 99	159-222	David M FABRY	N	Provide accessible pedestrian signals (APS) and detectors at approximately 25 state-maintained traffic control signals in District 1. FAP# FOR (CN) PEDS(178) B. Adelstein 7-21-14.	12-NOV-2014
0171-0382		Wethersfield	Transyt	25	RTE 99	159-203	David M FABRY	N	Provide accessible pedestrian signals (APS) and detectors at approximately 50 state-maintained traffic control signals in District 1. FAP# FOR (CN) PEDS(179) B. Adelstein 7-21-14.	29-APR-2015
0171-0382		Wethersfield	Transyt	25	RTE 99	159-243	David M FABRY	N	Provide accessible pedestrian signals (APS) and detectors at approximately 50 state-maintained traffic control signals in District 1. FAP# FOR (CN) PEDS(179) B. Adelstein 7-21-14.	29-APR-2015
0171-0382		Wethersfield	Transyt	25	RTE 99	159-209	David M FABRY	N	Provide accessible pedestrian signals (APS) and detectors at approximately 50 state-maintained traffic control signals in District 1. FAP# FOR (CN) PEDS(179) B. Adelstein 7-21-14.	29-APR-2015
0156-0170	WEST HAVEN	Orange / West Haven	Transyt	57	RTE 1	156-217	Andy Fesenmeyer	N	INTERSECTION IMPROVEMENT ROUTE 1 @ ROUTE 122 IN WEST HAVEN. FAP# FOR CN = 0001(279) B. Adelstein 6-12-14.	
0171-0381	Berlin,East Hartford,Hartford,Manchester,Middletown,Rocky Hill,Vernon,West Hartford	Hartford	Transyt	45	RTE 44	063-277	David M FABRY	N	Provide accessible pedestrian signals (APS) and detectors at approximately 25 state-maintained traffic control signals in District 1. FAP# FOR (CN) PEDS(178) B. Adelstein 7-21-14.	12-NOV-2014
0171-0382		Wethersfield	Transyt	25	RTE 99	159-220	David M FABRY	N	Provide accessible pedestrian signals (APS) and detectors at approximately 50 state-maintained traffic control signals in District 1. FAP# FOR (CN) PEDS(179) B. Adelstein 7-21-14.	29-APR-2015

# PROJECTS IN CONSTRUCTION AS OF 11/19/2015

Project	Project Location	System Town	System	System ID	Route	Signal	Project Manager	FHWA	Project Description	FDP
0036-0182	DERBY	Derby / Orange	Transyt	50	RTE 34	036-205	Louis D BACHO	N	REHABILITATION OF BRIDGE # 00947 ROUTE 34 OVER NAUGATUCK RIVER, DERBY. 100% STATE FUNDING. 6-25-12 B. ADELSTEIN	
0173-0412	Bridgeport,Derby,East Haven,Fairfield,Guilford	Bridgeport	Transyt	16	RTE 130	015-317	Frederick L KULAKOWSKI	N	INSTALLATION AND REVISION OF TRAFFIC CONTROL SIGNALS AT SLOSSS LOCATIONS IN DISTRICT 3 FOR FY2011. FAP# FOR (CN) 000R(772) B. Adelstein 12-17-12. Programmatic CE 9/28/12.	
0173-0404	Bridgeport,Derby,East Haven,Fairfield,Guilford	Fairfield	Naztec	10	RTE 1	050-206	Frederick L KULAKOWSKI	N	District 3 TRAFFIC SIGNAL INSTALLATION AND REVISION AT VARIOUS LOCATIONS FOR FY 2010. 100% STATE FIF FUNDS PER KELLY CAIN ON 3-17-11. Programmatic CE 9/28/12.	
0173-0404	Bridgeport,Derby,East Haven,Fairfield,Guilford	Guilford	Transyt	27	RTE 1	059-204	Frederick L KULAKOWSKI	N	District 3 TRAFFIC SIGNAL INSTALLATION AND REVISION AT VARIOUS LOCATIONS FOR FY 2010. 100% STATE FIF FUNDS PER KELLY CAIN ON 3-17-11. Programmatic CE 9/28/12.	
0174-0348	Canton, Litchfield, New Milford, Newtown, Waterbury	Derby / Orange	Transyt	50	RTE 34	036-210	Mark F MAKUCH	N	TRAFFIC SIGNAL INSTALLATION AND REVISION AT VARIOUS LOCATIONS IN DISTRICT 4 FOR FY 2010 100% STATE FIF FUNDS PER KELLY CAIN ON 3-17-11.	
0173-0418	Bridgeport,Orange,Stratford,Westport	Bridgeport / Stratford	Transyt	31	RTE 1	015-231	Frederick L KULAKOWSKI	N	INSTALLATION AND REVISION OF TRAFFIC CONTROL SIGNALS AT SLOSSS LOCATIONS IN DISTRICT 3 FOR FY 2014. FAP # 000R(794), V. Smith 5.24.2013.	14-MAY-2014
0173-0404	Bridgeport,Derby,East Haven,Fairfield,Guilford	Fairfield	Naztec	10	RTE 1	050-207	Frederick L KULAKOWSKI	N	District 3 TRAFFIC SIGNAL INSTALLATION AND REVISION AT VARIOUS LOCATIONS FOR FY 2010. 100% STATE FIF FUNDS PER KELLY CAIN ON 3-17-11. Programmatic CE 9/28/12.	
0092-0640	NEW HAVEN	New Haven	Naztec	67	RTE 10	092-315	Scott Bushee	N	New Haven-Rt 10 @ Lamberton St. Widen Route 10 to provide a southbound left-turn lane at Lamberton Street and install a traffic signal at the intersection. FAP# FOR (CN) 0010(119) B. Adelstein 3-25-10.	
0173-0418	Bridgeport,Orange,Stratford,Westport	Bridgeport / Fairfield	Transyt	3	RTE 1	015-213	Frederick L KULAKOWSKI	N	INSTALLATION AND REVISION OF TRAFFIC CONTROL SIGNALS AT SLOSSS LOCATIONS IN DISTRICT 3 FOR FY 2014. FAP # 000R(794), V. Smith 5.24.2013.	14-MAY-2014
0173-0404	Bridgeport,Derby,East Haven,Fairfield,Guilford	Guilford	Transyt	27	RTE 1	059-213	Frederick L KULAKOWSKI	N	District 3 TRAFFIC SIGNAL INSTALLATION AND REVISION AT VARIOUS LOCATIONS FOR FY 2010. 100% STATE FIF FUNDS PER KELLY CAIN ON 3-17-11. Programmatic CE 9/28/12.	
0173-0404	Bridgeport,Derby,East Haven,Fairfield,Guilford	Norwalk	Naztec	5	RTE 1	102-218	Frederick L KULAKOWSKI	N	District 3 TRAFFIC SIGNAL INSTALLATION AND REVISION AT VARIOUS LOCATIONS FOR FY 2010. 100% STATE FIF FUNDS PER KELLY CAIN ON 3-17-11. Programmatic CE 9/28/12.	
0173-0418	Bridgeport,Orange,Stratford,Westport	Bridgeport / Stratford	Transyt	31	RTE 1	015-274	Frederick L KULAKOWSKI	N	INSTALLATION AND REVISION OF TRAFFIC CONTROL SIGNALS AT SLOSSS LOCATIONS IN DISTRICT 3 FOR FY 2014. FAP # 000R(794), V. Smith 5.24.2013.	14-MAY-2014
0173-0412	Bridgeport,Derby,East Haven,Fairfield,Guilford	Norwalk	Naztec	4	RTE 1	102-204	Frederick L KULAKOWSKI	N	INSTALLATION AND REVISION OF TRAFFIC CONTROL SIGNALS AT SLOSSS LOCATIONS IN DISTRICT 3 FOR FY2011. FAP# FOR (CN) 000R(772) B. Adelstein 12-17-12. Programmatic CE 9/28/12.	
0173-0404	Bridgeport,Derby,East Haven,Fairfield,Guilford	Norwalk	Naztec	5	RTE 1	102-217	Frederick L KULAKOWSKI	N	District 3 TRAFFIC SIGNAL INSTALLATION AND REVISION AT VARIOUS LOCATIONS FOR FY 2010. 100% STATE FIF FUNDS PER KELLY CAIN ON 3-17-11. Programmatic CE 9/28/12.	
0173-0418	Bridgeport,Orange,Stratford,Westport	Westport	Naztec	8	RTE 1	158-215	Frederick L KULAKOWSKI	N	INSTALLATION AND REVISION OF TRAFFIC CONTROL SIGNALS AT SLOSSS LOCATIONS IN DISTRICT 3 FOR FY 2014. FAP # 000R(794), V. Smith 5.24.2013.	14-MAY-2014
0173-0404	Bridgeport,Derby,East Haven,Fairfield,Guilford	Norwalk / Wilton	Naztec	29	RTE 7	102-222	Frederick L KULAKOWSKI	N	District 3 TRAFFIC SIGNAL INSTALLATION AND REVISION AT VARIOUS LOCATIONS FOR FY 2010. 100% STATE FIF FUNDS PER KELLY CAIN ON 3-17-11. Programmatic CE 9/28/12.	
0173-0404	Bridgeport,Derby,East Haven,Fairfield,Guilford	Norwalk / Wilton	Naztec	29	RTE 7	102-294	Frederick L KULAKOWSKI	N	District 3 TRAFFIC SIGNAL INSTALLATION AND REVISION AT VARIOUS LOCATIONS FOR FY 2010. 100% STATE FIF FUNDS PER KELLY CAIN ON 3-17-11. Programmatic CE 9/28/12.	
0173-0418	Bridgeport,Orange,Stratford,Westport	Stratford	Naztec	13	RTE 1	138-252	Frederick L KULAKOWSKI	N	INSTALLATION AND REVISION OF TRAFFIC CONTROL SIGNALS AT SLOSSS LOCATIONS IN DISTRICT 3 FOR FY 2014. FAP # 000R(794), V. Smith 5.24.2013.	14-MAY-2014
0174-0362	Ansonia,Bethel,Burlington,Danbury,Farmington,Newtown,Seymour,Waterbury	Danbury	Naztec	34	RTE 806	034-232	Erika B LINDBERG	N	TRAFFIC SIGNAL INSTALLATION AND REVISION AT VARIOUS LOCATIONS IN DISTRICT 4 FOR FY2014. 100% STATE FUNDING FIF-ROAD 10-11-12 B. ADELSTEIN	
0173-0418	Bridgeport,Orange,Stratford,Westport	Stratford	Naztec	17	RTE 1	138-237	Frederick L KULAKOWSKI	N	INSTALLATION AND REVISION OF TRAFFIC CONTROL SIGNALS AT SLOSSS LOCATIONS IN DISTRICT 3 FOR FY 2014. FAP # 000R(794), V. Smith 5.24.2013.	14-MAY-2014
0173-0418	Bridgeport,Orange,Stratford,Westport	Westport	Naztec	25	RTE 1	158-229	Frederick L KULAKOWSKI	N	INSTALLATION AND REVISION OF TRAFFIC CONTROL SIGNALS AT SLOSSS LOCATIONS IN DISTRICT 3 FOR FY 2014. FAP # 000R(794), V. Smith 5.24.2013.	14-MAY-2014
0173-0404	Bridgeport,Derby,East Haven,Fairfield,Guilford	Guilford	Transyt	27	RTE 1	059-205	Frederick L KULAKOWSKI	N	District 3 TRAFFIC SIGNAL INSTALLATION AND REVISION AT VARIOUS LOCATIONS FOR FY 2010. 100% STATE FIF FUNDS PER KELLY CAIN ON 3-17-11. Programmatic CE 9/28/12.	



DEPARTMENT OF TRANSPORTATION

# APPENDIX E:

# FEDERAL REGULATIONS

---



# INTELLIGENT TRANSPORTATION SYSTEMS (ITS) / OPERATIONS PROCESS

## Background

### → Intelligent Transportation Systems (ITS)

Federal regulations (23 CFR 940) define ITS as “...electronics, communications, or information processing used singly or in combination, to improve the efficiency or safety of a surface transportation system.” This is a broad definition, covering the range from small, simple devices up to large and complex systems. In addition to this definition, ITS systems should include comprehensive management strategies and apply technologies in an integrated manner. The purpose of ITS integration is to share information and reduce redundant spending between jurisdictions. ITS integration includes both technical and inter-agency aspects of system development. An ITS Project is defined as “any project that in whole or in part funds the acquisition of technologies or systems of technologies that provide or significantly contribute to the provision of one or more ITS user services as defined in the National ITS Architecture.”

## Funding Programs

### → CMAQ

Section 1808 of SAFETEA-LU expands eligibility of projects or programs that improve transportation systems management and operations that mitigate congestion and improve air quality. This could include establishment or operation of a traffic monitoring, management, and control facility. Projects that improve traffic flow, including efforts to provide signal systemization, streamline intersections, improve transportation systems management and operations that mitigate congestion, improving incident and emergency response and real time traveler information are could also eligible.

### → NHPP

The National Highway Performance Program supports funding for capital and operating costs in the ITS program area. Capital and operating costs for traffic and traveler information monitoring, management, and control facilities and programs are eligible using NHPP funds. In addition, infrastructure-based intelligent transportation systems capital improvements (project or activity must be associated with the NHS) are eligible under this program.

### → STP

The Surface Transportation Program provides Federal-aid eligibility for capital and operating costs for traffic monitoring, management, and control facilities and programs. STP is also eligible for infrastructure-based ITS capital improvements.

## Types of ITS Projects

### → Major Intelligent Transportation Systems Projects (both NHS and non-NHS)

A major ITS project is one that implements in whole or a part of a statewide or local agency ITS initiative that is new technology, multi-jurisdictional, multi-modal, or affects statewide or local agency integration of ITS systems. They have one (or more) of the following characteristics:

- 1.) Multi-jurisdictional or multi-modal
- 2.) Custom software is required
- 3.) Hardware and communications are “cutting-edge” or not in common use
- 4.) New interfaces to other systems are required
- 5.) System requirements are not detailed or not fully documented
- 6.) Operating procedures are not detailed or not fully documented
- 7.) Technology service life shortens project life-cycle

The project manager must submit a Systems Engineering (SE) Analysis Form (SEAFORM) for further determination by the FHWA. Upon approval of the SEAFORM, the project manager must submit a Systems Engineering Management Plan (SEMP) for all major ITS projects under the FHWA full oversight to the FHWA for approval to advance to final design.

# INTELLIGENT TRANSPORTATION SYSTEMS (ITS) / OPERATIONS PROCESS

## → Minor ITS Projects

These projects do not require a Systems Engineering Management Plan approval by the FHWA. However, a SEAFORM must be filled out and approved prior to Preliminary Engineering.

Minor ITS projects are often referred to as ITS infrastructure expansion. Standard Plans, Standard Specifications, and Standard Special Provisions are well documented. They will have all of the following characteristics:

- 1.) Single jurisdiction; single transportation mode (highway, transit or rail)
- 2.) No software creation; commercial-off-the-shelf (COTS) or proven software
- 3.) Proven COTS hardware & communications technology
- 4.) No new interfaces
- 5.) System requirements fully detailed in writing
- 6.) Operating procedures fully detailed in writing
- 7.) Project life-cycle not shortened by technology service life

Projects that fit the above definition and characteristics are “minor” projects regardless of project costs. It should be recognized that, although there may be no “formal” Systems Engineering requirements or oversight, good procurement practices should ensure detailed systems requirements and specifications plus a thorough acceptance plan. These items are elements of the SE process; hence, this is one example of scaling down the SE process to fit the needs of a minor project.

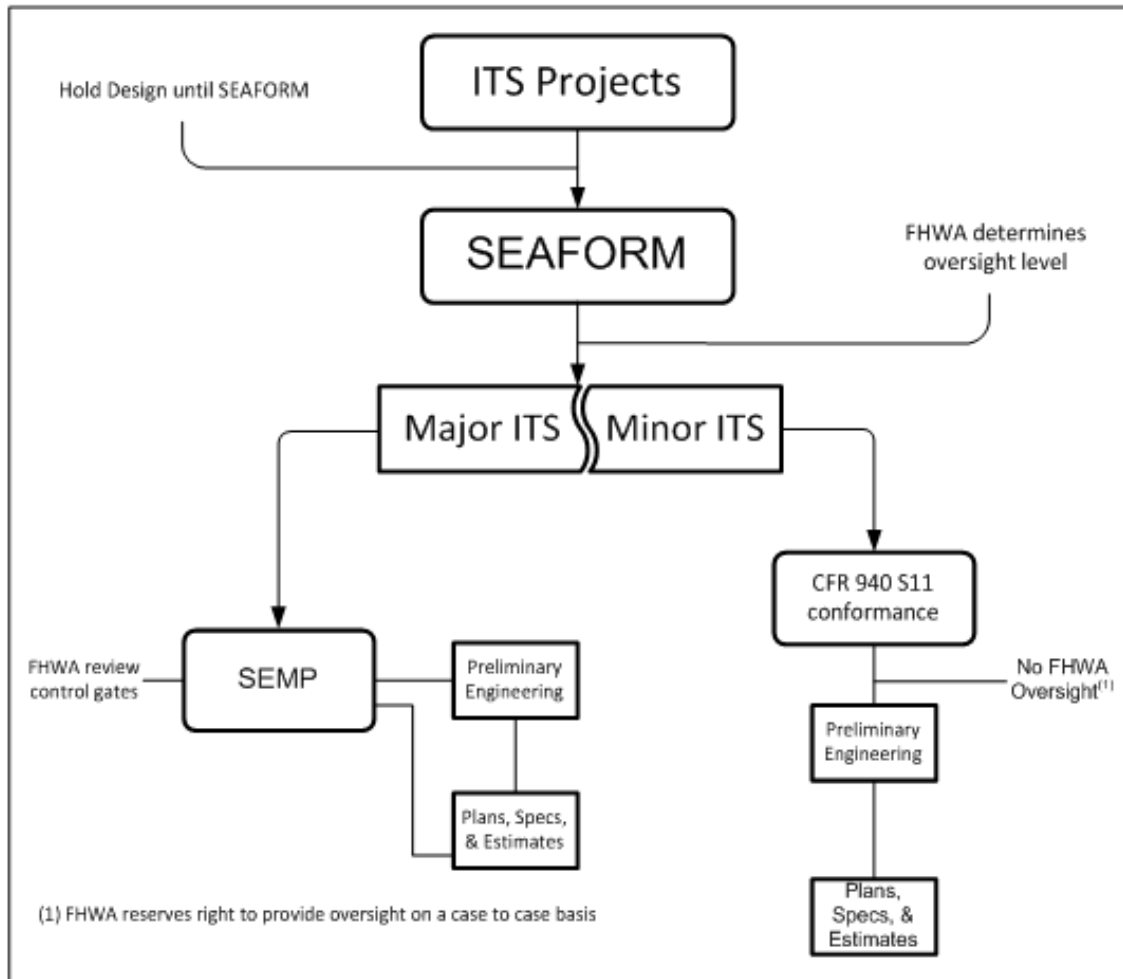
## Operating Procedures

All ITS projects shall follow the process flow shown in the diagram below. Application and control of the Systems Engineering process is a key reason for the PE process as shown below. Federal-aid ITS projects shall follow the regular federal-aid procedures as detailed in the Project Oversight Chapters. The completion of the SEAFORM prior to the PE obligation and authorization procedure assure conformity with the national architecture regulation.



# INTELLIGENT TRANSPORTATION SYSTEMS (ITS) / OPERATIONS PROCESS

## Intelligent Transportation Systems Process



### → Major ITS Projects - Procedures

- 1.) The Project Manager (PM) forwards the SEAFORM to the FHWA for concurrence and oversight determination.
- 2.) The FHWA reviews the SEAFORM for the FHWA oversight determination, comments on the SEAFORM, and sends the information back to the PM.
- 3.) The PM revises the SEAFORM upon receipt from the FHWA. If the project is determined to be a Major ITS project and a Project of FHWA Division Interest, the PM will submit a SEMP and the Systems Engineering process to the FHWA for review and approval.
- 4.) The FHWA notifies the PM that they approved the SEMP and Systems Engineering process.
- 5.) Upon receiving final SEMP and process product(s) approval, the PM may proceed with PE.

### → Construction

1. If the ITS project includes activities defined as construction; the PM must submit a PS&E package requesting construction authorization. The request includes the necessary federal-aid paperwork and requirements in accordance with 23 CFR 635.
2. Beyond this point, normal federal-aid procedures apply for completing the project.

# INTELLIGENT TRANSPORTATION SYSTEMS (ITS) / OPERATIONS PROCESS

## → Minor ITS Projects - Procedures

The procedures for minor ITS projects will follow the traditional federal aid PE procedures. ITS documentation remains a requirement in accordance with the CTDOT oversight requirements. However, no SEMP review and the FHWA review are required.

1. The Project Manager (PM) forwards the SEAFORM to the FHWA for concurrence and oversight level.
2. The FHWA reviews the SEAFORM for the FHWA oversight determination, comments on the SEAFORM, and sends the information back to the PM.
3. The PM revises the SEAFORM upon receipt from the FHWA. If the project is determined to be a Minor ITS project, the PM will proceed with PE

## → ITS in Traditional Roadway and Other Federal-aid Projects

The procedure for any ITS in traditional roadway or other Federal aid projects shall follow the Operating Procedures described above.

## Project Oversight

### → ITS Regional (Statewide) Architecture – 23 CFR 940.9

The applicable regulation for ITS projects is contained in 23 CFR 940, entitled Intelligent Transportation System Architecture and Standards. This regulation requires States and metropolitan areas to develop regional architectures and to follow a systems engineering process for ITS project development whenever Federal-aid funds are utilized for ITS deployment. ITS projects are defined in 23 CFR 940.

Connecticut has developed a Statewide architecture in accordance with the requirements in 23 CFR 940.9. This Statewide architecture shall be a guide to the development of ITS projects and programs, consistent with ITS strategies and projects contained in applicable transportation plans.

The State shall develop and implement procedures and responsibilities for maintaining the regional ITS architecture as needs evolve within the State.

### → Project Implementation – 23 CFR 940.11

All ITS projects funded with highway trust funds shall be based on systems engineering analysis, and the analysis should be on a scale commensurate with the project scope.

The systems engineering analysis shall meet the minimum requirements in 23 CFR 940.11, (c), 1-7.

All ITS projects entering final design shall accommodate the interface requirements and information exchanges as specified in the Statewide ITS architecture. If the final design is inconsistent with the Statewide architecture, then the Statewide architecture shall be updated as provided in 23 CFR 940.9.

All ITS projects funded with highway trust funds shall use applicable ITS standards and interoperability that have been adopted through rulemaking by the DOT.

## → Project Administration – 23 CFR 940.13

Prior to authorization of highway trust funds for construction or implementation of ITS projects, compliance with 23 CFR 940.11 shall be demonstrated.

Compliance with this part will be monitored under Federal-aid oversight procedures as provided in 23 U.S.C. 106 and 133.

Determinations if the Project is of FHWA Division Interest (PODI) for ITS projects, and the FHWA approval authority will be accomplished in accordance with the framework in the Project Oversight, Project Development, and Project Construction Chapters. These determinations will also consider the process flow for ITS projects described in the “Operating Procedures” section for determining the FHWA oversight on a project case by case basis.

## Program Evaluation

Periodic review of Operating Procedures between the FHWA and the Department may be conducted, when necessary, to identify areas for greater efficiency and improvements to the ITS program.

SEAFORM and SEMP approvals shall be tracked and compared to provide exemplary practices.

## Operations Program Activities

Operations program activities are eligible for funding with the use of NHPP and STP federal-aid funds and also with the use of CMAQ funds for a period not to exceed three years from the date of deployment of an ITS system or project. Operations projects are approved and authorized for Federal-aid funding using regular federal-aid procedures. The below the CTDOT and other State agency operations activities have been previously approved for Federal-aid funding by the Connecticut Division.

The CTDOT will utilize Federal-aid funds to operate the Newington and Bridgeport Highway Operations Centers (HOC). These centers are staffed by system operators on a 24 hour-a-day/7 day-a-week basis. Consultant staff responsible for operating the Bridgeport HOC are procured using the CTDOT’s qualifications based selection process. In addition, engineering staff in the CTDOT Office of Highway Operations will charge their payroll to these Federally-funded projects when working on Operations Center assignments or tasks.

Staff that operate and maintain the CTDOT CHAMP service patrol vehicles will charge their payroll to the Federally-funded Highway Operations Center projects, as appropriate. In addition, Office of Maintenance personnel that respond to after-hour calls involving traffic incidents or traffic signal malfunctions will continue to charge their time to the Highway Operations Center projects.

Federal funds will continue to be provided to the Connecticut State Police for the provision of enhanced incident management patrols along the I-95 Corridor in southern and southwestern Connecticut. These patrols ensure the timely response and clearance of traffic incidents along this corridor.

## References

- SAFETEA-LU Sections: 1201, 1808, 5101(a), 5211, 5305, 5306, 5310(8)
- 23 U.S.C. 103, 149, 511
- 23 CFR 940

# INTELLIGENT TRANSPORTATION SYSTEMS (ITS) / OPERATIONS PROCESS

## *ITS Process Summary for Projects*

Activity	CTDOT Action	FHWA Action	Remarks
SEAFORM and/or SEMP for Systems Engineering Analysis Process	Prepare and Submit	Review and Approve (14 Days)	Begin Preliminary Engineering
Copies of all project reports, quarterly progress reports, correspondence, meeting announcements and minutes	Prepare and Submit for FHWA Oversight Projects Only	Information	Reports and Updates
Update Regional ITS Architecture	Prepare and Submit	Review and Approve (14 Days)	Updated Regional ITS Architecture
ITS Design Project Submittals	See Project Development and Project Construction Chapters		
ITS Construction Project Submittals			

## *ITS Process for Programs*

Activity	Authority	CTDOT Action	FHWA Action	Remarks
Congestion Partnerships Assessment	Annual Memo from HQ	Complete annually with FHWA by 1-Jul	Submit to HQ	
Operations Support Program	Annual Memo from HQ	Complete annually with FHWA by 1-Jul	Submit to HQ	Eligibility determination made by HQ. July 1 date for approval to issue funding for current FY.
Traffic Incident Management Self-Assessment	Annual Memo from HQ	Complete annually with FHWA by 1-Jul	Submit to HQ	
Intelligent Transportation System Architecture & Standards	23 CFR 940	Prepare & Submit	Review and Approve	



DEPARTMENT OF TRANSPORTATION

# APPENDIX F:

# RESOURCES

---



## APPENDIX F - RESOURCES

### **Connecticut Statewide ITS Architecture:**

[http://www.consystem.com/ct/web/\\_regionhome.htm](http://www.consystem.com/ct/web/_regionhome.htm)

### **CRCOG Traffic Signal Systems Handbook:**

<http://www.crcog.org/publications/TransportationDocs/ITS/CRCOG%20Traffic%20Signal%20Systems%20Handbook%20V3%20%20FINAL.PDF>

### **FHWA Signal Timing Manual:**

[http://www.ops.fhwa.dot.gov/publications/fhwahop08024/fhwa\\_hop\\_08\\_024.pdf](http://www.ops.fhwa.dot.gov/publications/fhwahop08024/fhwa_hop_08_024.pdf)

### **Improving Traffic Signal Management & Operations:**

[http://www.ops.fhwa.dot.gov/publications/fhwahop09055/fhwa\\_hop\\_09\\_055.pdf](http://www.ops.fhwa.dot.gov/publications/fhwahop09055/fhwa_hop_09_055.pdf)

### **Signal Timing Under Saturated Conditions:**

<http://ops.fhwa.dot.gov/publications/fhwahop09008/fhwahop09008.pdf>

### **Systems Engineering for ITS - FHWA 2007:**

<http://ops.fhwa.dot.gov/publications/seitsguide/seguide.pdf>

### **Traffic Signal Operations and Maintenance Staffing Guidelines:**

<http://www.ops.fhwa.dot.gov/publications/fhwahop09006/fhwahop09006.pdf>

### **Traffic Signal Timing & Operations Strategies:**

[http://ops.fhwa.dot.gov/arterial\\_mgmt/tst\\_ops.htm](http://ops.fhwa.dot.gov/arterial_mgmt/tst_ops.htm)







Prepared by IBI Group