

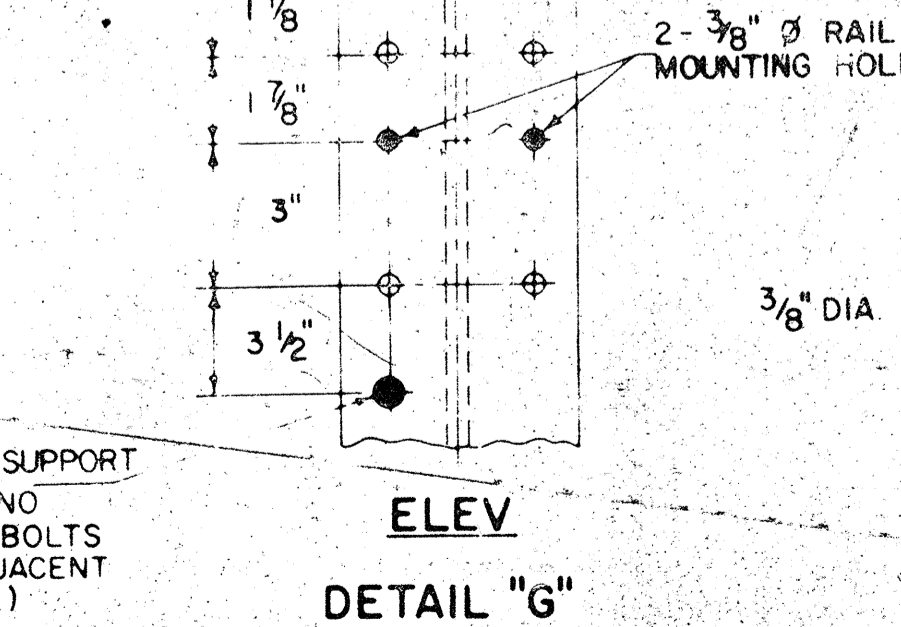
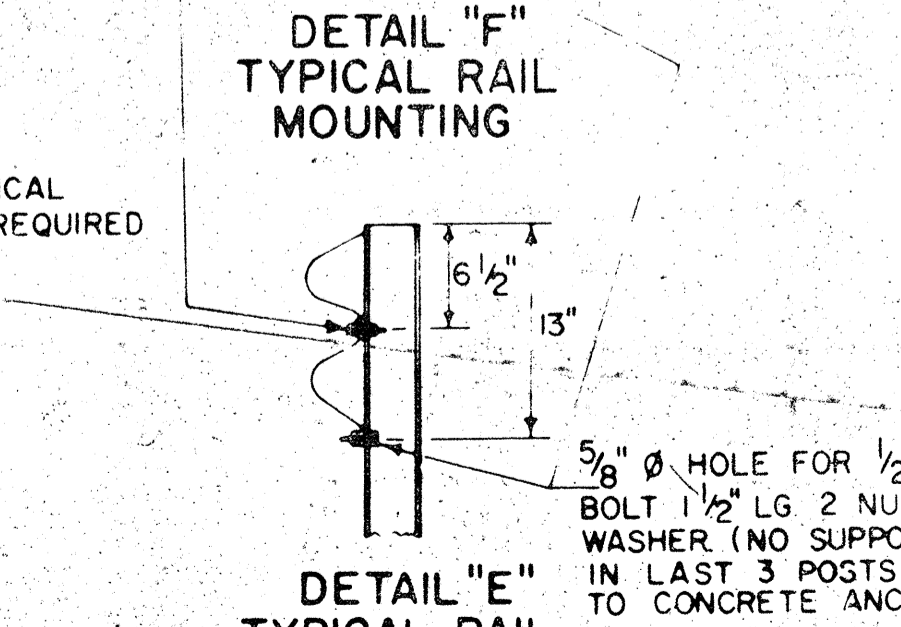
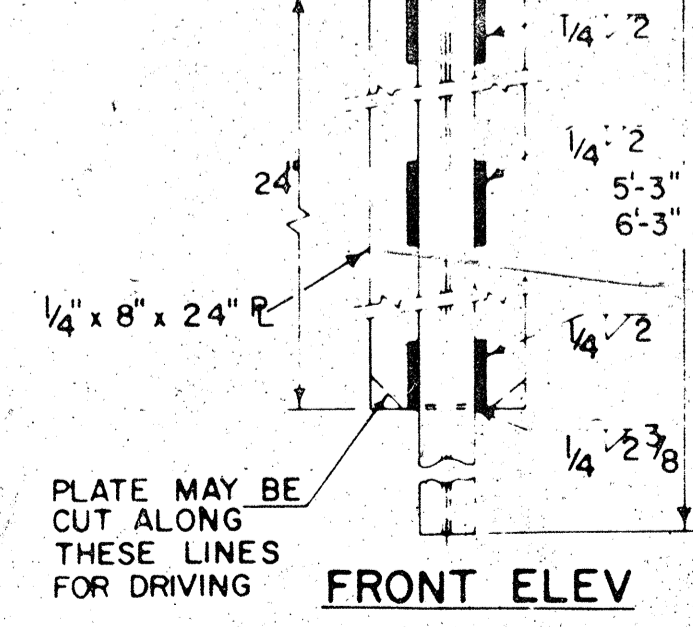
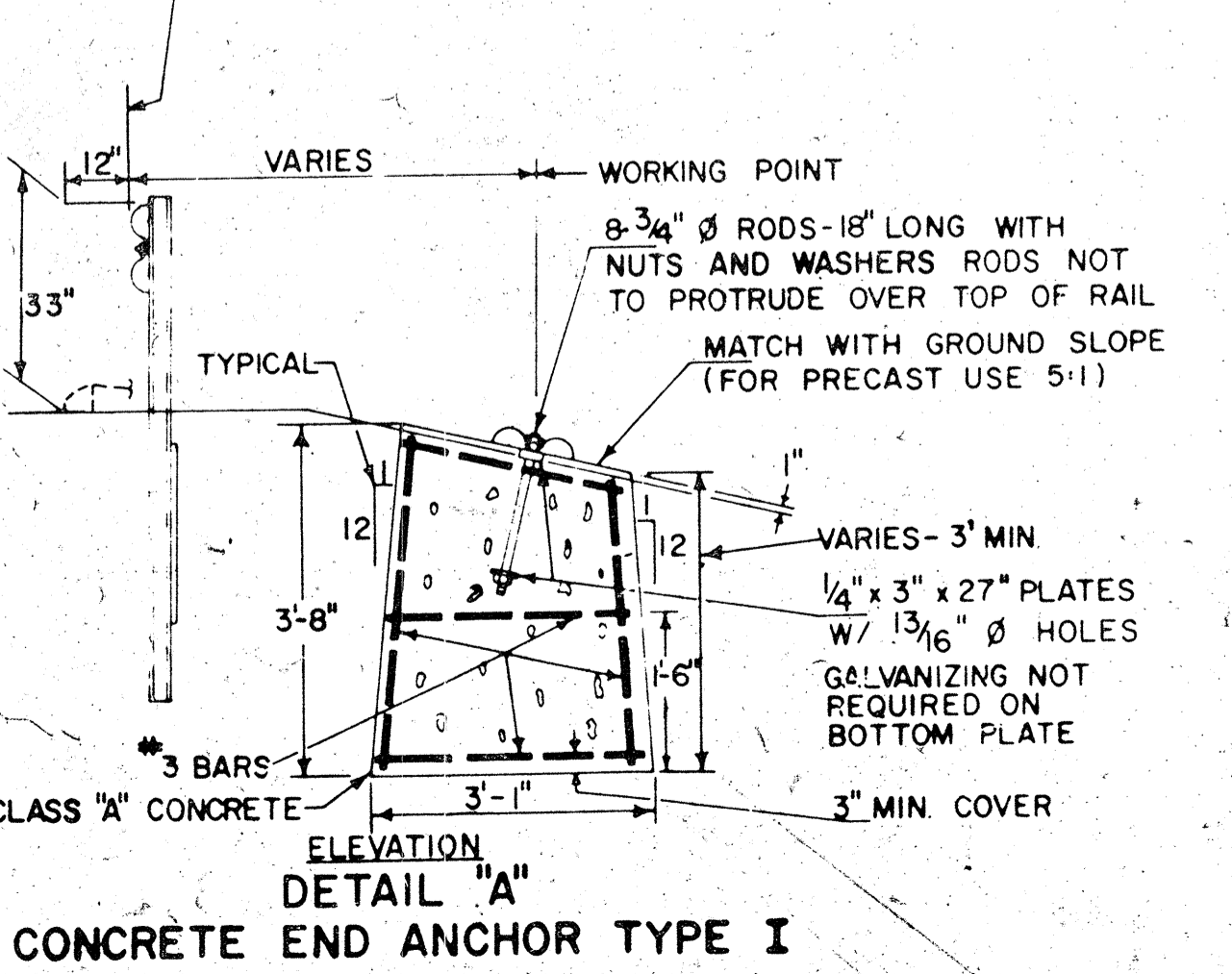
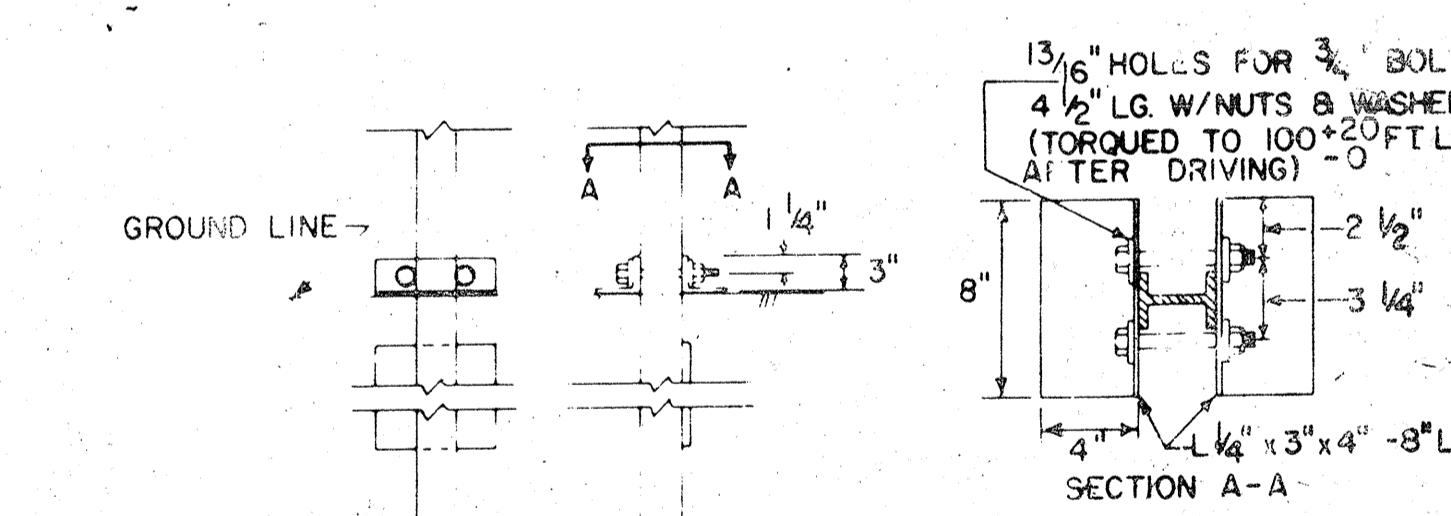
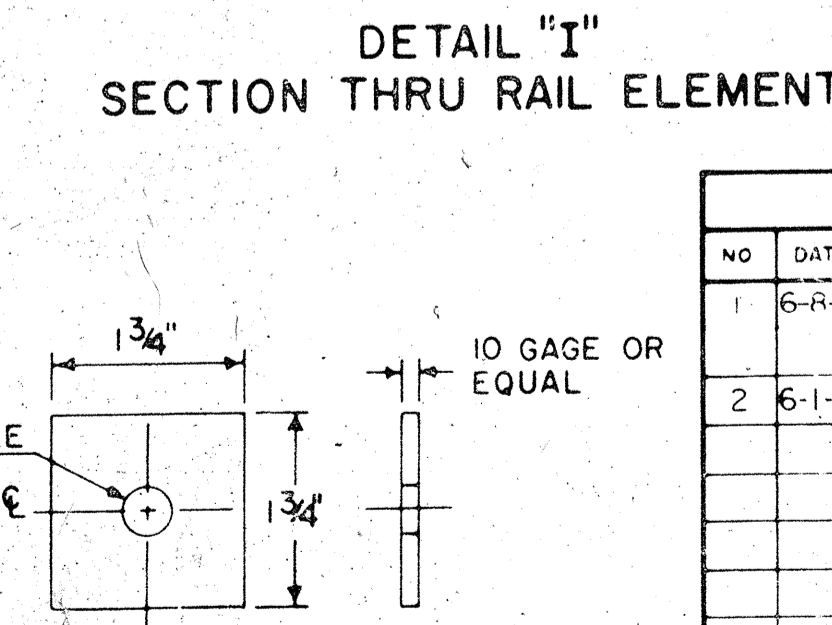
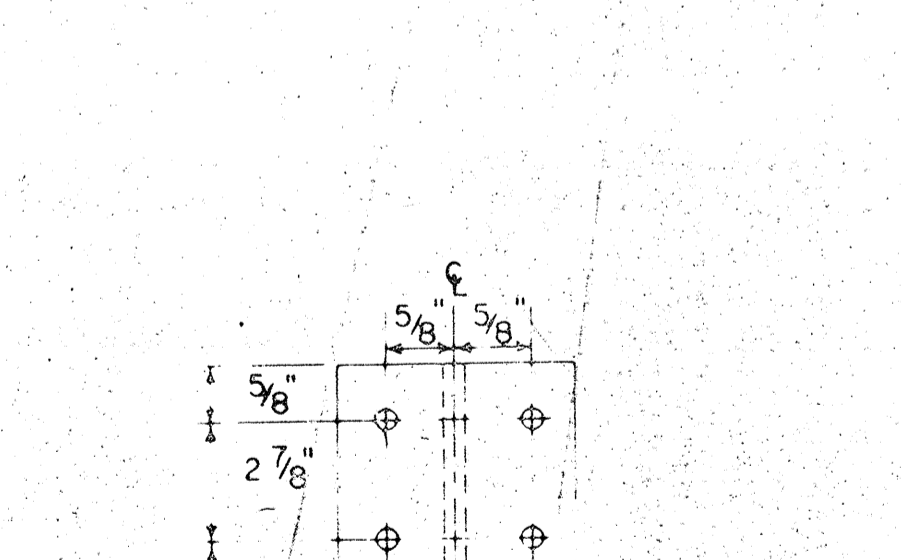
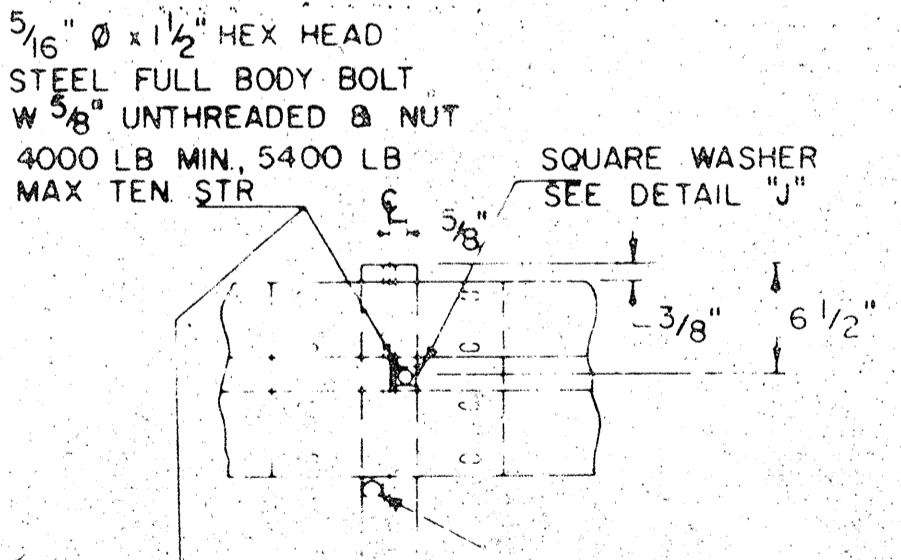
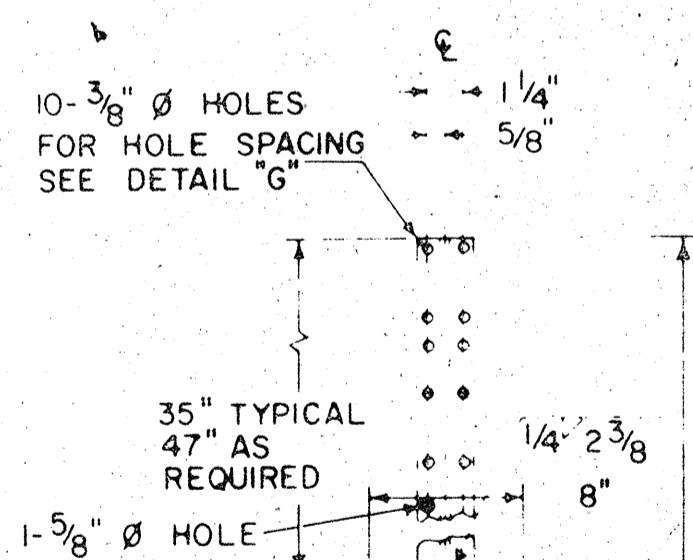
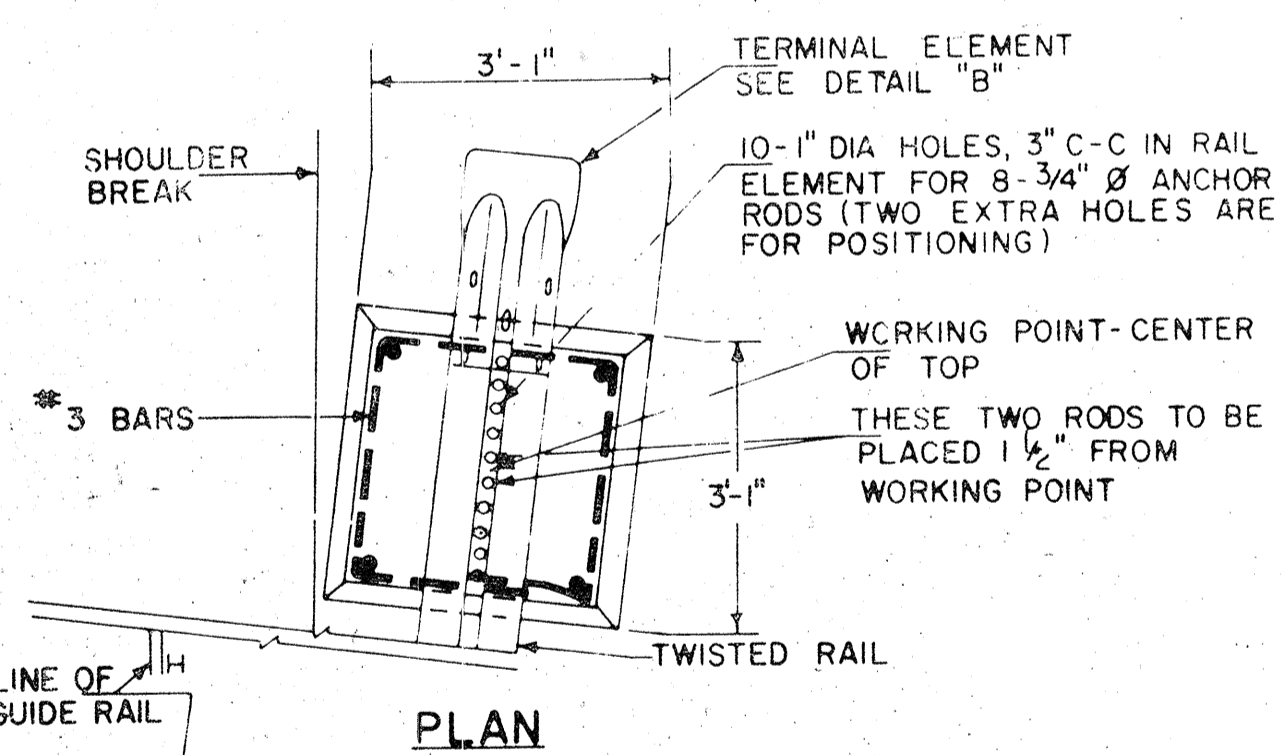
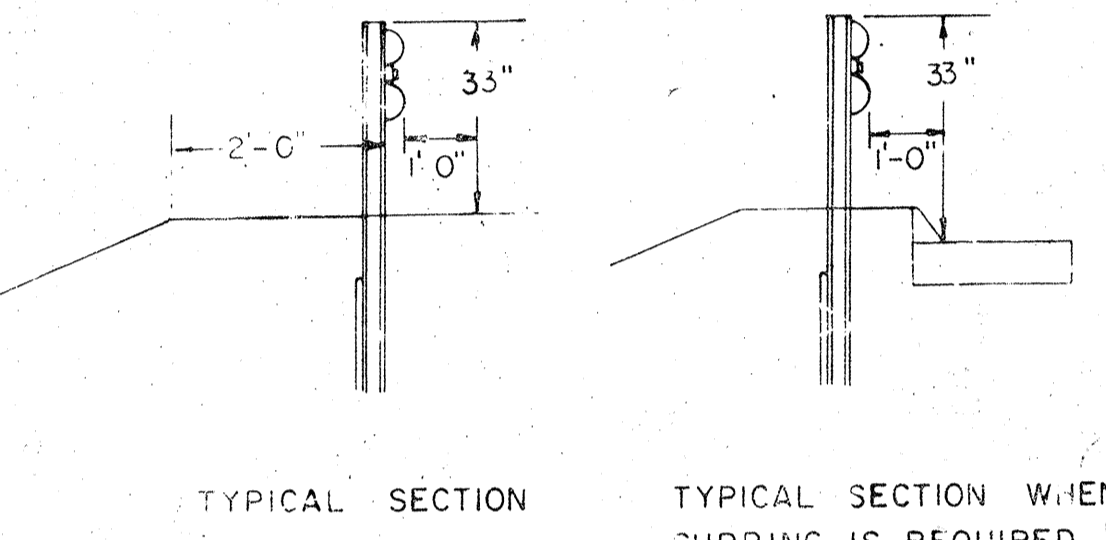
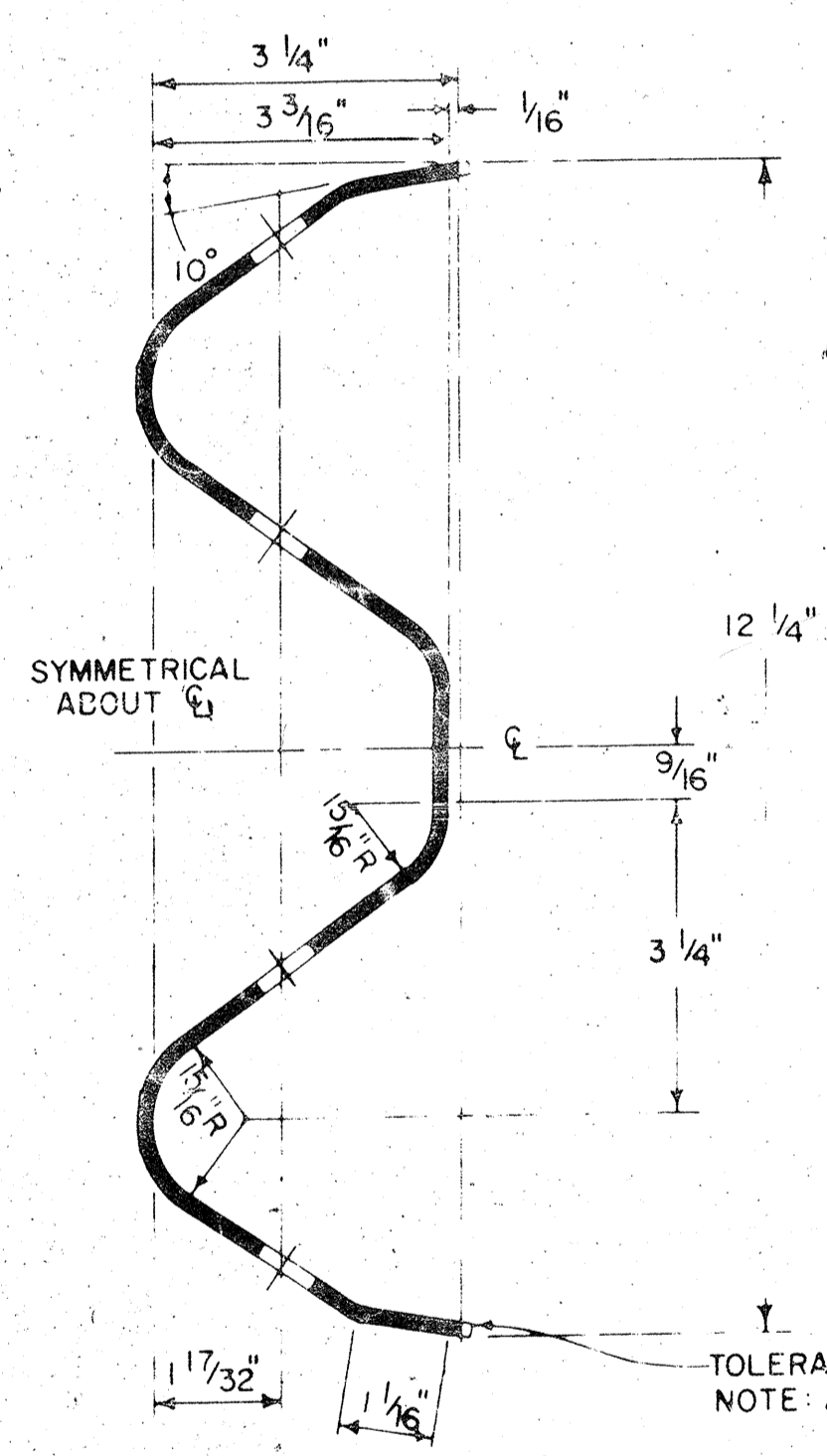
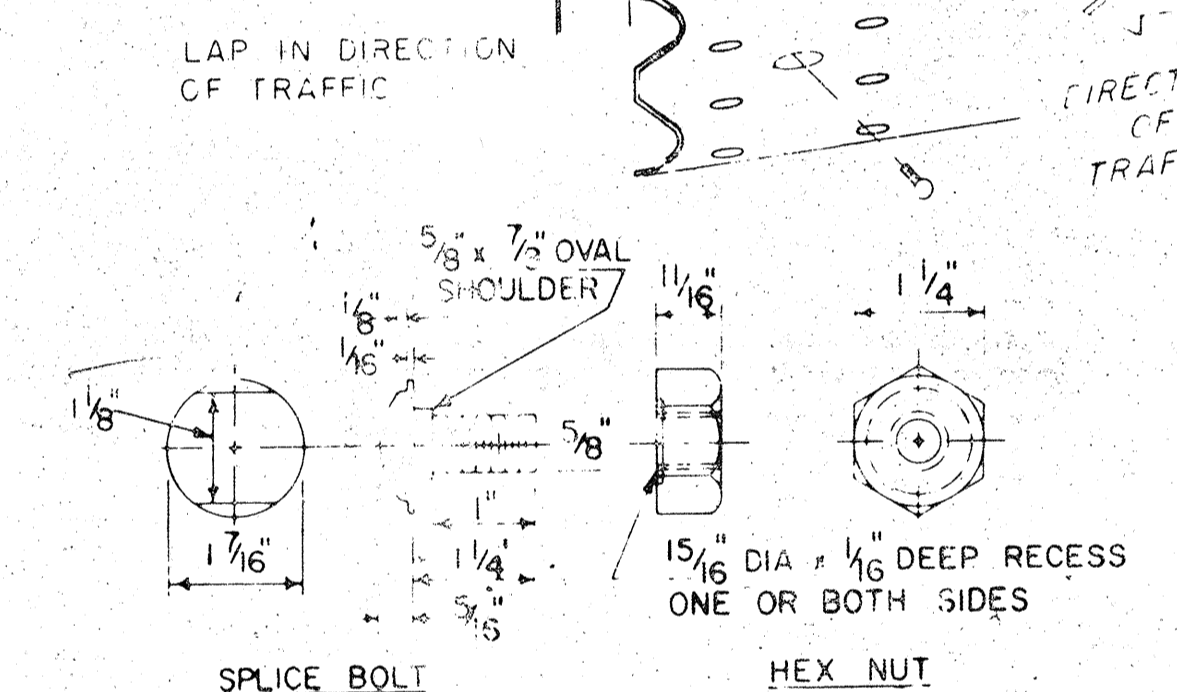
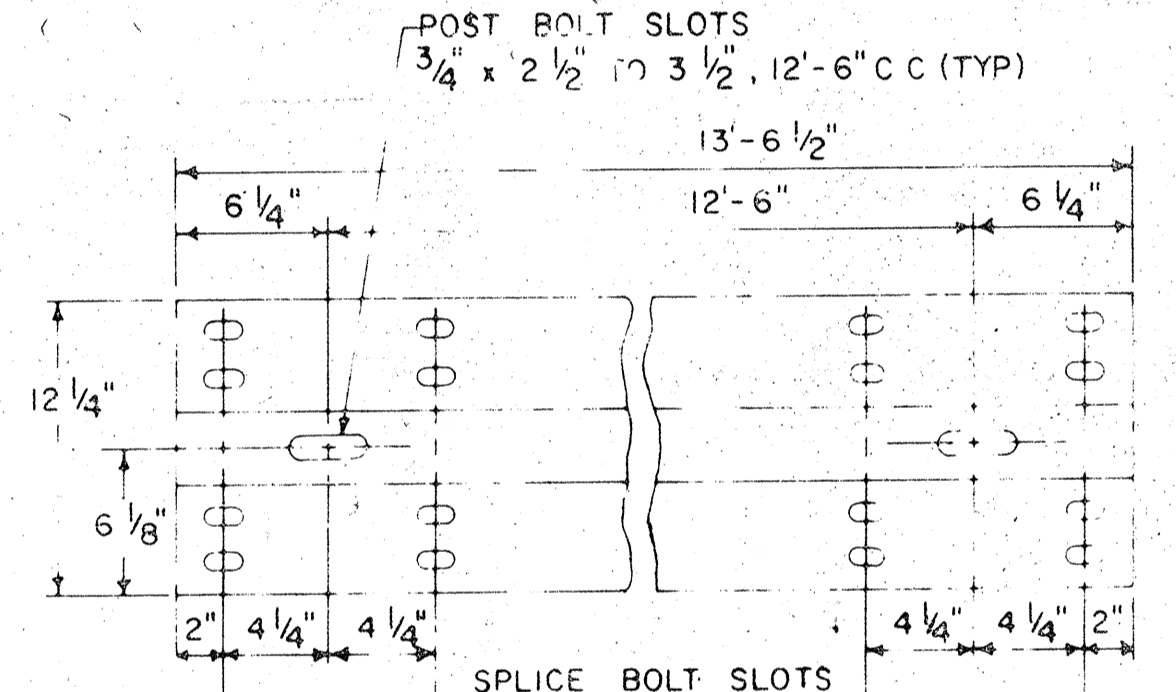
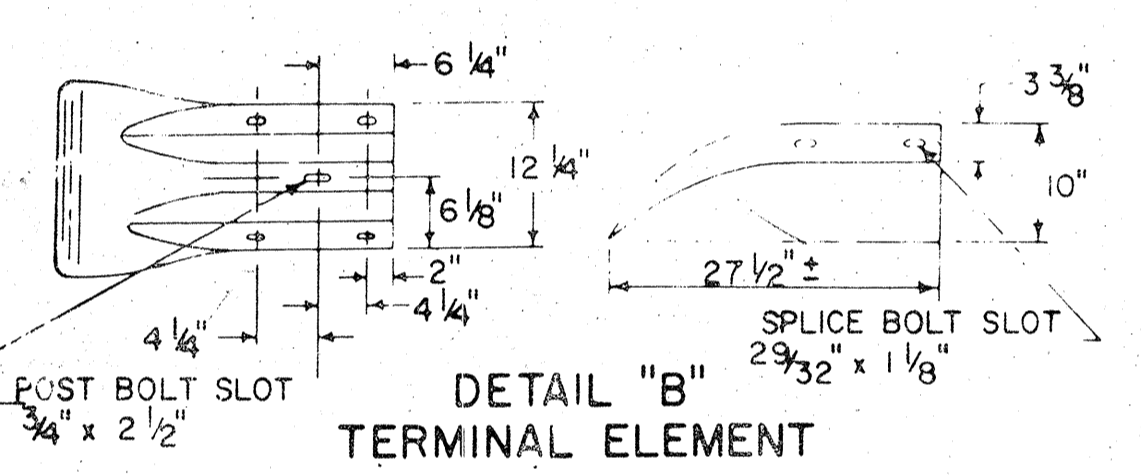
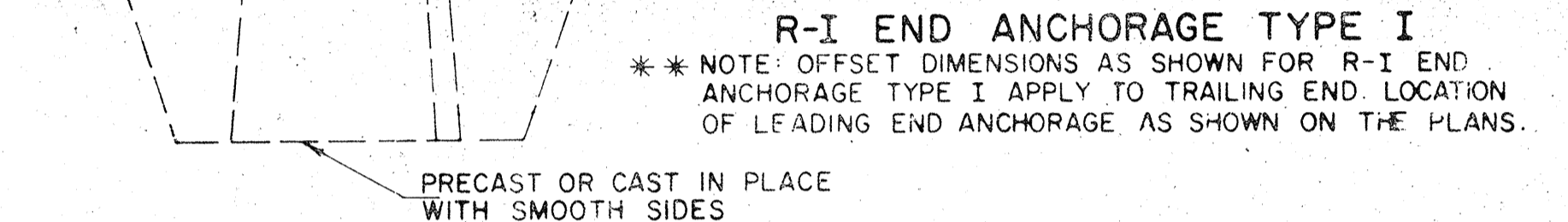
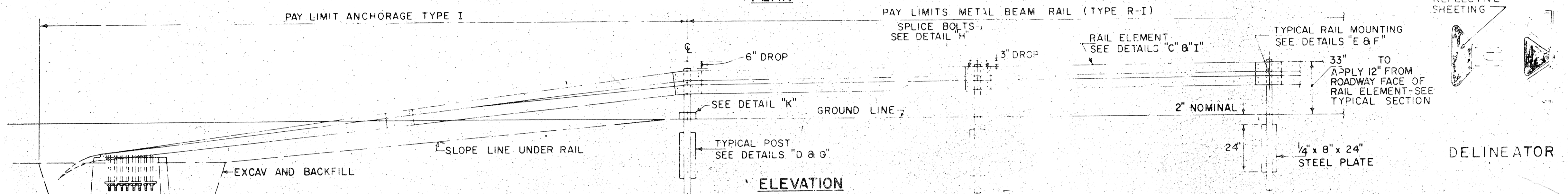
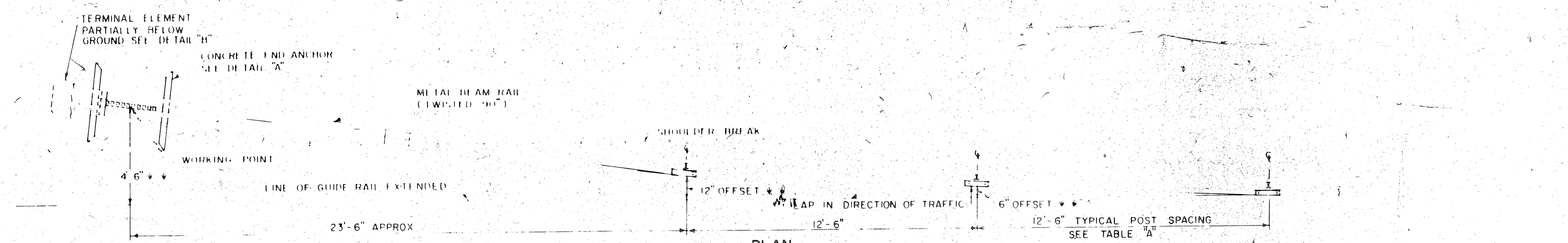
TABLE "A"	
CURVATURE (DEGREE OR RADIUS)	POST SPACING
LESS THAN 26° (150' RAD OR MORE)	12' 6"
29 FT TO 111 FT R	6'
110 FT TO 26 FT R	4'
75 FT TO 50 FT R	3' 1 1/2"
LESS THAN 50 FT R	NOT RECOMMENDED

* FOR CURVES WITH RADIUS OF 150' OR LESS, ALL RAIL MEMBERS SHALL BE FABRICATED TO THE PROPER RADIUS.

DELINEATOR SPACING	
RADIUS OF CURVE	SPACING ON CURVE
150'	25'
300'	50'
700'	75'
1000'	100'
2000'	150'
3000' OR FLATTER	200'

DELINEATOR TO BE INSTALLED ON POST CLOSEST TO DESIGNATED SPACING.

REFLECTIVE SHEETING TO BE WHITE EXCEPT THAT ON THE LEFT OF DIVIDED STREETS, HIGHWAYS, RAMPS AND ONEWAY ROADWAYS IN THE DIRECTION OF TRAVEL IT SHALL BE YELLOW REFLECTORIZE RAIL THAT IS PARALLEL TO, BUT NOT GREATER THAN 6' FROM THE EDGE OF SHOULDER ONLY. MIN. OF 3 PER INST.



REVISIONS		
NO	DATE	DESCRIPTION
1	6-8-85	STD. NO 220 F TO 910 C
2	6-1-87	LAP & TYPICAL SECT. ADDED. 26' RAIL LENGTH DELETED.

CONNECTICUT DEPARTMENT OF TRANSPORTATION BUREAU OF HIGHWAYS

METAL BEAM RAIL (TYPE R-I)

SCALES NOT TO SCALE
 MADE BY W.T. WATERMAN DATE 4-21-72
 CHECKED BY J.D. BARRY DATE 4-28-72
 APPROVED BY [Signature] DATE 6-11-76

STANDARD NUMBER 910-C